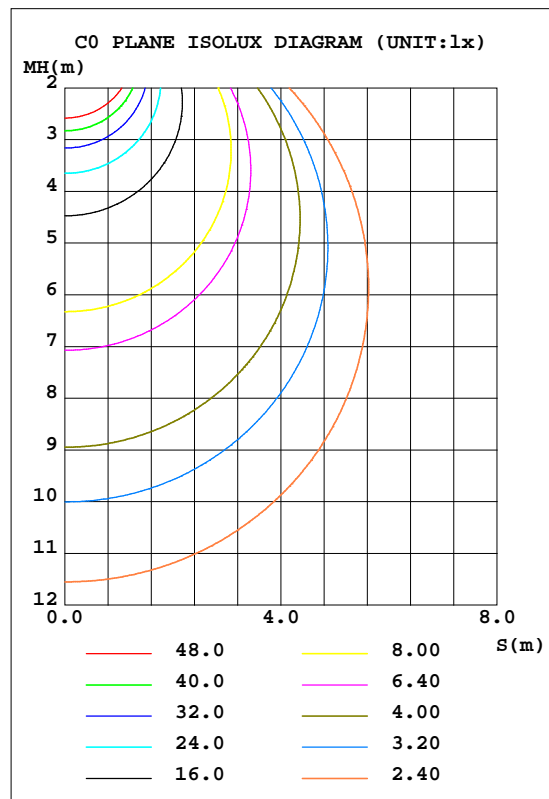
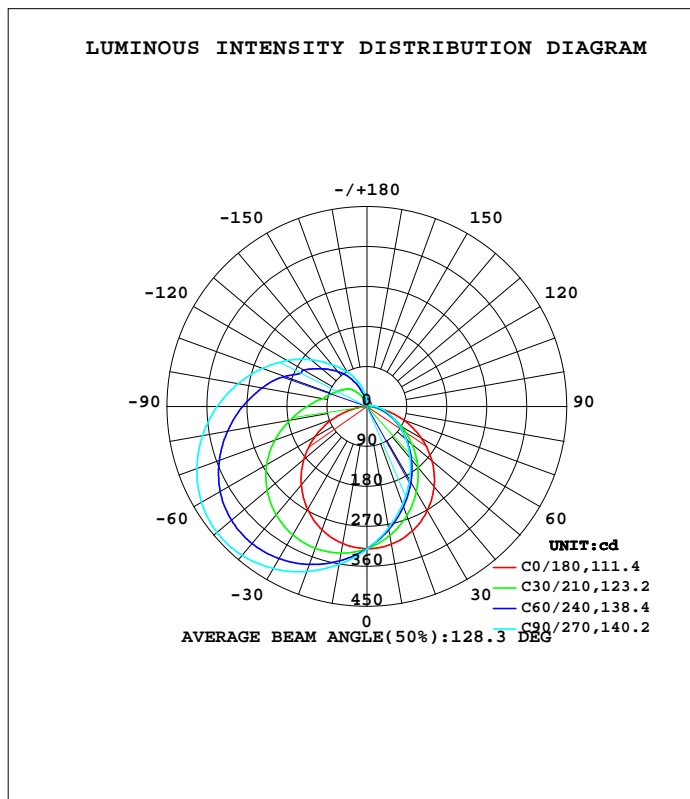


LUMINAIRE PHOTOMETRIC TEST REPORT

Test:U:230.38V I:0.0950A P:20.706W PF:0.9455 Freq:49.99Hz Lamp Flux:1681.39x1 lm		
NAME: Bathroom mirror light	TYPE:	WEIGHT:
SPEC.:	DIM.:	SERIAL No.:
MFR.: CG LIGHTING	SUR.:	Shielding Angle:

DATA OF LAMP		PHOTOMETRIC DATA			
MODEL	1918C1-11P05	Imax(cd)	441.4	S/MH(C0/180)	1.24
NOMINAL POWER(W)		LOR(%)	100.0	S/MH(C90/270)	1.97
RATED VOLTAGE(V)	230.0	TOTAL FLUX(lm)	1681.4	h UP, DN(C0-180)	1.3, 20.6
NOMINAL FLUX(lm)	1681.39	CIE CLASS	SEMI-D.	h UP, DN(C180-360)	21.7, 56.5
LAMPS INSIDE	1	h up(%)	22.9	CIBSE SHR NOM	1.50
TEST VOLTAGE(V)	230.0	h down(%)	77.1	CIBSE SHR MAX	1.55



C Range: 0 - 360DEG
 C Interval: 10.0DEG
 Test Speed: HIGH
 Temperature:25.3DEG
 Operators:LQL
 Test Date:29 August 2018

Range: 0 - 180DEG
 Interval: 1.0DEG
 Test System:EVERFINE GO-2000B_V1 SYSTEM V2.0.403
 Humidity:65.0%
 Test Distance:10.320m [K=1.0000]
 Remarks: SMD2835 XZ-ST30B-420060

ZONAL FLUX DIAGRAM

ZONAL FLUX DIAGRAM:

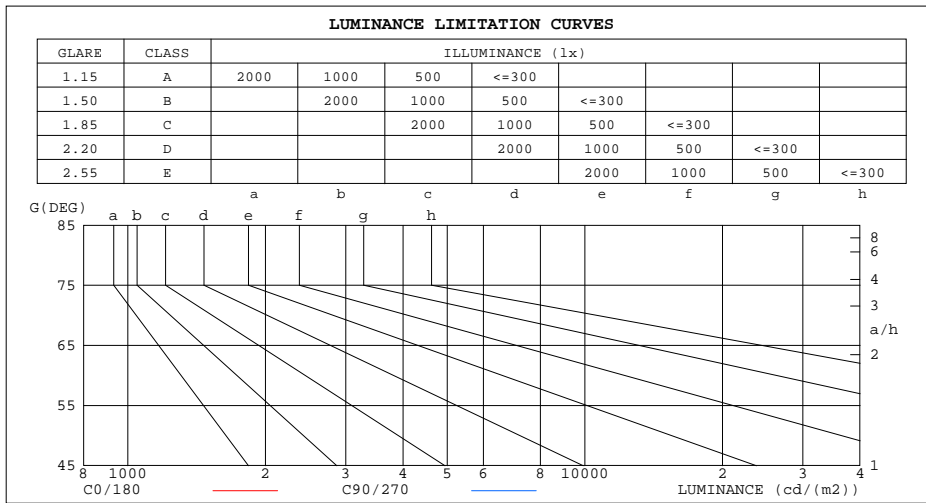
g	C0	C45	C90	C135	C180	C225	C270	C315	g	F zone	F total	%lum,lamp
10	315.0	287.6	278.1	289.5	313.6	344.7	360.4	348.5	0- 10	30.47	30.47	1.81,1.81
20	298.5	249.4	234.5	251.0	295.7	360.7	395.1	366.1	10- 20	88.41	118.9	7.07,7.07
30	271.4	207.6	192.1	209.2	267.5	367.3	421.2	374.5	20- 30	137.8	256.7	15.3,15.3
40	235.2	164.3	151.5	166.3	230.3	364.1	437.4	373.1	30- 40	174.2	430.9	25.6,25.6
50	191.2	122.0	114.9	124.6	185.6	350.7	440.9	361.1	40- 50	194.4	625.4	37.2,37.2
60	140.8	83.16	82.49	86.25	134.9	327.0	430.1	338.4	50- 60	197.4	822.7	48.9,48.9
70	86.13	50.16	55.48	53.66	80.75	293.5	407.4	305.8	60- 70	184.1	1007	59.9,59.9
80	33.16	26.00	34.69	29.24	29.56	254.1	375.7	267.5	70- 80	158.9	1166	69.3,69.3
90	2.833	12.02	20.16	14.08	1.923	214.6	337.6	228.7	80- 90	129.9	1296	77.1,77.1
100	3.571	6.402	11.56	7.241	2.214	178.4	295.3	192.5	90-100	105.7	1401	83.3,83.3
110	5.973	5.187	7.835	5.483	4.083	142.8	250.9	160.3	100-110	85.50	1487	88.4,88.4
120	8.517	5.307	6.701	5.395	6.451	121.1	207.9	132.1	110-120	67.32	1554	92.4,92.4
130	9.950	5.574	6.575	5.634	8.296	98.59	164.0	106.3	120-130	50.58	1605	95.4,95.4
140	10.20	5.765	6.505	5.789	9.021	76.71	123.0	82.35	130-140	35.44	1640	97.6,97.6
150	10.37	5.951	6.357	5.874	9.846	51.26	90.36	62.62	140-150	22.29	1663	98.9,98.9
160	12.53	6.117	6.159	5.895	11.90	26.38	59.37	40.84	150-160	12.08	1675	99.6,99.6
170	16.04	12.84	6.766	10.26	15.77	18.40	27.83	24.23	160-170	5.196	1680	99.9,99.9
180	17.41	17.39	11.56	17.07	17.43	17.42	11.60	17.11	170-180	1.567	1681	100,100
DEG	LUMINOUS INTENSITY:cd								UNIT:lm			

C Range: 0 - 360DEG
 C Interval: 10.0DEG
 Test Speed: HIGH
 Temperature:25.3DEG
 Operators:LQL
 Test Date:29 August 2018

g Range: 0 - 180DEG
 Interval: 1.0DEG
 Test System:EVERFINE GO-2000B_V1 SYSTEM V2.0.403
 Humidity:65.0%
 Test Distance:10.320m [K=1.0000]
 Remarks: SMD2835 XZ-ST30B-420060

LUMINANCE LIMITATION CURVES

Test:U:230.38V I:0.0950A P:20.706W PF:0.9455 Freq:49.99Hz Lamp Flux:1681.39x1 lm		
NAME: Bathroom mirror light	TYPE:	WEIGHT:
SPEC.:	DIM.:	SERIAL No.:
MFR.: CG LIGHTING	SUR.:	Shielding Angle:



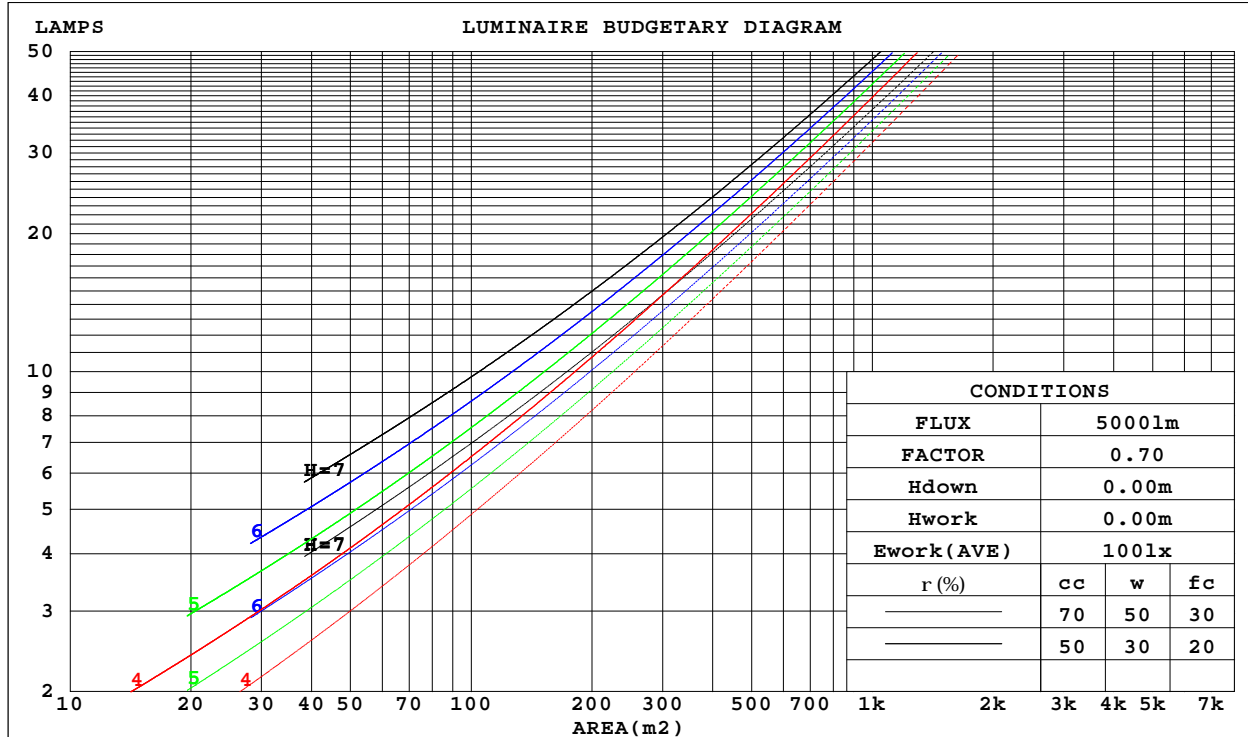
C Range: 0 - 360DEG
 C Interval: 10.0DEG
 Test Speed: HIGH
 Temperature: 25.3DEG
 Operators: LQL
 Test Date: 29 August 2018

G Range: 0 - 180DEG
 G Interval: 1.0DEG
 Test System: EVERFINE GO-2000B_V1 SYSTEM V2.0.403
 Humidity: 65.0%
 Test Distance: 10.320m [K=1.0000]
 Remarks: SMD2835 XZ-ST30B-420060

CU AND LUMINAIRE BUDGETARY ESTIMATE DIAGRAM

Test:U:230.38V I:0.0950A P:20.706W PF:0.9455 Freq:49.99Hz Lamp Flux:1681.39x1 lm		
NAME: Bathroom mirror light	TYPE:	WEIGHT:
SPEC.:	DIM.:	SERIAL No.:
MFR.: CG LIGHTING	SUR.:	Shielding Angle:

r _{cc}	80%			70%			50%			30%			10%			0
r _w	50%	30%	10%	50%	30%	10%	50%	30%	10%	50%	30%	10%	50%	30%	10%	0
r _{fc}	20%			20%			20%			20%			20%			0
RCR	RCR:Room Cavity Ratio						Coefficients of Utilization(CU)									
0.0	1.14	1.14	1.14	1.08	1.08	1.08	.98	.98	.98	.89	.89	.89	.81	.81	.81	.77
1.0	.94	.89	.84	.90	.85	.80	.81	.77	.74	.73	.70	.67	.66	.64	.61	.58
2.0	.80	.73	.66	.77	.69	.63	.69	.63	.58	.62	.58	.54	.56	.52	.49	.46
3.0	.70	.61	.53	.66	.58	.51	.60	.53	.48	.54	.49	.44	.49	.44	.40	.37
4.0	.61	.52	.44	.58	.50	.43	.53	.45	.40	.48	.42	.37	.43	.38	.34	.31
5.0	.54	.45	.38	.52	.43	.36	.47	.39	.34	.42	.36	.31	.38	.33	.29	.26
6.0	.48	.39	.32	.46	.38	.31	.42	.35	.29	.38	.32	.27	.35	.29	.25	.23
7.0	.44	.35	.28	.42	.33	.27	.38	.31	.26	.35	.28	.24	.31	.26	.22	.20
8.0	.40	.31	.25	.38	.30	.24	.35	.28	.23	.32	.26	.21	.29	.24	.20	.17
9.0	.36	.28	.22	.35	.27	.21	.32	.25	.20	.29	.23	.19	.27	.21	.18	.15
10.0	.33	.25	.20	.32	.24	.19	.29	.23	.18	.27	.21	.17	.25	.20	.16	.14



C Range: 0 - 360DEG
 C Interval: 10.0DEG
 Test Speed: HIGH
 Temperature:25.3DEG
 Operators:LQL
 Test Date:29 August 2018

Range: 0 - 180DEG
 Interval: 1.0DEG
 Test System:EVERFINE GO-2000B_V1 SYSTEM V2.0.403
 Humidity:65.0%
 Test Distance:10.320m [K=1.0000]
 Remarks: SMD2835 XZ-ST30B-420060

WEC AND CCEC

Test:U:230.38V I:0.0950A P:20.706W PF:0.9455 Freq:49.99Hz Lamp Flux:1681.39x1 lm		
NAME: Bathroom mirror light	TYPE:	WEIGHT:
SPEC.:	DIM.:	SERIAL No.:
MFR.: CG LIGHTING	SUR.:	Shielding Angle:

rcc	80%			70%			50%			30%			10%			0
rw	50%	30%	10%	50%	30%	10%	50%	30%	10%	50%	30%	10%	50%	30%	10%	0
rfc	20%			20%			20%			20%			20%			0
RCR	RCR:Room Cavity Ratio						Wall Exitance Coefficients(WEC)									
0.0																
1.0	.389	.221	.070	.374	.214	.068	.348	.200	.064	.323	.186	.060	.301	.174	.056	
2.0	.335	.183	.056	.322	.177	.055	.298	.166	.051	.275	.155	.048	.255	.144	.045	
3.0	.297	.158	.047	.285	.153	.046	.263	.143	.043	.243	.133	.041	.224	.124	.038	
4.0	.267	.139	.041	.256	.134	.040	.236	.125	.037	.218	.117	.035	.200	.109	.033	
5.0	.242	.123	.036	.232	.119	.035	.214	.112	.033	.197	.104	.031	.182	.097	.029	
6.0	.222	.111	.032	.213	.107	.031	.196	.101	.029	.181	.094	.028	.166	.088	.026	
7.0	.204	.101	.029	.196	.098	.028	.181	.092	.026	.167	.085	.025	.153	.080	.023	
8.0	.189	.092	.026	.182	.090	.025	.168	.084	.024	.155	.078	.023	.142	.073	.021	
9.0	.176	.085	.024	.170	.083	.023	.157	.077	.022	.144	.072	.021	.133	.068	.020	
10.0	.165	.079	.022	.159	.077	.021	.147	.072	.020	.135	.067	.019	.125	.063	.018	

rcc	80%			70%			50%			30%			10%			0
rw	50%	30%	10%	50%	30%	10%	50%	30%	10%	50%	30%	10%	50%	30%	10%	0
rfc	20%			20%			20%			20%			20%			0
RCR	RCR:Room Cavity Ratio						Ceiling Cavity Exitance Coefficients(CCEC)									
0.0	.365	.365	.365	.312	.312	.312	.213	.213	.213	.122	.122	.122	.039	.039	.039	
1.0	.362	.332	.304	.310	.285	.262	.212	.196	.181	.122	.113	.105	.039	.036	.034	
2.0	.355	.309	.270	.304	.266	.234	.209	.184	.163	.120	.107	.096	.039	.035	.031	
3.0	.348	.293	.249	.298	.253	.216	.205	.175	.151	.118	.102	.089	.038	.033	.029	
4.0	.340	.281	.235	.292	.242	.204	.201	.169	.144	.116	.099	.085	.037	.032	.028	
5.0	.333	.271	.225	.286	.234	.196	.197	.164	.138	.114	.096	.082	.037	.031	.027	
6.0	.325	.263	.218	.280	.228	.190	.193	.159	.135	.112	.094	.080	.036	.031	.026	
7.0	.318	.256	.213	.274	.222	.186	.189	.156	.132	.110	.092	.078	.035	.030	.026	
8.0	.312	.251	.209	.268	.218	.183	.186	.153	.129	.108	.090	.077	.035	.030	.026	
9.0	.305	.246	.206	.263	.214	.180	.182	.150	.128	.106	.089	.076	.034	.029	.025	
10.0	.299	.242	.204	.258	.210	.178	.179	.148	.126	.104	.087	.075	.034	.029	.025	

C Range: 0 - 360DEG
 C Interval: 10.0DEG
 Test Speed: HIGH
 Temperature:25.3DEG
 Operators:LQL
 Test Date:29 August 2018

Range: 0 - 180DEG
 Interval: 1.0DEG
 Test System:EVERFINE GO-2000B_V1 SYSTEM V2.0.403
 Humidity:65.0%
 Test Distance:10.320m [K=1.0000]
 Remarks: SMD2835 XZ-ST30B-420060

UGR(Unified Glare Rating) Table

Test:U:230.38V I:0.0950A P:20.706W PF:0.9455 Freq:49.99Hz Lamp Flux:1681.39x1 lm										
NAME: Bathroom mirror light					TYPE:			WEIGHT:		
SPEC.:					DIM.:			SERIAL No.:		
MFR.: CG LIGHTING					SUR.:			Shielding Angle:		
ceiling/cavity	0.7	0.7	0.5	0.5	0.3	0.7	0.7	0.5	0.5	0.3
walls	0.5	0.3	0.5	0.3	0.3	0.5	0.3	0.5	0.3	0.3
working plane	0.2	0.2	0.2	0.2	0.2	0.2	0.2	0.2	0.2	0.2
Room dimensions	Viewed crosswise					Viewed endwise				
x = 2H y = 2H	21.8	23.1	22.4	23.7	24.4	20.0	21.4	20.6	21.9	22.6
3H	23.2	24.4	23.8	25.0	25.7	21.5	22.7	22.1	23.3	24.0
4H	23.7	24.9	24.4	25.5	26.2	22.3	23.4	22.9	24.0	24.8
6H	24.1	25.2	24.7	25.8	26.6	23.0	24.1	23.7	24.8	25.5
8H	24.2	25.2	24.8	25.9	26.6	23.4	24.5	24.1	25.2	25.9
12H	24.2	25.2	24.9	25.9	26.7	23.9	24.9	24.6	25.6	26.4
4H 2H	21.9	23.1	22.6	23.7	24.4	20.5	21.7	21.1	22.3	23.0
3H	23.4	24.4	24.1	25.1	25.9	22.2	23.2	22.8	23.8	24.6
4H	24.0	25.0	24.7	25.6	26.4	23.0	24.0	23.7	24.7	25.5
6H	24.4	25.3	25.1	26.0	26.8	24.0	24.8	24.7	25.5	26.4
8H	24.5	25.3	25.3	26.0	26.9	24.5	25.3	25.2	26.0	26.9
12H	24.6	25.3	25.3	26.1	26.9	25.1	25.8	25.8	26.6	27.4
8H 4H	24.1	24.9	24.8	25.6	26.5	23.2	24.0	24.0	24.7	25.6
6H	24.6	25.3	25.4	26.0	26.9	24.4	25.0	25.1	25.8	26.7
8H	24.8	25.4	25.5	26.1	27.1	25.1	25.7	25.8	26.4	27.3
12H	24.9	25.4	25.7	26.2	27.1	25.9	26.4	26.7	27.2	28.1
12H 4H	24.1	24.8	24.8	25.6	26.4	23.2	23.9	23.9	24.7	25.5
6H	24.7	25.3	25.4	26.0	26.9	24.4	25.0	25.2	25.8	26.7
8H	24.9	25.4	25.7	26.2	27.1	25.2	25.7	26.0	26.5	27.4
Variations with the observer position at spacings:										
S = 1.0H	+ 0.3 / - 0.3					+ 0.2 / - 0.2				
1.5H	+ 0.8 / - 0.7					+ 0.2 / - 0.3				
2.0H	+ 1.3 / - 1.2					+ 0.1 / - 0.2				

CIE Pub.117, 1681 lm Total Lamp Luminous Flux Correct (8log(F/F0) = 1.8)

C Range: 0 - 360DEG
 C Interval: 10.0DEG
 Test Speed: HIGH
 Temperature:25.3DEG
 Operators:LQL
 Test Date:29 August 2018

g Range: 0 - 180DEG
 g Interval: 1.0DEG
 Test System:EVERFINE GO-2000B_V1 SYSTEM V2.0.403
 Humidity:65.0%
 Test Distance:10.320m [K=1.0000]
 Remarks: SMD2835 XZ-ST30B-420060

UTILIZATION FACTORS TABLE

Test:U:230.38V I:0.0950A P:20.706W PF:0.9455 Freq:49.99Hz Lamp Flux:1681.39x1 lm		
NAME: Bathroom mirror light	TYPE:	WEIGHT:
SPEC.:	DIM.:	SERIAL No.:
MFR.: CG LIGHTING	SUR.:	Shielding Angle:

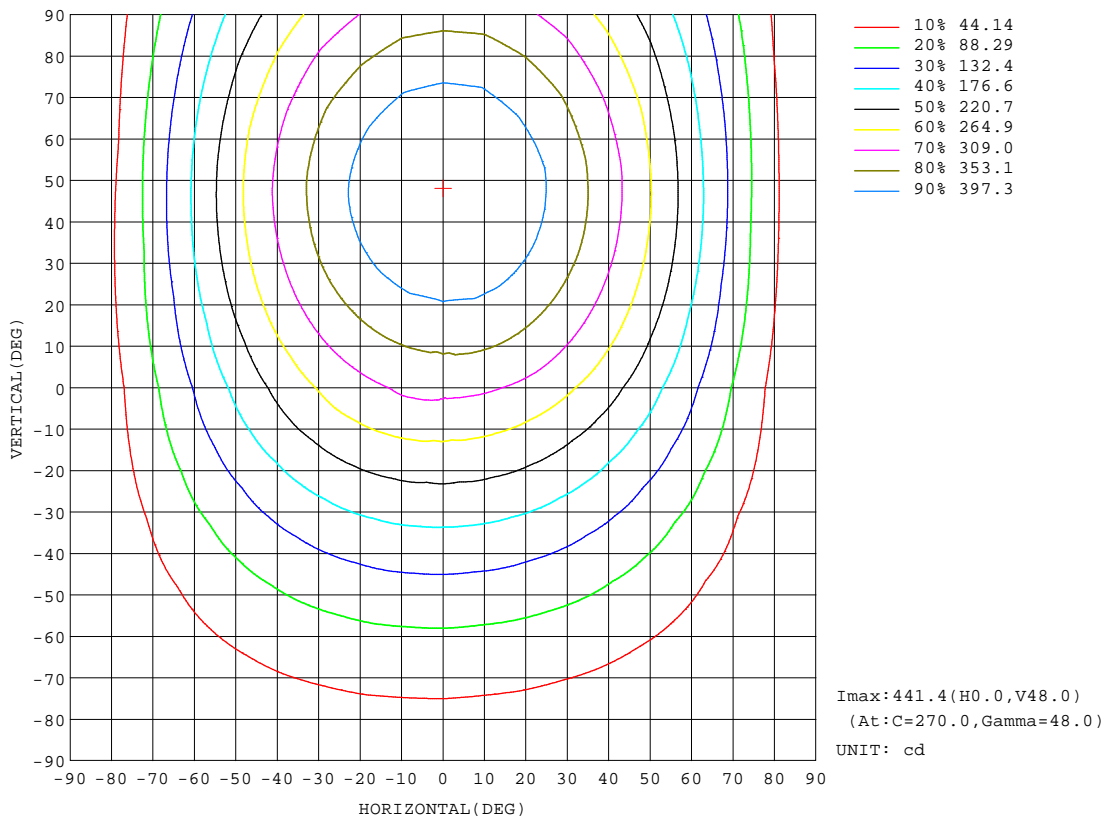
REFLECTANCE										
Ceiling	0.8	0.8	0.8	0.7	0.7	0.7	0.5	0.5	0.5	0
Walls	0.7	0.5	0.3	0.7	0.5	0.3	0.7	0.5	0.3	0
Working plane	0.2	0.2	0.2	0.2	0.2	0.2	0.2	0.2	0.2	0
ROOM INDEX	UTILIZATION FACTORS(PERCENT) $k(RI) \times RCR = 5$									
k = 0.60	46	33	26	45	33	26	42	32	25	18
0.80	55	42	34	53	41	33	50	39	32	24
1.00	63	49	41	60	48	40	56	48	39	30
1.25	69	57	48	67	55	47	62	52	45	35
1.50	75	62	53	72	60	52	66	57	50	38
2.00	82	71	62	79	68	60	72	64	57	44
2.50	87	76	68	83	73	66	76	68	62	48
3.00	90	81	73	86	78	71	79	72	66	52
4.00	95	87	80	91	84	77	83	77	72	56
5.00	98	91	85	94	87	82	85	80	76	59
ROOM INDEX	UF(total)									Direct
According to DIN EN 13032-2 2004			Suspended				SHRNOM = 1.25			

C Range: 0 - 360DEG
 C Interval: 10.0DEG
 Test Speed: HIGH
 Temperature:25.3DEG
 Operators:LQL
 Test Date:29 August 2018

g Range: 0 - 180DEG
 Interval: 1.0DEG
 Test System:EVERFINE GO-2000B_V1 SYSTEM V2.0.403
 Humidity:65.0%
 Test Distance:10.320m [K=1.0000]
 Remarks: SMD2835 XZ-ST30B-420060

ISOCANDELA DIAGRAM

Test:U:230.38V I:0.0950A P:20.706W PF:0.9455 Freq:49.99Hz Lamp Flux:1681.39x1 lm		
NAME: Bathroom mirror light	TYPE:	WEIGHT:
SPEC.:	DIM.:	SERIAL No.:
MFR.: CG LIGHTING	SUR.:	Shielding Angle:

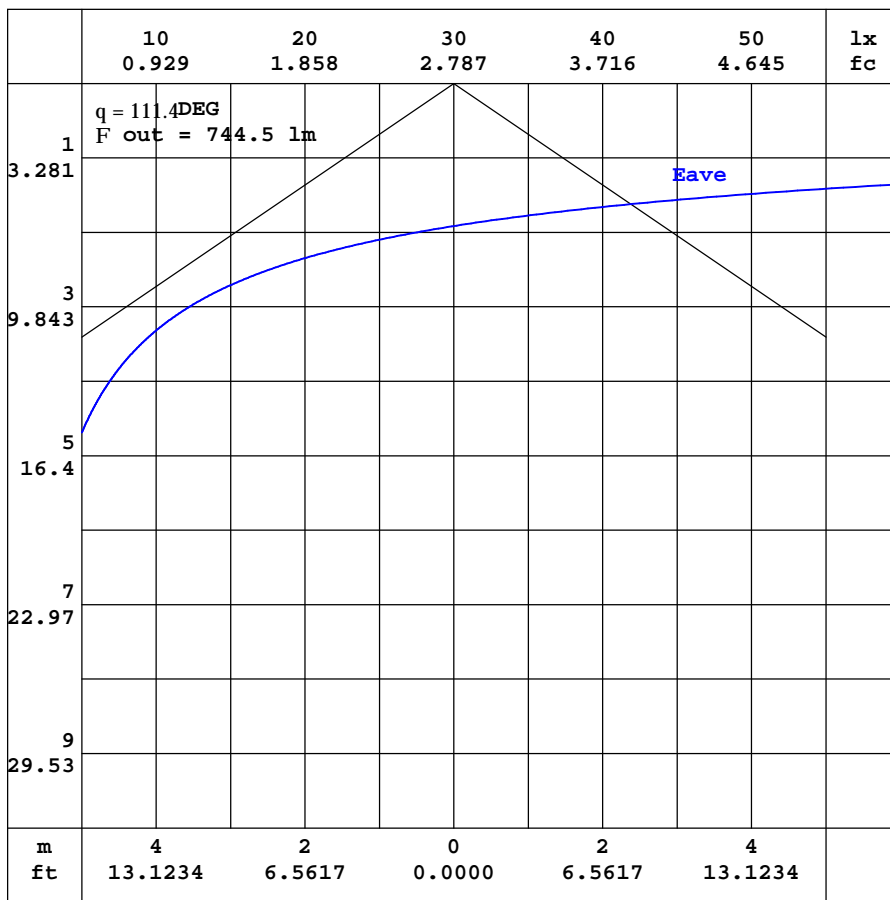


C Range: 0 - 360DEG
 C Interval: 10.0DEG
 Test Speed: HIGH
 Temperature: 25.3DEG
 Operators: LQL
 Test Date: 29 August 2018

Range: 0 - 180DEG
 Interval: 1.0DEG
 Test System: EVERFINE GO-2000B_V1 SYSTEM V2.0.403
 Humidity: 65.0%
 Test Distance: 10.320m [K=1.0000]
 Remarks: SMD2835 XZ-ST30B-420060

AAI CURVES

Test:U:230.38V I:0.0950A P:20.706W PF:0.9455 Freq:49.99Hz Lamp Flux:1681.39x1 lm		
NAME: Bathroom mirror light	TYPE:	WEIGHT:
SPEC.:	DIM.:	SERIAL No.:
MFR.: CG LIGHTING	SUR.:	Shielding Angle:



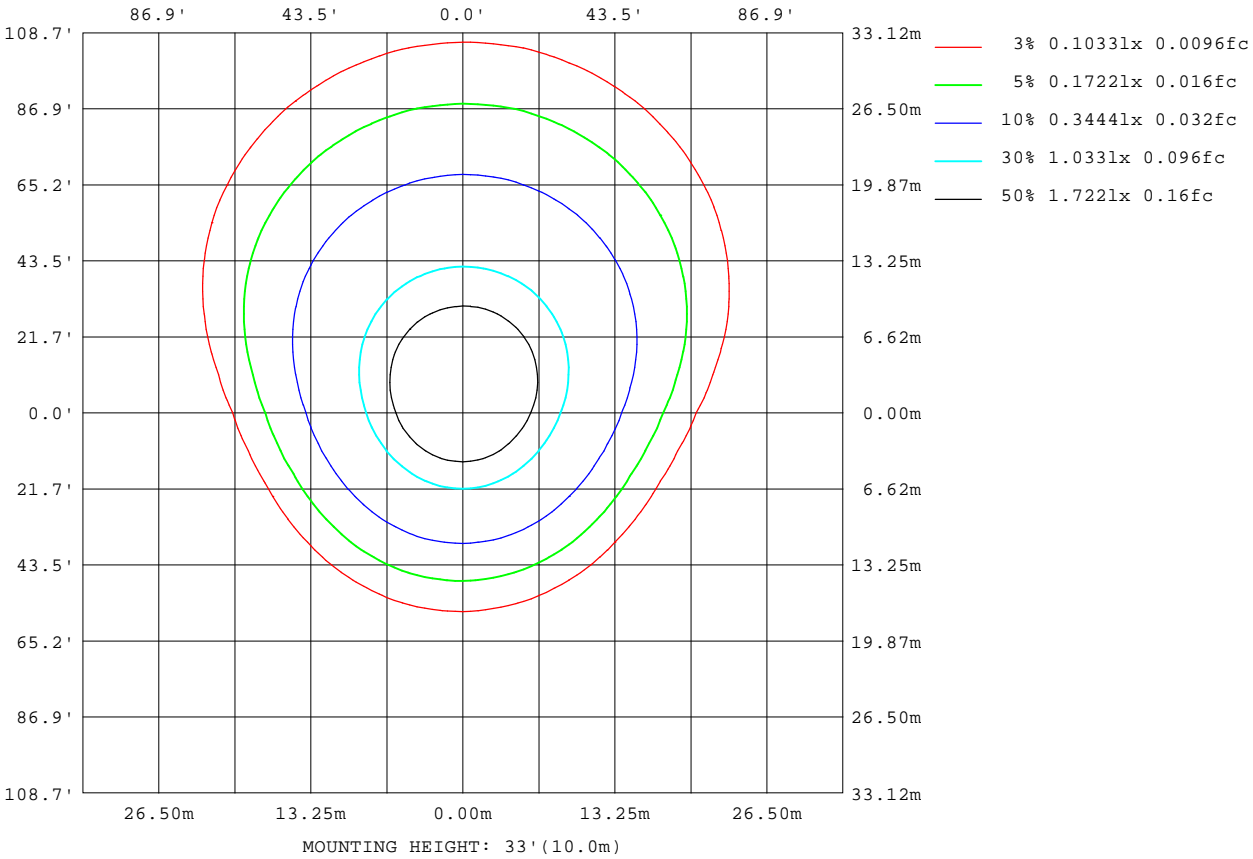
Note:The Curves indicate the illuminated area and the average illumination when the luminaire is at different distance.

C Range: 0 - 360DEG
 C Interval: 10.0DEG
 Test Speed: HIGH
 Temperature:25.3DEG
 Operators:LQL
 Test Date:29 August 2018

Range: 0 - 180DEG
 Interval: 1.0DEG
 Test System:EVERFINE GO-2000B_V1 SYSTEM V2.0.403
 Humidity:65.0%
 Test Distance:10.320m [K=1.0000]
 Remarks: SMD2835 XZ-ST30B-420060

ISOLUX DIAGRAM

Test:U:230.38V I:0.0950A P:20.706W PF:0.9455 Freq:49.99Hz Lamp Flux:1681.39x1 lm		
NAME: Bathroom mirror light	TYPE:	WEIGHT:
SPEC.:	DIM.:	SERIAL No.:
MFR.: CG LIGHTING	SUR.:	Shielding Angle:



C Range: 0 - 360DEG
 C Interval: 10.0DEG
 Test Speed: HIGH
 Temperature: 25.3DEG
 Operators: LQL
 Test Date: 29 August 2018

Page Range: 0 - 180DEG
 Interval: 1.0DEG
 Test System: EVERFINE GO-2000B_V1 SYSTEM V2.0.403
 Humidity: 65.0%
 Test Distance: 10.320m [K=1.0000]
 Remarks: SMD2835 XZ-ST30B-420060

LED Avg.L Report

Test:U:230.38V I:0.0950A P:20.706W PF:0.9455 Freq:49.99Hz Lamp Flux:1681.39x1 lm		
NAME: Bathroom mirror light	TYPE:	WEIGHT:
SPEC.:	DIM.:	SERIAL No.:
MFR.: CG LIGHTING	SUR.:	Shielding Angle:

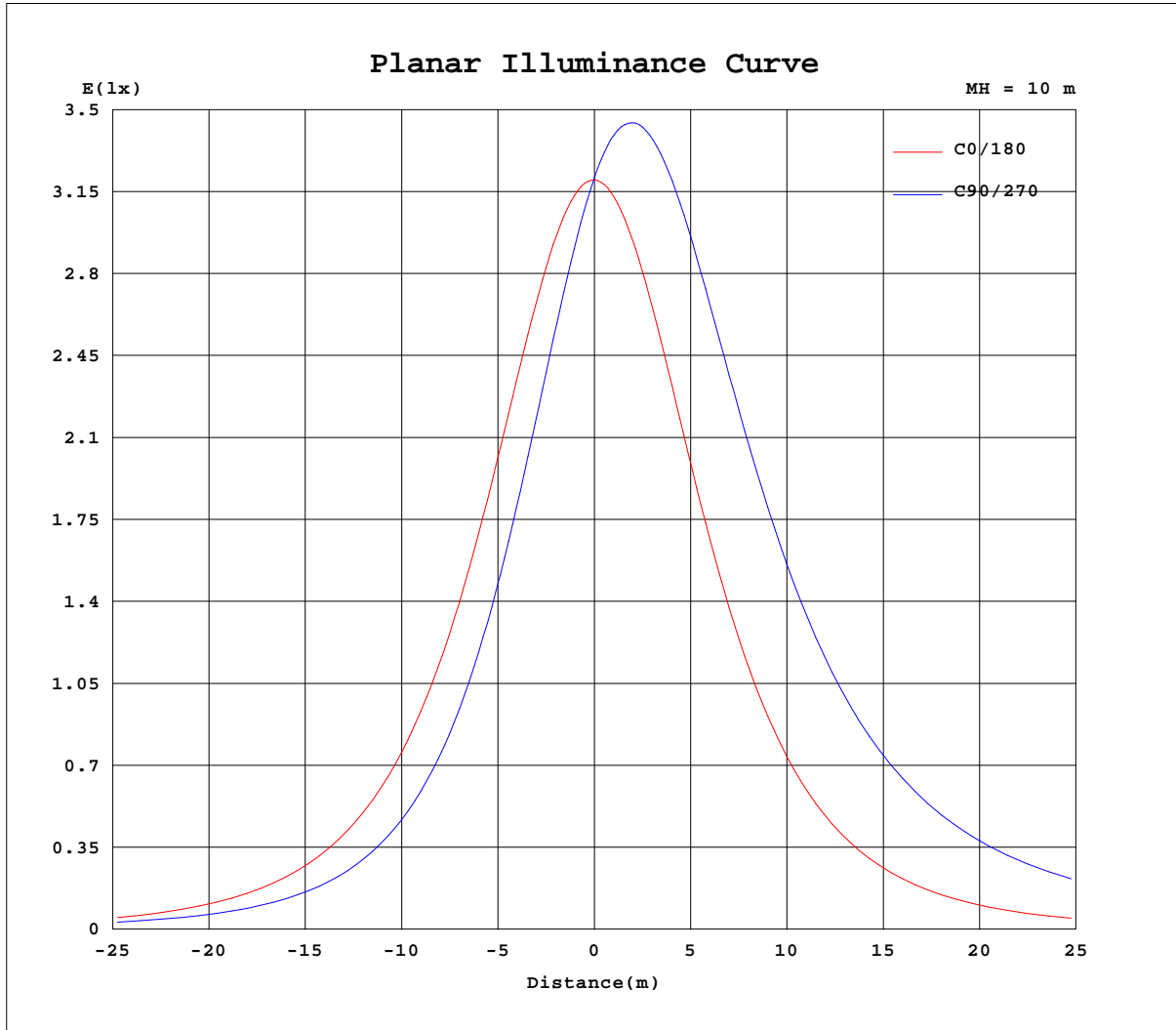
AvgL	cd/m2
L_0~180(65)av	69044
L_0~180(75)av	57301
L_0~180(85)av	34304
L_90~270(65)av	152049
L_90~270(75)av	222119
L_90~270(85)av	579684
L_45(65)av	119967
L_45(75)av	162614
L_45(85)av	394149

Standard: GB/T 29293-2012

C Range: 0 - 360DEG
 C Interval: 10.0DEG
 Test Speed: HIGH
 Temperature:25.3DEG
 Operators:LQL
 Test Date:29 August 2018

g Range: 0 - 180DEG
 g Interval: 1.0DEG
 Test System:EVERFINE GO-2000B_V1 SYSTEM V2.0.403
 Humidity:65.0%
 Test Distance:10.320m [K=1.0000]
 Remarks: SMD2835 XZ-ST30B-420060

Planar Illuminance Curve



C Range: 0 - 360DEG
 C Interval: 10.0DEG
 Test Speed: HIGH
 Temperature: 25.3DEG
 Operators: LQL
 Test Date: 29 August 2018

Page Range: 0 - 180DEG
 Interval: 1.0DEG
 Test System: EVERFINE GO-2000B_V1 SYSTEM V2.0.403
 Humidity: 65.0%
 Test Distance: 10.320m [K=1.0000]
 Remarks: SMD2835 XZ-ST30B-420060

LUMINOUS DISTRIBUTION INTENSITY DATA

Test:U:230.38V I:0.0950A P:20.706W PF:0.9455 Freq:49.99Hz Lamp Flux:1681.39x1 lm		
NAME: Bathroom mirror light	TYPE:	WEIGHT:
SPEC.:	DIM.:	SERIAL No.:
MFR.: CG LIGHTING	SUR.:	Shielding Angle:

Table--1

UNIT: cd

C(DEG) g (DEG)	0	10	20	30	40	50	60	70	80	90	100	110	120	130	140	150	160	170	180
0	320	320	320	320	320	320	320	320	319	321	320	322	322	322	323	323	323	323	320
5	319	315	312	309	306	304	302	301	298	300	299	302	303	306	308	311	314	318	318
10	315	308	301	295	290	286	282	280	277	278	278	281	283	287	292	297	303	310	314
15	308	298	288	279	272	266	261	259	255	256	256	260	263	268	274	281	289	299	306
20	298	285	272	262	253	246	240	237	234	234	235	238	242	248	254	263	273	286	296
25	286	270	255	243	233	225	219	216	213	213	213	217	220	227	234	244	256	270	283
30	271	252	235	222	211	204	198	194	192	192	193	196	199	205	213	224	236	252	267
35	254	233	214	201	190	182	177	174	171	171	172	175	178	184	191	202	215	232	250
40	235	212	192	178	168	161	156	153	152	152	152	155	158	163	170	180	193	211	230
45	214	189	169	156	146	140	136	134	132	133	133	135	138	142	148	157	170	188	209
50	191	165	145	133	124	120	117	115	114	115	115	117	119	122	127	135	146	164	186
55	167	140	121	110	103	101	98.3	97.8	97.2	98.1	98.3	99.7	101	103	106	113	122	139	161
60	141	114	96.8	88.7	83.8	82.5	81.3	81.6	81.5	82.5	82.7	83.6	83.8	85.4	87.1	91.6	98.6	113	135
65	114	88.1	73.8	68.4	65.7	65.8	65.6	66.7	67.2	68.2	68.3	68.8	68.4	68.9	69.2	71.8	76.2	88.0	108
70	86.1	62.7	52.3	50.1	49.5	50.8	51.8	53.6	54.4	55.5	55.5	55.7	54.6	54.2	53.2	53.7	55.4	63.6	80.7
75	58.7	39.4	33.7	34.3	35.5	38.1	39.9	42.1	43.1	44.3	44.2	44.1	42.5	41.3	39.2	38.1	37.2	41.2	54.0
80	33.2	19.9	19.1	21.7	24.4	27.6	30.0	32.4	33.6	34.7	34.5	34.1	32.4	30.6	27.8	25.4	22.6	22.5	29.6
85	12.4	7.07	9.41	12.9	16.0	19.5	22.1	24.5	25.7	26.7	26.4	25.9	24.1	22.0	19.0	15.9	12.3	9.66	10.3
90	2.83	2.43	4.62	7.55	10.5	13.6	16.0	18.2	19.4	20.2	19.9	19.3	17.6	15.5	12.6	9.63	6.33	3.54	1.92
95	3.13	2.15	3.14	4.97	7.15	9.59	11.6	13.5	14.5	15.2	14.9	14.3	12.8	11.0	8.59	6.14	3.84	2.27	1.96
100	3.57	2.39	2.97	4.07	5.52	7.28	8.86	10.2	11.1	11.6	11.4	10.8	9.59	8.14	6.34	4.66	3.25	2.38	2.21
105	4.72	2.65	3.19	3.85	4.93	6.15	7.30	8.34	8.92	9.19	9.04	8.59	7.69	6.62	5.38	4.21	3.28	2.67	2.89
110	5.97	2.90	3.43	4.03	4.69	5.68	6.54	7.30	7.73	7.84	7.71	7.37	6.72	5.94	5.03	4.17	3.55	2.95	4.08
115	7.25	3.16	3.67	4.24	4.87	5.44	6.12	6.74	7.08	7.16	7.01	6.74	6.24	5.60	5.00	4.40	3.83	3.24	5.26
120	8.52	3.40	3.91	4.45	5.04	5.57	6.03	6.36	6.62	6.70	6.53	6.31	5.99	5.62	5.17	4.62	4.09	3.52	6.45
125	9.65	3.69	4.14	4.65	5.21	5.70	6.10	6.39	6.57	6.57	6.43	6.31	6.07	5.74	5.31	4.82	4.31	3.78	7.68
130	9.95	4.91	4.35	4.86	5.35	5.80	6.16	6.41	6.56	6.58	6.48	6.35	6.13	5.82	5.45	4.99	4.52	4.03	8.30
135	10.1	6.01	4.56	5.02	5.49	5.88	6.19	6.41	6.54	6.55	6.48	6.35	6.17	5.89	5.55	5.14	4.70	4.26	8.71
140	10.2	7.20	4.78	5.20	5.60	5.93	6.21	6.38	6.47	6.50	6.45	6.34	6.17	5.93	5.64	5.27	4.88	5.11	9.02
145	10.2	8.32	4.99	5.36	5.72	6.00	6.21	6.34	6.41	6.45	6.39	6.30	6.16	5.96	5.72	5.38	5.03	6.48	9.24
150	10.4	9.11	6.46	5.53	5.83	6.07	6.22	6.29	6.35	6.36	6.32	6.25	6.15	5.98	5.77	5.47	5.18	7.79	9.85
155	10.8	9.85	8.74	5.69	5.95	6.14	6.22	6.24	6.25	6.27	6.24	6.21	6.13	5.98	5.80	5.55	6.06	9.03	10.4
160	12.5	11.4	10.9	8.10	6.05	6.19	6.22	6.18	6.15	6.16	6.16	6.13	6.08	5.97	5.82	5.66	8.31	10.7	11.9
165	14.4	13.2	13.0	11.6	9.13	6.17	6.10	6.01	5.97	6.00	6.07	6.06	6.02	5.93	6.59	8.78	11.3	12.8	13.9
170	16.0	15.1	14.7	14.5	13.7	11.9	10.5	8.98	8.16	6.77	6.95	7.17	8.03	9.38	11.1	12.9	14.0	14.5	15.8
175	17.5	16.9	16.4	16.0	15.8	15.8	15.4	15.0	12.8	10.3	10.4	11.8	13.7	14.7	15.4	15.6	15.8	16.2	17.2
180	17.4	17.4	17.4	17.4	17.4	17.4	16.8	15.1	11.6	11.6	15.3	17.1	17.1	17.1	17.1	17.1	17.0	17.0	17.4

C Range: 0 - 360DEG
 C Interval: 10.0DEG
 Test Speed: HIGH
 Temperature:25.3DEG
 Operators:LQL
 Test Date:29 August 2018

g Range: 0 - 180DEG
 Interval: 1.0DEG
 Test System:EVERFINE GO-2000B_V1 SYSTEM V2.0.403
 Humidity:65.0%
 Test Distance:10.320m [K=1.0000]
 Remarks: SMD2835 XZ-ST30B-420060

LUMINOUS DISTRIBUTION INTENSITY DATA

Test:U:230.38V I:0.0950A P:20.706W PF:0.9455 Freq:49.99Hz Lamp Flux:1681.39x1 lm		
NAME: Bathroom mirror light	TYPE:	WEIGHT:
SPEC.:	DIM.:	SERIAL No.:
MFR.: CG LIGHTING	SUR.:	Shielding Angle:

Table--2

UNIT: cd

C(DEG) g (DEG)	190	200	210	220	230	240	250	260	270	280	290	300	310	320	330	340	350		
0	320	320	320	320	320	320	320	319	321	320	322	322	322	323	323	323	323		
5	322	325	329	332	335	337	339	339	341	340	341	339	338	335	333	329	326		
10	321	328	335	342	348	353	357	358	360	359	359	355	351	346	340	332	325		
15	317	328	339	349	359	366	373	375	379	377	375	370	363	354	344	333	322		
20	310	325	340	354	367	378	387	391	395	393	390	382	372	360	346	331	316		
25	300	319	338	357	374	388	400	405	410	407	403	393	380	363	345	326	307		
30	288	311	334	357	378	396	409	417	421	419	414	401	384	365	342	319	295		
35	273	300	327	355	379	400	417	426	431	428	421	407	387	363	336	309	281		
40	256	287	318	350	378	403	421	432	437	435	425	410	387	359	328	297	265		
45	237	272	307	343	375	402	422	435	441	438	427	409	384	353	318	282	247		
50	216	254	294	333	368	398	420	435	441	438	426	406	378	344	306	266	226		
55	194	235	278	321	359	392	415	431	437	434	421	400	369	333	291	247	204		
60	169	214	261	307	347	382	407	424	430	427	413	390	358	319	274	227	180		
65	143	191	242	290	332	369	395	414	420	418	401	378	343	303	256	206	155		
70	116	167	221	271	316	354	381	401	407	405	388	363	327	285	235	183	129		
75	89.0	143	198	251	297	337	365	386	393	390	372	346	309	265	213	159	103		
80	62.6	119	176	230	278	319	348	369	376	373	355	328	290	245	192	135	77.2		
85	39.4	95.8	154	210	258	299	329	351	357	354	336	309	271	225	171	114	55.1		
90	23.6	77.5	135	191	239	280	310	331	338	335	316	290	251	206	153	95.9	39.6		
95	17.2	64.3	119	173	220	260	289	310	317	314	296	270	232	188	136	82.2	31.4		
100	15.5	54.6	102	155	201	240	269	289	295	293	275	250	214	171	122	72.2	27.9		
105	16.0	49.7	93.5	135	180	221	248	268	273	271	254	231	196	156	110	65.1	26.1		
110	16.8	46.2	85.4	127	159	198	227	246	251	249	233	211	179	142	100	59.7	25.3		
115	16.9	43.8	78.2	116	151	173	205	224	229	227	213	192	163	129	91.4	55.1	25.6		
120	16.4	42.0	72.0	105	137	165	181	201	208	206	193	174	147	117	83.3	51.0	25.1		
125	15.7	40.6	66.5	95.7	124	148	159	178	186	185	173	156	133	105	75.6	47.6	23.9		
130	15.7	38.3	61.5	86.3	111	133	148	156	164	164	154	139	118	94.3	68.3	45.5	22.1		
135	15.3	34.3	56.5	77.3	98.5	118	132	137	143	144	136	123	104	83.7	61.8	42.2	20.2		
140	14.3	28.1	48.0	67.6	85.8	103	115	120	123	124	118	106	90.9	73.8	56.9	38.1	19.8		
145	13.4	22.0	38.9	56.2	72.4	89.5	99.3	104	106	105	100	91.0	78.4	65.6	50.6	33.3	19.8		
150	12.5	16.7	30.0	44.2	58.4	73.1	84.5	89.9	90.4	88.1	83.9	76.7	68.1	57.1	43.4	28.0	19.8		
155	12.4	15.0	21.5	32.8	43.9	56.1	70.9	75.1	74.8	74.3	70.5	65.2	57.2	47.5	35.4	24.7	19.6		
160	13.5	15.2	16.6	22.6	30.2	39.0	49.0	59.6	59.4	59.4	56.3	51.8	44.9	36.8	27.6	23.2	19.0		
165	15.3	16.8	17.8	17.9	19.0	23.5	29.3	41.4	42.7	42.9	40.5	37.0	31.7	27.4	24.4	21.6	18.4		
170	16.8	17.9	18.7	18.9	18.0	16.1	16.5	19.0	27.8	27.8	27.3	26.3	25.0	23.5	21.8	20.1	17.9		
175	17.9	18.5	18.8	18.9	18.3	16.8	13.8	13.9	14.4	21.9	21.6	21.2	20.6	20.0	19.3	18.5	17.7		
180	17.4	17.4	17.4	17.4	17.4	16.8	15.1	11.6	11.6	15.4	17.2	17.1	17.1	17.1	17.1	17.1	17.0		

C Range: 0 - 360DEG
 C Interval: 10.0DEG
 Test Speed: HIGH
 Temperature:25.3DEG
 Operators:LQL
 Test Date:29 August 2018

g Range: 0 - 180DEG
 Interval: 1.0DEG
 Test System:EVERFINE GO-2000B_V1 SYSTEM V2.0.403
 Humidity:65.0%
 Test Distance:10.320m [K=1.0000]
 Remarks: SMD2835 XZ-ST30B-420060