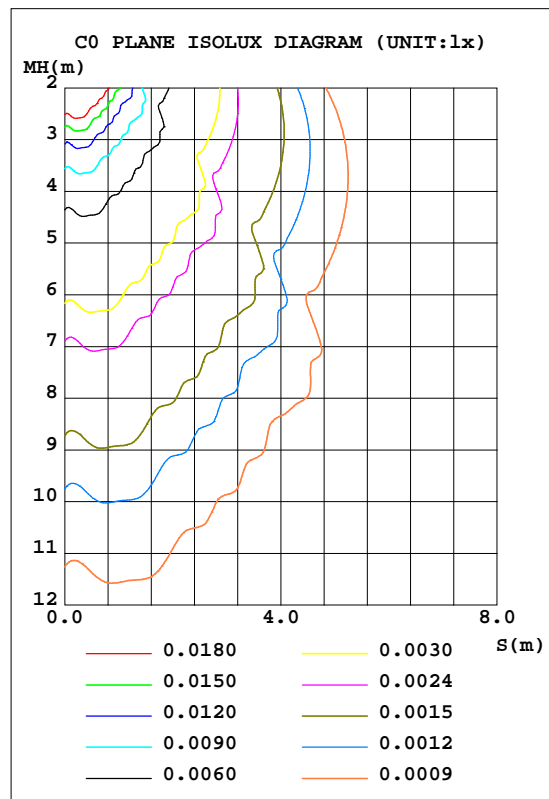
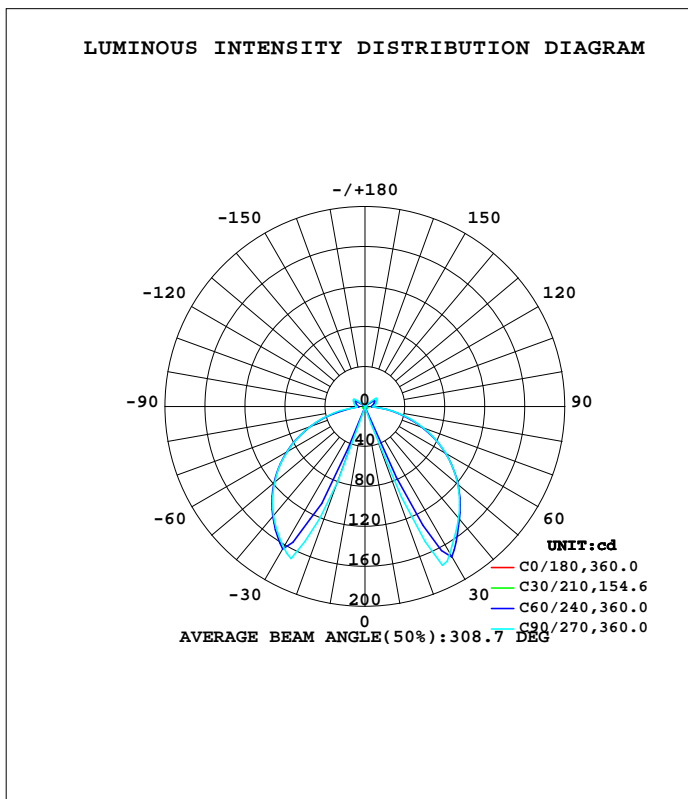


LUMINAIRE PHOTOMETRIC TEST REPORT

Test:U:230.44V I:0.0337A P:7.3390W PF:0.9443 Freq:49.99Hz Lamp Flux:303.106x1 lm		
NAME: (Key -light)New kube 6W color toning LED	waTYPEight	WEIGHT:
SPEC.:	DIM.:	SERIAL No.:
MFR.: CG LIGHTING	SUR.:	Shielding Angle:

DATA OF LAMP		PHOTOMETRIC DATA				Eff: 41.30 lm/W
MODEL	1479CT6-P8+G2	I _{max} (cd)	177.2	S/MH(C0/180)	0.57	
NOMINAL POWER(W)		LOR(%)	100.0	S/MH(C90/270)	0.41	
RATED VOLTAGE(V)	230	TOTAL FLUX(lm)	303.11	h UP, DN(C0-180)	3.7,46.8	
NOMINAL FLUX(lm)	303.106	CIE CLASS	DIRECT	h UP, DN(C180-360)	3.6,45.9	
LAMPS INSIDE	1	h up(%)	7.3	CIBSE SHR NOM	0.00	
TEST VOLTAGE(V)	230	h down(%)	92.7	CIBSE SHR MAX	1.00	



C Range: 0 - 360DEG
 C Interval: 10.0DEG
 Test Speed: HIGH
 Temperature:25.3DEG
 Operators:LQL
 Test Date:10 December 2020

Range: 0 - 180DEG
 Interval: 2.0DEG
 Test System:EVERFINE GO-2000B_V1 SYSTEM V2.0.403
 Humidity:65.0%
 Test Distance:10.258m [K=1.0000]
 Remarks: ZG2BRM23L00 HEP LSTC10W350P

ZONAL FLUX DIAGRAM

ZONAL FLUX DIAGRAM:

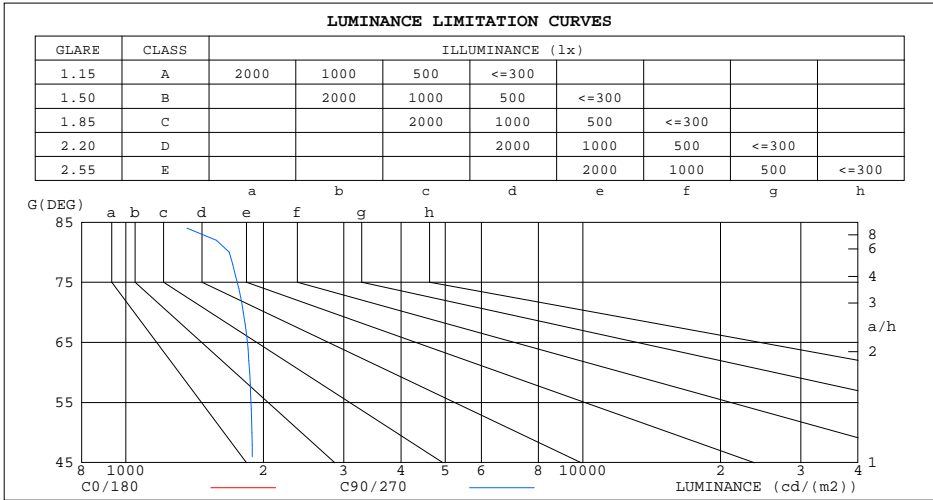
g	C0	C45	C90	C135	C180	C225	C270	C315	g	F zone	F total	%lum,lamp
10	0.1143	0.1000	0.0859	0.1215	0.0643	0.1286	0.0570	0.1179	0- 10	0.0083	0.0083	0.00,0.00
20	0.0929	0.3752	19.63	0.4860	0.0643	0.6856	79.02	0.5464	10- 20	0.4148	0.4230	0.14,0.14
30	0.0857	95.34	169.9	92.34	0.0643	108.0	162.7	113.7	20- 30	26.99	27.41	9.04,9.04
40	0.0643	121.1	145.7	145.2	0.0714	143.9	142.5	126.4	30- 40	56.90	84.31	27.8,27.8
50	0.0643	101.8	121.3	119.1	0.0786	118.0	118.2	102.8	40- 50	61.21	145.5	48,48
60	0.0643	78.30	93.33	90.65	0.0786	88.76	89.72	76.08	50- 60	56.71	202.2	66.7,66.7
70	0.0643	50.87	61.87	57.99	0.0786	55.73	58.10	47.13	60- 70	44.68	246.9	81.5,81.5
80	0.0643	22.28	29.23	22.81	0.0786	16.53	25.37	19.01	70- 80	26.54	273.4	90.2,90.2
90	0.0643	2.154	8.280	3.011	0.0857	3.111	8.327	2.189	80- 90	7.486	280.9	92.7,92.7
100	0.0857	2.893	10.23	3.850	0.0929	3.889	10.17	2.875	90-100	4.540	285.5	94.2,94.2
110	0.1214	3.932	12.16	4.943	0.1500	4.889	11.98	3.724	100-110	5.320	290.8	95.9,95.9
120	0.3351	4.163	13.90	4.970	0.2787	4.056	13.50	3.063	110-120	5.806	296.6	97.9,97.9
130	0.4499	0.9464	8.342	1.128	0.4287	1.140	4.820	0.9574	120-130	4.109	300.7	99.2,99.2
140	0.5713	0.8750	1.478	1.093	0.6002	1.107	1.450	0.8893	130-140	0.9455	301.7	99.5,99.5
150	0.7354	0.8035	1.257	1.068	0.7574	1.082	1.214	0.8357	140-150	0.6223	302.3	99.7,99.7
160	0.8568	0.8072	1.043	1.114	0.9002	1.132	1.000	0.8501	150-160	0.4420	302.7	99.9,99.9
170	1.007	0.9571	1.164	1.146	1.043	1.154	1.171	1.036	160-170	0.2859	303.0	100,100
180	1.121	1.111	1.150	1.143	1.114	1.114	1.150	1.143	170-180	0.1053	303.1	100,100
DEG	LUMINOUS INTENSITY:cd									UNIT:lm		

C Range: 0 - 360DEG
 C Interval: 10.0DEG
 Test Speed: HIGH
 Temperature:25.3DEG
 Operators:LQL
 Test Date:10 December 2020

g Range: 0 - 180DEG
 Interval: 2.0DEG
 Test System:EVERFINE GO-2000B_V1 SYSTEM V2.0.403
 Humidity:65.0%
 Test Distance:10.258m [K=1.0000]
 Remarks: ZG2BRM23L00 HEP LSTC10W350P

LUMINANCE LIMITATION CURVES

Test:U:230.44V I:0.0337A P:7.3390W PF:0.9443 Freq:49.99Hz Lamp Flux:303.106x1 lm		
NAME: (Key -light)New kube 6W color toning LED	waTYPEight	WEIGHT:
SPEC.:	DIM.:	SERIAL No.:
MFR.: CG LIGHTING	SUR.:	Shielding Angle:



LUMINANCE cd/(m2)		
G(DEG)	C0/180	C90/270
85	7	1633
80	4	1683
75	2	1882
70	2	1809
65	2	1920
60	1	1867
55	1	1927
50	1	1888
45	1	1928

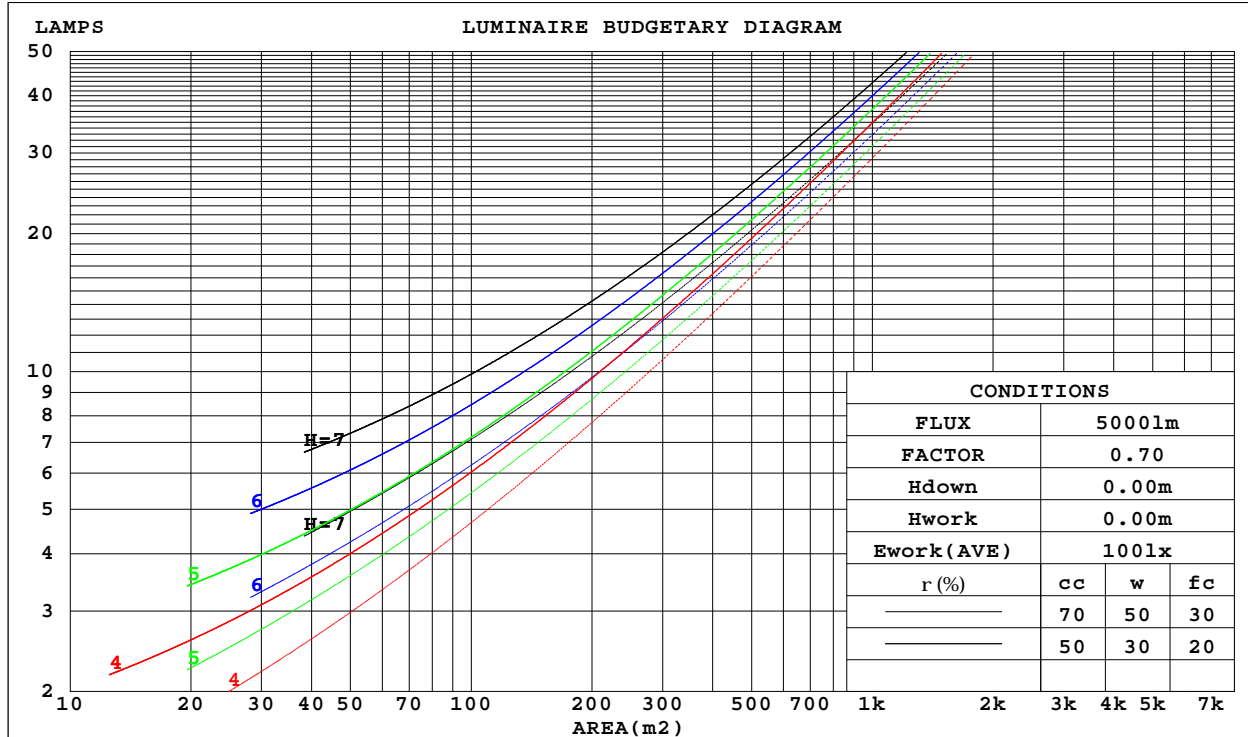
C Range: 0 - 360DEG
 C Interval: 10.0DEG
 Test Speed: HIGH
 Temperature:25.3DEG
 Operators:LQL
 Test Date:10 December 2020

G Range: 0 - 180DEG
 G Interval: 2.0DEG
 Test System:EVERFINE GO-2000B_V1 SYSTEM V2.0.403
 Humidity:65.0%
 Test Distance:10.258m [K=1.0000]
 Remarks: ZG2BRM23L00 HEP LSTC10W350P

CU AND LUMINAIRE BUDGETARY ESTIMATE DIAGRAM

Test:U:230.44V I:0.0337A P:7.3390W PF:0.9443 Freq:49.99Hz Lamp Flux:303.106x1 lm		
NAME: (Key -light)New kube 6W color toning LED	waTYPEight	WEIGHT:
SPEC.:	DIM.:	SERIAL No.:
MFR.: CG LIGHTING	SUR.:	Shielding Angle:

r _{cc}	80%			70%			50%			30%			10%			0
r _w	50%	30%	10%	50%	30%	10%	50%	30%	10%	50%	30%	10%	50%	30%	10%	0
r _{fc}	20%			20%			20%			20%			20%			0
RCR	RCR:Room Cavity Ratio						Coefficients of Utilization(CU)									
0.0	1.17	1.17	1.17	1.14	1.14	1.14	1.07	1.07	1.07	1.01	1.01	1.01	.95	.95	.95	.93
1.0	1.00	.95	.91	.97	.93	.89	.91	.88	.84	.86	.83	.81	.81	.79	.77	.74
2.0	.85	.77	.71	.82	.75	.69	.78	.72	.67	.73	.68	.64	.69	.65	.61	.59
3.0	.73	.63	.56	.70	.62	.55	.66	.59	.53	.62	.56	.51	.59	.54	.49	.47
4.0	.63	.53	.45	.61	.52	.45	.57	.49	.43	.54	.47	.42	.51	.45	.40	.38
5.0	.55	.45	.37	.53	.44	.37	.50	.42	.36	.47	.40	.34	.44	.38	.33	.31
6.0	.48	.38	.31	.47	.37	.30	.44	.36	.30	.41	.34	.29	.39	.33	.28	.25
7.0	.42	.33	.26	.41	.32	.26	.39	.31	.25	.37	.30	.24	.35	.28	.23	.21
8.0	.38	.28	.22	.37	.28	.22	.35	.27	.21	.33	.26	.20	.31	.25	.20	.18
9.0	.34	.25	.19	.33	.24	.19	.31	.23	.18	.30	.23	.18	.28	.22	.17	.15
10.0	.31	.22	.16	.30	.22	.16	.28	.21	.16	.27	.20	.15	.25	.19	.15	.13



C Range: 0 - 360DEG
 C Interval: 10.0DEG
 Test Speed: HIGH
 Temperature:25.3DEG
 Operators:LQL
 Test Date:10 December 2020

Range: 0 - 180DEG
 Interval: 2.0DEG
 Test System:EVERFINE GO-2000B_V1 SYSTEM V2.0.403
 Humidity:65.0%
 Test Distance:10.258m [K=1.0000]
 Remarks: ZG2BRM23L00 HEP LSTC10W350P

WEC AND CCEC

Test:U:230.44V I:0.0337A P:7.3390W PF:0.9443 Freq:49.99Hz Lamp Flux:303.106x1 lm		
NAME: (Key -light)New kube 6W color toning LED	waTYPEight	WEIGHT:
SPEC.:	DIM.:	SERIAL No.:
MFR.: CG LIGHTING	SUR.:	Shielding Angle:

rcc	80%			70%			50%			30%			10%			0
rw	50%	30%	10%	50%	30%	10%	50%	30%	10%	50%	30%	10%	50%	30%	10%	0
rfc	20%			20%			20%			20%			20%			0
RCR	RCR:Room Cavity Ratio						Wall Exitance Coefficients(WEC)									
0.0																
1.0	.350	.199	.063	.340	.194	.062	.323	.185	.059	.307	.177	.057	.292	.169	.055	
2.0	.327	.179	.055	.319	.176	.054	.303	.169	.052	.288	.162	.051	.275	.156	.049	
3.0	.301	.160	.048	.294	.157	.047	.280	.152	.046	.266	.146	.045	.254	.141	.044	
4.0	.277	.144	.042	.270	.141	.042	.257	.136	.041	.245	.132	.040	.234	.127	.039	
5.0	.255	.130	.038	.249	.128	.037	.237	.123	.036	.226	.119	.035	.216	.115	.035	
6.0	.235	.118	.034	.230	.116	.033	.219	.112	.033	.209	.109	.032	.200	.105	.031	
7.0	.218	.108	.031	.213	.106	.030	.204	.103	.030	.195	.100	.029	.186	.097	.028	
8.0	.203	.099	.028	.198	.098	.028	.190	.095	.027	.181	.092	.027	.174	.089	.026	
9.0	.190	.092	.026	.185	.090	.025	.177	.088	.025	.170	.085	.024	.163	.083	.024	
10.0	.178	.085	.024	.174	.084	.023	.166	.082	.023	.160	.079	.023	.153	.077	.022	

rcc	80%			70%			50%			30%			10%			0
rw	50%	30%	10%	50%	30%	10%	50%	30%	10%	50%	30%	10%	50%	30%	10%	0
rfc	20%			20%			20%			20%			20%			0
RCR	RCR:Room Cavity Ratio						Ceiling Cavity Exitance Coefficients(CCEC)									
0.0	.246	.246	.246	.210	.210	.210	.144	.144	.144	.083	.083	.083	.026	.026	.026	
1.0	.239	.212	.187	.205	.182	.161	.140	.125	.112	.081	.072	.065	.026	.023	.021	
2.0	.234	.188	.150	.200	.162	.130	.137	.112	.091	.079	.065	.053	.025	.021	.017	
3.0	.227	.171	.127	.195	.148	.110	.134	.103	.077	.077	.060	.045	.025	.019	.015	
4.0	.221	.159	.111	.189	.137	.097	.130	.096	.068	.075	.056	.040	.024	.018	.013	
5.0	.214	.149	.101	.184	.129	.088	.127	.090	.062	.073	.053	.037	.024	.017	.012	
6.0	.207	.141	.094	.178	.122	.081	.123	.085	.058	.071	.050	.034	.023	.016	.011	
7.0	.200	.134	.088	.172	.117	.077	.119	.082	.054	.069	.048	.032	.022	.016	.011	
8.0	.194	.129	.084	.167	.112	.073	.115	.078	.052	.067	.046	.031	.022	.015	.010	
9.0	.188	.124	.081	.162	.108	.071	.112	.076	.050	.065	.045	.030	.021	.015	.010	
10.0	.182	.120	.079	.157	.104	.069	.109	.073	.049	.063	.043	.029	.021	.014	.010	

C Range: 0 - 360DEG
 C Interval: 10.0DEG
 Test Speed: HIGH
 Temperature:25.3DEG
 Operators:LQL
 Test Date:10 December 2020

g Range: 0 - 180DEG
 g Interval: 2.0DEG
 Test System:EVERFINE GO-2000B_V1 SYSTEM V2.0.403
 Humidity:65.0%
 Test Distance:10.258m [K=1.0000]
 Remarks: ZG2BRM23L00 HEP LSTC10W350P

UGR(Unified Glare Rating) Table

Test:U:230.44V I:0.0337A P:7.3390W PF:0.9443 Freq:49.99Hz Lamp Flux:303.106x1 lm										
NAME: (Key -light)New kube 6W color toning LED					waTYPEight			WEIGHT:		
SPEC.:					DIM.:			SERIAL No.:		
MFR.: CG LIGHTING					SUR.:			Shielding Angle:		
ceiling/cavity	0.7	0.7	0.5	0.5	0.3	0.7	0.7	0.5	0.5	0.3
walls	0.5	0.3	0.5	0.3	0.3	0.5	0.3	0.5	0.3	0.3
working plane	0.2	0.2	0.2	0.2	0.2	0.2	0.2	0.2	0.2	0.2
Room dimensions	Viewed crosswise					Viewed endwise				
x = 2H y = 2H	10.8	12.4	11.2	12.8	13.1	21.4	23.0	21.7	23.3	23.7
3H	10.6	12.0	11.0	12.4	12.8	23.1	24.5	23.5	24.9	25.3
4H	10.4	11.8	10.9	12.2	12.7	23.8	25.2	24.2	25.5	26.0
6H	10.3	11.6	10.8	12.0	12.5	24.3	25.6	24.8	26.0	26.5
8H	10.3	11.5	10.7	11.9	12.4	24.5	25.7	24.9	26.2	26.6
12H	10.2	11.4	10.7	11.8	12.3	24.5	25.7	25.0	26.2	26.6
4H 2H	16.1	17.5	16.5	17.9	18.3	21.7	23.1	22.1	23.5	23.9
3H	16.2	17.4	16.6	17.8	18.3	23.7	24.9	24.2	25.3	25.8
4H	16.1	17.2	16.5	17.6	18.1	24.6	25.7	25.1	26.1	26.6
6H	15.9	16.9	16.5	17.4	17.9	25.3	26.3	25.8	26.8	27.3
8H	15.9	16.8	16.4	17.3	17.9	25.5	26.4	26.1	26.9	27.5
12H	15.8	16.7	16.4	17.2	17.8	25.6	26.4	26.1	27.0	27.5
8H 4H	18.3	19.2	18.8	19.7	20.2	24.7	25.6	25.2	26.1	26.6
6H	18.3	19.1	18.9	19.6	20.2	25.6	26.4	26.2	26.9	27.5
8H	18.3	18.9	18.8	19.5	20.1	26.0	26.6	26.5	27.2	27.8
12H	18.2	18.8	18.8	19.4	20.0	26.1	26.7	26.7	27.3	27.9
12H 4H	18.7	19.5	19.2	20.0	20.6	24.6	25.5	25.2	26.0	26.6
6H	19.0	19.6	19.5	20.2	20.8	25.6	26.3	26.2	26.9	27.5
8H	19.0	19.6	19.6	20.2	20.8	26.0	26.6	26.6	27.2	27.8
Variations with the observer position at spacings:										
S = 1.0H	+ 0.4 / - 0.5					+ 0.1 / - 0.1				
1.5H	+ 0.9 / - 0.9					+ 0.2 / - 0.3				
2.0H	+ 2.0 / - 1.9					+ 0.2 / - 0.3				

CIE Pub.117, 303.1 lm Total Lamp Luminous Flux Correct (8log(F/F0) = -4.1)

C Range: 0 - 360DEG
 C Interval: 10.0DEG
 Test Speed: HIGH
 Temperature:25.3DEG
 Operators:LQL
 Test Date:10 December 2020

g Range: 0 - 180DEG
 g Interval: 2.0DEG
 Test System:EVERFINE GO-2000B_V1 SYSTEM V2.0.403
 Humidity:65.0%
 Test Distance:10.258m [K=1.0000]
 Remarks: ZG2BRM23L00 HEP LSTC10W350P

UTILIZATION FACTORS TABLE

Test:U:230.44V I:0.0337A P:7.3390W PF:0.9443 Freq:49.99Hz Lamp Flux:303.106x1 lm		
NAME: (Key -light)New kube 6W color toning LED	waTYPHeight	WEIGHT:
SPEC.:	DIM.:	SERIAL No.:
MFR.: CG LIGHTING	SUR.:	Shielding Angle:

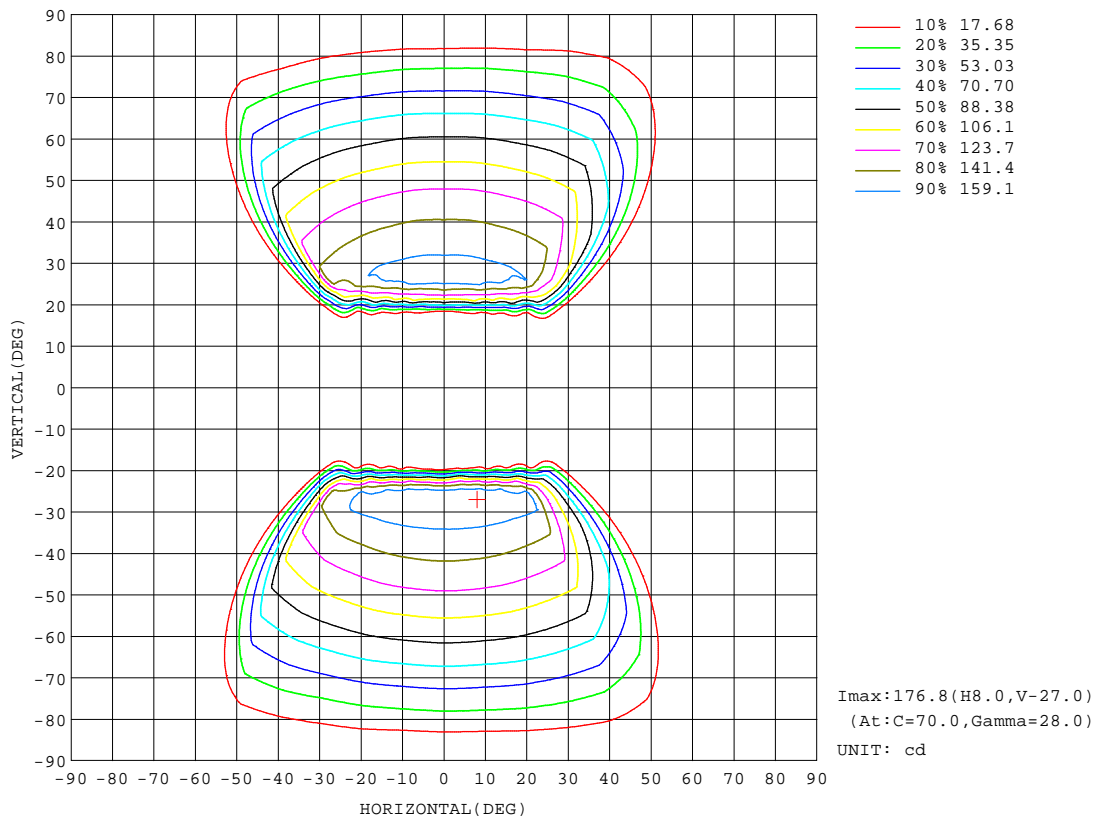
REFLECTANCE										
Ceiling	0.8	0.8	0.8	0.7	0.7	0.7	0.5	0.5	0.5	0
Walls	0.7	0.5	0.3	0.7	0.5	0.3	0.7	0.5	0.3	0
Working plane	0.2	0.2	0.2	0.2	0.2	0.2	0.2	0.2	0.2	0
ROOM INDEX	UTILIZATION FACTORS(PERCENT) k(RI) x RCR = 5									
k = 0.60	47	34	26	46	34	26	45	33	26	19
0.80	58	44	36	56	44	36	54	43	35	27
1.00	67	54	46	65	53	45	62	55	44	36
1.25	75	63	54	73	62	54	69	60	52	43
1.50	80	69	61	78	68	60	74	65	58	49
2.00	89	78	71	86	77	70	82	74	68	58
2.50	93	84	77	91	82	76	86	79	73	62
3.00	97	89	82	94	87	81	89	83	78	67
4.00	102	95	89	99	93	88	93	88	84	72
5.00	105	99	94	101	96	92	96	91	88	76
ROOM INDEX	UF(total)									Direct
According to DIN EN 13032-2 2004			Suspended				SHRNOM = 1.25			

C Range: 0 - 360DEG
 C Interval: 10.0DEG
 Test Speed: HIGH
 Temperature:25.3DEG
 Operators:LQL
 Test Date:10 December 2020

g Range: 0 - 180DEG
 Interval: 2.0DEG
 Test System:EVERFINE GO-2000B_V1 SYSTEM V2.0.403
 Humidity:65.0%
 Test Distance:10.258m [K=1.0000]
 Remarks: ZG2BRM23L00 HEP LSTC10W350P

ISOCANDELA DIAGRAM

Test:U:230.44V I:0.0337A P:7.3390W PF:0.9443 Freq:49.99Hz Lamp Flux:303.106x1 lm		
NAME: (Key -light)New kube 6W color toning LED	waTYPEight	WEIGHT:
SPEC.:	DIM.:	SERIAL No.:
MFR.: CG LIGHTING	SUR.:	Shielding Angle:

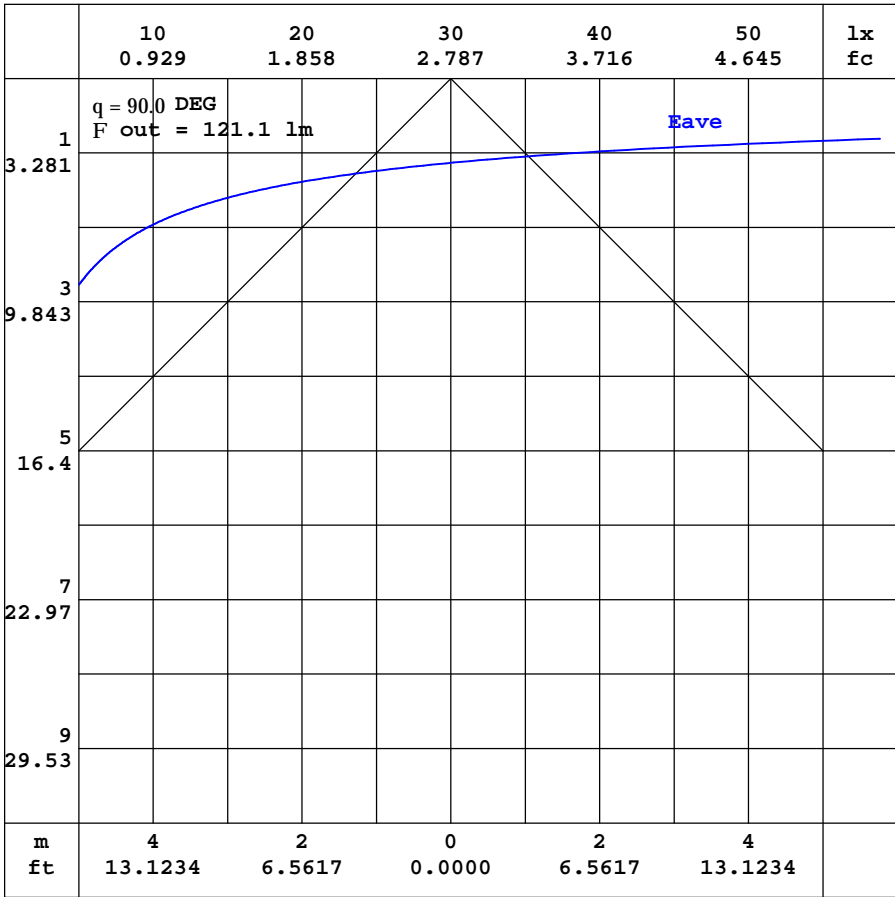


C Range: 0 - 360DEG
 C Interval: 10.0DEG
 Test Speed: HIGH
 Temperature:25.3DEG
 Operators:LQL
 Test Date:10 December 2020

Range: 0 - 180DEG
 Interval: 2.0DEG
 Test System:EVERFINE GO-2000B_V1 SYSTEM V2.0.403
 Humidity:65.0%
 Test Distance:10.258m [K=1.0000]
 Remarks: ZG2BRM23L00 HEP LSTC10W350P

AAI CURVES

Test:U:230.44V I:0.0337A P:7.3390W PF:0.9443 Freq:49.99Hz Lamp Flux:303.106x1 lm		
NAME: (Key -light)New kube 6W color toning LED	waTYPHeight	WEIGHT:
SPEC.:	DIM.:	SERIAL No.:
MFR.: CG LIGHTING	SUR.:	Shielding Angle:



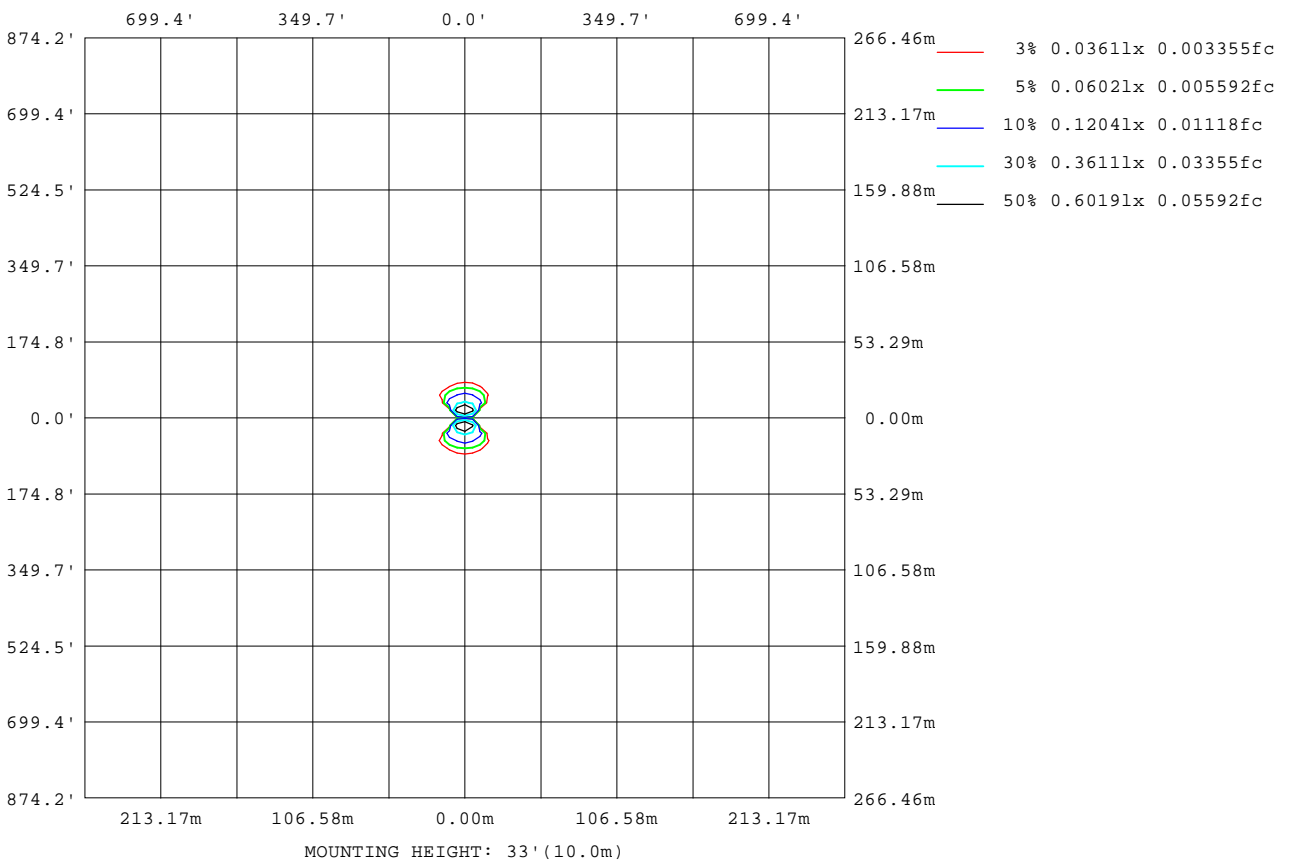
Note:The Curves indicate the illuminated area and the average illumination when the luminaire is at different distance.

C Range: 0 - 360DEG
 C Interval: 10.0DEG
 Test Speed: HIGH
 Temperature:25.3DEG
 Operators:LQL
 Test Date:10 December 2020

Range: 0 - 180DEG
 Interval: 2.0DEG
 Test System:EVERFINE GO-2000B_V1 SYSTEM V2.0.403
 Humidity:65.0%
 Test Distance:10.258m [K=1.0000]
 Remarks: ZG2BRM23L00 HEP LSTC10W350P

ISOLUX DIAGRAM

Test:U:230.44V I:0.0337A P:7.3390W PF:0.9443 Freq:49.99Hz Lamp Flux:303.106x1 lm		
NAME: (Key -light)New kube 6W color toning LED	waTYPHeight	WEIGHT:
SPEC.:	DIM.:	SERIAL No.:
MFR.: CG LIGHTING	SUR.:	Shielding Angle:



C Range: 0 - 360DEG
 C Interval: 10.0DEG
 Test Speed: HIGH
 Temperature: 25.3DEG
 Operators: LQL
 Test Date: 10 December 2020

Range: 0 - 180DEG
 Interval: 2.0DEG
 Test System: EVERFINE GO-2000B_V1 SYSTEM V2.0.403
 Humidity: 65.0%
 Test Distance: 10.258m [K=1.0000]
 Remarks: ZG2BRM23L00 HEP LSTC10W350P

LED Avg.L Report

Test:U:230.44V I:0.0337A P:7.3390W PF:0.9443 Freq:49.99Hz Lamp Flux:303.106x1 lm		
NAME: (Key -light)New kube 6W color toning LED	waTYPEight	WEIGHT:
SPEC.:	DIM.:	SERIAL No.:
MFR.: CG LIGHTING	SUR.:	Shielding Angle:

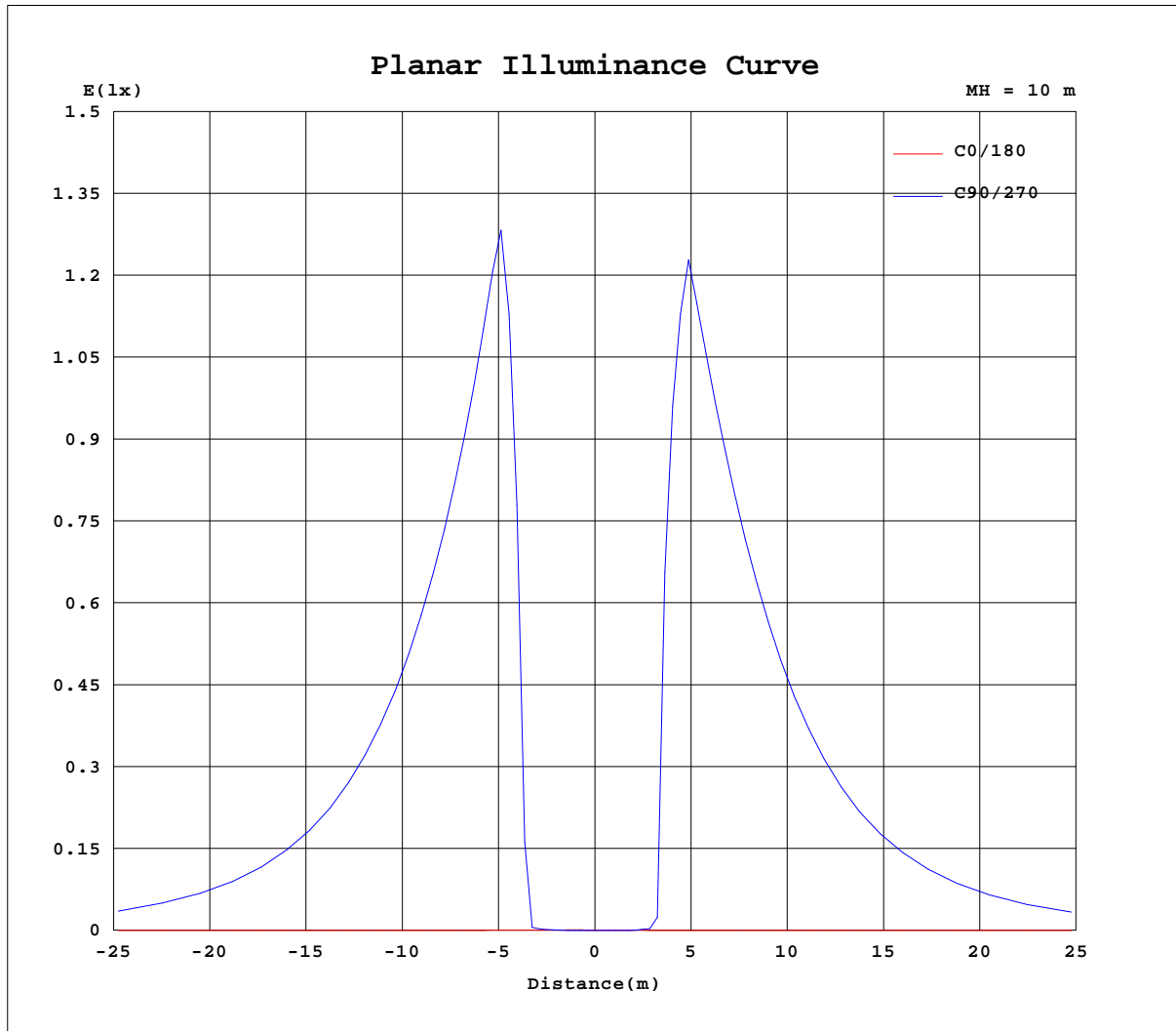
AvgL	cd/m2
L_0~180(65)av	2
L_0~180(75)av	3
L_0~180(85)av	8
L_90~270(65)av	1801
L_90~270(75)av	1683
L_90~270(85)av	1113
L_45(65)av	1710
L_45(75)av	1485
L_45(85)av	639

Standard: GB/T 29293-2012

C Range: 0 - 360DEG
 C Interval: 10.0DEG
 Test Speed: HIGH
 Temperature:25.3DEG
 Operators:LQL
 Test Date:10 December 2020

g Range: 0 - 180DEG
 Interval: 2.0DEG
 Test System:EVERFINE GO-2000B_V1 SYSTEM V2.0.403
 Humidity:65.0%
 Test Distance:10.258m [K=1.0000]
 Remarks: ZG2BRM23L00 HEP LSTC10W350P

Planar Illuminance Curve



C Range: 0 - 360DEG
 C Interval: 10.0DEG
 Test Speed: HIGH
 Temperature: 25.3DEG
 Operators: LQL
 Test Date: 10 December 2020

Page Range: 0 - 180DEG
 Interval: 2.0DEG
 Test System: EVERFINE GO-2000B_V1 SYSTEM V2.0.403
 Humidity: 65.0%
 Test Distance: 10.258m [K=1.0000]
 Remarks: ZG2BRM23L00 HEP LSTC10W350P

LUMINOUS DISTRIBUTION INTENSITY DATA

Test:U:230.44V I:0.0337A P:7.3390W PF:0.9443 Freq:49.99Hz Lamp Flux:303.106x1 lm		
NAME: (Key -light)New kube 6W color toning LED	waTYPEight	WEIGHT:
SPEC.:	DIM.:	SERIAL No.:
MFR.: CG LIGHTING	SUR.:	Shielding Angle:

Table--1

UNIT: cd

C(DEG) g (DEG)	0	10	20	30	40	50	60	70	80	90	100	110	120	130	140	150	160	170	180
0	0.11	0.11	0.12	0.12	0.11	0.07	0.04	0.03	0.02	0.01	0.02	0.02	0.04	0.06	0.12	0.13	0.12	0.11	0.11
5	0.12	0.11	0.12	0.11	0.11	0.07	0.04	0.04	0.02	0.04	0.02	0.03	0.04	0.10	0.11	0.11	0.12	0.11	0.10
10	0.11	0.11	0.13	0.13	0.10	0.10	0.04	0.09	0.02	0.09	0.02	0.09	0.05	0.13	0.11	0.13	0.11	0.10	0.06
15	0.11	0.11	0.11	0.15	0.11	0.17	0.11	0.22	0.19	0.21	0.20	0.22	0.15	0.20	0.12	0.16	0.11	0.10	0.06
20	0.09	0.11	0.12	0.20	0.26	0.49	0.68	1.79	20.8	19.6	14.2	1.71	0.90	0.65	0.32	0.22	0.11	0.11	0.06
25	0.09	0.11	0.12	0.31	0.56	1.79	77.6	131	147	148	146	130	73.5	1.88	0.78	0.36	0.11	0.12	0.06
30	0.09	0.13	0.23	0.69	47.5	143	174	173	171	170	171	172	173	142	42.9	0.91	0.24	0.14	0.06
35	0.08	0.15	0.36	1.19	93.2	167	163	161	160	159	160	161	163	166	129	1.55	0.44	0.16	0.06
40	0.06	0.21	0.77	2.07	93.4	149	147	147	146	146	146	146	146	149	142	2.62	0.81	0.21	0.07
45	0.06	0.26	1.18	2.37	89.6	138	137	137	136	136	136	136	136	138	132	2.89	1.23	0.24	0.08
50	0.06	0.36	1.81	2.44	81.6	122	122	122	121	121	121	121	121	121	117	2.90	1.92	0.36	0.08
55	0.06	0.45	1.96	2.32	75.2	111	111	111	110	111	110	110	110	110	106	2.76	2.09	0.45	0.08
60	0.06	0.56	1.93	2.04	64.1	92.5	93.0	93.5	93.1	93.3	92.7	92.8	92.1	92.3	89.0	2.44	2.06	0.54	0.08
65	0.06	0.54	1.79	1.80	55.8	79.6	80.5	81.2	80.7	81.1	80.3	80.5	79.5	79.7	76.5	2.20	1.94	0.54	0.08
70	0.06	0.46	1.49	1.48	42.3	59.5	61.0	61.8	61.5	61.9	61.0	60.8	59.6	59.4	56.5	1.83	1.66	0.45	0.08
75	0.06	0.44	1.29	1.29	32.6	45.9	47.7	48.6	48.3	48.7	47.7	47.2	45.5	45.5	42.8	1.57	1.45	0.44	0.08
80	0.06	0.34	1.01	1.02	18.4	26.2	28.4	29.4	29.0	29.2	27.7	27.3	25.2	24.2	21.5	1.26	1.14	0.35	0.08
85	0.06	0.34	0.84	0.89	9.60	13.3	14.0	14.5	13.9	14.2	13.1	13.5	11.7	10.3	7.53	1.12	0.96	0.36	0.08
90	0.06	0.25	0.67	0.80	1.19	3.12	6.62	7.64	8.17	8.28	8.20	7.72	6.73	4.51	1.51	0.92	0.76	0.26	0.09
95	0.06	0.25	0.60	0.80	1.26	3.54	7.23	8.36	8.91	9.04	8.93	8.42	7.34	4.94	1.67	0.92	0.66	0.25	0.09
100	0.09	0.25	0.54	0.80	1.47	4.32	8.21	9.44	10.1	10.2	10.1	9.50	8.33	5.77	1.93	0.91	0.56	0.25	0.09
105	0.11	0.26	0.51	0.81	1.67	4.92	8.87	10.2	10.8	11.0	10.8	10.2	9.00	6.36	2.18	0.91	0.51	0.26	0.11
110	0.12	0.29	0.49	0.81	1.96	5.91	9.89	11.3	11.9	12.2	12.0	11.3	10.00	7.29	2.59	0.91	0.49	0.28	0.15
115	0.21	0.32	0.48	0.79	2.13	6.60	10.5	12.0	12.7	12.9	12.7	12.0	10.7	7.94	2.84	0.86	0.47	0.32	0.18
120	0.34	0.38	0.48	0.71	1.31	7.02	11.4	12.9	13.7	13.9	13.7	12.9	11.5	8.30	1.64	0.79	0.53	0.39	0.28
125	0.34	0.44	0.53	0.71	0.97	2.72	10.3	13.1	14.1	14.4	14.1	13.1	10.4	3.33	1.12	0.81	0.57	0.43	0.34
130	0.45	0.51	0.55	0.71	0.86	1.04	1.73	3.69	6.26	8.34	6.66	3.99	1.89	1.24	1.02	0.85	0.61	0.50	0.43
135	0.49	0.56	0.56	0.71	0.84	0.98	1.24	1.56	2.00	2.29	2.09	1.68	1.34	1.16	1.02	0.89	0.67	0.54	0.50
140	0.57	0.62	0.59	0.71	0.82	0.93	1.12	1.26	1.42	1.48	1.49	1.36	1.25	1.16	1.03	0.92	0.71	0.61	0.60
145	0.66	0.66	0.66	0.71	0.79	0.93	1.09	1.23	1.34	1.38	1.41	1.31	1.24	1.16	1.03	0.94	0.79	0.66	0.66
150	0.74	0.71	0.70	0.72	0.78	0.83	0.99	1.11	1.22	1.26	1.29	1.24	1.17	1.11	1.03	0.97	0.81	0.75	0.76
155	0.80	0.75	0.70	0.74	0.76	0.81	0.92	1.01	1.14	1.16	1.21	1.14	1.12	1.10	1.03	0.99	0.89	0.81	0.83
160	0.86	0.84	0.80	0.82	0.80	0.81	0.85	0.92	1.01	1.04	1.10	1.11	1.10	1.13	1.10	1.03	0.91	0.87	0.90
165	0.91	0.91	0.90	0.89	0.87	0.86	0.88	0.94	0.99	1.06	1.11	1.13	1.14	1.15	1.12	1.06	0.94	0.93	0.96
170	1.01	1.01	0.97	0.99	0.94	0.98	0.99	1.06	1.14	1.16	1.15	1.16	1.15	1.16	1.14	1.09	1.01	1.01	1.04
175	1.04	1.06	1.02	1.06	1.01	1.05	1.05	1.14	1.15	1.15	1.15	1.15	1.15	1.16	1.14	1.11	1.04	1.07	1.08
180	1.12	1.12	1.11	1.10	1.09	1.13	1.14	1.14	1.15	1.15	1.15	1.16	1.16	1.15	1.14	1.12	1.11	1.11	1.11

C Range: 0 - 360DEG
 C Interval: 10.0DEG
 Test Speed: HIGH
 Temperature:25.3DEG
 Operators:LQL
 Test Date:10 December 2020

g Range: 0 - 180DEG
 Interval: 2.0DEG
 Test System:EVERFINE GO-2000B_V1 SYSTEM V2.0.403
 Humidity:65.0%
 Test Distance:10.258m [K=1.0000]
 Remarks: ZG2BRM23L00 HEP LSTC10W350P

LUMINOUS DISTRIBUTION INTENSITY DATA

Test:U:230.44V I:0.0337A P:7.3390W PF:0.9443 Freq:49.99Hz Lamp Flux:303.106x1 lm		
NAME: (Key -light)New kube 6W color toning LED	waTYPRight	WEIGHT:
SPEC.:	DIM.:	SERIAL No.:
MFR.: CG LIGHTING	SUR.:	Shielding Angle:

Table--2

UNIT: cd

C(DEG) g (DEG)	190	200	210	220	230	240	250	260	270	280	290	300	310	320	330	340	350		
0	0.11	0.12	0.12	0.11	0.07	0.04	0.03	0.02	0.01	0.02	0.02	0.04	0.06	0.12	0.13	0.12	0.11		
5	0.11	0.12	0.12	0.11	0.07	0.05	0.01	0.04	0.01	0.04	0.02	0.06	0.06	0.12	0.12	0.11	0.11		
10	0.12	0.12	0.12	0.16	0.10	0.14	0.09	0.14	0.06	0.13	0.09	0.12	0.09	0.14	0.13	0.12	0.11		
15	0.11	0.13	0.12	0.23	0.21	0.30	0.33	0.36	0.29	0.36	0.30	0.27	0.20	0.21	0.13	0.12	0.11		
20	0.11	0.18	0.27	0.54	0.83	1.48	32.6	64.7	79.0	66.4	37.7	1.39	0.64	0.45	0.21	0.15	0.10		
25	0.11	0.25	0.44	1.02	26.8	106	126	140	148	141	128	108	38.1	0.82	0.36	0.22	0.11		
30	0.11	0.41	1.07	79.9	136	165	164	163	163	163	164	165	141	86.5	0.80	0.35	0.11		
35	0.12	0.58	1.70	122	158	157	156	156	155	156	156	157	157	111	1.26	0.49	0.11		
40	0.21	0.99	2.36	144	144	144	143	143	142	143	143	144	144	109	1.79	0.89	0.21		
45	0.34	1.38	2.51	134	134	134	134	134	133	134	134	134	135	100	1.95	1.24	0.24		
50	0.46	1.86	2.47	117	119	119	118	119	118	119	119	119	119	86.4	2.00	1.63	0.40		
55	0.54	1.94	2.34	106	108	108	107	108	107	108	108	108	108	76.9	1.93	1.70	0.49		
60	0.66	1.90	2.09	87.9	89.6	89.9	89.6	90.1	89.7	90.4	90.1	90.6	89.9	62.3	1.72	1.67	0.59		
65	0.66	1.79	1.92	75.1	76.9	77.3	77.1	77.7	77.4	78.1	77.7	78.1	76.9	52.2	1.57	1.56	0.60		
70	0.61	1.56	1.65	54.7	56.8	57.8	57.7	58.4	58.1	58.7	58.3	58.6	56.6	37.6	1.36	1.34	0.56		
75	0.54	1.36	1.47	39.3	42.0	43.9	44.1	45.2	45.0	45.6	45.1	45.3	43.0	27.9	1.22	1.14	0.50		
80	0.45	1.11	1.24	15.8	17.3	20.6	22.9	25.0	25.4	26.4	26.0	26.2	23.5	14.5	1.01	0.90	0.41		
85	0.40	0.94	1.12	3.42	5.54	8.53	9.26	10.0	9.82	10.3	10.1	11.0	9.35	6.36	0.93	0.81	0.36		
90	0.36	0.79	1.00	1.57	4.65	6.82	7.75	8.22	8.33	8.15	7.61	6.47	3.18	1.20	0.83	0.64	0.31		
95	0.32	0.67	0.97	1.71	5.08	7.40	8.50	8.96	9.07	8.87	8.28	7.04	3.57	1.29	0.80	0.56	0.29		
100	0.28	0.57	0.93	1.97	5.81	8.38	9.55	10.1	10.2	9.96	9.32	7.94	4.26	1.49	0.79	0.48	0.26		
105	0.29	0.53	0.93	2.18	6.34	9.00	10.2	10.8	10.9	10.7	9.99	8.53	4.77	1.63	0.80	0.47	0.25		
110	0.27	0.51	0.93	2.53	7.25	9.97	11.3	11.9	12.0	11.8	11.0	9.42	5.60	1.85	0.82	0.47	0.25		
115	0.32	0.53	0.86	2.61	7.86	10.6	11.9	12.5	12.7	12.4	11.6	9.97	6.17	1.86	0.78	0.50	0.29		
120	0.34	0.58	0.81	1.37	6.74	11.2	12.7	13.3	13.5	13.2	12.4	10.6	5.00	1.13	0.71	0.52	0.34		
125	0.39	0.61	0.80	1.09	2.22	7.99	12.0	13.3	13.6	13.2	11.5	6.92	1.84	0.91	0.71	0.55	0.41		
130	0.46	0.67	0.83	1.04	1.24	1.73	2.86	4.40	4.82	4.20	2.64	1.59	1.10	0.81	0.70	0.59	0.46		
135	0.54	0.72	0.90	1.05	1.19	1.34	1.62	1.93	2.03	1.86	1.53	1.24	1.03	0.81	0.70	0.64	0.56		
140	0.63	0.79	0.91	1.06	1.16	1.26	1.36	1.43	1.45	1.36	1.26	1.11	0.98	0.80	0.71	0.69	0.66		
145	0.69	0.83	0.91	1.06	1.14	1.22	1.30	1.35	1.36	1.26	1.19	1.01	0.94	0.79	0.76	0.74	0.69		
150	0.80	0.89	0.98	1.07	1.09	1.13	1.17	1.23	1.21	1.14	1.06	0.92	0.86	0.81	0.78	0.79	0.79		
155	0.81	0.93	1.02	1.09	1.10	1.07	1.09	1.11	1.11	1.02	0.99	0.87	0.84	0.81	0.79	0.81	0.80		
160	0.91	0.99	1.03	1.12	1.14	1.09	1.06	1.04	1.00	0.96	0.91	0.86	0.83	0.87	0.88	0.91	0.91		
165	0.94	1.04	1.06	1.14	1.15	1.14	1.14	1.11	1.03	1.00	0.93	0.91	0.91	0.94	0.93	0.97	0.94		
170	1.02	1.07	1.11	1.15	1.16	1.16	1.15	1.16	1.17	1.18	1.12	1.06	1.01	1.06	1.01	1.06	1.04		
175	1.05	1.09	1.09	1.13	1.16	1.16	1.16	1.16	1.17	1.17	1.16	1.15	1.08	1.08	1.06	1.10	1.11		
180	1.11	1.10	1.09	1.10	1.13	1.14	1.14	1.15	1.15	1.16	1.16	1.16	1.15	1.14	1.12	1.12	1.12		

C Range: 0 - 360DEG
 C Interval: 10.0DEG
 Test Speed: HIGH
 Temperature:25.3DEG
 Operators:LQL
 Test Date:10 December 2020

g Range: 0 - 180DEG
 Interval: 2.0DEG
 Test System:EVERFINE GO-2000B_V1 SYSTEM V2.0.403
 Humidity:65.0%
 Test Distance:10.258m [K=1.0000]
 Remarks: ZG2BRM23L00 HEP LSTC10W350P