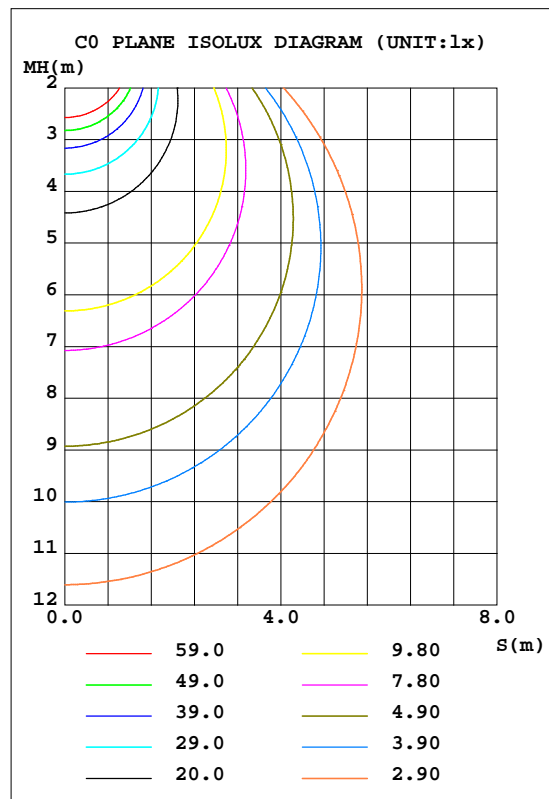
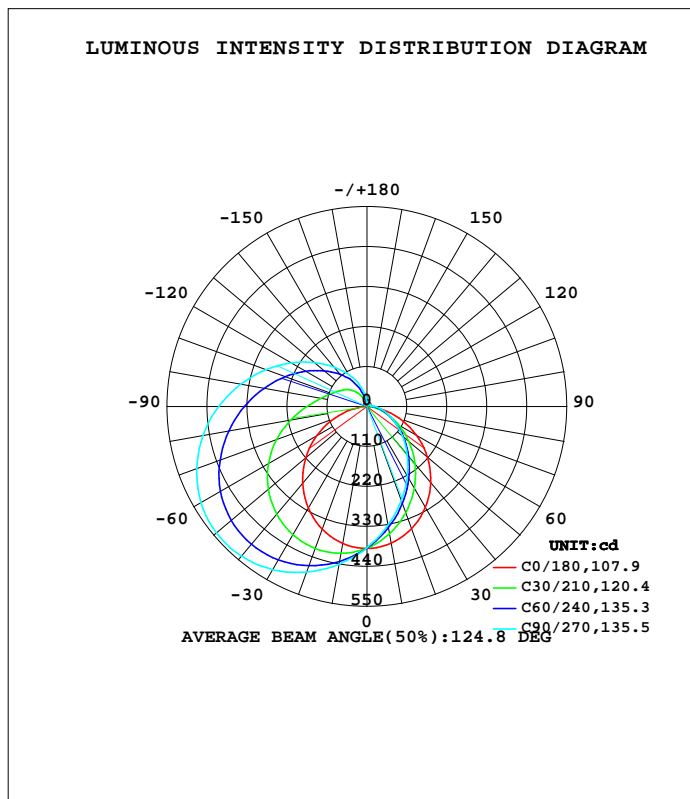


LUMINAIRE PHOTOMETRIC TEST REPORT

Test:U:230.56V I:0.0936A P:20.971W PF:0.9715 Freq:49.99Hz Lamp Flux:1980.59x1 lm		
NAME: Marilyn 18W switchable CCT	TYPE:	WEIGHT:
SPEC.:	DIM.:	SERIAL No.:
MFR.: CG LIGHTING	SUR.:	Shielding Angle:

DATA OF LAMP		PHOTOMETRIC DATA			
MODEL	1918C3-11P03	Imax(cd)	541.9	S/MH(C0/180)	1.24
NOMINAL POWER(W)		LOR(%)	100.0	S/MH(C90/270)	1.99
RATED VOLTAGE(V)	230.0	TOTAL FLUX(lm)	1980.6	h UP, DN(C0-180)	1.3, 20.0
NOMINAL FLUX(lm)	1980.59	CIE CLASS	SEMI-D.	h UP, DN(C180-360)	21.3, 57.4
LAMPS INSIDE	1	h up(%)	22.6	CIBSE SHR NOM	1.50
TEST VOLTAGE(V)	230.0	h down(%)	77.4	CIBSE SHR MAX	1.50



C Range: 0 - 360DEG
 C Interval: 10.0DEG
 Test Speed: HIGH
 Temperature:25.3DEG
 Operators:LQL
 Test Date:28 September 2021

Range: 0 - 180DEG
 Interval: 2.0DEG
 Test System:EVERFINE GO-2000B_V1 SYSTEM V2.0.403
 Humidity:65.0%
 Test Distance:10.365m [K=1.0000]
 Remarks: SMD BK-CWL022-B0600A

ZONAL FLUX DIAGRAM

ZONAL FLUX DIAGRAM:

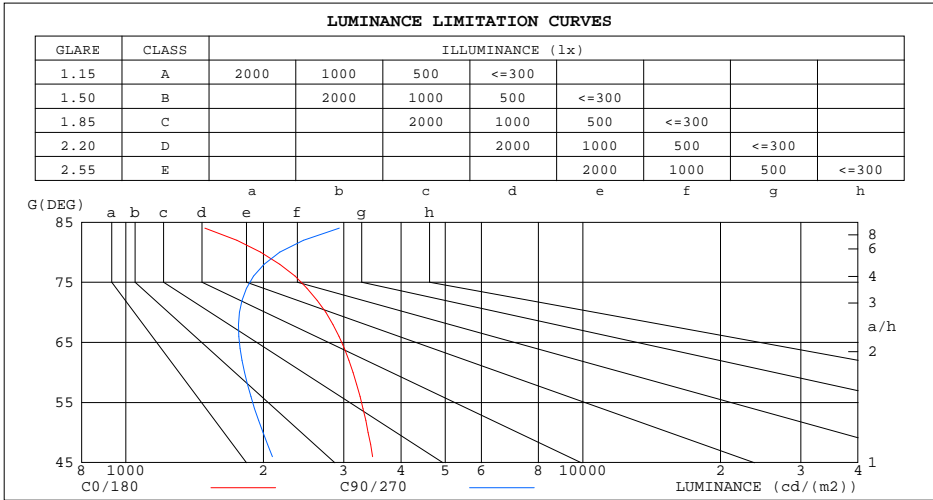
g	C0	C45	C90	C135	C180	C225	C270	C315	g	F zone	F total	%lum,lamp
10	382.2	345.8	332.2	345.3	382.8	422.0	439.9	419.9	0- 10	36.85	36.85	1.86,1.86
20	358.3	295.8	276.0	295.8	359.7	443.3	484.6	440.7	10- 20	106.6	143.5	7.25,7.25
30	320.8	242.5	222.1	242.9	323.0	450.8	518.2	447.3	20- 30	165.4	308.9	15.6,15.6
40	273.5	189.0	172.4	189.6	275.4	445.2	537.3	441.6	30- 40	207.5	516.4	26.1,26.1
50	218.0	138.5	128.4	139.3	220.0	426.2	541.0	422.1	40- 50	230.0	746.4	37.7,37.7
60	157.0	93.52	90.96	94.31	159.0	395.4	527.7	391.2	50- 60	232.3	978.7	49.4,49.4
70	93.68	56.60	60.62	57.23	95.32	354.1	498.5	349.8	60- 70	216.0	1195	60.3,60.3
80	34.23	29.99	37.73	30.39	35.53	306.6	457.8	302.8	70- 80	186.5	1381	69.7,69.7
90	2.229	14.32	22.10	14.49	2.479	258.9	408.2	255.9	80- 90	152.6	1534	77.4,77.4
100	3.436	8.015	13.13	7.993	3.609	215.2	353.5	212.7	90-100	124.0	1658	83.7,83.7
110	5.706	6.628	9.404	6.598	5.933	176.9	296.7	174.7	100-110	99.96	1758	88.8,88.8
120	8.531	6.661	8.143	6.535	8.810	143.1	240.9	142.3	110-120	78.02	1836	92.7,92.7
130	10.38	7.015	8.025	6.856	10.59	114.5	188.4	114.4	120-130	57.93	1894	95.6,95.6
140	11.13	7.299	7.974	7.067	11.37	86.79	142.0	90.08	130-140	40.19	1934	97.6,97.6
150	12.09	7.564	7.782	7.166	12.14	57.75	101.9	68.42	140-150	25.19	1959	98.9,98.9
160	14.60	7.756	7.553	7.225	14.70	30.56	67.16	44.20	150-160	13.64	1973	99.6,99.6
170	18.67	15.48	8.983	13.29	18.56	20.80	31.40	26.99	160-170	5.965	1979	99.9,99.9
180	20.06	19.99	13.25	19.74	20.09	20.02	13.31	19.82	170-180	1.799	1981	100,100
DEG	LUMINOUS INTENSITY:cd								UNIT:lm			

C Range: 0 - 360DEG
 C Interval: 10.0DEG
 Test Speed: HIGH
 Temperature:25.3DEG
 Operators:LQL
 Test Date:28 September 2021

g Range: 0 - 180DEG
 Interval: 2.0DEG
 Test System:EVERFINE GO-2000B_V1 SYSTEM V2.0.403
 Humidity:65.0%
 Test Distance:10.365m [K=1.0000]
 Remarks: SMD BK-CWL022-B0600A

LUMINANCE LIMITATION CURVES

Test:U:230.56V I:0.0936A P:20.971W PF:0.9715 Freq:49.99Hz Lamp Flux:1980.59x1 lm		
NAME: Marilyn 18W switchable CCT	TYPE:	WEIGHT:
SPEC.:	DIM.:	SERIAL No.:
MFR.: CG LIGHTING	SUR.:	Shielding Angle:



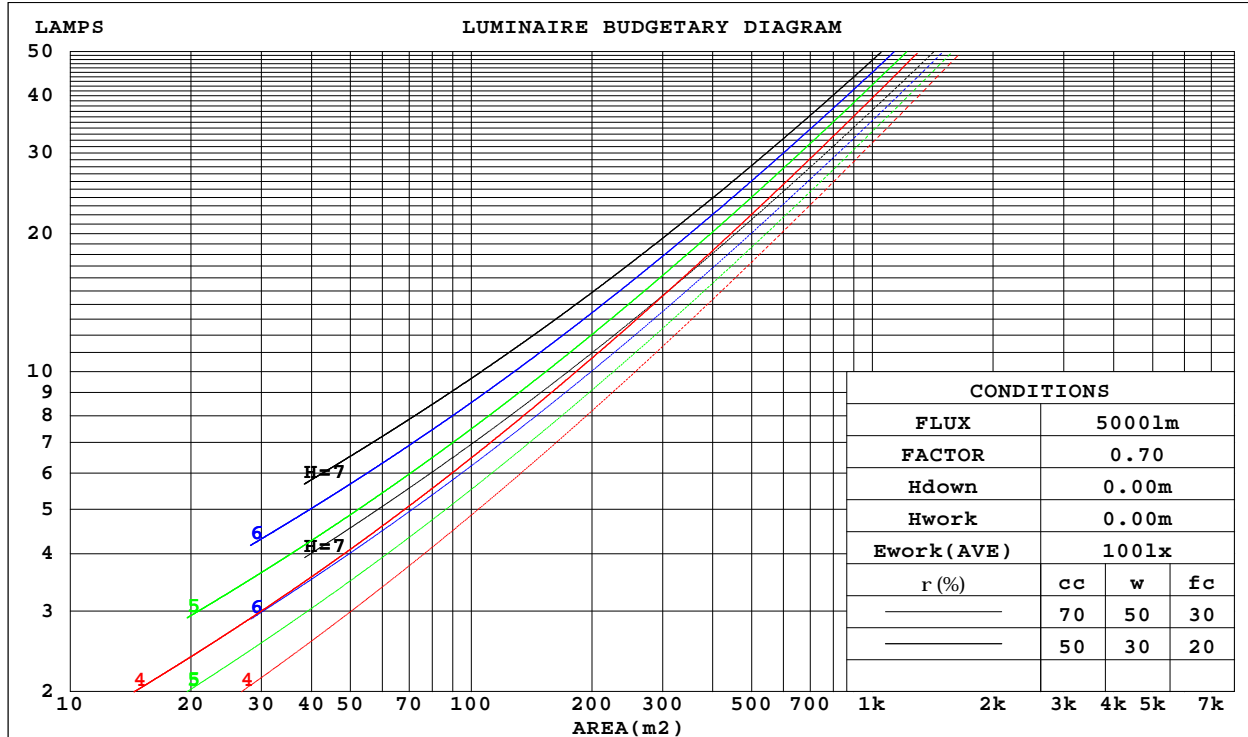
C Range: 0 - 360DEG
 C Interval: 10.0DEG
 Test Speed: HIGH
 Temperature:25.3DEG
 Operators:LQL
 Test Date:28 September 2021

G Range: 0 - 180DEG
 G Interval: 2.0DEG
 Test System:EVERFINE GO-2000B_V1 SYSTEM V2.0.403
 Humidity:65.0%
 Test Distance:10.365m [K=1.0000]
 Remarks: SMD BK-CWL022-B0600A

CU AND LUMINAIRE BUDGETARY ESTIMATE DIAGRAM

Test:U:230.56V I:0.0936A P:20.971W PF:0.9715 Freq:49.99Hz Lamp Flux:1980.59x1 lm		
NAME: Marilyn 18W switchable CCT	TYPE:	WEIGHT:
SPEC.:	DIM.:	SERIAL No.:
MFR.: CG LIGHTING	SUR.:	Shielding Angle:

r _{cc}	80%			70%			50%			30%			10%			0
r _w	50%	30%	10%	50%	30%	10%	50%	30%	10%	50%	30%	10%	50%	30%	10%	0
r _{fc}	20%			20%			20%			20%			20%			0
RCR	RCR:Room Cavity Ratio						Coefficients of Utilization(CU)									
0.0	1.14	1.14	1.14	1.08	1.08	1.08	.99	.99	.99	.90	.90	.90	.81	.81	.81	.77
1.0	.94	.89	.84	.90	.85	.81	.81	.77	.74	.74	.71	.68	.66	.64	.62	.58
2.0	.81	.73	.66	.77	.70	.64	.69	.64	.59	.63	.58	.54	.56	.53	.49	.46
3.0	.70	.61	.54	.66	.58	.52	.60	.53	.48	.54	.49	.44	.49	.45	.41	.37
4.0	.61	.52	.45	.58	.50	.43	.53	.46	.40	.48	.42	.37	.43	.38	.34	.31
5.0	.54	.45	.38	.52	.43	.37	.47	.40	.34	.43	.37	.32	.39	.33	.29	.26
6.0	.49	.39	.33	.46	.38	.31	.42	.35	.29	.38	.32	.27	.35	.30	.25	.23
7.0	.44	.35	.28	.42	.33	.28	.38	.31	.26	.35	.29	.24	.32	.26	.22	.20
8.0	.40	.31	.25	.38	.30	.24	.35	.28	.23	.32	.26	.21	.29	.24	.20	.18
9.0	.36	.28	.22	.35	.27	.22	.32	.25	.20	.29	.23	.19	.27	.22	.18	.16
10.0	.33	.25	.20	.32	.24	.19	.29	.23	.18	.27	.21	.17	.25	.20	.16	.14



C Range: 0 - 360DEG
 C Interval: 10.0DEG
 Test Speed: HIGH
 Temperature:25.3DEG
 Operators:LQL
 Test Date:28 September 2021

Range: 0 - 180DEG
 Interval: 2.0DEG
 Test System:EVERFINE GO-2000B_V1 SYSTEM V2.0.403
 Humidity:65.0%
 Test Distance:10.365m [K=1.0000]
 Remarks: SMD BK-CWL022-B0600A

WEC AND CCEC

Test:U:230.56V I:0.0936A P:20.971W PF:0.9715 Freq:49.99Hz Lamp Flux:1980.59x1 lm		
NAME: Marilyn 18W switchable CCT	TYPE:	WEIGHT:
SPEC.:	DIM.:	SERIAL No.:
MFR.: CG LIGHTING	SUR.:	Shielding Angle:

rcc	80%			70%			50%			30%			10%			0
rw	50%	30%	10%	50%	30%	10%	50%	30%	10%	50%	30%	10%	50%	30%	10%	0
rfc	20%			20%			20%			20%			20%			0
RCR	RCR:Room Cavity Ratio						Wall Exitance Coefficients(WEC)									
0.0																
1.0	.388	.221	.070	.374	.213	.068	.347	.199	.064	.323	.186	.060	.301	.174	.056	
2.0	.334	.183	.056	.321	.177	.055	.297	.165	.051	.275	.154	.048	.255	.144	.045	
3.0	.296	.158	.047	.285	.152	.046	.263	.142	.043	.243	.133	.041	.224	.124	.038	
4.0	.266	.138	.041	.256	.134	.040	.236	.125	.037	.218	.117	.035	.201	.109	.033	
5.0	.242	.123	.036	.232	.119	.035	.214	.112	.033	.197	.104	.031	.182	.097	.029	
6.0	.221	.111	.032	.213	.107	.031	.196	.101	.029	.181	.094	.028	.166	.088	.026	
7.0	.204	.101	.029	.196	.098	.028	.181	.091	.026	.167	.086	.025	.154	.080	.023	
8.0	.189	.092	.026	.182	.090	.025	.168	.084	.024	.155	.078	.023	.143	.073	.021	
9.0	.176	.085	.024	.169	.083	.023	.157	.077	.022	.145	.072	.021	.133	.068	.020	
10.0	.165	.079	.022	.159	.077	.021	.147	.072	.020	.136	.067	.019	.125	.063	.018	

rcc	80%			70%			50%			30%			10%			0
rw	50%	30%	10%	50%	30%	10%	50%	30%	10%	50%	30%	10%	50%	30%	10%	0
rfc	20%			20%			20%			20%			20%			0
RCR	RCR:Room Cavity Ratio						Ceiling Cavity Exitance Coefficients(CCEC)									
0.0	.362	.362	.362	.310	.310	.310	.211	.211	.211	.121	.121	.121	.039	.039	.039	
1.0	.359	.329	.301	.307	.282	.259	.210	.194	.179	.121	.112	.104	.039	.036	.034	
2.0	.352	.306	.267	.302	.264	.231	.207	.182	.161	.119	.106	.094	.038	.034	.031	
3.0	.345	.290	.246	.296	.250	.213	.203	.174	.150	.117	.101	.088	.038	.033	.029	
4.0	.337	.277	.232	.289	.240	.201	.199	.167	.142	.115	.098	.084	.037	.032	.028	
5.0	.329	.268	.222	.283	.232	.193	.195	.162	.137	.113	.095	.081	.036	.031	.027	
6.0	.322	.260	.215	.277	.225	.187	.191	.158	.133	.111	.093	.079	.036	.030	.026	
7.0	.315	.253	.210	.271	.220	.183	.187	.154	.130	.109	.091	.077	.035	.030	.026	
8.0	.308	.248	.206	.265	.215	.180	.184	.151	.128	.107	.089	.076	.035	.029	.025	
9.0	.302	.243	.203	.260	.211	.177	.180	.148	.126	.105	.088	.075	.034	.029	.025	
10.0	.296	.239	.201	.255	.208	.175	.177	.146	.125	.103	.086	.074	.034	.028	.025	

C Range: 0 - 360DEG
 C Interval: 10.0DEG
 Test Speed: HIGH
 Temperature:25.3DEG
 Operators:LQL
 Test Date:28 September 2021

g Range: 0 - 180DEG
 g Interval: 2.0DEG
 Test System:EVERFINE GO-2000B_V1 SYSTEM V2.0.403
 Humidity:65.0%
 Test Distance:10.365m [K=1.0000]
 Remarks: SMD BK-CWL022-B0600A

UGR(Unified Glare Rating) Table

Test:U:230.56V I:0.0936A P:20.971W PF:0.9715 Freq:49.99Hz Lamp Flux:1980.59x1 lm										
NAME: Marilyn 18W switchable CCT					TYPE:			WEIGHT:		
SPEC.:					DIM.:			SERIAL No.:		
MFR.: CG LIGHTING					SUR.:			Shielding Angle:		
ceiling/cavity	0.7	0.7	0.5	0.5	0.3	0.7	0.7	0.5	0.5	0.3
walls	0.5	0.3	0.5	0.3	0.3	0.5	0.3	0.5	0.3	0.3
working plane	0.2	0.2	0.2	0.2	0.2	0.2	0.2	0.2	0.2	0.2
Room dimensions	Viewed crosswise					Viewed endwise				
x = 2H y = 2H	10.2	11.5	10.8	12.1	12.7	8.3	9.7	8.9	10.2	10.9
3H	11.5	12.7	12.1	13.3	14.0	9.8	11.0	10.4	11.6	12.3
4H	12.0	13.2	12.6	13.8	14.5	10.5	11.7	11.1	12.3	13.0
6H	12.3	13.4	13.0	14.1	14.8	11.2	12.3	11.9	13.0	13.7
8H	12.4	13.4	13.0	14.1	14.8	11.6	12.7	12.3	13.3	14.1
12H	12.4	13.4	13.1	14.1	14.8	12.1	13.1	12.8	13.8	14.5
4H 2H	10.3	11.5	10.9	12.1	12.8	8.8	10.0	9.4	10.6	11.3
3H	11.8	12.8	12.4	13.4	14.2	10.4	11.4	11.1	12.1	12.9
4H	12.3	13.3	13.0	13.9	14.7	11.3	12.2	12.0	12.9	13.7
6H	12.7	13.5	13.4	14.2	15.1	12.2	13.1	12.9	13.8	14.6
8H	12.8	13.6	13.5	14.3	15.1	12.7	13.5	13.4	14.2	15.1
12H	12.8	13.6	13.6	14.3	15.2	13.3	14.0	14.0	14.8	15.6
8H 4H	12.4	13.2	13.1	13.9	14.7	11.5	12.3	12.2	13.0	13.8
6H	12.9	13.6	13.6	14.3	15.2	12.6	13.3	13.4	14.0	14.9
8H	13.1	13.7	13.8	14.4	15.3	13.3	13.9	14.1	14.7	15.6
12H	13.2	13.7	13.9	14.5	15.4	14.1	14.6	14.9	15.4	16.3
12H 4H	12.4	13.1	13.1	13.9	14.7	11.5	12.2	12.2	12.9	13.8
6H	13.0	13.6	13.7	14.3	15.2	12.7	13.3	13.5	14.0	14.9
8H	13.2	13.7	14.0	14.5	15.4	13.4	14.0	14.2	14.7	15.7
Variations with the observer position at spacings:										
S = 1.0H	+ 0.3 / - 0.3					+ 0.2 / - 0.2				
1.5H	+ 0.7 / - 0.6					+ 0.1 / - 0.3				
2.0H	+ 1.3 / - 1.1					+ 0.1 / - 0.2				

CIE Pub.117, 1981 lm Total Lamp Luminous Flux Correct (8log(F/F0) = 2.4)

C Range: 0 - 360DEG
 C Interval: 10.0DEG
 Test Speed: HIGH
 Temperature:25.3DEG
 Operators:LQL
 Test Date:28 September 2021

g Range: 0 - 180DEG
 g Interval: 2.0DEG
 Test System:EVERFINE GO-2000B_V1 SYSTEM V2.0.403
 Humidity:65.0%
 Test Distance:10.365m [K=1.0000]
 Remarks: SMD BK-CWL022-B0600A

UTILIZATION FACTORS TABLE

Test:U:230.56V I:0.0936A P:20.971W PF:0.9715 Freq:49.99Hz Lamp Flux:1980.59x1 lm		
NAME: Marilyn 18W switchable CCT	TYPE:	WEIGHT:
SPEC.:	DIM.:	SERIAL No.:
MFR.: CG LIGHTING	SUR.:	Shielding Angle:

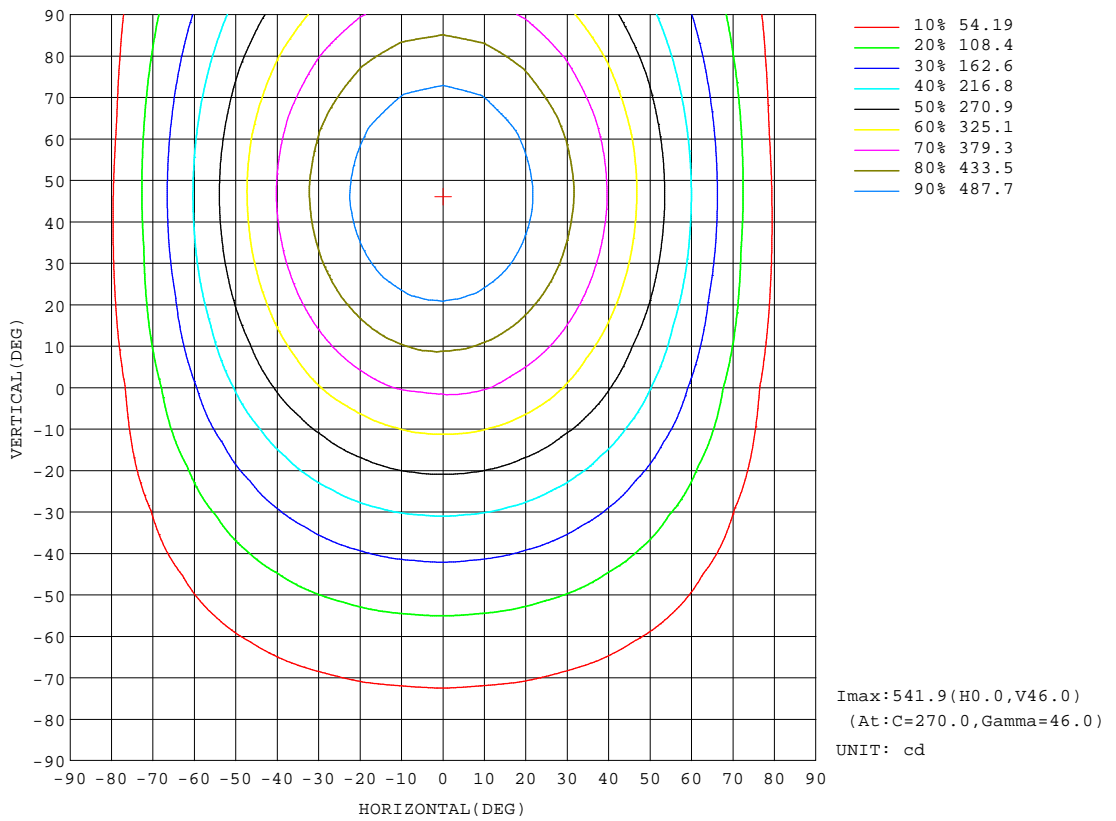
REFLECTANCE										
Ceiling	0.8	0.8	0.8	0.7	0.7	0.7	0.5	0.5	0.5	0
Walls	0.7	0.5	0.3	0.7	0.5	0.3	0.7	0.5	0.3	0
Working plane	0.2	0.2	0.2	0.2	0.2	0.2	0.2	0.2	0.2	0
ROOM INDEX	UTILIZATION FACTORS(PERCENT) $k(RI) \times RCR = 5$									
k = 0.60	46	34	26	45	33	26	43	32	26	19
0.80	55	42	34	53	41	34	50	40	33	24
1.00	63	50	41	61	49	41	57	49	39	30
1.25	70	57	48	67	55	47	62	52	45	35
1.50	75	62	54	72	61	52	67	57	50	39
2.00	82	71	62	79	69	61	73	64	57	45
2.50	87	76	68	83	74	66	76	68	62	49
3.00	91	81	73	87	78	71	79	72	67	52
4.00	95	87	80	91	84	78	83	77	72	57
5.00	98	91	85	94	88	82	86	81	76	60
ROOM INDEX	UF(total)									Direct
According to DIN EN 13032-2 2004			Suspended				SHRNOM = 1.25			

C Range: 0 - 360DEG
 C Interval: 10.0DEG
 Test Speed: HIGH
 Temperature:25.3DEG
 Operators:LQL
 Test Date:28 September 2021

g Range: 0 - 180DEG
 Interval: 2.0DEG
 Test System:EVERFINE GO-2000B_V1 SYSTEM V2.0.403
 Humidity:65.0%
 Test Distance:10.365m [K=1.0000]
 Remarks: SMD BK-CWL022-B0600A

ISOCANDELA DIAGRAM

Test:U:230.56V I:0.0936A P:20.971W PF:0.9715 Freq:49.99Hz Lamp Flux:1980.59x1 lm		
NAME: Marilyn 18W switchable CCT	TYPE:	WEIGHT:
SPEC.:	DIM.:	SERIAL No.:
MFR.: CG LIGHTING	SUR.:	Shielding Angle:

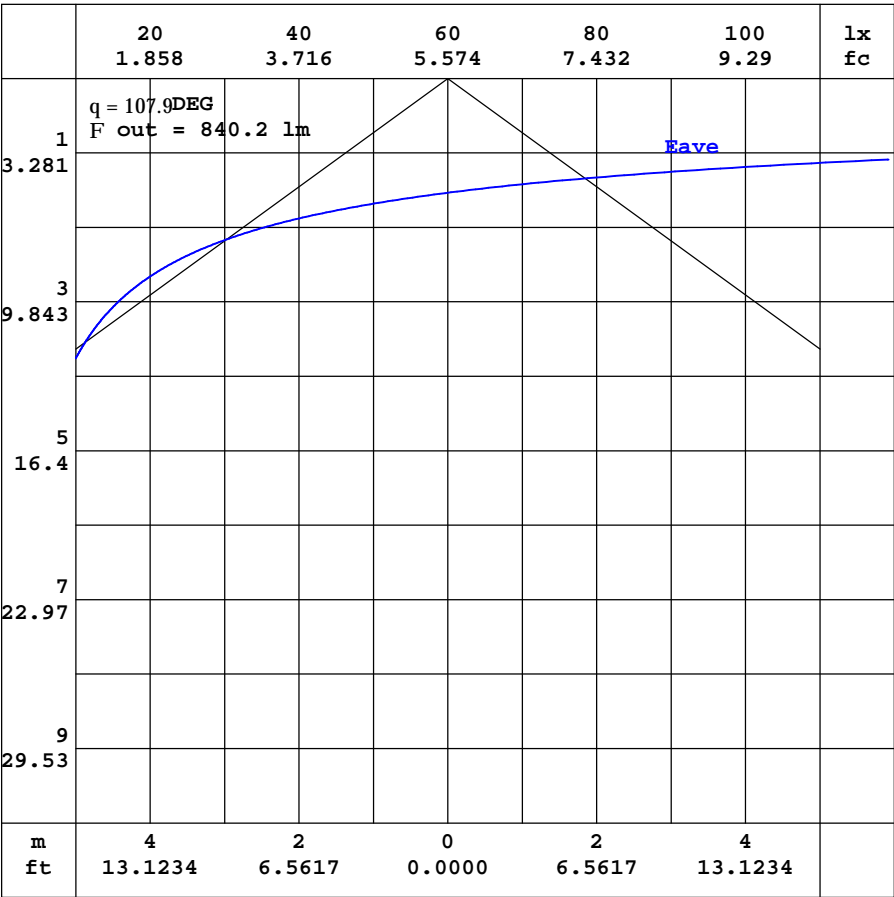


C Range: 0 - 360DEG
 C Interval: 10.0DEG
 Test Speed: HIGH
 Temperature: 25.3DEG
 Operators: LQL
 Test Date: 28 September 2021

Page Range: 0 - 180DEG
 Interval: 2.0DEG
 Test System: EVERFINE GO-2000B_V1 SYSTEM V2.0.403
 Humidity: 65.0%
 Test Distance: 10.365m [K=1.0000]
 Remarks: SMD BK-CWL022-B0600A

AAI CURVES

Test:U:230.56V I:0.0936A P:20.971W PF:0.9715 Freq:49.99Hz Lamp Flux:1980.59x1 lm		
NAME: Marilyn 18W switchable CCT	TYPE:	WEIGHT:
SPEC.:	DIM.:	SERIAL No.:
MFR.: CG LIGHTING	SUR.:	Shielding Angle:



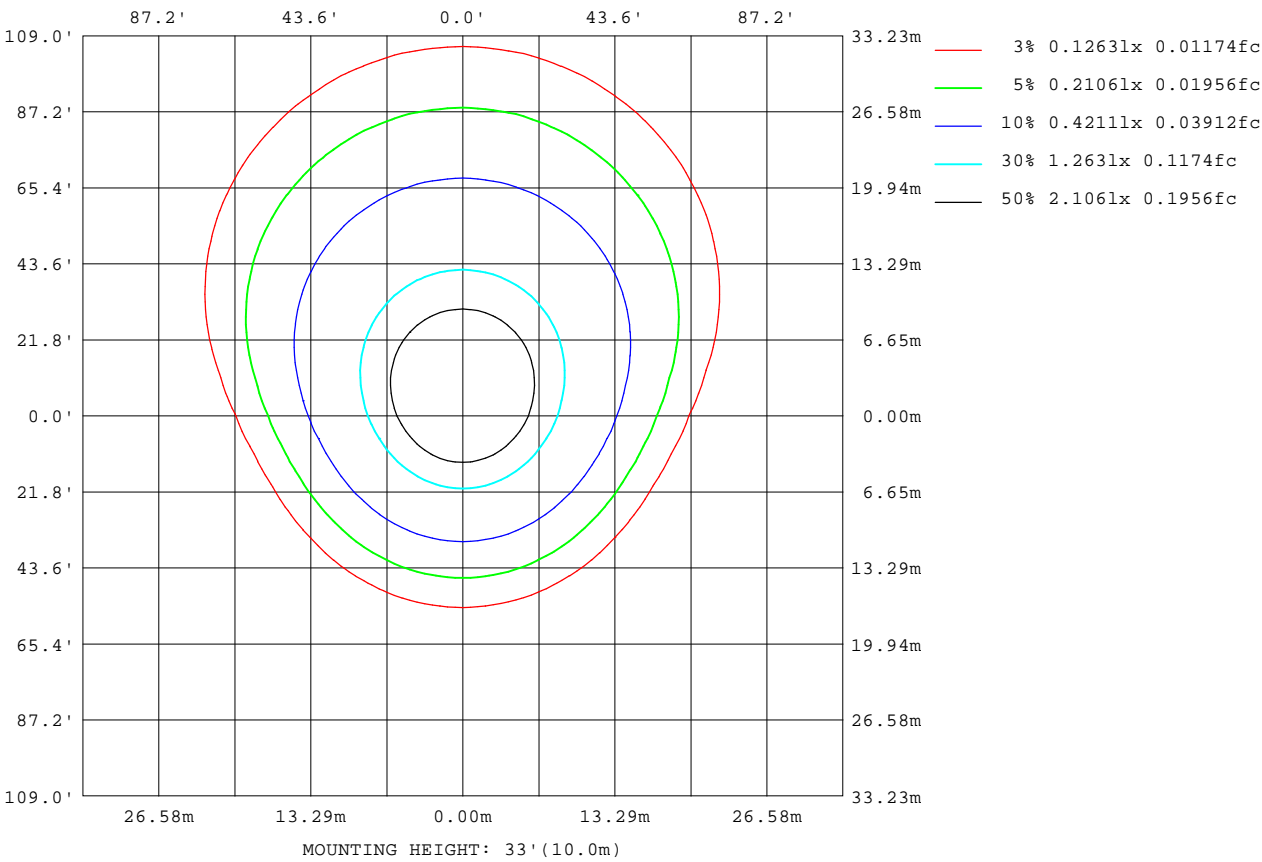
Note:The Curves indicate the illuminated area and the average illumination when the luminaire is at different distance.

C Range: 0 - 360DEG
 C Interval: 10.0DEG
 Test Speed: HIGH
 Temperature:25.3DEG
 Operators:LQL
 Test Date:28 September 2021

Range: 0 - 180DEG
 Interval: 2.0DEG
 Test System:EVERFINE GO-2000B_V1 SYSTEM V2.0.403
 Humidity:65.0%
 Test Distance:10.365m [K=1.0000]
 Remarks: SMD BK-CWL022-B0600A

ISOLUX DIAGRAM

Test:U:230.56V I:0.0936A P:20.971W PF:0.9715 Freq:49.99Hz Lamp Flux:1980.59x1 lm		
NAME: Marilyn 18W switchable CCT	TYPE:	WEIGHT:
SPEC.:	DIM.:	SERIAL No.:
MFR.: CG LIGHTING	SUR.:	Shielding Angle:



C Range: 0 - 360DEG
 C Interval: 10.0DEG
 Test Speed: HIGH
 Temperature:25.3DEG
 Operators:LQL
 Test Date:28 September 2021

Range: 0 - 180DEG
 Interval: 2.0DEG
 Test System:EVERFINE GO-2000B_V1 SYSTEM V2.0.403
 Humidity:65.0%
 Test Distance:10.365m [K=1.0000]
 Remarks: SMD BK-CWL022-B0600A

LED Avg.L Report

Test:U:230.56V I:0.0936A P:20.971W PF:0.9715 Freq:49.99Hz Lamp Flux:1980.59x1 lm		
NAME: Marilyn 18W switchable CCT	TYPE:	WEIGHT:
SPEC.:	DIM.:	SERIAL No.:
MFR.: CG LIGHTING	SUR.:	Shielding Angle:

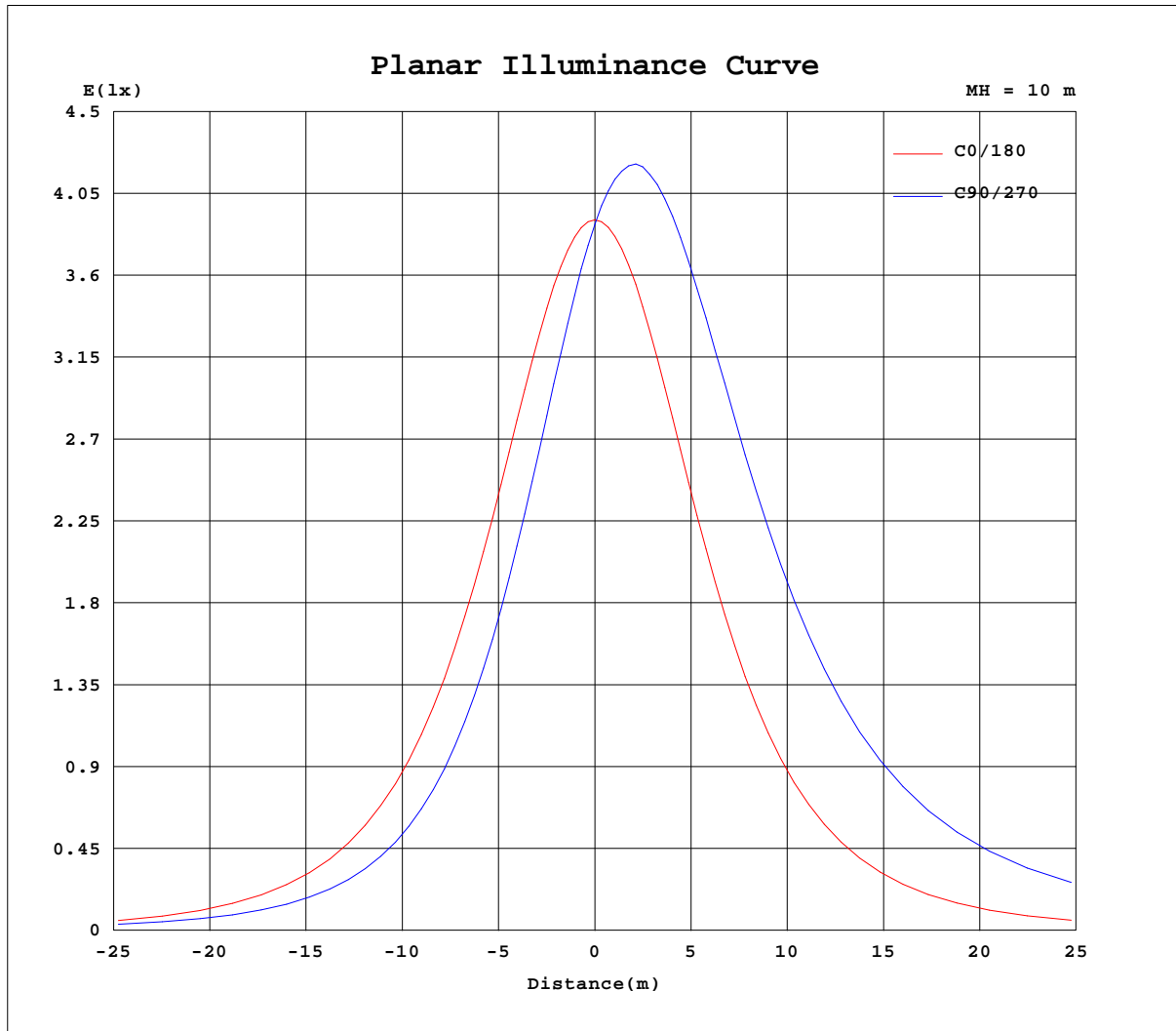
AvgL	cd/m2
L_0~180(65)av	2989
L_0~180(75)av	2450
L_0~180(85)av	1410
L_90~270(65)av	6973
L_90~270(75)av	10193
L_90~270(85)av	26561
L_45(65)av	5308
L_45(75)av	7180
L_45(85)av	17362

Standard: GB/T 29293-2012

C Range: 0 - 360DEG
 C Interval: 10.0DEG
 Test Speed: HIGH
 Temperature:25.3DEG
 Operators:LQL
 Test Date:28 September 2021

g Range: 0 - 180DEG
 g Interval: 2.0DEG
 Test System:EVERFINE GO-2000B_V1 SYSTEM V2.0.403
 Humidity:65.0%
 Test Distance:10.365m [K=1.0000]
 Remarks: SMD BK-CWL022-B0600A

Planar Illuminance Curve



C Range: 0 - 360DEG
 C Interval: 10.0DEG
 Test Speed: HIGH
 Temperature: 25.3DEG
 Operators: LQL
 Test Date: 28 September 2021

Page Range: 0 - 180DEG
 Interval: 2.0DEG
 Test System: EVERFINE GO-2000B_V1 SYSTEM V2.0.403
 Humidity: 65.0%
 Test Distance: 10.365m [K=1.0000]
 Remarks: SMD BK-CWL022-B0600A

LUMINOUS DISTRIBUTION INTENSITY DATA

Test:U:230.56V I:0.0936A P:20.971W PF:0.9715 Freq:49.99Hz Lamp Flux:1980.59x1 lm		
NAME: Marilyn 18W switchable CCT	TYPE:	WEIGHT:
SPEC.:	DIM.:	SERIAL No.:
MFR.: CG LIGHTING	SUR.:	Shielding Angle:

Table--1

UNIT: cd

C(DEG) g (DEG)	0	10	20	30	40	50	60	70	80	90	100	110	120	130	140	150	160	170	180	
0	391	390	390	390	389	389	389	388	389	388	388	388	388	388	388	388	388	388	388	391
5	389	385	381	378	374	372	370	368	367	366	367	367	369	371	373	376	379	382	389	
10	382	373	363	356	349	343	339	335	333	332	333	335	338	343	348	355	362	371	383	
15	374	361	350	339	330	323	318	313	311	310	311	313	317	323	329	339	348	360	375	
20	358	341	325	311	300	292	285	280	277	276	277	280	285	292	300	311	324	340	360	
25	345	325	306	292	279	270	263	258	255	254	255	258	263	270	279	292	306	324	347	
30	321	297	276	260	247	238	231	226	222	222	223	226	231	238	248	261	276	297	323	
35	303	277	255	239	225	216	209	205	202	202	202	205	209	217	226	239	256	277	305	
40	273	245	222	206	193	185	178	175	173	172	173	175	179	185	194	206	223	245	275	
45	252	223	199	184	172	165	159	156	154	154	154	157	160	165	172	185	200	223	254	
50	218	188	165	151	141	136	132	130	128	128	128	130	132	137	142	152	166	188	220	
55	194	164	142	130	122	118	114	113	112	112	112	114	115	119	123	131	143	164	196	
60	157	128	109	100	94.4	92.6	90.9	91.1	90.4	91.0	90.5	91.4	91.5	93.3	95.3	101	110	129	159	
65	132	104	88.0	81.6	77.9	77.5	76.7	77.6	77.2	78.0	77.5	77.9	77.4	78.2	78.7	82.6	88.9	105	134	
70	93.7	69.7	59.1	56.7	55.9	57.3	58.1	59.6	59.9	60.6	60.1	59.9	58.6	57.8	56.6	57.4	59.9	70.5	95.3	
75	68.7	48.8	42.3	42.4	43.4	45.9	47.4	49.3	49.8	50.6	50.0	49.6	47.8	46.4	44.1	43.2	43.1	49.6	70.3	
80	34.2	22.9	22.5	25.5	28.3	31.7	33.9	36.1	37.0	37.7	37.2	36.3	34.3	32.0	28.8	25.9	23.0	23.5	35.5	
85	15.6	11.1	13.4	17.3	20.6	24.3	26.7	29.0	29.9	30.7	30.0	29.2	26.9	24.5	20.9	17.6	13.7	11.4	16.6	
90	2.23	3.59	6.16	9.54	12.7	15.9	18.4	20.5	21.5	22.1	21.6	20.6	18.6	16.1	12.9	9.60	6.08	3.37	2.48	
95	2.56	3.00	4.52	6.86	9.51	12.3	14.4	16.3	17.3	17.8	17.4	16.4	14.5	12.4	9.56	6.80	4.30	2.63	2.77	
100	3.44	3.25	4.04	5.33	7.08	8.95	10.6	12.0	12.7	13.1	12.8	12.0	10.6	8.95	7.03	5.18	3.80	2.87	3.61	
105	4.23	3.49	4.06	5.07	6.50	7.87	9.22	10.2	10.8	11.1	10.9	10.2	9.18	7.82	6.41	4.93	3.82	3.14	4.47	
110	5.71	3.86	4.43	5.20	6.09	7.16	8.19	8.80	9.27	9.40	9.31	8.81	8.12	7.17	6.03	5.02	4.22	3.56	5.93	
115	6.78	4.11	4.66	5.41	6.05	6.88	7.81	8.33	8.74	8.82	8.77	8.36	7.74	6.81	5.93	5.27	4.48	3.84	7.02	
120	8.53	4.50	5.02	5.72	6.35	6.97	7.43	7.74	8.07	8.14	8.10	7.72	7.33	6.87	6.20	5.58	4.85	4.25	8.81	
125	9.62	4.76	5.27	5.94	6.51	7.10	7.44	7.77	7.89	7.97	7.91	7.75	7.39	6.98	6.34	5.79	5.08	4.52	9.88	
130	10.4	5.37	5.61	6.23	6.73	7.30	7.62	7.88	7.91	8.03	7.93	7.83	7.53	7.12	6.59	6.07	5.41	4.94	10.6	
135	10.7	6.57	5.82	6.43	6.99	7.38	7.65	7.89	7.93	8.03	7.94	7.89	7.59	7.22	6.68	6.23	5.63	6.07	11.0	
140	11.1	8.26	6.16	6.74	7.09	7.51	7.69	7.86	7.93	7.97	7.99	7.84	7.61	7.29	6.85	6.43	5.89	7.69	11.4	
145	11.3	9.41	6.40	6.90	7.19	7.58	7.72	7.84	7.93	7.91	7.97	7.76	7.59	7.33	6.94	6.57	6.06	8.78	11.6	
150	12.1	10.7	7.81	7.12	7.45	7.68	7.76	7.78	7.85	7.78	7.83	7.66	7.59	7.33	7.00	6.72	6.82	10.1	12.1	
155	12.6	11.4	10.0	7.27	7.54	7.75	7.78	7.73	7.77	7.69	7.75	7.63	7.57	7.33	7.06	6.82	8.31	10.7	12.6	
160	14.6	13.4	13.1	10.1	7.66	7.85	7.80	7.66	7.64	7.55	7.62	7.54	7.52	7.33	7.12	8.40	11.2	12.7	14.7	
165	16.3	15.0	14.6	13.4	10.4	7.89	7.80	7.58	7.54	7.46	7.55	7.48	7.45	7.34	8.75	11.1	13.3	14.3	16.3	
170	18.7	17.7	16.9	16.8	16.3	14.6	13.1	11.7	10.9	8.98	9.13	9.43	10.8	12.4	14.2	15.2	15.9	16.8	18.6	
175	20.0	19.3	18.6	18.1	17.7	17.5	16.9	16.4	13.9	11.7	11.7	13.2	15.0	16.0	16.6	17.3	17.9	18.6	19.9	
180	20.1	20.1	20.0	20.1	20.0	19.9	18.9	16.9	13.2	13.2	18.4	19.8	19.7	19.8	19.7	19.7	19.6	19.7	20.1	

C Range: 0 - 360DEG
 C Interval: 10.0DEG
 Test Speed: HIGH
 Temperature:25.3DEG
 Operators:LQL
 Test Date:28 September 2021

g Range: 0 - 180DEG
 Interval: 2.0DEG
 Test System:EVERFINE GO-2000B_V1 SYSTEM V2.0.403
 Humidity:65.0%
 Test Distance:10.365m [K=1.0000]
 Remarks: SMD BK-CWL022-B0600A

LUMINOUS DISTRIBUTION INTENSITY DATA

Test:U:230.56V I:0.0936A P:20.971W PF:0.9715 Freq:49.99Hz Lamp Flux:1980.59x1 lm		
NAME: Marilyn 18W switchable CCT	TYPE:	WEIGHT:
SPEC.:	DIM.:	SERIAL No.:
MFR.: CG LIGHTING	SUR.:	Shielding Angle:

Table--2

UNIT: cd

C(DEG) g (DEG)	190	200	210	220	230	240	250	260	270	280	290	300	310	320	330	340	350		
0	390	390	390	389	389	389	388	389	388	388	388	388	388	388	388	388	388		
5	392	396	400	402	405	407	408	409	409	409	408	406	403	400	397	394	390		
10	392	401	410	418	426	433	436	440	440	439	435	431	424	416	407	398	388		
15	388	401	414	426	437	447	454	458	459	457	453	445	435	424	411	398	384		
20	378	397	416	434	452	466	477	482	485	481	475	464	450	431	413	393	374		
25	368	391	414	437	459	476	489	497	500	496	488	474	456	434	411	387	364		
30	349	378	408	437	465	488	505	515	518	514	503	485	461	433	404	374	345		
35	334	367	401	434	466	492	512	524	528	523	510	489	463	431	397	363	330		
40	308	347	387	427	464	495	519	533	537	532	516	492	461	423	382	343	304		
45	289	331	375	419	459	494	520	536	541	534	517	490	456	415	371	327	285		
50	258	305	354	404	449	488	517	535	541	534	515	484	445	399	350	302	255		
55	236	287	339	391	439	481	512	532	537	530	509	477	435	387	335	283	233		
60	202	256	313	370	421	466	499	521	528	519	497	462	417	365	309	253	198		
65	178	235	294	353	407	453	488	511	517	509	485	450	402	349	291	232	175		
70	140	202	265	326	382	430	467	492	498	490	464	426	378	322	261	199	138		
75	116	179	244	307	364	413	452	476	483	475	449	409	360	303	240	176	113		
80	79.7	146	212	278	336	386	425	451	458	449	423	383	332	274	209	143	78.2		
85	58.5	125	192	258	317	367	406	431	439	429	404	364	313	255	190	123	57.5		
90	35.6	98.9	165	230	288	338	376	400	408	399	374	335	285	227	163	97.6	35.3		
95	28.1	85.8	149	213	269	318	355	379	387	378	353	315	266	210	148	84.9	28.1		
100	24.2	72.2	130	189	242	288	324	346	354	345	322	286	239	186	128	71.4	24.1		
105	23.7	66.0	119	174	224	269	303	324	331	323	301	266	222	172	117	65.3	23.6		
110	24.0	59.4	105	154	200	240	271	290	297	290	269	238	197	152	104	59.0	23.9		
115	24.2	56.2	96.8	141	184	222	250	269	274	268	249	220	182	140	96.3	55.8	24.1		
120	23.8	52.5	87.0	125	161	195	220	236	241	235	218	193	160	124	86.5	52.2	23.5		
125	22.9	50.5	81.2	115	147	177	200	215	219	214	199	177	147	114	80.6	50.1	22.5		
130	21.0	47.6	73.4	100	129	153	173	185	188	185	172	153	128	101	72.7	47.0	20.5		
135	19.0	43.2	67.8	91.2	116	138	155	166	169	166	154	138	116	92.4	67.9	44.3	20.0		
140	17.4	34.6	55.7	76.2	97.4	117	129	140	142	139	130	117	99.5	80.6	60.8	39.1	20.5		
145	16.4	28.9	47.5	66.0	83.8	102	115	123	125	123	115	104	89.3	73.4	55.3	35.0	20.8		
150	15.1	20.6	35.6	50.5	65.0	80.3	94.0	101	102	100	94.3	86.1	75.1	61.7	45.8	28.7	21.1		
155	14.7	17.6	27.9	40.5	52.7	65.4	78.9	86.7	87.7	86.4	81.9	75.0	65.0	53.3	39.1	26.8	21.2		
160	16.3	18.1	19.4	26.3	34.8	44.0	54.2	66.3	67.2	66.2	62.4	56.8	48.9	39.5	29.7	25.2	20.7		
165	17.8	19.4	20.3	20.5	24.1	30.1	37.8	48.8	52.5	51.6	48.7	43.9	37.5	31.0	27.5	24.1	20.3		
170	19.5	20.6	21.3	21.4	20.2	18.0	18.4	22.3	31.4	31.2	30.4	29.3	27.8	26.1	24.3	22.4	20.3		
175	20.4	21.0	21.3	21.3	20.5	18.5	16.0	16.0	25.7	26.0	25.6	24.9	24.3	23.3	22.4	21.3	20.4		
180	20.1	20.1	20.1	20.1	20.0	18.9	16.9	13.3	13.3	18.6	19.9	19.8	19.9	19.8	19.8	19.7	19.7		

C Range: 0 - 360DEG
 C Interval: 10.0DEG
 Test Speed: HIGH
 Temperature:25.3DEG
 Operators:LQL
 Test Date:28 September 2021

g Range: 0 - 180DEG
 g Interval: 2.0DEG
 Test System:EVERFINE GO-2000B_V1 SYSTEM V2.0.403
 Humidity:65.0%
 Test Distance:10.365m [K=1.0000]
 Remarks: SMD BK-CWL022-B0600A