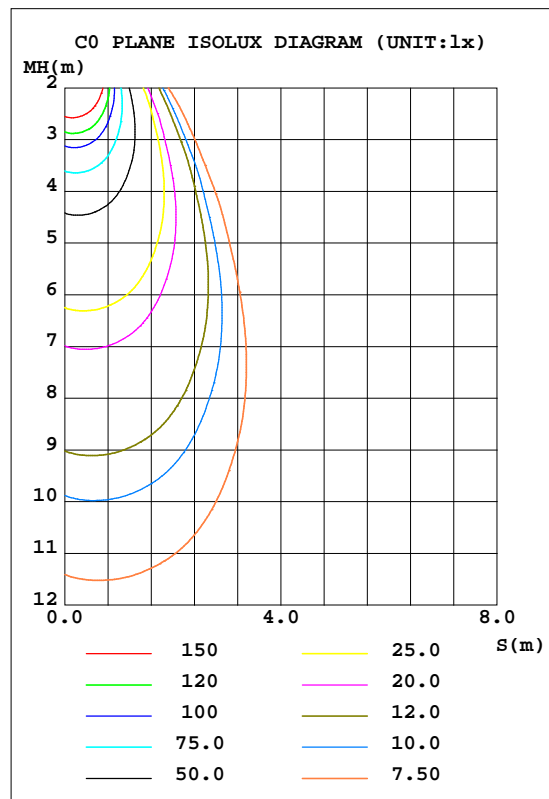
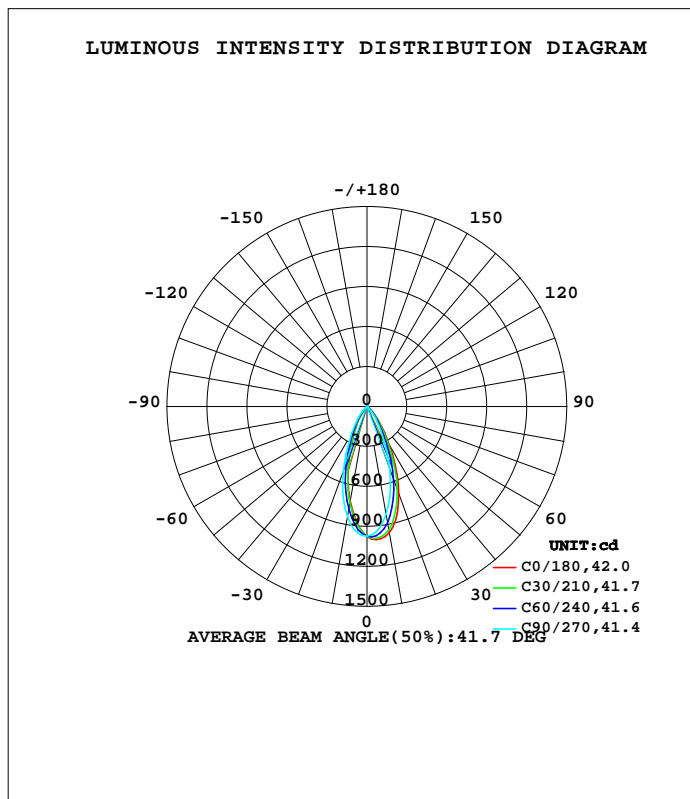


LUMINAIRE PHOTOMETRIC TEST REPORT

Test:U:230.51V I:0.0444A P:9.7274W PF:0.9502 Freq:49.99Hz Lamp Flux:563.154x1 lm		
NAME: New milan 7.5W LED spot	TYPE:	WEIGHT:
SPEC.:	DIM.:	SERIAL No.:
MFR.: CG LIGHTING	SUR.:	Shielding Angle:

DATA OF LAMP		PHOTOMETRIC DATA				Eff: 57.89 lm/W
MODEL	1772AD-00	I _{max} (cd)	1001	S/MH(C0/180)	0.55	
NOMINAL POWER(W)		LOR(%)	100.0	S/MH(C90/270)	0.68	
RATED VOLTAGE(V)	230	TOTAL FLUX(lm)	563.15	h UP, DN(C0-180)	0.0,50.0	
NOMINAL FLUX(lm)	563.154	CIE CLASS	DIRECT	h UP, DN(C180-360)	0.0,50.0	
LAMPS INSIDE	1	h up(%)	0.0	CIBSE SHR NOM	0.50	
TEST VOLTAGE(V)	230	h down(%)	100.0	CIBSE SHR MAX	0.70	



C Range: 0 - 360DEG
 C Interval: 10.0DEG
 Test Speed: HIGH
 Temperature:25.3DEG
 Operators:LQL
 Test Date:08 December 2021

Range: 0 - 90DEG
 Interval: 2.0DEG
 Test System:EVERFINE GO-2000B_V1 SYSTEM V2.0.403
 Humidity:65.0%
 Test Distance:10.365m [K=1.0000]
 Remarks: Zigen BGE ACTEC AS-10-500TF

ZONAL FLUX DIAGRAM

ZONAL FLUX DIAGRAM:

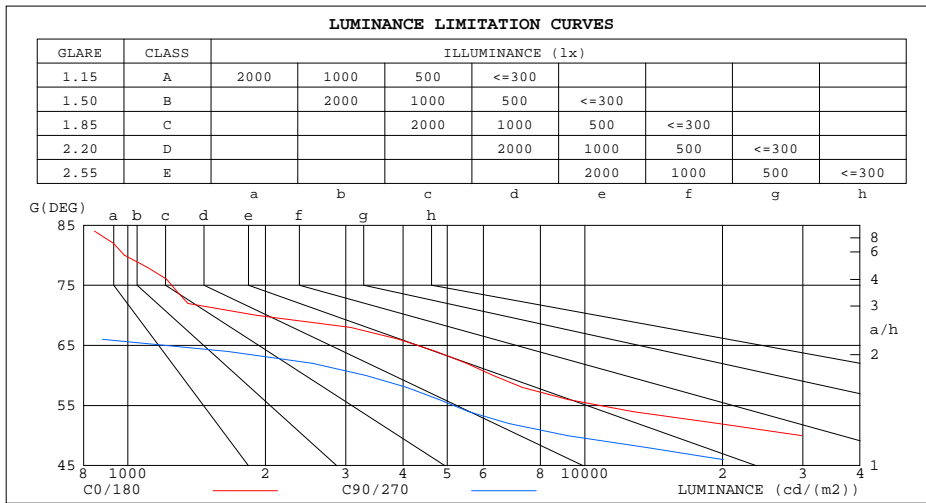
g	C0	C45	C90	C135	C180	C225	C270	C315	g	F zone	F total	%lum,lamp
10	962.9	918.0	823.6	743.5	724.6	758.3	841.9	930.4	0- 10	86.25	86.25	15.3,15.3
20	701.7	629.4	498.9	399.6	376.0	420.9	522.8	653.3	10- 20	190.6	276.9	49.2,49.2
30	343.7	287.8	208.7	160.1	151.7	172.1	226.6	303.7	20- 30	166.5	443.4	78.7,78.7
40	124.8	105.2	64.01	35.11	28.40	39.79	71.89	109.1	30- 40	87.96	531.3	94.4,94.4
50	24.10	15.72	7.403	4.343	3.551	4.118	7.938	17.83	40- 50	26.12	557.5	99,99
60	3.958	3.131	2.085	0.9994	0.5448	1.076	2.222	3.300	50- 60	4.333	561.8	99.8,99.8
70	0.8220	0.4583	0.2948	0.1845	0.0956	0.2029	0.3912	0.5645	60- 70	1.096	562.9	100,100
80	0.2143	0.1107	0.0295	0.0480	0.0221	0.0369	0.0960	0.1401	70- 80	0.2101	563.1	100,100
90	0.0516	0.0479	0.0369	0.0369	0.0221	0.0258	0.0221	0.0332	80- 90	0.0547	563.2	100,100
100									90-100			
110									100-110			
120									110-120			
130									120-130			
140									130-140			
150									140-150			
160									150-160			
170									160-170			
180									170-180			
DEG	LUMINOUS INTENSITY:cd									UNIT:lm		

C Range: 0 - 360DEG
 C Interval: 10.0DEG
 Test Speed: HIGH
 Temperature:25.3DEG
 Operators:LQL
 Test Date:08 December 2021

g Range: 0 - 90DEG
 Interval: 2.0DEG
 Test System:EVERFINE GO-2000B_V1 SYSTEM V2.0.403
 Humidity:65.0%
 Test Distance:10.365m [K=1.0000]
 Remarks: Zigen BGE ACTEC AS-10-500TF

LUMINANCE LIMITATION CURVES

Test:U:230.51V I:0.0444A P:9.7274W PF:0.9502 Freq:49.99Hz Lamp Flux:563.154x1 lm		
NAME: New milan 7.5W LED spot	TYPE:	WEIGHT:
SPEC.:	DIM.:	SERIAL No.:
MFR.: CG LIGHTING	SUR.:	Shielding Angle:



LUMINANCE cd/(m2)		
G(DEG)	C0/180	C90/270
85	1014	270
80	983	135
75	1363	453
70	1914	686
65	4899	1720
60	6303	3320
55	13070	5709
50	29849	9170
45	86827	32548

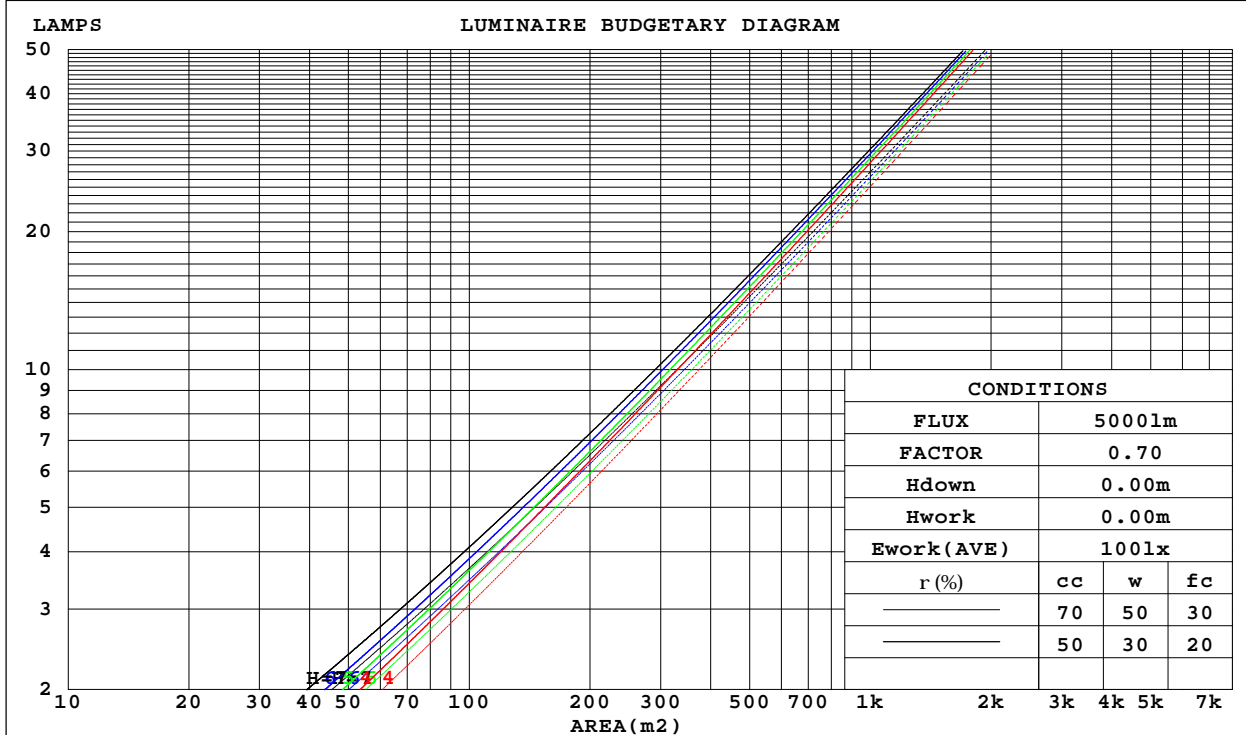
C Range: 0 - 360DEG
 C Interval: 10.0DEG
 Test Speed: HIGH
 Temperature:25.3DEG
 Operators:LQL
 Test Date:08 December 2021

G Range: 0 - 90DEG
 G Interval: 2.0DEG
 Test System:EVERFINE GO-2000B_V1 SYSTEM V2.0.403
 Humidity:65.0%
 Test Distance:10.365m [K=1.0000]
 Remarks: Zigen BGE ACTEC AS-10-500TF

CU AND LUMINAIRE BUDGETARY ESTIMATE DIAGRAM

Test:U:230.51V I:0.0444A P:9.7274W PF:0.9502 Freq:49.99Hz Lamp Flux:563.154x1 lm		
NAME: New milan 7.5W LED spot	TYPE:	WEIGHT:
SPEC.:	DIM.:	SERIAL No.:
MFR.: CG LIGHTING	SUR.:	Shielding Angle:

r _{cc}	80%			70%			50%			30%			10%			0
r _w	50%	30%	10%	50%	30%	10%	50%	30%	10%	50%	30%	10%	50%	30%	10%	0
r _{fc}	20%			20%			20%			20%			20%			0
RCR	RCR:Room Cavity Ratio						Coefficients of Utilization(CU)									
0.0	1.19	1.19	1.19	1.16	1.16	1.16	1.11	1.11	1.11	1.06	1.06	1.06	1.02	1.02	1.02	.00
1.0	1.11	1.09	1.07	1.09	1.07	1.05	1.05	1.04	1.02	1.01	1.00	.99	.98	.97	.96	.94
2.0	1.04	1.01	.97	1.03	.99	.96	.99	.97	.94	.96	.94	.92	.94	.92	.90	.89
3.0	.98	.93	.90	.97	.92	.89	.94	.90	.88	.92	.89	.86	.89	.87	.85	.83
4.0	.92	.87	.83	.91	.86	.83	.89	.85	.82	.87	.84	.81	.85	.82	.80	.78
5.0	.87	.82	.78	.86	.81	.77	.84	.80	.77	.83	.79	.76	.81	.78	.75	.74
6.0	.82	.77	.73	.82	.76	.73	.80	.76	.72	.79	.75	.72	.77	.74	.71	.70
7.0	.78	.72	.69	.77	.72	.68	.76	.71	.68	.75	.71	.68	.74	.70	.67	.66
8.0	.74	.69	.65	.74	.68	.65	.72	.68	.64	.71	.67	.64	.71	.67	.64	.63
9.0	.70	.65	.61	.70	.65	.61	.69	.64	.61	.68	.64	.61	.67	.64	.61	.59
10.0	.67	.62	.58	.67	.62	.58	.66	.61	.58	.65	.61	.58	.65	.61	.58	.57



C Range: 0 - 360DEG
 C Interval: 10.0DEG
 Test Speed: HIGH
 Temperature:25.3DEG
 Operators:LQL
 Test Date:08 December 2021

Range: 0 - 90DEG
 Interval: 2.0DEG
 Test System:EVERFINE GO-2000B_V1 SYSTEM V2.0.403
 Humidity:65.0%
 Test Distance:10.365m [K=1.0000]
 Remarks: Zigen BGE ACTEC AS-10-500TF

WEC AND CCEC

Test:U:230.51V I:0.0444A P:9.7274W PF:0.9502 Freq:49.99Hz Lamp Flux:563.154x1 lm		
NAME: New milan 7.5W LED spot	TYPE:	WEIGHT:
SPEC.:	DIM.:	SERIAL No.:
MFR.: CG LIGHTING	SUR.:	Shielding Angle:

rcc	80%			70%			50%			30%			10%			0
rw	50%	30%	10%	50%	30%	10%	50%	30%	10%	50%	30%	10%	50%	30%	10%	0
rfc	20%			20%			20%			20%			20%			0
RCR	RCR:Room Cavity Ratio						Wall Exitance Coefficients(WEC)									
0.0																
1.0	.167	.095	.030	.160	.091	.029	.148	.085	.027	.136	.078	.025	.125	.073	.023	
2.0	.159	.087	.027	.153	.084	.026	.143	.079	.025	.133	.075	.023	.124	.070	.022	
3.0	.151	.080	.024	.146	.078	.024	.137	.074	.023	.129	.071	.022	.121	.067	.021	
4.0	.144	.075	.022	.140	.073	.022	.132	.070	.021	.125	.067	.020	.118	.064	.020	
5.0	.137	.070	.020	.133	.068	.020	.127	.066	.019	.120	.064	.019	.115	.061	.018	
6.0	.131	.065	.019	.127	.064	.019	.122	.062	.018	.116	.060	.018	.111	.058	.017	
7.0	.125	.062	.017	.122	.061	.017	.117	.059	.017	.112	.057	.017	.108	.056	.016	
8.0	.119	.058	.016	.117	.058	.016	.112	.056	.016	.108	.055	.016	.104	.053	.016	
9.0	.115	.055	.015	.112	.055	.015	.108	.054	.015	.104	.052	.015	.101	.051	.015	
10.0	.110	.053	.015	.108	.052	.015	.104	.051	.014	.101	.050	.014	.098	.049	.014	

rcc	80%			70%			50%			30%			10%			0
rw	50%	30%	10%	50%	30%	10%	50%	30%	10%	50%	30%	10%	50%	30%	10%	0
rfc	20%			20%			20%			20%			20%			0
RCR	RCR:Room Cavity Ratio						Ceiling Cavity Exitance Coefficients(CCEC)									
0.0	.190	.190	.190	.163	.163	.163	.111	.111	.111	.064	.064	.064	.020	.020	.020	
1.0	.170	.157	.146	.146	.135	.125	.100	.093	.087	.057	.054	.050	.018	.017	.016	
2.0	.155	.133	.114	.132	.114	.099	.091	.079	.069	.052	.046	.040	.017	.015	.013	
3.0	.142	.113	.091	.121	.098	.079	.083	.068	.055	.048	.040	.033	.015	.013	.011	
4.0	.131	.099	.074	.112	.085	.064	.077	.059	.045	.045	.035	.027	.014	.011	.009	
5.0	.122	.087	.061	.105	.075	.053	.072	.053	.038	.042	.031	.022	.013	.010	.007	
6.0	.114	.077	.051	.098	.067	.045	.068	.047	.031	.039	.028	.019	.013	.009	.006	
7.0	.107	.070	.043	.092	.060	.038	.064	.042	.027	.037	.025	.016	.012	.008	.005	
8.0	.102	.063	.037	.087	.055	.032	.061	.039	.023	.035	.023	.014	.011	.007	.005	
9.0	.096	.058	.032	.083	.050	.028	.058	.035	.020	.034	.021	.012	.011	.007	.004	
10.0	.092	.054	.028	.079	.047	.025	.055	.033	.018	.032	.019	.010	.010	.006	.003	

C Range: 0 - 360DEG
 C Interval: 10.0DEG
 Test Speed: HIGH
 Temperature:25.3DEG
 Operators:LQL
 Test Date:08 December 2021

g Range: 0 - 90DEG
 g Interval: 2.0DEG
 Test System:EVERFINE GO-2000B_V1 SYSTEM V2.0.403
 Humidity:65.0%
 Test Distance:10.365m [K=1.0000]
 Remarks: Zigen BGE ACTEC AS-10-500TF

UGR(Unified Glare Rating) Table

Test:U:230.51V I:0.0444A P:9.7274W PF:0.9502 Freq:49.99Hz Lamp Flux:563.154x1 lm										
NAME: New milan 7.5W LED spot					TYPE:			WEIGHT:		
SPEC.:					DIM.:			SERIAL No.:		
MFR.: CG LIGHTING					SUR.:			Shielding Angle:		
ceiling/cavity	0.7	0.7	0.5	0.5	0.3	0.7	0.7	0.5	0.5	0.3
walls	0.5	0.3	0.5	0.3	0.3	0.5	0.3	0.5	0.3	0.3
working plane	0.2	0.2	0.2	0.2	0.2	0.2	0.2	0.2	0.2	0.2
Room dimensions	Viewed crosswise					Viewed endwise				
x = 2H y = 2H	24.8	25.7	25.0	25.9	26.0	22.2	23.1	22.4	23.2	23.4
3H	24.7	25.5	24.9	25.7	25.9	22.0	22.8	22.3	23.0	23.2
4H	24.6	25.3	24.8	25.5	25.8	21.9	22.7	22.2	22.9	23.1
6H	24.5	25.2	24.8	25.4	25.7	21.9	22.6	22.1	22.8	23.1
8H	24.4	25.1	24.7	25.4	25.6	21.8	22.5	22.1	22.7	23.0
12H	24.4	25.0	24.7	25.3	25.6	21.8	22.4	22.1	22.7	23.0
4H 2H	24.6	25.3	24.8	25.5	25.8	22.0	22.7	22.2	22.9	23.2
3H	24.4	25.1	24.7	25.3	25.6	21.8	22.4	22.1	22.7	23.0
4H	24.3	24.9	24.6	25.2	25.5	21.7	22.3	22.0	22.6	22.9
6H	24.2	24.7	24.6	25.1	25.4	21.6	22.1	22.0	22.4	22.8
8H	24.2	24.6	24.5	25.0	25.4	21.5	22.0	21.9	22.4	22.7
12H	24.1	24.6	24.5	24.9	25.3	21.5	21.9	21.9	22.3	22.7
8H 4H	24.2	24.6	24.5	25.0	25.4	21.5	22.0	21.9	22.4	22.7
6H	24.1	24.5	24.5	24.8	25.3	21.4	21.8	21.9	22.2	22.6
8H	24.0	24.4	24.4	24.8	25.2	21.4	21.7	21.8	22.2	22.6
12H	23.9	24.2	24.4	24.7	25.2	21.3	21.6	21.8	22.1	22.5
12H 4H	24.1	24.5	24.5	24.9	25.3	21.5	21.9	21.9	22.3	22.7
6H	24.0	24.4	24.4	24.8	25.2	21.4	21.7	21.8	22.2	22.6
8H	23.9	24.2	24.4	24.7	25.2	21.3	21.6	21.8	22.1	22.5
Variations with the observer position at spacings:										
S = 1.0H	+ 3.2 / -13.1					+ 2.7 / -13.4				
1.5H	+ 5.0 / -12.1					+ 4.8 / -10.5				
2.0H	+ 7.4 / - 9.6					+ 6.4 / - 7.1				

CIE Pub.117, 563.2 lm Total Lamp Luminous Flux Correct (8log(F/F0) = -2.0)

C Range: 0 - 360DEG
 C Interval: 10.0DEG
 Test Speed: HIGH
 Temperature:25.3DEG
 Operators:LQL
 Test Date:08 December 2021

g Range: 0 - 90DEG
 g Interval: 2.0DEG
 Test System:EVERFINE GO-2000B_V1 SYSTEM V2.0.403
 Humidity:65.0%
 Test Distance:10.365m [K=1.0000]
 Remarks: Zigen BGE ACTEC AS-10-500TF

UTILIZATION FACTORS TABLE

Test:U:230.51V I:0.0444A P:9.7274W PF:0.9502 Freq:49.99Hz Lamp Flux:563.154x1 lm		
NAME: New milan 7.5W LED spot	TYPE:	WEIGHT:
SPEC.:	DIM.:	SERIAL No.:
MFR.: CG LIGHTING	SUR.:	Shielding Angle:

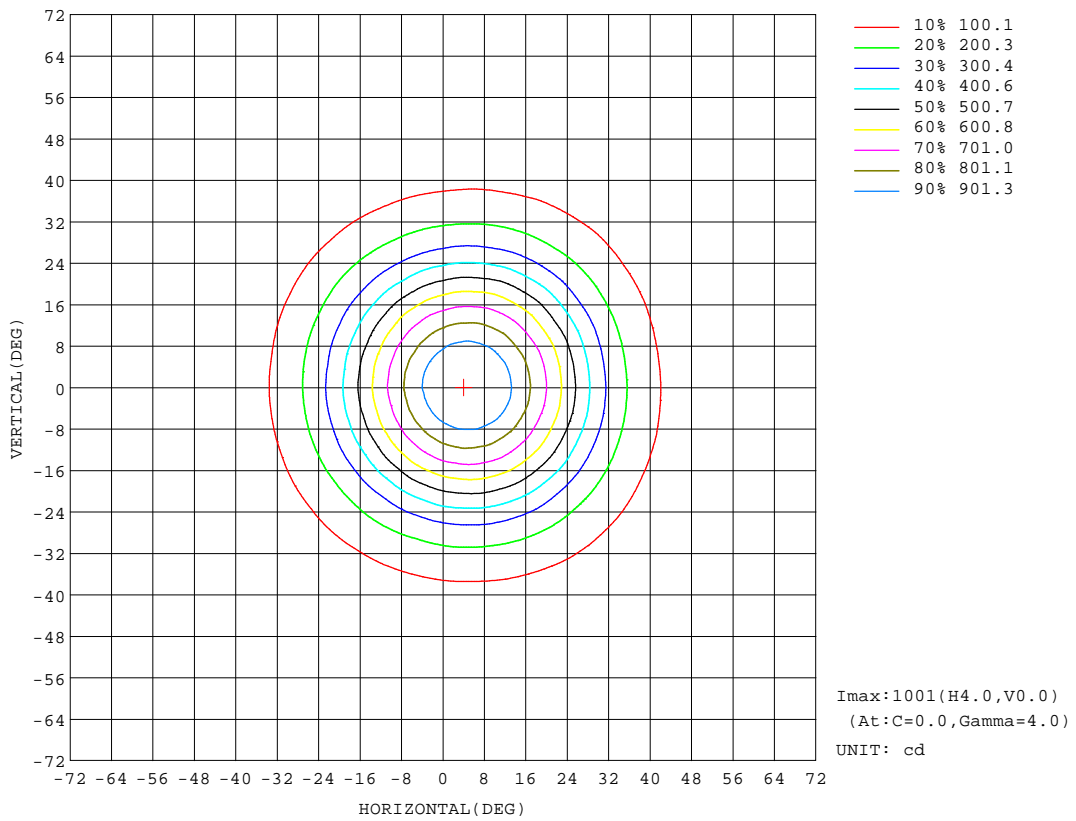
REFLECTANCE										
Ceiling	0.8	0.8	0.8	0.7	0.7	0.7	0.5	0.5	0.5	0
Walls	0.7	0.5	0.3	0.7	0.5	0.3	0.7	0.5	0.3	0
Working plane	0.2	0.2	0.2	0.2	0.2	0.2	0.2	0.2	0.2	0
ROOM INDEX	UTILIZATION FACTORS(PERCENT) $k(RI) \times RCR = 5$									
k = 0.60	88	82	78	87	82	78	87	81	78	74
0.80	95	90	86	95	89	86	94	89	86	82
1.00	100	94	91	99	94	91	97	94	90	86
1.25	104	99	95	103	98	95	101	97	94	90
1.50	106	102	99	105	101	98	103	100	97	93
2.00	109	105	102	108	104	101	105	102	100	94
2.50	111	107	104	109	106	103	106	103	101	95
3.00	112	109	106	110	107	105	107	105	103	97
4.00	114	111	109	112	110	108	108	107	105	98
5.00	115	113	111	113	111	110	109	108	107	99
ROOM INDEX	UF(total)									Direct
According to DIN EN 13032-2 2004			Suspended				SHRNOM = 1.25			

C Range: 0 - 360DEG
 C Interval: 10.0DEG
 Test Speed: HIGH
 Temperature:25.3DEG
 Operators:LQL
 Test Date:08 December 2021

g Range: 0 - 90DEG
 Interval: 2.0DEG
 Test System:EVERFINE GO-2000B_V1 SYSTEM V2.0.403
 Humidity:65.0%
 Test Distance:10.365m [K=1.0000]
 Remarks: Zigen BGE ACTEC AS-10-500TF

ISOCANDELA DIAGRAM

Test:U:230.51V I:0.0444A P:9.7274W PF:0.9502 Freq:49.99Hz Lamp Flux:563.154x1 lm		
NAME: New milan 7.5W LED spot	TYPE:	WEIGHT:
SPEC.:	DIM.:	SERIAL No.:
MFR.: CG LIGHTING	SUR.:	Shielding Angle:

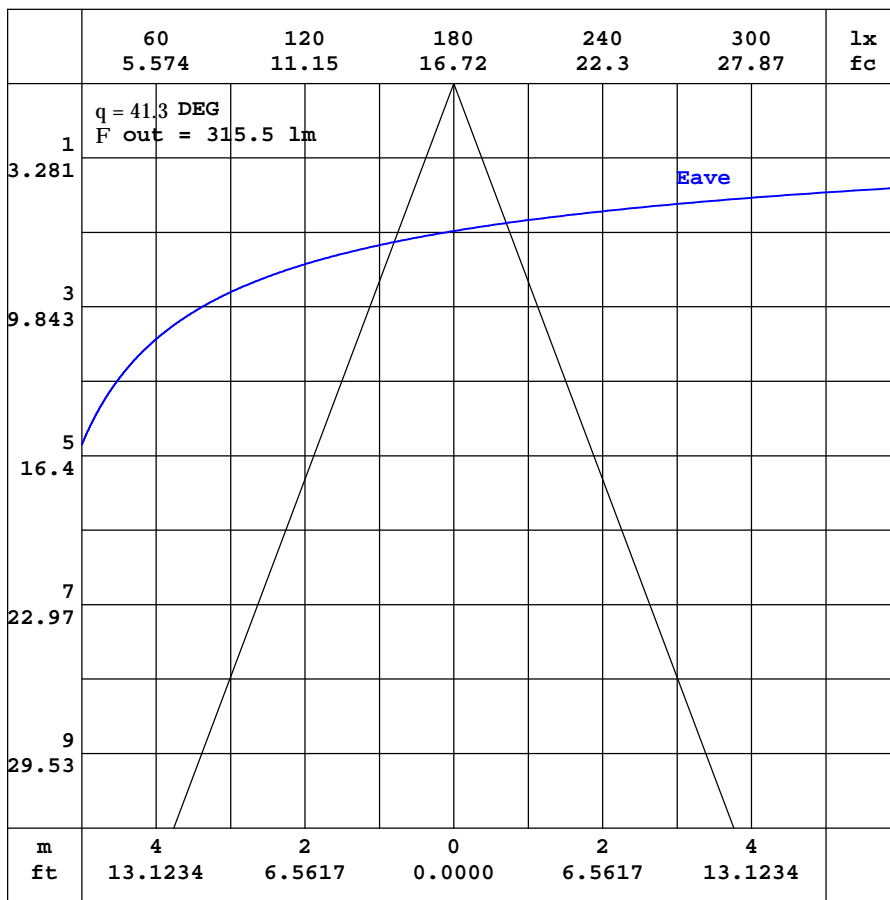


C Range: 0 - 360DEG
 C Interval: 10.0DEG
 Test Speed: HIGH
 Temperature:25.3DEG
 Operators:LQL
 Test Date:08 December 2021

Range: 0 - 90DEG
 Interval: 2.0DEG
 Test System:EVERFINE GO-2000B_V1 SYSTEM V2.0.403
 Humidity:65.0%
 Test Distance:10.365m [K=1.0000]
 Remarks: Zigen BGE ACTEC AS-10-500TF

AAI CURVES

Test:U:230.51V I:0.0444A P:9.7274W PF:0.9502 Freq:49.99Hz Lamp Flux:563.154x1 lm		
NAME: New milan 7.5W LED spot	TYPE:	WEIGHT:
SPEC.:	DIM.:	SERIAL No.:
MFR.: CG LIGHTING	SUR.:	Shielding Angle:



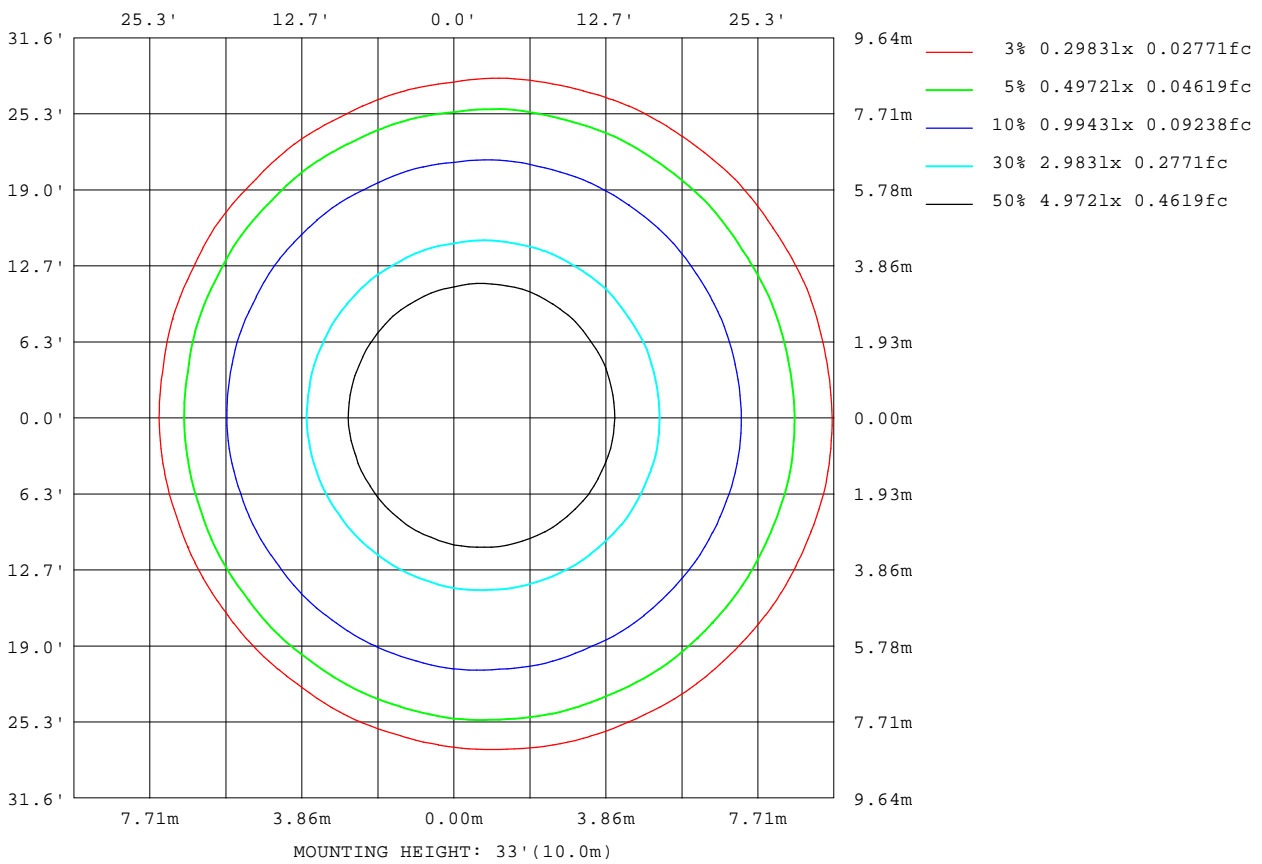
Note: The Curves indicate the illuminated area and the average illumination when the luminaire is at different distance.

C Range: 0 - 360DEG
 C Interval: 10.0DEG
 Test Speed: HIGH
 Temperature: 25.3DEG
 Operators: LQL
 Test Date: 08 December 2021

Range: 0 - 90DEG
 Interval: 2.0DEG
 Test System: EVERFINE GO-2000B_V1 SYSTEM V2.0.403
 Humidity: 65.0%
 Test Distance: 10.365m [K=1.0000]
 Remarks: Zigen BGE ACTEC AS-10-500TF

ISOLUX DIAGRAM

Test:U:230.51V I:0.0444A P:9.7274W PF:0.9502 Freq:49.99Hz Lamp Flux:563.154x1 lm		
NAME: New milan 7.5W LED spot	TYPE:	WEIGHT:
SPEC.:	DIM.:	SERIAL No.:
MFR.: CG LIGHTING	SUR.:	Shielding Angle:



C Range: 0 - 360DEG
 C Interval: 10.0DEG
 Test Speed: HIGH
 Temperature:25.3DEG
 Operators:LQL
 Test Date:08 December 2021

Range: 0 - 90DEG
 Interval: 2.0DEG
 Test System:EVERFINE GO-2000B_V1 SYSTEM V2.0.403
 Humidity:65.0%
 Test Distance:10.365m [K=1.0000]
 Remarks: Zigen BGE ACTEC AS-10-500TF

LED Avg.L Report

Test:U:230.51V I:0.0444A P:9.7274W PF:0.9502 Freq:49.99Hz Lamp Flux:563.154x1 lm		
NAME: New milan 7.5W LED spot	TYPE:	WEIGHT:
SPEC.:	DIM.:	SERIAL No.:
MFR.: CG LIGHTING	SUR.:	Shielding Angle:

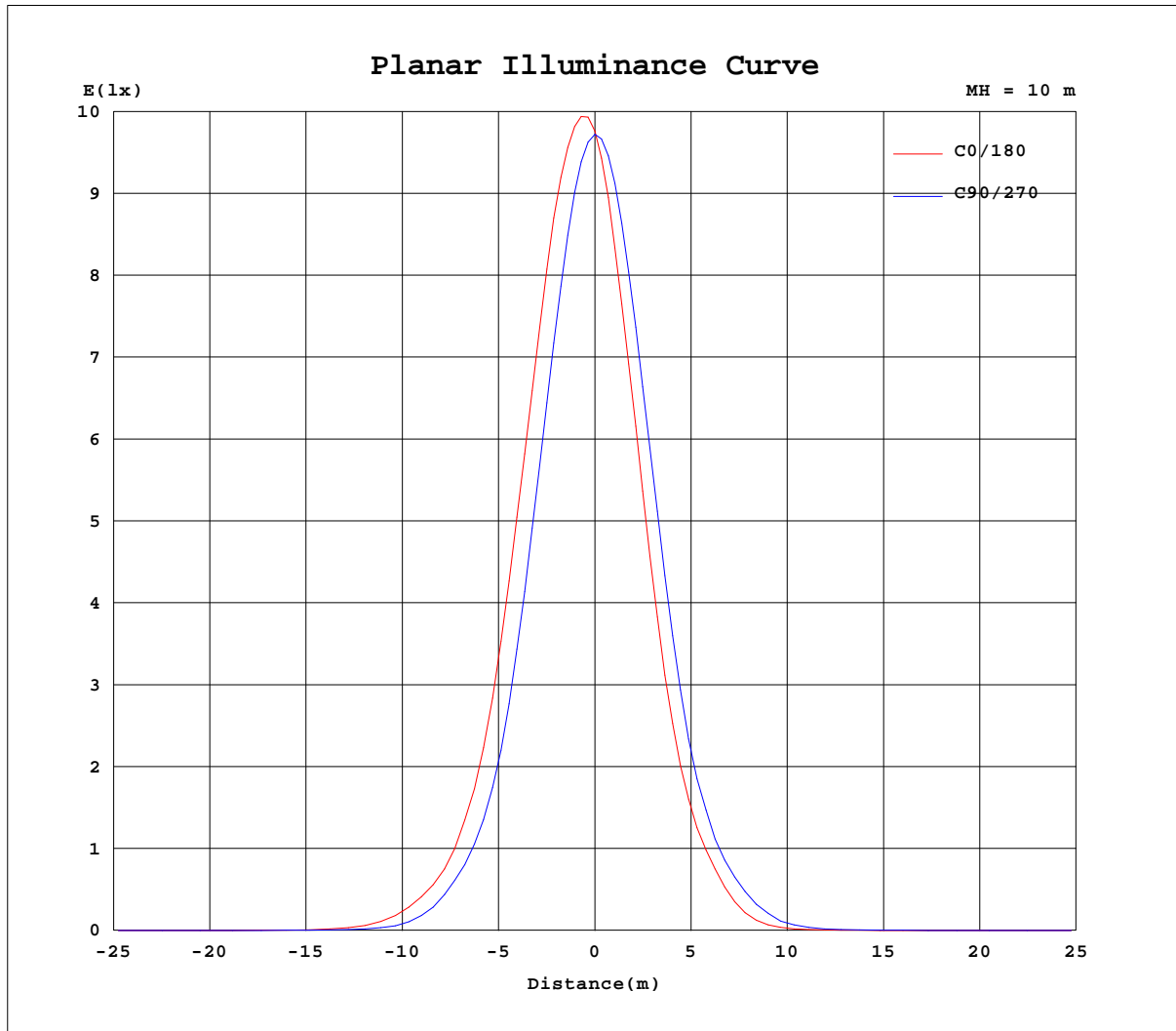
AvgL	cd/m2
L_0~180(65)av	2439
L_0~180(75)av	656
L_0~180(85)av	511
L_90~270(65)av	1378
L_90~270(75)av	498
L_90~270(85)av	369
L_45(65)av	2027
L_45(75)av	576
L_45(85)av	405

Standard: GB/T 29293-2012

C Range: 0 - 360DEG
 C Interval: 10.0DEG
 Test Speed: HIGH
 Temperature:25.3DEG
 Operators:LQL
 Test Date:08 December 2021

g Range: 0 - 90DEG
 g Interval: 2.0DEG
 Test System:EVERFINE GO-2000B_V1 SYSTEM V2.0.403
 Humidity:65.0%
 Test Distance:10.365m [K=1.0000]
 Remarks: Zigen BGE ACTEC AS-10-500TF

Planar Illuminance Curve



C Range: 0 - 360DEG
 C Interval: 10.0DEG
 Test Speed: HIGH
 Temperature: 25.3DEG
 Operators: LQL
 Test Date: 08 December 2021

Page Range: 0 - 90DEG
 Interval: 2.0DEG
 Test System: EVERFINE GO-2000B_V1 SYSTEM V2.0.403
 Humidity: 65.0%
 Test Distance: 10.365m [K=1.0000]
 Remarks: Zigen BGE ACTEC AS-10-500TF

LUMINOUS DISTRIBUTION INTENSITY DATA

Table with 3 columns: NAME, TYPE, WEIGHT; SPEC., DIM., SERIAL No.; MFR., SUR., Shielding Angle.

Table--1

UNIT: cd

Large data table with columns for C (DEG) and g (DEG) and rows for intensity values from 0 to 90 degrees.

C Range: 0 - 360DEG
C Interval: 10.0DEG
Test Speed: HIGH
Temperature:25.3DEG
Operators:LQL
Test Date:08 December 2021

Range: 0 - 90DEG
Interval: 2.0DEG
Test System:EVERFINE GO-2000B_V1 SYSTEM V2.0.403
Humidity:65.0%
Test Distance:10.365m [K=1.0000]
Remarks: Zigen BGE ACTEC AS-10-500TF

LUMINOUS DISTRIBUTION INTENSITY DATA

Test:U:230.51V I:0.0444A P:9.7274W PF:0.9502 Freq:49.99Hz Lamp Flux:563.154x1 lm		
NAME: New milan 7.5W LED spot	TYPE:	WEIGHT:
SPEC.:	DIM.:	SERIAL No.:
MFR.: CG LIGHTING	SUR.:	Shielding Angle:

Table--2

UNIT: cd

C(DEG) g (DEG)	190	200	210	220	230	240	250	260	270	280	290	300	310	320	330	340	350		
0	975	975	974	974	973	974	973	973	972	972	972	972	973	972	973	972	974		
5	901	907	909	917	921	931	937	946	953	963	970	978	984	990	994	997	999		
10	725	732	738	752	764	784	800	823	842	867	887	908	924	937	947	956	959		
15	588	598	605	623	639	662	682	708	727	755	778	807	828	849	861	877	881		
20	378	387	395	413	429	454	471	500	523	556	585	619	642	664	678	694	699		
25	267	274	281	294	305	323	340	364	386	415	441	475	496	522	535	554	558		
30	153	157	160	169	176	186	197	210	227	242	258	277	295	312	323	337	341		
35	93.9	99.5	104	112	118	127	133	143	151	164	174	188	198	211	221	227	233		
40	28.3	31.5	33.4	37.3	42.3	49.5	55.0	64.8	71.9	84.3	91.4	101	106	112	115	121	123		
45	10.5	11.7	12.1	14.6	16.1	19.8	22.6	27.9	31.6	41.0	45.5	54.0	58.4	66.2	69.9	74.6	75.6		
50	3.54	3.66	3.78	3.99	4.24	4.80	5.44	6.72	7.94	9.97	11.5	14.2	16.3	19.4	21.2	22.7	23.2		
55	2.24	2.33	2.45	2.58	2.75	3.00	3.34	3.78	4.12	4.70	5.14	6.02	6.65	7.56	8.06	9.25	9.13		
60	0.58	0.71	0.90	0.99	1.16	1.34	1.62	1.92	2.22	2.49	2.77	2.94	3.20	3.40	3.53	3.78	3.87		
65	0.38	0.35	0.41	0.36	0.47	0.46	0.58	0.85	1.12	1.36	1.64	1.80	2.01	2.22	2.33	2.45	2.53		
70	0.18	0.11	0.21	0.15	0.26	0.21	0.32	0.30	0.39	0.35	0.47	0.45	0.54	0.59	0.64	0.73	0.79		
75	0.10	0.03	0.10	0.04	0.13	0.10	0.17	0.15	0.24	0.22	0.32	0.28	0.38	0.34	0.42	0.36	0.44		
80	0.05	0.02	0.05	0.02	0.05	0.02	0.07	0.02	0.10	0.04	0.13	0.08	0.16	0.12	0.21	0.13	0.21		
85	0.02	0.02	0.03	0.02	0.04	0.02	0.04	0.02	0.05	0.02	0.07	0.03	0.10	0.03	0.10	0.04	0.11		
90	0.02	0.02	0.03	0.03	0.02	0.02	0.02	0.02	0.02	0.03	0.03	0.03	0.04	0.03	0.04	0.04	0.04		

C Range: 0 - 360DEG
 C Interval: 10.0DEG
 Test Speed: HIGH
 Temperature:25.3DEG
 Operators:LQL
 Test Date:08 December 2021

g Range: 0 - 90DEG
 Interval: 2.0DEG
 Test System:EVERFINE GO-2000B_V1 SYSTEM V2.0.403
 Humidity:65.0%
 Test Distance:10.365m [K=1.0000]
 Remarks: Zigen BGE ACTEC AS-10-500TF