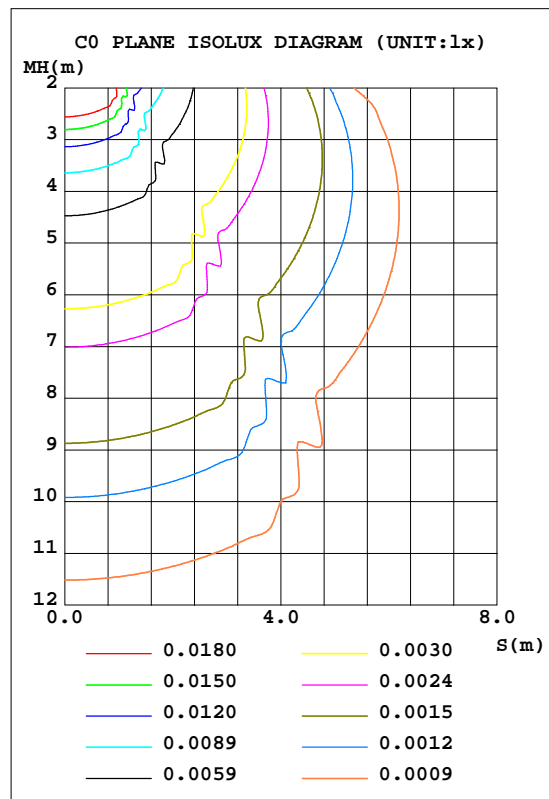
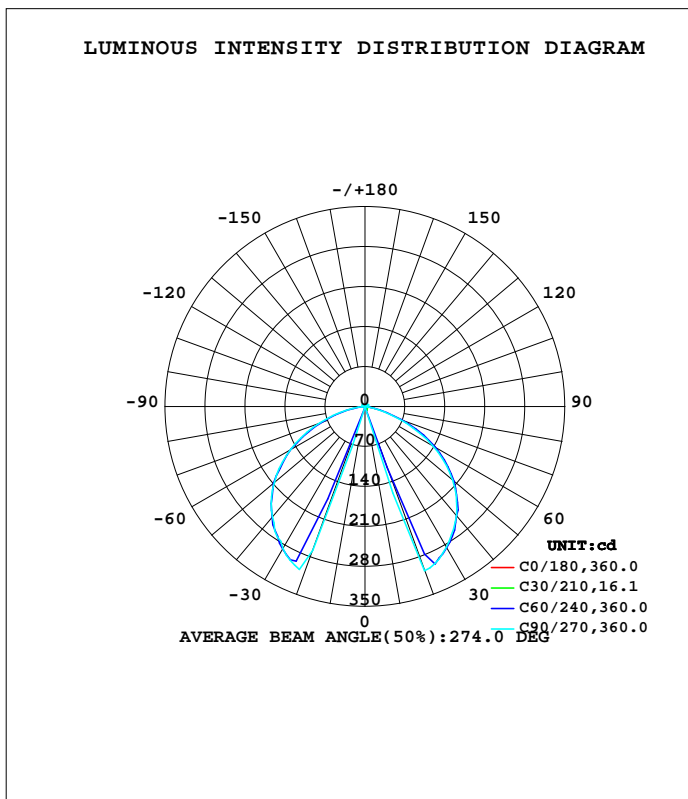


LUMINAIRE PHOTOMETRIC TEST REPORT

Test:U:230.65V I:0.0410A P:9.1673W PF:0.9687 Freq:49.99Hz Lamp Flux:492.577x1 lm		
NAME: Montana 7.5W LED outdoor wall light	TYPE:	WEIGHT:
SPEC.:	DIM.:	SERIAL No.:
MFR.: CG LIGHTING	SUR.:	Shielding Angle:

DATA OF LAMP		PHOTOMETRIC DATA				Eff: 53.73 lm/W
MODEL	1437B2D-Q5	I _{max} (cd)	308.4	S/MH(C0/180)	1.70	
NOMINAL POWER(W)		LOR(%)	100.0	S/MH(C90/270)	0.36	
RATED VOLTAGE(V)	230.0	TOTAL FLUX(lm)	492.58	h UP, DN(C0-180)	1.7,47.3	
NOMINAL FLUX(lm)	492.577	CIE CLASS	DIRECT	h UP, DN(C180-360)	1.7,49.3	
LAMPS INSIDE	1	h up(%)	3.4	CIBSE SHR NOM	0.00	
TEST VOLTAGE(V)	230.0	h down(%)	96.6	CIBSE SHR MAX	1.00	



C Range: 0 - 360DEG
 C Interval: 10.0DEG
 Test Speed: HIGH
 Temperature:25.3DEG
 Operators:LQL
 Test Date:24 August 2022

Range: 0 - 180DEG
 Interval: 2.0DEG
 Test System:EVERFINE GO-2000B_V1 SYSTEM V2.0.403
 Humidity:65.0%
 Test Distance:10.365m [K=1.0000]
 Remarks: BME LNTC10W500LR

ZONAL FLUX DIAGRAM

ZONAL FLUX DIAGRAM:

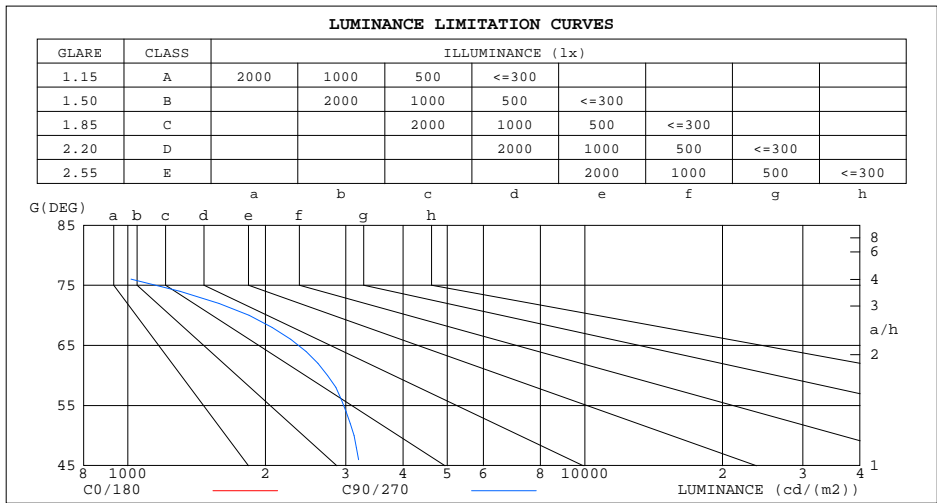
g	C0	C45	C90	C135	C180	C225	C270	C315	g	F zone	F total	%lum,lamp
10	0.1180	0.2988	0.2960	0.2989	0.1180	0.2767	0.2208	0.2693	0- 10	0.0162	0.0162	0.00,0.00
20	0.1180	1.609	306.0	1.949	0.1180	1.302	267.6	1.342	10- 20	4.230	4.246	0.86,0.86
30	0.0886	284.2	284.7	282.5	0.1254	265.7	287.6	281.2	20- 30	66.15	70.39	14.3,14.3
40	0.0885	249.1	249.2	246.2	0.1328	250.2	252.5	252.6	30- 40	103.4	173.8	35.3,35.3
50	0.0885	201.3	200.9	198.0	0.1328	203.7	207.6	206.3	40- 50	108.2	281.9	57.2,57.2
60	0.0885	142.8	136.8	136.6	0.1328	143.5	150.6	148.6	50- 60	96.00	377.9	76.7,76.7
70	0.0812	72.35	63.06	66.31	0.1328	74.94	84.56	83.48	60- 70	66.51	444.4	90.2,90.2
80	0.0811	8.801	8.115	8.031	0.1328	12.21	22.51	16.84	70- 80	27.46	471.9	95.8,95.8
90	0.0811	2.501	3.681	2.537	0.1402	2.552	3.755	2.611	80- 90	4.088	476.0	96.6,96.6
100	0.1180	2.832	4.131	2.796	0.1920	2.858	4.101	2.917	90-100	2.726	478.7	97.2,97.2
110	0.2211	3.131	4.898	3.146	0.3765	3.205	4.875	3.234	100-110	2.955	481.7	97.8,97.8
120	0.4792	2.969	5.732	3.135	0.6937	3.175	5.745	3.160	110-120	3.089	484.8	98.4,98.4
130	0.8186	2.161	5.811	2.423	1.048	2.479	5.828	2.294	120-130	2.839	487.6	99,99
140	1.195	1.822	3.237	2.220	1.380	2.265	3.248	1.936	130-140	1.955	489.6	99.4,99.4
150	1.512	1.671	2.463	2.180	1.697	2.217	2.420	1.774	140-150	1.292	490.8	99.6,99.6
160	1.770	1.737	2.102	2.283	1.940	2.298	2.058	1.833	150-160	0.9152	491.8	99.8,99.8
170	2.102	2.040	2.471	2.405	2.221	2.379	2.412	2.121	160-170	0.5973	492.4	100,100
180	2.272	2.290	2.427	2.357	2.331	2.301	2.449	2.349	170-180	0.2203	492.6	100,100
DEG	LUMINOUS INTENSITY:cd									UNIT:lm		

C Range: 0 - 360DEG
 C Interval: 10.0DEG
 Test Speed: HIGH
 Temperature:25.3DEG
 Operators:LQL
 Test Date:24 August 2022

g Range: 0 - 180DEG
 Interval: 2.0DEG
 Test System:EVERFINE GO-2000B_V1 SYSTEM V2.0.403
 Humidity:65.0%
 Test Distance:10.365m [K=1.0000]
 Remarks: BME LNTC10W500LR

LUMINANCE LIMITATION CURVES

Test:U:230.65V I:0.0410A P:9.1673W PF:0.9687 Freq:49.99Hz Lamp Flux:492.577x1 lm		
NAME: Montana 7.5W LED outdoor wall light	TYPE:	WEIGHT:
SPEC.:	DIM.:	SERIAL No.:
MFR.: CG LIGHTING	SUR.:	Shielding Angle:



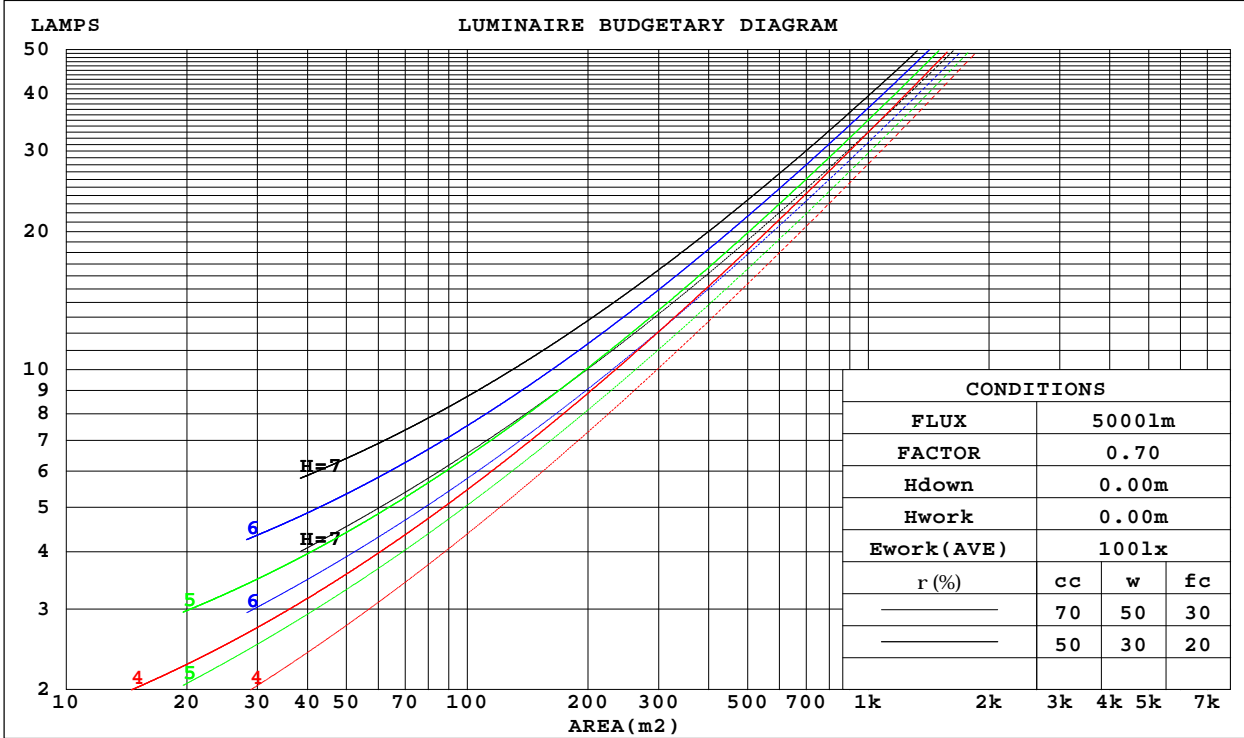
C Range: 0 - 360DEG
 C Interval: 10.0DEG
 Test Speed: HIGH
 Temperature: 25.3DEG
 Operators: LQL
 Test Date: 24 August 2022

G Range: 0 - 180DEG
 G Interval: 2.0DEG
 Test System: EVERFINE GO-2000B_V1 SYSTEM V2.0.403
 Humidity: 65.0%
 Test Distance: 10.365m [K=1.0000]
 Remarks: BME LNTC10W500LR

CU AND LUMINAIRE BUDGETARY ESTIMATE DIAGRAM

Test:U:230.65V I:0.0410A P:9.1673W PF:0.9687 Freq:49.99Hz Lamp Flux:492.577x1 lm		
NAME: Montana 7.5W LED outdoor wall light	TYPE:	WEIGHT:
SPEC.:	DIM.:	SERIAL No.:
MFR.: CG LIGHTING	SUR.:	Shielding Angle:

r _{cc}	80%			70%			50%			30%			10%			0
r _w	50%	30%	10%	50%	30%	10%	50%	30%	10%	50%	30%	10%	50%	30%	10%	0
r _{fc}	20%			20%			20%			20%			20%			0
RCR	RCR:Room Cavity Ratio						Coefficients of Utilization(CU)									
0.0	1.18	1.18	1.18	1.15	1.15	1.15	1.09	1.09	1.09	1.04	1.04	1.04	.99	.99	.99	.97
1.0	1.03	.99	.95	1.00	.96	.93	.95	.92	.89	.91	.88	.86	.87	.85	.83	.81
2.0	.89	.82	.76	.86	.80	.74	.82	.77	.72	.79	.74	.70	.75	.71	.68	.66
3.0	.77	.68	.61	.75	.67	.60	.71	.64	.59	.68	.62	.57	.65	.60	.56	.53
4.0	.67	.57	.50	.65	.56	.50	.62	.54	.48	.59	.53	.47	.57	.51	.46	.44
5.0	.58	.49	.42	.57	.48	.41	.54	.46	.40	.52	.45	.40	.50	.44	.39	.36
6.0	.51	.42	.35	.50	.41	.35	.48	.40	.34	.46	.39	.33	.44	.38	.33	.31
7.0	.46	.36	.30	.45	.36	.29	.43	.35	.29	.41	.34	.28	.39	.33	.28	.26
8.0	.41	.32	.25	.40	.31	.25	.38	.30	.25	.37	.30	.24	.35	.29	.24	.22
9.0	.37	.28	.22	.36	.27	.22	.34	.27	.21	.33	.26	.21	.32	.25	.21	.19
10.0	.33	.25	.19	.32	.24	.19	.31	.24	.19	.30	.23	.18	.29	.23	.18	.16



C Range: 0 - 360DEG
 C Interval: 10.0DEG
 Test Speed: HIGH
 Temperature:25.3DEG
 Operators:LQL
 Test Date:24 August 2022

Range: 0 - 180DEG
 Interval: 2.0DEG
 Test System:EVERFINE GO-2000B_V1 SYSTEM V2.0.403
 Humidity:65.0%
 Test Distance:10.365m [K=1.0000]
 Remarks: BME LNTC10W500LR

WEC AND CCEC

Test:U:230.65V I:0.0410A P:9.1673W PF:0.9687 Freq:49.99Hz Lamp Flux:492.577x1 lm		
NAME: Montana 7.5W LED outdoor wall light	TYPE:	WEIGHT:
SPEC.:	DIM.:	SERIAL No.:
MFR.: CG LIGHTING	SUR.:	Shielding Angle:

rcc	80%			70%			50%			30%			10%			0
rw	50%	30%	10%	50%	30%	10%	50%	30%	10%	50%	30%	10%	50%	30%	10%	0
rfc	20%			20%			20%			20%			20%			0
RCR	RCR:Room Cavity Ratio						Wall Exitance Coefficients(WEC)									
0.0																
1.0	.312	.177	.056	.304	.173	.055	.288	.165	.053	.274	.158	.051	.262	.152	.049	
2.0	.301	.165	.051	.294	.162	.050	.280	.156	.048	.268	.150	.047	.256	.145	.046	
3.0	.283	.150	.045	.276	.148	.045	.264	.143	.043	.253	.139	.042	.242	.134	.042	
4.0	.263	.137	.040	.257	.135	.040	.246	.131	.039	.236	.127	.038	.227	.123	.038	
5.0	.244	.125	.036	.239	.123	.036	.229	.119	.035	.220	.116	.035	.212	.113	.034	
6.0	.227	.114	.033	.223	.113	.032	.214	.110	.032	.206	.107	.031	.198	.104	.031	
7.0	.212	.105	.030	.208	.104	.030	.200	.101	.029	.192	.099	.029	.185	.096	.028	
8.0	.198	.097	.027	.194	.096	.027	.187	.094	.027	.180	.091	.026	.174	.089	.026	
9.0	.186	.090	.025	.182	.089	.025	.176	.087	.025	.170	.085	.024	.164	.083	.024	
10.0	.175	.084	.023	.171	.083	.023	.165	.081	.023	.160	.079	.023	.155	.078	.022	

rcc	80%			70%			50%			30%			10%			0
rw	50%	30%	10%	50%	30%	10%	50%	30%	10%	50%	30%	10%	50%	30%	10%	0
rfc	20%			20%			20%			20%			20%			0
RCR	RCR:Room Cavity Ratio						Ceiling Cavity Exitance Coefficients(CCEC)									
0.0	.216	.216	.216	.185	.185	.185	.126	.126	.126	.072	.072	.072	.023	.023	.023	
1.0	.206	.182	.160	.177	.156	.138	.121	.107	.095	.069	.062	.055	.022	.020	.018	
2.0	.200	.158	.123	.171	.136	.106	.117	.094	.074	.068	.055	.043	.022	.018	.014	
3.0	.193	.141	.099	.166	.121	.086	.114	.084	.060	.066	.049	.035	.021	.016	.012	
4.0	.187	.128	.083	.160	.110	.072	.110	.077	.050	.064	.045	.030	.020	.015	.010	
5.0	.180	.118	.071	.155	.102	.062	.106	.071	.044	.062	.042	.026	.020	.014	.009	
6.0	.173	.109	.064	.149	.095	.055	.103	.066	.039	.060	.039	.023	.019	.013	.008	
7.0	.167	.103	.058	.144	.089	.050	.099	.063	.036	.058	.037	.021	.019	.012	.007	
8.0	.161	.097	.054	.138	.084	.047	.096	.059	.033	.056	.035	.020	.018	.011	.007	
9.0	.155	.092	.050	.133	.080	.044	.092	.056	.031	.054	.033	.019	.017	.011	.006	
10.0	.149	.088	.048	.128	.077	.042	.089	.054	.030	.052	.032	.018	.017	.010	.006	

C Range: 0 - 360DEG
 C Interval: 10.0DEG
 Test Speed: HIGH
 Temperature:25.3DEG
 Operators:LQL
 Test Date:24 August 2022

g Range: 0 - 180DEG
 g Interval: 2.0DEG
 Test System:EVERFINE GO-2000B_V1 SYSTEM V2.0.403
 Humidity:65.0%
 Test Distance:10.365m [K=1.0000]
 Remarks: BME LNTC10W500LR

UGR(Unified Glare Rating) Table

Test:U:230.65V I:0.0410A P:9.1673W PF:0.9687 Freq:49.99Hz Lamp Flux:492.577x1 lm										
NAME: Montana 7.5W LED outdoor wall light					TYPE:			WEIGHT:		
SPEC.:					DIM.:			SERIAL No.:		
MFR.: CG LIGHTING					SUR.:			Shielding Angle:		
ceiling/cavity	0.7	0.7	0.5	0.5	0.3	0.7	0.7	0.5	0.5	0.3
walls	0.5	0.3	0.5	0.3	0.3	0.5	0.3	0.5	0.3	0.3
working plane	0.2	0.2	0.2	0.2	0.2	0.2	0.2	0.2	0.2	0.2
Room dimensions	Viewed crosswise					Viewed endwise				
x = 2H y = 2H	12.6	14.2	12.9	14.4	14.7	21.2	22.8	21.5	23.1	23.4
3H	12.3	13.8	12.7	14.1	14.4	22.1	23.6	22.5	23.9	24.2
4H	12.2	13.6	12.6	13.9	14.2	22.3	23.6	22.6	24.0	24.3
6H	12.1	13.4	12.5	13.7	14.1	22.2	23.5	22.6	23.8	24.2
8H	12.0	13.3	12.4	13.6	14.0	22.1	23.4	22.5	23.7	24.1
12H	12.0	13.2	12.4	13.5	13.9	22.1	23.3	22.5	23.7	24.0
4H 2H	16.7	18.1	17.1	18.4	18.8	21.6	22.9	21.9	23.3	23.6
3H	16.8	18.0	17.2	18.3	18.7	22.6	23.8	23.1	24.2	24.6
4H	16.7	17.7	17.1	18.1	18.5	22.8	23.9	23.3	24.3	24.7
6H	16.6	17.5	17.0	17.9	18.4	22.8	23.8	23.3	24.2	24.6
8H	16.5	17.4	17.0	17.8	18.3	22.8	23.7	23.2	24.1	24.6
12H	16.5	17.3	16.9	17.7	18.2	22.8	23.6	23.2	24.0	24.5
8H 4H	17.4	18.3	17.9	18.7	19.2	22.8	23.7	23.3	24.1	24.6
6H	17.3	18.0	17.8	18.5	19.0	22.8	23.6	23.3	24.0	24.5
8H	17.3	17.9	17.8	18.4	18.9	22.8	23.5	23.3	23.9	24.5
12H	17.2	17.8	17.8	18.3	18.8	22.8	23.3	23.3	23.9	24.4
12H 4H	17.4	18.2	17.9	18.6	19.1	22.8	23.6	23.3	24.0	24.5
6H	17.3	17.9	17.8	18.4	19.0	22.8	23.4	23.3	23.9	24.4
8H	17.3	17.8	17.8	18.3	18.9	22.8	23.3	23.3	23.8	24.4
Variations with the observer position at spacings:										
S = 1.0H	+ 0.8 / - 1.3					+ 0.3 / - 0.3				
1.5H	+ 2.0 / - 2.9					+ 0.4 / - 0.7				
2.0H	+ 3.6 / - 7.2					+ 0.4 / - 0.5				

CIE Pub.117, 492.6 lm Total Lamp Luminous Flux Correct (8log(F/F0) = -2.5)

C Range: 0 - 360DEG
 C Interval: 10.0DEG
 Test Speed: HIGH
 Temperature:25.3DEG
 Operators:LQL
 Test Date:24 August 2022

g Range: 0 - 180DEG
 g Interval: 2.0DEG
 Test System:EVERFINE GO-2000B_V1 SYSTEM V2.0.403
 Humidity:65.0%
 Test Distance:10.365m [K=1.0000]
 Remarks: BME LNTC10W500LR

UTILIZATION FACTORS TABLE

Test:U:230.65V I:0.0410A P:9.1673W PF:0.9687 Freq:49.99Hz Lamp Flux:492.577x1 lm		
NAME: Montana 7.5W LED outdoor wall light	TYPE:	WEIGHT:
SPEC.:	DIM.:	SERIAL No.:
MFR.: CG LIGHTING	SUR.:	Shielding Angle:

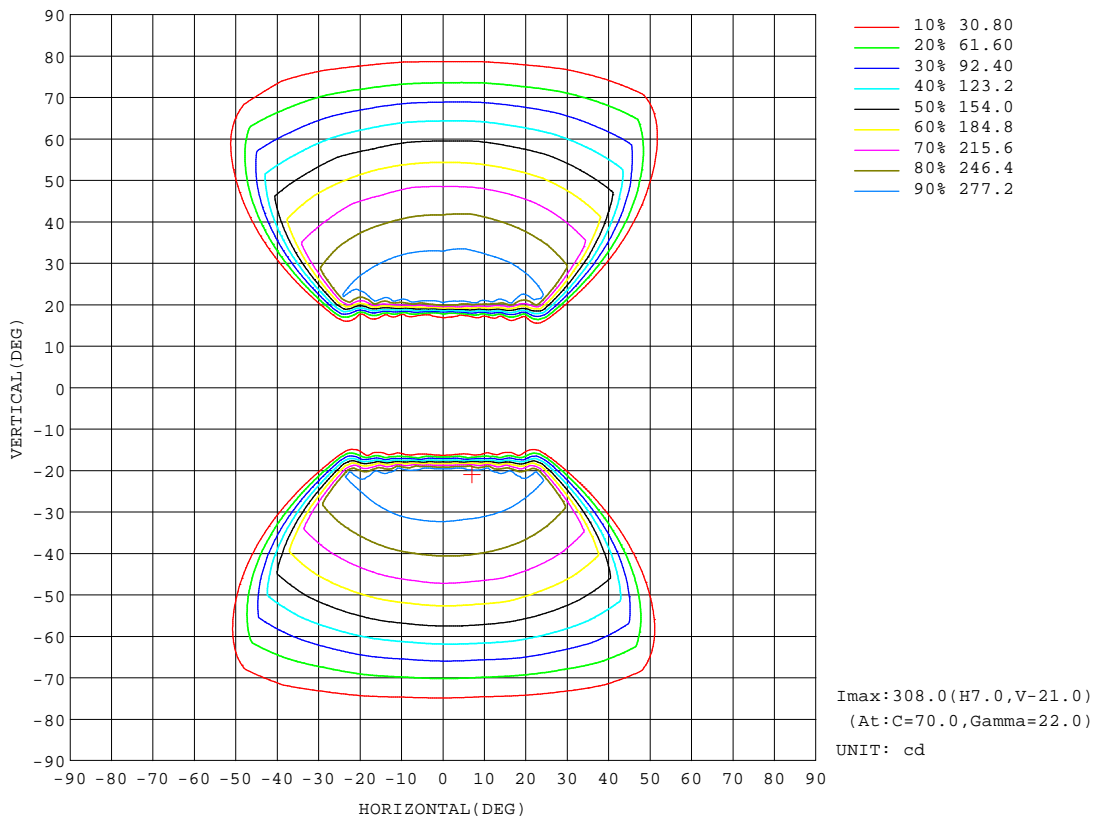
REFLECTANCE										
Ceiling	0.8	0.8	0.8	0.7	0.7	0.7	0.5	0.5	0.5	0
Walls	0.7	0.5	0.3	0.7	0.5	0.3	0.7	0.5	0.3	0
Working plane	0.2	0.2	0.2	0.2	0.2	0.2	0.2	0.2	0.2	0
ROOM INDEX	UTILIZATION FACTORS(PERCENT) $k(RI) \times RCR = 5$									
k = 0.60	51	39	31	50	38	31	49	38	31	24
0.80	62	50	42	61	49	41	59	48	41	33
1.00	72	60	52	70	59	52	68	60	51	43
1.25	80	68	61	78	68	60	75	66	59	51
1.50	85	75	67	83	74	66	80	71	65	57
2.00	93	84	77	91	82	76	87	80	74	66
2.50	97	89	83	95	87	81	90	84	79	70
3.00	101	94	88	98	92	86	94	88	84	74
4.00	105	99	94	102	97	92	97	93	89	79
5.00	107	102	98	105	100	96	100	96	93	82
ROOM INDEX	UF(total)									Direct
According to DIN EN 13032-2 2004			Suspended				SHRNOM = 1.25			

C Range: 0 - 360DEG
 C Interval: 10.0DEG
 Test Speed: HIGH
 Temperature:25.3DEG
 Operators:LQL
 Test Date:24 August 2022

g Range: 0 - 180DEG
 Interval: 2.0DEG
 Test System:EVERFINE GO-2000B_V1 SYSTEM V2.0.403
 Humidity:65.0%
 Test Distance:10.365m [K=1.0000]
 Remarks: BME LNTC10W500LR

ISOCANDELA DIAGRAM

Test:U:230.65V I:0.0410A P:9.1673W PF:0.9687 Freq:49.99Hz Lamp Flux:492.577x1 lm		
NAME: Montana 7.5W LED outdoor wall light	TYPE:	WEIGHT:
SPEC.:	DIM.:	SERIAL No.:
MFR.: CG LIGHTING	SUR.:	Shielding Angle:

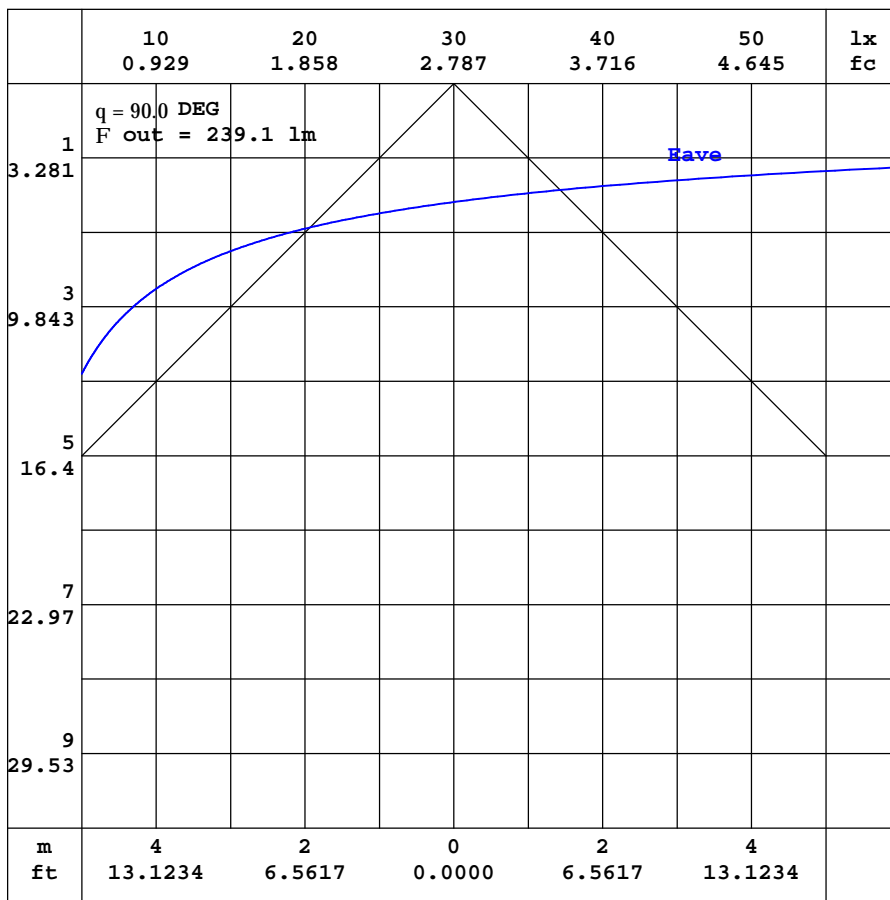


C Range: 0 - 360DEG
 C Interval: 10.0DEG
 Test Speed: HIGH
 Temperature: 25.3DEG
 Operators: LQL
 Test Date: 24 August 2022

Range: 0 - 180DEG
 Interval: 2.0DEG
 Test System: EVERFINE GO-2000B_V1 SYSTEM V2.0.403
 Humidity: 65.0%
 Test Distance: 10.365m [K=1.0000]
 Remarks: BME LNTC10W500LR

AAI CURVES

Test:U:230.65V I:0.0410A P:9.1673W PF:0.9687 Freq:49.99Hz Lamp Flux:492.577x1 lm		
NAME: Montana 7.5W LED outdoor wall light	TYPE:	WEIGHT:
SPEC.:	DIM.:	SERIAL No.:
MFR.: CG LIGHTING	SUR.:	Shielding Angle:



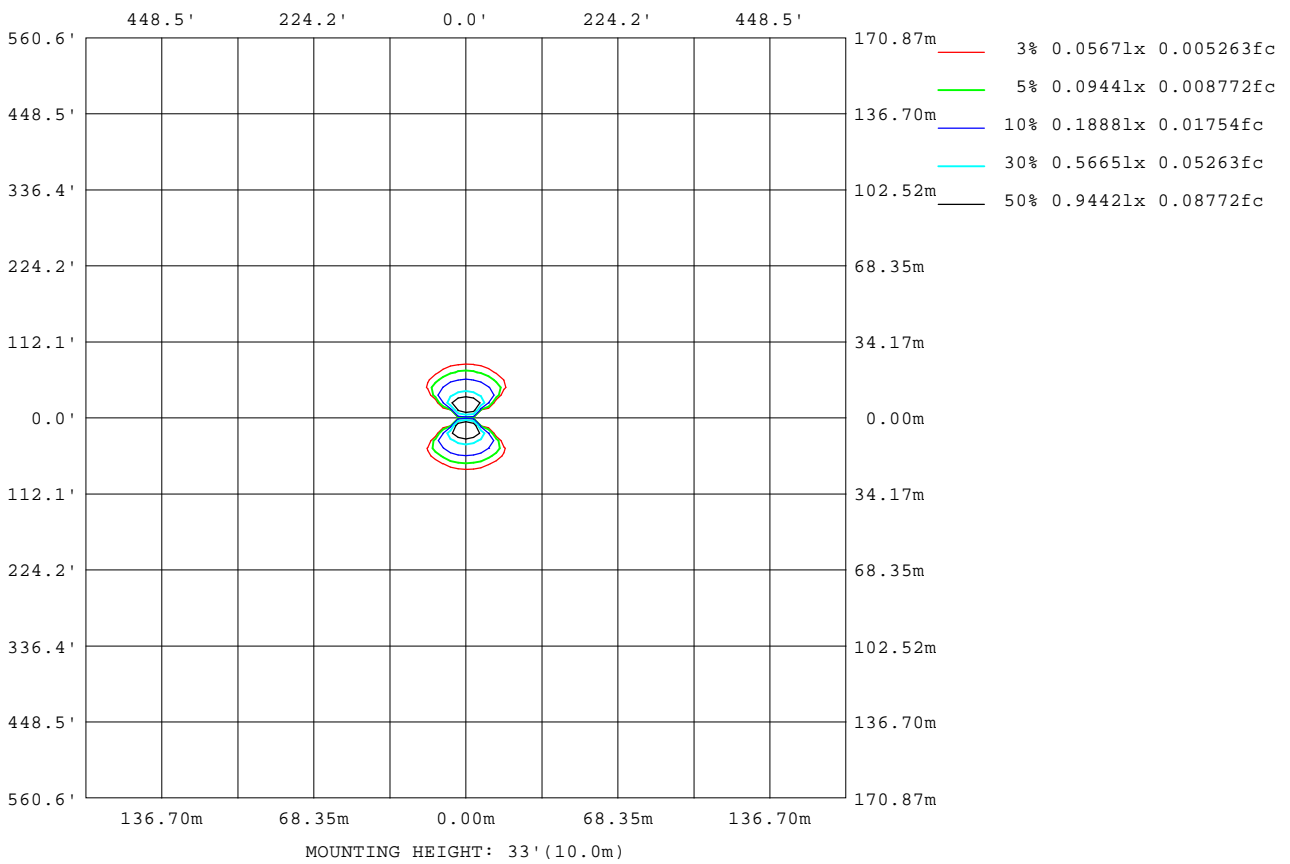
Note:The Curves indicate the illuminated area and the average illumination when the luminaire is at different distance.

C Range: 0 - 360DEG
 C Interval: 10.0DEG
 Test Speed: HIGH
 Temperature:25.3DEG
 Operators:LQL
 Test Date:24 August 2022

Range: 0 - 180DEG
 Interval: 2.0DEG
 Test System:EVERFINE GO-2000B_V1 SYSTEM V2.0.403
 Humidity:65.0%
 Test Distance:10.365m [K=1.0000]
 Remarks: BME LNTC10W500LR

ISOLUX DIAGRAM

Test:U:230.65V I:0.0410A P:9.1673W PF:0.9687 Freq:49.99Hz Lamp Flux:492.577x1 lm		
NAME: Montana 7.5W LED outdoor wall light	TYPE:	WEIGHT:
SPEC.:	DIM.:	SERIAL No.:
MFR.: CG LIGHTING	SUR.:	Shielding Angle:



C Range: 0 - 360DEG
 C Interval: 10.0DEG
 Test Speed: HIGH
 Temperature: 25.3DEG
 Operators: LQL
 Test Date: 24 August 2022

g Range: 0 - 180DEG
 Interval: 2.0DEG
 Test System: EVERFINE GO-2000B_V1 SYSTEM V2.0.403
 Humidity: 65.0%
 Test Distance: 10.365m [K=1.0000]
 Remarks: BME LNTC10W500LR

LED Avg.L Report

Test:U:230.65V I:0.0410A P:9.1673W PF:0.9687 Freq:49.99Hz Lamp Flux:492.577x1 lm		
NAME: Montana 7.5W LED outdoor wall light	TYPE:	WEIGHT:
SPEC.:	DIM.:	SERIAL No.:
MFR.: CG LIGHTING	SUR.:	Shielding Angle:

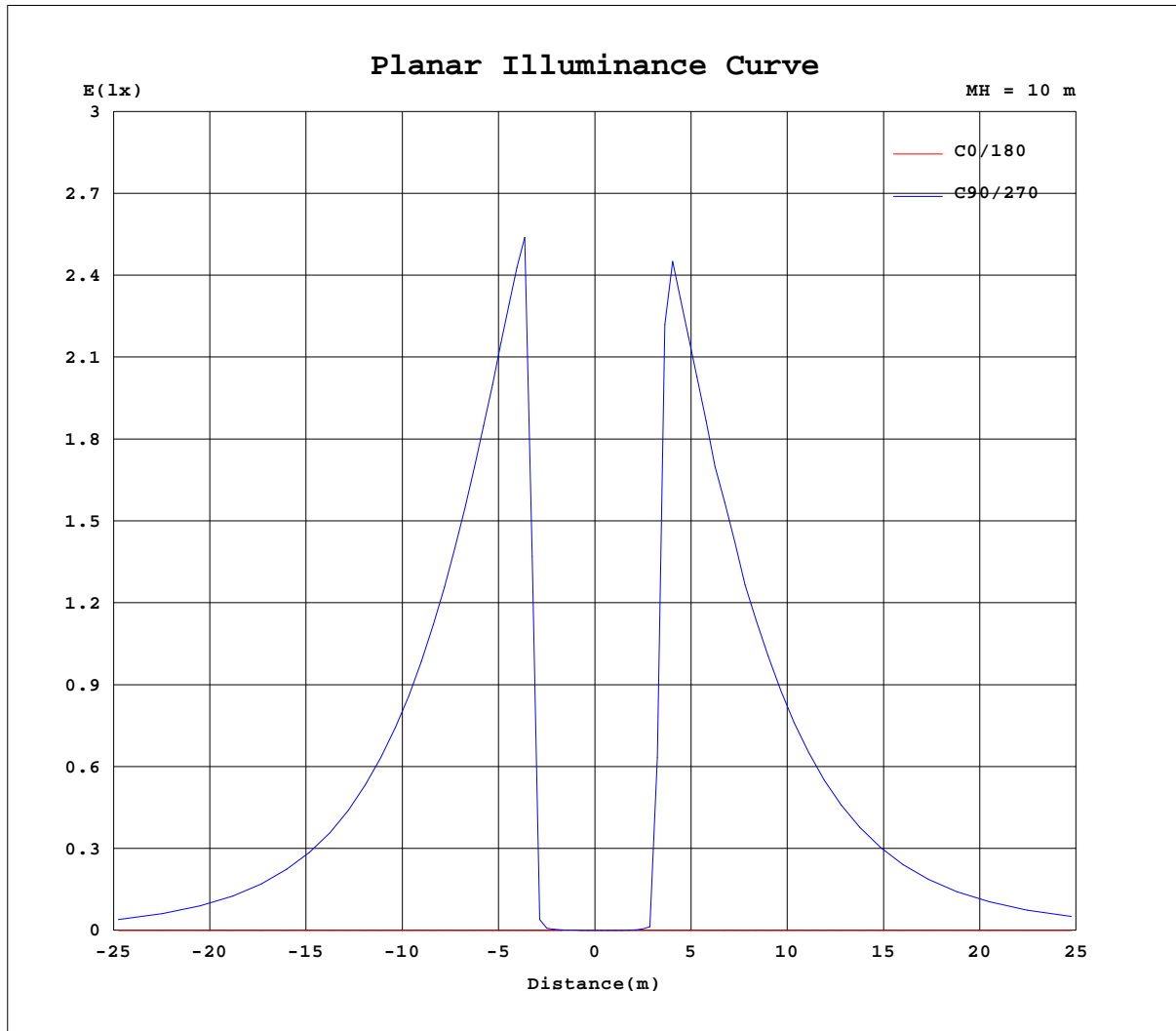
AvgL	cd/m2
L_0~180(65)av	3
L_0~180(75)av	4
L_0~180(85)av	12
L_90~270(65)av	2584
L_90~270(75)av	1584
L_90~270(85)av	498
L_45(65)av	2731
L_45(75)av	1632
L_45(85)av	294

Standard: GB/T 29293-2012

C Range: 0 - 360DEG
 C Interval: 10.0DEG
 Test Speed: HIGH
 Temperature:25.3DEG
 Operators:LQL
 Test Date:24 August 2022

g Range: 0 - 180DEG
 g Interval: 2.0DEG
 Test System:EVERFINE GO-2000B_V1 SYSTEM V2.0.403
 Humidity:65.0%
 Test Distance:10.365m [K=1.0000]
 Remarks: BME LNTC10W500LR

Planar Illuminance Curve



C Range: 0 - 360DEG
 C Interval: 10.0DEG
 Test Speed: HIGH
 Temperature: 25.3DEG
 Operators: LQL
 Test Date: 24 August 2022

Page Range: 0 - 180DEG
 Interval: 2.0DEG
 Test System: EVERFINE GO-2000B_V1 SYSTEM V2.0.403
 Humidity: 65.0%
 Test Distance: 10.365m [K=1.0000]
 Remarks: BME LNTC10W500LR

LUMINOUS DISTRIBUTION INTENSITY DATA

Test:U:230.65V I:0.0410A P:9.1673W PF:0.9687 Freq:49.99Hz Lamp Flux:492.577x1 lm		
NAME: Montana 7.5W LED outdoor wall light	TYPE:	WEIGHT:
SPEC.:	DIM.:	SERIAL No.:
MFR.: CG LIGHTING	SUR.:	Shielding Angle:

Table--1

UNIT: cd

C(DEG) g (DEG)	0	10	20	30	40	50	60	70	80	90	100	110	120	130	140	150	160	170	180
0	0.12	0.18	0.18	0.17	0.16	0.13	0.07	0.04	0.04	0.03	0.03	0.04	0.07	0.13	0.15	0.15	0.16	0.15	0.12
5	0.12	0.18	0.16	0.20	0.16	0.18	0.06	0.08	0.04	0.09	0.04	0.09	0.10	0.17	0.15	0.18	0.15	0.17	0.12
10	0.12	0.18	0.18	0.29	0.27	0.33	0.24	0.31	0.24	0.30	0.24	0.32	0.32	0.35	0.24	0.27	0.15	0.16	0.12
15	0.12	0.20	0.22	0.38	0.46	0.60	0.64	0.78	0.84	0.93	1.00	1.01	0.90	0.70	0.44	0.38	0.21	0.18	0.12
20	0.12	0.23	0.34	0.65	0.98	2.24	113	247	301	306	301	245	112	2.54	1.36	0.72	0.36	0.21	0.12
25	0.11	0.27	0.46	0.96	3.11	226	302	302	301	301	301	302	302	229	3.63	1.30	0.46	0.25	0.12
30	0.09	0.33	0.68	2.53	283	285	286	285	284	285	285	285	284	283	282	2.38	0.78	0.33	0.13
35	0.09	0.39	0.82	7.28	273	272	274	273	271	271	271	272	271	272	269	3.05	0.92	0.39	0.13
40	0.09	0.50	1.08	5.26	248	250	250	250	250	249	249	249	248	247	245	3.05	1.29	0.52	0.13
45	0.09	0.57	1.26	4.38	231	233	233	232	231	231	231	231	230	230	226	2.96	1.42	0.60	0.13
50	0.09	0.67	1.36	3.44	201	201	203	204	200	201	199	200	200	199	197	2.71	1.51	0.72	0.13
55	0.09	0.72	1.36	2.95	179	181	180	180	178	177	176	176	176	176	173	2.55	1.52	0.82	0.13
60	0.09	0.80	1.35	2.40	142	144	142	140	138	137	136	137	137	137	136	2.23	1.44	0.84	0.13
65	0.09	0.80	1.31	2.07	115	116	114	113	109	108	107	108	108	109	108	1.98	1.38	0.83	0.13
70	0.08	0.74	1.23	1.56	72.6	72.1	68.4	65.7	62.9	63.1	62.5	64.5	64.4	66.4	66.2	1.62	1.26	0.80	0.13
75	0.08	0.70	1.19	1.48	43.2	42.8	39.6	37.8	35.4	35.8	35.8	38.0	38.6	40.9	40.6	1.51	1.20	0.72	0.13
80	0.08	0.63	1.14	1.47	6.37	11.2	10.2	9.18	7.63	8.11	8.42	9.65	10.0	10.8	5.23	1.51	1.12	0.69	0.13
85	0.08	0.59	1.10	1.48	2.02	3.46	4.45	4.51	4.40	4.19	4.37	4.39	4.31	3.50	2.02	1.52	1.08	0.64	0.13
90	0.08	0.58	1.07	1.50	1.99	3.01	3.70	3.88	3.83	3.68	3.82	3.89	3.67	3.02	2.06	1.54	1.04	0.63	0.14
95	0.10	0.58	1.06	1.56	2.12	3.08	3.70	3.95	3.87	3.82	3.87	3.98	3.75	3.12	2.12	1.54	1.03	0.63	0.16
100	0.12	0.59	1.06	1.64	2.35	3.31	3.90	4.23	4.17	4.13	4.14	4.22	3.89	3.28	2.31	1.64	1.05	0.64	0.19
105	0.13	0.62	1.06	1.64	2.45	3.45	4.11	4.43	4.44	4.41	4.43	4.47	4.12	3.47	2.46	1.69	1.05	0.65	0.25
110	0.22	0.65	1.06	1.64	2.57	3.69	4.37	4.80	4.87	4.90	4.87	4.88	4.44	3.72	2.57	1.70	1.05	0.69	0.38
115	0.32	0.68	1.06	1.60	2.57	3.73	4.56	5.06	5.17	5.22	5.18	5.16	4.65	3.84	2.59	1.70	1.08	0.74	0.50
120	0.48	0.79	1.08	1.52	2.32	3.62	4.71	5.38	5.64	5.73	5.69	5.51	4.84	3.79	2.48	1.70	1.18	0.83	0.69
125	0.63	0.89	1.11	1.52	2.10	3.19	4.68	5.41	5.81	6.01	5.90	5.57	4.86	3.41	2.29	1.73	1.28	0.93	0.83
130	0.82	1.02	1.17	1.49	1.86	2.46	3.59	4.81	5.58	5.81	5.70	5.02	3.85	2.71	2.14	1.79	1.34	1.10	1.05
135	0.97	1.15	1.21	1.49	1.79	2.18	2.85	3.75	4.57	4.90	4.69	3.98	3.10	2.47	2.10	1.84	1.42	1.20	1.19
140	1.19	1.31	1.30	1.50	1.68	1.96	2.37	2.68	3.09	3.24	3.25	2.93	2.63	2.34	2.10	1.93	1.56	1.38	1.38
145	1.31	1.39	1.37	1.53	1.63	1.88	2.21	2.40	2.72	2.80	2.87	2.66	2.50	2.26	2.11	1.98	1.66	1.50	1.50
150	1.51	1.52	1.48	1.59	1.59	1.76	2.01	2.15	2.42	2.46	2.55	2.42	2.37	2.24	2.12	2.07	1.79	1.68	1.70
155	1.62	1.61	1.53	1.62	1.62	1.75	1.87	2.00	2.25	2.27	2.37	2.26	2.26	2.25	2.12	2.12	1.87	1.77	1.79
160	1.77	1.77	1.68	1.75	1.67	1.80	1.82	1.94	2.05	2.10	2.20	2.24	2.25	2.34	2.23	2.20	2.00	1.92	1.94
165	1.87	1.90	1.82	1.89	1.81	1.87	1.84	1.98	2.04	2.18	2.22	2.37	2.37	2.42	2.29	2.25	2.07	2.03	2.05
170	2.10	2.11	2.04	2.10	2.01	2.07	2.06	2.24	2.34	2.47	2.46	2.47	2.48	2.44	2.37	2.29	2.23	2.18	2.22
175	2.23	2.25	2.14	2.21	2.14	2.22	2.22	2.40	2.43	2.45	2.47	2.46	2.49	2.38	2.37	2.32	2.26	2.26	2.30
180	2.27	2.29	2.26	2.26	2.24	2.34	2.36	2.39	2.43	2.43	2.46	2.46	2.44	2.38	2.34	2.32	2.32	2.33	2.33

C Range: 0 - 360DEG
 C Interval: 10.0DEG
 Test Speed: HIGH
 Temperature:25.3DEG
 Operators:LQL
 Test Date:24 August 2022

g Range: 0 - 180DEG
 Interval: 2.0DEG
 Test System:EVERFINE GO-2000B_V1 SYSTEM V2.0.403
 Humidity:65.0%
 Test Distance:10.365m [K=1.0000]
 Remarks: BME LNTC10W500LR

LUMINOUS DISTRIBUTION INTENSITY DATA

Test:U:230.65V I:0.0410A P:9.1673W PF:0.9687 Freq:49.99Hz Lamp Flux:492.577x1 lm		
NAME: Montana 7.5W LED outdoor wall light	TYPE:	WEIGHT:
SPEC.:	DIM.:	SERIAL No.:
MFR.: CG LIGHTING	SUR.:	Shielding Angle:

Table--2

UNIT: cd

C(DEG) g (DEG)	190	200	210	220	230	240	250	260	270	280	290	300	310	320	330	340	350		
0	0.18	0.18	0.17	0.16	0.13	0.07	0.04	0.04	0.03	0.03	0.04	0.07	0.13	0.15	0.15	0.16	0.15		
5	0.16	0.17	0.15	0.18	0.13	0.12	0.02	0.09	0.03	0.07	0.04	0.11	0.13	0.19	0.15	0.18	0.15		
10	0.16	0.21	0.21	0.30	0.25	0.31	0.22	0.30	0.22	0.28	0.21	0.29	0.24	0.30	0.22	0.22	0.15		
15	0.16	0.25	0.29	0.46	0.47	0.63	0.67	0.79	0.71	0.76	0.67	0.61	0.45	0.47	0.34	0.27	0.15		
20	0.16	0.38	0.53	1.00	1.61	14.2	150	229	268	240	171	32.9	1.68	1.00	0.56	0.40	0.18		
25	0.18	0.48	0.86	1.84	131	296	304	305	304	304	304	302	171	2.20	0.87	0.50	0.22		
30	0.24	0.71	1.61	243	288	288	288	288	288	289	289	288	287	275	2.05	0.74	0.30		
35	0.33	0.90	2.09	273	273	274	275	275	275	277	276	277	276	274	3.27	0.89	0.34		
40	0.43	1.21	2.39	248	252	253	252	254	252	255	254	253	254	251	3.30	1.17	0.44		
45	0.49	1.41	2.39	232	234	236	235	239	237	238	238	237	236	235	3.27	1.34	0.53		
50	0.62	1.55	2.38	202	206	209	207	209	208	210	209	209	208	205	3.16	1.41	0.69		
55	0.70	1.53	2.27	180	183	184	186	187	187	187	187	188	185	183	3.02	1.39	0.73		
60	0.83	1.47	2.10	143	144	150	149	151	151	152	151	152	149	148	2.72	1.33	0.82		
65	0.82	1.40	1.96	115	117	121	123	125	125	127	126	126	124	122	2.46	1.32	0.83		
70	0.83	1.28	1.74	74.0	75.9	80.4	82.0	84.2	84.6	85.9	85.6	85.8	84.1	82.8	1.82	1.28	0.84		
75	0.80	1.22	1.64	43.8	50.4	54.5	55.5	58.1	58.4	59.8	58.9	59.4	57.2	54.9	1.61	1.18	0.80		
80	0.75	1.17	1.56	7.04	17.4	20.4	21.1	23.2	22.5	23.6	22.6	22.3	19.8	13.9	1.53	1.15	0.75		
85	0.72	1.12	1.56	2.04	3.97	5.48	5.66	6.05	5.81	6.38	6.33	6.51	4.82	2.07	1.52	1.14	0.74		
90	0.69	1.12	1.55	2.15	2.95	3.70	3.97	3.88	3.76	3.87	3.97	3.72	3.07	2.15	1.53	1.14	0.71		
95	0.67	1.14	1.56	2.24	3.08	3.79	3.97	3.98	3.77	3.96	3.92	3.78	3.13	2.28	1.60	1.14	0.69		
100	0.67	1.15	1.65	2.43	3.28	4.00	4.22	4.27	4.10	4.25	4.21	4.01	3.34	2.49	1.70	1.16	0.70		
105	0.69	1.17	1.72	2.57	3.47	4.19	4.47	4.54	4.39	4.51	4.42	4.20	3.51	2.61	1.78	1.16	0.70		
110	0.71	1.22	1.76	2.71	3.70	4.52	4.87	4.99	4.88	4.97	4.79	4.51	3.76	2.71	1.78	1.19	0.70		
115	0.80	1.24	1.76	2.68	3.83	4.72	5.16	5.31	5.22	5.29	5.05	4.69	3.85	2.69	1.78	1.20	0.73		
120	0.89	1.34	1.78	2.48	3.87	4.85	5.42	5.76	5.75	5.72	5.33	4.79	3.86	2.46	1.70	1.25	0.83		
125	0.99	1.40	1.77	2.33	3.52	4.82	5.55	5.89	5.92	5.81	5.42	4.74	3.48	2.21	1.67	1.28	0.93		
130	1.17	1.51	1.79	2.15	2.81	3.86	5.08	5.65	5.83	5.57	4.97	3.80	2.67	1.92	1.62	1.34	1.11		
135	1.28	1.59	1.85	2.15	2.55	3.07	4.03	4.77	4.95	4.67	3.91	2.94	2.34	1.80	1.59	1.41	1.19		
140	1.44	1.73	1.92	2.14	2.39	2.55	2.94	3.16	3.25	3.03	2.74	2.35	2.10	1.78	1.59	1.50	1.36		
145	1.54	1.81	1.98	2.14	2.32	2.40	2.64	2.71	2.76	2.58	2.43	2.13	1.96	1.69	1.59	1.55	1.43		
150	1.71	1.94	2.06	2.18	2.25	2.23	2.40	2.38	2.42	2.23	2.16	1.91	1.84	1.70	1.64	1.66	1.60		
155	1.81	2.01	2.11	2.24	2.24	2.22	2.23	2.20	2.21	2.07	2.01	1.84	1.81	1.75	1.67	1.73	1.65		
160	1.96	2.12	2.17	2.32	2.28	2.29	2.17	2.13	2.06	2.01	1.93	1.88	1.81	1.85	1.77	1.85	1.80		
165	2.03	2.18	2.24	2.38	2.35	2.41	2.26	2.26	2.09	2.07	1.93	1.94	1.88	1.96	1.91	1.98	2.01		
170	2.17	2.26	2.24	2.37	2.39	2.46	2.46	2.46	2.41	2.38	2.20	2.17	2.09	2.15	2.11	2.16	2.12		
175	2.24	2.29	2.25	2.34	2.39	2.40	2.47	2.45	2.47	2.46	2.36	2.32	2.23	2.26	2.22	2.26	2.23		
180	2.27	2.29	2.26	2.26	2.35	2.36	2.44	2.44	2.45	2.45	2.47	2.44	2.37	2.33	2.29	2.32	2.32		

C Range: 0 - 360DEG
 C Interval: 10.0DEG
 Test Speed: HIGH
 Temperature:25.3DEG
 Operators:LQL
 Test Date:24 August 2022

g Range: 0 - 180DEG
 g Interval: 2.0DEG
 Test System:EVERFINE GO-2000B_V1 SYSTEM V2.0.403
 Humidity:65.0%
 Test Distance:10.365m [K=1.0000]
 Remarks: BME LNTC10W500LR