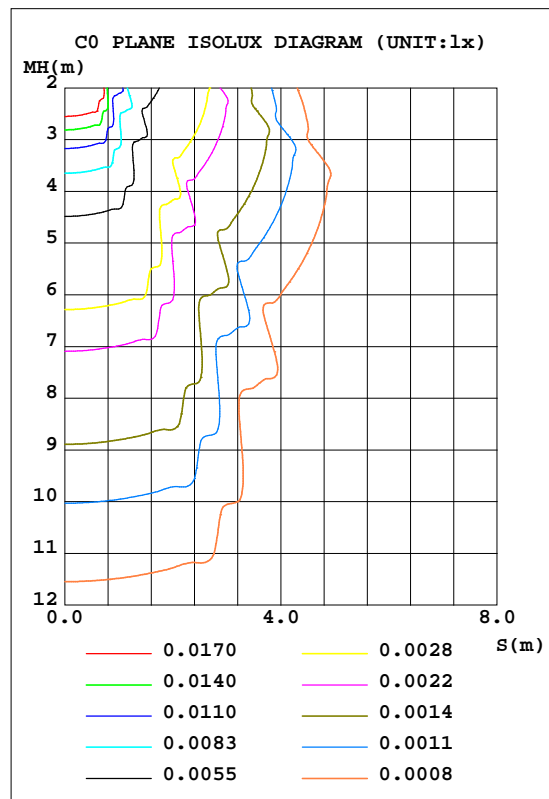
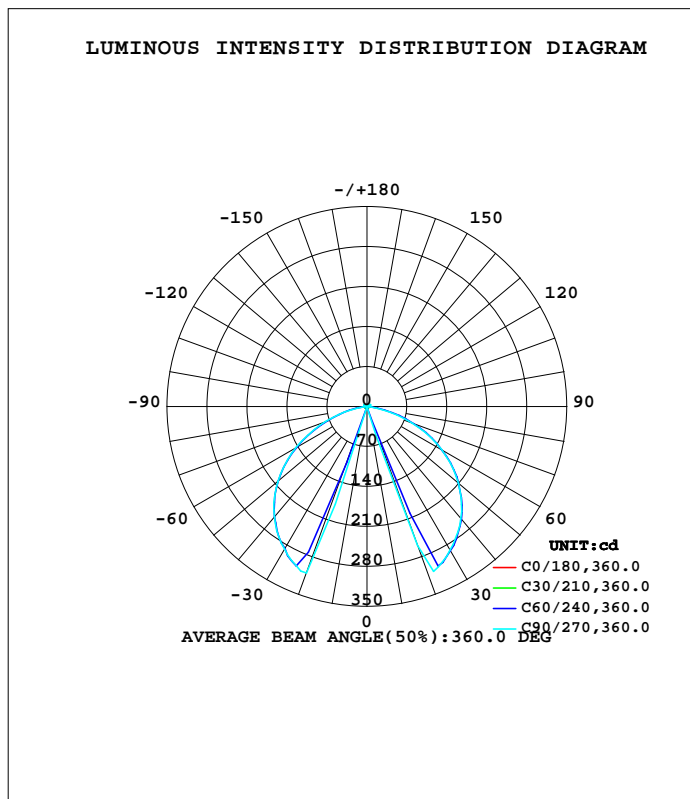


LUMINAIRE PHOTOMETRIC TEST REPORT

Test:U:230.61V I:0.0447A P:9.0330W PF:0.8748 Freq:49.99Hz Lamp Flux:503.782x1 lm		
NAME: Montana 7.5W LED outdoor wall light	TYPE:	WEIGHT:
SPEC.:	DIM.:	SERIAL No.:
MFR.: CG LIGHTING	SUR.:	Shielding Angle:

DATA OF LAMP		PHOTOMETRIC DATA				Eff: 55.77 lm/W
MODEL	1437B2-Q5	I _{max} (cd)	311.6	S/MH(C0/180)	0.43	
NOMINAL POWER(W)		LOR(%)	100.0	S/MH(C90/270)	0.07	
RATED VOLTAGE(V)	230	TOTAL FLUX(lm)	503.78	h UP, DN(C0-180)	1.6, 48.3	
NOMINAL FLUX(lm)	503.782	CIE CLASS	DIRECT	h UP, DN(C180-360)	1.7, 48.4	
LAMPS INSIDE	1	h up(%)	3.3	CIBSE SHR NOM	0.00	
TEST VOLTAGE(V)	230	h down(%)	96.7	CIBSE SHR MAX	1.00	



C Range: 0 - 360DEG
 C Interval: 10.0DEG
 Test Speed: HIGH
 Temperature:25.3DEG
 Operators:LQL
 Test Date:18 October 2022

Range: 0 - 180DEG
 Interval: 2.0DEG
 Test System:EVERFINE GO-2000B_V1 SYSTEM V2.0.403
 Humidity:65.0%
 Test Distance:10.365m [K=1.0000]
 Remarks: ZG1BME30KH0 MINI-10-500

ZONAL FLUX DIAGRAM

ZONAL FLUX DIAGRAM:

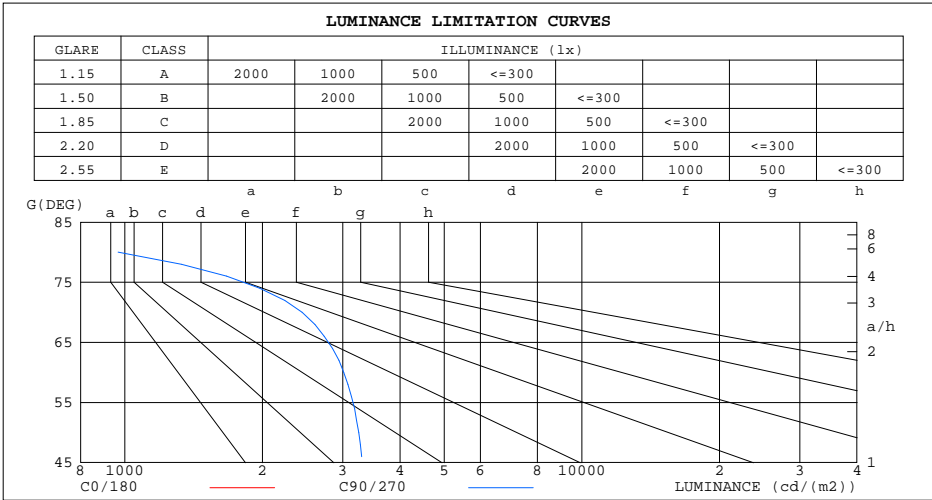
g	C0	C45	C90	C135	C180	C225	C270	C315	g	F zone	F total	%lum,lamp
10	0.1106	0.2361	0.2293	0.2287	0.0590	0.3208	0.2282	0.2693	0- 10	0.0131	0.0131	0.00,0.00
20	0.0812	1.160	259.1	1.438	0.0369	2.167	310.1	2.475	10- 20	4.360	4.373	0.87,0.87
30	0.0517	282.6	290.9	269.7	0.0369	285.0	288.8	289.5	20- 30	67.11	71.49	14.2,14.2
40	0.0516	256.0	256.1	251.4	0.0369	250.7	252.6	253.1	30- 40	104.8	176.3	35,35
50	0.0516	208.6	209.1	204.3	0.0369	202.2	204.0	206.1	40- 50	109.5	285.8	56.7,56.7
60	0.0443	150.8	150.7	145.7	0.0369	139.2	143.0	147.9	50- 60	97.36	383.1	76,76
70	0.0443	85.18	83.53	79.00	0.0369	71.14	76.47	81.39	60- 70	69.18	452.3	89.8,89.8
80	0.0369	12.66	16.80	6.808	0.0369	7.778	17.50	7.514	70- 80	30.64	482.9	95.9,95.9
90	0.0369	2.696	3.821	2.763	0.0517	2.811	3.902	2.843	80- 90	4.131	487.1	96.7,96.7
100	0.0369	2.785	4.198	2.847	0.1108	3.017	4.359	2.877	90-100	2.815	489.9	97.2,97.2
110	0.1621	3.113	4.928	3.201	0.2879	3.323	5.155	3.135	100-110	2.994	492.9	97.8,97.8
120	0.4495	3.028	5.769	3.216	0.5905	3.234	5.974	2.987	110-120	3.121	496.0	98.5,98.5
130	0.8186	2.220	5.981	2.463	0.9446	2.438	5.785	2.140	120-130	2.848	498.8	99,99
140	1.165	1.844	3.384	2.217	1.306	2.213	3.181	1.811	130-140	1.942	500.8	99.4,99.4
150	1.482	1.678	2.500	2.165	1.623	2.172	2.383	1.715	140-150	1.279	502.1	99.7,99.7
160	1.763	1.719	2.124	2.268	1.881	2.261	2.065	1.785	150-160	0.9084	503.0	99.8,99.8
170	2.087	2.010	2.478	2.360	2.176	2.357	2.463	2.113	160-170	0.5933	503.6	100,100
180	2.287	2.272	2.449	2.364	2.287	2.283	2.456	2.349	170-180	0.2194	503.8	100,100
DEG	LUMINOUS INTENSITY:cd									UNIT:lm		

C Range: 0 - 360DEG
 C Interval: 10.0DEG
 Test Speed: HIGH
 Temperature:25.3DEG
 Operators:LQL
 Test Date:18 October 2022

g Range: 0 - 180DEG
 Interval: 2.0DEG
 Test System:EVERFINE GO-2000B_V1 SYSTEM V2.0.403
 Humidity:65.0%
 Test Distance:10.365m [K=1.0000]
 Remarks: ZG1BME30KH0 MINI-10-500

LUMINANCE LIMITATION CURVES

Test:U:230.61V I:0.0447A P:9.0330W PF:0.8748 Freq:49.99Hz Lamp Flux:503.782x1 lm		
NAME: Montana 7.5W LED outdoor wall light	TYPE:	WEIGHT:
SPEC.:	DIM.:	SERIAL No.:
MFR.: CG LIGHTING	SUR.:	Shielding Angle:



LUMINANCE cd/(m2)		
G(DEG)	C0/180	C90/270
85	4	557
80	2	967
75	1	2104
70	1	2442
65	1	2957
60	1	3015
55	1	3261
50	1	3253
45	1	3372

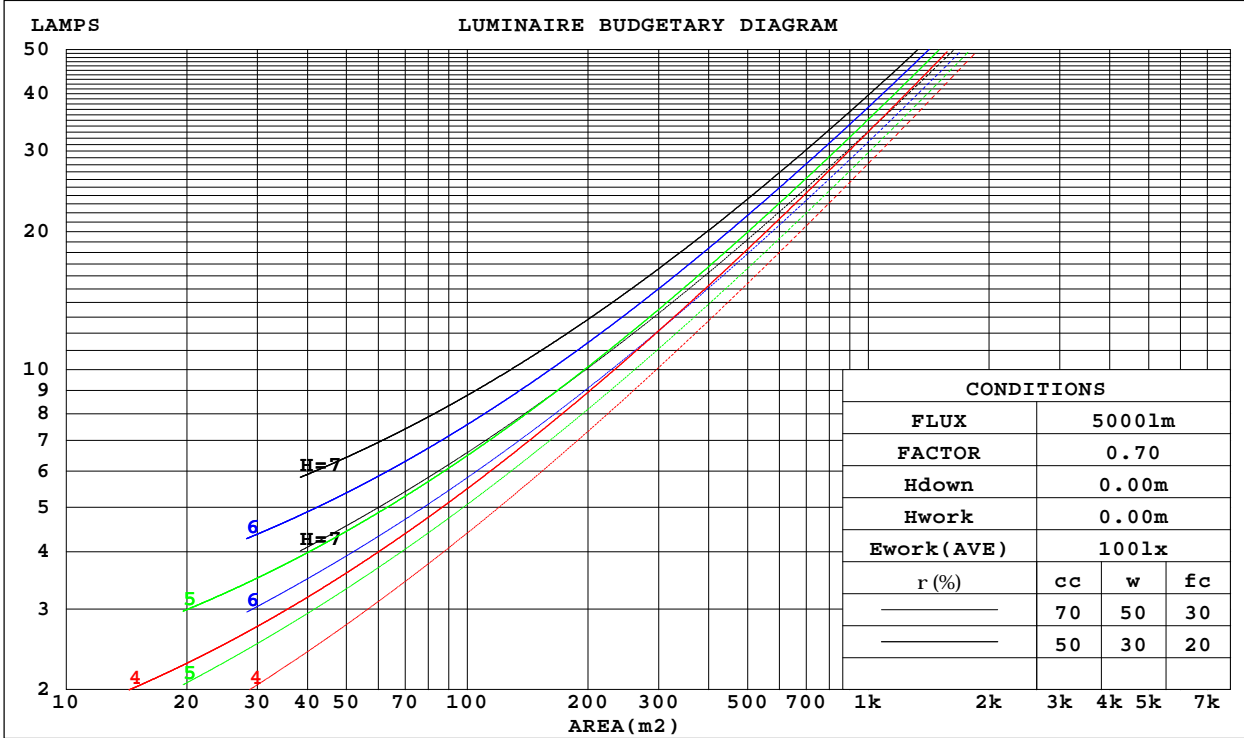
C Range: 0 - 360DEG
 C Interval: 10.0DEG
 Test Speed: HIGH
 Temperature:25.3DEG
 Operators:LQL
 Test Date:18 October 2022

G Range: 0 - 180DEG
 G Interval: 2.0DEG
 Test System:EVERFINE GO-2000B_V1 SYSTEM V2.0.403
 Humidity:65.0%
 Test Distance:10.365m [K=1.0000]
 Remarks: ZG1BME30KH0 MINI-10-500

CU AND LUMINAIRE BUDGETARY ESTIMATE DIAGRAM

Test:U:230.61V I:0.0447A P:9.0330W PF:0.8748 Freq:49.99Hz Lamp Flux:503.782x1 lm		
NAME: Montana 7.5W LED outdoor wall light	TYPE:	WEIGHT:
SPEC.:	DIM.:	SERIAL No.:
MFR.: CG LIGHTING	SUR.:	Shielding Angle:

r _{cc}	80%			70%			50%			30%			10%			0
r _w	50%	30%	10%	50%	30%	10%	50%	30%	10%	50%	30%	10%	50%	30%	10%	0
r _{fc}	20%			20%			20%			20%			20%			0
RCR	RCR:Room Cavity Ratio						Coefficients of Utilization(CU)									
0.0	1.18	1.18	1.18	1.15	1.15	1.15	1.09	1.09	1.09	1.04	1.04	1.04	.99	.99	.99	.97
1.0	1.03	.98	.95	1.00	.96	.93	.95	.92	.89	.91	.88	.86	.87	.85	.83	.80
2.0	.88	.81	.75	.86	.80	.74	.82	.77	.72	.78	.74	.70	.75	.71	.68	.65
3.0	.76	.68	.61	.74	.66	.60	.71	.64	.58	.68	.62	.57	.65	.60	.56	.53
4.0	.66	.57	.50	.65	.56	.49	.62	.54	.48	.59	.52	.47	.56	.51	.46	.44
5.0	.58	.48	.41	.57	.48	.41	.54	.46	.40	.52	.45	.39	.49	.43	.39	.36
6.0	.51	.42	.35	.50	.41	.34	.48	.40	.34	.46	.39	.33	.44	.37	.33	.30
7.0	.45	.36	.29	.44	.35	.29	.42	.34	.29	.41	.34	.28	.39	.33	.28	.26
8.0	.41	.31	.25	.40	.31	.25	.38	.30	.25	.36	.29	.24	.35	.29	.24	.22
9.0	.36	.28	.22	.36	.27	.21	.34	.27	.21	.33	.26	.21	.32	.25	.21	.19
10.0	.33	.24	.19	.32	.24	.19	.31	.24	.18	.30	.23	.18	.29	.22	.18	.16



C Range: 0 - 360DEG
 C Interval: 10.0DEG
 Test Speed: HIGH
 Temperature:25.3DEG
 Operators:LQL
 Test Date:18 October 2022

Range: 0 - 180DEG
 Interval: 2.0DEG
 Test System:EVERFINE GO-2000B_V1 SYSTEM V2.0.403
 Humidity:65.0%
 Test Distance:10.365m [K=1.0000]
 Remarks: ZG1BME30KH0 MINI-10-500

WEC AND CCEC

Test:U:230.61V I:0.0447A P:9.0330W PF:0.8748 Freq:49.99Hz Lamp Flux:503.782x1 lm		
NAME: Montana 7.5W LED outdoor wall light	TYPE:	WEIGHT:
SPEC.:	DIM.:	SERIAL No.:
MFR.: CG LIGHTING	SUR.:	Shielding Angle:

rcc	80%			70%			50%			30%			10%			0
rw	50%	30%	10%	50%	30%	10%	50%	30%	10%	50%	30%	10%	50%	30%	10%	0
rfc	20%			20%			20%			20%			20%			0
RCR	RCR:Room Cavity Ratio						Wall Exitance Coefficients(WEC)									
0.0																
1.0	.314	.179	.057	.306	.175	.056	.291	.167	.053	.277	.160	.051	.264	.153	.049	
2.0	.304	.166	.051	.296	.163	.050	.283	.157	.049	.270	.152	.047	.259	.146	.046	
3.0	.284	.151	.045	.278	.149	.045	.266	.144	.044	.255	.139	.043	.244	.135	.042	
4.0	.264	.137	.040	.259	.135	.040	.248	.131	.039	.238	.128	.038	.228	.124	.038	
5.0	.245	.125	.036	.240	.123	.036	.230	.120	.035	.221	.117	.035	.213	.114	.034	
6.0	.228	.114	.033	.223	.113	.032	.215	.110	.032	.206	.107	.032	.199	.105	.031	
7.0	.213	.105	.030	.208	.104	.030	.200	.101	.029	.193	.099	.029	.186	.097	.028	
8.0	.199	.097	.027	.195	.096	.027	.188	.094	.027	.181	.092	.026	.174	.090	.026	
9.0	.186	.090	.025	.183	.089	.025	.176	.087	.025	.170	.085	.024	.164	.083	.024	
10.0	.175	.084	.023	.172	.083	.023	.166	.081	.023	.160	.080	.023	.155	.078	.022	

rcc	80%			70%			50%			30%			10%			0
rw	50%	30%	10%	50%	30%	10%	50%	30%	10%	50%	30%	10%	50%	30%	10%	0
rfc	20%			20%			20%			20%			20%			0
RCR	RCR:Room Cavity Ratio						Ceiling Cavity Exitance Coefficients(CCEC)									
0.0	.216	.216	.216	.184	.184	.184	.126	.126	.126	.072	.072	.072	.023	.023	.023	
1.0	.206	.182	.159	.176	.156	.137	.121	.107	.095	.069	.062	.055	.022	.020	.018	
2.0	.199	.158	.122	.171	.136	.106	.117	.094	.074	.068	.055	.043	.022	.018	.014	
3.0	.193	.140	.098	.166	.121	.085	.114	.084	.060	.066	.049	.035	.021	.016	.012	
4.0	.187	.127	.082	.160	.110	.071	.110	.077	.050	.064	.045	.030	.020	.015	.010	
5.0	.180	.117	.071	.154	.101	.062	.106	.071	.044	.062	.042	.026	.020	.014	.009	
6.0	.173	.109	.063	.149	.095	.055	.103	.066	.039	.060	.039	.023	.019	.013	.008	
7.0	.167	.103	.057	.143	.089	.050	.099	.062	.035	.058	.037	.021	.019	.012	.007	
8.0	.160	.097	.053	.138	.084	.046	.096	.059	.033	.056	.035	.020	.018	.011	.006	
9.0	.154	.092	.050	.133	.080	.044	.092	.056	.031	.054	.033	.018	.017	.011	.006	
10.0	.149	.088	.047	.128	.076	.041	.089	.054	.029	.052	.032	.018	.017	.010	.006	

C Range: 0 - 360DEG
 C Interval: 10.0DEG
 Test Speed: HIGH
 Temperature:25.3DEG
 Operators:LQL
 Test Date:18 October 2022

g Range: 0 - 180DEG
 g Interval: 2.0DEG
 Test System:EVERFINE GO-2000B_V1 SYSTEM V2.0.403
 Humidity:65.0%
 Test Distance:10.365m [K=1.0000]
 Remarks: ZG1BME30KH0 MINI-10-500

UGR(Unified Glare Rating) Table

Test:U:230.61V I:0.0447A P:9.0330W PF:0.8748 Freq:49.99Hz Lamp Flux:503.782x1 lm										
NAME: Montana 7.5W LED outdoor wall light					TYPE:			WEIGHT:		
SPEC.:					DIM.:			SERIAL No.:		
MFR.: CG LIGHTING					SUR.:			Shielding Angle:		
ceiling/cavity	0.7	0.7	0.5	0.5	0.3	0.7	0.7	0.5	0.5	0.3
walls	0.5	0.3	0.5	0.3	0.3	0.5	0.3	0.5	0.3	0.3
working plane	0.2	0.2	0.2	0.2	0.2	0.2	0.2	0.2	0.2	0.2
Room dimensions	Viewed crosswise					Viewed endwise				
x = 2H y = 2H	12.6	14.2	12.9	14.5	14.8	21.5	23.1	21.8	23.4	23.6
3H	12.4	13.8	12.7	14.1	14.5	22.8	24.2	23.1	24.5	24.9
4H	12.3	13.7	12.6	14.0	14.3	23.1	24.5	23.5	24.8	25.2
6H	12.1	13.4	12.5	13.8	14.1	23.2	24.5	23.6	24.8	25.2
8H	12.1	13.3	12.5	13.7	14.1	23.1	24.4	23.5	24.7	25.1
12H	12.0	13.2	12.4	13.6	14.0	23.1	24.3	23.5	24.6	25.0
4H 2H	17.0	18.4	17.4	18.7	19.1	21.9	23.3	22.2	23.6	23.9
3H	17.1	18.3	17.6	18.7	19.1	23.4	24.6	23.8	24.9	25.3
4H	17.0	18.1	17.5	18.5	18.9	23.8	24.9	24.3	25.3	25.7
6H	16.9	17.9	17.4	18.3	18.8	24.0	24.9	24.4	25.3	25.8
8H	16.9	17.8	17.4	18.2	18.7	23.9	24.8	24.4	25.2	25.7
12H	16.8	17.7	17.3	18.1	18.6	23.9	24.7	24.4	25.2	25.6
8H 4H	18.2	19.1	18.7	19.6	20.0	23.9	24.8	24.4	25.2	25.7
6H	18.2	18.9	18.6	19.4	19.9	24.1	24.8	24.6	25.3	25.8
8H	18.1	18.8	18.6	19.2	19.8	24.1	24.7	24.6	25.2	25.7
12H	18.1	18.6	18.6	19.1	19.7	24.0	24.6	24.6	25.1	25.6
12H 4H	18.3	19.1	18.7	19.5	20.0	23.8	24.7	24.3	25.1	25.6
6H	18.2	18.8	18.7	19.3	19.8	24.0	24.7	24.5	25.2	25.7
8H	18.2	18.7	18.7	19.2	19.8	24.0	24.6	24.6	25.1	25.6
Variations with the observer position at spacings:										
S = 1.0H	+ 0.6 / - 1.0					+ 0.2 / - 0.2				
1.5H	+ 1.7 / - 1.9					+ 0.3 / - 0.6				
2.0H	+ 3.2 / - 5.6					+ 0.3 / - 0.4				

CIE Pub.117, 503.8 lm Total Lamp Luminous Flux Correct (8log(F/F0) = -2.4)

C Range: 0 - 360DEG
 C Interval: 10.0DEG
 Test Speed: HIGH
 Temperature:25.3DEG
 Operators:LQL
 Test Date:18 October 2022

g Range: 0 - 180DEG
 g Interval: 2.0DEG
 Test System:EVERFINE GO-2000B_V1 SYSTEM V2.0.403
 Humidity:65.0%
 Test Distance:10.365m [K=1.0000]
 Remarks: ZG1BME30KH0 MINI-10-500

UTILIZATION FACTORS TABLE

Test:U:230.61V I:0.0447A P:9.0330W PF:0.8748 Freq:49.99Hz Lamp Flux:503.782x1 lm		
NAME: Montana 7.5W LED outdoor wall light	TYPE:	WEIGHT:
SPEC.:	DIM.:	SERIAL No.:
MFR.: CG LIGHTING	SUR.:	Shielding Angle:

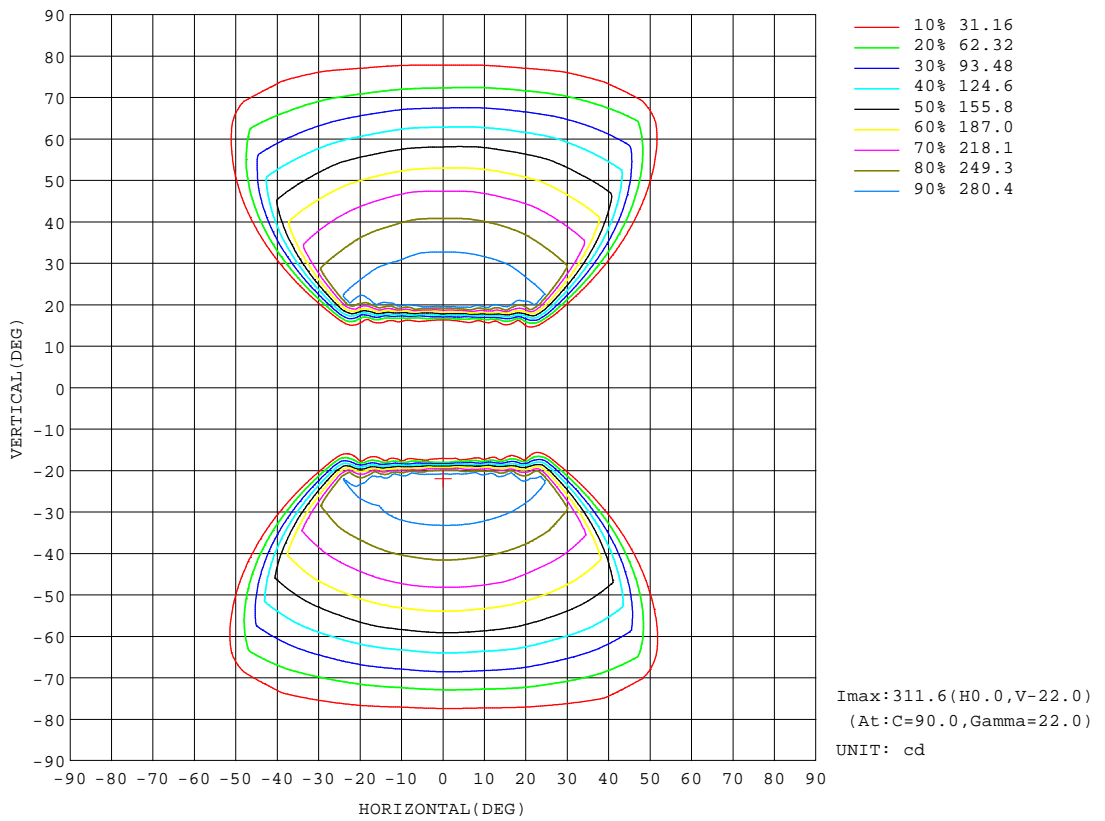
REFLECTANCE										
Ceiling	0.8	0.8	0.8	0.7	0.7	0.7	0.5	0.5	0.5	0
Walls	0.7	0.5	0.3	0.7	0.5	0.3	0.7	0.5	0.3	0
Working plane	0.2	0.2	0.2	0.2	0.2	0.2	0.2	0.2	0.2	0
ROOM INDEX	UTILIZATION FACTORS(PERCENT) k(RI) x RCR = 5									
k = 0.60	51	39	31	50	38	31	49	38	31	24
0.80	62	49	41	61	49	41	59	48	41	33
1.00	72	60	52	70	59	51	68	60	51	43
1.25	79	68	60	78	67	60	75	66	59	51
1.50	85	74	67	83	73	66	80	71	65	56
2.00	93	84	77	90	82	76	87	80	74	65
2.50	97	89	82	95	87	81	90	84	79	70
3.00	101	93	87	98	92	86	93	88	84	74
4.00	105	99	94	102	97	92	97	93	89	79
5.00	107	102	98	105	100	96	99	96	93	82
ROOM INDEX	UF(total)									Direct
According to DIN EN 13032-2 2004			Suspended				SHRNOM = 1.25			

C Range: 0 - 360DEG
 C Interval: 10.0DEG
 Test Speed: HIGH
 Temperature:25.3DEG
 Operators:LQL
 Test Date:18 October 2022

g Range: 0 - 180DEG
 Interval: 2.0DEG
 Test System:EVERFINE GO-2000B_V1 SYSTEM V2.0.403
 Humidity:65.0%
 Test Distance:10.365m [K=1.0000]
 Remarks: ZG1BME30KH0 MINI-10-500

ISOCANDELA DIAGRAM

Test:U:230.61V I:0.0447A P:9.0330W PF:0.8748 Freq:49.99Hz Lamp Flux:503.782x1 lm		
NAME: Montana 7.5W LED outdoor wall light	TYPE:	WEIGHT:
SPEC.:	DIM.:	SERIAL No.:
MFR.: CG LIGHTING	SUR.:	Shielding Angle:

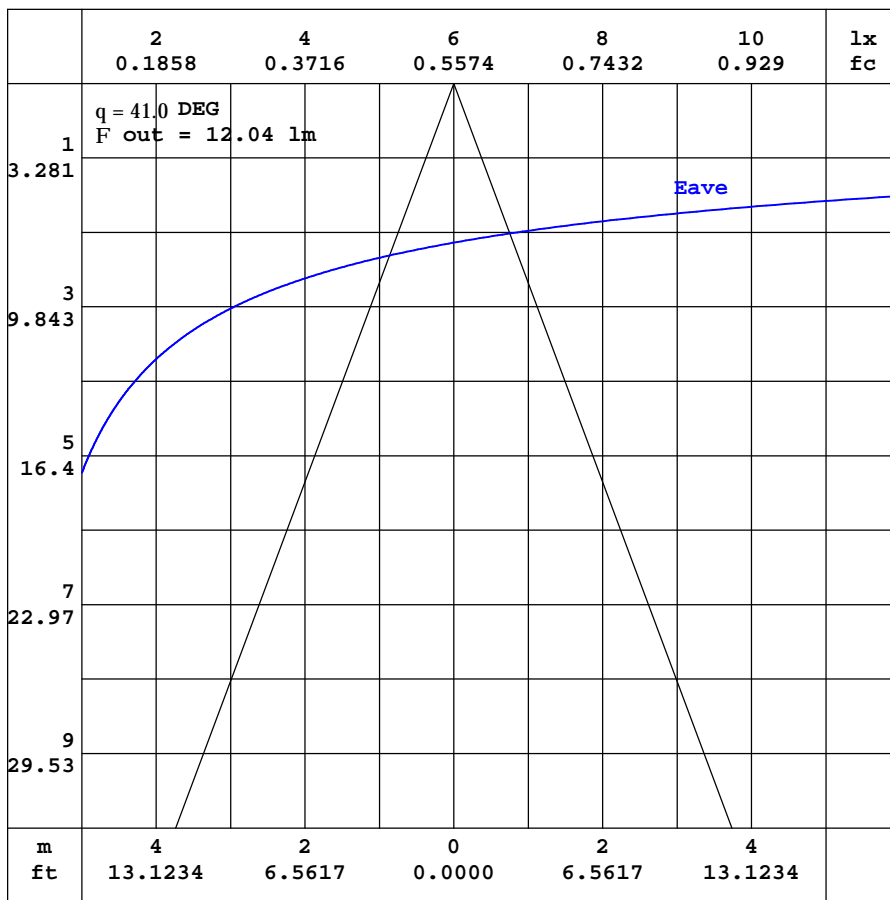


C Range: 0 - 360DEG
C Interval: 10.0DEG
Test Speed: HIGH
Temperature:25.3DEG
Operators:LQL
Test Date:18 October 2022

Range: 0 - 180DEG
Interval: 2.0DEG
Test System:EVERFINE GO-2000B_V1 SYSTEM V2.0.403
Humidity:65.0%
Test Distance:10.365m [K=1.0000]
Remarks: ZG1BME30KH0 MINI-10-500

AAI CURVES

Test:U:230.61V I:0.0447A P:9.0330W PF:0.8748 Freq:49.99Hz Lamp Flux:503.782x1 lm		
NAME: Montana 7.5W LED outdoor wall light	TYPE:	WEIGHT:
SPEC.:	DIM.:	SERIAL No.:
MFR.: CG LIGHTING	SUR.:	Shielding Angle:



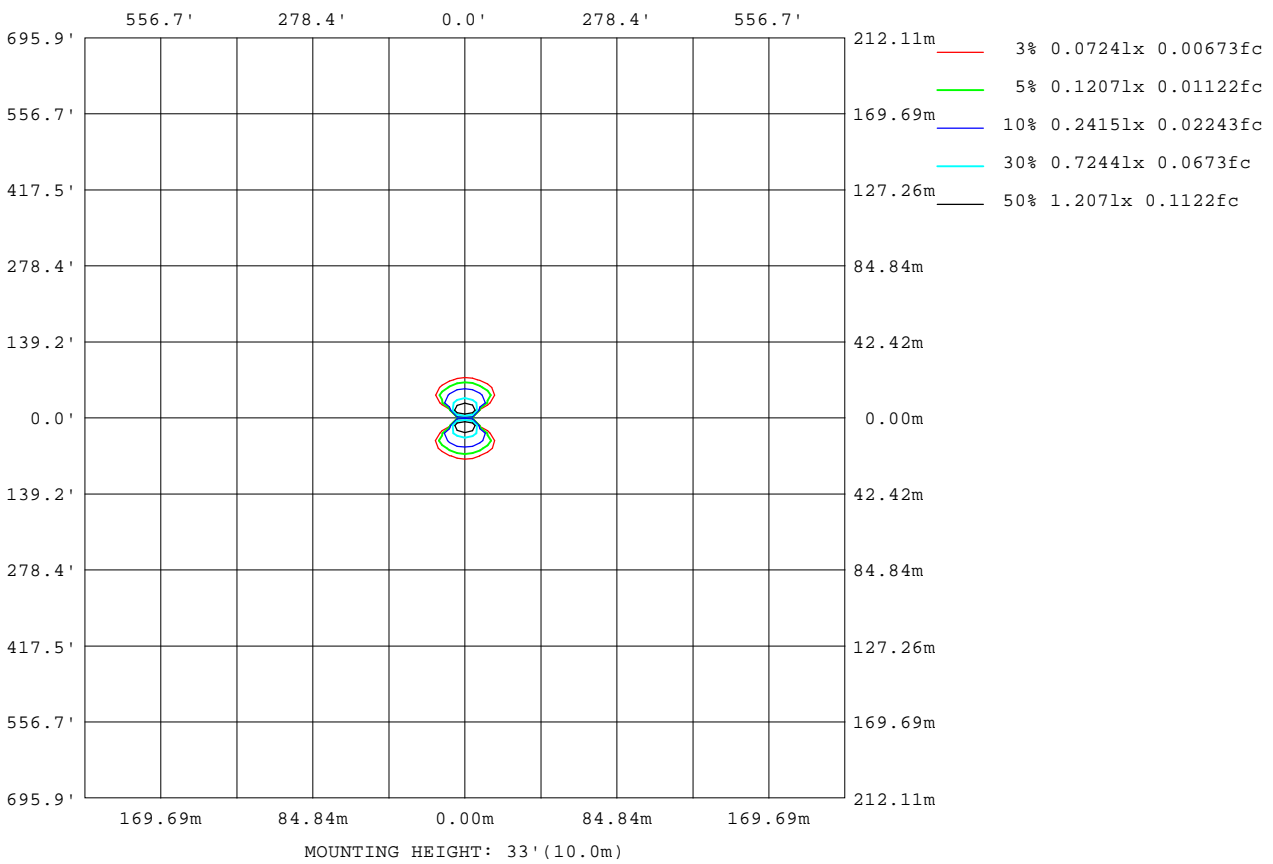
Note:The Curves indicate the illuminated area and the average illumination when the luminaire is at different distance.

C Range: 0 - 360DEG
 C Interval: 10.0DEG
 Test Speed: HIGH
 Temperature:25.3DEG
 Operators:LQL
 Test Date:18 October 2022

Range: 0 - 180DEG
 Interval: 2.0DEG
 Test System:EVERFINE GO-2000B_V1 SYSTEM V2.0.403
 Humidity:65.0%
 Test Distance:10.365m [K=1.0000]
 Remarks: ZG1BME30KH0 MINI-10-500

ISOLUX DIAGRAM

Test:U:230.61V I:0.0447A P:9.0330W PF:0.8748 Freq:49.99Hz Lamp Flux:503.782x1 lm		
NAME: Montana 7.5W LED outdoor wall light	TYPE:	WEIGHT:
SPEC.:	DIM.:	SERIAL No.:
MFR.: CG LIGHTING	SUR.:	Shielding Angle:



C Range: 0 - 360DEG
 C Interval: 10.0DEG
 Test Speed: HIGH
 Temperature:25.3DEG
 Operators:LQL
 Test Date:18 October 2022

Range: 0 - 180DEG
 Interval: 2.0DEG
 Test System:EVERFINE GO-2000B_V1 SYSTEM V2.0.403
 Humidity:65.0%
 Test Distance:10.365m [K=1.0000]
 Remarks: ZG1BME30KH0 MINI-10-500

LED Avg.L Report

Test:U:230.61V I:0.0447A P:9.0330W PF:0.8748 Freq:49.99Hz Lamp Flux:503.782x1 lm		
NAME: Montana 7.5W LED outdoor wall light	TYPE:	WEIGHT:
SPEC.:	DIM.:	SERIAL No.:
MFR.: CG LIGHTING	SUR.:	Shielding Angle:

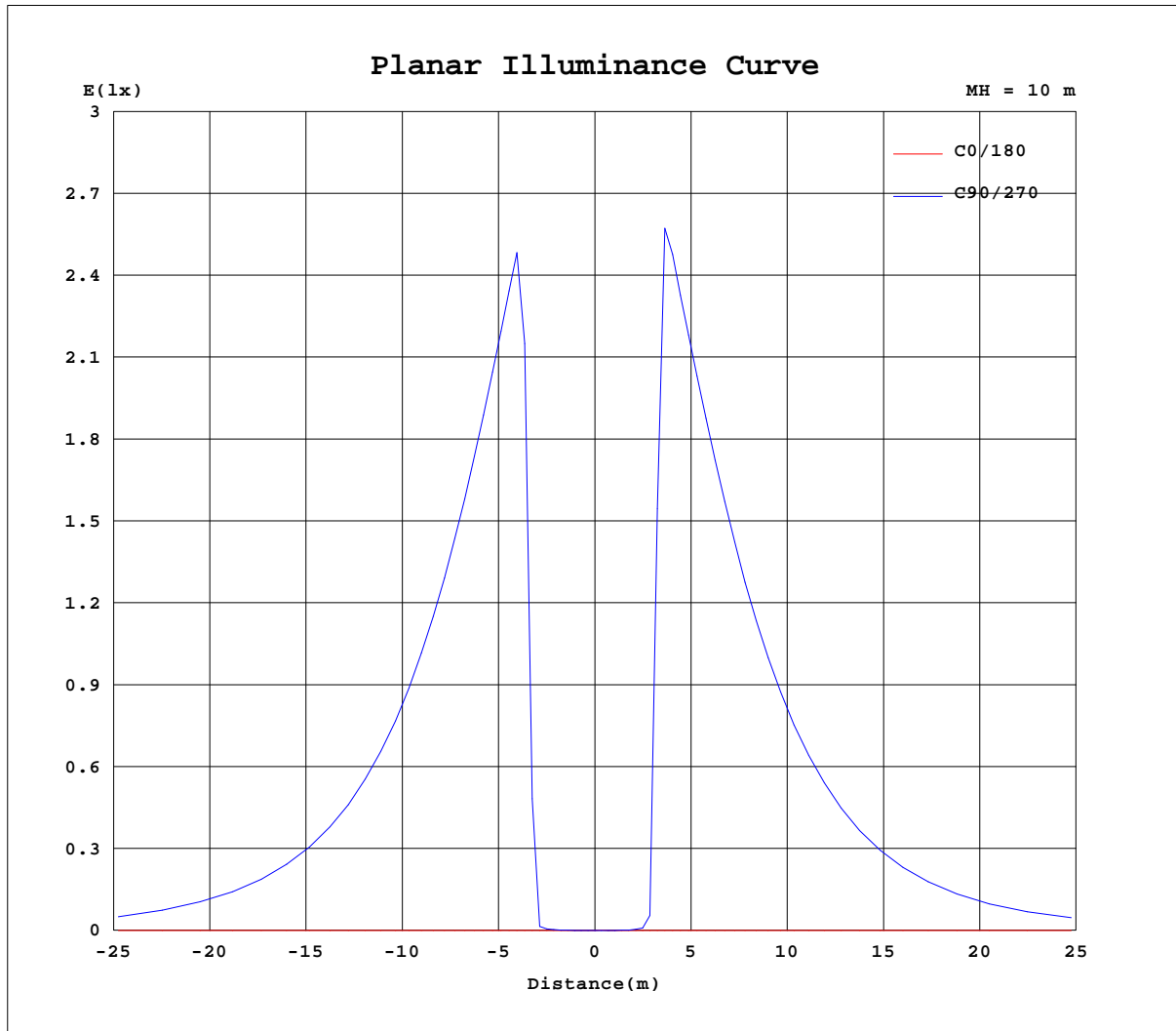
AvgL	cd/m2
L_0~180(65)av	1
L_0~180(75)av	1
L_0~180(85)av	5
L_90~270(65)av	2694
L_90~270(75)av	1806
L_90~270(85)av	503
L_45(65)av	2839
L_45(75)av	1872
L_45(85)av	316

Standard: GB/T 29293-2012

C Range: 0 - 360DEG
 C Interval: 10.0DEG
 Test Speed: HIGH
 Temperature:25.3DEG
 Operators:LQL
 Test Date:18 October 2022

g Range: 0 - 180DEG
 g Interval: 2.0DEG
 Test System:EVERFINE GO-2000B_V1 SYSTEM V2.0.403
 Humidity:65.0%
 Test Distance:10.365m [K=1.0000]
 Remarks: ZG1BME30KH0 MINI-10-500

Planar Illuminance Curve



C Range: 0 - 360DEG
 C Interval: 10.0DEG
 Test Speed: HIGH
 Temperature: 25.3DEG
 Operators: LQL
 Test Date: 18 October 2022

Page Range: 0 - 180DEG
 Interval: 2.0DEG
 Test System: EVERFINE GO-2000B_V1 SYSTEM V2.0.403
 Humidity: 65.0%
 Test Distance: 10.365m [K=1.0000]
 Remarks: ZG1BME30KH0 MINI-10-500

LUMINOUS DISTRIBUTION INTENSITY DATA

Test:U:230.61V I:0.0447A P:9.0330W PF:0.8748 Freq:49.99Hz Lamp Flux:503.782x1 lm		
NAME: Montana 7.5W LED outdoor wall light	TYPE:	WEIGHT:
SPEC.:	DIM.:	SERIAL No.:
MFR.: CG LIGHTING	SUR.:	Shielding Angle:

Table--1

UNIT: cd

C(DEG) g (DEG)	0	10	20	30	40	50	60	70	80	90	100	110	120	130	140	150	160	170	180
0	0.11	0.13	0.13	0.13	0.13	0.10	0.06	0.01	0.01	0.01	0.01	0.01	0.04	0.10	0.13	0.12	0.14	0.11	0.11
5	0.11	0.13	0.13	0.14	0.12	0.13	0.04	0.05	0.01	0.05	0.00	0.04	0.04	0.13	0.13	0.13	0.12	0.11	0.09
10	0.11	0.13	0.13	0.20	0.21	0.27	0.20	0.24	0.16	0.23	0.18	0.25	0.22	0.27	0.19	0.20	0.12	0.11	0.06
15	0.11	0.13	0.15	0.31	0.37	0.50	0.52	0.64	0.62	0.70	0.78	0.77	0.63	0.50	0.37	0.29	0.12	0.11	0.04
20	0.08	0.16	0.36	0.58	0.88	1.44	29.0	154	245	259	235	137	13.9	1.76	1.11	0.56	0.26	0.14	0.04
25	0.07	0.20	0.38	0.87	1.99	142	306	310	308	307	307	307	300	111	1.94	1.03	0.36	0.17	0.04
30	0.05	0.27	0.63	1.60	272	293	292	292	292	291	291	291	294	290	249	1.86	0.62	0.25	0.04
35	0.05	0.35	0.82	2.38	278	280	280	279	278	278	278	278	278	277	274	2.54	0.82	0.31	0.04
40	0.05	0.44	1.07	2.63	255	257	258	256	256	256	255	256	254	253	250	3.00	1.16	0.43	0.04
45	0.05	0.52	1.28	2.63	237	241	240	240	238	238	238	238	236	236	233	2.97	1.39	0.52	0.04
50	0.05	0.63	1.40	2.57	208	209	209	211	210	209	208	208	206	206	203	2.86	1.64	0.66	0.04
55	0.05	0.72	1.41	2.44	187	188	188	188	187	187	186	186	185	185	181	2.74	1.64	0.73	0.04
60	0.04	0.79	1.39	2.22	150	152	151	152	151	151	149	149	148	147	144	2.50	1.53	0.83	0.04
65	0.04	0.83	1.33	2.09	125	127	126	127	125	125	123	123	122	121	118	2.32	1.48	0.83	0.04
70	0.04	0.71	1.26	1.78	84.5	85.9	85.6	86.2	83.9	83.5	81.6	81.9	80.5	80.4	77.6	1.92	1.35	0.78	0.04
75	0.04	0.70	1.21	1.76	56.8	59.6	58.8	58.0	55.1	54.5	52.8	53.4	52.9	53.2	50.3	1.78	1.25	0.70	0.04
80	0.04	0.60	1.14	1.65	6.78	18.5	19.2	18.8	16.7	16.8	16.5	17.8	17.9	10.8	2.79	1.76	1.17	0.62	0.04
85	0.04	0.58	1.10	1.61	2.25	3.48	5.09	5.29	4.87	4.85	5.16	5.54	5.06	3.31	2.29	1.62	1.11	0.59	0.04
90	0.04	0.58	1.07	1.53	2.23	3.16	3.84	4.03	3.98	3.82	4.07	4.17	4.01	3.28	2.24	1.52	1.06	0.59	0.05
95	0.04	0.58	1.04	1.56	2.22	3.16	3.86	4.09	3.98	3.90	4.04	4.17	4.00	3.22	2.21	1.55	1.03	0.58	0.07
100	0.04	0.58	1.03	1.64	2.31	3.26	3.89	4.23	4.21	4.20	4.25	4.32	4.00	3.34	2.35	1.65	1.03	0.59	0.11
105	0.10	0.60	1.03	1.65	2.40	3.42	4.08	4.46	4.45	4.46	4.50	4.54	4.17	3.53	2.48	1.70	1.03	0.60	0.17
110	0.16	0.63	1.03	1.65	2.57	3.66	4.37	4.84	4.90	4.93	4.93	4.94	4.49	3.79	2.61	1.74	1.05	0.64	0.29
115	0.37	0.66	1.04	1.63	2.57	3.77	4.58	5.09	5.19	5.27	5.25	5.22	4.71	3.91	2.68	1.70	1.05	0.67	0.40
120	0.45	0.76	1.07	1.53	2.38	3.68	4.76	5.44	5.66	5.77	5.74	5.58	4.94	3.89	2.55	1.70	1.17	0.75	0.59
125	0.60	0.85	1.11	1.50	2.15	3.33	4.78	5.54	5.90	6.08	6.00	5.67	4.98	3.55	2.34	1.70	1.19	0.84	0.74
130	0.82	1.00	1.17	1.47	1.89	2.55	3.81	5.02	5.76	5.98	5.86	5.23	4.02	2.77	2.16	1.77	1.31	1.02	0.94
135	0.96	1.10	1.18	1.47	1.79	2.22	2.99	3.97	4.82	5.18	4.96	4.19	3.20	2.47	2.12	1.83	1.39	1.13	1.09
140	1.17	1.25	1.31	1.47	1.70	1.99	2.43	2.79	3.21	3.38	3.38	3.01	2.67	2.33	2.10	1.90	1.53	1.33	1.31
145	1.30	1.34	1.31	1.48	1.65	1.88	2.25	2.46	2.78	2.86	2.95	2.71	2.55	2.26	2.10	1.95	1.63	1.45	1.42
150	1.48	1.48	1.42	1.54	1.59	1.76	2.06	2.22	2.46	2.50	2.60	2.46	2.40	2.22	2.11	2.04	1.76	1.62	1.62
155	1.59	1.58	1.50	1.59	1.59	1.77	1.92	2.07	2.29	2.34	2.43	2.33	2.30	2.24	2.12	2.09	1.88	1.74	1.74
160	1.76	1.74	1.65	1.71	1.66	1.78	1.84	1.95	2.07	2.12	2.21	2.25	2.25	2.32	2.22	2.18	1.98	1.89	1.88
165	1.87	1.88	1.78	1.84	1.77	1.86	1.87	1.98	2.05	2.17	2.22	2.35	2.35	2.39	2.29	2.24	2.03	2.00	1.99
170	2.09	2.10	2.00	2.05	1.98	2.04	2.05	2.22	2.34	2.48	2.47	2.47	2.49	2.38	2.34	2.26	2.13	2.16	2.18
175	2.21	2.21	2.12	2.18	2.11	2.18	2.23	2.39	2.45	2.47	2.48	2.47	2.48	2.38	2.35	2.31	2.23	2.26	2.26
180	2.29	2.29	2.24	2.24	2.24	2.31	2.36	2.39	2.45	2.45	2.47	2.47	2.46	2.38	2.35	2.35	2.33	2.34	2.29

C Range: 0 - 360DEG
 C Interval: 10.0DEG
 Test Speed: HIGH
 Temperature:25.3DEG
 Operators:LQL
 Test Date:18 October 2022

g Range: 0 - 180DEG
 Interval: 2.0DEG
 Test System:EVERFINE GO-2000B_V1 SYSTEM V2.0.403
 Humidity:65.0%
 Test Distance:10.365m [K=1.0000]
 Remarks: ZG1BME30KH0 MINI-10-500

LUMINOUS DISTRIBUTION INTENSITY DATA

Test:U:230.61V I:0.0447A P:9.0330W PF:0.8748 Freq:49.99Hz Lamp Flux:503.782x1 lm		
NAME: Montana 7.5W LED outdoor wall light	TYPE:	WEIGHT:
SPEC.:	DIM.:	SERIAL No.:
MFR.: CG LIGHTING	SUR.:	Shielding Angle:

Table--2

UNIT: cd

C(DEG) g (DEG)	190	200	210	220	230	240	250	260	270	280	290	300	310	320	330	340	350		
0	0.13	0.13	0.13	0.13	0.10	0.06	0.01	0.01	0.01	0.01	0.01	0.04	0.10	0.13	0.12	0.14	0.11		
5	0.13	0.14	0.12	0.16	0.10	0.11	0.02	0.07	0.01	0.07	0.01	0.09	0.10	0.16	0.12	0.14	0.11		
10	0.13	0.19	0.18	0.29	0.35	0.36	0.33	0.34	0.23	0.30	0.26	0.30	0.24	0.30	0.19	0.20	0.12		
15	0.13	0.27	0.36	0.52	0.60	0.84	0.98	1.16	1.10	1.11	0.95	0.76	0.56	0.50	0.36	0.27	0.12		
20	0.13	0.42	0.69	1.35	2.99	104	256	303	310	304	271	134	3.68	1.27	0.64	0.41	0.15		
25	0.21	0.57	1.20	4.22	239	305	306	306	305	306	306	306	270	11.1	1.03	0.55	0.21		
30	0.35	0.91	3.09	283	287	287	287	289	289	290	290	290	290	289	8.91	0.81	0.36		
35	0.35	1.12	4.17	274	276	276	274	276	276	276	277	278	275	277	10.5	1.00	0.36		
40	0.50	1.44	4.36	251	250	252	252	254	253	254	253	254	253	253	6.51	1.28	0.45		
45	0.58	1.65	4.25	231	233	233	234	236	235	236	236	237	236	236	4.96	1.42	0.55		
50	0.72	1.76	3.96	202	202	203	204	203	204	206	206	207	206	206	3.60	1.42	0.66		
55	0.82	1.63	3.71	177	178	180	180	181	181	183	183	185	183	184	3.13	1.41	0.70		
60	0.91	1.52	3.29	140	139	142	140	143	143	146	146	148	148	148	2.67	1.38	0.82		
65	0.94	1.44	2.80	111	111	114	114	117	116	119	120	123	121	122	2.42	1.30	0.82		
70	0.86	1.32	2.13	70.6	71.7	74.3	75.0	76.6	76.5	78.6	79.8	81.9	81.2	81.6	2.01	1.30	0.76		
75	0.82	1.28	1.90	48.3	49.5	51.2	50.6	51.9	51.8	53.7	54.1	55.7	54.8	53.6	1.93	1.19	0.72		
80	0.73	1.16	1.78	3.38	12.2	19.3	18.1	18.7	17.5	18.3	17.4	18.0	11.3	3.75	1.87	1.14	0.66		
85	0.69	1.12	1.69	2.31	3.38	5.19	5.31	5.15	4.92	4.95	4.92	4.47	3.35	2.39	1.79	1.08	0.63		
90	0.64	1.11	1.59	2.30	3.32	3.99	4.15	4.06	3.90	4.11	4.21	4.03	3.32	2.37	1.70	1.05	0.60		
95	0.64	1.11	1.62	2.32	3.29	3.97	4.17	4.18	4.01	4.24	4.24	4.03	3.36	2.35	1.62	1.03	0.58		
100	0.63	1.12	1.76	2.56	3.47	4.20	4.46	4.50	4.36	4.48	4.37	4.12	3.33	2.43	1.63	1.04	0.58		
105	0.63	1.14	1.76	2.69	3.62	4.40	4.69	4.78	4.65	4.74	4.61	4.29	3.49	2.55	1.64	1.05	0.58		
110	0.65	1.17	1.76	2.78	3.86	4.74	5.10	5.23	5.16	5.20	4.99	4.60	3.69	2.58	1.64	1.08	0.58		
115	0.70	1.20	1.77	2.73	4.00	4.92	5.35	5.57	5.48	5.53	5.22	4.76	3.76	2.54	1.64	1.10	0.66		
120	0.82	1.27	1.77	2.49	3.98	5.05	5.66	5.97	5.97	5.90	5.47	4.82	3.69	2.29	1.59	1.13	0.83		
125	0.93	1.33	1.76	2.31	3.52	4.91	5.69	6.04	6.13	5.99	5.54	4.68	3.22	2.05	1.56	1.17	0.86		
130	1.06	1.44	1.77	2.11	2.77	3.80	5.03	5.63	5.78	5.50	4.78	3.52	2.50	1.78	1.51	1.25	1.02		
135	1.17	1.52	1.79	2.09	2.52	3.04	3.90	4.58	4.73	4.41	3.65	2.79	2.23	1.75	1.49	1.33	1.15		
140	1.36	1.65	1.88	2.09	2.34	2.54	2.93	3.12	3.18	2.96	2.68	2.28	1.98	1.64	1.49	1.42	1.30		
145	1.46	1.73	1.91	2.10	2.26	2.37	2.65	2.71	2.74	2.57	2.41	2.10	1.87	1.62	1.53	1.50	1.42		
150	1.64	1.87	2.00	2.15	2.20	2.22	2.36	2.35	2.38	2.21	2.12	1.87	1.78	1.65	1.59	1.62	1.55		
155	1.76	1.95	2.11	2.20	2.19	2.21	2.19	2.18	2.19	2.02	1.97	1.83	1.77	1.70	1.64	1.69	1.64		
160	1.89	2.07	2.12	2.28	2.24	2.29	2.16	2.15	2.07	2.01	1.92	1.87	1.76	1.81	1.76	1.84	1.79		
165	1.99	2.14	2.21	2.34	2.35	2.40	2.32	2.28	2.10	2.07	1.94	1.94	1.87	1.94	1.89	1.98	1.91		
170	2.12	2.21	2.24	2.35	2.36	2.45	2.47	2.48	2.46	2.43	2.23	2.19	2.09	2.14	2.12	2.17	2.11		
175	2.25	2.26	2.24	2.29	2.36	2.39	2.46	2.46	2.48	2.47	2.38	2.35	2.22	2.25	2.21	2.25	2.25		
180	2.25	2.26	2.24	2.24	2.32	2.36	2.44	2.44	2.46	2.46	2.47	2.45	2.36	2.34	2.34	2.33	2.32		

C Range: 0 - 360DEG
 C Interval: 10.0DEG
 Test Speed: HIGH
 Temperature:25.3DEG
 Operators:LQL
 Test Date:18 October 2022

g Range: 0 - 180DEG
 Interval: 2.0DEG
 Test System:EVERFINE GO-2000B_V1 SYSTEM V2.0.403
 Humidity:65.0%
 Test Distance:10.365m [K=1.0000]
 Remarks: ZG1BME30KH0 MINI-10-500