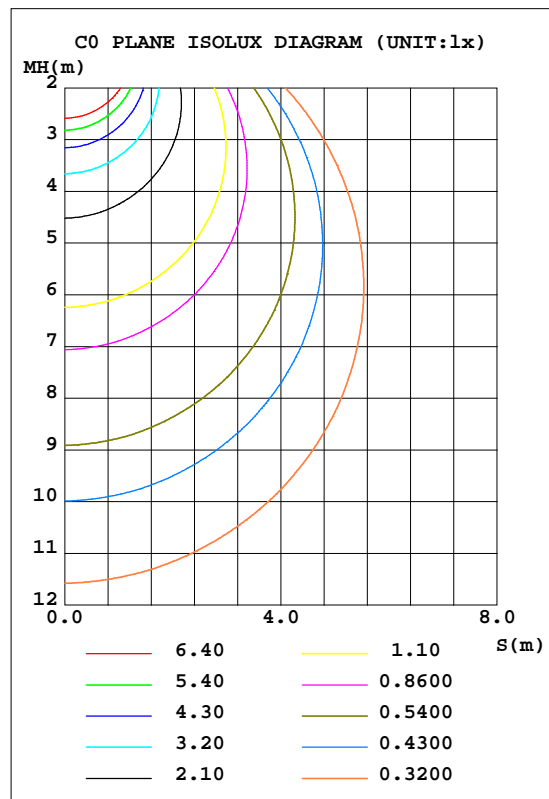
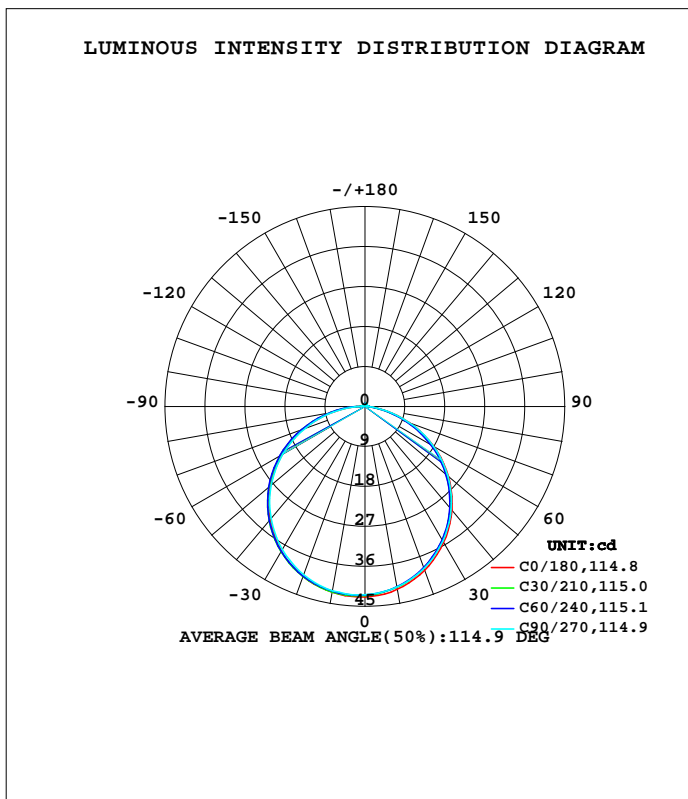


LUMINAIRE PHOTOMETRIC TEST REPORT

Test:U:0.7336V I:0A P:0W PF:0.0000 Freq:49.97Hz Lamp Flux:129.338x1 lm		
NAME: May 1.5W LED rechargeable portable light	TYPE:	WEIGHT:
SPEC.:	DIM.:	SERIAL No.:
MFR.: CG LIGHTING	SUR.:	Shielding Angle:

DATA OF LAMP		PHOTOMETRIC DATA			
MODEL	2042A-UR	I _{max} (cd)	42.90	S/MH(C0/180)	1.30
NOMINAL POWER(W)		LOR(%)	100.0	S/MH(C90/270)	1.30
RATED VOLTAGE(V)		TOTAL FLUX(lm)	129.34	h UP, DN(C0-180)	1.4,46.0
NOMINAL FLUX(lm)	129.338	CIE CLASS	DIRECT	h UP, DN(C180-360)	1.6,51.1
LAMPS INSIDE	1	h up(%)	3.0	CIBSE SHR NOM	1.25
TEST VOLTAGE(V)		h down(%)	97.0	CIBSE SHR MAX	1.35



C Range: 0 - 360DEG
 C Interval: 10.0DEG
 Test Speed: HIGH
 Temperature:25.3DEG
 Operators:LQL
 Test Date:31 May 2023

Range: 0 - 180DEG
 Interval: 2.0DEG
 Test System:EVERFINE GO-2000B_V1 SYSTEM V2.0.403
 Humidity:65.0%
 Test Distance:10.365m [K=1.0000]
 Remarks: SMD

ZONAL FLUX DIAGRAM

ZONAL FLUX DIAGRAM:

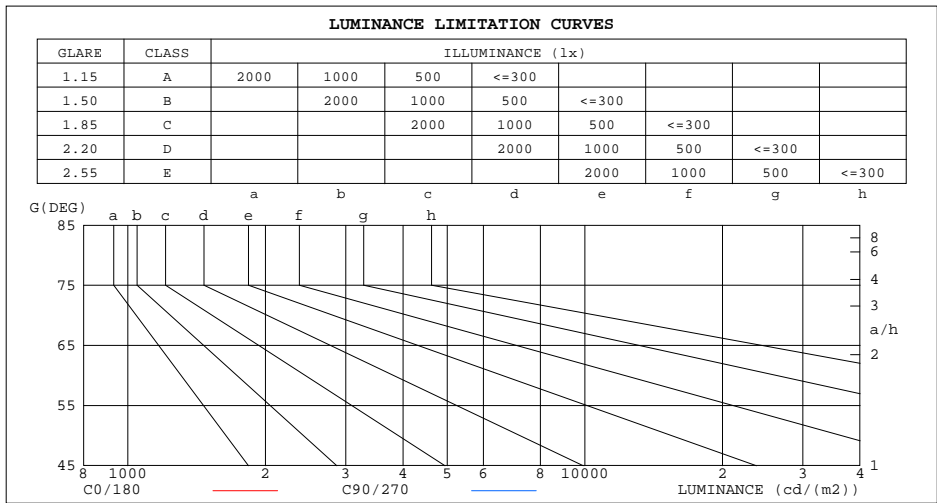
g	C0	C45	C90	C135	C180	C225	C270	C315	g	F zone	F total	%lum,lamp
10	41.80	41.24	41.26	41.55	42.45	42.35	42.11	41.63	0- 10	4.018	4.018	3.11,3.11
20	39.23	38.63	38.83	39.38	40.71	40.73	40.32	39.54	10- 20	11.53	15.55	12,12
30	35.40	34.73	35.04	35.95	37.59	37.78	37.20	36.14	20- 30	17.54	33.09	25.6,25.6
40	30.48	29.71	30.22	31.31	33.18	33.61	32.93	31.57	30- 40	21.28	54.37	42,42
50	24.57	23.78	24.39	25.71	27.82	28.33	27.54	25.99	40- 50	22.28	76.65	59.3,59.3
60	17.83	17.04	17.79	19.28	21.50	22.14	21.29	19.57	50- 60	20.40	97.05	75,75
70	10.61	9.822	10.57	12.22	14.48	15.22	14.32	12.51	60- 70	15.86	112.9	87.3,87.3
80	3.805	3.228	3.794	5.231	7.221	7.958	7.175	5.487	70- 80	9.384	122.3	94.6,94.6
90	0.9889	0.9479	0.9587	1.078	1.606	1.981	1.560	1.066	80- 90	3.231	125.5	97,97
100	0.7231	0.6786	0.7004	0.7561	0.8261	0.8595	0.8337	0.7524	90-100	1.018	126.5	97.8,97.8
110	0.5313	0.4832	0.4574	0.5312	0.5900	0.6344	0.6198	0.5716	100-110	0.6926	127.2	98.4,98.4
120	0.4426	0.4094	0.3983	0.4169	0.4721	0.5053	0.5164	0.4868	110-120	0.4932	127.7	98.8,98.8
130	0.4205	0.4425	0.4500	0.4131	0.4721	0.4758	0.4795	0.4721	120-130	0.3995	128.1	99.1,99.1
140	0.4647	0.5053	0.5312	0.4905	0.5312	0.4979	0.4795	0.4979	130-140	0.3631	128.5	99.3,99.3
150	0.5310	0.5790	0.5902	0.5495	0.5902	0.5643	0.5310	0.5753	140-150	0.3295	128.8	99.6,99.6
160	0.5827	0.6160	0.6491	0.6012	0.6493	0.6086	0.5827	0.6160	150-160	0.2746	129.1	99.8,99.8
170	0.6711	0.6896	0.6786	0.6528	0.7008	0.6528	0.6638	0.6565	160-170	0.1806	129.3	99.9,99.9
180	0.7155	0.7118	0.7008	0.7008	0.7155	0.7118	0.7155	0.7008	170-180	0.0655	129.3	100,100
DEG	LUMINOUS INTENSITY:cd								UNIT:lm			

C Range: 0 - 360DEG
 C Interval: 10.0DEG
 Test Speed: HIGH
 Temperature:25.3DEG
 Operators:LQL
 Test Date:31 May 2023

g Range: 0 - 180DEG
 Interval: 2.0DEG
 Test System:EVERFINE GO-2000B_V1 SYSTEM V2.0.403
 Humidity:65.0%
 Test Distance:10.365m [K=1.0000]
 Remarks: SMD

LUMINANCE LIMITATION CURVES

Test:U:0.7336V I:0A P:0W PF:0.0000 Freq:49.97Hz Lamp Flux:129.338x1 lm		
NAME: May 1.5W LED rechargeable portable light	TYPE:	WEIGHT:
SPEC.:	DIM.:	SERIAL No.:
MFR.: CG LIGHTING	SUR.:	Shielding Angle:



LUMINANCE cd/(m2)		
G(DEG)	C0/180	C90/270
85	216	214
80	219	219
75	299	298
70	310	309
65	354	353
60	357	356
55	383	380
50	382	379
45	399	396

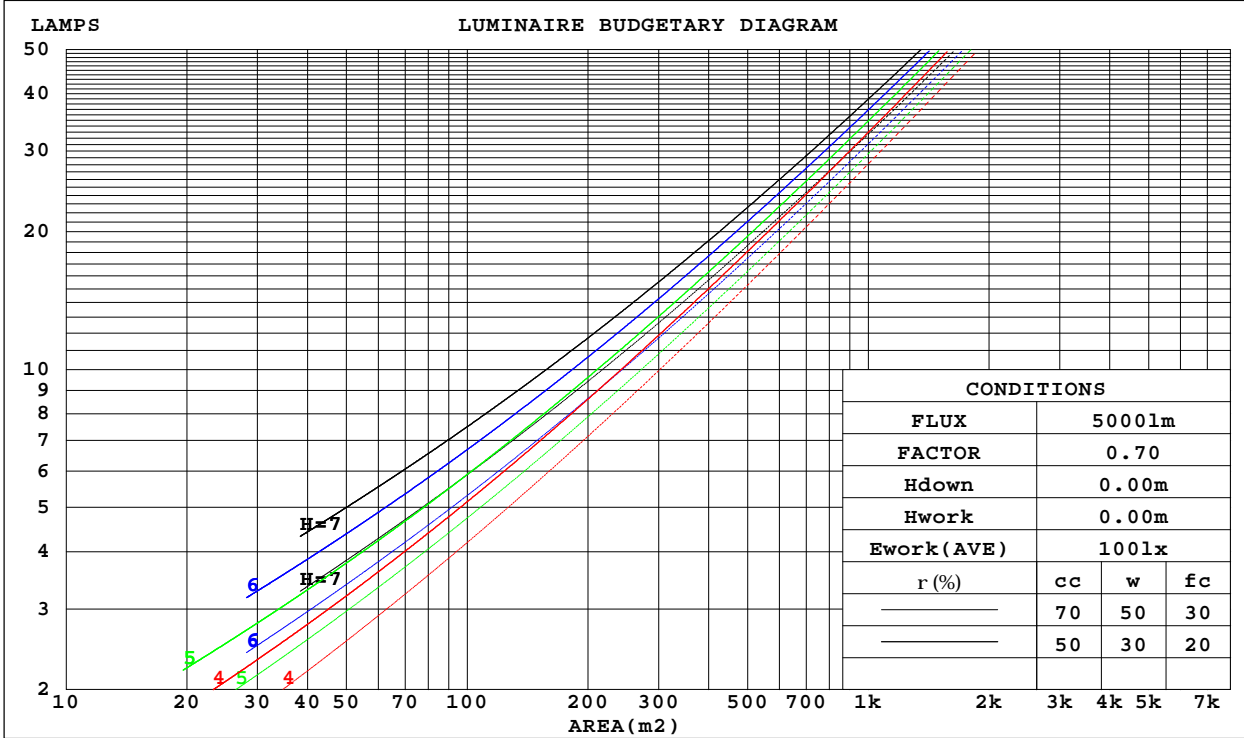
C Range: 0 - 360DEG
 C Interval: 10.0DEG
 Test Speed: HIGH
 Temperature:25.3DEG
 Operators:LQL
 Test Date:31 May 2023

G Range: 0 - 180DEG
 G Interval: 2.0DEG
 Test System:EVERFINE GO-2000B_V1 SYSTEM V2.0.403
 Humidity:65.0%
 Test Distance:10.365m [K=1.0000]
 Remarks: SMD

CU AND LUMINAIRE BUDGETARY ESTIMATE DIAGRAM

Test:U:0.7336V I:0A P:0W PF:0.0000 Freq:49.97Hz Lamp Flux:129.338x1 lm		
NAME: May 1.5W LED rechargeable portable light	TYPE:	WEIGHT:
SPEC.:	DIM.:	SERIAL No.:
MFR.: CG LIGHTING	SUR.:	Shielding Angle:

r _{cc}	80%			70%			50%			30%			10%			0
r _w	50%	30%	10%	50%	30%	10%	50%	30%	10%	50%	30%	10%	50%	30%	10%	0
r _{fc}	20%			20%			20%			20%			20%			0
RCR	RCR:Room Cavity Ratio						Coefficients of Utilization(CU)									
0.0	1.18	1.18	1.18	1.15	1.15	1.15	1.09	1.09	1.09	1.04	1.04	1.04	.99	.99	.99	.97
1.0	1.03	.98	.94	1.00	.96	.92	.95	.92	.89	.91	.88	.86	.87	.85	.83	.80
2.0	.89	.82	.76	.87	.81	.75	.83	.78	.73	.79	.75	.71	.76	.72	.69	.66
3.0	.78	.70	.63	.76	.69	.62	.73	.66	.61	.70	.64	.59	.67	.62	.58	.56
4.0	.69	.60	.53	.68	.59	.53	.65	.57	.52	.62	.56	.51	.59	.54	.50	.47
5.0	.62	.52	.46	.60	.52	.45	.58	.50	.45	.56	.49	.44	.53	.48	.43	.41
6.0	.55	.46	.40	.54	.46	.40	.52	.45	.39	.50	.43	.38	.48	.42	.38	.36
7.0	.50	.41	.35	.49	.41	.35	.47	.40	.34	.46	.39	.34	.44	.38	.33	.31
8.0	.46	.37	.31	.45	.37	.31	.43	.36	.31	.42	.35	.30	.40	.34	.30	.28
9.0	.42	.34	.28	.41	.33	.28	.40	.33	.28	.39	.32	.27	.37	.31	.27	.25
10.0	.39	.31	.25	.38	.30	.25	.37	.30	.25	.36	.29	.25	.35	.29	.24	.23



C Range: 0 - 360DEG
 C Interval: 10.0DEG
 Test Speed: HIGH
 Temperature:25.3DEG
 Operators:LQL
 Test Date:31 May 2023

Range: 0 - 180DEG
 Interval: 2.0DEG
 Test System:EVERFINE GO-2000B_V1 SYSTEM V2.0.403
 Humidity:65.0%
 Test Distance:10.365m [K=1.0000]
 Remarks: SMD

WEC AND CCEC

Test:U:0.7336V I:0A P:0W PF:0.0000 Freq:49.97Hz Lamp Flux:129.338x1 lm		
NAME: May 1.5W LED rechargeable portable light	TYPE:	WEIGHT:
SPEC.:	DIM.:	SERIAL No.:
MFR.: CG LIGHTING	SUR.:	Shielding Angle:

rcc	80%			70%			50%			30%			10%			0
rw	50%	30%	10%	50%	30%	10%	50%	30%	10%	50%	30%	10%	50%	30%	10%	0
rfc	20%			20%			20%			20%			20%			0
RCR	RCR:Room Cavity Ratio						Wall Exitance Coefficients(WEC)									
0.0																
1.0	.319	.181	.057	.311	.177	.056	.296	.170	.054	.282	.163	.052	.269	.156	.050	
2.0	.297	.163	.050	.290	.160	.049	.276	.154	.048	.264	.148	.046	.253	.143	.045	
3.0	.273	.145	.044	.267	.143	.043	.255	.138	.042	.244	.134	.041	.234	.130	.040	
4.0	.251	.131	.038	.246	.129	.038	.235	.125	.037	.226	.121	.037	.216	.118	.036	
5.0	.232	.118	.034	.227	.117	.034	.218	.113	.033	.209	.110	.033	.201	.107	.032	
6.0	.215	.108	.031	.210	.106	.031	.202	.103	.030	.194	.101	.030	.187	.098	.029	
7.0	.200	.099	.028	.196	.097	.028	.188	.095	.027	.181	.093	.027	.174	.091	.027	
8.0	.186	.091	.026	.183	.090	.025	.176	.088	.025	.169	.086	.025	.163	.084	.024	
9.0	.174	.084	.024	.171	.083	.023	.165	.082	.023	.159	.080	.023	.154	.078	.023	
10.0	.164	.079	.022	.161	.078	.022	.155	.076	.021	.150	.075	.021	.145	.073	.021	

rcc	80%			70%			50%			30%			10%			0
rw	50%	30%	10%	50%	30%	10%	50%	30%	10%	50%	30%	10%	50%	30%	10%	0
rfc	20%			20%			20%			20%			20%			0
RCR	RCR:Room Cavity Ratio						Ceiling Cavity Exitance Coefficients(CCEC)									
0.0	.213	.213	.213	.182	.182	.182	.124	.124	.124	.071	.071	.071	.023	.023	.023	
1.0	.204	.179	.156	.174	.153	.135	.119	.106	.093	.069	.061	.054	.022	.020	.017	
2.0	.196	.155	.120	.168	.133	.104	.115	.092	.072	.066	.054	.042	.021	.017	.014	
3.0	.188	.137	.097	.161	.118	.084	.111	.082	.059	.064	.048	.035	.021	.016	.011	
4.0	.180	.124	.081	.155	.107	.070	.106	.075	.050	.062	.044	.029	.020	.014	.010	
5.0	.173	.114	.070	.149	.098	.061	.102	.069	.043	.059	.040	.026	.019	.013	.008	
6.0	.166	.105	.062	.143	.091	.054	.098	.064	.038	.057	.038	.023	.018	.012	.008	
7.0	.159	.099	.056	.137	.085	.049	.094	.060	.035	.055	.035	.021	.018	.012	.007	
8.0	.153	.093	.052	.131	.081	.045	.091	.057	.032	.053	.033	.019	.017	.011	.006	
9.0	.146	.088	.048	.126	.076	.042	.087	.054	.030	.051	.032	.018	.016	.010	.006	
10.0	.141	.084	.046	.121	.073	.040	.084	.051	.028	.049	.030	.017	.016	.010	.006	

C Range: 0 - 360DEG
 C Interval: 10.0DEG
 Test Speed: HIGH
 Temperature:25.3DEG
 Operators:LQL
 Test Date:31 May 2023

g Range: 0 - 180DEG
 g Interval: 2.0DEG
 Test System:EVERFINE GO-2000B_V1 SYSTEM V2.0.403
 Humidity:65.0%
 Test Distance:10.365m [K=1.0000]
 Remarks: SMD

UGR(Unified Glare Rating) Table

Test:U:0.7336V I:0A P:0W PF:0.0000 Freq:49.97Hz Lamp Flux:129.338x1 lm										
NAME: May 1.5W LED rechargeable portable light					TYPE:			WEIGHT:		
SPEC.:					DIM.:			SERIAL No.:		
MFR.: CG LIGHTING					SUR.:			Shielding Angle:		
ceiling/cavity	0.7	0.7	0.5	0.5	0.3	0.7	0.7	0.5	0.5	0.3
walls	0.5	0.3	0.5	0.3	0.3	0.5	0.3	0.5	0.3	0.3
working plane	0.2	0.2	0.2	0.2	0.2	0.2	0.2	0.2	0.2	0.2
Room dimensions	Viewed crosswise					Viewed endwise				
x = 2H y = 2H	16.0	17.5	16.3	17.7	18.0	15.9	17.4	16.2	17.7	18.0
3H	17.4	18.7	17.7	19.0	19.3	17.3	18.7	17.7	19.0	19.3
4H	17.9	19.2	18.2	19.5	19.8	17.8	19.1	18.2	19.4	19.7
6H	18.1	19.4	18.5	19.7	20.1	18.1	19.3	18.4	19.6	20.0
8H	18.2	19.4	18.6	19.7	20.1	18.1	19.3	18.5	19.7	20.0
12H	18.2	19.4	18.6	19.7	20.1	18.1	19.3	18.5	19.6	20.0
4H 2H	16.5	17.8	16.8	18.1	18.4	16.5	17.8	16.8	18.1	18.4
3H	18.0	19.2	18.4	19.5	19.9	18.0	19.1	18.4	19.5	19.8
4H	18.6	19.7	19.0	20.0	20.4	18.6	19.6	19.0	20.0	20.4
6H	19.0	19.9	19.4	20.3	20.8	18.9	19.9	19.4	20.3	20.7
8H	19.1	19.9	19.5	20.4	20.8	19.0	19.9	19.5	20.3	20.8
12H	19.1	19.9	19.6	20.4	20.8	19.1	19.9	19.5	20.3	20.8
8H 4H	18.8	19.6	19.2	20.1	20.5	18.7	19.6	19.2	20.0	20.5
6H	19.2	20.0	19.7	20.4	20.9	19.2	19.9	19.7	20.4	20.8
8H	19.4	20.0	19.9	20.5	21.0	19.3	20.0	19.8	20.4	20.9
12H	19.5	20.0	20.0	20.5	21.1	19.4	20.0	19.9	20.5	21.0
12H 4H	18.7	19.5	19.2	20.0	20.5	18.7	19.5	19.2	19.9	20.4
6H	19.2	19.9	19.7	20.4	20.9	19.2	19.8	19.7	20.3	20.8
8H	19.4	19.9	19.9	20.4	21.0	19.3	19.9	19.9	20.4	20.9
Variations with the observer position at spacings:										
S = 1.0H	+ 0.2 / - 0.2					+ 0.2 / - 0.2				
1.5H	+ 0.1 / - 0.3					+ 0.2 / - 0.3				
2.0H	+ 0.3 / - 0.3					+ 0.3 / - 0.3				

CIE Pub.117, 129.3 lm Total Lamp Luminous Flux Correct (8log(F/F0) = -7.1)

C Range: 0 - 360DEG
 C Interval: 10.0DEG
 Test Speed: HIGH
 Temperature:25.3DEG
 Operators:LQL
 Test Date:31 May 2023

g Range: 0 - 180DEG
 g Interval: 2.0DEG
 Test System:EVERFINE GO-2000B_V1 SYSTEM V2.0.403
 Humidity:65.0%
 Test Distance:10.365m [K=1.0000]
 Remarks: SMD

UTILIZATION FACTORS TABLE

Test:U:0.7336V I:0A P:0W PF:0.0000 Freq:49.97Hz Lamp Flux:129.338x1 lm		
NAME: May 1.5W LED rechargeable portable light	TYPE:	WEIGHT:
SPEC.:	DIM.:	SERIAL No.:
MFR.: CG LIGHTING	SUR.:	Shielding Angle:

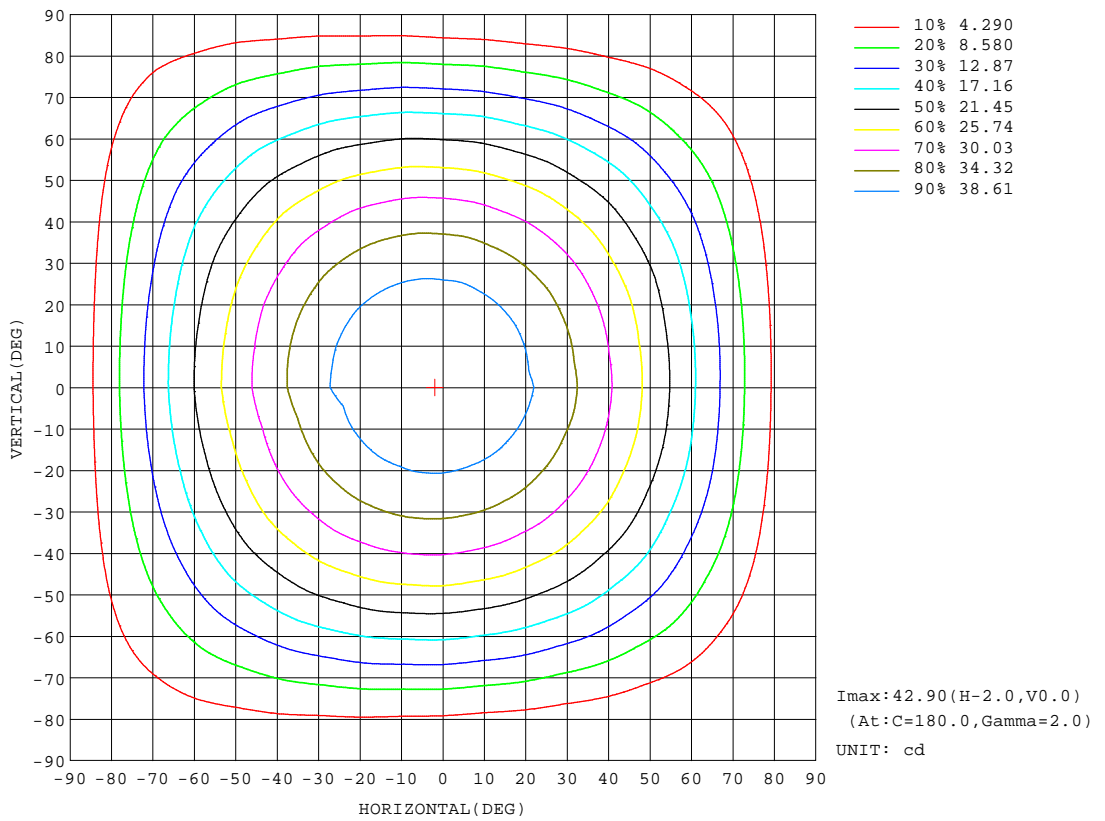
REFLECTANCE										
Ceiling	0.8	0.8	0.8	0.7	0.7	0.7	0.5	0.5	0.5	0
Walls	0.7	0.5	0.3	0.7	0.5	0.3	0.7	0.5	0.3	0
Working plane	0.2	0.2	0.2	0.2	0.2	0.2	0.2	0.2	0.2	0
ROOM INDEX	UTILIZATION FACTORS(PERCENT) $k(RI) \times RCR = 5$									
k = 0.60	56	44	37	55	44	37	54	43	37	30
0.80	66	54	47	65	54	46	63	53	46	39
1.00	74	63	55	73	62	55	70	63	54	47
1.25	81	71	63	80	70	63	77	68	62	54
1.50	86	76	69	85	75	68	81	73	67	59
2.00	93	84	78	91	83	77	87	81	75	67
2.50	97	89	83	95	88	82	91	85	80	71
3.00	101	94	88	98	92	87	94	89	84	75
4.00	105	99	94	102	97	92	98	93	89	80
5.00	107	102	98	105	100	96	100	96	93	83
ROOM INDEX	UF(total)									Direct
According to DIN EN 13032-2 2004			Suspended				SHRNOM = 1.25			

C Range: 0 - 360DEG
 C Interval: 10.0DEG
 Test Speed: HIGH
 Temperature:25.3DEG
 Operators:LQL
 Test Date:31 May 2023

g Range: 0 - 180DEG
 Interval: 2.0DEG
 Test System:EVERFINE GO-2000B_V1 SYSTEM V2.0.403
 Humidity:65.0%
 Test Distance:10.365m [K=1.0000]
 Remarks: SMD

ISOCANDELA DIAGRAM

Test:U:0.7336V I:0A P:0W PF:0.0000 Freq:49.97Hz Lamp Flux:129.338x1 lm		
NAME: May 1.5W LED rechargeable portable light	TYPE:	WEIGHT:
SPEC.:	DIM.:	SERIAL No.:
MFR.: CG LIGHTING	SUR.:	Shielding Angle:

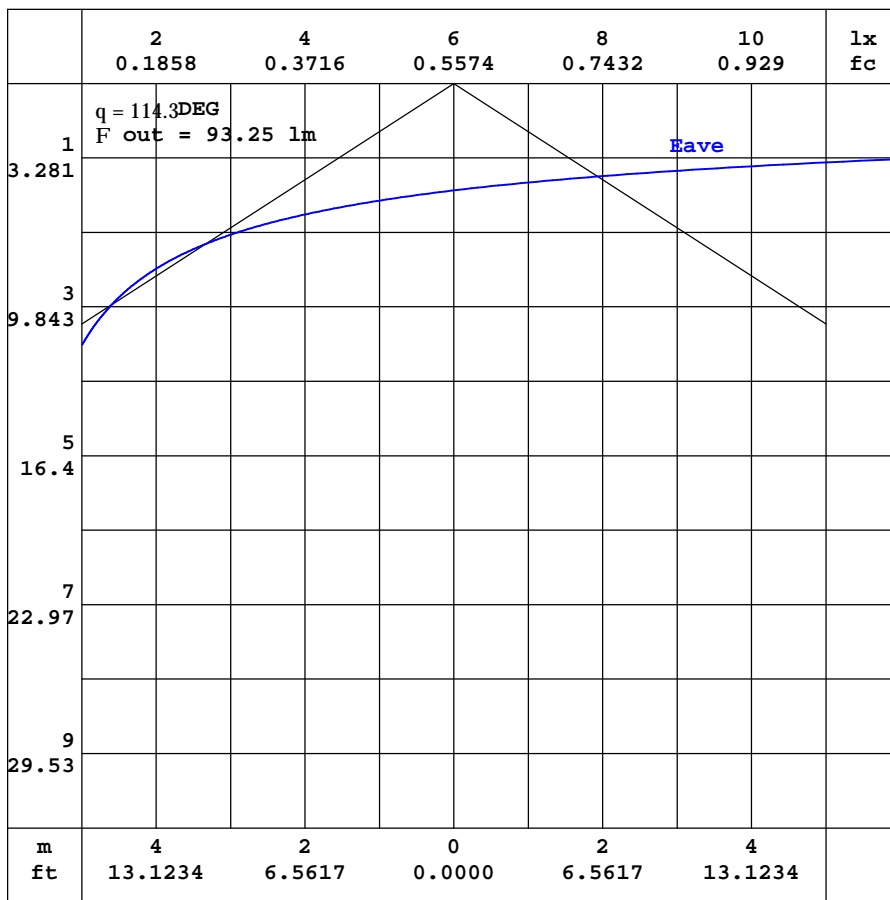


C Range: 0 - 360DEG
 C Interval: 10.0DEG
 Test Speed: HIGH
 Temperature: 25.3DEG
 Operators: LQL
 Test Date: 31 May 2023

Range: 0 - 180DEG
 Interval: 2.0DEG
 Test System: EVERFINE GO-2000B_V1 SYSTEM V2.0.403
 Humidity: 65.0%
 Test Distance: 10.365m [K=1.0000]
 Remarks: SMD

AAI CURVES

Test:U:0.7336V I:0A P:0W PF:0.0000 Freq:49.97Hz Lamp Flux:129.338x1 lm		
NAME: May 1.5W LED rechargeable portable light	TYPE:	WEIGHT:
SPEC.:	DIM.:	SERIAL No.:
MFR.: CG LIGHTING	SUR.:	Shielding Angle:



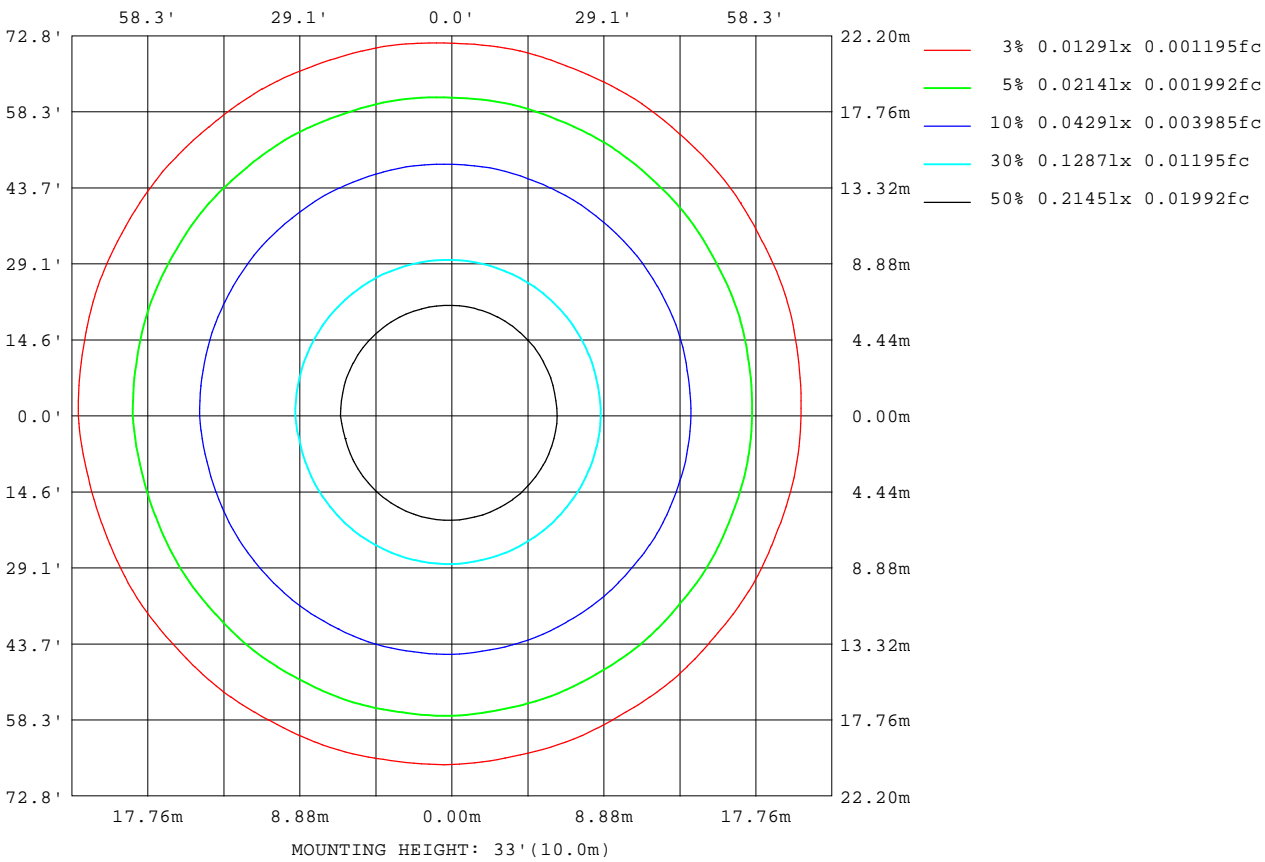
Note:The Curves indicate the illuminated area and the average illumination when the luminaire is at different distance.

C Range: 0 - 360DEG
 C Interval: 10.0DEG
 Test Speed: HIGH
 Temperature:25.3DEG
 Operators:LQL
 Test Date:31 May 2023

Range: 0 - 180DEG
 Interval: 2.0DEG
 Test System:EVERFINE GO-2000B_V1 SYSTEM V2.0.403
 Humidity:65.0%
 Test Distance:10.365m [K=1.0000]
 Remarks: SMD

ISOLUX DIAGRAM

Test:U:0.7336V I:0A P:0W PF:0.0000 Freq:49.97Hz Lamp Flux:129.338x1 lm		
NAME: May 1.5W LED rechargeable portable light	TYPE:	WEIGHT:
SPEC.:	DIM.:	SERIAL No.:
MFR.: CG LIGHTING	SUR.:	Shielding Angle:



C Range: 0 - 360DEG
 C Interval: 10.0DEG
 Test Speed: HIGH
 Temperature: 25.3DEG
 Operators: LQL
 Test Date: 31 May 2023

Page Range: 0 - 180DEG
 Interval: 2.0DEG
 Test System: EVERFINE GO-2000B_V1 SYSTEM V2.0.403
 Humidity: 65.0%
 Test Distance: 10.365m [K=1.0000]
 Remarks: SMD

LED Avg.L Report

Test:U:0.7336V I:0A P:0W PF:0.0000 Freq:49.97Hz Lamp Flux:129.338x1 lm		
NAME: May 1.5W LED rechargeable portable light	TYPE:	WEIGHT:
SPEC.:	DIM.:	SERIAL No.:
MFR.: CG LIGHTING	SUR.:	Shielding Angle:

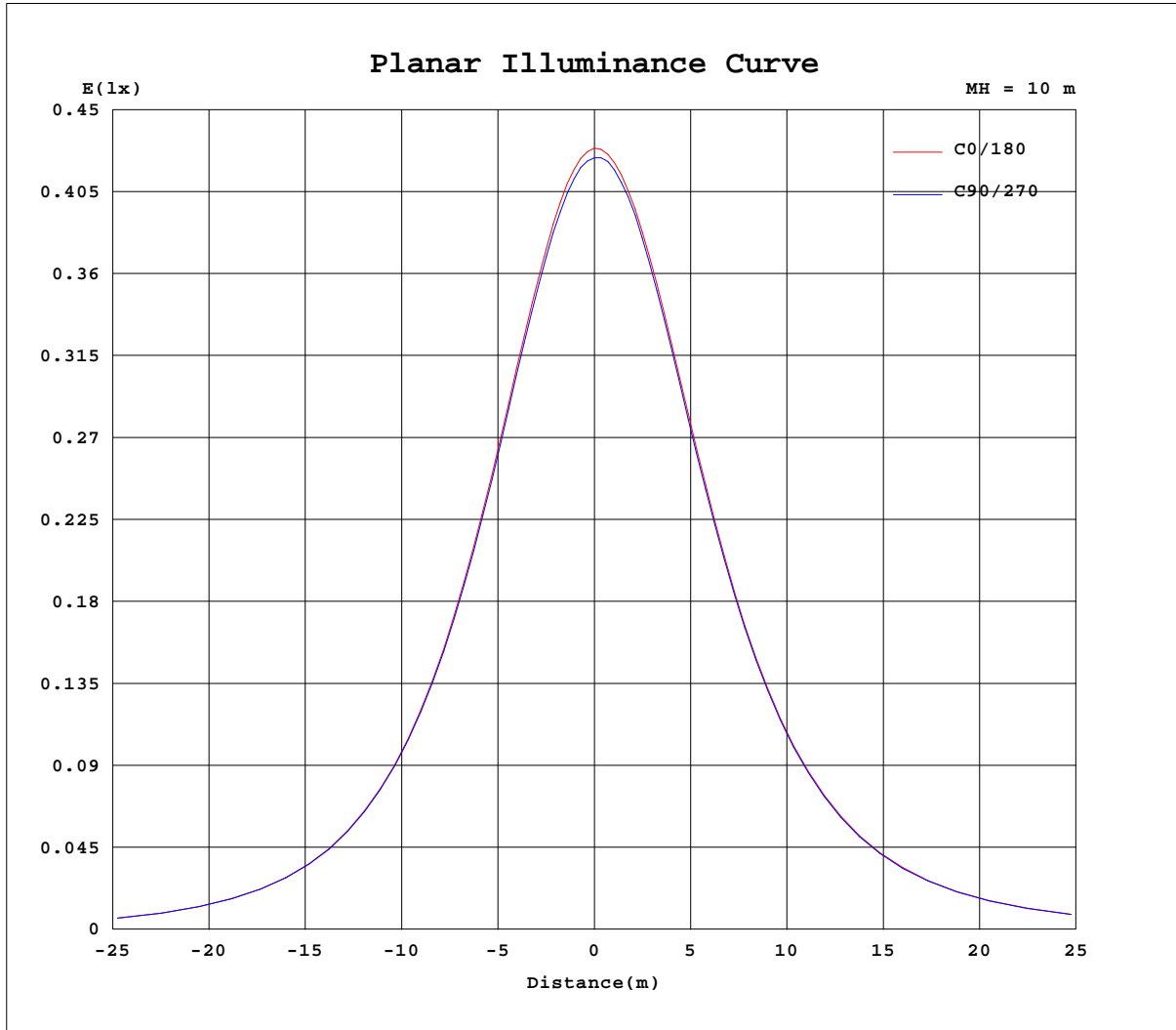
AvgL	cd/m2
L_0~180(65)av	382
L_0~180(75)av	345
L_0~180(85)av	315
L_90~270(65)av	380
L_90~270(75)av	342
L_90~270(85)av	311
L_45(65)av	379
L_45(75)av	342
L_45(85)av	313

Standard: GB/T 29293-2012

C Range: 0 - 360DEG
 C Interval: 10.0DEG
 Test Speed: HIGH
 Temperature:25.3DEG
 Operators:LQL
 Test Date:31 May 2023

g Range: 0 - 180DEG
 g Interval: 2.0DEG
 Test System:EVERFINE GO-2000B_V1 SYSTEM V2.0.403
 Humidity:65.0%
 Test Distance:10.365m [K=1.0000]
 Remarks: SMD

Planar Illuminance Curve



C Range: 0 - 360DEG
 C Interval: 10.0DEG
 Test Speed: HIGH
 Temperature: 25.3DEG
 Operators: LQL
 Test Date: 31 May 2023

Page Range: 0 - 180DEG
 Interval: 2.0DEG
 Test System: EVERFINE GO-2000B_V1 SYSTEM V2.0.403
 Humidity: 65.0%
 Test Distance: 10.365m [K=1.0000]
 Remarks: SMD

LUMINOUS DISTRIBUTION INTENSITY DATA

Test:U:0.7336V I:0A P:0W PF:0.0000 Freq:49.97Hz Lamp Flux:129.338x1 lm		
NAME: May 1.5W LED rechargeable portable light	TYPE:	WEIGHT:
SPEC.:	DIM.:	SERIAL No.:
MFR.: CG LIGHTING	SUR.:	Shielding Angle:

Table--1

UNIT: cd

C(DEG) g (DEG)	0	10	20	30	40	50	60	70	80	90	100	110	120	130	140	150	160	170	180
0	42.9	42.7	42.7	42.6	42.6	42.5	42.5	42.4	42.4	42.4	42.4	42.3	42.3	42.3	42.3	42.3	42.3	42.3	42.9
5	42.6	42.4	42.4	42.3	42.3	42.1	42.1	42.1	42.1	42.1	42.1	42.1	42.2	42.2	42.2	42.2	42.3	42.3	42.9
10	41.8	41.6	41.5	41.3	41.3	41.2	41.2	41.2	41.2	41.3	41.4	41.4	41.5	41.5	41.6	41.7	41.7	41.8	42.4
15	40.9	40.7	40.6	40.5	40.4	40.3	40.4	40.4	40.4	40.4	40.6	40.6	40.7	40.8	40.9	40.9	41.1	41.2	41.9
20	39.2	39.0	38.9	38.7	38.6	38.6	38.6	38.6	38.7	38.8	38.9	39.0	39.1	39.3	39.4	39.6	39.8	39.9	40.7
25	37.8	37.6	37.5	37.3	37.2	37.2	37.2	37.2	37.3	37.5	37.6	37.7	37.9	38.1	38.3	38.4	38.6	38.8	39.6
30	35.4	35.2	35.0	34.8	34.7	34.7	34.7	34.8	34.9	35.0	35.2	35.4	35.6	35.8	36.0	36.3	36.5	36.7	37.6
35	33.5	33.4	33.1	33.0	32.9	32.9	32.8	33.0	33.0	33.2	33.4	33.6	33.8	34.1	34.3	34.6	34.9	35.1	36.0
40	30.5	30.3	30.0	29.8	29.7	29.7	29.7	29.8	29.9	30.2	30.4	30.6	30.9	31.2	31.4	31.8	32.0	32.4	33.2
45	28.2	28.0	27.6	27.6	27.4	27.5	27.5	27.6	27.7	28.0	28.2	28.5	28.7	29.1	29.3	29.7	30.0	30.3	31.1
50	24.6	24.4	24.0	23.9	23.7	23.8	23.8	24.0	24.0	24.4	24.6	24.9	25.1	25.6	25.8	26.3	26.5	26.9	27.8
55	21.9	21.7	21.4	21.3	21.1	21.2	21.2	21.4	21.5	21.8	22.0	22.4	22.6	23.1	23.4	23.8	24.1	24.5	25.4
60	17.8	17.6	17.2	17.2	17.0	17.1	17.0	17.3	17.4	17.8	17.9	18.4	18.6	19.2	19.4	19.9	20.2	20.7	21.5
65	15.0	14.8	14.4	14.3	14.1	14.2	14.1	14.4	14.5	14.9	15.1	15.6	15.8	16.4	16.6	17.2	17.5	17.9	18.8
70	10.6	10.4	10.0	9.97	9.77	9.87	9.80	10.1	10.2	10.6	10.7	11.3	11.5	12.1	12.4	12.9	13.2	13.7	14.5
75	7.73	7.55	7.16	7.13	6.94	7.05	6.95	7.23	7.30	7.70	7.89	8.39	8.65	9.20	9.47	10.0	10.3	10.8	11.5
80	3.81	3.65	3.37	3.32	3.21	3.25	3.21	3.41	3.49	3.79	3.96	4.38	4.61	5.10	5.36	5.89	6.12	6.60	7.22
85	1.88	1.75	1.61	1.55	1.52	1.52	1.55	1.62	1.71	1.86	2.00	2.25	2.45	2.80	3.01	3.42	3.64	4.04	4.56
90	0.99	0.91	0.97	0.91	0.97	0.92	0.99	0.92	1.02	0.96	1.05	0.98	1.08	1.02	1.13	1.14	1.26	1.36	1.61
95	0.86	0.80	0.86	0.80	0.86	0.80	0.87	0.83	0.89	0.83	0.92	0.87	0.94	0.91	0.97	0.92	0.99	0.93	1.02
100	0.72	0.66	0.71	0.64	0.71	0.65	0.71	0.69	0.74	0.70	0.75	0.69	0.77	0.71	0.80	0.74	0.83	0.79	0.83
105	0.63	0.55	0.62	0.57	0.61	0.58	0.63	0.56	0.63	0.57	0.65	0.58	0.67	0.61	0.70	0.66	0.72	0.68	0.72
110	0.53	0.46	0.52	0.45	0.52	0.45	0.52	0.46	0.52	0.46	0.54	0.46	0.55	0.49	0.58	0.52	0.59	0.56	0.59
115	0.48	0.44	0.48	0.41	0.46	0.41	0.47	0.43	0.47	0.41	0.48	0.46	0.49	0.46	0.50	0.47	0.52	0.46	0.53
120	0.44	0.42	0.44	0.41	0.41	0.41	0.41	0.41	0.41	0.40	0.41	0.41	0.43	0.40	0.44	0.41	0.46	0.43	0.47
125	0.43	0.42	0.41	0.43	0.39	0.42	0.40	0.41	0.40	0.40	0.41	0.41	0.41	0.40	0.41	0.41	0.43	0.41	0.47
130	0.42	0.44	0.41	0.45	0.42	0.46	0.40	0.46	0.40	0.45	0.40	0.43	0.40	0.42	0.41	0.41	0.41	0.42	0.47
135	0.45	0.49	0.46	0.49	0.46	0.49	0.43	0.48	0.43	0.48	0.42	0.46	0.41	0.46	0.41	0.45	0.41	0.44	0.48
140	0.46	0.53	0.46	0.53	0.48	0.53	0.46	0.52	0.47	0.53	0.46	0.51	0.46	0.51	0.47	0.51	0.47	0.49	0.53
145	0.48	0.55	0.49	0.57	0.52	0.56	0.49	0.55	0.49	0.55	0.48	0.55	0.46	0.54	0.47	0.52	0.46	0.51	0.56
150	0.53	0.60	0.56	0.59	0.56	0.60	0.57	0.59	0.57	0.59	0.55	0.59	0.51	0.58	0.52	0.57	0.49	0.56	0.59
155	0.55	0.63	0.57	0.63	0.57	0.63	0.57	0.61	0.58	0.61	0.58	0.61	0.57	0.60	0.57	0.58	0.54	0.59	0.62
160	0.58	0.65	0.59	0.66	0.58	0.65	0.58	0.65	0.58	0.65	0.58	0.64	0.58	0.63	0.58	0.62	0.58	0.61	0.65
165	0.62	0.68	0.60	0.68	0.63	0.66	0.60	0.66	0.61	0.66	0.60	0.66	0.60	0.66	0.58	0.63	0.58	0.64	0.67
170	0.67	0.70	0.65	0.70	0.68	0.70	0.66	0.70	0.63	0.68	0.65	0.69	0.62	0.68	0.63	0.67	0.61	0.69	0.70
175	0.69	0.72	0.68	0.71	0.70	0.71	0.69	0.70	0.68	0.71	0.69	0.70	0.66	0.70	0.68	0.69	0.66	0.70	0.72
180	0.72	0.71	0.72	0.71	0.72	0.71	0.70	0.71	0.70	0.70	0.71	0.70	0.71	0.70	0.70	0.70	0.71	0.71	0.72

C Range: 0 - 360DEG
 C Interval: 10.0DEG
 Test Speed: HIGH
 Temperature:25.3DEG
 Operators:LQL
 Test Date:31 May 2023

g Range: 0 - 180DEG
 Interval: 2.0DEG
 Test System:EVERFINE GO-2000B_V1 SYSTEM V2.0.403
 Humidity:65.0%
 Test Distance:10.365m [K=1.0000]
 Remarks: SMD

LUMINOUS DISTRIBUTION INTENSITY DATA

Test:U:0.7336V I:0A P:0W PF:0.0000 Freq:49.97Hz Lamp Flux:129.338x1 lm		
NAME: May 1.5W LED rechargeable portable light	TYPE:	WEIGHT:
SPEC.:	DIM.:	SERIAL No.:
MFR.: CG LIGHTING	SUR.:	Shielding Angle:

Table--2

UNIT: cd

C(DEG) g (DEG)	190	200	210	220	230	240	250	260	270	280	290	300	310	320	330	340	350		
0	42.7	42.7	42.6	42.6	42.5	42.5	42.4	42.4	42.4	42.4	42.3	42.3	42.3	42.3	42.3	42.3	42.3		
5	42.8	42.7	42.7	42.6	42.6	42.6	42.5	42.5	42.5	42.4	42.3	42.3	42.3	42.2	42.2	42.1	42.1		
10	42.5	42.4	42.4	42.4	42.3	42.2	42.3	42.1	42.1	42.0	41.9	41.7	41.7	41.5	41.5	41.4	41.4		
15	41.9	41.9	41.9	41.9	41.9	41.8	41.8	41.6	41.6	41.4	41.4	41.2	41.1	40.9	40.8	40.6	40.5		
20	40.7	40.8	40.8	40.7	40.7	40.6	40.6	40.5	40.3	40.2	40.0	39.8	39.7	39.4	39.3	39.1	39.0		
25	39.6	39.7	39.7	39.8	39.7	39.6	39.5	39.4	39.2	39.1	38.9	38.7	38.5	38.2	38.0	37.9	37.6		
30	37.6	37.8	37.8	37.8	37.7	37.7	37.6	37.5	37.2	37.1	36.7	36.5	36.3	36.0	35.7	35.6	35.3		
35	36.1	36.2	36.2	36.3	36.2	36.2	36.1	35.9	35.6	35.5	35.1	34.9	34.6	34.3	34.0	33.8	33.5		
40	33.3	33.5	33.6	33.7	33.6	33.6	33.3	33.2	32.9	32.8	32.3	32.1	31.7	31.4	31.0	30.8	30.5		
45	31.3	31.5	31.5	31.7	31.5	31.6	31.3	31.2	30.9	30.7	30.3	30.0	29.6	29.3	28.9	28.6	28.3		
50	27.9	28.2	28.2	28.4	28.3	28.3	28.0	27.9	27.5	27.3	26.9	26.6	26.1	25.8	25.4	25.1	24.7		
55	25.5	25.8	25.8	26.0	25.9	25.9	25.7	25.5	25.1	24.9	24.4	24.2	23.6	23.3	22.8	22.6	22.1		
60	21.6	22.0	22.0	22.2	22.0	22.1	21.8	21.8	21.3	21.1	20.5	20.3	19.7	19.4	18.8	18.6	18.1		
65	18.9	19.3	19.3	19.5	19.4	19.4	19.1	19.0	18.6	18.4	17.8	17.5	17.0	16.7	16.1	15.9	15.3		
70	14.7	15.0	15.1	15.3	15.1	15.2	14.9	14.8	14.3	14.1	13.6	13.3	12.7	12.4	11.8	11.5	11.0		
75	11.7	12.1	12.1	12.4	12.2	12.3	12.0	11.9	11.4	11.2	10.7	10.4	9.78	9.51	8.92	8.66	8.13		
80	7.39	7.77	7.81	8.04	7.88	7.97	7.64	7.57	7.18	6.95	6.42	6.15	5.62	5.36	4.85	4.60	4.18		
85	4.73	5.07	5.09	5.30	5.18	5.22	4.96	4.88	4.49	4.32	3.88	3.64	3.21	2.98	2.62	2.42	2.14		
90	1.73	1.86	1.93	2.00	1.96	1.97	1.83	1.75	1.56	1.48	1.31	1.16	1.12	1.02	1.03	0.95	1.00		
95	1.06	1.05	1.07	1.02	1.08	0.99	1.04	0.95	1.00	0.93	0.97	0.90	0.94	0.85	0.92	0.83	0.90		
100	0.90	0.83	0.89	0.83	0.89	0.80	0.86	0.82	0.83	0.75	0.81	0.72	0.79	0.72	0.77	0.69	0.75		
105	0.80	0.73	0.79	0.81	0.79	0.74	0.77	0.70	0.76	0.69	0.73	0.66	0.71	0.63	0.69	0.61	0.68		
110	0.67	0.60	0.67	0.60	0.66	0.59	0.65	0.58	0.62	0.57	0.63	0.56	0.60	0.54	0.58	0.52	0.55		
115	0.60	0.55	0.61	0.56	0.61	0.55	0.59	0.52	0.58	0.49	0.56	0.49	0.55	0.47	0.54	0.46	0.51		
120	0.53	0.47	0.53	0.47	0.54	0.47	0.53	0.47	0.52	0.47	0.52	0.46	0.51	0.46	0.49	0.46	0.49		
125	0.49	0.47	0.49	0.47	0.50	0.47	0.50	0.47	0.49	0.47	0.49	0.46	0.49	0.46	0.46	0.46	0.47		
130	0.46	0.47	0.47	0.47	0.48	0.47	0.47	0.46	0.48	0.47	0.46	0.46	0.46	0.48	0.46	0.48	0.46		
135	0.48	0.48	0.46	0.48	0.47	0.47	0.47	0.47	0.47	0.48	0.46	0.49	0.46	0.49	0.48	0.51	0.47		
140	0.47	0.52	0.48	0.52	0.48	0.51	0.47	0.52	0.48	0.52	0.46	0.53	0.46	0.53	0.47	0.55	0.48		
145	0.49	0.55	0.48	0.54	0.48	0.54	0.47	0.54	0.49	0.54	0.49	0.55	0.49	0.56	0.50	0.57	0.52		
150	0.54	0.60	0.52	0.59	0.54	0.58	0.52	0.58	0.53	0.59	0.55	0.59	0.55	0.60	0.58	0.60	0.58		
155	0.58	0.62	0.58	0.61	0.58	0.60	0.58	0.61	0.57	0.60	0.57	0.62	0.58	0.63	0.59	0.63	0.59		
160	0.58	0.64	0.58	0.64	0.58	0.63	0.58	0.65	0.58	0.65	0.58	0.66	0.58	0.65	0.59	0.65	0.59		
165	0.60	0.67	0.60	0.66	0.59	0.67	0.60	0.66	0.60	0.66	0.60	0.66	0.60	0.66	0.60	0.67	0.61		
170	0.68	0.70	0.63	0.69	0.62	0.69	0.68	0.70	0.66	0.69	0.63	0.69	0.62	0.69	0.66	0.70	0.69		
175	0.69	0.71	0.66	0.69	0.67	0.70	0.69	0.69	0.71	0.70	0.66	0.70	0.67	0.70	0.67	0.70	0.71		
180	0.72	0.71	0.70	0.72	0.71	0.71	0.72	0.72	0.72	0.72	0.70	0.70	0.69	0.71	0.71	0.70	0.71		

C Range: 0 - 360DEG
 C Interval: 10.0DEG
 Test Speed: HIGH
 Temperature:25.3DEG
 Operators:LQL
 Test Date:31 May 2023

g Range: 0 - 180DEG
 Interval: 2.0DEG
 Test System:EVERFINE GO-2000B_V1 SYSTEM V2.0.403
 Humidity:65.0%
 Test Distance:10.365m [K=1.0000]
 Remarks: SMD