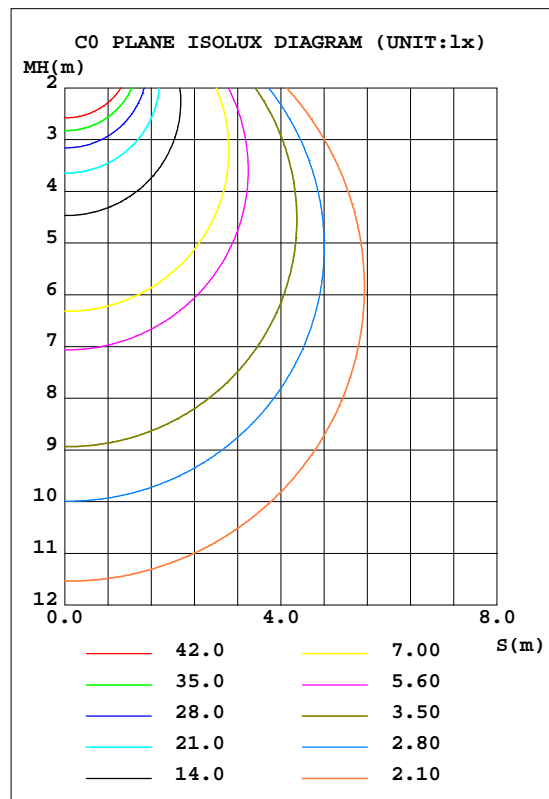
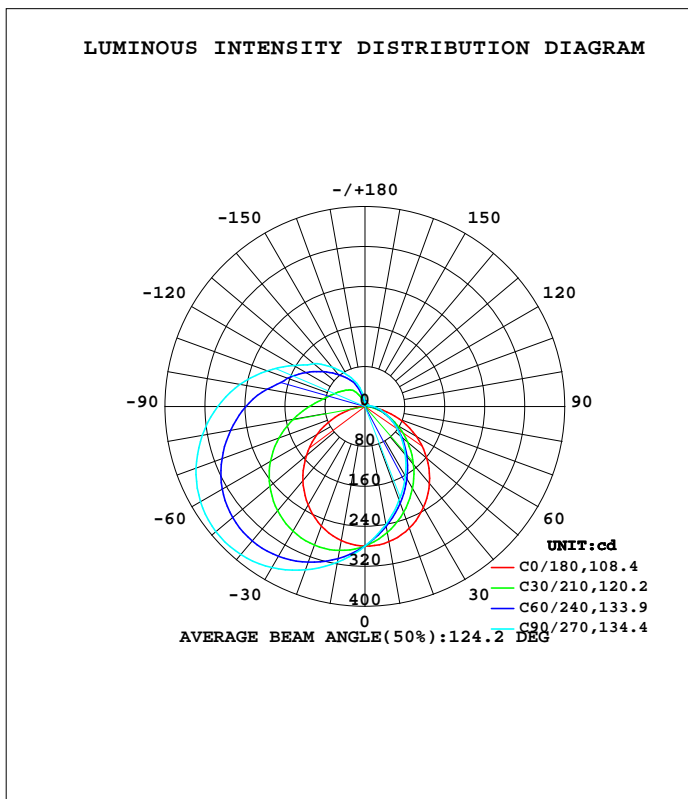


LUMINAIRE PHOTOMETRIC TEST REPORT

Test:U:230.68V I:0.0660A P:14.636W PF:0.9606 Freq:49.99Hz Lamp Flux:1427.92x1 lm		
NAME: Marilyn 12W	TYPE:	WEIGHT:
SPEC.:	DIM.:	SERIAL No.:
MFR.: CG LIGHTING	SUR.:	Shielding Angle:

DATA OF LAMP		PHOTOMETRIC DATA			
MODEL	1918B3-11P03	Imax(cd)	390.0	S/MH(C0/180)	1.22
NOMINAL POWER(W)		LOR(%)	100.0	S/MH(C90/270)	1.99
RATED VOLTAGE(V)	230	TOTAL FLUX(lm)	1427.9	h UP, DN(C0-180)	1.3, 20.2
NOMINAL FLUX(lm)	1427.92	CIE CLASS	SEMI-D.	h UP, DN(C180-360)	21.2, 57.3
LAMPS INSIDE	1	h up(%)	22.4	CIBSE SHR NOM	1.50
TEST VOLTAGE(V)	230	h down(%)	77.6	CIBSE SHR MAX	1.50



C Range: 0 - 360DEG
 C Interval: 10.0DEG
 Test Speed: HIGH
 Temperature:25.3DEG
 Operators:LQL
 Test Date:05 July 2023

Range: 0 - 180DEG
 Interval: 2.0DEG
 Test System:EVERFINE GO-2000B_V1 SYSTEM V2.0.403
 Humidity:65.0%
 Test Distance:10.365m [K=1.0000]
 Remarks: SMD BK-CWL013-0350A

ZONAL FLUX DIAGRAM

ZONAL FLUX DIAGRAM:

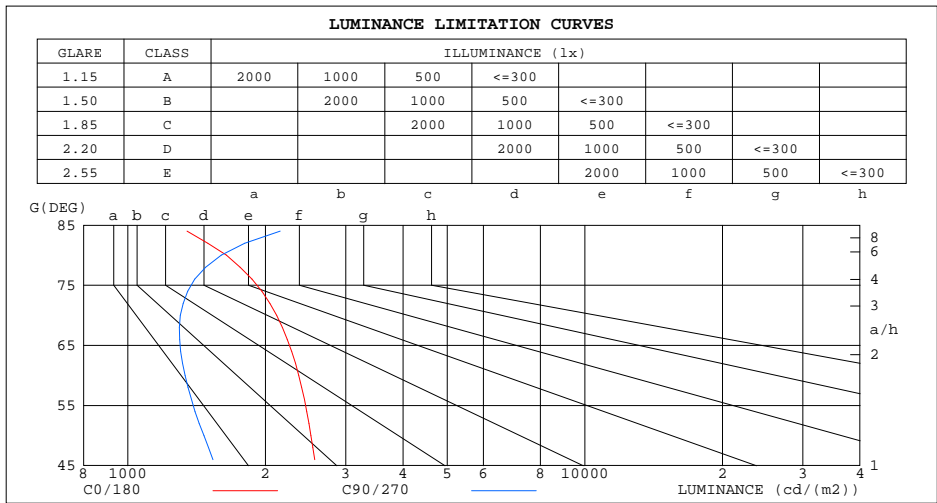
g	C0	C45	C90	C135	C180	C225	C270	C315	g	F zone	F total	%lum,lamp
10	274.8	249.3	240.2	248.3	272.4	301.5	316.3	303.8	0- 10	26.50	26.50	1.86,1.86
20	259.2	214.6	200.1	212.7	254.7	315.1	348.0	319.5	10- 20	76.72	103.2	7.23,7.23
30	233.9	176.8	161.6	174.6	227.8	319.2	372.3	326.2	20- 30	119.1	222.3	15.6,15.6
40	200.9	138.8	126.2	136.5	193.2	314.4	386.7	323.4	30- 40	149.7	371.9	26,26
50	161.8	102.2	94.34	100.4	153.5	300.6	389.6	311.1	40- 50	166.2	538.1	37.7,37.7
60	118.3	69.32	66.74	68.26	109.8	278.0	380.2	289.6	50- 60	168.0	706.1	49.4,49.4
70	72.41	41.84	44.56	41.64	64.42	248.0	359.8	260.2	60- 70	156.4	862.5	60.4,60.4
80	28.53	21.81	27.83	22.30	22.61	213.7	330.3	226.2	70- 80	135.0	997.4	69.9,69.9
90	2.180	10.07	16.24	10.68	1.741	179.7	294.6	191.6	80- 90	110.4	1108	77.6,77.6
100	2.721	5.466	9.549	5.783	2.376	145.3	254.4	159.7	90-100	89.39	1197	83.8,83.8
110	3.864	4.474	6.822	4.665	3.594	120.9	208.9	131.4	100-110	71.24	1268	88.8,88.8
120	5.530	4.743	6.027	4.842	5.084	99.79	164.7	106.2	110-120	55.37	1324	92.7,92.7
130	7.175	4.979	6.100	5.071	6.751	80.92	133.6	84.01	120-130	41.22	1365	95.6,95.6
140	7.716	5.185	6.115	5.248	7.538	64.43	102.9	66.41	130-140	28.95	1394	97.6,97.6
150	7.553	5.285	6.026	5.293	8.063	48.88	74.28	51.15	140-150	18.56	1413	98.9,98.9
160	8.062	5.351	5.584	5.682	8.778	25.71	50.16	33.57	150-160	10.16	1423	99.6,99.6
170	10.42	9.619	6.487	7.789	10.69	11.21	21.62	15.98	160-170	4.155	1427	99.9,99.9
180	12.17	12.16	8.984	11.91	12.16	12.22	9.043	11.95	170-180	1.087	1428	100,100
DEG	LUMINOUS INTENSITY:cd								UNIT:lm			

C Range: 0 - 360DEG
 C Interval: 10.0DEG
 Test Speed: HIGH
 Temperature:25.3DEG
 Operators:LQL
 Test Date:05 July 2023

g Range: 0 - 180DEG
 Interval: 2.0DEG
 Test System:EVERFINE GO-2000B_V1 SYSTEM V2.0.403
 Humidity:65.0%
 Test Distance:10.365m [K=1.0000]
 Remarks: SMD BK-CWL013-0350A

LUMINANCE LIMITATION CURVES

Test:U:230.68V I:0.0660A P:14.636W PF:0.9606 Freq:49.99Hz Lamp Flux:1427.92x1 lm		
NAME: Marilyn 12W	TYPE:	WEIGHT:
SPEC.:	DIM.:	SERIAL No.:
MFR.: CG LIGHTING	SUR.:	Shielding Angle:



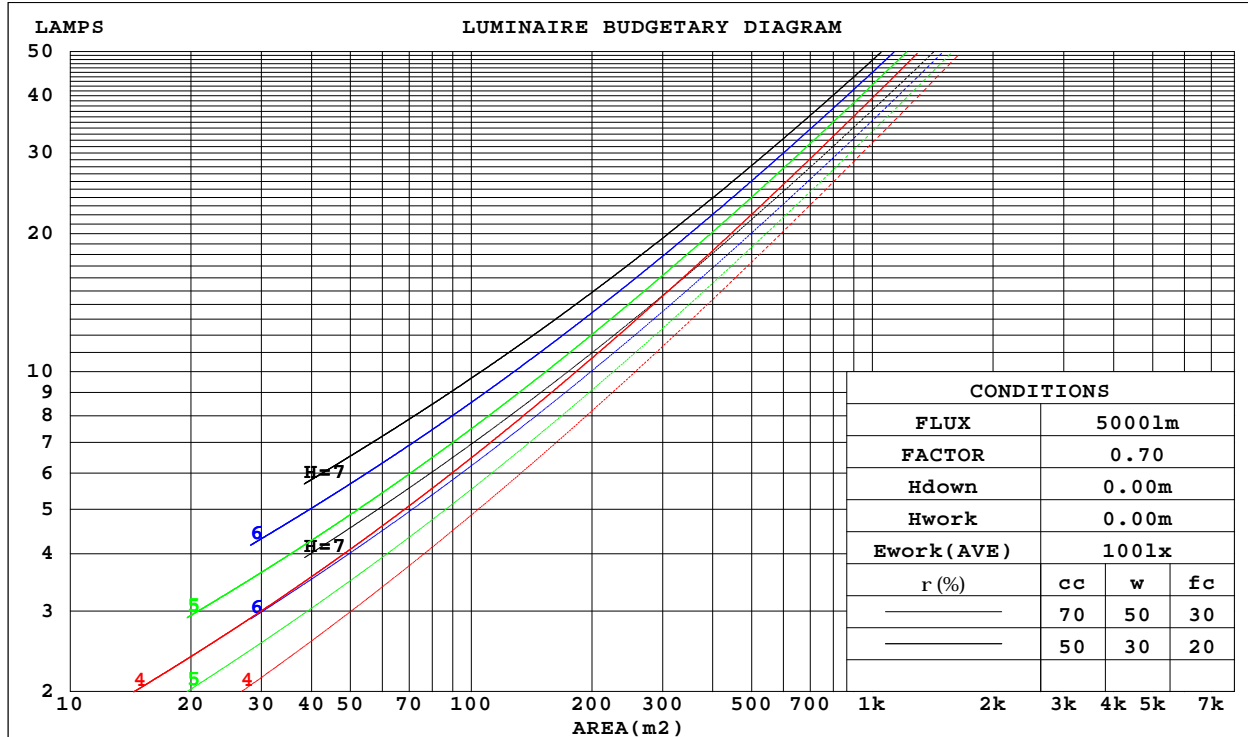
C Range: 0 - 360DEG
 C Interval: 10.0DEG
 Test Speed: HIGH
 Temperature: 25.3DEG
 Operators: LQL
 Test Date: 05 July 2023

G Range: 0 - 180DEG
 G Interval: 2.0DEG
 Test System: EVERFINE GO-2000B_V1 SYSTEM V2.0.403
 Humidity: 65.0%
 Test Distance: 10.365m [K=1.0000]
 Remarks: SMD BK-CWL013-0350A

CU AND LUMINAIRE BUDGETARY ESTIMATE DIAGRAM

Test:U:230.68V I:0.0660A P:14.636W PF:0.9606 Freq:49.99Hz Lamp Flux:1427.92x1 lm		
NAME: Marilyn 12W	TYPE:	WEIGHT:
SPEC.:	DIM.:	SERIAL No.:
MFR.: CG LIGHTING	SUR.:	Shielding Angle:

r _{cc}	80%			70%			50%			30%			10%			0
r _w	50%	30%	10%	50%	30%	10%	50%	30%	10%	50%	30%	10%	50%	30%	10%	0
r _{fc}	20%			20%			20%			20%			20%			0
RCR	RCR:Room Cavity Ratio						Coefficients of Utilization(CU)									
0.0	1.14	1.14	1.14	1.08	1.08	1.08	.99	.99	.99	.90	.90	.90	.81	.81	.81	.78
1.0	.94	.89	.84	.90	.85	.81	.81	.78	.74	.74	.71	.68	.66	.64	.62	.58
2.0	.81	.73	.66	.77	.70	.64	.69	.64	.59	.63	.58	.54	.57	.53	.50	.46
3.0	.70	.61	.54	.66	.58	.52	.60	.53	.48	.54	.49	.44	.49	.45	.41	.37
4.0	.61	.52	.45	.58	.50	.43	.53	.46	.40	.48	.42	.37	.43	.38	.34	.31
5.0	.54	.45	.38	.52	.43	.37	.47	.40	.34	.43	.37	.32	.39	.33	.29	.26
6.0	.49	.39	.33	.46	.38	.31	.42	.35	.29	.38	.32	.27	.35	.30	.25	.23
7.0	.44	.35	.28	.42	.33	.27	.38	.31	.26	.35	.29	.24	.32	.26	.22	.20
8.0	.40	.31	.25	.38	.30	.24	.35	.28	.23	.32	.26	.21	.29	.24	.20	.18
9.0	.36	.28	.22	.35	.27	.22	.32	.25	.20	.29	.23	.19	.27	.22	.18	.16
10.0	.33	.25	.20	.32	.24	.19	.29	.23	.18	.27	.21	.17	.25	.20	.16	.14



C Range: 0 - 360DEG
 C Interval: 10.0DEG
 Test Speed: HIGH
 Temperature:25.3DEG
 Operators:LQL
 Test Date:05 July 2023

Range: 0 - 180DEG
 Interval: 2.0DEG
 Test System:EVERFINE GO-2000B_V1 SYSTEM V2.0.403
 Humidity:65.0%
 Test Distance:10.365m [K=1.0000]
 Remarks: SMD BK-CWL013-0350A

WEC AND CCEC

Test:U:230.68V I:0.0660A P:14.636W PF:0.9606 Freq:49.99Hz Lamp Flux:1427.92x1 lm		
NAME: Marilyn 12W	TYPE:	WEIGHT:
SPEC.:	DIM.:	SERIAL No.:
MFR.: CG LIGHTING	SUR.:	Shielding Angle:

rcc	80%			70%			50%			30%			10%			0
rw	50%	30%	10%	50%	30%	10%	50%	30%	10%	50%	30%	10%	50%	30%	10%	0
rfc	20%			20%			20%			20%			20%			0
RCR	RCR:Room Cavity Ratio						Wall Exitance Coefficients(WEC)									
0.0																
1.0	.388	.221	.070	.374	.213	.068	.348	.200	.064	.324	.187	.060	.301	.175	.056	
2.0	.334	.183	.056	.322	.177	.055	.298	.166	.051	.276	.155	.048	.256	.145	.046	
3.0	.296	.158	.047	.285	.153	.046	.263	.143	.043	.243	.133	.041	.225	.124	.038	
4.0	.266	.138	.041	.256	.134	.040	.236	.125	.037	.218	.117	.035	.201	.109	.033	
5.0	.242	.123	.036	.232	.119	.035	.214	.112	.033	.198	.104	.031	.182	.097	.029	
6.0	.221	.111	.032	.213	.108	.031	.196	.101	.029	.181	.094	.028	.167	.088	.026	
7.0	.204	.101	.029	.196	.098	.028	.181	.092	.026	.167	.086	.025	.154	.080	.024	
8.0	.189	.092	.026	.182	.090	.025	.168	.084	.024	.155	.079	.023	.143	.073	.021	
9.0	.176	.085	.024	.170	.083	.023	.157	.078	.022	.145	.073	.021	.133	.068	.020	
10.0	.165	.079	.022	.159	.077	.021	.147	.072	.020	.136	.067	.019	.125	.063	.018	

rcc	80%			70%			50%			30%			10%			0
rw	50%	30%	10%	50%	30%	10%	50%	30%	10%	50%	30%	10%	50%	30%	10%	0
rfc	20%			20%			20%			20%			20%			0
RCR	RCR:Room Cavity Ratio						Ceiling Cavity Exitance Coefficients(CCEC)									
0.0	.361	.361	.361	.309	.309	.309	.211	.211	.211	.121	.121	.121	.039	.039	.039	
1.0	.358	.328	.300	.306	.281	.259	.209	.193	.179	.121	.112	.104	.039	.036	.034	
2.0	.351	.305	.266	.301	.263	.230	.206	.182	.161	.119	.106	.094	.038	.034	.031	
3.0	.344	.289	.245	.295	.249	.212	.202	.173	.149	.117	.101	.088	.038	.033	.029	
4.0	.336	.276	.231	.288	.239	.201	.198	.166	.141	.115	.098	.084	.037	.032	.027	
5.0	.329	.267	.221	.282	.231	.192	.194	.161	.136	.113	.095	.081	.036	.031	.027	
6.0	.321	.259	.214	.276	.224	.187	.190	.157	.132	.110	.092	.078	.036	.030	.026	
7.0	.314	.252	.209	.270	.219	.182	.187	.153	.129	.108	.090	.077	.035	.030	.025	
8.0	.307	.247	.205	.265	.214	.179	.183	.150	.127	.107	.089	.076	.034	.029	.025	
9.0	.301	.242	.202	.259	.210	.176	.180	.148	.125	.105	.087	.075	.034	.029	.025	
10.0	.295	.238	.200	.255	.207	.174	.177	.145	.124	.103	.086	.074	.033	.028	.025	

C Range: 0 - 360DEG
 C Interval: 10.0DEG
 Test Speed: HIGH
 Temperature:25.3DEG
 Operators:LQL
 Test Date:05 July 2023

g Range: 0 - 180DEG
 g Interval: 2.0DEG
 Test System:EVERFINE GO-2000B_V1 SYSTEM V2.0.403
 Humidity:65.0%
 Test Distance:10.365m [K=1.0000]
 Remarks: SMD BK-CWL013-0350A

UGR(Unified Glare Rating) Table

Test:U:230.68V I:0.0660A P:14.636W PF:0.9606 Freq:49.99Hz Lamp Flux:1427.92x1 lm										
NAME: Marilyn 12W					TYPE:			WEIGHT:		
SPEC.:					DIM.:			SERIAL No.:		
MFR.: CG LIGHTING					SUR.:			Shielding Angle:		
ceiling/cavity	0.7	0.7	0.5	0.5	0.3	0.7	0.7	0.5	0.5	0.3
walls	0.5	0.3	0.5	0.3	0.3	0.5	0.3	0.5	0.3	0.3
working plane	0.2	0.2	0.2	0.2	0.2	0.2	0.2	0.2	0.2	0.2
Room dimensions	Viewed crosswise					Viewed endwise				
x = 2H y = 2H	10.4	11.8	11.0	12.3	13.0	8.5	9.8	9.1	10.4	11.0
3H	11.8	13.0	12.4	13.6	14.3	9.9	11.1	10.5	11.7	12.4
4H	12.4	13.5	13.0	14.1	14.8	10.6	11.8	11.3	12.4	13.1
6H	12.7	13.8	13.3	14.4	15.2	11.4	12.5	12.0	13.1	13.9
8H	12.8	13.9	13.4	14.5	15.3	11.8	12.8	12.4	13.5	14.2
12H	12.8	13.9	13.5	14.5	15.3	12.2	13.3	12.9	13.9	14.7
4H 2H	10.5	11.7	11.1	12.3	13.0	9.0	10.1	9.6	10.8	11.5
3H	12.0	13.1	12.7	13.7	14.5	10.6	11.6	11.2	12.3	13.0
4H	12.6	13.6	13.3	14.2	15.0	11.5	12.4	12.1	13.1	13.9
6H	13.1	13.9	13.8	14.6	15.4	12.4	13.2	13.1	13.9	14.7
8H	13.2	14.0	13.9	14.7	15.5	12.9	13.7	13.6	14.4	15.2
12H	13.2	14.0	14.0	14.7	15.6	13.4	14.2	14.2	14.9	15.8
8H 4H	12.7	13.5	13.4	14.2	15.0	11.6	12.4	12.4	13.1	14.0
6H	13.2	13.9	14.0	14.6	15.5	12.8	13.4	13.5	14.2	15.1
8H	13.4	14.0	14.2	14.8	15.7	13.4	14.0	14.2	14.8	15.7
12H	13.5	14.1	14.3	14.8	15.8	14.2	14.7	15.0	15.5	16.5
12H 4H	12.7	13.4	13.4	14.2	15.0	11.6	12.4	12.4	13.1	13.9
6H	13.3	13.9	14.0	14.6	15.5	12.8	13.4	13.6	14.2	15.1
8H	13.5	14.0	14.3	14.8	15.7	13.6	14.1	14.3	14.9	15.8
Variations with the observer position at spacings:										
S = 1.0H	+ 0.3 / - 0.3					+ 0.2 / - 0.2				
1.5H	+ 0.7 / - 0.7					+ 0.2 / - 0.3				
2.0H	+ 1.3 / - 1.2					+ 0.1 / - 0.2				

CIE Pub.117, 1428 lm Total Lamp Luminous Flux Correct (8log(F/F0) = 1.2)

C Range: 0 - 360DEG
 C Interval: 10.0DEG
 Test Speed: HIGH
 Temperature:25.3DEG
 Operators:LQL
 Test Date:05 July 2023

g Range: 0 - 180DEG
 g Interval: 2.0DEG
 Test System:EVERFINE GO-2000B_V1 SYSTEM V2.0.403
 Humidity:65.0%
 Test Distance:10.365m [K=1.0000]
 Remarks: SMD BK-CWL013-0350A

UTILIZATION FACTORS TABLE

Test:U:230.68V I:0.0660A P:14.636W PF:0.9606 Freq:49.99Hz Lamp Flux:1427.92x1 lm		
NAME: Marilyn 12W	TYPE:	WEIGHT:
SPEC.:	DIM.:	SERIAL No.:
MFR.: CG LIGHTING	SUR.:	Shielding Angle:

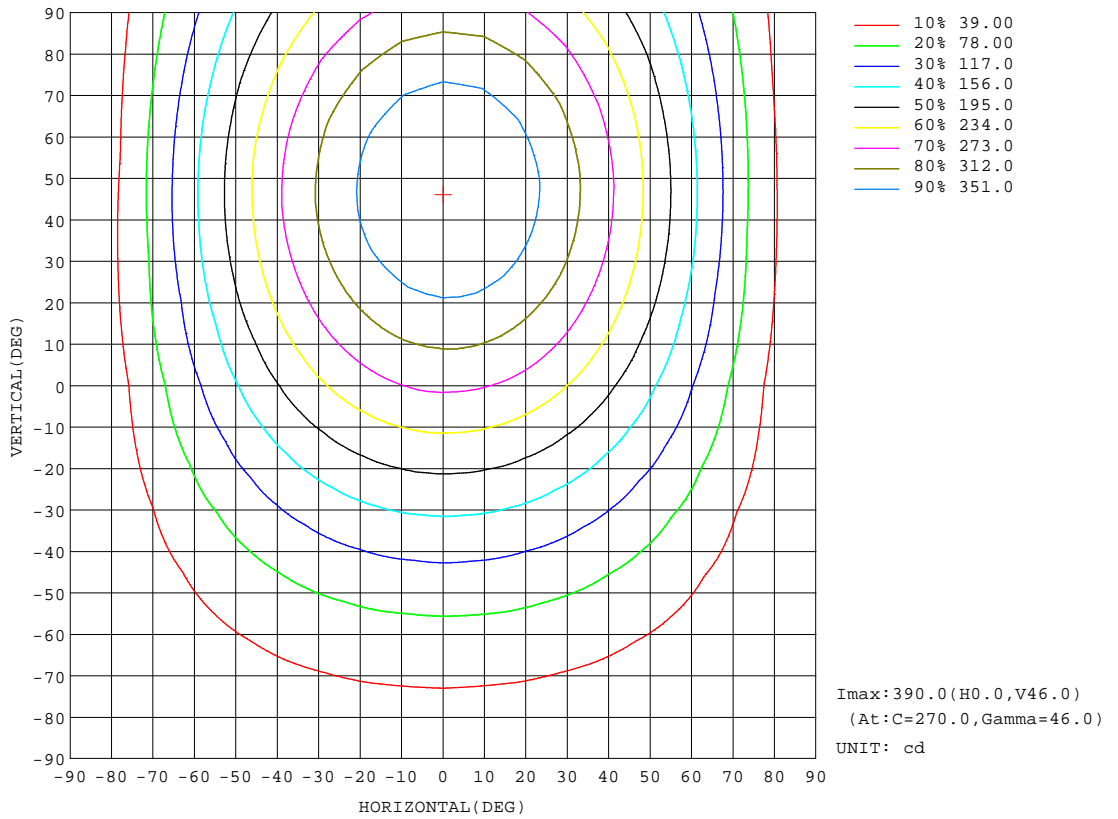
REFLECTANCE										
Ceiling	0.8	0.8	0.8	0.7	0.7	0.7	0.5	0.5	0.5	0
Walls	0.7	0.5	0.3	0.7	0.5	0.3	0.7	0.5	0.3	0
Working plane	0.2	0.2	0.2	0.2	0.2	0.2	0.2	0.2	0.2	0
ROOM INDEX	UTILIZATION FACTORS(PERCENT) $k(RI) \times RCR = 5$									
k = 0.60	46	34	26	45	33	26	43	32	26	19
0.80	55	42	34	53	41	33	50	40	33	24
1.00	63	50	41	61	49	41	57	49	39	30
1.25	70	57	48	67	55	47	62	52	45	35
1.50	75	62	54	72	61	52	67	57	50	39
2.00	82	71	62	79	69	61	73	64	58	45
2.50	87	76	68	83	74	66	76	68	62	49
3.00	91	81	73	87	78	71	79	72	67	52
4.00	95	87	80	91	84	78	83	77	72	57
5.00	98	91	85	94	88	82	86	81	76	60
ROOM INDEX	UF(total)									Direct
According to DIN EN 13032-2 2004			Suspended				SHRNOM = 1.25			

C Range: 0 - 360DEG
 C Interval: 10.0DEG
 Test Speed: HIGH
 Temperature:25.3DEG
 Operators:LQL
 Test Date:05 July 2023

g Range: 0 - 180DEG
 Interval: 2.0DEG
 Test System:EVERFINE GO-2000B_V1 SYSTEM V2.0.403
 Humidity:65.0%
 Test Distance:10.365m [K=1.0000]
 Remarks: SMD BK-CWL013-0350A

ISOCANDELA DIAGRAM

Test:U:230.68V I:0.0660A P:14.636W PF:0.9606 Freq:49.99Hz Lamp Flux:1427.92x1 lm		
NAME: Marilyn 12W	TYPE:	WEIGHT:
SPEC.:	DIM.:	SERIAL No.:
MFR.: CG LIGHTING	SUR.:	Shielding Angle:

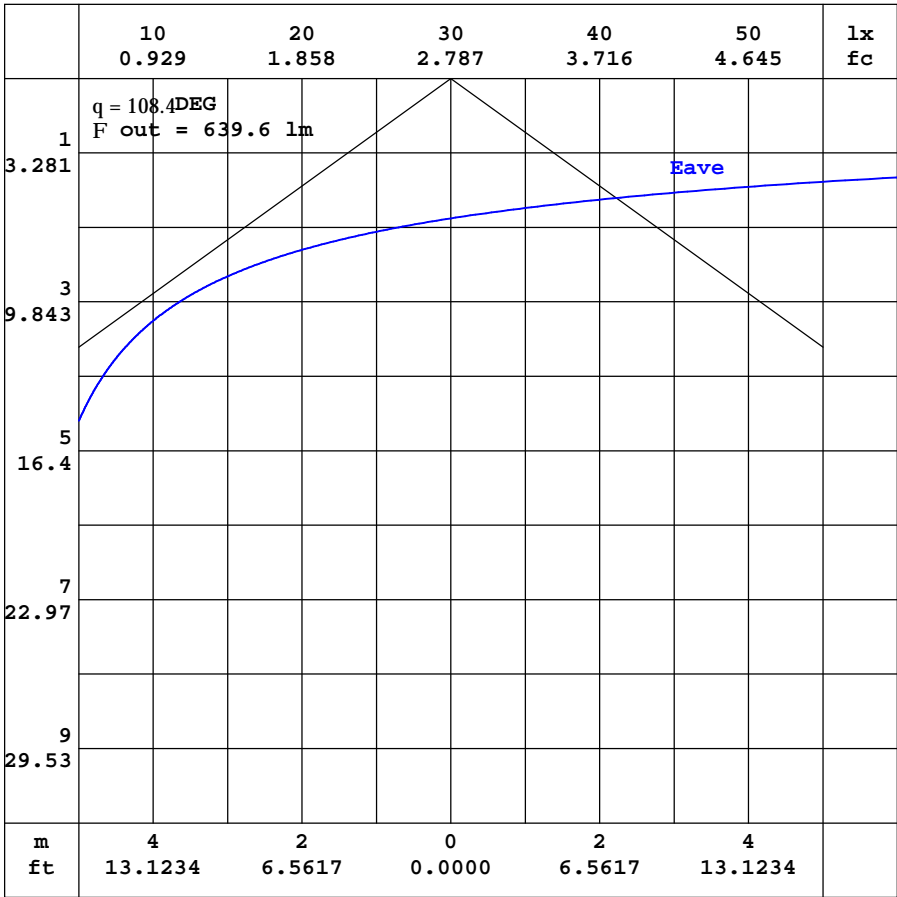


C Range: 0 - 360DEG
 C Interval: 10.0DEG
 Test Speed: HIGH
 Temperature:25.3DEG
 Operators:LQL
 Test Date:05 July 2023

Range: 0 - 180DEG
 Interval: 2.0DEG
 Test System:EVERFINE GO-2000B_V1 SYSTEM V2.0.403
 Humidity:65.0%
 Test Distance:10.365m [K=1.0000]
 Remarks: SMD BK-CWL013-0350A

AAI CURVES

Test:U:230.68V I:0.0660A P:14.636W PF:0.9606 Freq:49.99Hz Lamp Flux:1427.92x1 lm		
NAME: Marilyn 12W	TYPE:	WEIGHT:
SPEC.:	DIM.:	SERIAL No.:
MFR.: CG LIGHTING	SUR.:	Shielding Angle:



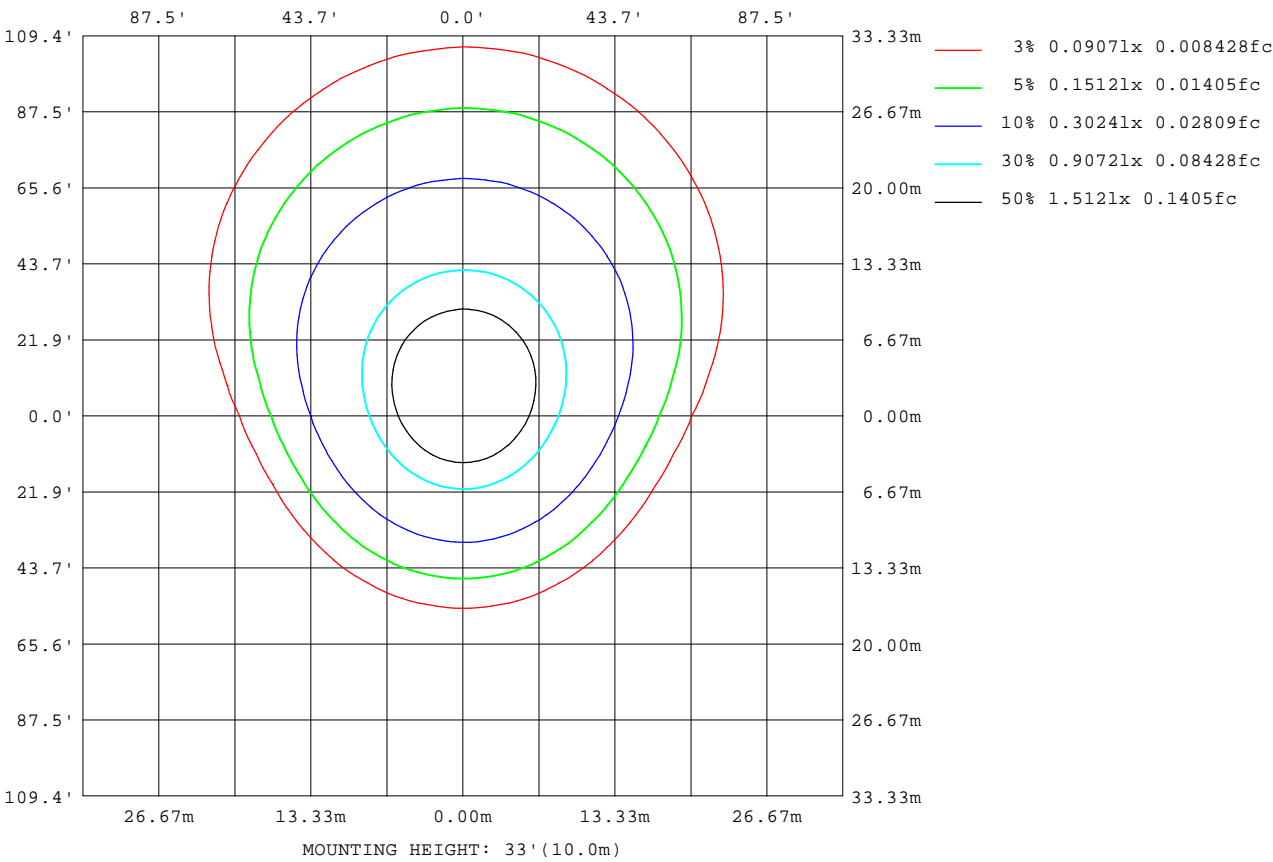
Note:The Curves indicate the illuminated area and the average illumination when the luminaire is at different distance.

C Range: 0 - 360DEG
 C Interval: 10.0DEG
 Test Speed: HIGH
 Temperature:25.3DEG
 Operators:LQL
 Test Date:05 July 2023

Range: 0 - 180DEG
 Interval: 2.0DEG
 Test System:EVERFINE GO-2000B_V1 SYSTEM V2.0.403
 Humidity:65.0%
 Test Distance:10.365m [K=1.0000]
 Remarks: SMD BK-CWL013-0350A

ISOLUX DIAGRAM

Test:U:230.68V I:0.0660A P:14.636W PF:0.9606 Freq:49.99Hz Lamp Flux:1427.92x1 lm		
NAME: Marilyn 12W	TYPE:	WEIGHT:
SPEC.:	DIM.:	SERIAL No.:
MFR.: CG LIGHTING	SUR.:	Shielding Angle:



C Range: 0 - 360DEG
 C Interval: 10.0DEG
 Test Speed: HIGH
 Temperature: 25.3DEG
 Operators: LQL
 Test Date: 05 July 2023

Range: 0 - 180DEG
 Interval: 2.0DEG
 Test System: EVERFINE GO-2000B_V1 SYSTEM V2.0.403
 Humidity: 65.0%
 Test Distance: 10.365m [K=1.0000]
 Remarks: SMD BK-CWL013-0350A

LED Avg.L Report

Test:U:230.68V I:0.0660A P:14.636W PF:0.9606 Freq:49.99Hz Lamp Flux:1427.92x1 lm		
NAME: Marilyn 12W	TYPE:	WEIGHT:
SPEC.:	DIM.:	SERIAL No.:
MFR.: CG LIGHTING	SUR.:	Shielding Angle:

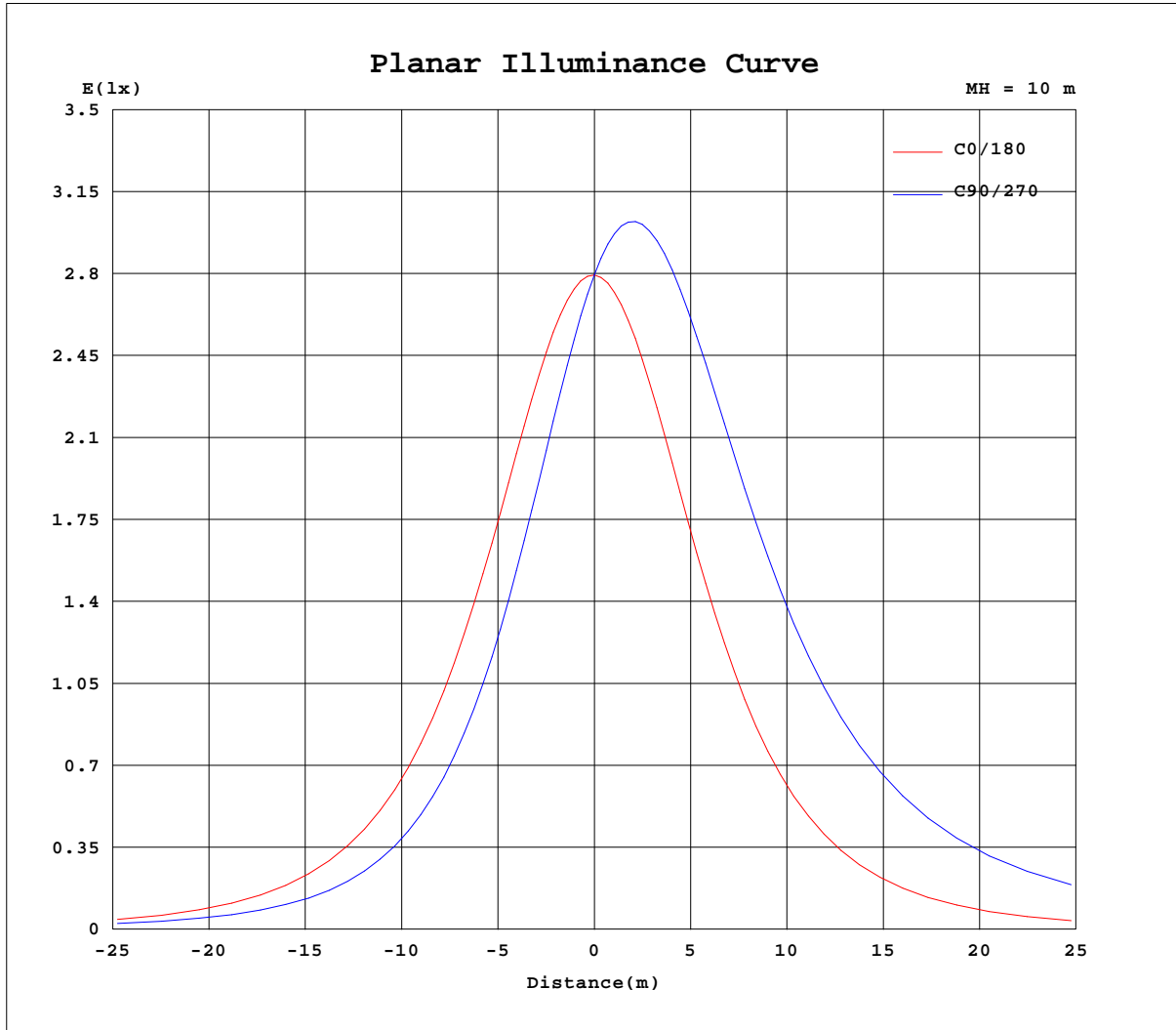
AvgL	cd/m2
L_0~180(65)av	2161
L_0~180(75)av	1780
L_0~180(85)av	1066
L_90~270(65)av	5042
L_90~270(75)av	7369
L_90~270(85)av	19190
L_45(65)av	3842
L_45(75)av	5191
L_45(85)av	12538

Standard: GB/T 29293-2012

C Range: 0 - 360DEG
 C Interval: 10.0DEG
 Test Speed: HIGH
 Temperature:25.3DEG
 Operators:LQL
 Test Date:05 July 2023

g Range: 0 - 180DEG
 g Interval: 2.0DEG
 Test System:EVERFINE GO-2000B_V1 SYSTEM V2.0.403
 Humidity:65.0%
 Test Distance:10.365m [K=1.0000]
 Remarks: SMD BK-CWL013-0350A

Planar Illuminance Curve



C Range: 0 - 360DEG
 C Interval: 10.0DEG
 Test Speed: HIGH
 Temperature: 25.3DEG
 Operators: LQL
 Test Date: 05 July 2023

Page Range: 0 - 180DEG
 Interval: 2.0DEG
 Test System: EVERFINE GO-2000B_V1 SYSTEM V2.0.403
 Humidity: 65.0%
 Test Distance: 10.365m [K=1.0000]
 Remarks: SMD BK-CWL013-0350A

LUMINOUS DISTRIBUTION INTENSITY DATA

Test:U:230.68V I:0.0660A P:14.636W PF:0.9606 Freq:49.99Hz Lamp Flux:1427.92x1 lm		
NAME: Marilyn 12W	TYPE:	WEIGHT:
SPEC.:	DIM.:	SERIAL No.:
MFR.: CG LIGHTING	SUR.:	Shielding Angle:

Table--1

UNIT: cd

C(DEG) g (DEG)	0	10	20	30	40	50	60	70	80	90	100	110	120	130	140	150	160	170	180
0	279	279	279	279	279	279	279	279	279	280	279	280	280	280	279	280	280	280	279
5	279	276	273	271	269	267	265	265	264	264	264	265	266	267	269	271	273	276	278
10	275	268	262	256	251	247	244	242	240	240	240	242	243	247	250	255	260	267	272
15	270	261	252	245	238	234	229	226	224	224	224	226	228	232	237	243	250	258	267
20	259	247	235	226	218	211	206	203	201	200	200	202	205	210	215	223	232	243	255
25	250	236	223	212	203	196	191	188	185	184	185	187	190	195	201	209	219	231	245
30	234	217	202	190	180	173	168	165	162	162	162	164	167	171	178	187	198	212	228
35	222	203	187	175	165	158	153	150	147	147	147	149	152	156	162	171	182	197	215
40	201	180	163	151	142	136	131	128	126	126	126	128	130	134	139	148	159	174	193
45	186	164	147	136	127	121	117	115	113	113	113	114	116	119	124	132	143	158	178
50	162	139	122	112	104	100	97.0	95.7	94.4	94.3	93.8	94.9	95.8	98.7	102	109	118	133	153
55	145	122	106	96.6	90.0	87.0	84.5	83.7	82.8	82.5	82.2	83.0	83.5	85.7	88.2	93.8	102	116	136
60	118	96.1	81.7	74.6	70.1	68.5	67.3	67.3	66.6	66.7	66.3	66.8	66.6	67.7	68.8	72.5	78.3	90.3	110
65	100	78.7	66.1	60.9	57.8	57.3	56.7	57.3	56.8	57.3	56.8	57.0	56.4	56.8	56.9	59.3	63.1	73.5	91.7
70	72.4	53.3	44.5	42.2	41.4	42.3	42.8	43.8	44.1	44.6	44.2	43.9	42.8	42.2	41.1	41.4	42.6	49.1	64.4
75	54.2	37.6	31.9	31.6	32.0	33.7	34.8	36.2	36.7	37.3	36.8	36.4	35.0	33.9	32.1	31.2	30.7	34.4	46.7
80	28.5	17.8	16.7	18.7	20.6	23.1	24.8	26.5	27.2	27.8	27.4	26.8	25.2	23.5	21.1	18.9	16.6	16.3	22.6
85	14.1	8.45	9.73	12.4	14.8	17.5	19.4	21.1	22.0	22.5	22.2	21.4	19.8	18.0	15.4	12.9	10.0	8.06	9.95
90	2.18	2.34	4.16	6.55	8.83	11.3	13.1	14.8	15.7	16.2	15.9	15.2	13.6	11.9	9.45	7.08	4.52	2.48	1.74
95	2.10	1.95	2.97	4.62	6.48	8.56	10.2	11.7	12.5	13.0	12.7	12.0	10.7	9.08	7.01	5.01	3.16	1.90	1.85
100	2.72	2.17	2.62	3.49	4.77	6.16	7.48	8.57	9.21	9.55	9.32	8.76	7.75	6.48	5.08	3.70	2.69	2.10	2.38
105	3.13	2.35	2.74	3.38	4.35	5.33	6.43	7.29	7.88	8.06	7.89	7.41	6.64	5.60	4.58	3.49	2.76	2.29	2.86
110	3.86	2.61	3.01	3.59	4.12	4.83	5.69	6.20	6.70	6.82	6.67	6.28	5.78	5.05	4.28	3.70	3.06	2.60	3.59
115	4.53	2.80	3.19	3.76	4.23	4.85	5.37	5.83	6.25	6.39	6.21	5.86	5.43	4.92	4.34	3.86	3.27	2.80	4.15
120	5.53	3.08	3.43	3.98	4.45	5.03	5.41	5.81	5.90	6.03	5.85	5.69	5.42	5.10	4.58	4.12	3.53	3.11	5.08
125	6.20	3.28	3.63	4.14	4.59	5.10	5.54	5.86	6.03	6.07	5.88	5.74	5.55	5.17	4.71	4.27	3.70	3.33	5.76
130	7.18	4.07	3.86	4.35	4.74	5.22	5.56	5.89	6.05	6.10	5.96	5.75	5.55	5.31	4.83	4.48	3.98	3.63	6.75
135	7.77	4.72	4.01	4.49	4.84	5.30	5.57	5.88	6.04	6.12	5.98	5.76	5.60	5.37	4.95	4.60	4.12	4.06	7.37
140	7.72	5.63	4.26	4.69	5.01	5.36	5.59	5.85	6.03	6.11	6.03	5.78	5.65	5.42	5.07	4.77	4.35	5.24	7.54
145	7.52	6.21	4.40	4.81	5.07	5.40	5.59	5.80	6.03	6.03	5.98	5.78	5.66	5.42	5.09	4.87	4.47	5.93	7.54
150	7.55	6.84	5.26	4.95	5.16	5.41	5.58	5.73	5.94	6.03	5.92	5.74	5.64	5.42	5.16	4.96	4.83	6.88	8.06
155	7.79	7.22	6.11	5.08	5.19	5.41	5.57	5.67	5.85	5.88	5.89	5.68	5.62	5.42	5.19	5.05	5.78	7.29	8.37
160	8.06	7.58	7.20	6.76	5.28	5.42	5.55	5.55	5.66	5.58	5.64	5.60	5.53	5.69	5.67	5.83	7.06	7.78	8.78
165	8.25	7.87	7.99	8.29	6.97	5.46	5.41	5.39	5.47	5.53	5.55	5.53	5.49	5.87	5.99	6.93	7.66	8.03	8.98
170	10.4	10.00	9.76	9.95	10.00	9.24	8.41	7.73	7.35	6.49	6.52	6.72	6.98	7.40	8.18	8.91	9.34	9.81	10.7
175	11.9	11.6	11.3	11.1	10.8	10.8	10.4	10.3	8.24	7.94	7.91	8.02	8.46	9.54	10.2	10.6	10.9	11.3	12.1
180	12.2	12.2	12.2	12.2	12.2	12.2	11.5	9.46	8.98	8.98	9.97	11.4	11.8	11.9	11.9	11.9	11.9	11.9	12.2

C Range: 0 - 360DEG
 C Interval: 10.0DEG
 Test Speed: HIGH
 Temperature:25.3DEG
 Operators:LQL
 Test Date:05 July 2023

g Range: 0 - 180DEG
 Interval: 2.0DEG
 Test System:EVERFINE GO-2000B_V1 SYSTEM V2.0.403
 Humidity:65.0%
 Test Distance:10.365m [K=1.0000]
 Remarks: SMD BK-CWL013-0350A

LUMINOUS DISTRIBUTION INTENSITY DATA

Test:U:230.68V I:0.0660A P:14.636W PF:0.9606 Freq:49.99Hz Lamp Flux:1427.92x1 lm		
NAME: Marylin 12W	TYPE:	WEIGHT:
SPEC.:	DIM.:	SERIAL No.:
MFR.: CG LIGHTING	SUR.:	Shielding Angle:

Table--2

UNIT: cd

C(DEG) g (DEG)	190	200	210	220	230	240	250	260	270	280	290	300	310	320	330	340	350		
0	279	279	279	279	279	279	279	279	280	279	280	280	280	279	280	280	280		
5	281	283	286	288	290	292	293	294	295	294	294	293	291	289	287	285	282		
10	279	286	292	299	304	309	313	315	316	316	314	311	306	301	295	289	282		
15	276	285	295	304	312	319	324	328	330	329	326	321	315	307	299	289	280		
20	268	281	295	309	321	332	340	345	348	347	343	335	325	314	301	287	273		
25	260	277	294	310	326	339	349	355	359	357	352	343	330	316	300	283	267		
30	246	267	288	309	329	346	360	368	372	370	364	352	336	317	296	275	254		
35	235	259	283	307	330	349	365	375	379	377	369	355	337	315	291	267	244		
40	216	244	272	301	328	351	369	381	387	384	375	358	336	311	282	254	226		
45	203	232	264	295	325	350	370	384	389	387	376	358	334	305	274	243	213		
50	180	213	248	284	317	346	368	383	390	387	374	354	327	295	260	225	191		
55	164	200	237	275	310	340	365	381	387	384	371	349	320	287	249	212	175		
60	139	178	218	259	297	330	356	373	380	377	362	339	308	272	231	191	151		
65	122	162	205	247	286	321	348	366	373	369	354	330	297	260	218	176	134		
70	94.8	138	183	228	268	304	333	352	360	356	340	314	280	240	197	152	107		
75	76.8	121	168	214	255	292	321	341	349	345	329	302	267	227	182	136	89.6		
80	51.0	97.2	145	192	235	273	302	323	330	327	310	283	247	206	159	112	63.8		
85	35.8	82.3	131	179	221	259	288	309	317	313	296	269	233	192	145	96.6	48.5		
90	20.4	64.2	112	159	201	238	267	287	295	291	274	248	212	171	125	77.8	31.5		
95	16.0	55.5	101	146	187	224	252	272	279	275	259	233	198	158	114	68.0	25.3		
100	14.1	45.9	85.8	127	164	199	227	247	254	251	236	212	179	141	99.0	57.3	20.7		
105	14.1	42.3	78.8	117	151	183	208	228	237	235	220	197	166	130	90.7	52.1	19.4		
110	15.1	38.7	70.5	105	137	166	184	200	209	209	196	175	148	115	79.8	45.9	19.5		
115	15.4	37.1	65.7	97.4	127	154	173	183	191	192	180	160	136	106	73.4	42.8	19.8		
120	15.1	35.2	59.6	86.8	113	137	154	165	165	166	157	139	119	93.0	65.0	40.0	19.9		
125	14.4	34.2	55.9	80.3	104	125	142	152	149	151	142	126	109	85.1	60.2	38.6	19.2		
130	12.9	32.8	50.8	71.1	90.8	109	123	132	134	128	121	108	93.9	74.2	54.5	36.3	17.6		
135	11.9	31.1	47.8	65.4	82.7	98.5	111	119	122	116	109	98.5	84.7	68.2	51.0	34.8	16.1		
140	11.7	27.6	43.4	57.6	71.3	83.9	93.7	101	103	98.5	93.0	84.6	72.9	60.0	45.9	31.1	13.6		
145	11.1	23.8	39.8	52.6	64.3	75.0	83.2	88.9	90.8	86.8	82.8	75.7	65.8	54.6	42.4	28.0	12.8		
150	9.72	16.5	30.0	43.3	54.5	62.4	68.5	72.8	74.3	70.5	68.5	63.0	55.5	46.8	35.7	22.6	12.8		
155	9.74	12.4	23.1	34.5	45.4	54.9	59.6	63.1	64.1	61.2	59.7	55.1	48.9	40.6	30.4	18.7	12.9		
160	9.76	10.9	14.6	22.0	29.4	38.2	46.5	49.4	50.2	49.7	46.5	42.7	37.0	30.1	21.7	15.1	12.4		
165	9.77	10.5	11.6	15.2	20.2	25.7	33.2	38.7	39.4	39.0	36.1	32.9	28.2	22.5	16.5	14.4	12.1		
170	11.1	11.4	11.2	11.0	11.5	12.0	13.5	17.4	21.6	21.2	19.3	17.6	16.5	15.5	14.6	13.6	11.9		
175	12.4	12.6	12.4	12.0	10.8	10.5	10.6	10.6	15.4	15.4	14.6	14.5	14.4	13.9	13.5	12.9	12.4		
180	12.2	12.2	12.3	12.2	12.2	11.4	9.43	9.04	9.04	10.2	11.5	11.7	12.0	11.9	12.0	12.0	11.9		

C Range: 0 - 360DEG
 C Interval: 10.0DEG
 Test Speed: HIGH
 Temperature:25.3DEG
 Operators:LQL
 Test Date:05 July 2023

g Range: 0 - 180DEG
 Interval: 2.0DEG
 Test System:EVERFINE GO-2000B_V1 SYSTEM V2.0.403
 Humidity:65.0%
 Test Distance:10.365m [K=1.0000]
 Remarks: SMD BK-CWL013-0350A