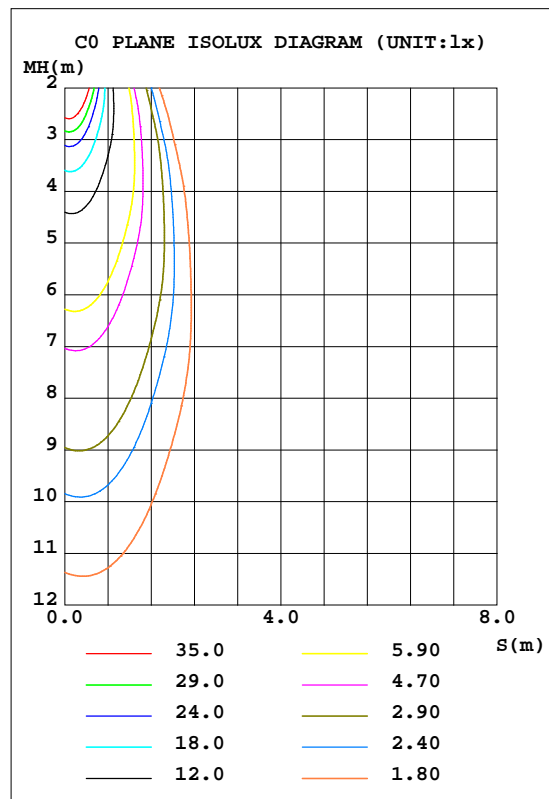
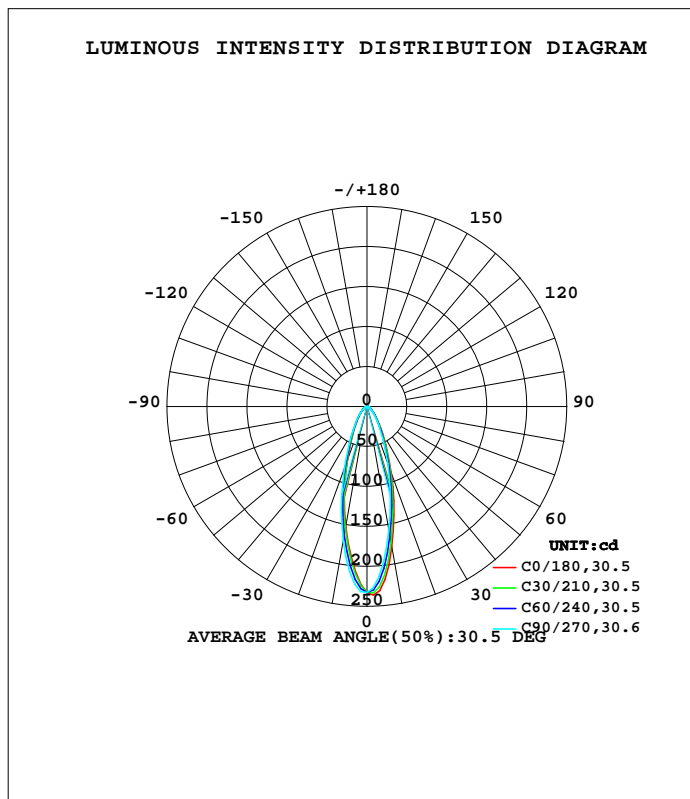


LUMINAIRE PHOTOMETRIC TEST REPORT

Test:U:230.74V I:0.0170A P:1.6763W PF:0.4268 Freq:49.99Hz Lamp Flux:112.264x1 lm		
NAME: IVED reading light with R2 base	TYPE:	WEIGHT:
SPEC.:	DIM.:	SERIAL No.:
MFR.: CG LIGHTING	SUR.:	Shielding Angle:

DATA OF LAMP		PHOTOMETRIC DATA			
MODEL	1143-0008	Imax(cd)	236.2	S/MH(C0/180)	0.47
NOMINAL POWER(W)		LOR(%)	100.0	S/MH(C90/270)	0.52
RATED VOLTAGE(V)	230	TOTAL FLUX(lm)	112.26	h UP, DN(C0-180)	0.0,49.0
NOMINAL FLUX(lm)	112.264	CIE CLASS	DIRECT	h UP, DN(C180-360)	0.0,51.0
LAMPS INSIDE	1	h up(%)	0.0	CIBSE SHR NOM	0.50
TEST VOLTAGE(V)	230	h down(%)	100.0	CIBSE SHR MAX	0.55



C Range: 0 - 360DEG
 C Interval: 10.0DEG
 Test Speed: HIGH
 Temperature:25.3DEG
 Operators:LQL
 Test Date:10 July 2023

Range: 0 - 90DEG
 Interval: 2.0DEG
 Test System:EVERFINE GO-2000B_V1 SYSTEM V2.0.403
 Humidity:65.0%
 Test Distance:10.365m [K=1.0000]
 Remarks: 2ES103WW3200001 LSC4W350LRP UNI

ZONAL FLUX DIAGRAM

ZONAL FLUX DIAGRAM:

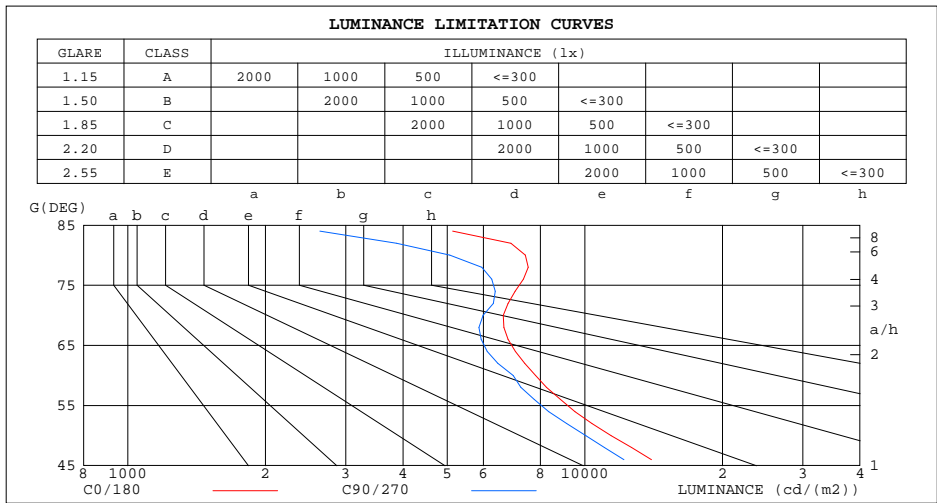
g	C0	C45	C90	C135	C180	C225	C270	C315	g	F zone	F total	%lum,lamp
10	179.0	169.7	158.6	153.1	153.9	160.0	171.4	181.4	0- 10	18.69	18.69	16.6,16.6
20	89.69	83.72	76.15	71.11	72.04	76.18	83.82	91.07	10- 20	32.98	51.67	46,46
30	39.48	36.14	33.49	31.20	32.09	33.20	35.62	38.45	20- 30	24.50	76.17	67.8,67.8
40	18.35	17.22	15.97	15.39	15.95	16.38	16.97	17.99	30- 40	15.25	91.42	81.4,81.4
50	9.222	8.834	8.116	7.687	7.982	8.235	8.437	8.958	40- 50	9.319	100.7	89.7,89.7
60	4.901	4.699	4.379	4.031	4.076	4.252	4.502	4.665	50- 60	5.526	106.3	94.7,94.7
70	2.849	2.729	2.574	2.626	2.485	2.607	2.730	2.692	60- 70	3.345	109.6	97.6,97.6
80	1.617	1.438	1.105	0.8893	0.8092	1.066	1.366	1.523	70- 80	2.194	111.8	99.6,99.6
90	0.0369	0.0369	0.0369	0.0369	0.0443	0.0406	0.0443	0.0443	80- 90	0.4625	112.3	100,100
100									90-100			
110									100-110			
120									110-120			
130									120-130			
140									130-140			
150									140-150			
160									150-160			
170									160-170			
180									170-180			
DEG	LUMINOUS INTENSITY:cd									UNIT:lm		

C Range: 0 - 360DEG
 C Interval: 10.0DEG
 Test Speed: HIGH
 Temperature:25.3DEG
 Operators:LQL
 Test Date:10 July 2023

g Range: 0 - 90DEG
 Interval: 2.0DEG
 Test System:EVERFINE GO-2000B_V1 SYSTEM V2.0.403
 Humidity:65.0%
 Test Distance:10.365m [K=1.0000]
 Remarks: 2ES103WW3200001 LSC4W350LRP UNI

LUMINANCE LIMITATION CURVES

Test:U:230.74V I:0.0170A P:1.6763W PF:0.4268 Freq:49.99Hz Lamp Flux:112.264x1 lm		
NAME: IVED reading light with R2 base	TYPE:	WEIGHT:
SPEC.:	DIM.:	SERIAL No.:
MFR.: CG LIGHTING	SUR.:	Shielding Angle:



LUMINANCE cd/(m2)		
G(DEG)	C0/180	C90/270
85	6162	3156
80	7415	5065
75	7492	6780
70	6631	5991
65	7315	6348
60	7804	6973
55	9745	8546
50	11423	10053
45	15760	13805

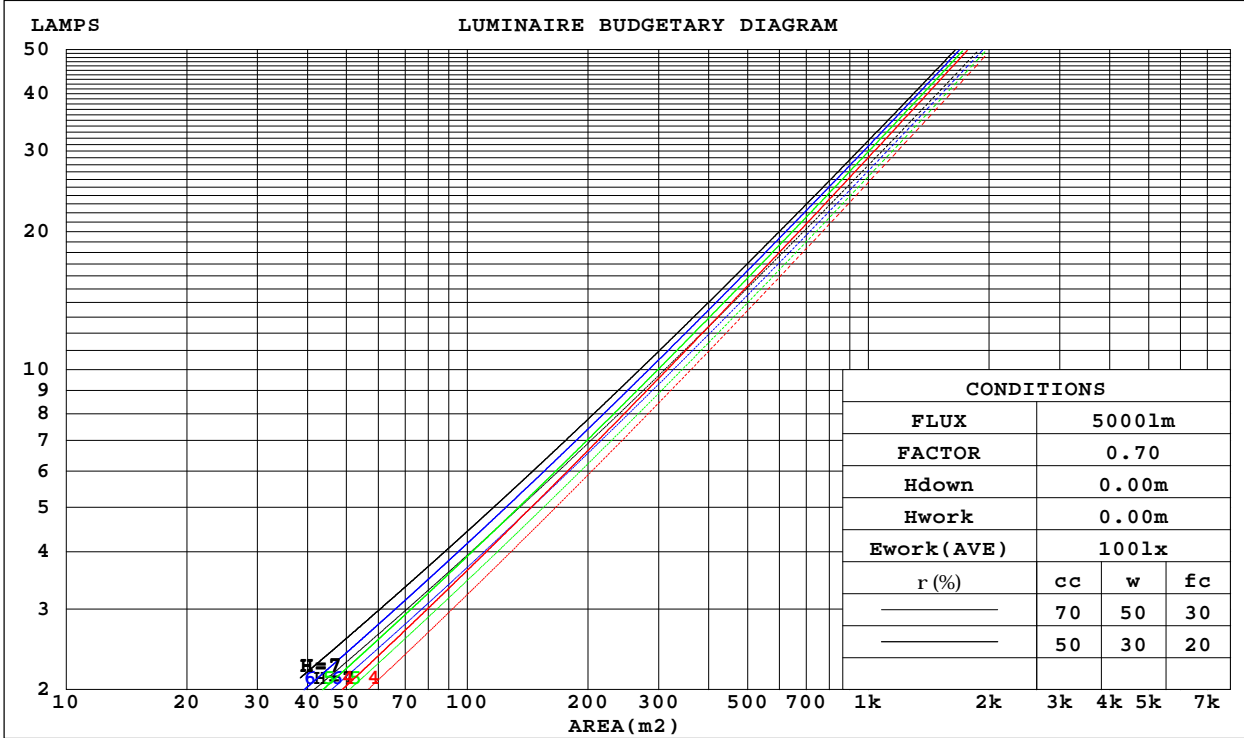
C Range: 0 - 360DEG
 C Interval: 10.0DEG
 Test Speed: HIGH
 Temperature:25.3DEG
 Operators:LQL
 Test Date:10 July 2023

G Range: 0 - 90DEG
 G Interval: 2.0DEG
 Test System:EVERFINE GO-2000B_V1 SYSTEM V2.0.403
 Humidity:65.0%
 Test Distance:10.365m [K=1.0000]
 Remarks: 2ES103WW3200001 LSC4W350LRP UNI

CU AND LUMINAIRE BUDGETARY ESTIMATE DIAGRAM

Test:U:230.74V I:0.0170A P:1.6763W PF:0.4268 Freq:49.99Hz Lamp Flux:112.264x1 lm		
NAME: IVED reading light with R2 base	TYPE:	WEIGHT:
SPEC.:	DIM.:	SERIAL No.:
MFR.: CG LIGHTING	SUR.:	Shielding Angle:

r _{cc}	80%			70%			50%			30%			10%			0
r _w	50%	30%	10%	50%	30%	10%	50%	30%	10%	50%	30%	10%	50%	30%	10%	0
r _{fc}	20%			20%			20%			20%			20%			0
RCR	RCR:Room Cavity Ratio						Coefficients of Utilization(CU)									
0.0	1.19	1.19	1.19	1.16	1.16	1.16	1.11	1.11	1.11	1.06	1.06	1.06	1.02	1.02	1.02	1.00
1.0	1.10	1.07	1.05	1.08	1.05	1.03	1.03	1.01	.00	.00	.98	.97	.96	.95	.94	.92
2.0	1.01	.97	.93	.00	.96	.92	.96	.93	.90	.93	.91	.88	.91	.88	.86	.85
3.0	.94	.89	.85	.93	.88	.84	.90	.86	.82	.88	.84	.81	.85	.82	.80	.78
4.0	.88	.82	.78	.87	.81	.77	.84	.80	.76	.82	.78	.75	.81	.77	.74	.73
5.0	.82	.76	.72	.81	.76	.71	.80	.75	.71	.78	.74	.70	.76	.73	.70	.68
6.0	.77	.71	.67	.77	.71	.67	.75	.70	.66	.74	.69	.66	.72	.68	.65	.64
7.0	.73	.67	.63	.73	.67	.63	.71	.66	.62	.70	.65	.62	.69	.65	.62	.60
8.0	.69	.63	.59	.69	.63	.59	.68	.63	.59	.67	.62	.59	.66	.61	.58	.57
9.0	.66	.60	.56	.65	.60	.56	.64	.59	.56	.64	.59	.56	.63	.58	.55	.54
10.0	.63	.57	.53	.62	.57	.53	.62	.57	.53	.61	.56	.53	.60	.56	.53	.51



C Range: 0 - 360DEG
 C Interval: 10.0DEG
 Test Speed: HIGH
 Temperature:25.3DEG
 Operators:LQL
 Test Date:10 July 2023

Range: 0 - 90DEG
 Interval: 2.0DEG
 Test System:EVERFINE GO-2000B_V1 SYSTEM V2.0.403
 Humidity:65.0%
 Test Distance:10.365m [K=1.0000]
 Remarks: 2ES103WW32000001 LSC4W350LRP UNI

WEC AND CCEC

Test:U:230.74V I:0.0170A P:1.6763W PF:0.4268 Freq:49.99Hz Lamp Flux:112.264x1 lm		
NAME: IVED reading light with R2 base	TYPE:	WEIGHT:
SPEC.:	DIM.:	SERIAL No.:
MFR.: CG LIGHTING	SUR.:	Shielding Angle:

rcc	80%			70%			50%			30%			10%			0
rw	50%	30%	10%	50%	30%	10%	50%	30%	10%	50%	30%	10%	50%	30%	10%	0
rfc	20%			20%			20%			20%			20%			0
RCR	RCR:Room Cavity Ratio						Wall Exitance Coefficients(WEC)									
0.0																
1.0	.197	.112	.036	.191	.109	.035	.178	.102	.033	.166	.096	.031	.156	.090	.029	
2.0	.187	.102	.031	.181	.100	.031	.170	.095	.029	.160	.090	.028	.151	.086	.027	
3.0	.175	.093	.028	.171	.091	.027	.161	.087	.027	.153	.084	.026	.145	.080	.025	
4.0	.165	.086	.025	.160	.084	.025	.152	.081	.024	.145	.078	.023	.138	.075	.023	
5.0	.155	.079	.023	.151	.078	.023	.144	.075	.022	.138	.073	.022	.132	.070	.021	
6.0	.146	.073	.021	.143	.072	.021	.137	.070	.020	.131	.068	.020	.126	.066	.020	
7.0	.138	.068	.019	.135	.067	.019	.130	.066	.019	.125	.064	.019	.120	.062	.018	
8.0	.131	.064	.018	.128	.063	.018	.124	.062	.018	.119	.060	.017	.115	.059	.017	
9.0	.124	.060	.017	.122	.059	.017	.118	.058	.017	.114	.057	.016	.110	.056	.016	
10.0	.118	.057	.016	.116	.056	.016	.113	.055	.016	.109	.054	.015	.105	.053	.015	

rcc	80%			70%			50%			30%			10%			0
rw	50%	30%	10%	50%	30%	10%	50%	30%	10%	50%	30%	10%	50%	30%	10%	0
rfc	20%			20%			20%			20%			20%			0
RCR	RCR:Room Cavity Ratio						Ceiling Cavity Exitance Coefficients(CCEC)									
0.0	.190	.190	.190	.163	.163	.163	.111	.111	.111	.064	.064	.064	.020	.020	.020	
1.0	.173	.157	.143	.148	.135	.123	.101	.093	.085	.058	.054	.050	.019	.017	.016	
2.0	.158	.132	.111	.136	.114	.096	.093	.079	.067	.054	.046	.039	.017	.015	.013	
3.0	.146	.114	.088	.125	.098	.076	.086	.068	.053	.050	.040	.031	.016	.013	.010	
4.0	.136	.099	.071	.117	.086	.062	.080	.060	.043	.046	.035	.026	.015	.011	.008	
5.0	.127	.088	.058	.109	.076	.051	.075	.053	.036	.044	.031	.021	.014	.010	.007	
6.0	.119	.078	.049	.103	.068	.043	.071	.047	.030	.041	.028	.018	.013	.009	.006	
7.0	.112	.071	.042	.097	.061	.036	.067	.043	.026	.039	.025	.015	.013	.008	.005	
8.0	.106	.064	.036	.092	.056	.031	.063	.039	.022	.037	.023	.013	.012	.008	.004	
9.0	.101	.059	.031	.087	.051	.027	.060	.036	.019	.035	.021	.011	.011	.007	.004	
10.0	.096	.055	.027	.083	.048	.024	.057	.033	.017	.033	.020	.010	.011	.006	.003	

C Range: 0 - 360DEG
 C Interval: 10.0DEG
 Test Speed: HIGH
 Temperature:25.3DEG
 Operators:LQL
 Test Date:10 July 2023

g Range: 0 - 90DEG
 g Interval: 2.0DEG
 Test System:EVERFINE GO-2000B_V1 SYSTEM V2.0.403
 Humidity:65.0%
 Test Distance:10.365m [K=1.0000]
 Remarks: 2ES103WW32000001 LSC4W350LRP UNI

UGR(Unified Glare Rating) Table

Test:U:230.74V I:0.0170A P:1.6763W PF:0.4268 Freq:49.99Hz Lamp Flux:112.264x1 lm										
NAME: IVED reading light with R2 base					TYPE:			WEIGHT:		
SPEC.:					DIM.:			SERIAL No.:		
MFR.: CG LIGHTING					SUR.:			Shielding Angle:		
ceiling/cavity	0.7	0.7	0.5	0.5	0.3	0.7	0.7	0.5	0.5	0.3
walls	0.5	0.3	0.5	0.3	0.3	0.5	0.3	0.5	0.3	0.3
working plane	0.2	0.2	0.2	0.2	0.2	0.2	0.2	0.2	0.2	0.2
Room dimensions	Viewed crosswise					Viewed endwise				
x = 2H y = 2H	25.4	26.4	25.6	26.6	26.7	24.8	25.8	25.0	26.0	26.1
3H	26.2	27.1	26.4	27.3	27.5	25.5	26.5	25.8	26.7	26.9
4H	26.6	27.5	26.9	27.7	27.9	26.0	26.9	26.3	27.1	27.4
6H	27.1	27.9	27.4	28.2	28.4	26.4	27.2	26.7	27.5	27.7
8H	27.3	28.0	27.6	28.3	28.6	26.4	27.2	26.8	27.5	27.8
12H	27.3	28.1	27.6	28.3	28.6	26.4	27.2	26.7	27.5	27.7
4H 2H	25.6	26.5	25.9	26.7	26.9	25.1	26.0	25.4	26.2	26.4
3H	26.6	27.4	26.9	27.6	27.9	26.1	26.9	26.4	27.1	27.4
4H	27.3	28.0	27.6	28.3	28.6	26.7	27.4	27.1	27.7	28.1
6H	27.9	28.5	28.3	28.9	29.2	27.2	27.9	27.6	28.2	28.5
8H	28.1	28.7	28.5	29.0	29.4	27.3	27.9	27.7	28.2	28.6
12H	28.2	28.7	28.6	29.1	29.5	27.3	27.8	27.7	28.2	28.6
8H 4H	27.5	28.0	27.9	28.4	28.8	27.0	27.6	27.4	27.9	28.3
6H	28.3	28.7	28.7	29.1	29.6	27.6	28.1	28.1	28.5	28.9
8H	28.5	29.0	29.0	29.4	29.8	27.8	28.2	28.2	28.6	29.1
12H	28.7	29.0	29.2	29.5	30.0	27.8	28.2	28.3	28.6	29.1
12H 4H	27.5	28.0	27.9	28.4	28.8	27.0	27.6	27.5	27.9	28.3
6H	28.3	28.7	28.8	29.1	29.6	27.7	28.1	28.1	28.5	29.0
8H	28.6	29.0	29.1	29.4	29.9	27.9	28.2	28.3	28.7	29.1
Variations with the observer position at spacings:										
S = 1.0H	+ 0.4 / - 0.6					+ 0.5 / - 0.6				
1.5H	+ 0.7 / - 0.4					+ 0.6 / - 0.4				
2.0H	+ 0.9 / - 0.5					+ 0.9 / - 0.7				

CIE Pub.117, 112.3 lm Total Lamp Luminous Flux Correct (8log(F/F0) = -7.6)

C Range: 0 - 360DEG
 C Interval: 10.0DEG
 Test Speed: HIGH
 Temperature:25.3DEG
 Operators:LQL
 Test Date:10 July 2023

g Range: 0 - 90DEG
 g Interval: 2.0DEG
 Test System:EVERFINE GO-2000B_V1 SYSTEM V2.0.403
 Humidity:65.0%
 Test Distance:10.365m [K=1.0000]
 Remarks: 2ES103WW32000001 LSC4W350LRP UNI

UTILIZATION FACTORS TABLE

Test:U:230.74V I:0.0170A P:1.6763W PF:0.4268 Freq:49.99Hz Lamp Flux:112.264x1 lm		
NAME: IVED reading light with R2 base	TYPE:	WEIGHT:
SPEC.:	DIM.:	SERIAL No.:
MFR.: CG LIGHTING	SUR.:	Shielding Angle:

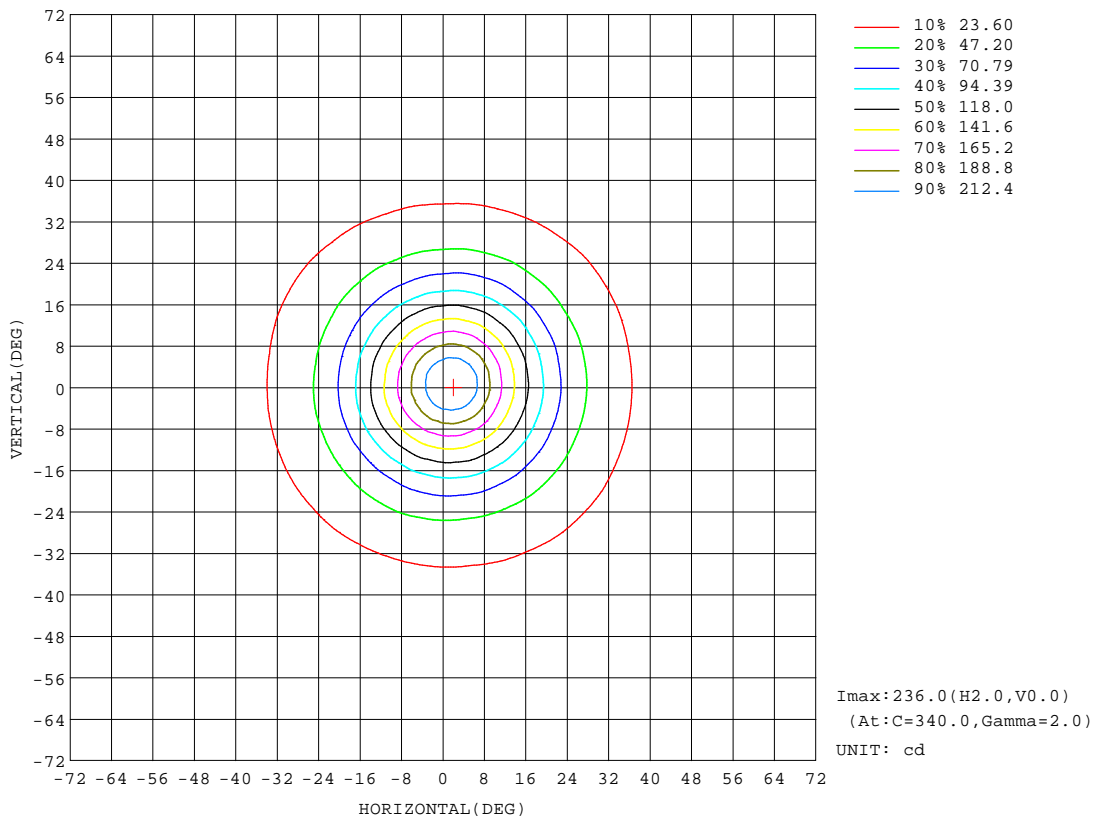
REFLECTANCE										
Ceiling	0.8	0.8	0.8	0.7	0.7	0.7	0.5	0.5	0.5	0
Walls	0.7	0.5	0.3	0.7	0.5	0.3	0.7	0.5	0.3	0
Working plane	0.2	0.2	0.2	0.2	0.2	0.2	0.2	0.2	0.2	0
ROOM INDEX	UTILIZATION FACTORS(PERCENT) k(RI) x RCR = 5									
k = 0.60	80	72	68	79	72	68	79	72	68	63
0.80	88	81	76	87	81	76	86	80	76	71
1.00	94	87	82	93	86	82	91	87	81	77
1.25	98	92	88	97	91	87	95	90	86	82
1.50	102	96	92	100	95	91	98	93	90	85
2.00	105	100	96	104	99	95	101	97	94	88
2.50	108	103	99	106	102	98	103	99	96	90
3.00	110	105	102	108	104	101	104	101	99	92
4.00	112	109	106	110	107	104	106	104	102	94
5.00	114	111	108	111	109	107	107	105	104	96
ROOM INDEX	UF(total)									Direct
According to DIN EN 13032-2 2004			Suspended				SHRNOM = 1.25			

C Range: 0 - 360DEG
 C Interval: 10.0DEG
 Test Speed: HIGH
 Temperature:25.3DEG
 Operators:LQL
 Test Date:10 July 2023

g Range: 0 - 90DEG
 Interval: 2.0DEG
 Test System:EVERFINE GO-2000B_V1 SYSTEM V2.0.403
 Humidity:65.0%
 Test Distance:10.365m [K=1.0000]
 Remarks: 2ES103WW32000001 LSC4W350LRP UNI

ISOCANDELA DIAGRAM

Test:U:230.74V I:0.0170A P:1.6763W PF:0.4268 Freq:49.99Hz Lamp Flux:112.264x1 lm		
NAME: IVED reading light with R2 base	TYPE:	WEIGHT:
SPEC.:	DIM.:	SERIAL No.:
MFR.: CG LIGHTING	SUR.:	Shielding Angle:

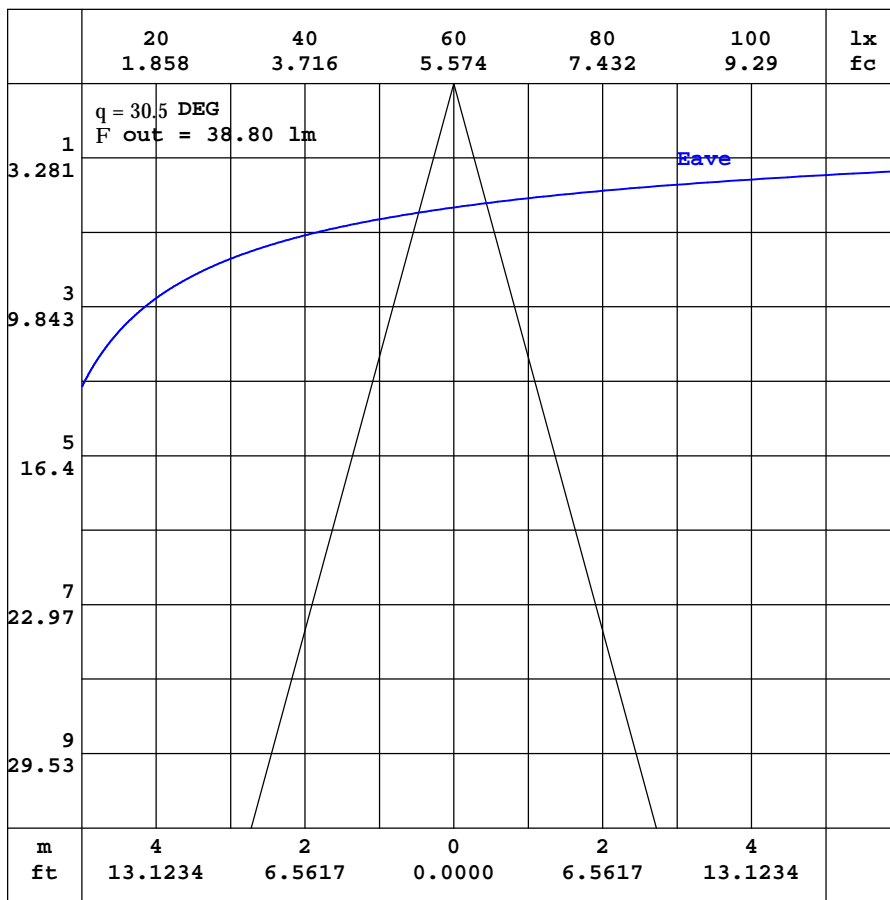


C Range: 0 - 360DEG
 C Interval: 10.0DEG
 Test Speed: HIGH
 Temperature: 25.3DEG
 Operators: LQL
 Test Date: 10 July 2023

Range: 0 - 90DEG
 Interval: 2.0DEG
 Test System: EVERFINE GO-2000B_V1 SYSTEM V2.0.403
 Humidity: 65.0%
 Test Distance: 10.365m [K=1.0000]
 Remarks: 2ES103WW32000001 LSC4W350LRP UNI

AAI CURVES

Test:U:230.74V I:0.0170A P:1.6763W PF:0.4268 Freq:49.99Hz Lamp Flux:112.264x1 lm		
NAME: IVED reading light with R2 base	TYPE:	WEIGHT:
SPEC.:	DIM.:	SERIAL No.:
MFR.: CG LIGHTING	SUR.:	Shielding Angle:



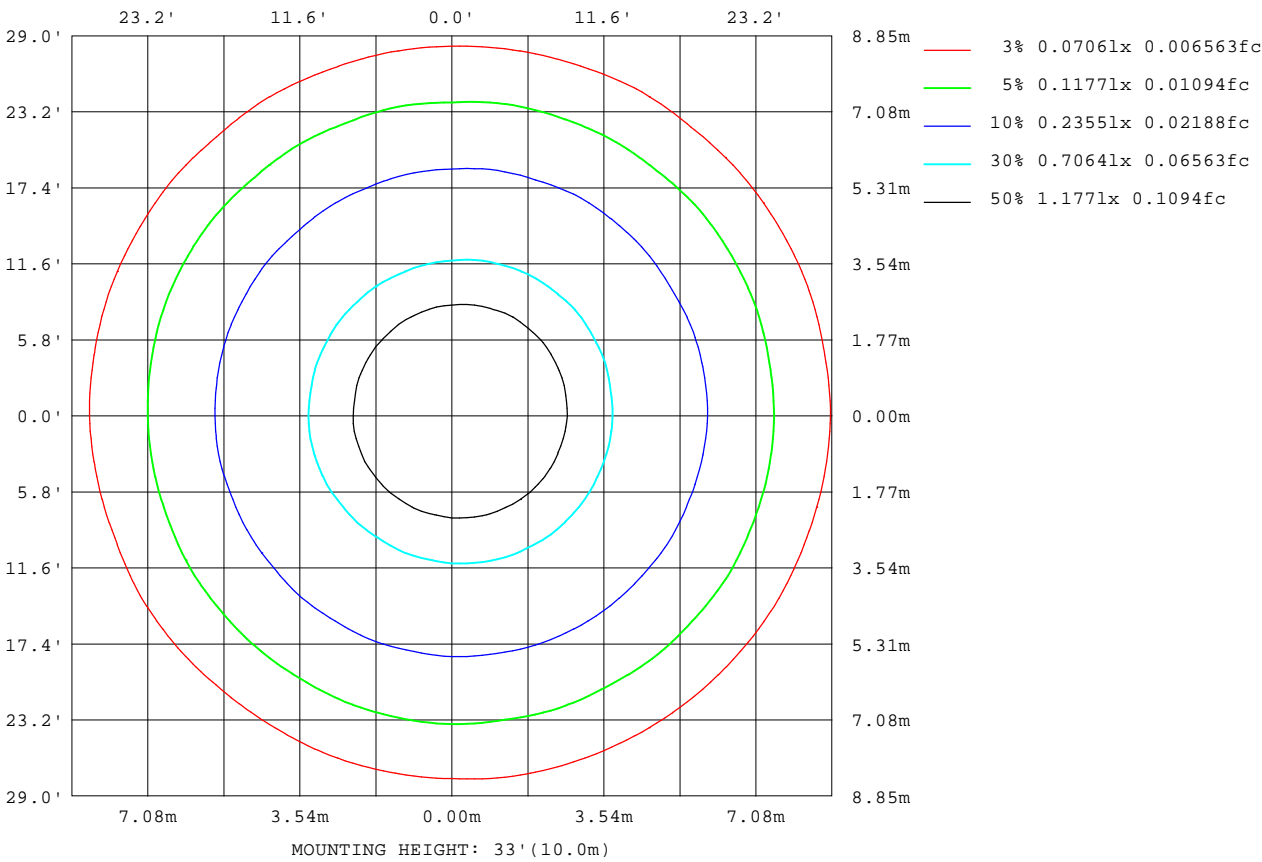
Note:The Curves indicate the illuminated area and the average illumination when the luminaire is at different distance.

C Range: 0 - 360DEG
 C Interval: 10.0DEG
 Test Speed: HIGH
 Temperature:25.3DEG
 Operators:LQL
 Test Date:10 July 2023

Range: 0 - 90DEG
 Interval: 2.0DEG
 Test System:EVERFINE GO-2000B_V1 SYSTEM V2.0.403
 Humidity:65.0%
 Test Distance:10.365m [K=1.0000]
 Remarks: 2ES103WW3200001 LSC4W350LRP UNI

ISOLUX DIAGRAM

Test:U:230.74V I:0.0170A P:1.6763W PF:0.4268 Freq:49.99Hz Lamp Flux:112.264x1 lm		
NAME: IVED reading light with R2 base	TYPE:	WEIGHT:
SPEC.:	DIM.:	SERIAL No.:
MFR.: CG LIGHTING	SUR.:	Shielding Angle:



C Range: 0 - 360DEG
 C Interval: 10.0DEG
 Test Speed: HIGH
 Temperature:25.3DEG
 Operators:LQL
 Test Date:10 July 2023

Range: 0 - 90DEG
 Interval: 2.0DEG
 Test System:EVERFINE GO-2000B_V1 SYSTEM V2.0.403
 Humidity:65.0%
 Test Distance:10.365m [K=1.0000]
 Remarks: 2ES103WW32000001 LSC4W350LRP UNI

LED Avg.L Report

Test:U:230.74V I:0.0170A P:1.6763W PF:0.4268 Freq:49.99Hz Lamp Flux:112.264x1 lm		
NAME: IVED reading light with R2 base	TYPE:	WEIGHT:
SPEC.:	DIM.:	SERIAL No.:
MFR.: CG LIGHTING	SUR.:	Shielding Angle:

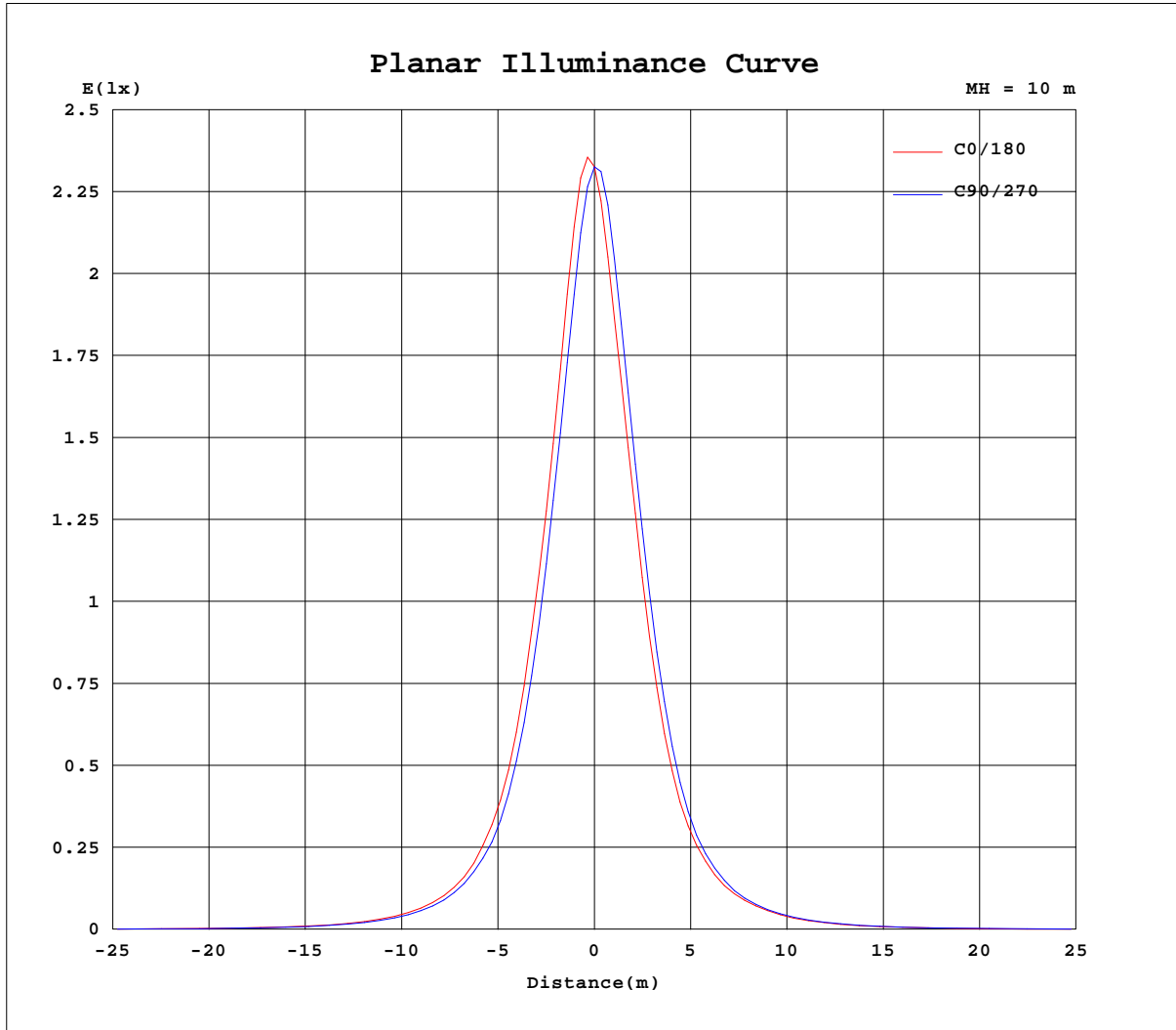
AvgL	cd/m2
L_0~180(65)av	6267
L_0~180(75)av	6599
L_0~180(85)av	2622
L_90~270(65)av	6142
L_90~270(75)av	6713
L_90~270(85)av	2579
L_45(65)av	6163
L_45(75)av	6648
L_45(85)av	2882

Standard: GB/T 29293-2012

C Range: 0 - 360DEG
 C Interval: 10.0DEG
 Test Speed: HIGH
 Temperature:25.3DEG
 Operators:LQL
 Test Date:10 July 2023

g Range: 0 - 90DEG
 g Interval: 2.0DEG
 Test System:EVERFINE GO-2000B_V1 SYSTEM V2.0.403
 Humidity:65.0%
 Test Distance:10.365m [K=1.0000]
 Remarks: 2ES103WW32000001 LSC4W350LRP UNI

Planar Illuminance Curve



C Range: 0 - 360DEG
 C Interval: 10.0DEG
 Test Speed: HIGH
 Temperature: 25.3DEG
 Operators: LQL
 Test Date: 10 July 2023

Page Range: 0 - 90DEG
 Interval: 2.0DEG
 Test System: EVERFINE GO-2000B_V1 SYSTEM V2.0.403
 Humidity: 65.0%
 Test Distance: 10.365m [K=1.0000]
 Remarks: 2ES103WW32000001 LSC4W350LRP UNI

LUMINOUS DISTRIBUTION INTENSITY DATA

Test:U:230.74V I:0.0170A P:1.6763W PF:0.4268 Freq:49.99Hz Lamp Flux:112.264x1 lm		
NAME: IVED reading light with R2 base	TYPE:	WEIGHT:
SPEC.:	DIM.:	SERIAL No.:
MFR.: CG LIGHTING	SUR.:	Shielding Angle:

Table--1

UNIT: cd

C(DEG) g (DEG)	0	10	20	30	40	50	60	70	80	90	100	110	120	130	140	150	160	170	180
0	233	232	233	232	232	232	233	232	232	233	233	233	232	233	233	233	233	233	233
5	231	229	227	226	224	222	219	218	215	214	212	211	209	209	207	208	207	208	207
10	179	178	174	174	171	168	165	163	160	159	156	156	154	154	153	153	153	154	154
15	140	138	136	134	132	130	127	126	123	122	119	120	117	118	117	117	117	118	118
20	89.7	88.6	86.8	85.9	84.3	83.1	80.9	79.8	77.6	76.1	74.5	73.6	71.8	71.5	70.8	71.4	71.2	72.1	72.0
25	63.9	62.4	61.5	61.2	59.5	58.6	56.8	55.7	54.4	54.3	53.4	53.1	51.8	51.2	50.3	50.3	50.1	50.9	50.9
30	39.5	38.5	37.6	37.3	36.4	35.9	35.2	34.6	33.7	33.5	32.6	32.3	31.3	31.4	31.0	31.5	31.4	31.9	32.1
35	28.2	28.1	27.7	27.6	27.0	26.7	25.8	25.7	24.9	24.7	24.2	23.8	23.5	23.5	23.1	23.2	23.2	23.4	23.5
40	18.4	18.1	17.9	17.7	17.3	17.1	16.8	16.6	16.4	16.0	15.9	15.7	15.4	15.3	15.5	15.6	15.4	15.6	15.9
45	14.0	13.7	13.5	13.6	13.2	13.1	12.7	12.5	12.3	12.3	11.9	12.0	11.7	11.7	11.7	11.9	11.8	12.0	12.1
50	9.22	9.27	9.05	9.10	8.87	8.80	8.45	8.29	8.07	8.12	8.05	8.04	7.81	7.73	7.65	7.95	7.97	8.14	7.98
55	7.02	6.98	6.91	6.97	6.86	6.78	6.47	6.29	6.19	6.16	6.18	6.15	5.98	5.92	5.88	5.96	6.11	6.16	6.06
60	4.90	4.81	4.80	4.81	4.75	4.64	4.51	4.36	4.32	4.38	4.24	4.16	4.10	4.03	4.03	4.04	4.13	4.14	4.08
65	3.88	3.86	3.84	3.79	3.75	3.65	3.58	3.45	3.43	3.37	3.33	3.23	3.22	3.15	3.17	3.15	3.23	3.17	3.16
70	2.85	2.80	2.83	2.79	2.77	2.68	2.66	2.58	2.62	2.57	2.65	2.61	2.63	2.58	2.67	2.64	2.66	2.57	2.49
75	2.44	2.35	2.42	2.34	2.36	2.28	2.30	2.21	2.24	2.20	2.29	2.21	2.29	2.15	2.21	2.14	2.26	2.17	2.10
80	1.62	1.55	1.54	1.45	1.48	1.39	1.34	1.24	1.19	1.10	1.05	0.94	0.94	0.89	0.89	0.85	0.87	0.83	0.81
85	0.67	0.72	0.75	0.66	0.66	0.60	0.56	0.46	0.45	0.35	0.36	0.26	0.29	0.22	0.25	0.17	0.22	0.16	0.15
90	0.04	0.04	0.04	0.03	0.04	0.04	0.04	0.04	0.04	0.04	0.04	0.03	0.04	0.04	0.04	0.04	0.04	0.04	0.04

C Range: 0 - 360DEG
 C Interval: 10.0DEG
 Test Speed: HIGH
 Temperature:25.3DEG
 Operators:LQL
 Test Date:10 July 2023

g Range: 0 - 90DEG
 Interval: 2.0DEG
 Test System:EVERFINE GO-2000B_V1 SYSTEM V2.0.403
 Humidity:65.0%
 Test Distance:10.365m [K=1.0000]
 Remarks: 2ES103WW3200001 LSC4W350LRP UNI

LUMINOUS DISTRIBUTION INTENSITY DATA

Test:U:230.74V I:0.0170A P:1.6763W PF:0.4268 Freq:49.99Hz Lamp Flux:112.264x1 lm		
NAME: IVED reading light with R2 base	TYPE:	WEIGHT:
SPEC.:	DIM.:	SERIAL No.:
MFR.: CG LIGHTING	SUR.:	Shielding Angle:

Table--2

UNIT: cd

C(DEG) g (DEG)	190	200	210	220	230	240	250	260	270	280	290	300	310	320	330	340	350		
0	232	233	232	232	232	233	232	232	233	233	233	232	233	233	233	233	233		
5	207	209	210	213	214	217	218	221	223	225	226	228	229	230	231	232	231		
10	154	156	156	159	161	164	166	169	171	175	177	180	181	182	181	182	179		
15	118	120	120	123	124	127	129	132	134	137	138	141	141	142	142	142	140		
20	72.4	73.3	74.1	75.7	76.6	78.6	79.6	82.1	83.8	86.7	88.1	89.9	90.2	92.0	90.9	91.2	89.7		
25	50.8	51.8	52.1	53.7	54.5	56.1	56.5	58.0	58.9	61.1	62.1	63.7	63.5	64.5	64.0	64.8	63.8		
30	32.4	32.9	33.0	33.3	33.0	33.9	34.3	35.3	35.6	36.8	37.1	38.3	38.3	38.6	38.4	39.3	39.5		
35	23.6	24.4	24.5	24.9	24.8	25.2	25.3	26.0	26.3	27.0	27.4	27.9	28.2	28.6	28.4	28.4	28.1		
40	16.0	16.2	16.2	16.4	16.3	16.7	16.7	16.9	17.0	17.2	17.4	18.0	17.8	18.2	18.3	18.5	18.2		
45	12.3	12.5	12.2	12.4	12.2	12.5	12.4	12.7	12.8	13.1	13.2	13.5	13.5	13.7	13.8	14.0	13.8		
50	7.93	8.16	8.13	8.27	8.20	8.20	8.20	8.39	8.44	8.72	8.76	8.87	8.87	9.05	9.05	9.26	9.25		
55	6.06	6.22	6.21	6.27	6.26	6.32	6.29	6.39	6.54	6.75	6.75	6.77	6.78	6.84	6.88	7.08	7.10		
60	4.17	4.17	4.22	4.21	4.30	4.28	4.38	4.42	4.50	4.57	4.63	4.67	4.66	4.67	4.80	4.88	4.89		
65	3.24	3.23	3.26	3.27	3.33	3.32	3.42	3.44	3.53	3.58	3.65	3.63	3.70	3.69	3.80	3.83	3.85		
70	2.45	2.44	2.59	2.57	2.65	2.63	2.70	2.60	2.73	2.66	2.70	2.64	2.71	2.68	2.79	2.79	2.84		
75	2.15	2.12	2.30	2.27	2.40	2.34	2.40	2.34	2.42	2.35	2.39	2.31	2.35	2.33	2.46	2.35	2.43		
80	0.89	0.91	0.98	0.99	1.14	1.11	1.24	1.28	1.37	1.36	1.48	1.44	1.54	1.50	1.59	1.52	1.59		
85	0.22	0.20	0.27	0.23	0.34	0.32	0.41	0.40	0.52	0.51	0.61	0.59	0.70	0.68	0.75	0.71	0.51		
90	0.04	0.03	0.04	0.04	0.04	0.04	0.04	0.04	0.04	0.04	0.04	0.04	0.04	0.04	0.05	0.04	0.04		

C Range: 0 - 360DEG
 C Interval: 10.0DEG
 Test Speed: HIGH
 Temperature:25.3DEG
 Operators:LQL
 Test Date:10 July 2023

g Range: 0 - 90DEG
 Interval: 2.0DEG
 Test System:EVERFINE GO-2000B_V1 SYSTEM V2.0.403
 Humidity:65.0%
 Test Distance:10.365m [K=1.0000]
 Remarks: 2ES103WW3200001 LSC4W350LRP UNI