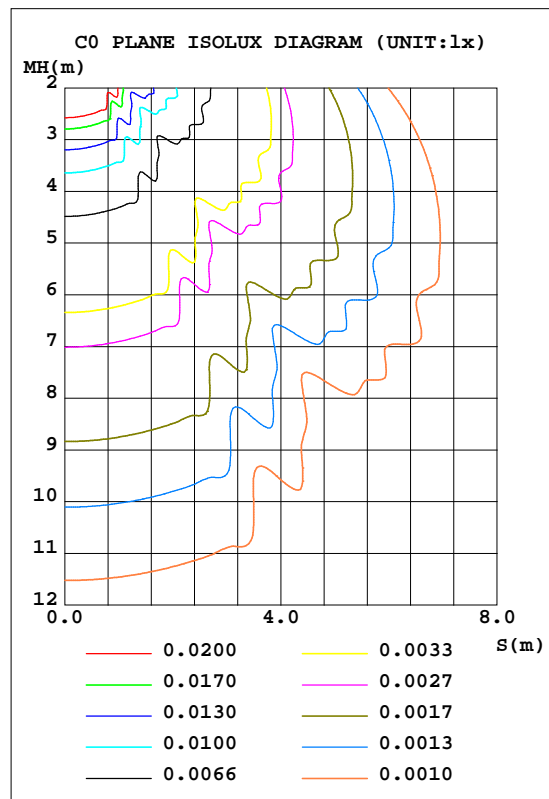
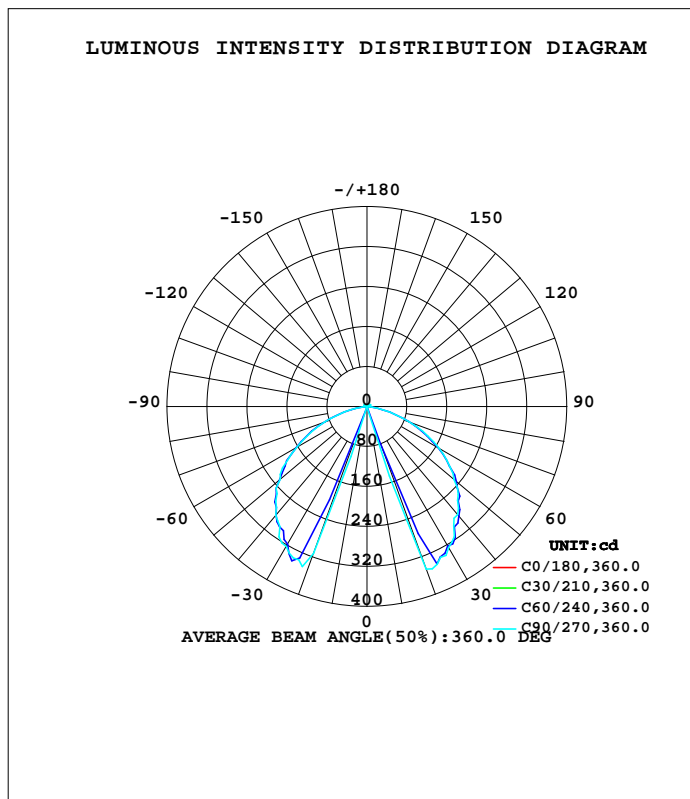


LUMINAIRE PHOTOMETRIC TEST REPORT

Test:U:230.71V I:0.0503A P:10.586W PF:0.9112 Freq:49.99Hz Lamp Flux:564.264x1 lm		
NAME: Montana 9W LED outdoor wall light	TYPE:	WEIGHT:
SPEC.:	DIM.:	SERIAL No.:
MFR.: CG LIGHTING	SUR.:	Shielding Angle:

DATA OF LAMP		PHOTOMETRIC DATA			
MODEL	1437B3-0001	Imax(cd)	353.9	S/MH(C0/180)	1.97
NOMINAL POWER(W)		LOR(%)	100.0	S/MH(C90/270)	0.05
RATED VOLTAGE(V)	230	TOTAL FLUX(lm)	564.26	h UP, DN(C0-180)	1.7,48.4
NOMINAL FLUX(lm)	564.264	CIE CLASS	DIRECT	h UP, DN(C180-360)	1.7,48.2
LAMPS INSIDE	1	h up(%)	3.4	CIBSE SHR NOM	0.00
TEST VOLTAGE(V)	230	h down(%)	96.6	CIBSE SHR MAX	1.00



C Range: 0 - 360DEG
 C Interval: 10.0DEG
 Test Speed: HIGH
 Temperature:25.3DEG
 Operators:LQL
 Test Date:12 July 2023

Range: 0 - 180DEG
 Interval: 2.0DEG
 Test System:EVERFINE GO-2000B_V1 SYSTEM V2.0.403
 Humidity:65.0%
 Test Distance:10.365m [K=1.0000]
 Remarks: ZG1BGX40KHO G5S10W500LR

ZONAL FLUX DIAGRAM

ZONAL FLUX DIAGRAM:

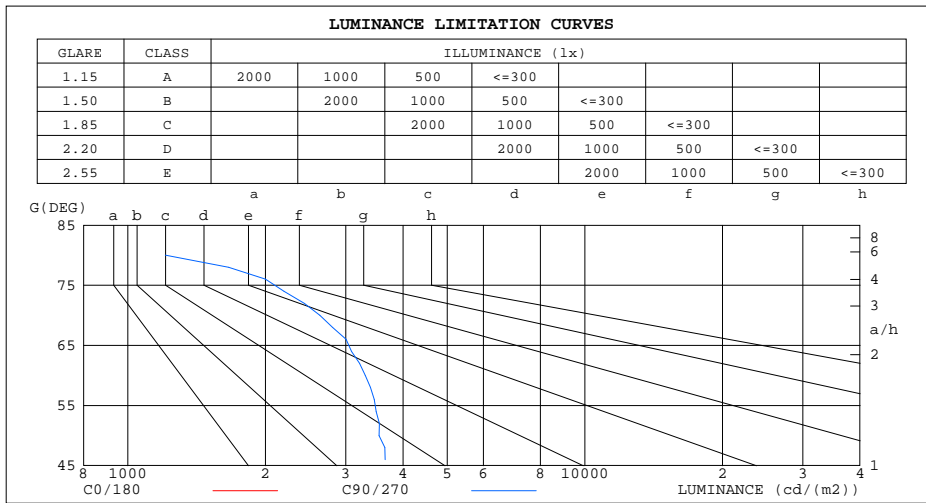
g	C0	C45	C90	C135	C180	C225	C270	C315	g	F zone	F total	%lum,lamp
10	0.1328	0.3613	0.3033	0.3283	0.1328	0.3209	0.3166	0.3357	0- 10	0.0172	0.0172	0.00,0.00
20	0.1108	1.497	346.2	2.270	0.1328	1.456	312.8	1.978	10- 20	4.691	4.708	0.83,0.83
30	0.0886	317.9	326.5	317.1	0.1622	285.1	323.6	320.8	20- 30	74.83	79.54	14.1,14.1
40	0.1107	284.5	282.5	281.6	0.1771	279.2	284.4	283.0	30- 40	117.2	196.7	34.9,34.9
50	0.1254	227.3	227.8	225.0	0.1918	227.3	226.7	229.0	40- 50	122.5	319.2	56.6,56.6
60	0.1254	163.8	165.6	162.5	0.2066	160.6	161.3	165.0	50- 60	109.1	428.3	75.9,75.9
70	0.1254	88.29	90.05	87.35	0.2065	84.68	89.95	89.63	60- 70	77.44	505.8	89.6,89.6
80	0.1254	15.31	20.98	15.13	0.1992	12.17	21.25	16.44	70- 80	34.57	540.3	95.8,95.8
90	0.1254	2.737	4.301	3.142	0.2066	3.069	4.257	3.072	80- 90	4.855	545.2	96.6,96.6
100	0.1254	3.205	4.795	3.448	0.2657	3.294	4.823	3.541	90-100	3.169	548.3	97.2,97.2
110	0.2433	3.563	5.592	3.847	0.4355	3.644	5.672	3.895	100-110	3.438	551.8	97.8,97.8
120	0.5307	3.353	6.544	3.821	0.7749	3.519	6.608	3.809	110-120	3.577	555.4	98.4,98.4
130	0.9142	2.449	6.703	2.924	1.144	2.748	6.625	2.719	120-130	3.265	558.6	99,99
140	1.328	2.043	3.782	2.519	1.513	2.515	3.720	2.213	130-140	2.231	560.9	99.4,99.4
150	1.784	1.881	2.795	2.449	1.874	2.471	2.715	2.010	140-150	1.464	562.3	99.7,99.7
160	1.999	1.958	2.353	2.560	2.147	2.560	2.331	2.047	150-160	1.030	563.4	99.8,99.8
170	2.338	2.276	2.744	2.652	2.464	2.652	2.707	2.364	160-170	0.6675	564.0	100,100
180	2.596	2.574	2.714	2.633	2.611	2.582	2.744	2.615	170-180	0.2457	564.3	100,100
DEG	LUMINOUS INTENSITY:cd									UNIT:lm		

C Range: 0 - 360DEG
 C Interval: 10.0DEG
 Test Speed: HIGH
 Temperature:25.3DEG
 Operators:LQL
 Test Date:12 July 2023

g Range: 0 - 180DEG
 Interval: 2.0DEG
 Test System:EVERFINE GO-2000B_V1 SYSTEM V2.0.403
 Humidity:65.0%
 Test Distance:10.365m [K=1.0000]
 Remarks: ZG1BGX40KHO G5S10W500LR

LUMINANCE LIMITATION CURVES

Test:U:230.71V I:0.0503A P:10.586W PF:0.9112 Freq:49.99Hz Lamp Flux:564.264x1 lm		
NAME: Montana 9W LED outdoor wall light	TYPE:	WEIGHT:
SPEC.:	DIM.:	SERIAL No.:
MFR.: CG LIGHTING	SUR.:	Shielding Angle:



LUMINANCE cd/(m2)		
G(DEG)	C0/180	C90/270
85	14	612
80	7	1208
75	5	2340
70	4	2633
65	3	3202
60	3	3312
55	2	3584
50	2	3544
45	2	3689

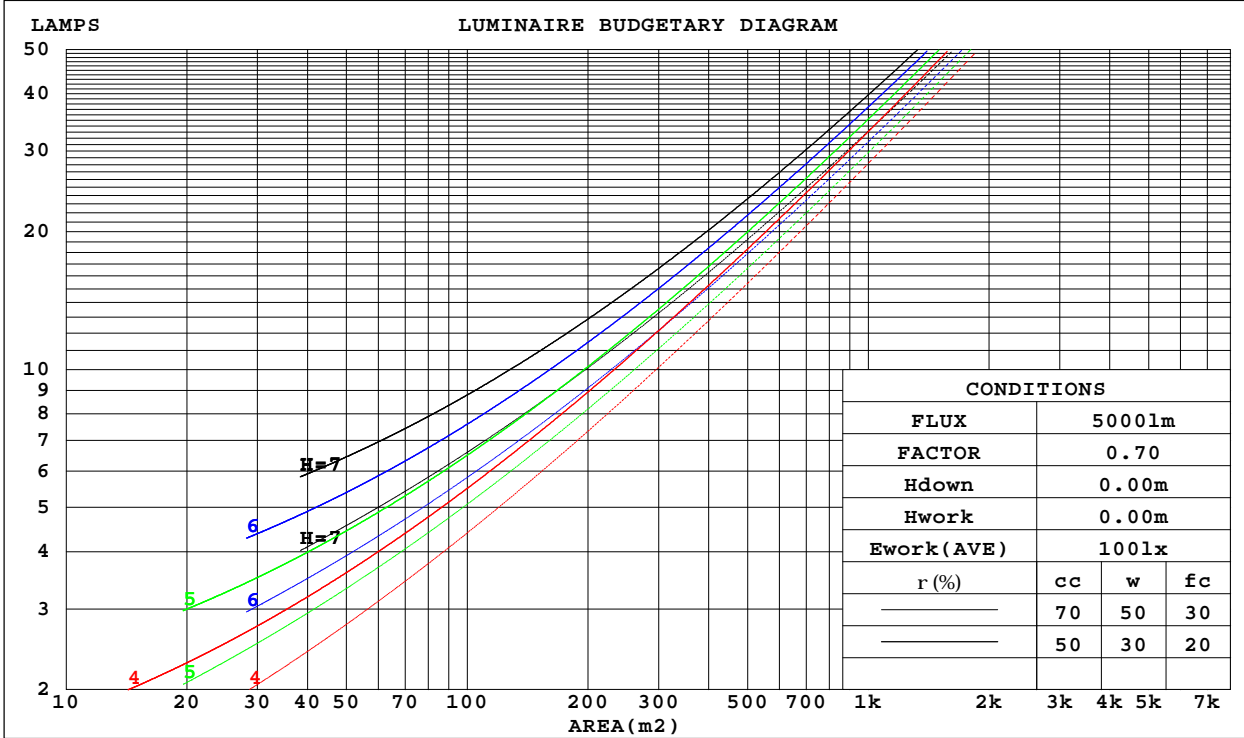
C Range: 0 - 360DEG
 C Interval: 10.0DEG
 Test Speed: HIGH
 Temperature:25.3DEG
 Operators:LQL
 Test Date:12 July 2023

G Range: 0 - 180DEG
 Interval: 2.0DEG
 Test System:EVERFINE GO-2000B_V1 SYSTEM V2.0.403
 Humidity:65.0%
 Test Distance:10.365m [K=1.0000]
 Remarks: ZG1BGX40KHO G5S10W500LR

CU AND LUMINAIRE BUDGETARY ESTIMATE DIAGRAM

Test:U:230.71V I:0.0503A P:10.586W PF:0.9112 Freq:49.99Hz Lamp Flux:564.264x1 lm		
NAME: Montana 9W LED outdoor wall light	TYPE:	WEIGHT:
SPEC.:	DIM.:	SERIAL No.:
MFR.: CG LIGHTING	SUR.:	Shielding Angle:

r _{cc}	80%			70%			50%			30%			10%			0
r _w	50%	30%	10%	50%	30%	10%	50%	30%	10%	50%	30%	10%	50%	30%	10%	0
r _{fc}	20%			20%			20%			20%			20%			0
RCR	RCR:Room Cavity Ratio						Coefficients of Utilization(CU)									
0.0	1.18	1.18	1.18	1.15	1.15	1.15	1.09	1.09	1.09	1.04	1.04	1.04	.99	.99	.99	.97
1.0	1.03	.98	.94	1.00	.96	.93	.95	.92	.89	.91	.88	.86	.87	.85	.83	.80
2.0	.88	.81	.75	.86	.80	.74	.82	.77	.72	.78	.74	.70	.75	.71	.68	.65
3.0	.76	.68	.61	.74	.66	.60	.71	.64	.58	.68	.62	.57	.65	.60	.55	.53
4.0	.66	.57	.50	.65	.56	.49	.62	.54	.48	.59	.52	.47	.56	.51	.46	.44
5.0	.58	.48	.41	.57	.48	.41	.54	.46	.40	.52	.45	.39	.49	.43	.38	.36
6.0	.51	.41	.35	.50	.41	.34	.48	.40	.34	.46	.39	.33	.44	.37	.32	.30
7.0	.45	.36	.29	.44	.35	.29	.42	.34	.29	.41	.33	.28	.39	.33	.28	.25
8.0	.41	.31	.25	.40	.31	.25	.38	.30	.24	.36	.29	.24	.35	.29	.24	.22
9.0	.36	.28	.22	.36	.27	.21	.34	.27	.21	.33	.26	.21	.32	.25	.20	.19
10.0	.33	.24	.19	.32	.24	.19	.31	.23	.18	.30	.23	.18	.29	.22	.18	.16



C Range: 0 - 360DEG
 C Interval: 10.0DEG
 Test Speed: HIGH
 Temperature:25.3DEG
 Operators:LQL
 Test Date:12 July 2023

Range: 0 - 180DEG
 Interval: 2.0DEG
 Test System:EVERFINE GO-2000B_V1 SYSTEM V2.0.403
 Humidity:65.0%
 Test Distance:10.365m [K=1.0000]
 Remarks: ZG1BGX40KHO G5S10W500LR

WEC AND CCEC

Test:U:230.71V I:0.0503A P:10.586W PF:0.9112 Freq:49.99Hz Lamp Flux:564.264x1 lm		
NAME: Montana 9W LED outdoor wall light	TYPE:	WEIGHT:
SPEC.:	DIM.:	SERIAL No.:
MFR.: CG LIGHTING	SUR.:	Shielding Angle:

rcc	80%			70%			50%			30%			10%			0
rw	50%	30%	10%	50%	30%	10%	50%	30%	10%	50%	30%	10%	50%	30%	10%	0
rfc	20%			20%			20%			20%			20%			0
RCR	RCR:Room Cavity Ratio						Wall Exitance Coefficients(WEC)									
0.0																
1.0	.315	.179	.057	.307	.175	.056	.292	.167	.053	.278	.160	.051	.265	.154	.050	
2.0	.304	.167	.051	.297	.163	.050	.283	.157	.049	.271	.152	.048	.259	.147	.046	
3.0	.285	.152	.045	.278	.149	.045	.266	.144	.044	.255	.140	.043	.244	.135	.042	
4.0	.265	.137	.040	.259	.135	.040	.248	.131	.039	.238	.128	.039	.228	.124	.038	
5.0	.246	.125	.036	.240	.123	.036	.231	.120	.035	.221	.117	.035	.213	.114	.034	
6.0	.228	.114	.033	.224	.113	.033	.215	.110	.032	.206	.107	.032	.199	.105	.031	
7.0	.213	.105	.030	.208	.104	.030	.200	.101	.029	.193	.099	.029	.186	.097	.028	
8.0	.199	.097	.027	.195	.096	.027	.188	.094	.027	.181	.092	.026	.174	.090	.026	
9.0	.186	.090	.025	.183	.089	.025	.176	.087	.025	.170	.085	.024	.164	.083	.024	
10.0	.175	.084	.023	.172	.083	.023	.166	.081	.023	.160	.080	.023	.155	.078	.022	

rcc	80%			70%			50%			30%			10%			0
rw	50%	30%	10%	50%	30%	10%	50%	30%	10%	50%	30%	10%	50%	30%	10%	0
rfc	20%			20%			20%			20%			20%			0
RCR	RCR:Room Cavity Ratio						Ceiling Cavity Exitance Coefficients(CCEC)									
0.0	.216	.216	.216	.185	.185	.185	.126	.126	.126	.072	.072	.072	.023	.023	.023	
1.0	.207	.182	.160	.177	.156	.138	.121	.108	.095	.070	.062	.055	.022	.020	.018	
2.0	.200	.158	.123	.171	.136	.106	.117	.094	.074	.068	.055	.043	.022	.018	.014	
3.0	.194	.141	.099	.166	.121	.085	.114	.084	.060	.066	.049	.035	.021	.016	.012	
4.0	.187	.128	.082	.161	.110	.072	.110	.077	.050	.064	.045	.030	.021	.015	.010	
5.0	.180	.118	.071	.155	.102	.062	.107	.071	.044	.062	.042	.026	.020	.014	.009	
6.0	.174	.110	.064	.149	.095	.055	.103	.066	.039	.060	.039	.023	.019	.013	.008	
7.0	.167	.103	.058	.144	.089	.051	.099	.063	.036	.058	.037	.021	.019	.012	.007	
8.0	.161	.097	.054	.139	.085	.047	.096	.059	.033	.056	.035	.020	.018	.011	.007	
9.0	.155	.093	.051	.134	.080	.044	.093	.057	.031	.054	.033	.019	.017	.011	.006	
10.0	.149	.088	.048	.129	.077	.042	.089	.054	.030	.052	.032	.018	.017	.010	.006	

C Range: 0 - 360DEG
 C Interval: 10.0DEG
 Test Speed: HIGH
 Temperature:25.3DEG
 Operators:LQL
 Test Date:12 July 2023

g Range: 0 - 180DEG
 g Interval: 2.0DEG
 Test System:EVERFINE GO-2000B_V1 SYSTEM V2.0.403
 Humidity:65.0%
 Test Distance:10.365m [K=1.0000]
 Remarks: ZG1BGX40KHO G5S10W500LR

UGR(Unified Glare Rating) Table

Test:U:230.71V I:0.0503A P:10.586W PF:0.9112 Freq:49.99Hz Lamp Flux:564.264x1 lm										
NAME: Montana 9W LED outdoor wall light					TYPE:			WEIGHT:		
SPEC.:					DIM.:			SERIAL No.:		
MFR.: CG LIGHTING					SUR.:			Shielding Angle:		
ceiling/cavity	0.7	0.7	0.5	0.5	0.3	0.7	0.7	0.5	0.5	0.3
walls	0.5	0.3	0.5	0.3	0.3	0.5	0.3	0.5	0.3	0.3
working plane	0.2	0.2	0.2	0.2	0.2	0.2	0.2	0.2	0.2	0.2
Room dimensions	Viewed crosswise					Viewed endwise				
x = 2H y = 2H	12.5	14.1	12.8	14.3	14.6	21.3	22.9	21.6	23.2	23.5
3H	12.2	13.7	12.6	14.0	14.3	22.5	24.0	22.9	24.3	24.6
4H	12.1	13.5	12.5	13.8	14.2	22.9	24.3	23.3	24.6	24.9
6H	12.0	13.3	12.4	13.6	14.0	23.0	24.3	23.4	24.6	25.0
8H	11.9	13.2	12.3	13.5	13.9	23.0	24.2	23.4	24.6	24.9
12H	11.9	13.1	12.3	13.4	13.8	22.9	24.1	23.3	24.5	24.9
4H 2H	16.7	18.1	17.1	18.5	18.8	21.7	23.0	22.0	23.4	23.7
3H	16.8	18.0	17.2	18.4	18.8	23.1	24.3	23.5	24.7	25.0
4H	16.7	17.8	17.1	18.2	18.6	23.6	24.6	24.0	25.0	25.4
6H	16.6	17.6	17.1	18.0	18.4	23.7	24.7	24.2	25.1	25.5
8H	16.6	17.5	17.0	17.9	18.4	23.7	24.6	24.2	25.0	25.5
12H	16.5	17.3	17.0	17.8	18.3	23.7	24.5	24.2	24.9	25.4
8H 4H	17.8	18.7	18.3	19.1	19.6	23.6	24.5	24.1	24.9	25.4
6H	17.7	18.4	18.2	18.9	19.4	23.8	24.6	24.3	25.0	25.5
8H	17.7	18.3	18.2	18.8	19.3	23.8	24.5	24.3	25.0	25.5
12H	17.6	18.2	18.2	18.7	19.2	23.8	24.4	24.3	24.9	25.4
12H 4H	17.8	18.6	18.3	19.1	19.6	23.5	24.4	24.0	24.8	25.3
6H	17.8	18.4	18.3	18.9	19.4	23.8	24.4	24.3	24.9	25.4
8H	17.7	18.3	18.3	18.8	19.3	23.8	24.3	24.3	24.8	25.4
Variations with the observer position at spacings:										
S = 1.0H	+ 0.7 / - 1.1					+ 0.2 / - 0.3				
1.5H	+ 1.8 / - 2.4					+ 0.3 / - 0.6				
2.0H	+ 3.4 / - 5.5					+ 0.4 / - 0.4				

CIE Pub.117, 564.3 lm Total Lamp Luminous Flux Correct (8log(F/F0) = -2.0)

C Range: 0 - 360DEG
 C Interval: 10.0DEG
 Test Speed: HIGH
 Temperature:25.3DEG
 Operators:LQL
 Test Date:12 July 2023

g Range: 0 - 180DEG
 g Interval: 2.0DEG
 Test System:EVERFINE GO-2000B_V1 SYSTEM V2.0.403
 Humidity:65.0%
 Test Distance:10.365m [K=1.0000]
 Remarks: ZG1BGX40KHO G5S10W500LR

UTILIZATION FACTORS TABLE

Test:U:230.71V I:0.0503A P:10.586W PF:0.9112 Freq:49.99Hz Lamp Flux:564.264x1 lm		
NAME: Montana 9W LED outdoor wall light	TYPE:	WEIGHT:
SPEC.:	DIM.:	SERIAL No.:
MFR.: CG LIGHTING	SUR.:	Shielding Angle:

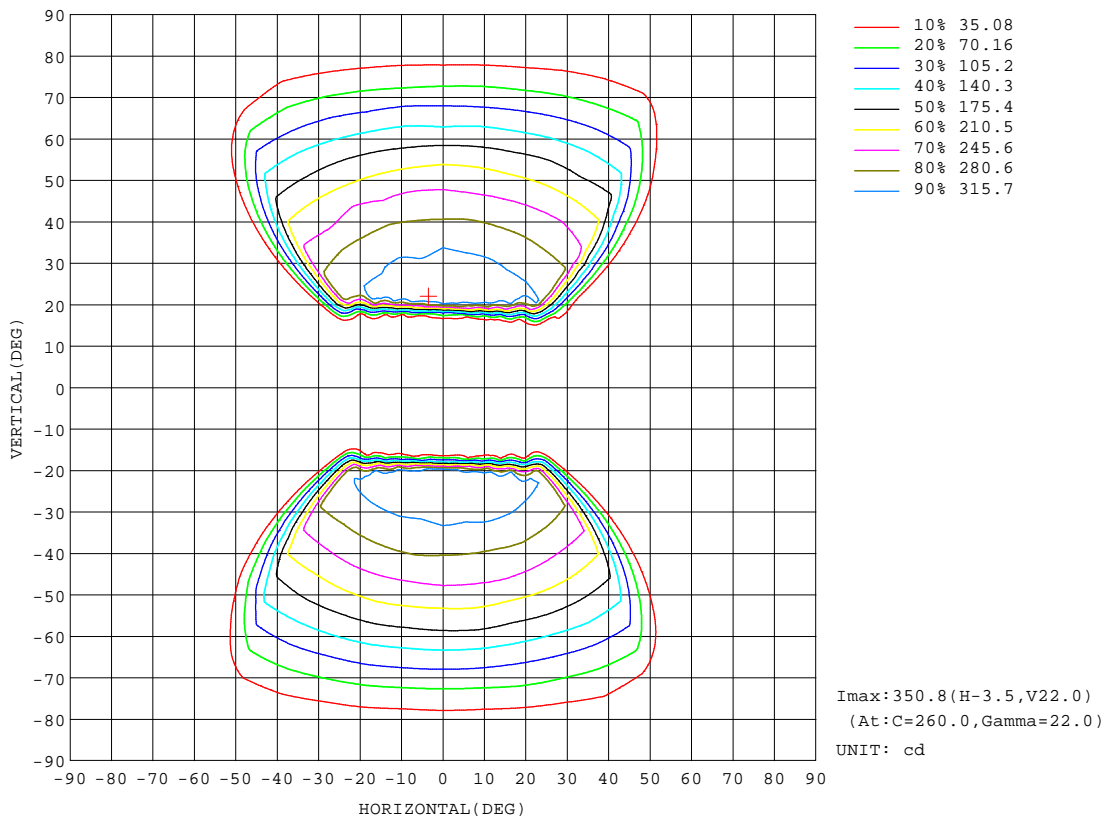
REFLECTANCE										
Ceiling	0.8	0.8	0.8	0.7	0.7	0.7	0.5	0.5	0.5	0
Walls	0.7	0.5	0.3	0.7	0.5	0.3	0.7	0.5	0.3	0
Working plane	0.2	0.2	0.2	0.2	0.2	0.2	0.2	0.2	0.2	0
ROOM INDEX	UTILIZATION FACTORS(PERCENT) k(RI) x RCR = 5									
k = 0.60	51	39	31	50	38	31	49	38	31	24
0.80	62	49	41	61	49	41	59	48	41	33
1.00	71	59	52	70	59	51	67	60	51	43
1.25	79	68	60	78	67	60	75	65	59	51
1.50	85	74	67	83	73	66	79	71	65	56
2.00	93	83	77	90	82	76	86	79	74	65
2.50	97	89	82	94	87	81	90	84	79	70
3.00	100	93	87	98	91	86	93	88	84	74
4.00	105	99	94	102	97	92	97	93	89	79
5.00	107	102	98	105	100	96	99	96	93	82
ROOM INDEX	UF(total)									Direct
According to DIN EN 13032-2 2004			Suspended				SHRNOM = 1.25			

C Range: 0 - 360DEG
 C Interval: 10.0DEG
 Test Speed: HIGH
 Temperature:25.3DEG
 Operators:LQL
 Test Date:12 July 2023

g Range: 0 - 180DEG
 Interval: 2.0DEG
 Test System:EVERFINE GO-2000B_V1 SYSTEM V2.0.403
 Humidity:65.0%
 Test Distance:10.365m [K=1.0000]
 Remarks: ZG1BGX40KHO G5S10W500LR

ISOCANDELA DIAGRAM

Test:U:230.71V I:0.0503A P:10.586W PF:0.9112 Freq:49.99Hz Lamp Flux:564.264x1 lm		
NAME: Montana 9W LED outdoor wall light	TYPE:	WEIGHT:
SPEC.:	DIM.:	SERIAL No.:
MFR.: CG LIGHTING	SUR.:	Shielding Angle:

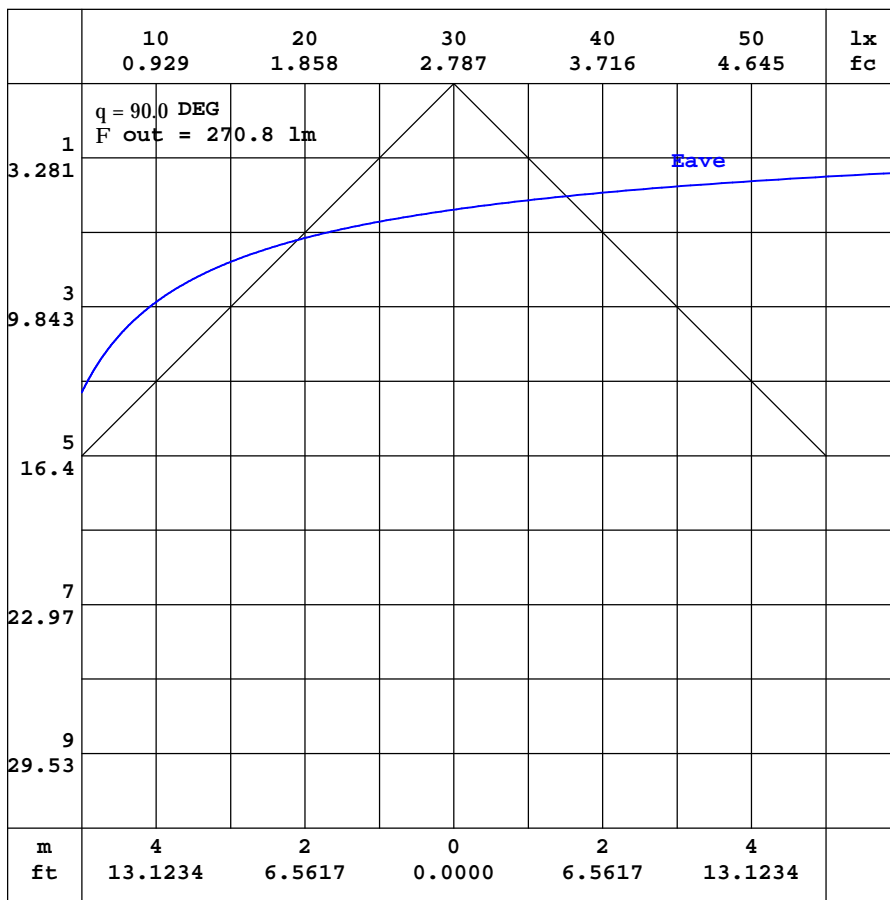


C Range: 0 - 360DEG
 C Interval: 10.0DEG
 Test Speed: HIGH
 Temperature: 25.3DEG
 Operators: LQL
 Test Date: 12 July 2023

Range: 0 - 180DEG
 Interval: 2.0DEG
 Test System: EVERFINE GO-2000B_V1 SYSTEM V2.0.403
 Humidity: 65.0%
 Test Distance: 10.365m [K=1.0000]
 Remarks: ZG1BGX40KHO G5S10W500LR

AAI CURVES

Test:U:230.71V I:0.0503A P:10.586W PF:0.9112 Freq:49.99Hz Lamp Flux:564.264x1 lm		
NAME: Montana 9W LED outdoor wall light	TYPE:	WEIGHT:
SPEC.:	DIM.:	SERIAL No.:
MFR.: CG LIGHTING	SUR.:	Shielding Angle:



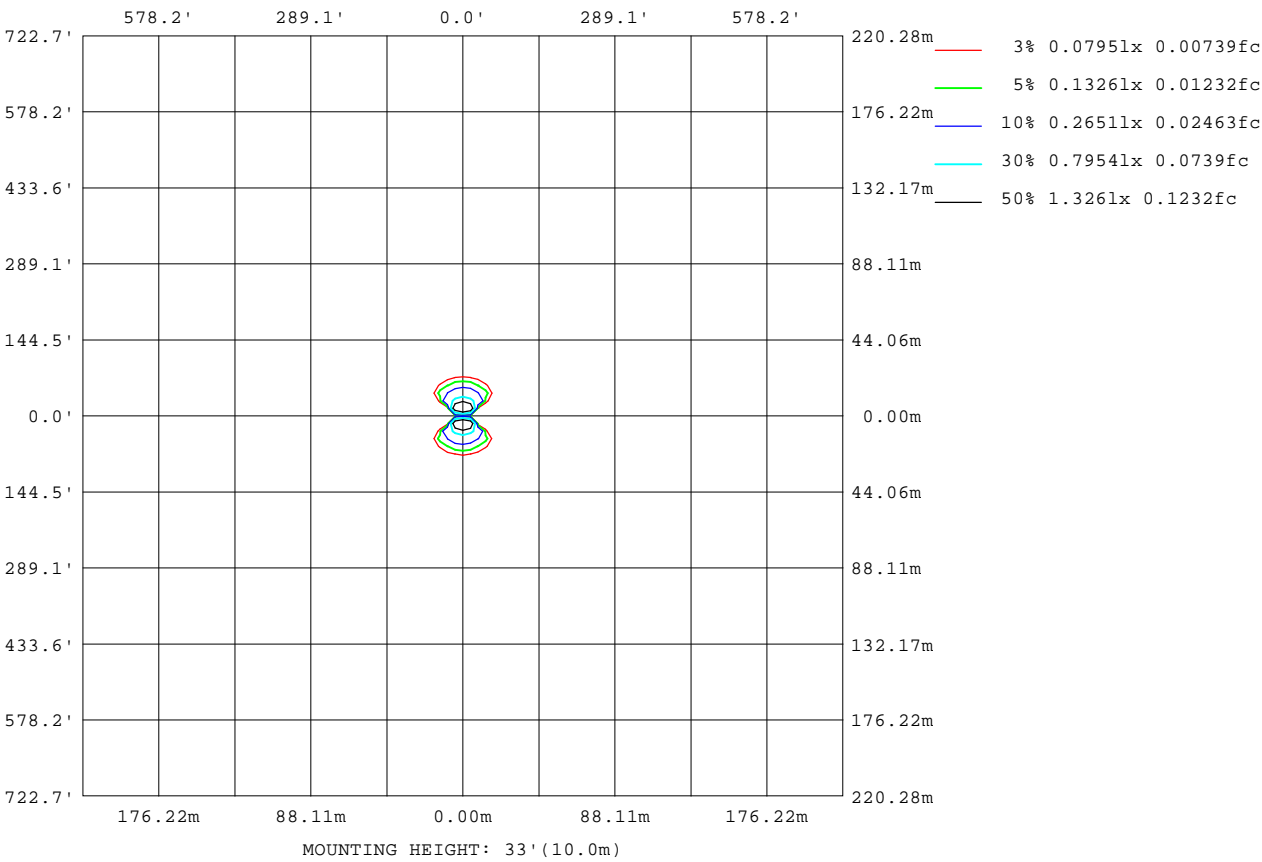
Note:The Curves indicate the illuminated area and the average illumination when the luminaire is at different distance.

C Range: 0 - 360DEG
 C Interval: 10.0DEG
 Test Speed: HIGH
 Temperature:25.3DEG
 Operators:LQL
 Test Date:12 July 2023

Range: 0 - 180DEG
 Interval: 2.0DEG
 Test System:EVERFINE GO-2000B_V1 SYSTEM V2.0.403
 Humidity:65.0%
 Test Distance:10.365m [K=1.0000]
 Remarks: ZG1BGX40KHO G5S10W500LR

ISOLUX DIAGRAM

Test:U:230.71V I:0.0503A P:10.586W PF:0.9112 Freq:49.99Hz Lamp Flux:564.264x1 lm		
NAME: Montana 9W LED outdoor wall light	TYPE:	WEIGHT:
SPEC.:	DIM.:	SERIAL No.:
MFR.: CG LIGHTING	SUR.:	Shielding Angle:



C Range: 0 - 360DEG
 C Interval: 10.0DEG
 Test Speed: HIGH
 Temperature: 25.3DEG
 Operators: LQL
 Test Date: 12 July 2023

g Range: 0 - 180DEG
 Interval: 2.0DEG
 Test System: EVERFINE GO-2000B_V1 SYSTEM V2.0.403
 Humidity: 65.0%
 Test Distance: 10.365m [K=1.0000]
 Remarks: ZG1BGX40KHO G5S10W500LR

LED Avg.L Report

Test:U:230.71V I:0.0503A P:10.586W PF:0.9112 Freq:49.99Hz Lamp Flux:564.264x1 lm		
NAME: Montana 9W LED outdoor wall light	TYPE:	WEIGHT:
SPEC.:	DIM.:	SERIAL No.:
MFR.: CG LIGHTING	SUR.:	Shielding Angle:

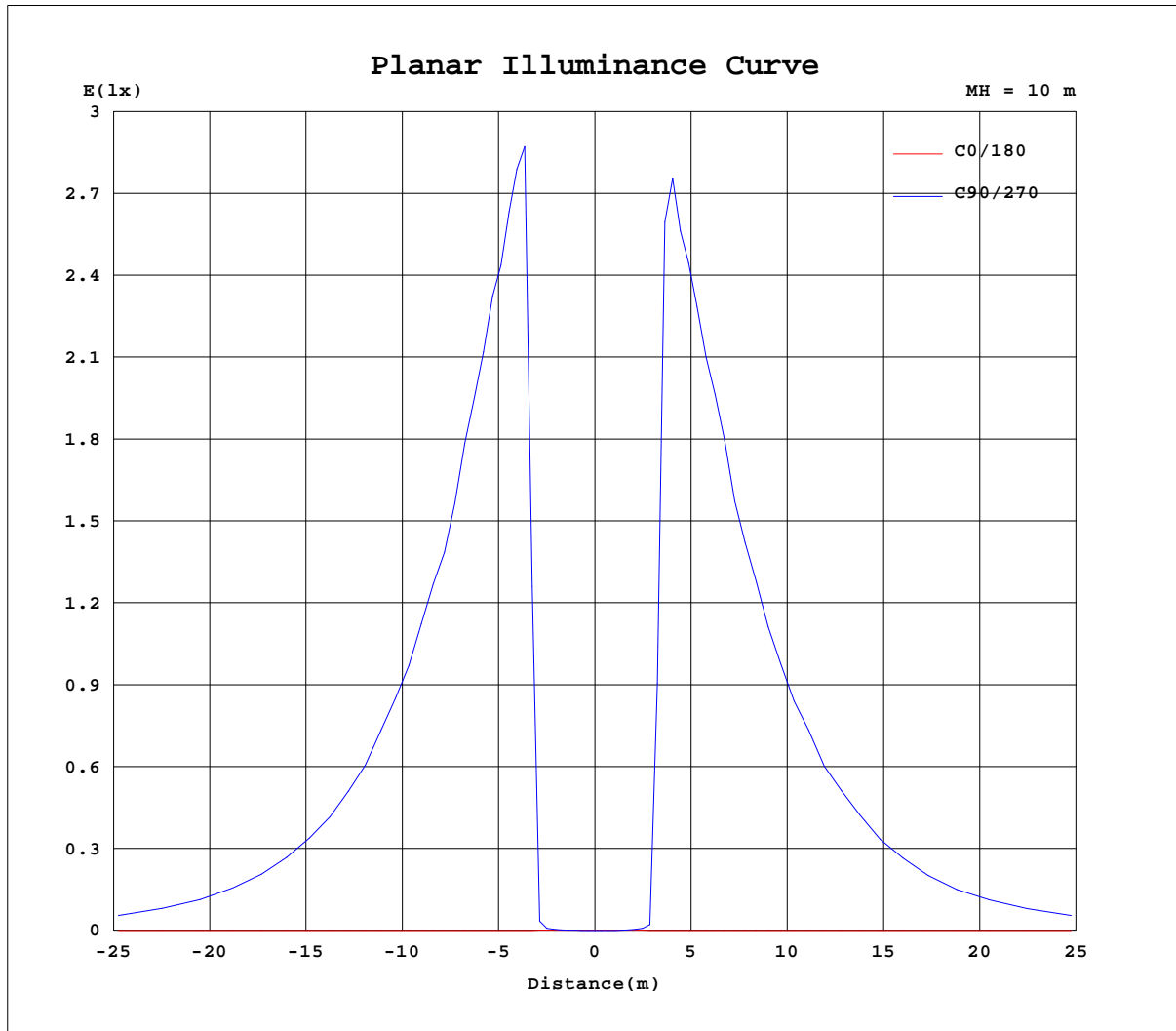
AvgL	cd/m2
L_0~180(65)av	4
L_0~180(75)av	6
L_0~180(85)av	19
L_90~270(65)av	3022
L_90~270(75)av	2087
L_90~270(85)av	530
L_45(65)av	3151
L_45(75)av	2028
L_45(85)av	338

Standard: GB/T 29293-2012

C Range: 0 - 360DEG
 C Interval: 10.0DEG
 Test Speed: HIGH
 Temperature:25.3DEG
 Operators:LQL
 Test Date:12 July 2023

g Range: 0 - 180DEG
 g Interval: 2.0DEG
 Test System:EVERFINE GO-2000B_V1 SYSTEM V2.0.403
 Humidity:65.0%
 Test Distance:10.365m [K=1.0000]
 Remarks: ZG1BGX40KHO G5S10W500LR

Planar Illuminance Curve



C Range: 0 - 360DEG
 C Interval: 10.0DEG
 Test Speed: HIGH
 Temperature: 25.3DEG
 Operators: LQL
 Test Date: 12 July 2023

Page Range: 0 - 180DEG
 Interval: 2.0DEG
 Test System: EVERFINE GO-2000B_V1 SYSTEM V2.0.403
 Humidity: 65.0%
 Test Distance: 10.365m [K=1.0000]
 Remarks: ZG1BGX40KHO G5S10W500LR

LUMINOUS DISTRIBUTION INTENSITY DATA

Test:U:230.71V I:0.0503A P:10.586W PF:0.9112 Freq:49.99Hz Lamp Flux:564.264x1 lm		
NAME: Montana 9W LED outdoor wall light	TYPE:	WEIGHT:
SPEC.:	DIM.:	SERIAL No.:
MFR.: CG LIGHTING	SUR.:	Shielding Angle:

Table--1

UNIT: cd

C(DEG) g (DEG)	0	10	20	30	40	50	60	70	80	90	100	110	120	130	140	150	160	170	180
0	0.13	0.15	0.15	0.16	0.15	0.13	0.06	0.02	0.01	0.01	0.01	0.02	0.07	0.13	0.15	0.15	0.15	0.15	0.13
5	0.13	0.16	0.15	0.18	0.15	0.16	0.08	0.08	0.01	0.08	0.01	0.08	0.13	0.17	0.15	0.18	0.15	0.15	0.13
10	0.13	0.19	0.18	0.30	0.36	0.36	0.25	0.31	0.24	0.30	0.25	0.33	0.28	0.38	0.28	0.29	0.17	0.18	0.13
15	0.13	0.20	0.22	0.41	0.47	0.60	0.65	0.78	0.87	0.98	1.06	1.05	0.91	0.73	0.48	0.41	0.24	0.20	0.13
20	0.11	0.21	0.36	0.63	0.94	2.05	79.1	236	319	346	334	262	112	3.13	1.41	0.79	0.38	0.23	0.13
25	0.13	0.24	0.45	0.89	2.24	201	345	340	348	345	342	345	342	262	5.13	1.40	0.52	0.29	0.13
30	0.09	0.30	0.60	1.57	308	328	323	330	322	327	323	325	325	322	313	3.71	0.79	0.38	0.16
35	0.11	0.35	0.78	2.07	310	312	316	315	312	313	308	312	306	312	307	6.07	0.93	0.44	0.15
40	0.11	0.44	0.94	2.09	281	288	286	283	284	283	285	283	282	280	283	8.34	1.14	0.56	0.18
45	0.13	0.49	1.11	2.01	261	266	263	270	262	261	266	265	261	260	258	9.63	1.32	0.64	0.18
50	0.13	0.58	1.30	1.89	227	228	233	228	229	228	231	232	230	227	223	10.9	1.39	0.77	0.19
55	0.13	0.64	1.30	1.84	202	205	204	203	206	206	205	206	203	201	204	11.6	1.40	0.86	0.20
60	0.13	0.69	1.30	1.78	162	166	164	165	165	166	165	165	163	163	162	11.2	1.38	0.91	0.21
65	0.13	0.69	1.30	1.63	132	136	133	135	136	135	135	135	135	133	131	9.16	1.34	0.86	0.21
70	0.13	0.68	1.24	1.54	88.0	88.6	89.4	88.4	90.3	90.1	89.7	90.7	89.4	89.5	85.2	2.29	1.28	0.83	0.21
75	0.13	0.65	1.21	1.48	53.7	60.6	60.6	61.2	59.9	60.6	60.2	61.7	59.8	59.6	58.3	1.82	1.26	0.84	0.20
80	0.13	0.60	1.17	1.50	8.93	21.7	21.0	21.8	20.6	21.0	19.9	20.4	18.7	18.5	11.8	1.73	1.20	0.83	0.20
85	0.13	0.60	1.16	1.55	2.18	4.20	5.29	5.71	5.45	5.34	5.23	5.30	4.94	4.25	2.75	1.73	1.20	0.80	0.20
90	0.13	0.60	1.15	1.65	2.22	3.25	4.10	4.46	4.50	4.30	4.46	4.54	4.35	3.68	2.60	1.80	1.20	0.77	0.21
95	0.13	0.60	1.14	1.73	2.40	3.46	4.23	4.60	4.57	4.43	4.48	4.58	4.33	3.67	2.62	1.90	1.20	0.76	0.22
100	0.13	0.60	1.14	1.79	2.68	3.73	4.51	4.86	4.87	4.80	4.82	4.91	4.58	3.96	2.94	2.06	1.23	0.77	0.27
105	0.19	0.61	1.14	1.79	2.80	3.91	4.71	5.14	5.13	5.05	5.11	5.19	4.84	4.16	3.08	2.10	1.24	0.78	0.32
110	0.24	0.66	1.14	1.79	2.97	4.16	5.04	5.55	5.63	5.59	5.61	5.64	5.18	4.47	3.22	2.08	1.28	0.83	0.44
115	0.36	0.71	1.17	1.78	2.89	4.25	5.22	5.78	6.00	5.98	5.97	5.93	5.42	4.60	3.28	2.04	1.29	0.88	0.55
120	0.53	0.84	1.20	1.78	2.60	4.10	5.40	6.14	6.45	6.54	6.52	6.36	5.68	4.59	3.05	2.02	1.38	0.98	0.77
125	0.68	0.95	1.30	1.72	2.37	3.63	5.29	6.18	6.70	6.85	6.77	6.47	5.72	4.21	2.79	2.02	1.47	1.08	0.92
130	0.91	1.14	1.31	1.67	2.09	2.81	4.07	5.45	6.34	6.70	6.54	5.88	4.66	3.31	2.54	2.06	1.56	1.25	1.14
135	1.08	1.26	1.39	1.67	1.98	2.45	3.28	4.29	5.20	5.63	5.47	4.79	3.76	2.94	2.43	2.10	1.63	1.38	1.33
140	1.33	1.45	1.53	1.68	1.88	2.21	2.66	3.07	3.56	3.78	3.82	3.44	3.05	2.63	2.40	2.18	1.80	1.57	1.51
145	1.52	1.57	1.54	1.70	1.81	2.11	2.47	2.71	3.07	3.20	3.30	3.06	2.86	2.58	2.40	2.23	1.88	1.70	1.66
150	1.78	1.72	1.67	1.79	1.79	1.98	2.26	2.42	2.71	2.80	2.88	2.75	2.68	2.51	2.39	2.33	2.02	1.90	1.87
155	1.84	1.82	1.78	1.81	1.79	1.95	2.11	2.25	2.54	2.58	2.69	2.57	2.58	2.52	2.42	2.39	2.12	2.03	1.99
160	2.00	1.98	1.90	1.96	1.92	2.00	2.05	2.17	2.30	2.35	2.45	2.51	2.54	2.62	2.50	2.48	2.26	2.18	2.15
165	2.11	2.12	2.04	2.11	2.02	2.07	2.06	2.21	2.28	2.43	2.48	2.63	2.63	2.71	2.57	2.54	2.34	2.29	2.27
170	2.34	2.36	2.27	2.33	2.26	2.29	2.31	2.49	2.59	2.74	2.74	2.77	2.75	2.70	2.60	2.57	2.43	2.45	2.46
175	2.46	2.51	2.42	2.46	2.38	2.45	2.47	2.67	2.70	2.72	2.75	2.75	2.76	2.69	2.60	2.60	2.50	2.55	2.56
180	2.60	2.60	2.57	2.58	2.54	2.60	2.62	2.71	2.71	2.71	2.75	2.75	2.74	2.66	2.60	2.60	2.60	2.60	2.61

C Range: 0 - 360DEG
 C Interval: 10.0DEG
 Test Speed: HIGH
 Temperature:25.3DEG
 Operators:LQL
 Test Date:12 July 2023

g Range: 0 - 180DEG
 Interval: 2.0DEG
 Test System:EVERFINE GO-2000B_V1 SYSTEM V2.0.403
 Humidity:65.0%
 Test Distance:10.365m [K=1.0000]
 Remarks: ZG1BGX40KHO G5S10W500LR

LUMINOUS DISTRIBUTION INTENSITY DATA

Test:U:230.71V I:0.0503A P:10.586W PF:0.9112 Freq:49.99Hz Lamp Flux:564.264x1 lm		
NAME: Montana 9W LED outdoor wall light	TYPE:	WEIGHT:
SPEC.:	DIM.:	SERIAL No.:
MFR.: CG LIGHTING	SUR.:	Shielding Angle:

Table--2

UNIT: cd

C(DEG) g (DEG)	190	200	210	220	230	240	250	260	270	280	290	300	310	320	330	340	350		
0	0.15	0.15	0.16	0.15	0.13	0.06	0.02	0.01	0.01	0.01	0.02	0.07	0.13	0.15	0.15	0.15	0.15		
5	0.15	0.15	0.15	0.18	0.13	0.11	0.01	0.09	0.01	0.08	0.03	0.13	0.13	0.18	0.15	0.17	0.15		
10	0.15	0.20	0.21	0.32	0.32	0.39	0.32	0.40	0.32	0.36	0.32	0.38	0.32	0.35	0.22	0.24	0.15		
15	0.15	0.24	0.35	0.55	0.59	0.75	0.83	0.93	0.90	0.91	0.82	0.78	0.61	0.59	0.38	0.30	0.15		
20	0.15	0.39	0.60	1.10	1.81	20.7	181	279	313	302	236	77.2	2.74	1.22	0.71	0.50	0.23		
25	0.18	0.49	0.93	1.97	135	331	347	334	336	348	345	343	249	4.62	1.11	0.66	0.35		
30	0.24	0.75	1.70	253	317	318	321	325	324	327	326	323	323	319	8.19	0.93	0.37		
35	0.36	0.90	2.25	303	300	300	308	304	315	308	310	309	305	311	41.7	1.10	0.47		
40	0.38	1.14	2.59	276	282	283	285	284	284	286	284	284	282	284	32.7	1.35	0.58		
45	0.45	1.31	2.57	259	271	266	265	266	263	263	264	264	268	269	27.5	1.50	0.71		
50	0.56	1.44	2.46	227	228	229	227	228	227	232	231	231	227	231	22.7	1.54	0.83		
55	0.61	1.42	2.38	201	203	203	203	206	209	207	206	206	204	202	18.7	1.51	0.93		
60	0.69	1.40	2.23	161	160	163	159	166	161	165	163	164	164	166	14.3	1.40	1.05		
65	0.70	1.34	2.13	133	133	133	134	136	133	135	135	136	136	133	12.0	1.37	1.04		
70	0.71	1.31	1.99	81.5	87.9	90.1	90.2	90.8	90.0	90.6	91.0	91.5	88.6	90.7	2.48	1.31	1.00		
75	0.71	1.31	1.90	43.1	58.2	61.0	59.5	60.5	60.5	62.0	61.4	62.8	61.4	62.1	1.80	1.31	0.95		
80	0.69	1.22	1.87	5.21	19.1	21.1	20.2	21.4	21.2	22.7	22.3	23.7	21.2	11.7	1.67	1.31	0.91		
85	0.68	1.21	1.87	2.55	4.01	5.00	5.22	5.38	5.21	5.67	5.69	5.89	3.86	2.38	1.67	1.31	0.88		
90	0.66	1.21	1.82	2.61	3.53	4.31	4.54	4.48	4.26	4.40	4.49	4.28	3.56	2.59	1.82	1.34	0.86		
95	0.66	1.22	1.82	2.60	3.55	4.32	4.61	4.60	4.41	4.55	4.56	4.42	3.75	2.76	1.96	1.35	0.85		
100	0.66	1.24	1.87	2.83	3.76	4.59	4.93	4.95	4.82	4.94	4.92	4.74	4.02	3.06	2.06	1.38	0.85		
105	0.69	1.27	1.97	2.97	3.96	4.80	5.18	5.27	5.15	5.24	5.18	4.95	4.23	3.20	2.12	1.38	0.85		
110	0.80	1.32	2.01	3.06	4.23	5.14	5.63	5.75	5.67	5.77	5.62	5.30	4.48	3.30	2.15	1.41	0.85		
115	0.84	1.36	1.98	2.99	4.33	5.36	5.89	6.14	6.08	6.13	5.89	5.53	4.60	3.30	2.15	1.42	0.90		
120	0.94	1.46	1.97	2.74	4.29	5.50	6.23	6.62	6.61	6.67	6.23	5.64	4.62	3.00	2.03	1.47	1.05		
125	1.06	1.53	2.01	2.57	3.84	5.37	6.33	6.76	6.86	6.73	6.31	5.58	4.17	2.65	1.95	1.48	1.08		
130	1.32	1.66	2.01	2.38	3.11	4.20	5.58	6.38	6.63	6.38	5.74	4.47	3.17	2.26	1.87	1.53	1.29		
135	1.37	1.74	2.09	2.38	2.85	3.43	4.41	5.22	5.51	5.28	4.52	3.50	2.74	2.10	1.83	1.60	1.37		
140	1.56	1.87	2.12	2.38	2.65	2.89	3.32	3.61	3.72	3.52	3.20	2.72	2.41	2.01	1.82	1.70	1.53		
145	1.78	1.98	2.24	2.40	2.57	2.68	2.99	3.10	3.17	2.98	2.81	2.47	2.26	1.93	1.82	1.76	1.65		
150	1.87	2.12	2.28	2.45	2.49	2.49	2.66	2.67	2.71	2.57	2.47	2.22	2.09	1.93	1.84	1.86	1.79		
155	2.01	2.21	2.35	2.49	2.49	2.49	2.51	2.47	2.51	2.35	2.27	2.10	2.06	1.97	1.88	1.94	1.87		
160	2.22	2.35	2.42	2.58	2.54	2.57	2.45	2.40	2.33	2.26	2.17	2.12	2.04	2.05	2.01	2.08	2.01		
165	2.26	2.42	2.47	2.62	2.62	2.67	2.57	2.53	2.35	2.31	2.18	2.16	2.11	2.18	2.12	2.21	2.15		
170	2.43	2.52	2.49	2.62	2.68	2.71	2.73	2.74	2.71	2.69	2.47	2.43	2.34	2.39	2.34	2.41	2.37		
175	2.49	2.57	2.52	2.61	2.68	2.70	2.73	2.72	2.74	2.74	2.68	2.62	2.46	2.51	2.46	2.52	2.48		
180	2.60	2.60	2.57	2.57	2.60	2.62	2.72	2.72	2.74	2.72	2.71	2.71	2.61	2.62	2.58	2.59	2.61		

C Range: 0 - 360DEG
 C Interval: 10.0DEG
 Test Speed: HIGH
 Temperature:25.3DEG
 Operators:LQL
 Test Date:12 July 2023

g Range: 0 - 180DEG
 Interval: 2.0DEG
 Test System:EVERFINE GO-2000B_V1 SYSTEM V2.0.403
 Humidity:65.0%
 Test Distance:10.365m [K=1.0000]
 Remarks: ZG1BGX40KHO G5S10W500LR