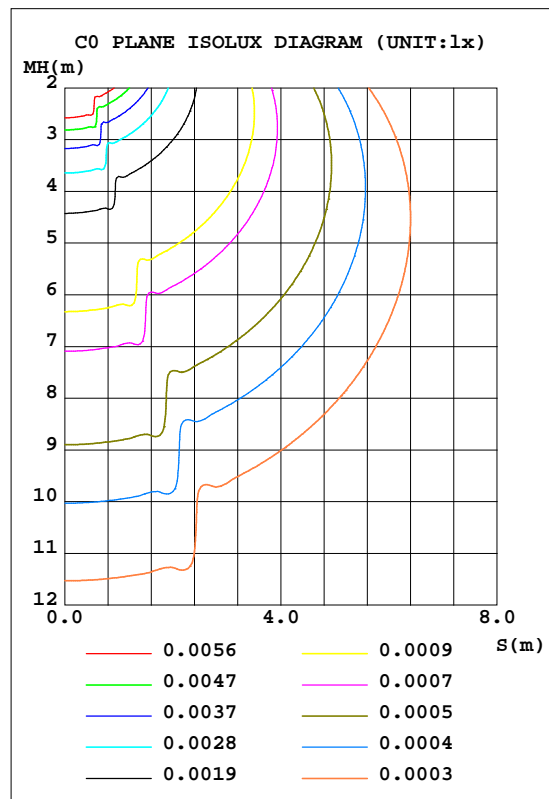
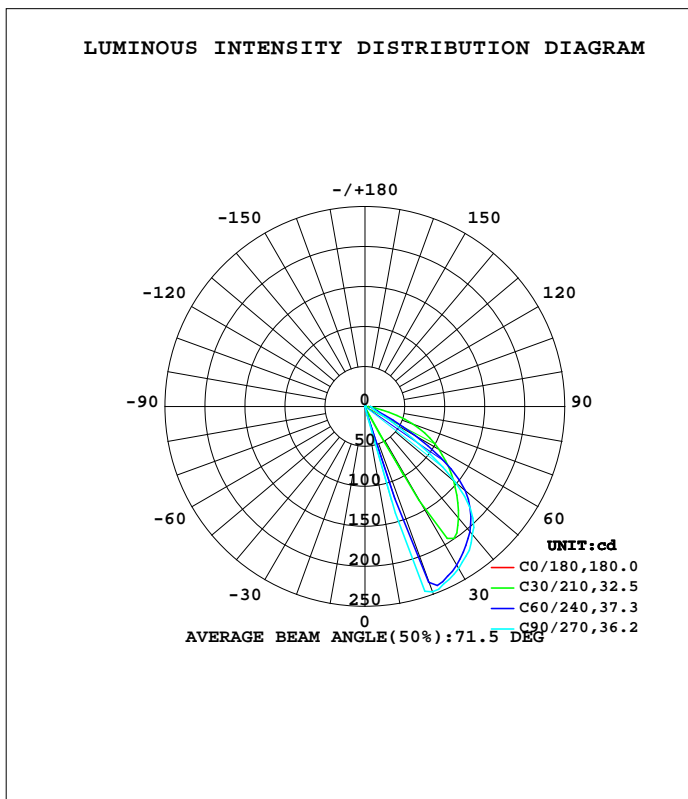


LUMINAIRE PHOTOMETRIC TEST REPORT

Test:U:230.72V I:0.0415A P:8.6253W PF:0.9003 Freq:49.99Hz Lamp Flux:219.409x1 lm		
NAME: Walloo plus 25 6.5W double CCT LED outdoor	WAVE: light	WEIGHT:
SPEC.:	DIM.:	SERIAL No.:
MFR.: CG LIGHTING	SUR.:	Shielding Angle:

DATA OF LAMP		PHOTOMETRIC DATA				Eff: 25.44 lm/W
MODEL	2199ACCT-Q5	I <sub>max</sub> (cd)	246.6	S/MH(C0/180)	1.53	
NOMINAL POWER(W)		LOR(%)	100.0	S/MH(C90/270)	1.04	
RATED VOLTAGE(V)	230.0	TOTAL FLUX(lm)	219.41	h UP, DN(C0-180)	0.0,99.8	
NOMINAL FLUX(lm)	219.409	CIE CLASS	DIRECT	h UP, DN(C180-360)	0.0,0.2	
LAMPS INSIDE	1	h up(%)	0.0	CIBSE SHR NOM	0.00	
TEST VOLTAGE(V)	230.0	h down(%)	100.0	CIBSE SHR MAX	1.00	



C Range: 0 - 360DEG  
 C Interval: 10.0DEG  
 Test Speed: HIGH  
 Temperature:25.3DEG  
 Operators:LQL  
 Test Date:20 July 2023

Range: 0 - 90DEG  
 Interval: 2.0DEG  
 Test System:EVERFINE GO-2000B\_V1 SYSTEM V2.0.403  
 Humidity:65.0%  
 Test Distance:10.365m [K=1.0000]  
 Remarks: SMD G5S10W700LR

ZONAL FLUX DIAGRAM

ZONAL FLUX DIAGRAM:

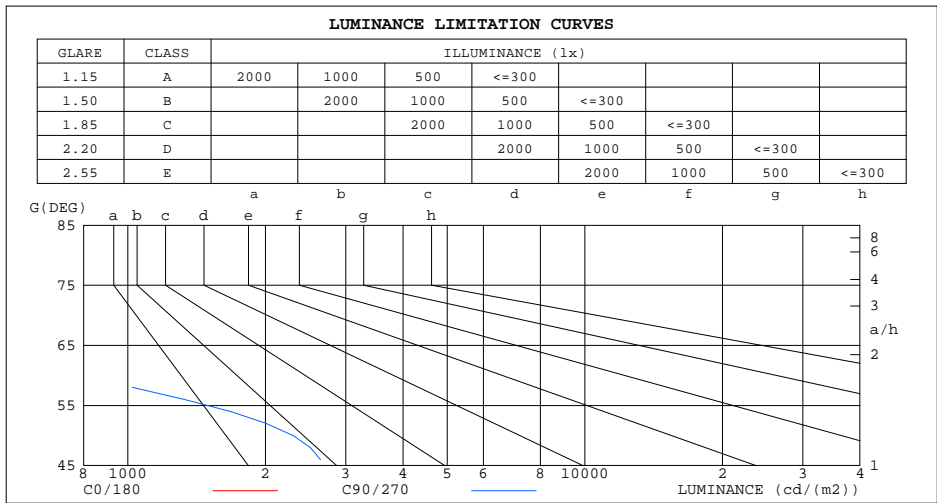
g	C0	C45	C90	C135	C180	C225	C270	C315	g	F zone	F total	%lum,lamp
10	0.0372	0.0601	0.4080	0.1567	0.0372	0.0335	0.0372	0.1154	0- 10	0.0081	0.0081	0.00,0.00
20	0.0298	52.36	246.5	44.68	0.0372	0.0298	0.0372	0.1005	10- 20	5.466	5.474	2.49,2.49
30	0.0298	222.4	234.4	217.0	0.0372	0.0335	0.0372	0.0968	20- 30	31.48	36.96	16.8,16.8
40	0.0298	194.6	208.9	188.2	0.0372	0.0335	0.0372	0.0968	30- 40	48.16	85.11	38.8,38.8
50	0.0298	159.1	148.0	151.3	0.0447	0.0373	0.0372	0.0968	40- 50	55.00	140.1	63.9,63.9
60	0.0298	104.6	38.91	95.49	0.0521	0.0410	0.0372	0.1042	50- 60	42.47	182.6	83.2,83.2
70	0.0298	34.16	12.94	29.09	0.0819	0.0856	0.0372	0.1192	60- 70	23.06	205.6	93.7,93.7
80	0.0298	8.836	9.064	8.068	0.1266	0.2196	0.1191	0.2381	70- 80	9.930	215.6	98.3,98.3
90	0.1265	5.501	7.168	5.277	0.1414	0.4652	0.3498	0.4689	80- 90	3.838	219.4	100,100
100									90-100			
110									100-110			
120									110-120			
130									120-130			
140									130-140			
150									140-150			
160									150-160			
170									160-170			
180									170-180			
DEG	LUMINOUS INTENSITY:cd									UNIT:lm		

C Range: 0 - 360DEG  
 C Interval: 10.0DEG  
 Test Speed: HIGH  
 Temperature:25.3DEG  
 Operators:LQL  
 Test Date:20 July 2023

g Range: 0 - 90DEG  
 Interval: 2.0DEG  
 Test System:EVERFINE GO-2000B\_V1 SYSTEM V2.0.403  
 Humidity:65.0%  
 Test Distance:10.365m [K=1.0000]  
 Remarks: SMD G5S10W700LR

LUMINANCE LIMITATION CURVES

Test:U:230.72V I:0.0415A P:8.6253W PF:0.9003 Freq:49.99Hz Lamp Flux:219.409x1 lm		
NAME: Walloo plus 25 6.5W double CCT LED outdoor WARE:light	WEIGHT:	
SPEC.:	DIM.:	SERIAL No.:
MFR.: CG LIGHTING	SUR.:	Shielding Angle:



LUMINANCE cd/(m2)		
G( DEG)	C0/180	C90/270
85	5	929
80	2	522
75	1	422
70	1	378
65	1	497
60	1	778
55	1	1727
50	0	2303
45	0	2749

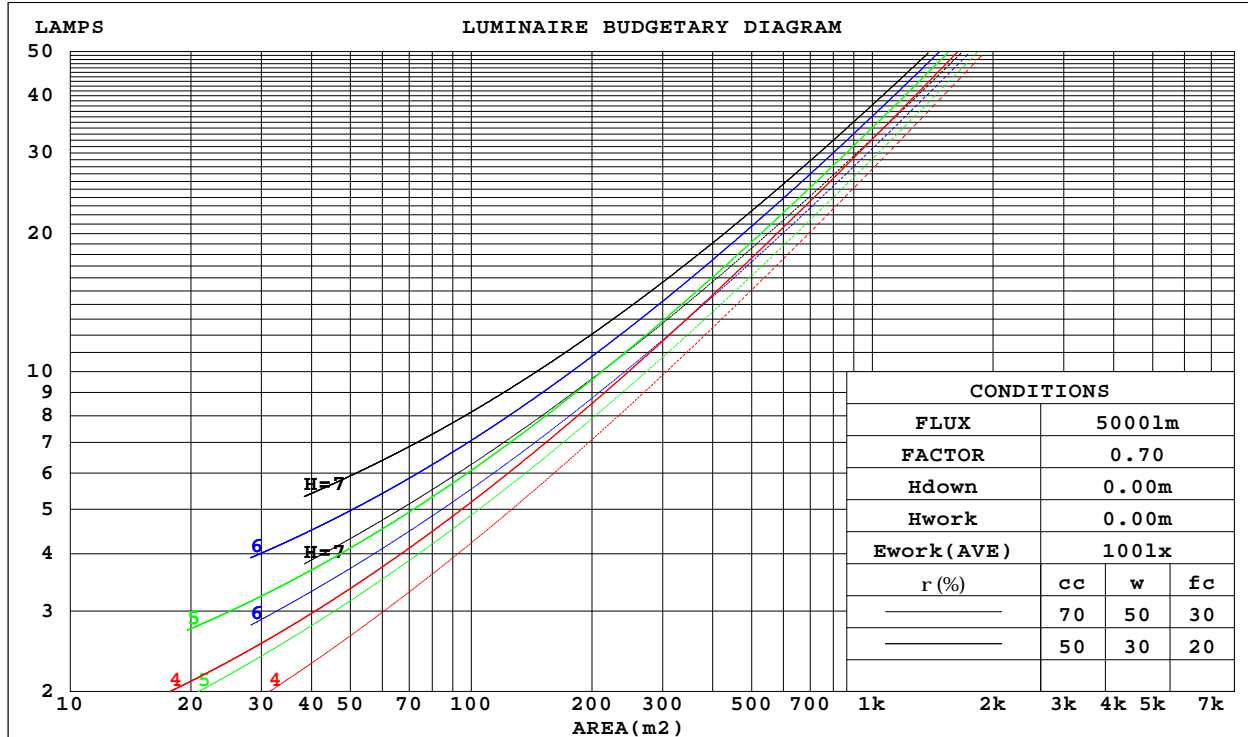
C Range: 0 - 360DEG  
 C Interval: 10.0DEG  
 Test Speed: HIGH  
 Temperature:25.3DEG  
 Operators:LQL  
 Test Date:20 July 2023

G Range: 0 - 90DEG  
 G Interval: 2.0DEG  
 Test System:EVERFINE GO-2000B\_V1 SYSTEM V2.0.403  
 Humidity:65.0%  
 Test Distance:10.365m [K=1.0000]  
 Remarks: SMD G5S10W700LR

CU AND LUMINAIRE BUDGETARY ESTIMATE DIAGRAM

Test:U:230.72V I:0.0415A P:8.6253W PF:0.9003 Freq:49.99Hz Lamp Flux:219.409x1 lm		
NAME: Walloo plus 25 6.5W double CCT LED outdoor WARE:light		WEIGHT:
SPEC.:		SERIAL No.:
MFR.: CG LIGHTING		Shielding Angle:

r <sub>cc</sub>	80%			70%			50%			30%			10%			0
r <sub>w</sub>	50%	30%	10%	50%	30%	10%	50%	30%	10%	50%	30%	10%	50%	30%	10%	0
r <sub>fc</sub>	20%			20%			20%			20%			20%			0
RCR	RCR:Room Cavity Ratio						Coefficients of Utilization(CU)									
0.0	1.19	1.19	1.19	1.16	1.16	1.16	1.11	1.11	1.11	1.06	1.06	1.06	1.02	1.02	1.02	1.00
1.0	1.04	.00	.96	1.02	.98	.94	.97	.94	.91	.94	.91	.89	.90	.88	.86	.84
2.0	.90	.83	.77	.88	.82	.77	.85	.79	.75	.81	.77	.73	.78	.75	.71	.69
3.0	.78	.70	.63	.77	.69	.63	.74	.67	.62	.71	.65	.61	.68	.64	.59	.57
4.0	.69	.59	.52	.67	.59	.52	.65	.57	.51	.62	.56	.51	.60	.55	.50	.48
5.0	.60	.51	.44	.59	.50	.44	.57	.49	.43	.55	.48	.43	.53	.47	.42	.40
6.0	.53	.44	.37	.52	.43	.37	.50	.43	.37	.49	.42	.36	.47	.41	.36	.34
7.0	.47	.38	.32	.47	.38	.32	.45	.37	.31	.44	.36	.31	.42	.36	.31	.29
8.0	.42	.33	.27	.42	.33	.27	.40	.33	.27	.39	.32	.27	.38	.31	.27	.25
9.0	.38	.29	.24	.38	.29	.24	.36	.29	.23	.35	.28	.23	.34	.28	.23	.21
10.0	.35	.26	.21	.34	.26	.21	.33	.26	.20	.32	.25	.20	.31	.25	.20	.18



C Range: 0 - 360DEG  
 C Interval: 10.0DEG  
 Test Speed: HIGH  
 Temperature:25.3DEG  
 Operators:LQL  
 Test Date:20 July 2023

g Range: 0 - 90DEG  
 Interval: 2.0DEG  
 Test System:EVERFINE GO-2000B\_V1 SYSTEM V2.0.403  
 Humidity:65.0%  
 Test Distance:10.365m [K=1.0000]  
 Remarks: SMD G5S10W700LR

WEC AND CCEC

Test:U:230.72V I:0.0415A P:8.6253W PF:0.9003 Freq:49.99Hz Lamp Flux:219.409x1 lm		
NAME: Walloo plus 25 6.5W double CCT LED outdoor	WAVE:light	WEIGHT:
SPEC.:	DIM.:	SERIAL No.:
MFR.: CG LIGHTING	SUR.:	Shielding Angle:

rcc	80%			70%			50%			30%			10%			0
rw	50%	30%	10%	50%	30%	10%	50%	30%	10%	50%	30%	10%	50%	30%	10%	0
rfc	20%			20%			20%			20%			20%			0
RCR	RCR:Room Cavity Ratio						Wall Exitance Coefficients(WEC)									
0.0																
1.0	.307	.175	.055	.300	.171	.054	.287	.165	.053	.275	.159	.051	.264	.153	.049	
2.0	.294	.161	.049	.288	.158	.049	.276	.153	.048	.265	.149	.047	.255	.144	.046	
3.0	.276	.147	.044	.270	.145	.044	.260	.141	.043	.250	.137	.042	.241	.134	.041	
4.0	.257	.134	.039	.252	.132	.039	.243	.129	.039	.234	.126	.038	.226	.123	.037	
5.0	.240	.122	.035	.235	.121	.035	.227	.118	.035	.219	.116	.034	.212	.113	.034	
6.0	.224	.112	.032	.220	.111	.032	.212	.109	.032	.205	.107	.031	.199	.105	.031	
7.0	.209	.103	.029	.206	.102	.029	.199	.101	.029	.193	.099	.029	.187	.097	.029	
8.0	.196	.096	.027	.193	.095	.027	.187	.093	.027	.181	.092	.026	.176	.090	.026	
9.0	.184	.089	.025	.181	.088	.025	.176	.087	.025	.171	.086	.024	.166	.084	.024	
10.0	.173	.083	.023	.171	.082	.023	.166	.081	.023	.161	.080	.023	.157	.079	.023	

rcc	80%			70%			50%			30%			10%			0
rw	50%	30%	10%	50%	30%	10%	50%	30%	10%	50%	30%	10%	50%	30%	10%	0
rfc	20%			20%			20%			20%			20%			0
RCR	RCR:Room Cavity Ratio						Ceiling Cavity Exitance Coefficients(CCEC)									
0.0	.190	.190	.190	.163	.163	.163	.111	.111	.111	.064	.064	.064	.020	.020	.020	
1.0	.180	.156	.135	.154	.134	.116	.105	.092	.080	.061	.053	.047	.019	.017	.015	
2.0	.173	.132	.098	.148	.114	.084	.101	.079	.059	.058	.046	.035	.019	.015	.011	
3.0	.166	.114	.073	.142	.099	.064	.097	.069	.045	.056	.040	.026	.018	.013	.009	
4.0	.159	.101	.057	.136	.087	.050	.094	.061	.035	.054	.036	.021	.017	.012	.007	
5.0	.152	.091	.046	.131	.079	.040	.090	.055	.028	.052	.032	.017	.017	.011	.005	
6.0	.146	.083	.038	.125	.072	.033	.086	.050	.023	.050	.030	.014	.016	.010	.005	
7.0	.139	.076	.032	.120	.066	.028	.083	.046	.020	.048	.027	.012	.016	.009	.004	
8.0	.133	.070	.027	.115	.061	.024	.079	.043	.017	.046	.025	.010	.015	.008	.003	
9.0	.127	.066	.024	.110	.057	.021	.076	.040	.015	.044	.024	.009	.014	.008	.003	
10.0	.122	.061	.021	.105	.053	.019	.073	.038	.013	.042	.022	.008	.014	.007	.003	

C Range: 0 - 360DEG  
 C Interval: 10.0DEG  
 Test Speed: HIGH  
 Temperature:25.3DEG  
 Operators:LQL  
 Test Date:20 July 2023

g Range: 0 - 90DEG  
 g Interval: 2.0DEG  
 Test System:EVERFINE GO-2000B\_V1 SYSTEM V2.0.403  
 Humidity:65.0%  
 Test Distance:10.365m [K=1.0000]  
 Remarks: SMD G5S10W700LR

UGR(Unified Glare Rating) Table

Test:U:230.72V I:0.0415A P:8.6253W PF:0.9003 Freq:49.99Hz Lamp Flux:219.409x1 lm										
NAME: Walloo plus 25 6.5W double CCT LED outdoor					WIRE:light			WEIGHT:		
SPEC.:					DIM.:			SERIAL No.:		
MFR.: CG LIGHTING					SUR.:			Shielding Angle:		
ceiling/cavity	0.7	0.7	0.5	0.5	0.3	0.7	0.7	0.5	0.5	0.3
walls	0.5	0.3	0.5	0.3	0.3	0.5	0.3	0.5	0.3	0.3
working plane	0.2	0.2	0.2	0.2	0.2	0.2	0.2	0.2	0.2	0.2
Room dimensions	Viewed crosswise					Viewed endwise				
x = 2H y = 2H	22.7	24.3	23.0	24.5	24.7	23.4	25.0	23.7	25.2	25.4
3H	23.7	25.2	24.0	25.5	25.7	23.3	24.8	23.6	25.0	25.3
4H	24.0	25.4	24.4	25.7	25.9	23.3	24.7	23.6	24.9	25.2
6H	24.1	25.5	24.5	25.7	26.0	23.3	24.6	23.6	24.9	25.2
8H	24.1	25.4	24.5	25.7	26.0	23.3	24.6	23.7	24.9	25.2
12H	24.1	25.3	24.5	25.6	25.9	23.4	24.6	23.8	24.9	25.2
4H 2H	23.6	25.0	23.9	25.3	25.5	23.9	25.3	24.2	25.6	25.8
3H	25.0	26.3	25.4	26.6	26.9	23.9	25.1	24.3	25.4	25.7
4H	25.6	26.7	26.0	27.0	27.4	23.9	25.0	24.3	25.4	25.7
6H	26.0	26.9	26.4	27.3	27.7	24.0	25.0	24.4	25.3	25.7
8H	26.0	26.9	26.5	27.3	27.7	24.1	25.0	24.5	25.4	25.8
12H	26.1	26.9	26.5	27.3	27.7	24.3	25.1	24.7	25.5	25.9
8H 4H	25.6	26.5	26.0	26.9	27.2	24.1	25.0	24.5	25.4	25.8
6H	26.1	26.8	26.5	27.2	27.7	24.3	25.0	24.7	25.4	25.8
8H	26.2	26.9	26.7	27.3	27.8	24.4	25.1	24.9	25.5	26.0
12H	26.3	26.9	26.8	27.4	27.8	24.7	25.2	25.2	25.7	26.2
12H 4H	25.6	26.4	26.0	26.8	27.2	24.1	24.9	24.5	25.3	25.7
6H	26.1	26.7	26.5	27.2	27.6	24.3	25.0	24.8	25.4	25.8
8H	26.3	26.8	26.7	27.3	27.7	24.5	25.1	25.0	25.5	26.0
Variations with the observer position at spacings:										
S = 1.0H	+ 0.6 / - 0.3					+ 0.6 / - 0.7				
1.5H	+ 1.1 / - 1.7					+ 0.5 / - 1.1				
2.0H	+ 1.7 / - 3.9					+ 1.5 / - 3.1				

CIE Pub.117, 219.4 lm Total Lamp Luminous Flux Correct (8log(F/F0) = -5.3)

C Range: 0 - 360DEG  
 C Interval: 10.0DEG  
 Test Speed: HIGH  
 Temperature:25.3DEG  
 Operators:LQL  
 Test Date:20 July 2023

g Range: 0 - 90DEG  
 g Interval: 2.0DEG  
 Test System:EVERFINE GO-2000B\_V1 SYSTEM V2.0.403  
 Humidity:65.0%  
 Test Distance:10.365m [K=1.0000]  
 Remarks: SMD G5S10W700LR

UTILIZATION FACTORS TABLE

Test:U:230.72V I:0.0415A P:8.6253W PF:0.9003 Freq:49.99Hz Lamp Flux:219.409x1 lm		
NAME: Walloo plus 25 6.5W double CCT LED outdoor	WIRE:light	WEIGHT:
SPEC.:	DIM.:	SERIAL No.:
MFR.: CG LIGHTING	SUR.:	Shielding Angle:

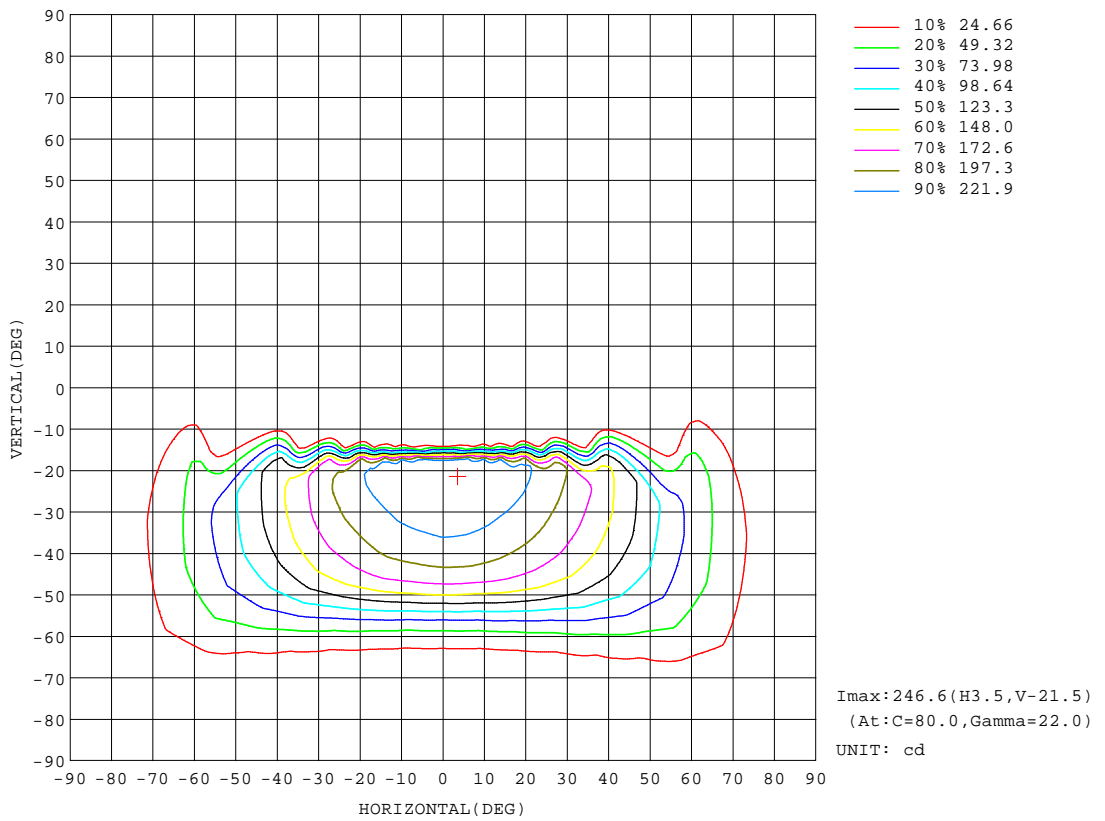
REFLECTANCE										
Ceiling	0.8	0.8	0.8	0.7	0.7	0.7	0.5	0.5	0.5	0
Walls	0.7	0.5	0.3	0.7	0.5	0.3	0.7	0.5	0.3	0
Working plane	0.2	0.2	0.2	0.2	0.2	0.2	0.2	0.2	0.2	0
ROOM INDEX	UTILIZATION FACTORS(PERCENT) $k(RI) \times RCR = 5$									
k = 0.60	53	41	33	52	40	33	51	40	33	26
0.80	64	52	44	63	52	44	61	51	44	36
1.00	74	63	55	73	62	55	71	64	54	47
1.25	82	71	64	81	71	64	78	69	63	55
1.50	88	77	70	86	77	70	83	75	69	61
2.00	95	86	80	93	85	79	90	83	78	70
2.50	99	91	85	97	90	84	93	87	82	74
3.00	102	95	90	100	94	89	96	91	87	78
4.00	106	100	96	104	99	94	99	95	92	83
5.00	108	103	99	106	101	98	101	98	95	85
ROOM INDEX	UF(total)									Direct
According to DIN EN 13032-2 2004			Suspended				SHRNOM = 1.25			

C Range: 0 - 360DEG  
 C Interval: 10.0DEG  
 Test Speed: HIGH  
 Temperature:25.3DEG  
 Operators:LQL  
 Test Date:20 July 2023

g Range: 0 - 90DEG  
 g Interval: 2.0DEG  
 Test System:EVERFINE GO-2000B\_V1 SYSTEM V2.0.403  
 Humidity:65.0%  
 Test Distance:10.365m [K=1.0000]  
 Remarks: SMD G5S10W700LR

ISOCANDELA DIAGRAM

Test:U:230.72V I:0.0415A P:8.6253W PF:0.9003 Freq:49.99Hz Lamp Flux:219.409x1 lm		
NAME: Walloo plus 25 6.5W double CCT LED outdoor WARE:light	WEIGHT:	
SPEC.:	DIM.:	SERIAL No.:
MFR.: CG LIGHTING	SUR.:	Shielding Angle:



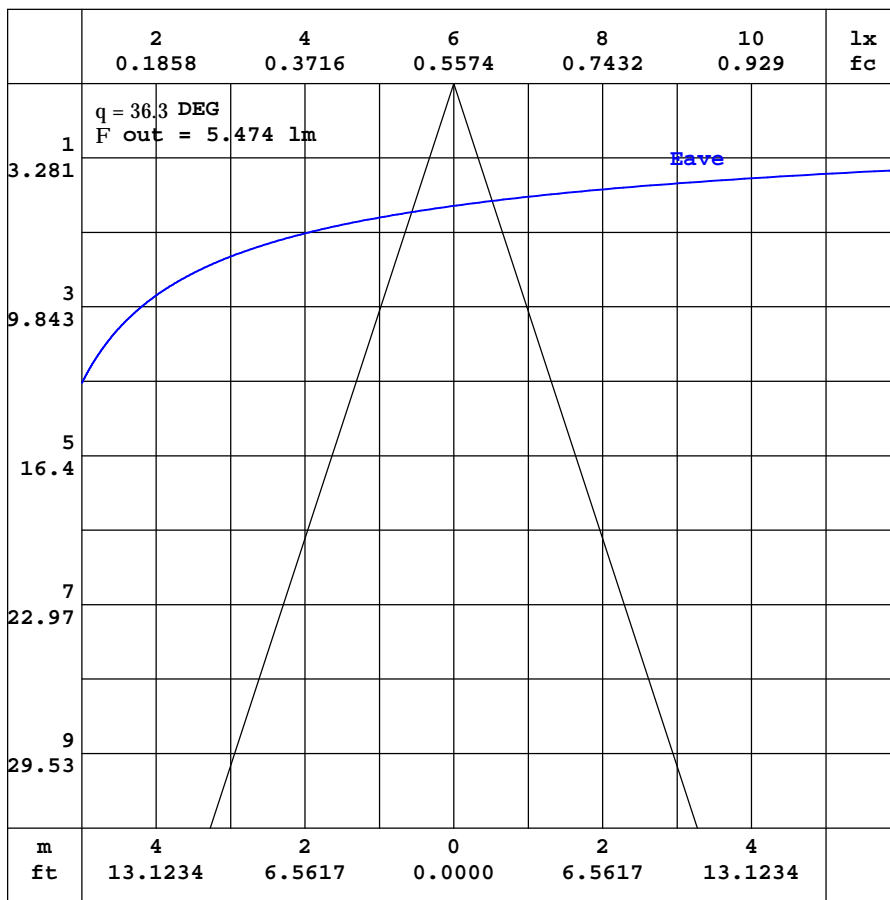
C Range: 0 - 360DEG  
 C Interval: 10.0DEG  
 Test Speed: HIGH  
 Temperature:25.3DEG  
 Operators:LQL  
 Test Date:20 July 2023

Range: 0 - 90DEG  
 Interval: 2.0DEG  
 Test System:EVERFINE GO-2000B\_V1 SYSTEM V2.0.403  
 Humidity:65.0%  
 Test Distance:10.365m [K=1.0000]  
 Remarks: SMD G5S10W700LR



AAI CURVES

Test:U:230.72V I:0.0415A P:8.6253W PF:0.9003 Freq:49.99Hz Lamp Flux:219.409x1 lm		
NAME: Walloo plus 25 6.5W double CCT LED outdoor WARE:light	WEIGHT:	
SPEC.:	DIM.:	SERIAL No.:
MFR.: CG LIGHTING	SUR.:	Shielding Angle:



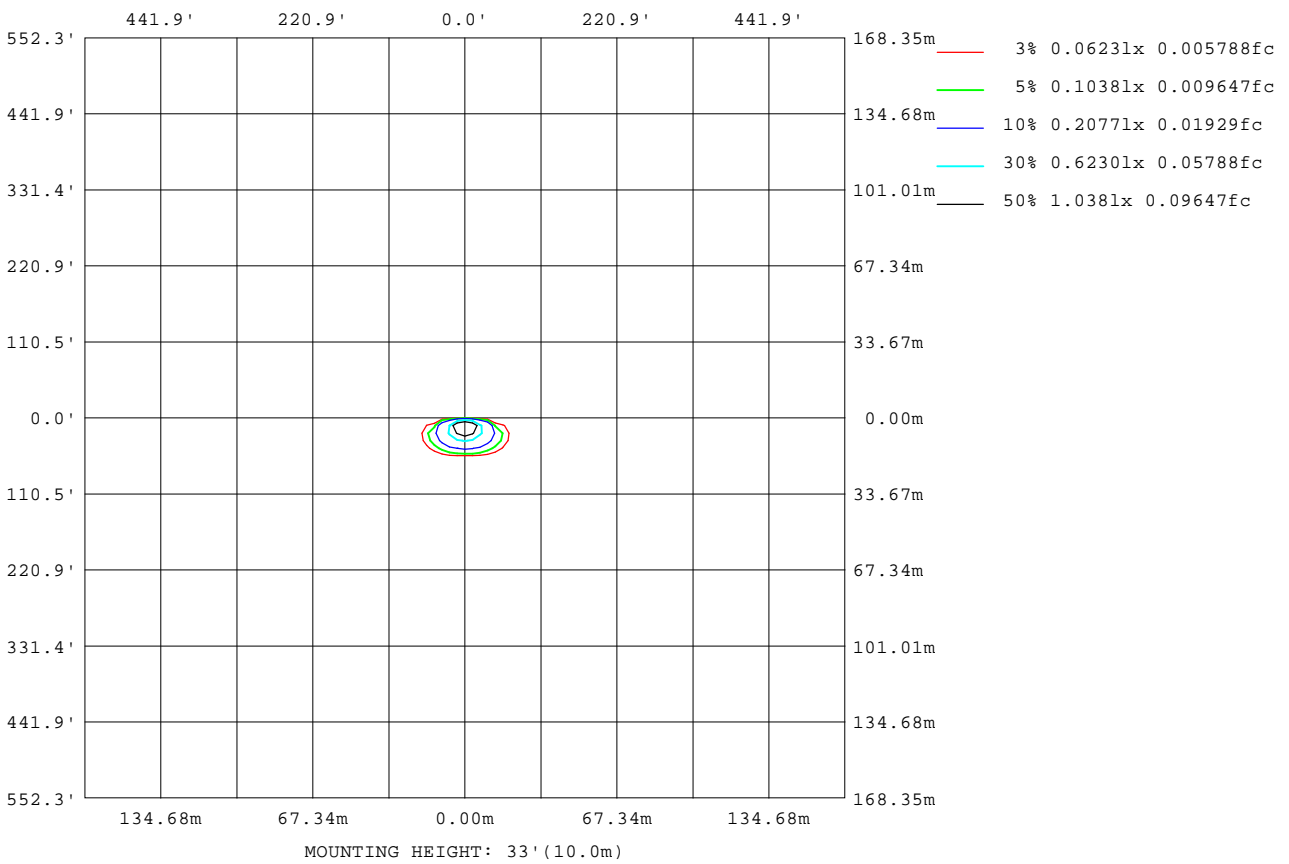
Note:The Curves indicate the illuminated area and the average illumination when the luminaire is at different distance.

C Range: 0 - 360DEG  
 C Interval: 10.0DEG  
 Test Speed: HIGH  
 Temperature:25.3DEG  
 Operators:LQL  
 Test Date:20 July 2023

Range: 0 - 90DEG  
 Interval: 2.0DEG  
 Test System:EVERFINE GO-2000B\_V1 SYSTEM V2.0.403  
 Humidity:65.0%  
 Test Distance:10.365m [K=1.0000]  
 Remarks: SMD G5S10W700LR

**ISOLUX DIAGRAM**

Test:U:230.72V I:0.0415A P:8.6253W PF:0.9003 Freq:49.99Hz Lamp Flux:219.409x1 lm		
NAME: Walloo plus 25 6.5W double CCT LED outdoor	WAVE:light	WEIGHT:
SPEC.:	DIM.:	SERIAL No.:
MFR.: CG LIGHTING	SUR.:	Shielding Angle:



C Range: 0 - 360DEG  
 C Interval: 10.0DEG  
 Test Speed: HIGH  
 Temperature:25.3DEG  
 Operators:LQL  
 Test Date:20 July 2023

Range: 0 - 90DEG  
 Interval: 2.0DEG  
 Test System:EVERFINE GO-2000B\_V1 SYSTEM V2.0.403  
 Humidity:65.0%  
 Test Distance:10.365m [K=1.0000]  
 Remarks: SMD G5S10W700LR

LED Avg.L Report

Test:U:230.72V I:0.0415A P:8.6253W PF:0.9003 Freq:49.99Hz Lamp Flux:219.409x1 lm		
NAME: Walloo plus 25 6.5W double CCT LED outdoor	WAVE:light	WEIGHT:
SPEC.:	DIM.:	SERIAL No.:
MFR.: CG LIGHTING	SUR.:	Shielding Angle:

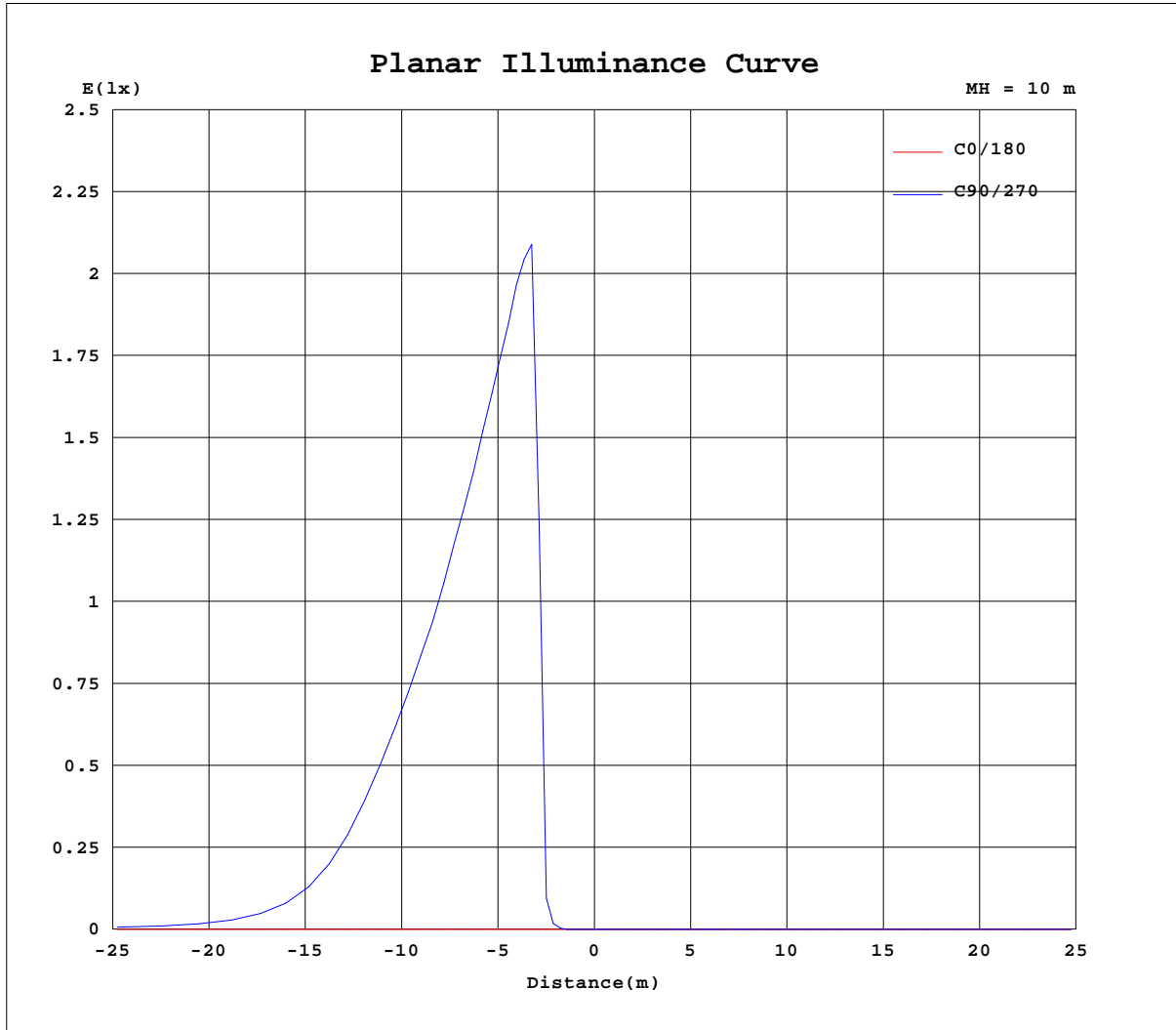
AvgL	cd/m2
L_0~180(65)av	1
L_0~180(75)av	2
L_0~180(85)av	12
L_90~270(65)av	221
L_90~270(75)av	205
L_90~270(85)av	463
L_45(65)av	756
L_45(75)av	261
L_45(85)av	388

Standard: GB/T 29293-2012

C Range: 0 - 360DEG  
 C Interval: 10.0DEG  
 Test Speed: HIGH  
 Temperature:25.3DEG  
 Operators:LQL  
 Test Date:20 July 2023

g Range: 0 - 90DEG  
 g Interval: 2.0DEG  
 Test System:EVERFINE GO-2000B\_V1 SYSTEM V2.0.403  
 Humidity:65.0%  
 Test Distance:10.365m [K=1.0000]  
 Remarks: SMD G5S10W700LR

Planar Illuminance Curve



C Range: 0 - 360DEG  
 C Interval: 10.0DEG  
 Test Speed: HIGH  
 Temperature: 25.3DEG  
 Operators: LQL  
 Test Date: 20 July 2023

Page Range: 0 - 90DEG  
 Interval: 2.0DEG  
 Test System: EVERFINE GO-2000B\_V1 SYSTEM V2.0.403  
 Humidity: 65.0%  
 Test Distance: 10.365m [K=1.0000]  
 Remarks: SMD G5S10W700LR



