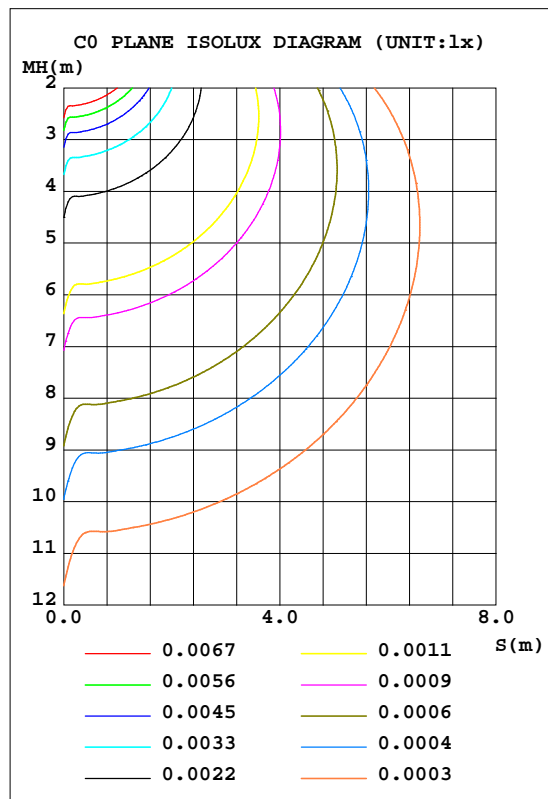
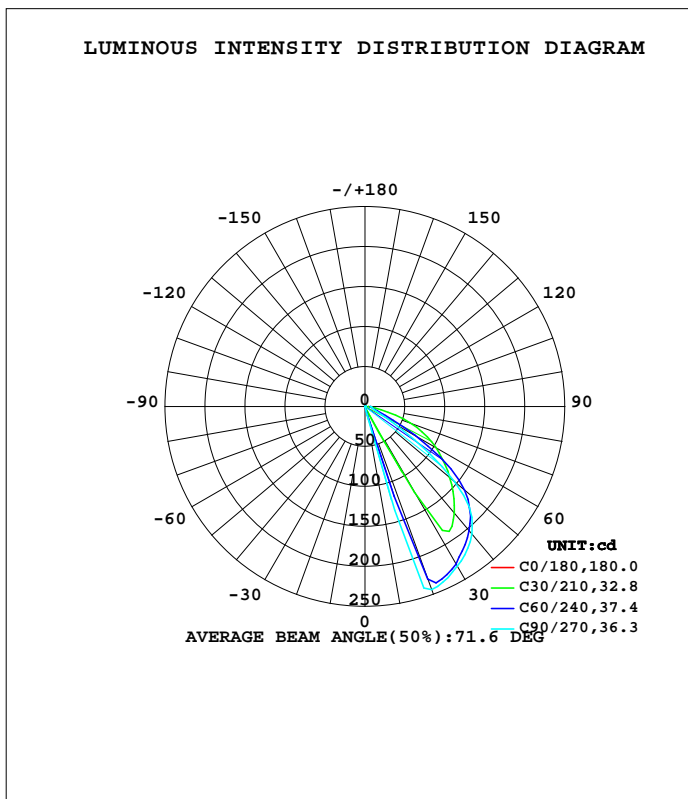


LUMINAIRE PHOTOMETRIC TEST REPORT

Test:U:230.72V I:0.0409A P:8.4846W PF:0.8975 Freq:49.99Hz Lamp Flux:218.51lx1 lm		
NAME: Walloo plus 25 6.5W double CCT LED outdoor	WAVE: light	WEIGHT:
SPEC.:	DIM.:	SERIAL No.:
MFR.: CG LIGHTING	SUR.:	Shielding Angle:

DATA OF LAMP		PHOTOMETRIC DATA				Eff: 25.75 lm/W
MODEL	2199ACCT-Q5	I _{max} (cd)	243.5	S/MH(C0/180)	0.92	
NOMINAL POWER(W)		LOR(%)	100.0	S/MH(C90/270)	1.04	
RATED VOLTAGE(V)	230.0	TOTAL FLUX(lm)	218.51	h UP, DN(C0-180)	0.0,99.8	
NOMINAL FLUX(lm)	218.511	CIE CLASS	DIRECT	h UP, DN(C180-360)	0.0,0.2	
LAMPS INSIDE	1	h up(%)	0.0	CIBSE SHR NOM	0.00	
TEST VOLTAGE(V)	230.0	h down(%)	100.0	CIBSE SHR MAX	1.00	



C Range: 0 - 360DEG
 C Interval: 10.0DEG
 Test Speed: HIGH
 Temperature:25.3DEG
 Operators:LQL
 Test Date:20 July 2023

Range: 0 - 90DEG
 Interval: 2.0DEG
 Test System:EVERFINE GO-2000B_V1 SYSTEM V2.0.403
 Humidity:65.0%
 Test Distance:10.365m [K=1.0000]
 Remarks: SMD G5S10W700LR

ZONAL FLUX DIAGRAM

ZONAL FLUX DIAGRAM:

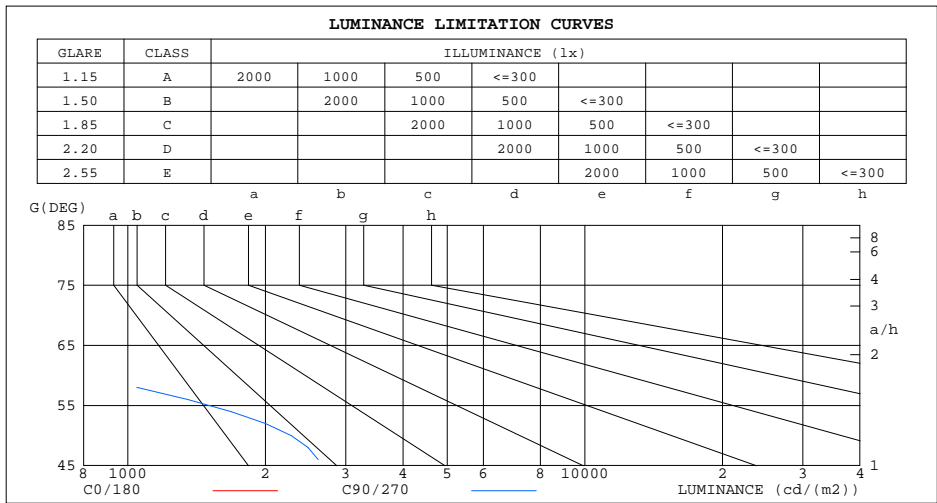
g	C0	C45	C90	C135	C180	C225	C270	C315	g	F zone	F total	%lum,lamp
10	0.0372	0.0564	0.4080	0.1567	0.0298	0.0335	0.0372	0.1191	0- 10	0.0078	0.0078	0.00,0.00
20	0.0372	50.66	243.5	44.36	0.0298	0.0335	0.0372	0.0968	10- 20	5.383	5.391	2.47,2.47
30	0.0372	220.2	230.6	215.7	0.0298	0.0409	0.0372	0.0968	20- 30	31.06	36.45	16.7,16.7
40	0.0372	194.0	208.2	188.9	0.0298	0.0409	0.0372	0.0968	30- 40	47.74	84.20	38.5,38.5
50	0.0372	157.4	146.6	153.3	0.0298	0.0409	0.0372	0.1005	40- 50	54.69	138.9	63.6,63.6
60	0.0372	102.4	39.69	99.51	0.0521	0.0484	0.0372	0.1005	50- 60	42.52	181.4	83,83
70	0.0372	33.26	12.96	31.16	0.0745	0.0819	0.0372	0.1229	60- 70	23.26	204.7	93.7,93.7
80	0.0372	8.620	9.027	8.336	0.1043	0.2085	0.1116	0.2530	70- 80	9.996	214.7	98.2,98.2
90	0.1265	5.363	7.138	5.382	0.1340	0.4689	0.3424	0.4764	80- 90	3.843	218.5	100,100
100									90-100			
110									100-110			
120									110-120			
130									120-130			
140									130-140			
150									140-150			
160									150-160			
170									160-170			
180									170-180			
DEG	LUMINOUS INTENSITY:cd									UNIT:lm		

C Range: 0 - 360DEG
 C Interval: 10.0DEG
 Test Speed: HIGH
 Temperature:25.3DEG
 Operators:LQL
 Test Date:20 July 2023

g Range: 0 - 90DEG
 Interval: 2.0DEG
 Test System:EVERFINE GO-2000B_V1 SYSTEM V2.0.403
 Humidity:65.0%
 Test Distance:10.365m [K=1.0000]
 Remarks: SMD G5S10W700LR

LUMINANCE LIMITATION CURVES

Test:U:230.72V I:0.0409A P:8.4846W PF:0.8975 Freq:49.99Hz Lamp Flux:218.51lx1 lm		
NAME: Walloo plus 25 6.5W double CCT LED outdoor WARE:light	WEIGHT:	
SPEC.:	DIM.:	SERIAL No.:
MFR.: CG LIGHTING	SUR.:	Shielding Angle:



LUMINANCE cd/(m2)		
G(DEG)	C0/180	C90/270
85	5	927
80	2	520
75	1	421
70	1	379
65	1	508
60	1	794
55	1	1726
50	1	2280
45	1	2727

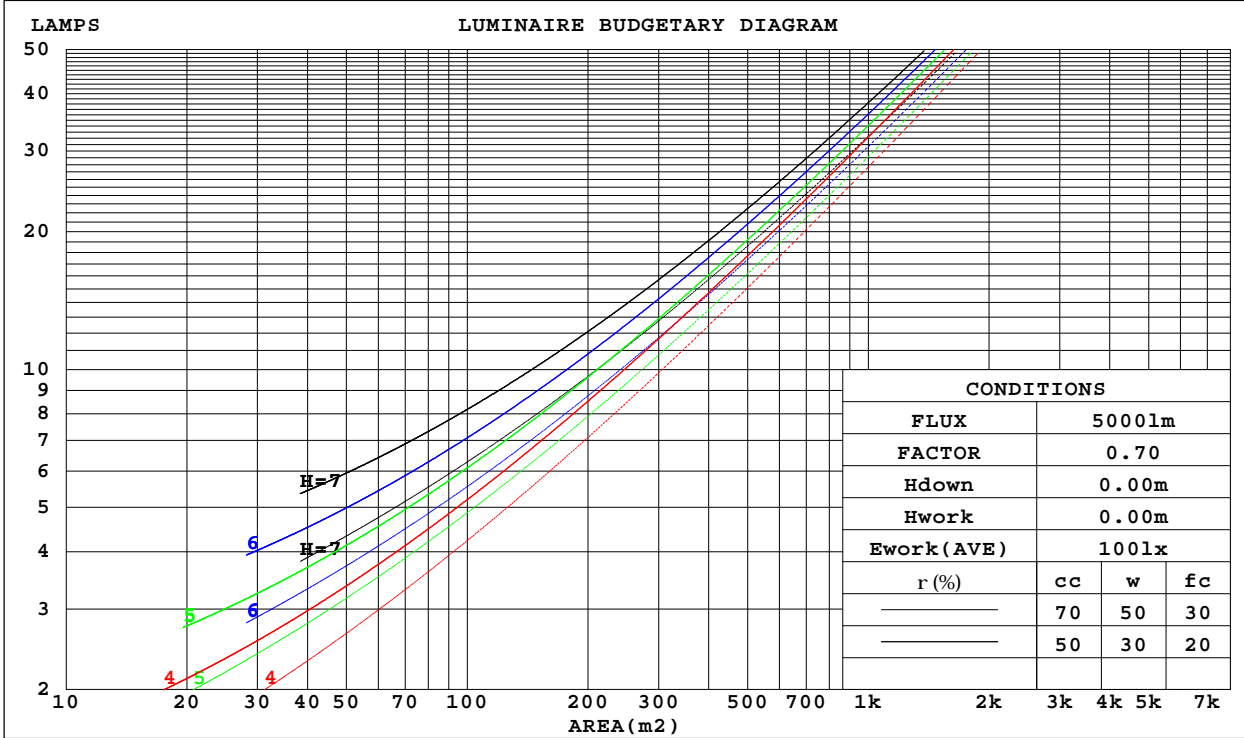
C Range: 0 - 360DEG
 C Interval: 10.0DEG
 Test Speed: HIGH
 Temperature:25.3DEG
 Operators:LQL
 Test Date:20 July 2023

G Range: 0 - 90DEG
 G Interval: 2.0DEG
 Test System:EVERFINE GO-2000B_V1 SYSTEM V2.0.403
 Humidity:65.0%
 Test Distance:10.365m [K=1.0000]
 Remarks: SMD G5S10W700LR

CU AND LUMINAIRE BUDGETARY ESTIMATE DIAGRAM

Test:U:230.72V I:0.0409A P:8.4846W PF:0.8975 Freq:49.99Hz Lamp Flux:218.51lx1 lm		
NAME: Walloo plus 25 6.5W double CCT LED outdoor WARE:light		WEIGHT:
SPEC.:		SERIAL No.:
MFR.: CG LIGHTING		Shielding Angle:

r _{cc}	80%			70%			50%			30%			10%			0
r _w	50%	30%	10%	50%	30%	10%	50%	30%	10%	50%	30%	10%	50%	30%	10%	0
r _{fc}	20%			20%			20%			20%			20%			0
RCR	RCR:Room Cavity Ratio						Coefficients of Utilization(CU)									
0.0	1.19	1.19	1.19	1.16	1.16	1.16	1.11	1.11	1.11	1.06	1.06	1.06	1.02	1.02	1.02	1.00
1.0	1.04	.00	.96	1.02	.98	.94	.97	.94	.91	.94	.91	.88	.90	.88	.86	.84
2.0	.90	.83	.77	.88	.82	.76	.85	.79	.75	.81	.77	.73	.78	.75	.71	.69
3.0	.78	.70	.63	.77	.69	.63	.74	.67	.62	.71	.65	.60	.68	.64	.59	.57
4.0	.68	.59	.52	.67	.59	.52	.65	.57	.51	.62	.56	.50	.60	.54	.50	.48
5.0	.60	.51	.44	.59	.50	.44	.57	.49	.43	.55	.48	.43	.53	.47	.42	.40
6.0	.53	.44	.37	.52	.43	.37	.50	.42	.36	.49	.42	.36	.47	.41	.36	.34
7.0	.47	.38	.32	.46	.38	.31	.45	.37	.31	.43	.36	.31	.42	.36	.31	.29
8.0	.42	.33	.27	.42	.33	.27	.40	.32	.27	.39	.32	.27	.38	.31	.26	.24
9.0	.38	.29	.23	.38	.29	.23	.36	.29	.23	.35	.28	.23	.34	.28	.23	.21
10.0	.34	.26	.20	.34	.26	.20	.33	.25	.20	.32	.25	.20	.31	.25	.20	.18



C Range: 0 - 360DEG
 C Interval: 10.0DEG
 Test Speed: HIGH
 Temperature:25.3DEG
 Operators:LQL
 Test Date:20 July 2023

Range: 0 - 90DEG
 Interval: 2.0DEG
 Test System:EVERFINE GO-2000B_V1 SYSTEM V2.0.403
 Humidity:65.0%
 Test Distance:10.365m [K=1.0000]
 Remarks: SMD G5S10W700LR

WEC AND CCEC

Test:U:230.72V I:0.0409A P:8.4846W PF:0.8975 Freq:49.99Hz Lamp Flux:218.51lx1 lm		
NAME: Walloo plus 25 6.5W double CCT LED outdoor	WAVE:light	WEIGHT:
SPEC.:	DIM.:	SERIAL No.:
MFR.: CG LIGHTING	SUR.:	Shielding Angle:

rcc	80%			70%			50%			30%			10%			0
rw	50%	30%	10%	50%	30%	10%	50%	30%	10%	50%	30%	10%	50%	30%	10%	0
rfc	20%			20%			20%			20%			20%			0
RCR	RCR:Room Cavity Ratio						Wall Exitance Coefficients(WEC)									
0.0																
1.0	.308	.175	.056	.301	.172	.055	.288	.165	.053	.276	.159	.051	.264	.153	.049	
2.0	.295	.162	.050	.288	.159	.049	.277	.154	.048	.266	.149	.047	.256	.145	.046	
3.0	.276	.147	.044	.271	.145	.044	.260	.141	.043	.251	.137	.042	.242	.134	.041	
4.0	.258	.134	.039	.253	.132	.039	.244	.129	.039	.235	.126	.038	.227	.123	.038	
5.0	.240	.122	.035	.236	.121	.035	.228	.118	.035	.220	.116	.035	.213	.114	.034	
6.0	.224	.112	.032	.220	.111	.032	.213	.109	.032	.206	.107	.031	.199	.105	.031	
7.0	.209	.104	.029	.206	.103	.029	.199	.101	.029	.193	.099	.029	.187	.097	.029	
8.0	.196	.096	.027	.193	.095	.027	.187	.093	.027	.181	.092	.027	.176	.090	.026	
9.0	.184	.089	.025	.181	.088	.025	.176	.087	.025	.171	.086	.025	.166	.084	.024	
10.0	.173	.083	.023	.171	.083	.023	.166	.081	.023	.161	.080	.023	.157	.079	.023	

rcc	80%			70%			50%			30%			10%			0
rw	50%	30%	10%	50%	30%	10%	50%	30%	10%	50%	30%	10%	50%	30%	10%	0
rfc	20%			20%			20%			20%			20%			0
RCR	RCR:Room Cavity Ratio						Ceiling Cavity Exitance Coefficients(CCEC)									
0.0	.190	.190	.190	.163	.163	.163	.111	.111	.111	.064	.064	.064	.020	.020	.020	
1.0	.180	.156	.134	.154	.134	.116	.105	.092	.080	.061	.053	.047	.019	.017	.015	
2.0	.173	.132	.098	.148	.114	.084	.101	.079	.059	.058	.046	.035	.019	.015	.011	
3.0	.166	.114	.073	.142	.099	.064	.098	.069	.045	.056	.040	.026	.018	.013	.009	
4.0	.159	.101	.057	.136	.087	.050	.094	.061	.035	.054	.036	.021	.017	.012	.007	
5.0	.152	.091	.046	.131	.079	.040	.090	.055	.028	.052	.032	.017	.017	.011	.005	
6.0	.146	.083	.038	.125	.072	.033	.086	.050	.023	.050	.030	.014	.016	.010	.005	
7.0	.139	.076	.032	.120	.066	.028	.083	.046	.020	.048	.027	.012	.016	.009	.004	
8.0	.133	.070	.027	.115	.061	.024	.079	.043	.017	.046	.025	.010	.015	.008	.003	
9.0	.127	.066	.024	.110	.057	.021	.076	.040	.015	.044	.024	.009	.014	.008	.003	
10.0	.122	.061	.021	.105	.053	.019	.073	.038	.013	.042	.022	.008	.014	.007	.003	

C Range: 0 - 360DEG
 C Interval: 10.0DEG
 Test Speed: HIGH
 Temperature:25.3DEG
 Operators:LQL
 Test Date:20 July 2023

g Range: 0 - 90DEG
 g Interval: 2.0DEG
 Test System:EVERFINE GO-2000B_V1 SYSTEM V2.0.403
 Humidity:65.0%
 Test Distance:10.365m [K=1.0000]
 Remarks: SMD G5S10W700LR

UGR(Unified Glare Rating) Table

Test:U:230.72V I:0.0409A P:8.4846W PF:0.8975 Freq:49.99Hz Lamp Flux:218.51lx1 lm										
NAME: Walloo plus 25 6.5W double CCT LED outdoor					WIRE:light			WEIGHT:		
SPEC.:					DIM.:			SERIAL No.:		
MFR.: CG LIGHTING					SUR.:			Shielding Angle:		
ceiling/cavity	0.7	0.7	0.5	0.5	0.3	0.7	0.7	0.5	0.5	0.3
walls	0.5	0.3	0.5	0.3	0.3	0.5	0.3	0.5	0.3	0.3
working plane	0.2	0.2	0.2	0.2	0.2	0.2	0.2	0.2	0.2	0.2
Room dimensions	Viewed crosswise					Viewed endwise				
x = 2H y = 2H	22.5	24.1	22.8	24.3	24.5	23.4	25.0	23.7	25.2	25.4
3H	23.5	25.0	23.8	25.3	25.5	23.3	24.8	23.6	25.0	25.3
4H	23.8	25.2	24.2	25.5	25.7	23.3	24.7	23.6	24.9	25.2
6H	23.9	25.3	24.3	25.5	25.8	23.3	24.6	23.6	24.9	25.2
8H	23.9	25.2	24.3	25.5	25.8	23.4	24.6	23.7	24.9	25.2
12H	23.9	25.1	24.3	25.4	25.7	23.4	24.6	23.8	24.9	25.2
4H 2H	23.4	24.8	23.7	25.1	25.3	23.9	25.3	24.2	25.6	25.8
3H	24.8	26.1	25.2	26.3	26.7	23.9	25.1	24.2	25.4	25.7
4H	25.4	26.5	25.8	26.8	27.2	23.9	25.0	24.3	25.3	25.7
6H	25.8	26.7	26.2	27.1	27.5	24.0	25.0	24.4	25.3	25.7
8H	25.9	26.8	26.3	27.1	27.5	24.1	25.0	24.5	25.4	25.7
12H	25.9	26.7	26.3	27.1	27.5	24.2	25.1	24.7	25.4	25.9
8H 4H	25.4	26.3	25.8	26.7	27.0	24.1	25.0	24.5	25.3	25.7
6H	25.9	26.6	26.3	27.0	27.5	24.2	25.0	24.7	25.4	25.8
8H	26.1	26.7	26.5	27.1	27.6	24.4	25.0	24.8	25.5	25.9
12H	26.2	26.7	26.6	27.2	27.6	24.6	25.2	25.1	25.7	26.1
12H 4H	25.4	26.2	25.8	26.6	27.0	24.1	24.9	24.5	25.3	25.7
6H	25.9	26.5	26.3	27.0	27.4	24.3	24.9	24.7	25.3	25.8
8H	26.1	26.6	26.5	27.1	27.6	24.4	25.0	24.9	25.5	25.9
Variations with the observer position at spacings:										
S = 1.0H	+ 0.6 / - 0.4					+ 0.6 / - 0.7				
1.5H	+ 1.1 / - 1.7					+ 0.5 / - 1.1				
2.0H	+ 1.7 / - 4.0					+ 1.4 / - 3.0				

CIE Pub.117, 218.5 lm Total Lamp Luminous Flux Correct (8log(F/F0) = -5.3)

C Range: 0 - 360DEG
 C Interval: 10.0DEG
 Test Speed: HIGH
 Temperature:25.3DEG
 Operators:LQL
 Test Date:20 July 2023

g Range: 0 - 90DEG
 g Interval: 2.0DEG
 Test System:EVERFINE GO-2000B_V1 SYSTEM V2.0.403
 Humidity:65.0%
 Test Distance:10.365m [K=1.0000]
 Remarks: SMD G5S10W700LR

UTILIZATION FACTORS TABLE

Test:U:230.72V I:0.0409A P:8.4846W PF:0.8975 Freq:49.99Hz Lamp Flux:218.51lx1 lm		
NAME: Walloo plus 25 6.5W double CCT LED outdoor	WIRE:light	WEIGHT:
SPEC.:	DIM.:	SERIAL No.:
MFR.: CG LIGHTING	SUR.:	Shielding Angle:

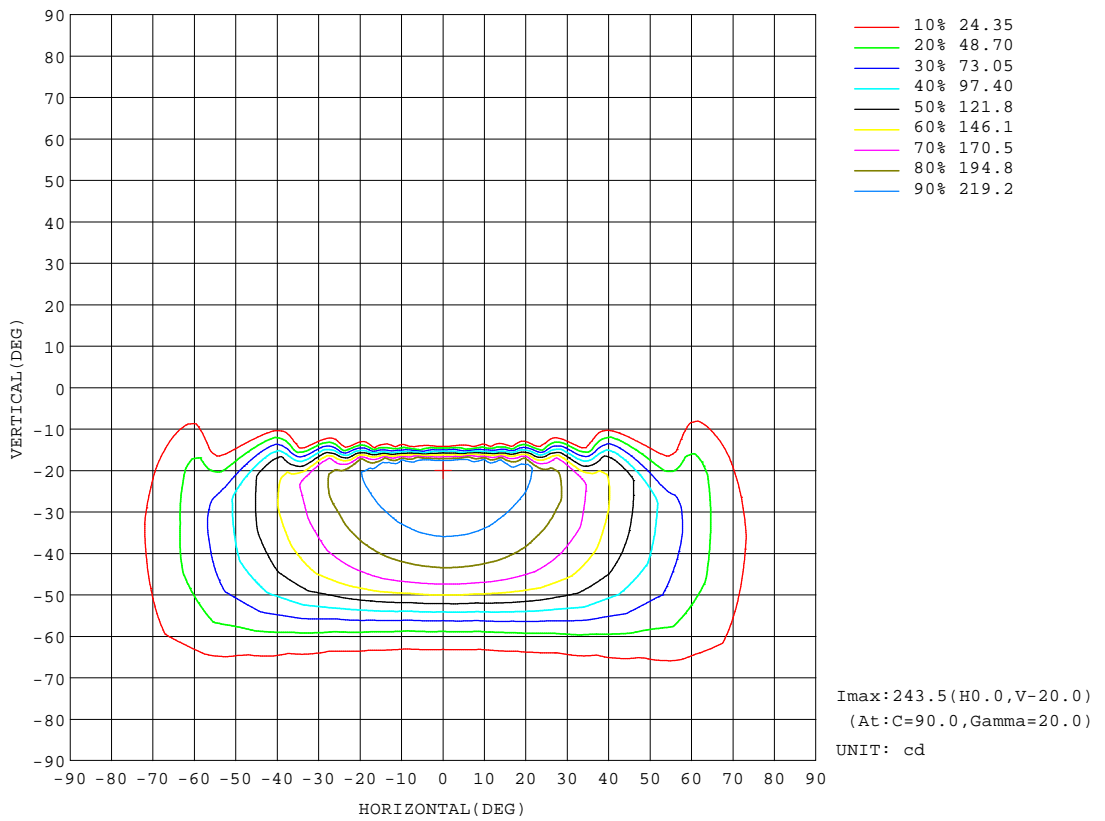
REFLECTANCE										
Ceiling	0.8	0.8	0.8	0.7	0.7	0.7	0.5	0.5	0.5	0
Walls	0.7	0.5	0.3	0.7	0.5	0.3	0.7	0.5	0.3	0
Working plane	0.2	0.2	0.2	0.2	0.2	0.2	0.2	0.2	0.2	0
ROOM INDEX	UTILIZATION FACTORS(PERCENT) $k(RI) \times RCR = 5$									
k = 0.60	53	40	33	52	40	33	51	40	33	26
0.80	64	52	44	63	51	44	61	51	43	36
1.00	74	63	55	73	62	55	71	64	54	47
1.25	82	71	64	81	71	64	78	69	63	55
1.50	87	77	70	86	76	70	83	75	69	61
2.00	95	86	80	93	85	79	89	83	77	70
2.50	99	91	85	97	90	84	93	87	82	74
3.00	102	95	90	100	94	89	96	91	86	78
4.00	106	100	96	104	99	94	99	95	91	83
5.00	108	103	99	106	101	98	101	98	95	85
ROOM INDEX	UF(total)									Direct
According to DIN EN 13032-2 2004			Suspended				SHRNOM = 1.25			

C Range: 0 - 360DEG
 C Interval: 10.0DEG
 Test Speed: HIGH
 Temperature:25.3DEG
 Operators:LQL
 Test Date:20 July 2023

g Range: 0 - 90DEG
 Interval: 2.0DEG
 Test System:EVERFINE GO-2000B_V1 SYSTEM V2.0.403
 Humidity:65.0%
 Test Distance:10.365m [K=1.0000]
 Remarks: SMD G5S10W700LR

ISOCANDELA DIAGRAM

Test:U:230.72V I:0.0409A P:8.4846W PF:0.8975 Freq:49.99Hz Lamp Flux:218.51lx1 lm		
NAME: Walloo plus 25 6.5W double CCT LED outdoor WARE:light	WEIGHT:	
SPEC.:	DIM.:	SERIAL No.:
MFR.: CG LIGHTING	SUR.:	Shielding Angle:

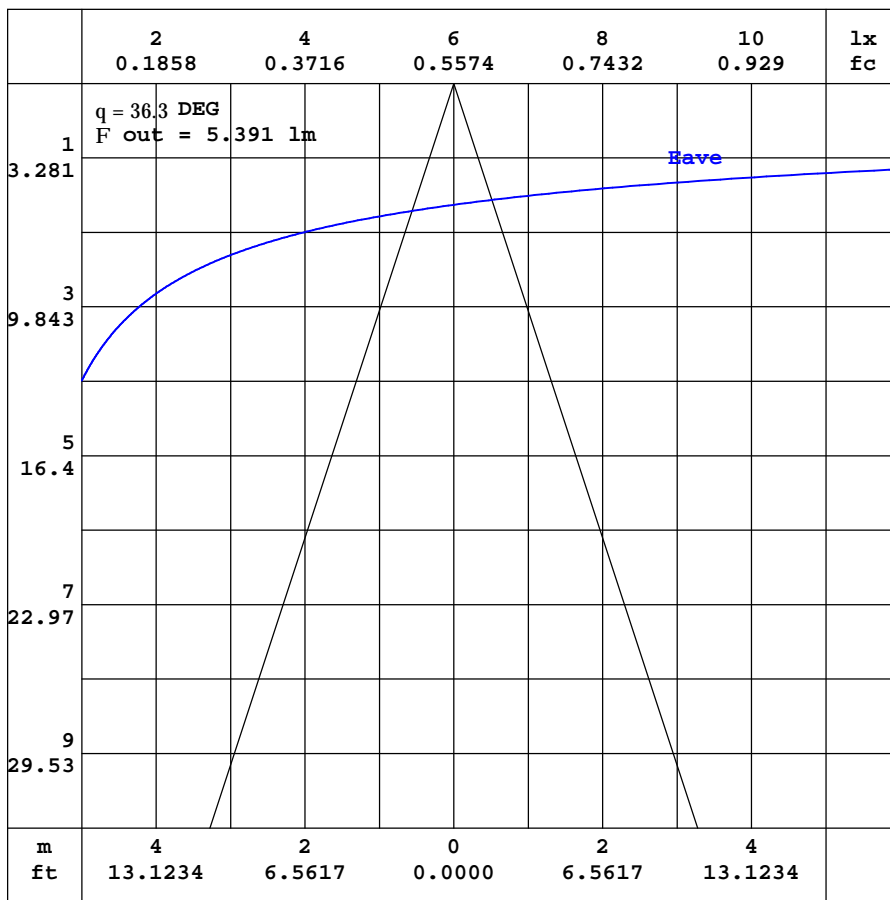


C Range: 0 - 360DEG
 C Interval: 10.0DEG
 Test Speed: HIGH
 Temperature:25.3DEG
 Operators:LQL
 Test Date:20 July 2023

Range: 0 - 90DEG
 Interval: 2.0DEG
 Test System:EVERFINE GO-2000B_V1 SYSTEM V2.0.403
 Humidity:65.0%
 Test Distance:10.365m [K=1.0000]
 Remarks: SMD G5S10W700LR

AAI CURVES

Test:U:230.72V I:0.0409A P:8.4846W PF:0.8975 Freq:49.99Hz Lamp Flux:218.511x1 lm		
NAME: Walloo plus 25 6.5W double CCT LED outdoor	WIRE:light	WEIGHT:
SPEC.:	DIM.:	SERIAL No.:
MFR.: CG LIGHTING	SUR.:	Shielding Angle:



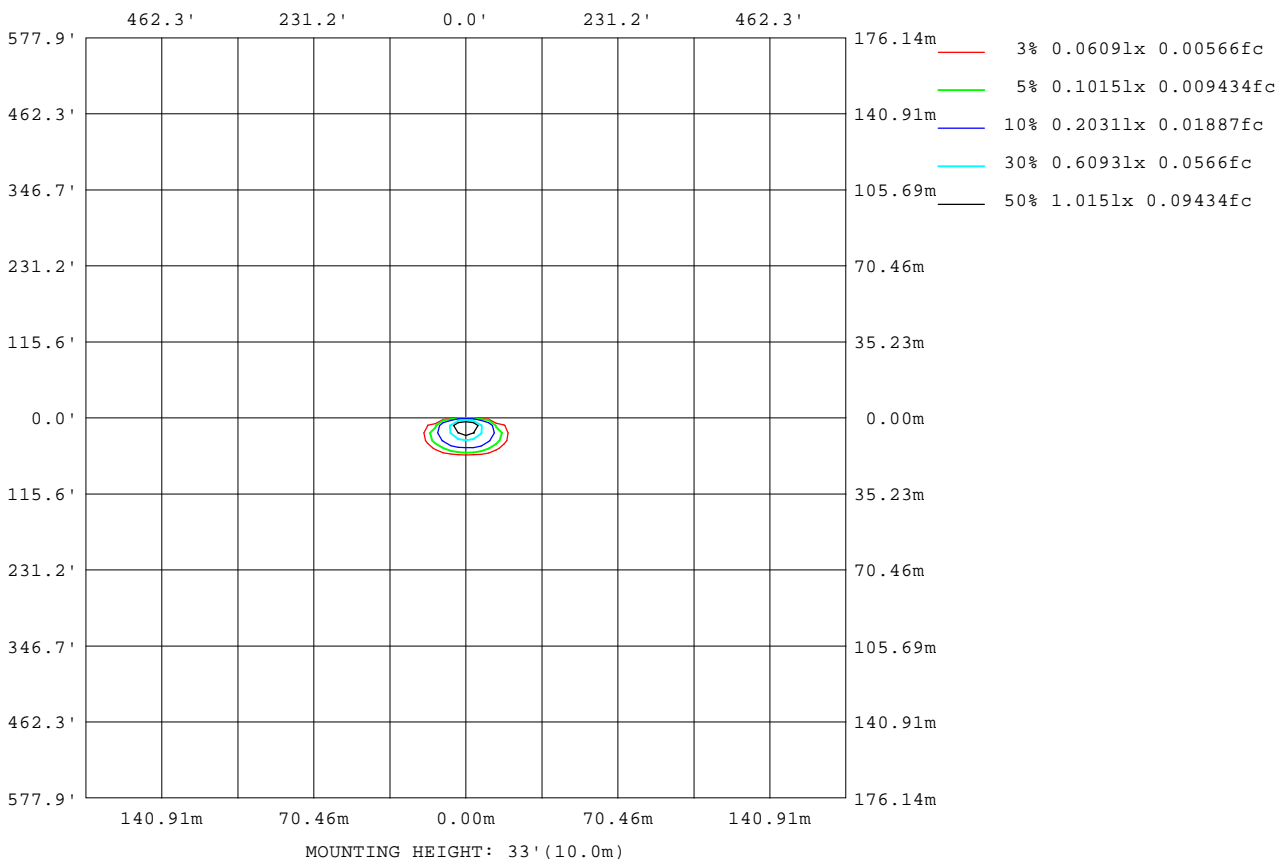
Note:The Curves indicate the illuminated area and the average illumination when the luminaire is at different distance.

C Range: 0 - 360DEG
C Interval: 10.0DEG
Test Speed: HIGH
Temperature:25.3DEG
Operators:LQL
Test Date:20 July 2023

Range: 0 - 90DEG
Interval: 2.0DEG
Test System:EVERFINE GO-2000B_V1 SYSTEM V2.0.403
Humidity:65.0%
Test Distance:10.365m [K=1.0000]
Remarks: SMD G5S10W700LR

ISOLUX DIAGRAM

Test:U:230.72V I:0.0409A P:8.4846W PF:0.8975 Freq:49.99Hz Lamp Flux:218.51lx1 lm		
NAME: Walloo plus 25 6.5W double CCT LED outdoor	WAVE:light	WEIGHT:
SPEC.:	DIM.:	SERIAL No.:
MFR.: CG LIGHTING	SUR.:	Shielding Angle:



C Range: 0 - 360DEG
 C Interval: 10.0DEG
 Test Speed: HIGH
 Temperature: 25.3DEG
 Operators: LQL
 Test Date: 20 July 2023

g Range: 0 - 90DEG
 Interval: 2.0DEG
 Test System: EVERFINE GO-2000B_V1 SYSTEM V2.0.403
 Humidity: 65.0%
 Test Distance: 10.365m [K=1.0000]
 Remarks: SMD G5S10W700LR

LED Avg.L Report

Test:U:230.72V I:0.0409A P:8.4846W PF:0.8975 Freq:49.99Hz Lamp Flux:218.51lx1 lm		
NAME: Walloo plus 25 6.5W double CCT LED outdoor	WAVE:light	WEIGHT:
SPEC.:	DIM.:	SERIAL No.:
MFR.: CG LIGHTING	SUR.:	Shielding Angle:

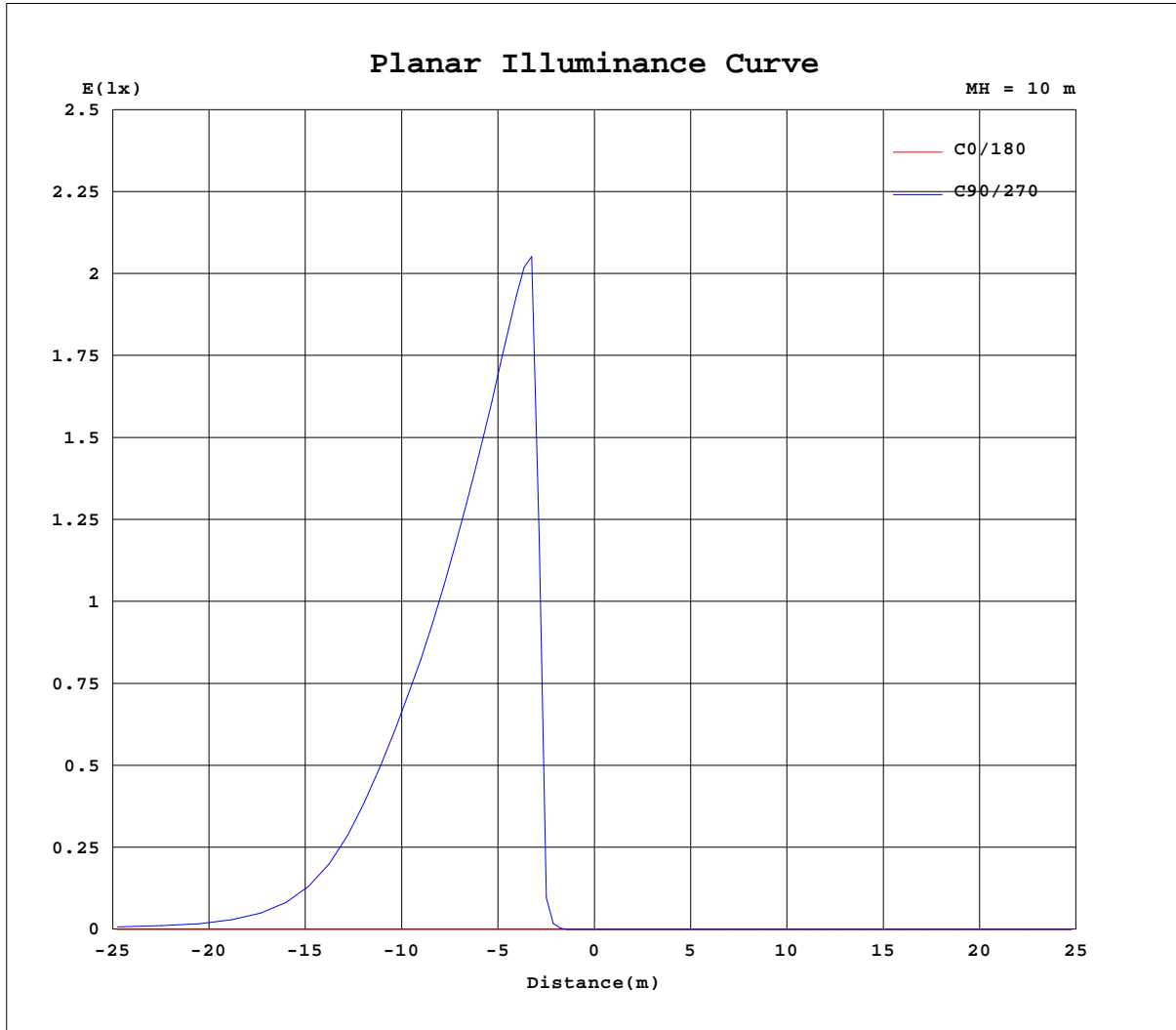
AvgL	cd/m2
L_0~180(65)av	1
L_0~180(75)av	2
L_0~180(85)av	11
L_90~270(65)av	225
L_90~270(75)av	205
L_90~270(85)av	460
L_45(65)av	766
L_45(75)av	267
L_45(85)av	389

Standard: GB/T 29293-2012

C Range: 0 - 360DEG
 C Interval: 10.0DEG
 Test Speed: HIGH
 Temperature:25.3DEG
 Operators:LQL
 Test Date:20 July 2023

g Range: 0 - 90DEG
 g Interval: 2.0DEG
 Test System:EVERFINE GO-2000B_V1 SYSTEM V2.0.403
 Humidity:65.0%
 Test Distance:10.365m [K=1.0000]
 Remarks: SMD G5S10W700LR

Planar Illuminance Curve



C Range: 0 - 360DEG
 C Interval: 10.0DEG
 Test Speed: HIGH
 Temperature: 25.3DEG
 Operators: LQL
 Test Date: 20 July 2023

Page Range: 0 - 90DEG
 Interval: 2.0DEG
 Test System: EVERFINE GO-2000B_V1 SYSTEM V2.0.403
 Humidity: 65.0%
 Test Distance: 10.365m [K=1.0000]
 Remarks: SMD G5S10W700LR

