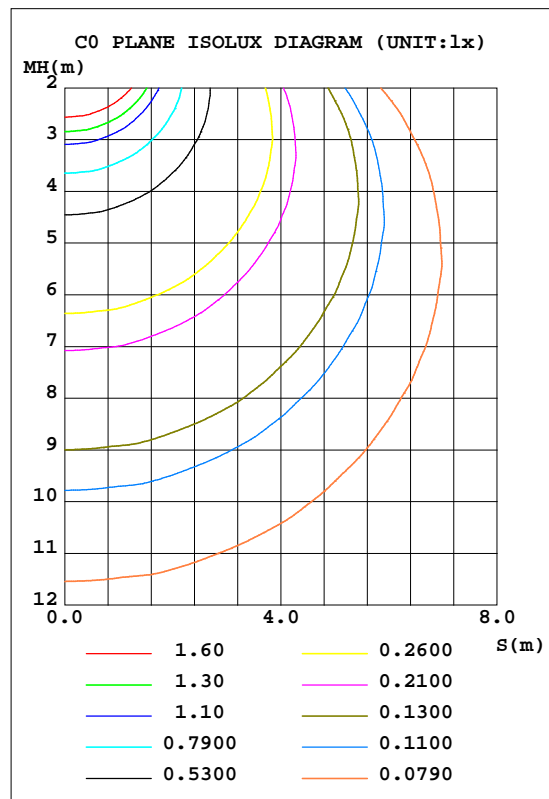
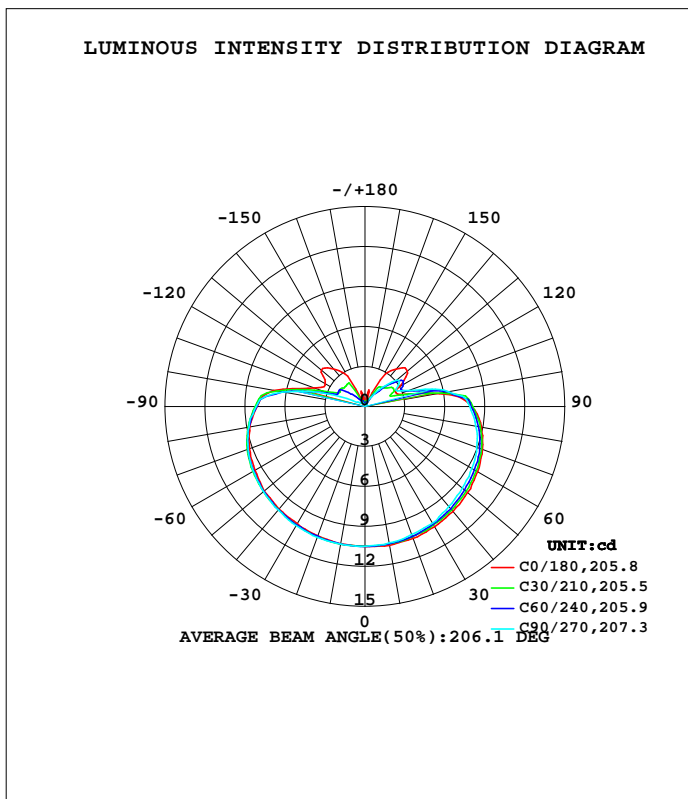


LUMINAIRE PHOTOMETRIC TEST REPORT

Test:U:0.4007V I:0A P:0W PF:0.0000 Freq:0Hz Lamp Flux:79.649x1 lm		
NAME: Bat 1W LED rechargeable portable table light	TYPE:	WEIGHT:
SPEC.:	DIM.:	SERIAL No.:
MFR.: CG LIGHTING	SUR.:	Shielding Angle:

DATA OF LAMP		PHOTOMETRIC DATA			
MODEL	1941AD-N7	I _{max} (cd)	10.58	S/MH(C0/180)	1.47
NOMINAL POWER(W)		LOR(%)	100.0	S/MH(C90/270)	1.50
RATED VOLTAGE(V)	230.0	TOTAL FLUX(lm)	79.649	h UP, DN(C0-180)	13.1, 37.1
NOMINAL FLUX(lm)	79.649	CIE CLASS	SEMI-D.	h UP, DN(C180-360)	12.0, 37.8
LAMPS INSIDE	1	h up(%)	25.1	CIBSE SHR NOM	1.75
TEST VOLTAGE(V)	230.0	h down(%)	74.9	CIBSE SHR MAX	1.75



C Range: 0 - 360DEG
 C Interval: 10.0DEG
 Test Speed: HIGH
 Temperature: 25.3DEG
 Operators: LQL
 Test Date: 24 July 2023

Range: 0 - 180DEG
 Interval: 2.0DEG
 Test System: EVERFINE GO-2000B_V1 SYSTEM V2.0.403
 Humidity: 65.0%
 Test Distance: 10.365m [K=1.0000]
 Remarks: SMD

ZONAL FLUX DIAGRAM

ZONAL FLUX DIAGRAM:

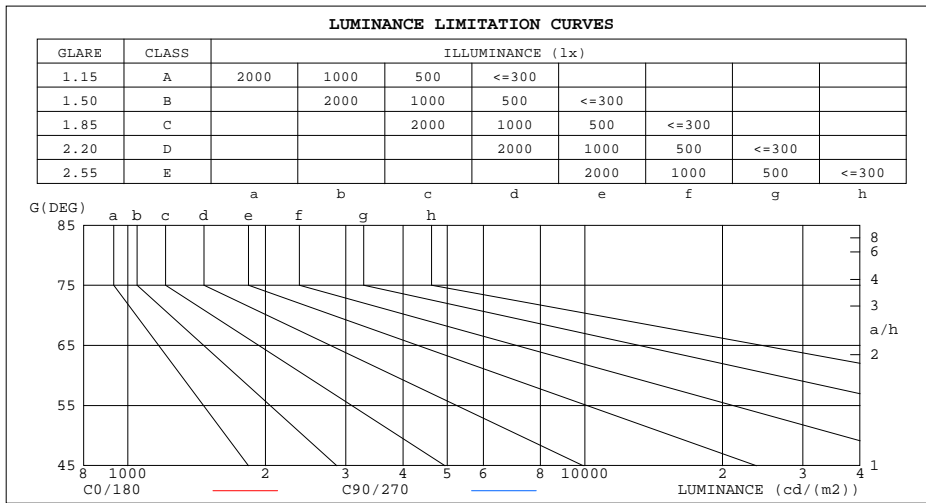
g	C0	C45	C90	C135	C180	C225	C270	C315	g	F zone	F total	%lum,lamp
10	10.58	10.48	10.39	10.41	10.47	10.48	10.50	10.51	0- 10	1.001	1.001	1.26,1.26
20	10.53	10.41	10.22	10.27	10.33	10.40	10.45	10.48	10- 20	2.955	3.956	4.97,4.97
30	10.42	10.26	10.12	10.07	10.15	10.26	10.33	10.37	20- 30	4.774	8.730	11,11
40	10.29	10.06	9.788	9.896	10.05	10.12	10.15	10.20	30- 40	6.377	15.11	19,19
50	10.05	9.833	9.542	9.673	9.870	9.937	9.945	9.996	40- 50	7.707	22.81	28.6,28.6
60	9.773	9.583	9.282	9.420	9.549	9.702	9.677	9.758	50- 60	8.720	31.53	39.6,39.6
70	9.379	9.241	8.939	9.100	9.229	9.367	9.334	9.378	60- 70	9.361	40.89	51.3,51.3
80	8.873	8.694	8.455	8.586	8.783	8.854	8.836	8.813	70- 80	9.538	50.43	63.3,63.3
90	8.010	8.038	7.875	7.961	8.105	8.195	8.181	8.147	80- 90	9.186	59.62	74.9,74.9
100	5.654	4.932	6.378	5.870	6.993	5.991	6.292	5.306	90-100	8.047	67.67	85,85
110	2.681	2.085	3.549	2.662	4.100	2.460	2.638	1.758	100-110	4.626	72.29	90.8,90.8
120	3.005	2.843	2.718	2.728	3.469	2.296	0.6478	2.262	110-120	2.397	74.69	93.8,93.8
130	4.160	2.106	3.080	2.032	4.287	1.656	0.4097	1.604	120-130	2.184	76.87	96.5,96.5
140	3.686	1.247	1.659	1.127	3.676	1.006	0.3498	1.084	130-140	1.606	78.48	98.5,98.5
150	2.325	0.2196	0.4756	0.2012	2.636	0.2122	0.3133	0.2159	140-150	0.8767	79.36	99.6,99.6
160	0.2010	0.2575	0.1786	0.2201	0.2320	0.2085	0.2084	0.2381	150-160	0.1580	79.51	99.8,99.8
170	0.6203	0.1900	0.1786	0.1901	0.6895	0.1936	0.2010	0.1935	160-170	0.1154	79.63	100,100
180	0.1861	0.1861	0.1786	0.1824	0.1935	0.1898	0.1861	0.1861	170-180	0.0199	79.65	100,100
DEG	LUMINOUS INTENSITY:cd									UNIT:lm		

C Range: 0 - 360DEG
 C Interval: 10.0DEG
 Test Speed: HIGH
 Temperature:25.3DEG
 Operators:LQL
 Test Date:24 July 2023

g Range: 0 - 180DEG
 Interval: 2.0DEG
 Test System:EVERFINE GO-2000B_V1 SYSTEM V2.0.403
 Humidity:65.0%
 Test Distance:10.365m [K=1.0000]
 Remarks: SMD

LUMINANCE LIMITATION CURVES

Test:U:0.4007V I:0A P:0W PF:0.0000 Freq:0Hz Lamp Flux:79.649x1 lm		
NAME: Bat 1W LED rechargeable portable table light	TYPE:	WEIGHT:
SPEC.:	DIM.:	SERIAL No.:
MFR.: CG LIGHTING	SUR.:	Shielding Angle:



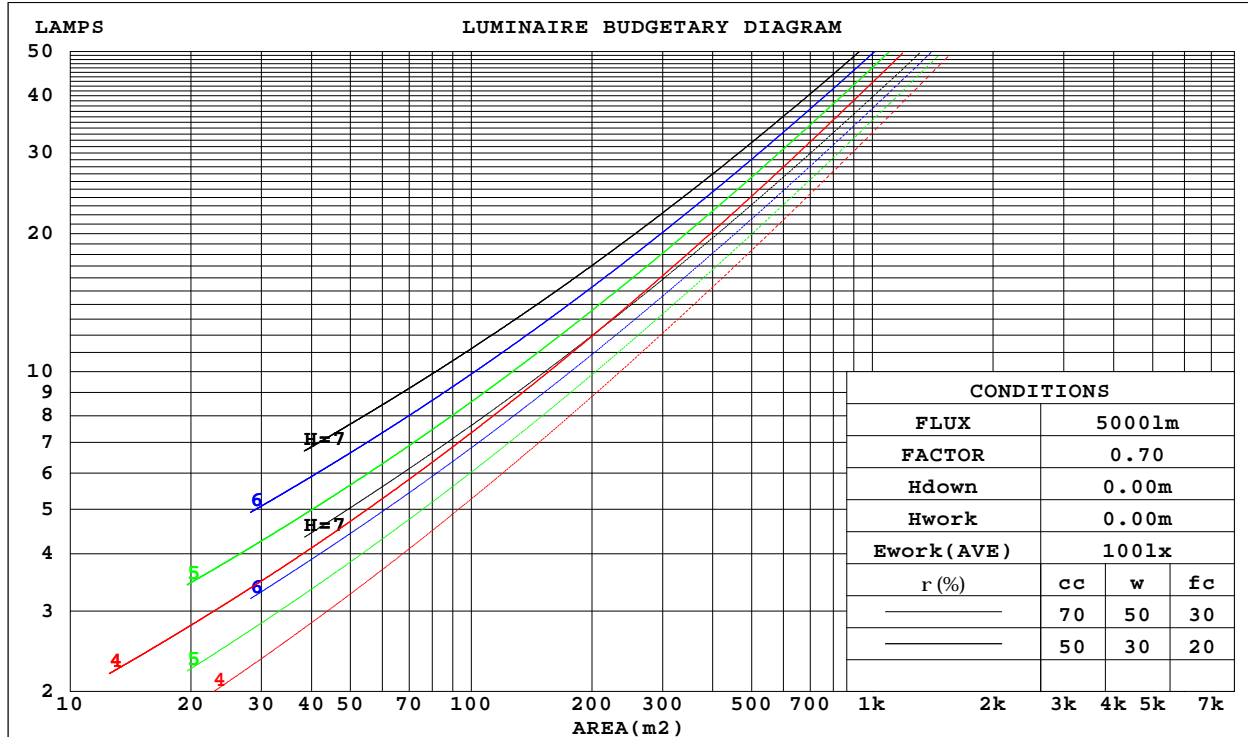
C Range: 0 - 360DEG
 C Interval: 10.0DEG
 Test Speed: HIGH
 Temperature:25.3DEG
 Operators:LQL
 Test Date:24 July 2023

G Range: 0 - 180DEG
 G Interval: 2.0DEG
 Test System:EVERFINE GO-2000B_V1 SYSTEM V2.0.403
 Humidity:65.0%
 Test Distance:10.365m [K=1.0000]
 Remarks: SMD

CU AND LUMINAIRE BUDGETARY ESTIMATE DIAGRAM

Test:U:0.4007V I:0A P:0W PF:0.0000 Freq:0Hz Lamp Flux:79.649x1 lm		
NAME: Bat 1W LED rechargeable portable table lightTYPE:		WEIGHT:
SPEC.:		SERIAL No.:
MFR.: CG LIGHTING		Shielding Angle:

r _{cc}	80%			70%			50%			30%			10%			0
r _w	50%	30%	10%	50%	30%	10%	50%	30%	10%	50%	30%	10%	50%	30%	10%	0
r _{fc}	20%			20%			20%			20%			20%			0
RCR	RCR:Room Cavity Ratio						Coefficients of Utilization(CU)									
0.0	1.13	1.13	1.13	1.08	1.08	1.08	.97	.97	.97	.88	.88	.88	.79	.79	.79	.75
1.0	.91	.85	.79	.86	.80	.75	.77	.72	.68	.69	.65	.62	.61	.58	.56	.51
2.0	.76	.68	.60	.72	.64	.58	.64	.58	.52	.57	.52	.47	.51	.46	.43	.39
3.0	.65	.56	.48	.62	.53	.46	.55	.48	.42	.49	.43	.38	.43	.38	.34	.31
4.0	.57	.47	.39	.54	.45	.38	.48	.40	.34	.43	.36	.31	.38	.32	.28	.25
5.0	.50	.40	.33	.48	.38	.31	.43	.35	.29	.38	.31	.26	.33	.28	.24	.21
6.0	.45	.35	.28	.42	.33	.27	.38	.30	.25	.34	.27	.22	.30	.25	.20	.18
7.0	.40	.31	.24	.38	.29	.23	.34	.27	.21	.31	.24	.19	.27	.22	.18	.15
8.0	.36	.27	.21	.35	.26	.20	.31	.24	.19	.28	.22	.17	.25	.20	.16	.13
9.0	.33	.25	.19	.32	.24	.18	.28	.21	.17	.26	.20	.15	.23	.18	.14	.12
10.0	.30	.22	.17	.29	.21	.16	.26	.19	.15	.24	.18	.14	.21	.16	.12	.10



C Range: 0 - 360DEG
 C Interval: 10.0DEG
 Test Speed: HIGH
 Temperature:25.3DEG
 Operators:LQL
 Test Date:24 July 2023

Range: 0 - 180DEG
 Interval: 2.0DEG
 Test System:EVERFINE GO-2000B_V1 SYSTEM V2.0.403
 Humidity:65.0%
 Test Distance:10.365m [K=1.0000]
 Remarks: SMD

WEC AND CCEC

Test:U:0.4007V I:0A P:0W PF:0.0000 Freq:0Hz Lamp Flux:79.649x1 lm		
NAME: Bat 1W LED rechargeable portable table light	TYPE:	WEIGHT:
SPEC.:	DIM.:	SERIAL No.:
MFR.: CG LIGHTING	SUR.:	Shielding Angle:

rcc	80%			70%			50%			30%			10%			0
rw	50%	30%	10%	50%	30%	10%	50%	30%	10%	50%	30%	10%	50%	30%	10%	0
rfc	20%			20%			20%			20%			20%			0
RCR	RCR:Room Cavity Ratio						Wall Exitance Coefficients(WEC)									
0.0																
1.0	.445	.253	.080	.430	.245	.078	.401	.230	.074	.376	.217	.070	.352	.204	.066	
2.0	.369	.202	.062	.355	.196	.060	.330	.183	.057	.306	.172	.054	.284	.161	.051	
3.0	.320	.170	.051	.308	.165	.050	.284	.154	.047	.263	.144	.044	.243	.134	.042	
4.0	.284	.147	.043	.272	.143	.042	.251	.133	.040	.232	.124	.038	.213	.116	.035	
5.0	.255	.130	.038	.245	.126	.037	.225	.117	.035	.207	.109	.033	.191	.102	.031	
6.0	.231	.116	.033	.222	.112	.032	.205	.105	.030	.188	.098	.029	.173	.091	.027	
7.0	.212	.105	.030	.204	.101	.029	.187	.095	.027	.172	.088	.026	.158	.082	.024	
8.0	.196	.096	.027	.188	.092	.026	.173	.086	.025	.159	.081	.023	.146	.075	.022	
9.0	.182	.088	.025	.174	.085	.024	.161	.079	.023	.148	.074	.021	.135	.069	.020	
10.0	.169	.081	.023	.163	.079	.022	.150	.073	.021	.138	.068	.019	.126	.064	.018	

rcc	80%			70%			50%			30%			10%			0
rw	50%	30%	10%	50%	30%	10%	50%	30%	10%	50%	30%	10%	50%	30%	10%	0
rfc	20%			20%			20%			20%			20%			0
RCR	RCR:Room Cavity Ratio						Ceiling Cavity Exitance Coefficients(CCEC)									
0.0	.382	.382	.382	.327	.327	.327	.223	.223	.223	.128	.128	.128	.041	.041	.041	
1.0	.383	.348	.317	.328	.299	.273	.224	.206	.189	.129	.119	.110	.041	.038	.035	
2.0	.377	.326	.283	.323	.281	.245	.221	.194	.171	.128	.113	.100	.041	.037	.033	
3.0	.370	.310	.263	.317	.268	.228	.218	.186	.160	.126	.109	.094	.040	.035	.031	
4.0	.362	.298	.250	.310	.258	.217	.213	.180	.153	.123	.105	.090	.040	.034	.030	
5.0	.354	.289	.241	.304	.250	.209	.209	.174	.148	.121	.102	.088	.039	.033	.029	
6.0	.346	.281	.234	.297	.243	.204	.205	.170	.144	.119	.100	.086	.038	.033	.028	
7.0	.339	.274	.230	.291	.238	.200	.201	.167	.142	.117	.098	.084	.038	.032	.028	
8.0	.332	.269	.226	.285	.233	.197	.198	.164	.140	.115	.097	.083	.037	.032	.028	
9.0	.325	.264	.223	.280	.229	.195	.194	.161	.138	.113	.095	.082	.037	.031	.027	
10.0	.319	.260	.221	.275	.226	.193	.191	.159	.137	.111	.094	.082	.036	.031	.027	

C Range: 0 - 360DEG
 C Interval: 10.0DEG
 Test Speed: HIGH
 Temperature:25.3DEG
 Operators:LQL
 Test Date:24 July 2023

g Range: 0 - 180DEG
 g Interval: 2.0DEG
 Test System:EVERFINE GO-2000B_V1 SYSTEM V2.0.403
 Humidity:65.0%
 Test Distance:10.365m [K=1.0000]
 Remarks: SMD

UGR(Unified Glare Rating) Table

Test:U:0.4007V I:0A P:0W PF:0.0000 Freq:0Hz Lamp Flux:79.649x1 lm										
NAME: Bat 1W LED rechargeable portable table light						TYPE:		WEIGHT:		
SPEC.:						DIM.:		SERIAL No.:		
MFR.: CG LIGHTING						SUR.:		Shielding Angle:		
ceiling/cavity	0.7	0.7	0.5	0.5	0.3	0.7	0.7	0.5	0.5	0.3
walls	0.5	0.3	0.5	0.3	0.3	0.5	0.3	0.5	0.3	0.3
working plane	0.2	0.2	0.2	0.2	0.2	0.2	0.2	0.2	0.2	0.2
Room dimensions	Viewed crosswise					Viewed endwise				
x = 2H y = 2H	14.1	15.5	14.7	16.1	16.8	13.9	15.3	14.5	15.9	16.6
3H	17.2	18.4	17.8	19.1	19.8	16.9	18.2	17.5	18.8	19.6
4H	18.9	20.1	19.5	20.7	21.5	18.6	19.8	19.2	20.5	21.2
6H	20.7	21.9	21.4	22.6	23.4	20.5	21.6	21.1	22.3	23.1
8H	21.8	22.9	22.5	23.6	24.4	21.5	22.6	22.2	23.3	24.1
12H	23.0	24.0	23.7	24.7	25.6	22.7	23.8	23.4	24.5	25.3
4H 2H	15.1	16.3	15.7	16.9	17.7	14.9	16.1	15.6	16.8	17.6
3H	18.3	19.3	19.0	20.0	20.9	18.1	19.1	18.8	19.8	20.7
4H	20.1	21.1	20.8	21.8	22.7	19.9	20.9	20.6	21.6	22.5
6H	22.2	23.1	22.9	23.8	24.7	21.9	22.8	22.7	23.6	24.4
8H	23.3	24.1	24.0	24.9	25.8	23.1	23.9	23.8	24.6	25.5
12H	24.6	25.4	25.4	26.1	27.1	24.4	25.1	25.1	25.9	26.8
8H 4H	20.8	21.6	21.5	22.4	23.3	20.6	21.5	21.4	22.2	23.1
6H	23.1	23.8	23.9	24.6	25.6	22.9	23.6	23.7	24.4	25.4
8H	24.5	25.1	25.2	25.9	26.9	24.2	24.9	25.0	25.7	26.6
12H	26.0	26.5	26.8	27.4	28.3	25.8	26.3	26.6	27.1	28.1
12H 4H	21.0	21.8	21.7	22.5	23.4	20.8	21.6	21.6	22.4	23.3
6H	23.4	24.1	24.2	24.9	25.8	23.2	23.9	24.0	24.7	25.6
8H	24.9	25.4	25.7	26.2	27.2	24.7	25.3	25.5	26.1	27.0
Variations with the observer position at spacings:										
S = 1.0H	+ 0.1 / - 0.1					+ 0.1 / - 0.1				
1.5H	+ 0.2 / - 0.3					+ 0.2 / - 0.3				
2.0H	+ 0.3 / - 0.4					+ 0.3 / - 0.4				

CIE Pub.117, 79.65 lm Total Lamp Luminous Flux Correct (8log(F/F0) = -8.8)

C Range: 0 - 360DEG
 C Interval: 10.0DEG
 Test Speed: HIGH
 Temperature:25.3DEG
 Operators:LQL
 Test Date:24 July 2023

g Range: 0 - 180DEG
 g Interval: 2.0DEG
 Test System:EVERFINE GO-2000B_V1 SYSTEM V2.0.403
 Humidity:65.0%
 Test Distance:10.365m [K=1.0000]
 Remarks: SMD

UTILIZATION FACTORS TABLE

Test:U:0.4007V I:0A P:0W PF:0.0000 Freq:0Hz Lamp Flux:79.649x1 lm		
NAME: Bat 1W LED rechargeable portable table light	TYPE:	WEIGHT:
SPEC.:	DIM.:	SERIAL No.:
MFR.: CG LIGHTING	SUR.:	Shielding Angle:

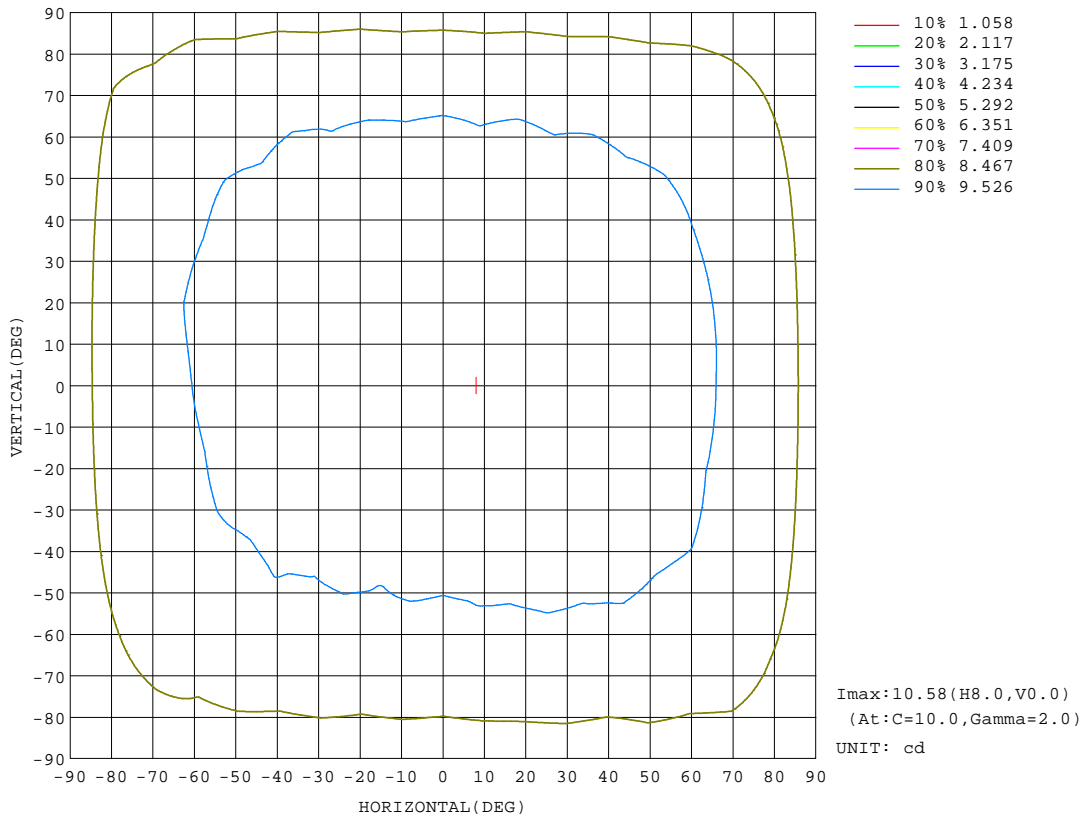
REFLECTANCE										
Ceiling	0.8	0.8	0.8	0.7	0.7	0.7	0.5	0.5	0.5	0
Walls	0.7	0.5	0.3	0.7	0.5	0.3	0.7	0.5	0.3	0
Working plane	0.2	0.2	0.2	0.2	0.2	0.2	0.2	0.2	0.2	0
ROOM INDEX	UTILIZATION FACTORS(PERCENT) k(RI) x RCR = 5									
k = 0.60	42	29	21	41	28	21	39	27	21	14
0.80	51	37	28	49	36	28	46	34	27	18
1.00	58	44	34	56	42	34	52	43	32	23
1.25	65	51	41	62	49	40	57	46	38	28
1.50	70	56	46	67	54	45	61	51	43	31
2.00	77	65	55	74	62	53	67	58	50	37
2.50	82	70	61	79	68	59	71	62	55	41
3.00	86	75	66	82	72	64	75	66	60	44
4.00	92	82	74	87	78	71	79	72	66	49
5.00	95	86	79	90	83	76	82	76	70	53
ROOM INDEX	UF(total)									Direct
According to DIN EN 13032-2 2004			Suspended				SHRNOM = 1.25			

C Range: 0 - 360DEG
 C Interval: 10.0DEG
 Test Speed: HIGH
 Temperature:25.3DEG
 Operators:LQL
 Test Date:24 July 2023

g Range: 0 - 180DEG
 Interval: 2.0DEG
 Test System:EVERFINE GO-2000B_V1 SYSTEM V2.0.403
 Humidity:65.0%
 Test Distance:10.365m [K=1.0000]
 Remarks: SMD

ISOCANDELA DIAGRAM

Test:U:0.4007V I:0A P:0W PF:0.0000 Freq:0Hz Lamp Flux:79.649x1 lm		
NAME: Bat 1W LED rechargeable portable table lightTYPE:		WEIGHT:
SPEC.:	DIM.:	SERIAL No.:
MFR.: CG LIGHTING	SUR.:	Shielding Angle:

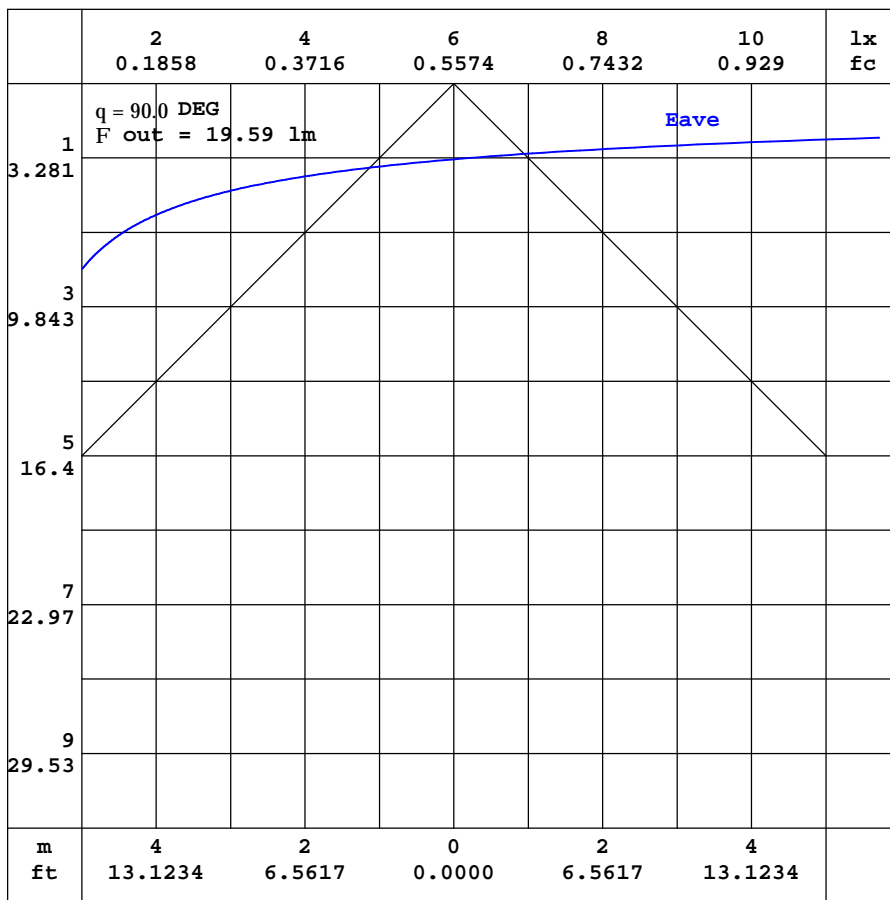


C Range: 0 - 360DEG
 C Interval: 10.0DEG
 Test Speed: HIGH
 Temperature:25.3DEG
 Operators:LQL
 Test Date:24 July 2023

Range: 0 - 180DEG
 Interval: 2.0DEG
 Test System:EVERFINE GO-2000B_V1 SYSTEM V2.0.403
 Humidity:65.0%
 Test Distance:10.365m [K=1.0000]
 Remarks: SMD

AAI CURVES

Test:U:0.4007V I:0A P:0W PF:0.0000 Freq:0Hz Lamp Flux:79.649x1 lm		
NAME: Bat 1W LED rechargeable portable table light	TYPE:	WEIGHT:
SPEC.:	DIM.:	SERIAL No.:
MFR.: CG LIGHTING	SUR.:	Shielding Angle:



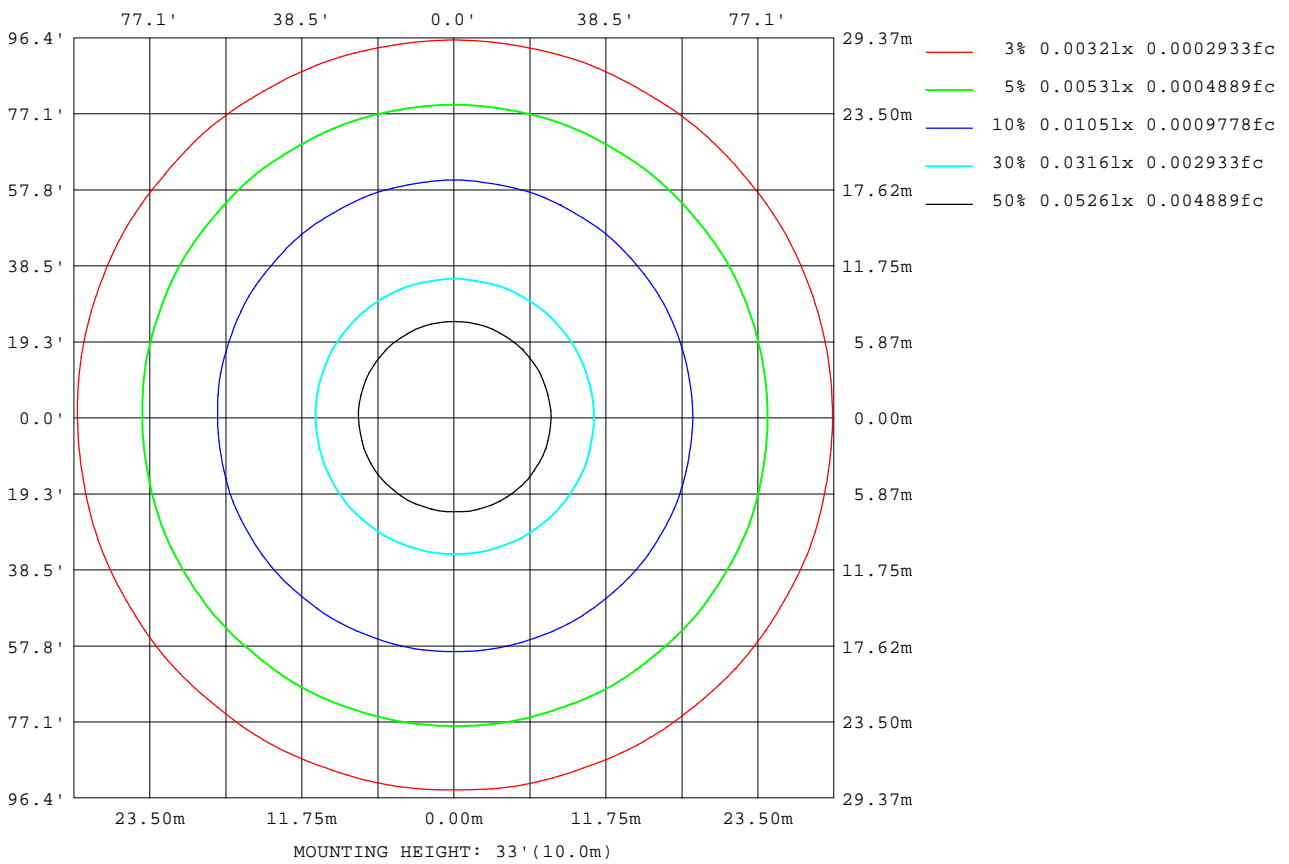
Note: The Curves indicate the illuminated area and the average illumination when the luminaire is at different distance.

C Range: 0 - 360DEG
 C Interval: 10.0DEG
 Test Speed: HIGH
 Temperature: 25.3DEG
 Operators: LQL
 Test Date: 24 July 2023

Range: 0 - 180DEG
 Interval: 2.0DEG
 Test System: EVERFINE GO-2000B_V1 SYSTEM V2.0.403
 Humidity: 65.0%
 Test Distance: 10.365m [K=1.0000]
 Remarks: SMD

ISOLUX DIAGRAM

Test:U:0.4007V I:0A P:0W PF:0.0000 Freq:0Hz Lamp Flux:79.649x1 lm		
NAME: Bat 1W LED rechargeable portable table lightTYPE:		WEIGHT:
SPEC.:	DIM.:	SERIAL No.:
MFR.: CG LIGHTING	SUR.:	Shielding Angle:



C Range: 0 - 360DEG
 C Interval: 10.0DEG
 Test Speed: HIGH
 Temperature:25.3DEG
 Operators:LQL
 Test Date:24 July 2023

Range: 0 - 180DEG
 Interval: 2.0DEG
 Test System:EVERFINE GO-2000B_V1 SYSTEM V2.0.403
 Humidity:65.0%
 Test Distance:10.365m [K=1.0000]
 Remarks: SMD

LED Avg.L Report

Test:U:0.4007V I:0A P:0W PF:0.0000 Freq:0Hz Lamp Flux:79.649x1 lm		
NAME: Bat 1W LED rechargeable portable table light	TYPE:	WEIGHT:
SPEC.:	DIM.:	SERIAL No.:
MFR.: CG LIGHTING	SUR.:	Shielding Angle:

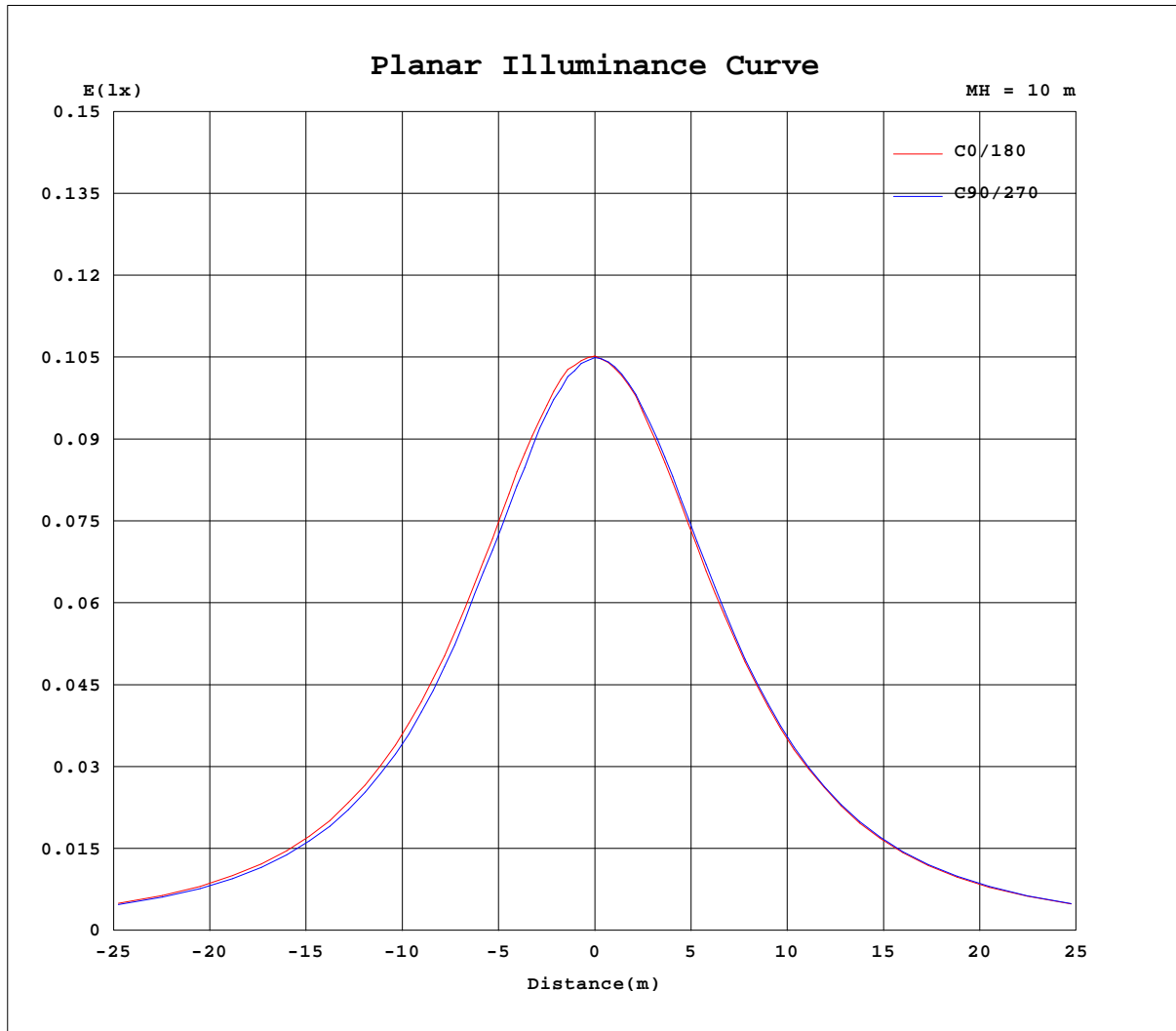
AvgL	cd/m2
L_0~180(65)av	225
L_0~180(75)av	351
L_0~180(85)av	973
L_90~270(65)av	221
L_90~270(75)av	345
L_90~270(85)av	959
L_45(65)av	224
L_45(75)av	349
L_45(85)av	966

Standard: GB/T 29293-2012

C Range: 0 - 360DEG
 C Interval: 10.0DEG
 Test Speed: HIGH
 Temperature:25.3DEG
 Operators:LQL
 Test Date:24 July 2023

g Range: 0 - 180DEG
 g Interval: 2.0DEG
 Test System:EVERFINE GO-2000B_V1 SYSTEM V2.0.403
 Humidity:65.0%
 Test Distance:10.365m [K=1.0000]
 Remarks: SMD

Planar Illuminance Curve



C Range: 0 - 360DEG
 C Interval: 10.0DEG
 Test Speed: HIGH
 Temperature: 25.3DEG
 Operators: LQL
 Test Date: 24 July 2023

Page Range: 0 - 180DEG
 Interval: 2.0DEG
 Test System: EVERFINE GO-2000B_V1 SYSTEM V2.0.403
 Humidity: 65.0%
 Test Distance: 10.365m [K=1.0000]
 Remarks: SMD

LUMINOUS DISTRIBUTION INTENSITY DATA

Test:U:0.4007V I:0A P:0W PF:0.0000 Freq:0Hz Lamp Flux:79.649x1 lm		
NAME: Bat 1W LED rechargeable portable table lightTYPE:		WEIGHT:
SPEC.:		SERIAL No.:
MFR.: CG LIGHTING		Shielding Angle:

Table--1

UNIT: cd

C(DEG) g (DEG)	0	10	20	30	40	50	60	70	80	90	100	110	120	130	140	150	160	170	180
0	10.5	10.5	10.5	10.5	10.5	10.5	10.5	10.5	10.5	10.5	10.5	10.5	10.5	10.5	10.5	10.5	10.5	10.5	10.5
5	10.5	10.5	10.5	10.5	10.5	10.5	10.5	10.5	10.5	10.5	10.5	10.4	10.5	10.5	10.5	10.5	10.5	10.5	10.5
10	10.6	10.5	10.5	10.5	10.5	10.5	10.5	10.4	10.4	10.4	10.4	10.4	10.4	10.4	10.4	10.4	10.4	10.4	10.5
15	10.5	10.5	10.5	10.5	10.5	10.4	10.5	10.4	10.4	10.4	10.4	10.3	10.4	10.3	10.4	10.4	10.4	10.4	10.4
20	10.5	10.5	10.5	10.4	10.4	10.4	10.4	10.3	10.3	10.2	10.3	10.2	10.3	10.2	10.3	10.3	10.3	10.3	10.3
25	10.5	10.5	10.5	10.4	10.4	10.3	10.3	10.2	10.2	10.2	10.2	10.2	10.2	10.2	10.2	10.2	10.2	10.2	10.3
30	10.4	10.4	10.3	10.3	10.3	10.2	10.2	10.1	10.1	10.1	10.1	10.0	10.1	10.1	10.1	10.1	10.1	10.2	10.1
35	10.4	10.3	10.3	10.2	10.2	10.1	10.1	10.0	10.1	9.98	9.97	9.95	10.0	9.99	10.0	10.0	10.1	10.1	10.1
40	10.3	10.2	10.2	10.1	10.1	10.0	10.0	9.88	9.90	9.79	9.86	9.80	9.89	9.86	9.93	9.91	9.97	9.96	10.0
45	10.2	10.1	10.1	10.0	10.0	9.90	9.91	9.80	9.77	9.68	9.77	9.70	9.79	9.76	9.82	9.80	9.89	9.88	9.94
50	10.0	10.00	10.0	9.91	9.91	9.76	9.77	9.64	9.60	9.54	9.59	9.52	9.64	9.62	9.72	9.67	9.78	9.78	9.87
55	9.94	9.88	9.91	9.80	9.81	9.67	9.67	9.53	9.52	9.42	9.48	9.43	9.54	9.52	9.62	9.64	9.70	9.68	9.71
60	9.77	9.75	9.78	9.65	9.65	9.51	9.49	9.40	9.36	9.28	9.34	9.30	9.37	9.36	9.48	9.43	9.52	9.48	9.55
65	9.63	9.56	9.64	9.53	9.52	9.41	9.40	9.26	9.22	9.16	9.18	9.16	9.27	9.24	9.35	9.30	9.39	9.41	9.41
70	9.38	9.37	9.39	9.30	9.30	9.18	9.15	9.04	9.03	8.94	8.99	8.97	9.07	9.05	9.15	9.13	9.19	9.18	9.23
75	9.16	9.21	9.21	9.12	9.10	8.98	8.98	8.83	8.84	8.77	8.83	8.80	8.91	8.89	8.96	8.94	9.08	9.05	9.08
80	8.87	8.81	8.87	8.78	8.72	8.66	8.64	8.54	8.53	8.46	8.51	8.46	8.57	8.54	8.63	8.57	8.75	8.73	8.78
85	8.60	8.56	8.61	8.51	8.49	8.36	8.39	8.33	8.32	8.25	8.26	8.22	8.32	8.31	8.37	8.43	8.48	8.48	8.51
90	8.01	8.19	8.17	8.09	8.11	7.97	7.97	7.90	7.92	7.87	7.86	7.84	7.94	7.90	8.02	7.99	8.09	8.02	8.11
95	7.47	7.93	7.95	7.83	7.46	7.27	7.76	7.72	7.71	7.63	7.67	7.62	7.70	7.67	7.76	7.78	7.86	7.78	7.89
100	5.65	6.18	5.96	5.83	4.75	5.12	6.40	6.41	6.38	6.38	6.34	6.41	6.34	5.72	6.02	6.73	6.54	6.70	6.99
105	4.05	4.50	4.22	4.14	3.04	3.36	4.88	5.37	5.35	5.45	5.37	5.36	4.86	4.07	4.51	5.42	5.13	5.40	5.60
110	2.68	2.60	2.25	2.39	1.65	2.52	3.49	3.67	3.60	3.55	3.57	3.61	3.43	2.47	2.85	3.69	3.20	3.73	4.10
115	2.56	1.99	1.88	2.06	2.12	2.59	3.02	3.03	2.93	2.92	2.93	2.98	2.99	2.44	2.48	2.88	2.45	2.92	3.57
120	3.00	2.63	2.29	2.50	2.52	3.17	3.33	3.11	2.77	2.72	2.78	3.07	3.27	3.07	2.39	2.40	2.01	2.53	3.47
125	3.53	3.03	2.54	2.53	2.30	2.96	3.48	3.33	3.12	3.08	3.11	3.28	3.39	2.87	2.27	2.52	2.25	2.82	3.62
130	4.16	3.48	2.51	2.19	1.85	2.37	2.77	2.95	3.05	3.08	3.05	2.87	2.73	2.28	1.79	2.17	2.31	3.30	4.29
135	4.18	3.34	2.48	2.03	1.69	1.84	2.31	2.37	2.50	2.48	2.47	2.28	2.22	1.92	1.62	1.99	2.42	3.34	4.18
140	3.69	3.11	2.52	1.91	1.43	1.06	1.36	1.64	1.70	1.66	1.65	1.53	1.24	1.02	1.24	1.89	2.47	3.11	3.68
145	3.34	2.92	2.45	1.85	0.93	0.35	1.10	1.10	1.14	1.15	1.08	1.03	0.96	0.34	1.04	1.82	2.43	2.92	3.33
150	2.33	2.03	1.29	0.48	0.21	0.23	0.22	0.25	0.54	0.48	0.47	0.24	0.23	0.19	0.21	0.60	1.48	2.26	2.64
155	0.38	0.25	0.22	0.20	0.20	0.20	0.21	0.22	0.20	0.18	0.22	0.22	0.21	0.19	0.19	0.19	0.22	0.38	0.52
160	0.20	0.19	0.21	0.22	0.19	0.32	0.39	0.25	0.30	0.18	0.36	0.26	0.40	0.25	0.19	0.20	0.20	0.22	0.23
165	1.16	0.98	0.54	0.34	0.39	0.67	0.24	0.25	0.31	0.18	0.39	0.24	0.31	0.69	0.27	0.31	0.51	0.89	1.06
170	0.62	0.50	0.34	0.19	0.20	0.18	0.20	0.25	0.19	0.18	0.19	0.25	0.19	0.18	0.20	0.19	0.40	0.56	0.69
175	0.19	0.19	0.20	0.19	0.20	0.18	0.20	0.19	0.19	0.18	0.19	0.19	0.19	0.18	0.19	0.19	0.19	0.19	0.19
180	0.19	0.19	0.19	0.19	0.19	0.18	0.19	0.19	0.19	0.18	0.19	0.19	0.18	0.18	0.19	0.19	0.19	0.19	0.19

C Range: 0 - 360DEG
 C Interval: 10.0DEG
 Test Speed: HIGH
 Temperature:25.3DEG
 Operators:LQL
 Test Date:24 July 2023

g Range: 0 - 180DEG
 Interval: 2.0DEG
 Test System:EVERFINE GO-2000B_V1 SYSTEM V2.0.403
 Humidity:65.0%
 Test Distance:10.365m [K=1.0000]
 Remarks: SMD

LUMINOUS DISTRIBUTION INTENSITY DATA

Test:U:0.4007V I:0A P:0W PF:0.0000 Freq:0Hz Lamp Flux:79.649x1 lm		
NAME: Bat 1W LED rechargeable portable table lightTYPE:		WEIGHT:
SPEC.:	DIM.:	SERIAL No.:
MFR.: CG LIGHTING	SUR.:	Shielding Angle:

Table--2

UNIT: cd

C(DEG) g (DEG)	190	200	210	220	230	240	250	260	270	280	290	300	310	320	330	340	350		
0	10.5	10.5	10.5	10.5	10.5	10.5	10.5	10.5	10.5	10.5	10.5	10.5	10.5	10.5	10.5	10.5	10.5		
5	10.5	10.5	10.5	10.5	10.5	10.5	10.5	10.5	10.5	10.5	10.5	10.5	10.5	10.5	10.5	10.5	10.5		
10	10.5	10.5	10.5	10.5	10.5	10.5	10.5	10.5	10.5	10.5	10.5	10.5	10.5	10.5	10.5	10.5	10.5		
15	10.4	10.4	10.5	10.4	10.5	10.5	10.5	10.5	10.5	10.5	10.5	10.5	10.5	10.5	10.5	10.5	10.5		
20	10.3	10.4	10.4	10.4	10.4	10.4	10.4	10.4	10.5	10.4	10.5	10.5	10.5	10.5	10.5	10.5	10.5		
25	10.3	10.3	10.4	10.3	10.4	10.4	10.4	10.4	10.4	10.4	10.4	10.4	10.5	10.5	10.5	10.4	10.5		
30	10.2	10.2	10.3	10.2	10.3	10.3	10.3	10.2	10.3	10.3	10.3	10.3	10.4	10.4	10.4	10.3	10.4		
35	10.2	10.1	10.2	10.2	10.2	10.2	10.2	10.2	10.3	10.2	10.3	10.2	10.3	10.3	10.3	10.3	10.3		
40	10.1	10.1	10.1	10.1	10.2	10.1	10.1	10.1	10.1	10.2	10.2	10.1	10.2	10.2	10.2	10.2	10.3		
45	10.0	9.98	10.0	10.0	10.1	10.0	10.1	10.0	10.1	10.0	10.1	10.1	10.1	10.1	10.1	10.1	10.1		
50	9.91	9.83	9.94	9.91	9.97	9.91	9.91	9.88	9.94	9.89	9.97	9.94	10.0	9.98	10.00	10.00	10.0		
55	9.79	9.80	9.86	9.82	9.89	9.79	9.85	9.77	9.83	9.78	9.86	9.87	9.91	9.88	9.94	9.90	9.91		
60	9.62	9.62	9.72	9.67	9.74	9.65	9.71	9.65	9.68	9.64	9.72	9.67	9.75	9.77	9.79	9.77	9.78		
65	9.54	9.53	9.59	9.54	9.62	9.53	9.60	9.53	9.57	9.50	9.59	9.52	9.62	9.58	9.68	9.62	9.64		
70	9.32	9.32	9.40	9.32	9.42	9.35	9.35	9.30	9.33	9.30	9.36	9.30	9.38	9.38	9.45	9.42	9.42		
75	9.13	9.13	9.22	9.16	9.23	9.17	9.22	9.11	9.17	9.15	9.16	9.12	9.19	9.17	9.25	9.20	9.20		
80	8.90	8.84	8.92	8.83	8.88	8.83	8.88	8.82	8.84	8.83	8.84	8.78	8.83	8.80	8.91	8.92	8.93		
85	8.59	8.60	8.65	8.57	8.63	8.57	8.62	8.56	8.66	8.54	8.58	8.54	8.57	8.56	8.63	8.63	8.61		
90	8.14	8.16	8.25	8.19	8.20	8.13	8.19	8.11	8.18	8.07	8.13	8.08	8.15	8.14	8.17	7.87	7.72		
95	7.96	7.90	7.99	7.96	7.94	7.87	7.94	7.86	7.91	7.84	7.88	7.85	7.87	7.86	7.94	7.35	7.24		
100	6.78	6.59	6.74	6.20	5.79	6.34	6.37	6.38	6.29	6.31	6.28	6.21	5.39	5.22	5.89	5.37	5.31		
105	5.41	5.21	5.30	4.57	4.10	4.74	4.95	4.99	4.82	4.89	4.84	4.60	3.64	3.29	4.11	3.64	3.71		
110	3.84	3.24	3.46	2.75	2.17	2.93	2.95	2.85	2.64	2.73	2.82	2.79	2.02	1.50	2.25	1.49	1.63		
115	3.19	2.36	2.65	2.26	2.02	2.26	2.00	1.74	1.48	1.58	1.86	2.12	1.98	1.84	1.79	1.17	1.45		
120	2.84	2.00	2.18	2.09	2.50	2.30	1.65	1.06	0.65	0.95	1.56	2.14	2.44	2.08	2.14	1.69	2.26		
125	3.22	2.35	2.26	1.91	2.27	2.30	1.62	1.00	0.57	0.86	1.47	2.13	2.15	1.87	2.27	2.08	2.86		
130	3.73	2.70	2.17	1.56	1.75	1.65	1.27	0.72	0.41	0.57	1.09	1.48	1.67	1.54	2.14	2.61	3.45		
135	3.79	2.87	2.11	1.55	1.48	1.32	1.00	0.57	0.36	0.48	0.89	1.17	1.41	1.53	2.07	2.87	3.69		
140	3.54	2.81	2.14	1.30	0.71	0.84	0.76	0.49	0.35	0.42	0.69	0.74	0.60	1.57	2.13	2.81	3.50		
145	3.28	2.74	2.15	1.16	0.30	0.61	0.70	0.49	0.40	0.42	0.67	0.54	0.28	1.15	2.16	2.72	3.27		
150	2.38	1.69	0.73	0.21	0.22	0.22	0.25	0.24	0.31	0.22	0.25	0.22	0.22	0.21	0.59	1.48	2.13		
155	0.43	0.22	0.21	0.21	0.21	0.22	0.23	0.23	0.22	0.22	0.23	0.22	0.22	0.21	0.21	0.22	0.32		
160	0.21	0.23	0.21	0.22	0.20	0.48	0.25	0.38	0.21	0.39	0.25	0.44	0.25	0.23	0.21	0.29	0.22		
165	0.83	0.58	0.26	0.42	0.76	0.25	0.25	0.36	0.20	0.37	0.29	0.21	0.74	0.45	0.37	0.72	1.03		
170	0.66	0.36	0.25	0.19	0.20	0.18	0.28	0.17	0.20	0.18	0.29	0.19	0.20	0.19	0.23	0.33	0.57		
175	0.20	0.19	0.20	0.19	0.19	0.18	0.19	0.17	0.19	0.18	0.19	0.19	0.20	0.19	0.20	0.19	0.19		
180	0.19	0.19	0.20	0.19	0.19	0.18	0.17	0.17	0.19	0.18	0.19	0.19	0.19	0.19	0.19	0.19	0.19		

C Range: 0 - 360DEG
 C Interval: 10.0DEG
 Test Speed: HIGH
 Temperature:25.3DEG
 Operators:LQL
 Test Date:24 July 2023

g Range: 0 - 180DEG
 Interval: 2.0DEG
 Test System:EVERFINE GO-2000B_V1 SYSTEM V2.0.403
 Humidity:65.0%
 Test Distance:10.365m [K=1.0000]
 Remarks: SMD