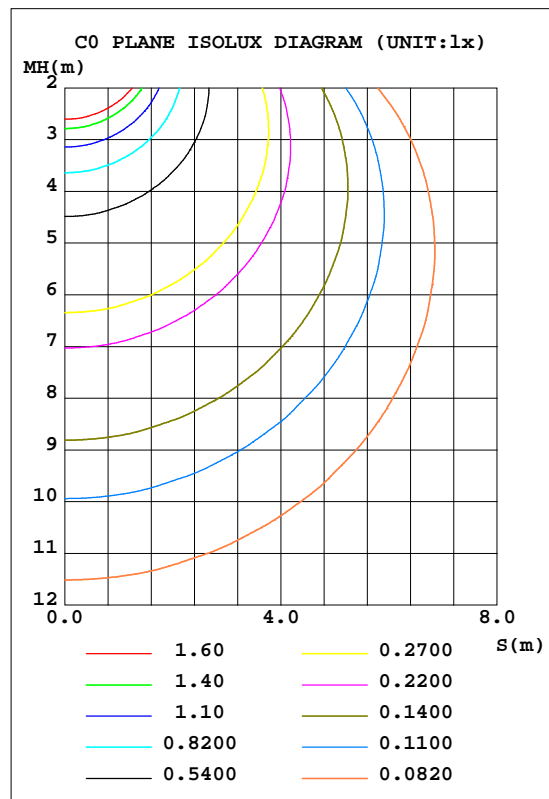
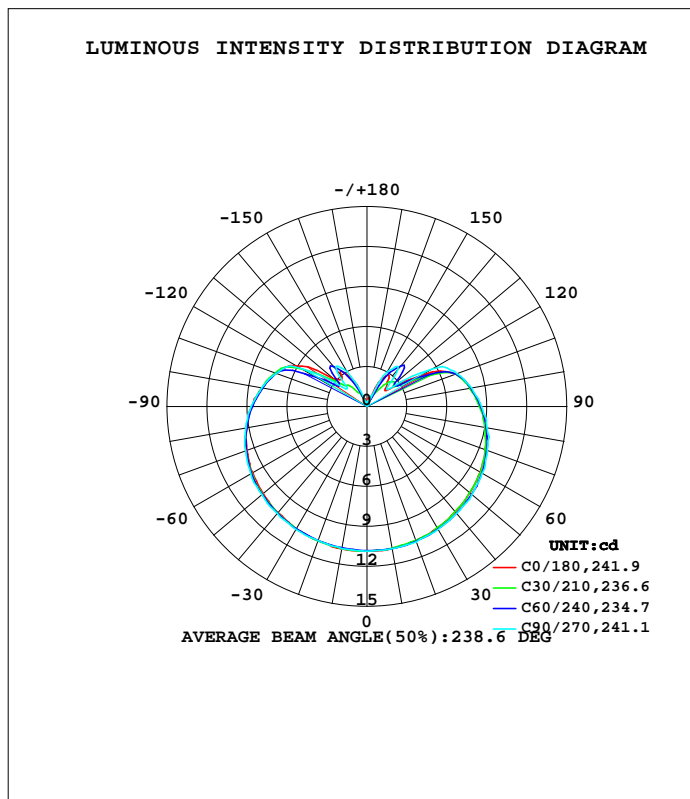


LUMINAIRE PHOTOMETRIC TEST REPORT

Test:U:0.4040V I:0A P:0W PF:0.0000 Freq:0Hz Lamp Flux:92.3224x1 lm		
NAME: Volia 1W LED rechargeable portable table lamp	WPE:	WEIGHT:
SPEC.:	DIM.:	SERIAL No.:
MFR.: CG LIGHTING	SUR.:	Shielding Angle:

DATA OF LAMP		PHOTOMETRIC DATA			
MODEL	1941BD-N7	I <sub>max</sub> (cd)	10.90	S/MH(C0/180)	1.48
NOMINAL POWER(W)		LOR(%)	100.0	S/MH(C90/270)	1.50
RATED VOLTAGE(V)	230.0	TOTAL FLUX(lm)	92.322	h UP, DN(C0-180)	16.3, 33.5
NOMINAL FLUX(lm)	92.3224	CIE CLASS	SEMI-D.	h UP, DN(C180-360)	16.6, 33.6
LAMPS INSIDE	1	h up(%)	32.9	CIBSE SHR NOM	1.75
TEST VOLTAGE(V)	230.0	h down(%)	67.1	CIBSE SHR MAX	1.75



C Range: 0 - 360DEG  
 C Interval: 10.0DEG  
 Test Speed: HIGH  
 Temperature:25.3DEG  
 Operators:LQL  
 Test Date:24 July 2023

Range: 0 - 180DEG  
 Interval: 2.0DEG  
 Test System:EVERFINE GO-2000B\_V1 SYSTEM V2.0.403  
 Humidity:65.0%  
 Test Distance:10.365m [K=1.0000]  
 Remarks: SMD

ZONAL FLUX DIAGRAM

ZONAL FLUX DIAGRAM:

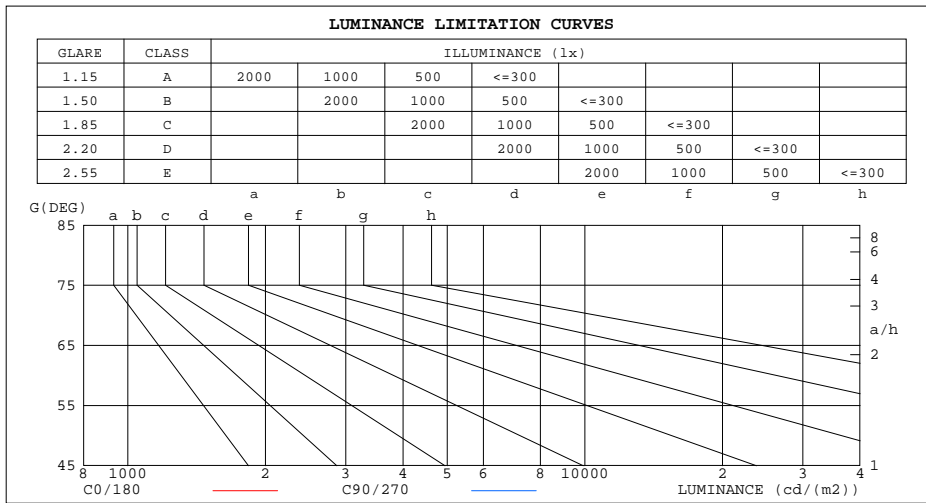
g	C0	C45	C90	C135	C180	C225	C270	C315	g	F zone	F total	%lum,lamp
10	10.83	10.78	10.84	10.80	10.87	10.79	10.82	10.77	0- 10	1.033	1.033	1.12,1.12
20	10.71	10.71	10.82	10.76	10.73	10.72	10.71	10.66	10- 20	3.050	4.082	4.42,4.42
30	10.53	10.56	10.67	10.63	10.61	10.62	10.66	10.54	20- 30	4.934	9.016	9.77,9.77
40	10.32	10.36	10.49	10.48	10.39	10.47	10.49	10.38	30- 40	6.597	15.61	16.9,16.9
50	10.09	10.15	10.29	10.29	10.16	10.26	10.30	10.17	40- 50	7.988	23.60	25.6,25.6
60	9.811	9.866	10.00	10.06	9.907	10.02	10.09	9.911	50- 60	9.056	32.66	35.4,35.4
70	9.446	9.490	9.609	9.669	9.594	9.654	9.699	9.561	60- 70	9.704	42.36	45.9,45.9
80	9.044	9.018	9.162	9.196	9.155	9.170	9.230	9.088	70- 80	9.909	52.27	56.6,56.6
90	8.494	8.471	8.612	8.634	8.649	8.616	8.694	8.530	80- 90	9.668	61.94	67.1,67.1
100	7.876	7.860	8.001	8.009	8.016	8.002	8.024	7.901	90-100	9.026	70.96	76.9,76.9
110	7.102	6.625	7.227	7.261	7.279	7.257	7.258	7.066	100-110	8.056	79.02	85.6,85.6
120	4.687	2.291	5.646	3.645	6.131	3.782	5.728	2.691	110-120	6.133	85.15	92.2,92.2
130	1.892	3.042	1.995	2.975	3.237	2.879	2.086	2.991	120-130	2.929	88.08	95.4,95.4
140	2.381	2.717	3.648	2.684	2.920	2.683	3.564	2.791	130-140	2.081	90.16	97.7,97.7
150	2.487	0.4927	2.946	0.4961	2.537	1.016	3.053	1.005	140-150	1.587	91.75	99.4,99.4
160	0.2020	0.2010	0.1786	0.1861	0.1935	0.1973	0.4196	0.2085	150-160	0.4757	92.23	99.9,99.9
170	0.5664	0.2121	0.4835	0.2195	0.4685	0.2271	0.3716	0.2198	160-170	0.0734	92.30	100,100
180	0.1935	0.1898	0.1638	0.1861	0.1935	0.1935	0.1935	0.1935	170-180	0.0230	92.32	100,100
DEG	LUMINOUS INTENSITY:cd									UNIT:lm		

C Range: 0 - 360DEG  
 C Interval: 10.0DEG  
 Test Speed: HIGH  
 Temperature:25.3DEG  
 Operators:LQL  
 Test Date:24 July 2023

g Range: 0 - 180DEG  
 Interval: 2.0DEG  
 Test System:EVERFINE GO-2000B\_V1 SYSTEM V2.0.403  
 Humidity:65.0%  
 Test Distance:10.365m [K=1.0000]  
 Remarks: SMD

**LUMINANCE LIMITATION CURVES**

Test:U:0.4040V I:0A P:0W PF:0.0000 Freq:0Hz Lamp Flux:92.3224x1 lm		
NAME: Volia 1W LED rechargeable portable table light	WPE:	WEIGHT:
SPEC.:	DIM.:	SERIAL No.:
MFR.: CG LIGHTING	SUR.:	Shielding Angle:



LUMINANCE cd/(m2)		
G(DEG)	C0/180	C90/270
85	1013	1033
80	521	528
75	359	365
70	276	281
65	229	234
60	196	200
55	174	177
50	157	160
45	145	147

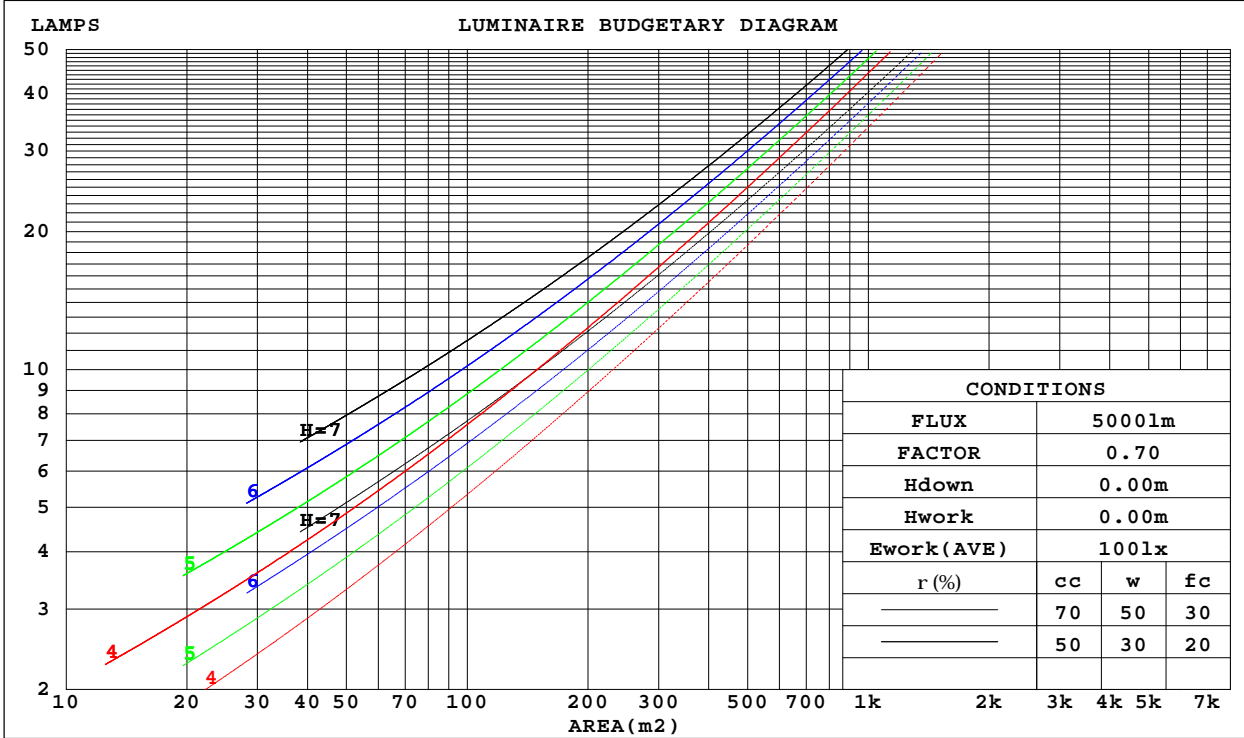
C Range: 0 - 360DEG  
 C Interval: 10.0DEG  
 Test Speed: HIGH  
 Temperature: 25.3DEG  
 Operators: LQL  
 Test Date: 24 July 2023

G Range: 0 - 180DEG  
 G Interval: 2.0DEG  
 Test System: EVERFINE GO-2000B\_V1 SYSTEM V2.0.403  
 Humidity: 65.0%  
 Test Distance: 10.365m [K=1.0000]  
 Remarks: SMD

CU AND LUMINAIRE BUDGETARY ESTIMATE DIAGRAM

Test:U:0.4040V I:0A P:0W PF:0.0000 Freq:0Hz Lamp Flux:92.3224x1 lm		
NAME: Volia 1W LED rechargeable portable table	liwMPE:	WEIGHT:
SPEC.:	DIM.:	SERIAL No.:
MFR.: CG LIGHTING	SUR.:	Shielding Angle:

r <sub>cc</sub>	80%			70%			50%			30%			10%			0
r <sub>w</sub>	50%	30%	10%	50%	30%	10%	50%	30%	10%	50%	30%	10%	50%	30%	10%	0
r <sub>fc</sub>	20%			20%			20%			20%			20%			0
RCR	RCR:Room Cavity Ratio						Coefficients of Utilization(CU)									
0.0	1.11	1.11	1.11	1.05	1.05	1.05	.93	.93	.93	.82	.82	.82	.72	.72	.72	.67
1.0	.90	.84	.79	.84	.79	.74	.74	.70	.66	.64	.61	.58	.55	.53	.51	.46
2.0	.76	.67	.60	.71	.63	.57	.62	.56	.51	.54	.49	.45	.46	.42	.39	.35
3.0	.65	.56	.48	.61	.52	.46	.53	.46	.41	.46	.40	.36	.39	.35	.31	.27
4.0	.57	.47	.40	.53	.44	.37	.46	.39	.33	.40	.34	.29	.34	.30	.26	.22
5.0	.50	.40	.33	.47	.38	.31	.41	.34	.28	.36	.30	.25	.30	.26	.22	.18
6.0	.45	.35	.28	.42	.33	.27	.37	.29	.24	.32	.26	.21	.27	.22	.18	.16
7.0	.40	.31	.24	.38	.29	.23	.33	.26	.21	.29	.23	.18	.25	.20	.16	.13
8.0	.36	.27	.21	.34	.26	.20	.30	.23	.18	.26	.20	.16	.23	.18	.14	.12
9.0	.33	.25	.19	.31	.23	.18	.27	.21	.16	.24	.18	.14	.21	.16	.13	.10
10.0	.30	.22	.17	.29	.21	.16	.25	.19	.14	.22	.17	.13	.19	.15	.11	.09



C Range: 0 - 360DEG  
 C Interval: 10.0DEG  
 Test Speed: HIGH  
 Temperature:25.3DEG  
 Operators:LQL  
 Test Date:24 July 2023

Range: 0 - 180DEG  
 Interval: 2.0DEG  
 Test System:EVERFINE GO-2000B\_V1 SYSTEM V2.0.403  
 Humidity:65.0%  
 Test Distance:10.365m [K=1.0000]  
 Remarks: SMD

WEC AND CCEC

Test:U:0.4040V I:0A P:0W PF:0.0000 Freq:0Hz Lamp Flux:92.3224x1 lm		
NAME: Volia 1W LED rechargeable portable table light	WPE:	WEIGHT:
SPEC.:	DIM.:	SERIAL No.:
MFR.: CG LIGHTING	SUR.:	Shielding Angle:

rcc	80%			70%			50%			30%			10%			0
rw	50%	30%	10%	50%	30%	10%	50%	30%	10%	50%	30%	10%	50%	30%	10%	0
rfc	20%			20%			20%			20%			20%			0
RCR	RCR:Room Cavity Ratio						Wall Exitance Coefficients(WEC)									
0.0																
1.0	.427	.243	.077	.409	.233	.074	.377	.216	.069	.347	.200	.064	.319	.185	.060	
2.0	.356	.195	.060	.340	.187	.058	.311	.173	.054	.283	.159	.050	.258	.146	.046	
3.0	.310	.165	.049	.296	.158	.048	.269	.146	.044	.244	.134	.041	.221	.122	.038	
4.0	.275	.143	.042	.262	.137	.041	.238	.126	.038	.215	.115	.035	.194	.105	.032	
5.0	.248	.126	.037	.236	.121	.035	.214	.111	.033	.193	.102	.030	.173	.093	.028	
6.0	.226	.113	.032	.215	.109	.031	.194	.100	.029	.175	.091	.027	.157	.083	.025	
7.0	.207	.102	.029	.197	.098	.028	.178	.090	.026	.160	.082	.024	.144	.075	.022	
8.0	.191	.094	.026	.182	.090	.025	.165	.082	.023	.148	.075	.022	.133	.068	.020	
9.0	.178	.086	.024	.169	.082	.023	.153	.076	.021	.138	.069	.020	.123	.063	.018	
10.0	.166	.080	.022	.158	.076	.021	.143	.070	.020	.128	.064	.018	.115	.058	.017	

rcc	80%			70%			50%			30%			10%			0
rw	50%	30%	10%	50%	30%	10%	50%	30%	10%	50%	30%	10%	50%	30%	10%	0
rfc	20%			20%			20%			20%			20%			0
RCR	RCR:Room Cavity Ratio						Ceiling Cavity Exitance Coefficients(CCEC)									
0.0	.441	.441	.441	.377	.377	.377	.257	.257	.257	.148	.148	.148	.047	.047	.047	
1.0	.441	.408	.378	.378	.350	.325	.258	.241	.225	.149	.139	.131	.048	.045	.042	
2.0	.435	.386	.345	.373	.332	.298	.256	.230	.208	.147	.134	.122	.047	.043	.040	
3.0	.428	.370	.325	.367	.320	.281	.252	.222	.197	.146	.130	.116	.047	.042	.038	
4.0	.420	.359	.311	.361	.310	.271	.248	.216	.191	.143	.126	.113	.046	.041	.037	
5.0	.413	.349	.302	.354	.302	.263	.244	.211	.186	.141	.124	.110	.046	.040	.036	
6.0	.405	.342	.296	.348	.296	.258	.240	.207	.182	.139	.122	.108	.045	.040	.036	
7.0	.398	.335	.291	.342	.291	.254	.236	.204	.180	.137	.120	.107	.044	.039	.035	
8.0	.391	.330	.288	.337	.286	.251	.233	.201	.178	.136	.119	.106	.044	.039	.035	
9.0	.385	.325	.285	.332	.282	.249	.230	.198	.177	.134	.117	.105	.043	.038	.035	
10.0	.379	.321	.283	.327	.279	.247	.227	.196	.175	.132	.116	.105	.043	.038	.035	

C Range: 0 - 360DEG  
 C Interval: 10.0DEG  
 Test Speed: HIGH  
 Temperature:25.3DEG  
 Operators:LQL  
 Test Date:24 July 2023

g Range: 0 - 180DEG  
 g Interval: 2.0DEG  
 Test System:EVERFINE GO-2000B\_V1 SYSTEM V2.0.403  
 Humidity:65.0%  
 Test Distance:10.365m [K=1.0000]  
 Remarks: SMD

UGR(Unified Glare Rating) Table

Test:U:0.4040V I:0A P:0W PF:0.0000 Freq:0Hz Lamp Flux:92.3224x1 lm										
NAME: Volia 1W LED rechargeable portable table light					WPE:			WEIGHT:		
SPEC.:					DIM.:			SERIAL No.:		
MFR.: CG LIGHTING					SUR.:			Shielding Angle:		
ceiling/cavity	0.7	0.7	0.5	0.5	0.3	0.7	0.7	0.5	0.5	0.3
walls	0.5	0.3	0.5	0.3	0.3	0.5	0.3	0.5	0.3	0.3
working plane	0.2	0.2	0.2	0.2	0.2	0.2	0.2	0.2	0.2	0.2
Room dimensions	Viewed crosswise					Viewed endwise				
x = 2H y = 2H	13.1	14.3	13.7	15.0	15.9	13.2	14.4	13.8	15.1	16.0
3H	16.1	17.2	16.8	18.0	18.8	16.2	17.3	16.9	18.1	19.0
4H	17.7	18.8	18.5	19.6	20.5	17.9	19.0	18.6	19.7	20.6
6H	19.6	20.7	20.4	21.4	22.4	19.8	20.8	20.5	21.6	22.5
8H	20.7	21.7	21.5	22.5	23.4	20.8	21.8	21.6	22.6	23.6
12H	21.9	22.9	22.7	23.7	24.6	22.0	23.0	22.8	23.8	24.8
4H 2H	14.0	15.1	14.7	15.9	16.8	14.1	15.2	14.8	15.9	16.9
3H	17.2	18.1	17.9	18.9	19.9	17.3	18.2	18.0	19.0	20.0
4H	19.0	19.9	19.8	20.7	21.7	19.1	20.0	19.9	20.8	21.8
6H	21.0	21.8	21.9	22.7	23.7	21.2	22.0	22.0	22.8	23.8
8H	22.2	22.9	23.0	23.8	24.8	22.3	23.1	23.1	23.9	24.9
12H	23.5	24.2	24.3	25.1	26.1	23.6	24.3	24.5	25.2	26.2
8H 4H	19.7	20.4	20.5	21.3	22.3	19.8	20.5	20.6	21.4	22.4
6H	22.0	22.6	22.9	23.5	24.6	22.1	22.7	22.9	23.6	24.7
8H	23.3	23.9	24.2	24.8	25.9	23.4	24.0	24.3	24.9	26.0
12H	24.9	25.4	25.8	26.3	27.4	25.0	25.5	25.8	26.4	27.5
12H 4H	19.9	20.6	20.7	21.4	22.5	19.9	20.6	20.8	21.5	22.5
6H	22.3	22.9	23.2	23.8	24.9	22.4	23.0	23.3	23.8	24.9
8H	23.8	24.3	24.6	25.2	26.3	23.8	24.4	24.7	25.2	26.3
Variations with the observer position at spacings:										
S = 1.0H	+ 0.1 / - 0.1					+ 0.1 / - 0.1				
1.5H	+ 0.2 / - 0.3					+ 0.2 / - 0.3				
2.0H	+ 0.3 / - 0.4					+ 0.3 / - 0.4				

CIE Pub.117, 92.32 lm Total Lamp Luminous Flux Correct (8log(F/F0) = -8.3)

C Range: 0 - 360DEG  
 C Interval: 10.0DEG  
 Test Speed: HIGH  
 Temperature:25.3DEG  
 Operators:LQL  
 Test Date:24 July 2023

g Range: 0 - 180DEG  
 g Interval: 2.0DEG  
 Test System:EVERFINE GO-2000B\_V1 SYSTEM V2.0.403  
 Humidity:65.0%  
 Test Distance:10.365m [K=1.0000]  
 Remarks: SMD

UTILIZATION FACTORS TABLE

Test:U:0.4040V I:0A P:0W PF:0.0000 Freq:0Hz Lamp Flux:92.3224x1 lm		
NAME: Volia 1W LED rechargeable portable table lamp	WPE:	WEIGHT:
SPEC.:	DIM.:	SERIAL No.:
MFR.: CG LIGHTING	SUR.:	Shielding Angle:

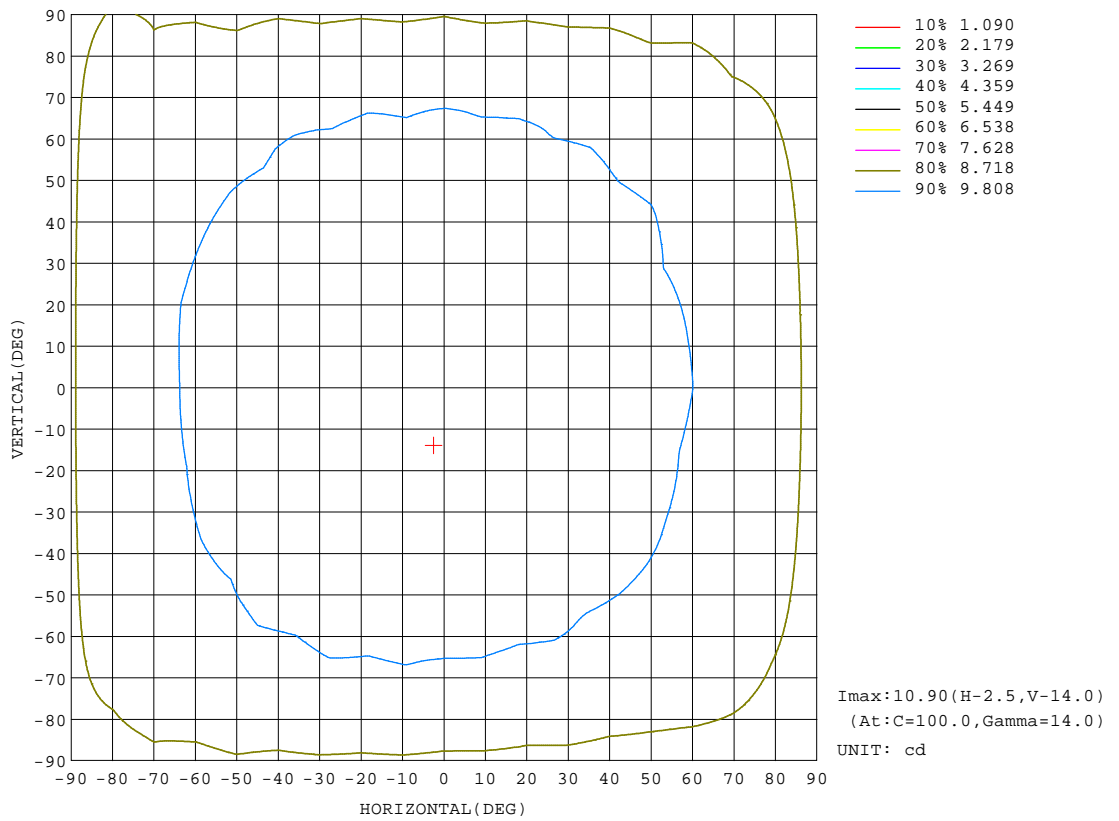
REFLECTANCE										
Ceiling	0.8	0.8	0.8	0.7	0.7	0.7	0.5	0.5	0.5	0
Walls	0.7	0.5	0.3	0.7	0.5	0.3	0.7	0.5	0.3	0
Working plane	0.2	0.2	0.2	0.2	0.2	0.2	0.2	0.2	0.2	0
ROOM INDEX	UTILIZATION FACTORS(PERCENT) k(RI) x RCR = 5									
k = 0.60	40	27	20	39	27	20	37	26	19	12
0.80	49	35	26	47	34	26	43	32	25	16
1.00	56	42	33	54	41	32	49	40	30	21
1.25	63	49	39	60	47	38	54	44	36	25
1.50	68	54	45	65	52	43	58	48	40	28
2.00	76	63	54	72	60	52	64	55	48	33
2.50	81	69	60	76	66	57	68	60	53	37
3.00	85	74	65	80	70	62	71	63	57	40
4.00	90	81	73	85	77	69	75	69	63	44
5.00	94	85	78	88	81	74	78	72	67	47
ROOM INDEX	UF(total)									Direct
According to DIN EN 13032-2 2004			Suspended				SHRNOM = 1.25			

C Range: 0 - 360DEG  
 C Interval: 10.0DEG  
 Test Speed: HIGH  
 Temperature:25.3DEG  
 Operators:LQL  
 Test Date:24 July 2023

g Range: 0 - 180DEG  
 Interval: 2.0DEG  
 Test System:EVERFINE GO-2000B\_V1 SYSTEM V2.0.403  
 Humidity:65.0%  
 Test Distance:10.365m [K=1.0000]  
 Remarks: SMD

ISOCANDELA DIAGRAM

Test:U:0.4040V I:0A P:0W PF:0.0000 Freq:0Hz Lamp Flux:92.3224x1 lm		
NAME: Volia 1W LED rechargeable portable table light	WPE:	WEIGHT:
SPEC.:	DIM.:	SERIAL No.:
MFR.: CG LIGHTING	SUR.:	Shielding Angle:



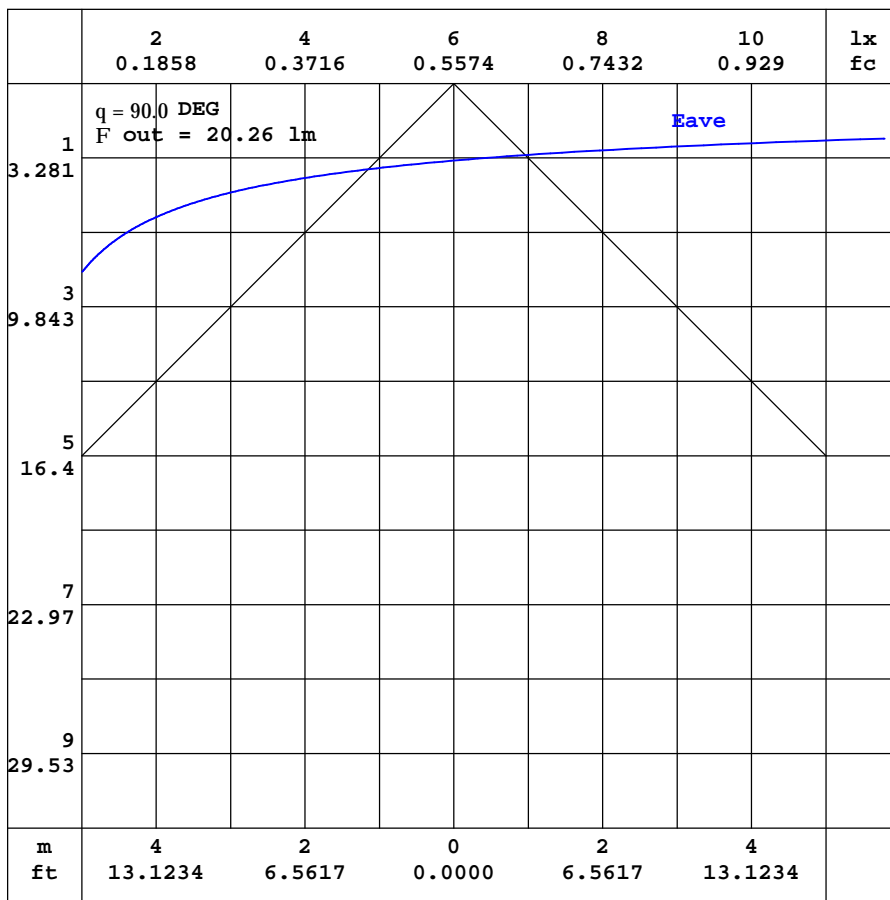
C Range: 0 - 360DEG  
 C Interval: 10.0DEG  
 Test Speed: HIGH  
 Temperature:25.3DEG  
 Operators:LQL  
 Test Date:24 July 2023

Range: 0 - 180DEG  
 Interval: 2.0DEG  
 Test System:EVERFINE GO-2000B\_V1 SYSTEM V2.0.403  
 Humidity:65.0%  
 Test Distance:10.365m [K=1.0000]  
 Remarks: SMD



AAI CURVES

Test:U:0.4040V I:0A P:0W PF:0.0000 Freq:0Hz Lamp Flux:92.3224x1 lm		
NAME: Volia 1W LED rechargeable portable table	light:	WEIGHT:
SPEC.:	DIM.:	SERIAL No.:
MFR.: CG LIGHTING	SUR.:	Shielding Angle:



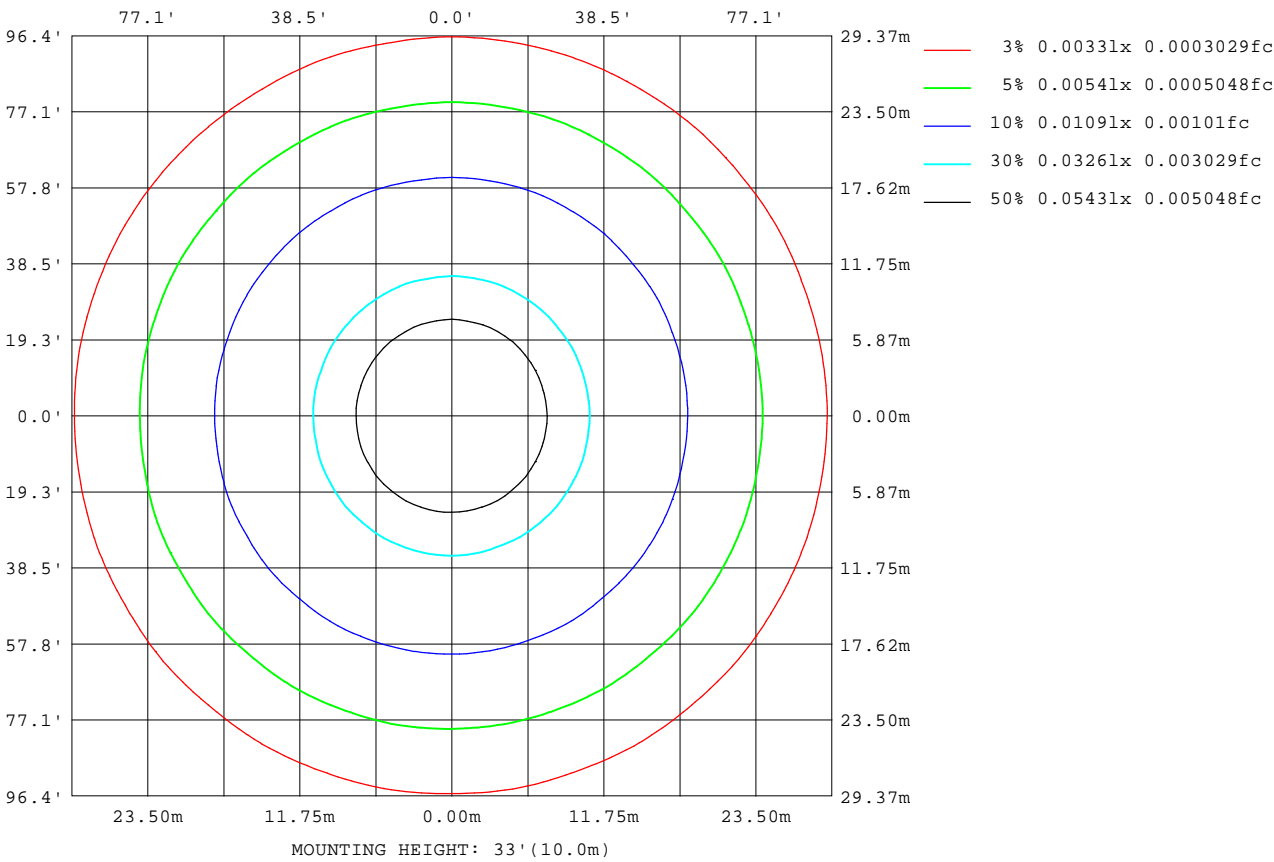
Note: The Curves indicate the illuminated area and the average illumination when the luminaire is at different distance.

C Range: 0 - 360DEG  
 C Interval: 10.0DEG  
 Test Speed: HIGH  
 Temperature: 25.3DEG  
 Operators: LQL  
 Test Date: 24 July 2023

Range: 0 - 180DEG  
 Interval: 2.0DEG  
 Test System: EVERFINE GO-2000B\_V1 SYSTEM V2.0.403  
 Humidity: 65.0%  
 Test Distance: 10.365m [K=1.0000]  
 Remarks: SMD

**ISOLUX DIAGRAM**

Test:U:0.4040V I:0A P:0W PF:0.0000 Freq:0Hz Lamp Flux:92.3224x1 lm		
NAME: Volia 1W LED rechargeable portable table light	TYPE:	WEIGHT:
SPEC.:	DIM.:	SERIAL No.:
MFR.: CG LIGHTING	SUR.:	Shielding Angle:



C Range: 0 - 360DEG  
 C Interval: 10.0DEG  
 Test Speed: HIGH  
 Temperature: 25.3DEG  
 Operators: LQL  
 Test Date: 24 July 2023

Page Range: 0 - 180DEG  
 Interval: 2.0DEG  
 Test System: EVERFINE GO-2000B\_V1 SYSTEM V2.0.403  
 Humidity: 65.0%  
 Test Distance: 10.365m [K=1.0000]  
 Remarks: SMD

LED Avg.L Report

Test:U:0.4040V I:0A P:0W PF:0.0000 Freq:0Hz Lamp Flux:92.3224x1 lm		
NAME: Volia 1W LED rechargeable portable table	li	WEIGHT:
SPEC.:	DIM.:	SERIAL No.:
MFR.: CG LIGHTING	SUR.:	Shielding Angle:

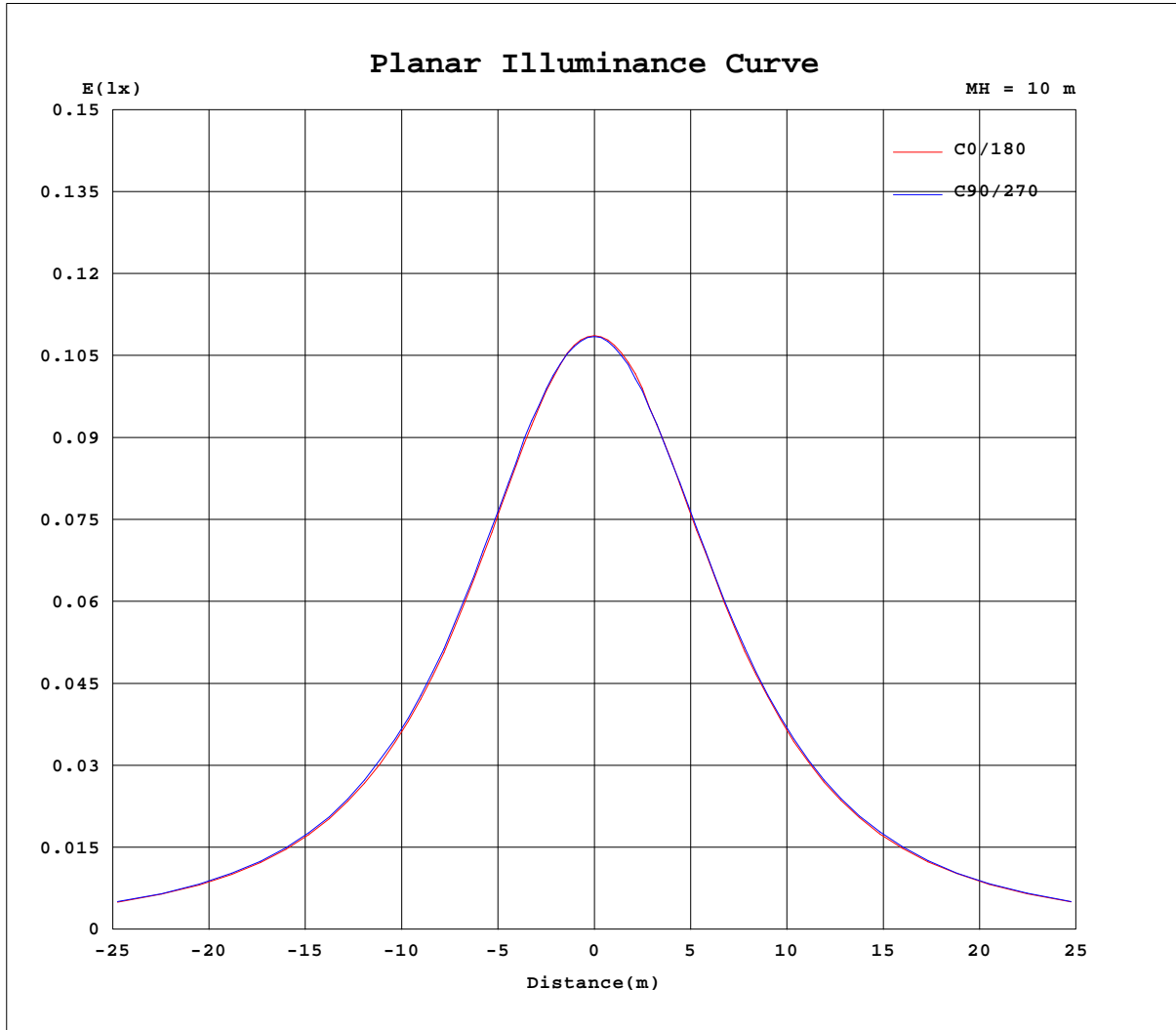
AvgL	cd/m2
L_0~180(65)av	230
L_0~180(75)av	361
L_0~180(85)av	1018
L_90~270(65)av	234
L_90~270(75)av	366
L_90~270(85)av	1027
L_45(65)av	231
L_45(75)av	362
L_45(85)av	1014

Standard: GB/T 29293-2012

C Range: 0 - 360DEG  
 C Interval: 10.0DEG  
 Test Speed: HIGH  
 Temperature:25.3DEG  
 Operators:LQL  
 Test Date:24 July 2023

g Range: 0 - 180DEG  
 Interval: 2.0DEG  
 Test System:EVERFINE GO-2000B\_V1 SYSTEM V2.0.403  
 Humidity:65.0%  
 Test Distance:10.365m [K=1.0000]  
 Remarks: SMD

Planar Illuminance Curve



C Range: 0 - 360DEG  
 C Interval: 10.0DEG  
 Test Speed: HIGH  
 Temperature: 25.3DEG  
 Operators: LQL  
 Test Date: 24 July 2023

Page Range: 0 - 180DEG  
 Interval: 2.0DEG  
 Test System: EVERFINE GO-2000B\_V1 SYSTEM V2.0.403  
 Humidity: 65.0%  
 Test Distance: 10.365m [K=1.0000]  
 Remarks: SMD

LUMINOUS DISTRIBUTION INTENSITY DATA

Test:U:0.4040V I:0A P:0W PF:0.0000 Freq:0Hz Lamp Flux:92.3224x1 lm		
NAME: Volia 1W LED rechargeable portable table	light type:	WEIGHT:
SPEC.:	DIM.:	SERIAL No.:
MFR.: CG LIGHTING	SUR.:	Shielding Angle:

Table--1

UNIT: cd

C(DEG) g (DEG)	0	10	20	30	40	50	60	70	80	90	100	110	120	130	140	150	160	170	180
0	10.9	10.9	10.9	10.9	10.8	10.8	10.8	10.8	10.8	10.9	10.8	10.8	10.8	10.8	10.8	10.8	10.8	10.8	10.9
5	10.9	10.9	10.8	10.8	10.8	10.8	10.8	10.8	10.8	10.8	10.9	10.8	10.8	10.8	10.8	10.8	10.8	10.8	10.9
10	10.8	10.8	10.8	10.8	10.8	10.8	10.8	10.8	10.8	10.8	10.8	10.8	10.8	10.8	10.8	10.8	10.8	10.8	10.9
15	10.8	10.7	10.8	10.7	10.8	10.8	10.8	10.7	10.8	10.8	10.9	10.8	10.7	10.8	10.8	10.7	10.8	10.7	10.8
20	10.7	10.6	10.7	10.7	10.7	10.7	10.8	10.7	10.8	10.8	10.8	10.8	10.8	10.7	10.8	10.7	10.7	10.7	10.7
25	10.6	10.6	10.6	10.6	10.7	10.6	10.7	10.7	10.7	10.7	10.8	10.7	10.8	10.7	10.7	10.7	10.7	10.7	10.7
30	10.5	10.5	10.5	10.5	10.5	10.6	10.6	10.6	10.7	10.7	10.7	10.7	10.7	10.6	10.7	10.6	10.6	10.6	10.6
35	10.5	10.4	10.5	10.5	10.5	10.5	10.6	10.5	10.6	10.6	10.6	10.6	10.6	10.6	10.5	10.6	10.5	10.5	10.5
40	10.3	10.3	10.3	10.3	10.4	10.3	10.5	10.4	10.5	10.5	10.5	10.5	10.5	10.5	10.5	10.4	10.4	10.4	10.4
45	10.2	10.2	10.2	10.2	10.3	10.3	10.4	10.3	10.4	10.4	10.4	10.4	10.4	10.4	10.4	10.3	10.4	10.3	10.4
50	10.1	10.0	10.1	10.1	10.2	10.1	10.2	10.2	10.3	10.3	10.3	10.3	10.4	10.3	10.3	10.2	10.3	10.2	10.2
55	9.98	9.95	9.97	10.00	10.1	10.1	10.2	10.1	10.2	10.1	10.3	10.2	10.3	10.2	10.2	10.1	10.2	10.1	10.1
60	9.81	9.75	9.79	9.86	9.86	9.87	9.96	9.92	10.0	10.0	10.1	10.0	10.1	10.0	10.1	9.98	10.00	9.91	9.91
65	9.68	9.67	9.68	9.66	9.71	9.74	9.82	9.79	9.86	9.89	9.94	9.88	9.94	9.90	9.94	9.82	9.87	9.80	9.80
70	9.45	9.41	9.46	9.44	9.51	9.48	9.57	9.56	9.65	9.61	9.71	9.68	9.71	9.63	9.71	9.60	9.65	9.55	9.59
75	9.28	9.24	9.30	9.28	9.30	9.29	9.40	9.36	9.46	9.45	9.53	9.50	9.57	9.50	9.53	9.45	9.45	9.39	9.43
80	9.04	8.95	9.03	8.98	9.06	8.98	9.09	9.07	9.16	9.16	9.25	9.16	9.22	9.18	9.22	9.16	9.21	9.14	9.15
85	8.83	8.80	8.79	8.78	8.82	8.80	8.89	8.86	8.94	9.01	9.00	9.02	9.06	8.94	9.01	8.95	9.00	8.92	8.98
90	8.49	8.45	8.46	8.45	8.47	8.47	8.53	8.51	8.58	8.61	8.64	8.63	8.62	8.60	8.67	8.60	8.67	8.59	8.65
95	8.26	8.22	8.25	8.22	8.26	8.19	8.31	8.27	8.34	8.38	8.42	8.40	8.43	8.34	8.43	8.37	8.40	8.36	8.48
100	7.88	7.85	7.88	7.84	7.88	7.84	7.93	7.88	8.02	8.00	8.01	8.01	8.05	7.97	8.05	7.98	8.03	7.96	8.02
105	7.63	7.59	7.64	7.57	7.61	7.61	7.67	7.63	7.68	7.67	7.72	7.70	7.82	7.73	7.77	7.73	7.79	7.71	7.73
110	7.10	7.14	7.21	7.11	6.68	6.57	7.12	7.20	7.25	7.23	7.25	7.31	7.37	7.25	7.27	7.31	7.35	7.28	7.28
115	6.46	6.70	6.62	6.28	4.81	5.06	6.48	6.88	6.92	6.83	6.95	6.92	6.73	6.01	6.25	7.00	7.04	6.95	6.91
120	4.69	4.63	4.11	3.97	2.20	2.38	4.34	5.04	5.42	5.65	5.42	5.05	4.31	3.16	4.13	5.67	5.79	5.92	6.13
125	3.40	3.08	2.65	2.89	2.03	2.08	2.83	3.52	3.90	4.12	3.88	3.52	2.80	2.08	3.22	4.31	4.38	4.76	5.33
130	1.89	1.56	1.66	2.69	2.95	3.14	2.75	2.31	2.11	1.99	2.10	2.29	2.72	3.04	2.91	2.86	2.21	2.54	3.24
135	1.91	1.90	1.81	2.71	2.86	3.80	3.73	2.93	2.36	2.19	2.33	2.92	3.71	3.72	2.73	2.34	1.35	1.89	2.93
140	2.38	2.30	1.92	2.25	2.29	3.15	4.01	4.03	3.76	3.65	3.72	4.03	3.97	3.14	2.23	2.02	1.53	2.11	2.92
145	2.86	2.63	1.79	1.74	1.07	2.71	3.41	3.59	3.72	3.71	3.72	3.57	3.39	2.68	1.35	1.59	1.61	2.50	3.32
150	2.49	2.14	1.67	1.09	0.56	0.43	1.81	2.62	2.95	2.95	2.96	2.58	1.91	0.37	0.62	1.09	1.73	2.17	2.54
155	2.00	1.80	1.48	0.60	0.21	0.32	0.46	0.42	1.43	1.89	1.43	0.42	0.37	0.36	0.21	0.72	1.49	1.77	2.00
160	0.20	0.22	0.24	0.19	0.19	0.21	0.20	0.19	0.20	0.18	0.22	0.18	0.19	0.18	0.19	0.19	0.22	0.22	0.19
165	0.20	0.22	0.26	0.27	0.19	0.22	0.22	0.21	0.19	0.19	0.19	0.21	0.24	0.21	0.19	0.24	0.26	0.22	0.20
170	0.57	0.47	0.38	0.27	0.25	0.18	0.25	0.34	0.40	0.48	0.39	0.38	0.26	0.19	0.25	0.27	0.35	0.44	0.47
175	0.21	0.19	0.20	0.16	0.20	0.18	0.20	0.19	0.21	0.16	0.20	0.19	0.20	0.18	0.20	0.16	0.20	0.18	0.19
180	0.19	0.19	0.19	0.16	0.20	0.18	0.19	0.19	0.18	0.16	0.19	0.19	0.19	0.18	0.19	0.17	0.19	0.18	0.19

C Range: 0 - 360DEG  
 C Interval: 10.0DEG  
 Test Speed: HIGH  
 Temperature:25.3DEG  
 Operators:LQL  
 Test Date:24 July 2023

g Range: 0 - 180DEG  
 Interval: 2.0DEG  
 Test System:EVERFINE GO-2000B\_V1 SYSTEM V2.0.403  
 Humidity:65.0%  
 Test Distance:10.365m [K=1.0000]  
 Remarks: SMD

LUMINOUS DISTRIBUTION INTENSITY DATA

Test:U:0.4040V I:0A P:0W PF:0.0000 Freq:0Hz Lamp Flux:92.3224x1 lm		
NAME: Volia 1W LED rechargeable portable table	light:MPE:	WEIGHT:
SPEC.:	DIM.:	SERIAL No.:
MFR.: CG LIGHTING	SUR.:	Shielding Angle:

Table--2

UNIT: cd

C(DEG) g (DEG)	190	200	210	220	230	240	250	260	270	280	290	300	310	320	330	340	350		
0	10.9	10.9	10.9	10.8	10.8	10.8	10.8	10.8	10.9	10.8	10.8	10.8	10.8	10.8	10.8	10.8	10.8		
5	10.9	10.8	10.9	10.8	10.8	10.8	10.8	10.8	10.8	10.8	10.8	10.8	10.8	10.8	10.8	10.8	10.8		
10	10.8	10.8	10.8	10.8	10.8	10.8	10.8	10.7	10.8	10.8	10.8	10.8	10.8	10.7	10.8	10.8	10.8		
15	10.8	10.8	10.8	10.8	10.8	10.7	10.8	10.7	10.8	10.7	10.8	10.7	10.8	10.7	10.7	10.7	10.7		
20	10.8	10.7	10.7	10.7	10.7	10.7	10.8	10.7	10.7	10.7	10.7	10.7	10.7	10.6	10.7	10.6	10.6		
25	10.7	10.7	10.7	10.6	10.7	10.7	10.7	10.7	10.7	10.7	10.7	10.6	10.7	10.6	10.6	10.6	10.6		
30	10.6	10.6	10.6	10.6	10.6	10.6	10.7	10.6	10.7	10.6	10.6	10.6	10.6	10.5	10.5	10.5	10.5		
35	10.6	10.6	10.5	10.6	10.5	10.5	10.6	10.6	10.6	10.5	10.6	10.5	10.5	10.4	10.5	10.4	10.4		
40	10.4	10.4	10.4	10.4	10.5	10.4	10.5	10.5	10.5	10.5	10.5	10.4	10.4	10.3	10.3	10.2	10.3		
45	10.4	10.3	10.3	10.3	10.4	10.4	10.4	10.4	10.5	10.4	10.4	10.3	10.3	10.2	10.3	10.2	10.2		
50	10.2	10.2	10.2	10.2	10.3	10.2	10.4	10.3	10.3	10.3	10.3	10.2	10.2	10.1	10.1	10.0	10.1		
55	10.1	10.1	10.2	10.1	10.2	10.2	10.3	10.2	10.2	10.2	10.2	10.1	10.1	10.0	10.1	9.95	9.94		
60	9.92	9.91	10.00	9.97	10.1	10.0	10.1	10.00	10.1	10.0	10.0	9.96	9.95	9.87	9.88	9.77	9.79		
65	9.84	9.88	9.83	9.81	9.89	9.86	9.94	9.85	9.95	9.88	9.92	9.79	9.82	9.71	9.76	9.64	9.68		
70	9.68	9.68	9.67	9.66	9.65	9.64	9.72	9.64	9.70	9.68	9.68	9.59	9.62	9.50	9.52	9.42	9.45		
75	9.47	9.46	9.51	9.43	9.43	9.45	9.54	9.49	9.54	9.50	9.49	9.41	9.42	9.33	9.36	9.23	9.23		
80	9.20	9.18	9.22	9.13	9.21	9.16	9.24	9.18	9.23	9.16	9.17	9.12	9.14	9.04	9.07	9.00	9.01		
85	8.99	8.93	8.98	8.92	8.95	8.95	9.01	8.98	9.01	8.95	8.99	8.92	8.91	8.83	8.85	8.75	8.81		
90	8.73	8.71	8.67	8.57	8.66	8.59	8.66	8.60	8.69	8.59	8.64	8.54	8.58	8.48	8.50	8.41	8.46		
95	8.44	8.42	8.43	8.37	8.39	8.34	8.41	8.34	8.42	8.44	8.40	8.32	8.34	8.24	8.27	8.19	8.24		
100	8.10	7.99	8.03	7.98	8.02	7.95	8.02	7.96	8.02	7.98	8.05	7.90	7.94	7.86	7.90	7.81	7.86		
105	7.82	7.76	7.83	7.73	7.74	7.72	7.75	7.70	7.75	7.67	7.72	7.66	7.67	7.61	7.64	7.58	7.59		
110	7.33	7.31	7.36	7.24	7.27	7.29	7.30	7.24	7.26	7.24	7.29	7.24	7.12	7.02	7.16	7.04	7.17		
115	7.03	7.03	7.06	6.26	6.11	6.75	6.95	6.88	6.95	6.91	6.93	6.73	5.70	5.26	6.29	6.28	6.30		
120	5.97	5.90	5.64	4.31	3.25	4.44	5.13	5.64	5.73	5.64	5.10	4.43	2.91	2.48	4.00	3.87	4.08		
125	4.86	4.45	4.30	3.17	2.17	2.98	3.64	4.05	4.20	4.04	3.62	2.97	2.11	2.06	2.91	2.42	2.59		
130	2.66	2.23	2.84	2.82	2.94	2.73	2.34	2.11	2.09	2.13	2.34	2.75	3.03	2.95	2.62	1.41	1.18		
135	2.09	1.34	2.28	2.68	3.67	3.66	2.83	2.33	2.13	2.34	2.88	3.70	3.73	2.93	2.55	1.38	1.53		
140	2.17	1.64	2.05	2.13	3.23	3.94	3.97	3.76	3.56	3.77	4.01	4.00	3.28	2.30	2.17	1.56	1.99		
145	2.62	1.78	1.65	1.49	2.71	3.35	3.65	3.69	3.74	3.72	3.67	3.39	2.83	1.53	1.73	1.59	2.38		
150	2.33	1.79	1.23	0.71	1.32	2.11	2.63	2.92	3.05	2.96	2.70	2.22	1.40	0.61	1.16	1.64	2.22		
155	1.91	1.55	0.84	0.19	0.66	1.25	1.68	1.90	2.02	1.93	1.72	1.32	0.63	0.20	0.63	1.52	1.94		
160	0.22	0.25	0.20	0.19	0.20	0.20	0.21	0.29	0.42	0.28	0.22	0.20	0.21	0.21	0.20	0.27	0.24		
165	0.37	0.33	0.25	0.21	0.20	0.24	0.19	0.20	0.19	0.19	0.19	0.26	0.21	0.22	0.24	0.32	0.28		
170	0.48	0.33	0.23	0.23	0.22	0.20	0.27	0.31	0.37	0.36	0.30	0.22	0.21	0.23	0.24	0.30	0.50		
175	0.21	0.19	0.20	0.19	0.19	0.19	0.20	0.19	0.22	0.19	0.20	0.17	0.20	0.19	0.20	0.19	0.21		
180	0.19	0.19	0.19	0.19	0.19	0.19	0.19	0.19	0.19	0.19	0.19	0.17	0.19	0.19	0.19	0.19	0.20		

C Range: 0 - 360DEG  
 C Interval: 10.0DEG  
 Test Speed: HIGH  
 Temperature:25.3DEG  
 Operators:LQL  
 Test Date:24 July 2023

g Range: 0 - 180DEG  
 Interval: 2.0DEG  
 Test System:EVERFINE GO-2000B\_V1 SYSTEM V2.0.403  
 Humidity:65.0%  
 Test Distance:10.365m [K=1.0000]  
 Remarks: SMD