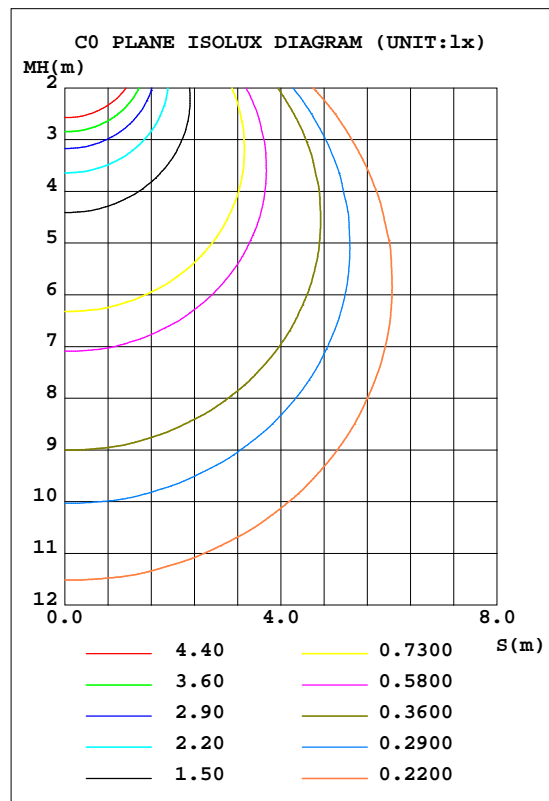
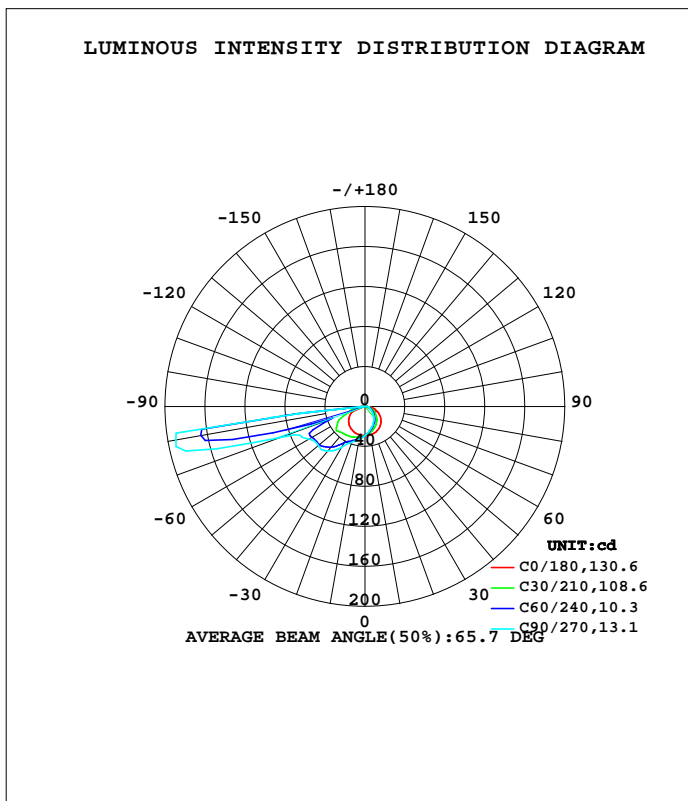


LUMINAIRE PHOTOMETRIC TEST REPORT

Test:U:230.75V I:0.0288A P:6.0923W PF:0.9171 Freq:49.99Hz Lamp Flux:178.698x1 lm		
NAME: Medium foro LED recessed wall light	TYPE:	WEIGHT:
SPEC.:	DIM.:	SERIAL No.:
MFR.: CG LIGHTING	SUR.:	Shielding Angle:

DATA OF LAMP		PHOTOMETRIC DATA			
MODEL	1516B-00+5R	Imax(cd)	193.3	S/MH(C0/180)	1.37
NOMINAL POWER(W)		LOR(%)	100.0	S/MH(C90/270)	2.52
RATED VOLTAGE(V)	230.0	TOTAL FLUX(lm)	178.70	h UP, DN(C0-180)	0.0,20.3
NOMINAL FLUX(lm)	178.698	CIE CLASS	DIRECT	h UP, DN(C180-360)	0.0,79.7
LAMPS INSIDE	1	h up(%)	0.0	CIBSE SHR NOM	1.50
TEST VOLTAGE(V)	230.0	h down(%)	100.0	CIBSE SHR MAX	1.55



C Range: 0 - 360DEG  
 C Interval: 10.0DEG  
 Test Speed: HIGH  
 Temperature:25.3DEG  
 Operators:LQL  
 Test Date:26 July 2023

Range: 0 - 90DEG  
 Interval: 2.0DEG  
 Test System:EVERFINE GO-2000B\_V1 SYSTEM V2.0.403  
 Humidity:65.0%  
 Test Distance:10.365m [K=1.0000]  
 Remarks: ZG1BGC LSC6W500LR-Z UNI

ZONAL FLUX DIAGRAM

ZONAL FLUX DIAGRAM:

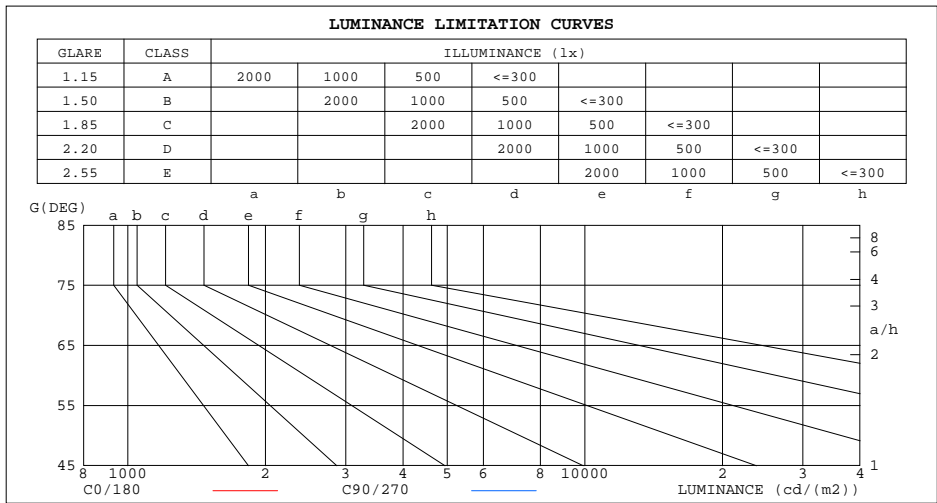
g	C0	C45	C90	C135	C180	C225	C270	C315	g	F zone	F total	%lum,lamp
10	29.02	26.35	25.24	26.35	29.03	31.95	33.23	32.10	0- 10	2.785	2.785	1.56,1.56
20	28.23	23.34	21.40	23.45	28.31	34.67	38.06	34.80	10- 20	8.248	11.03	6.17,6.17
30	26.71	20.09	17.62	20.18	26.81	37.99	47.42	37.96	20- 30	13.45	24.49	13.7,13.7
40	24.35	16.64	13.95	16.70	24.59	44.98	58.29	44.71	30- 40	18.82	43.31	24.2,24.2
50	21.12	13.08	10.38	13.16	21.40	52.19	61.10	51.93	40- 50	23.65	66.96	37.5,37.5
60	16.88	9.584	7.233	9.639	17.37	42.77	65.27	42.36	50- 60	25.84	92.80	51.9,51.9
70	12.22	6.450	4.985	6.487	12.43	22.22	92.47	22.74	60- 70	24.63	117.4	65.7,65.7
80	7.449	3.800	3.505	3.793	7.688	98.03	192.1	93.01	70- 80	40.56	158.0	88.4,88.4
90	0.1563	0.7071	0.8560	0.7592	0.1489	0.1117	0.1117	0.1005	80- 90	20.71	178.7	100,100
100									90-100			
110									100-110			
120									110-120			
130									120-130			
140									130-140			
150									140-150			
160									150-160			
170									160-170			
180									170-180			
DEG	LUMINOUS INTENSITY:cd									UNIT:lm		

C Range: 0 - 360DEG  
 C Interval: 10.0DEG  
 Test Speed: HIGH  
 Temperature:25.3DEG  
 Operators:LQL  
 Test Date:26 July 2023

g Range: 0 - 90DEG  
 Interval: 2.0DEG  
 Test System:EVERFINE GO-2000B\_V1 SYSTEM V2.0.403  
 Humidity:65.0%  
 Test Distance:10.365m [K=1.0000]  
 Remarks: ZG1BGC LSC6W500LR-Z UNI

LUMINANCE LIMITATION CURVES

Test:U:230.75V I:0.0288A P:6.0923W PF:0.9171 Freq:49.99Hz Lamp Flux:178.698x1 lm		
NAME: Medium foro LED recessed wall light	TYPE:	WEIGHT:
SPEC.:	DIM.:	SERIAL No.:
MFR.: CG LIGHTING	SUR.:	Shielding Angle:



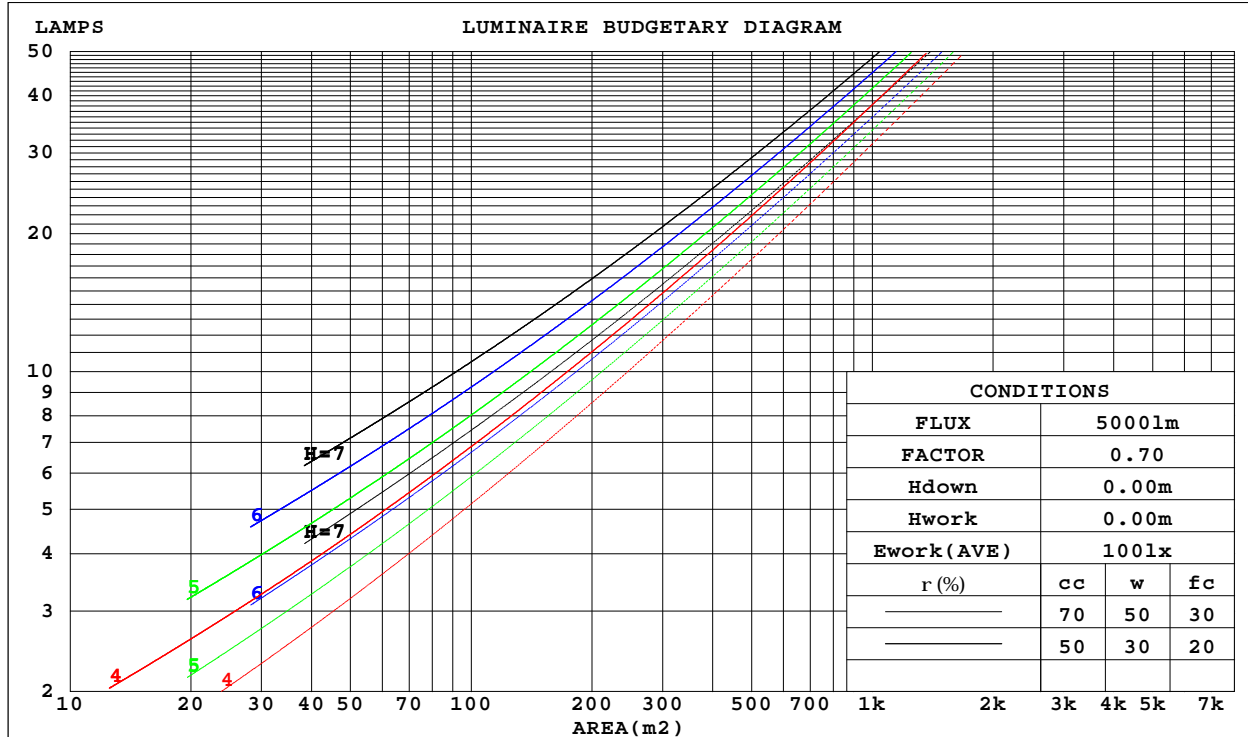
C Range: 0 - 360DEG  
 C Interval: 10.0DEG  
 Test Speed: HIGH  
 Temperature:25.3DEG  
 Operators:LQL  
 Test Date:26 July 2023

G Range: 0 - 90DEG  
 G Interval: 2.0DEG  
 Test System:EVERFINE GO-2000B\_V1 SYSTEM V2.0.403  
 Humidity:65.0%  
 Test Distance:10.365m [K=1.0000]  
 Remarks: ZG1BGC LSC6W500LR-Z UNI

CU AND LUMINAIRE BUDGETARY ESTIMATE DIAGRAM

Test:U:230.75V I:0.0288A P:6.0923W PF:0.9171 Freq:49.99Hz Lamp Flux:178.698x1 lm		
NAME: Medium foro LED recessed wall light	TYPE:	WEIGHT:
SPEC.:	DIM.:	SERIAL No.:
MFR.: CG LIGHTING	SUR.:	Shielding Angle:

r <sub>cc</sub>	80%			70%			50%			30%			10%			0
r <sub>w</sub>	50%	30%	10%	50%	30%	10%	50%	30%	10%	50%	30%	10%	50%	30%	10%	0
r <sub>fc</sub>	20%			20%			20%			20%			20%			0
RCR	RCR:Room Cavity Ratio						Coefficients of Utilization(CU)									
0.0	1.19	1.19	1.19	1.16	1.16	1.16	1.11	1.11	1.11	1.06	1.06	1.06	1.02	1.02	1.02	.00
1.0	.94	.87	.81	.92	.85	.80	.87	.82	.77	.83	.78	.74	.79	.75	.72	.69
2.0	.77	.68	.59	.75	.66	.59	.71	.64	.57	.68	.61	.56	.65	.59	.54	.52
3.0	.66	.55	.46	.64	.54	.45	.61	.52	.45	.57	.50	.44	.55	.48	.43	.40
4.0	.57	.46	.37	.55	.45	.37	.52	.43	.36	.50	.42	.35	.48	.41	.35	.32
5.0	.50	.39	.31	.49	.38	.31	.46	.37	.30	.44	.36	.30	.42	.35	.29	.27
6.0	.44	.34	.26	.43	.33	.26	.41	.32	.26	.40	.31	.25	.38	.31	.25	.23
7.0	.40	.30	.23	.39	.29	.22	.37	.29	.22	.36	.28	.22	.34	.27	.22	.19
8.0	.36	.26	.20	.35	.26	.20	.34	.26	.20	.33	.25	.19	.31	.24	.19	.17
9.0	.33	.24	.18	.32	.24	.17	.31	.23	.17	.30	.23	.17	.29	.22	.17	.15
10.0	.30	.22	.16	.30	.21	.16	.29	.21	.15	.28	.20	.15	.27	.20	.15	.13



C Range: 0 - 360DEG  
 C Interval: 10.0DEG  
 Test Speed: HIGH  
 Temperature:25.3DEG  
 Operators:LQL  
 Test Date:26 July 2023

Range: 0 - 90DEG  
 Interval: 2.0DEG  
 Test System:EVERFINE GO-2000B\_V1 SYSTEM V2.0.403  
 Humidity:65.0%  
 Test Distance:10.365m [K=1.0000]  
 Remarks: ZG1BGC LSC6W500LR-Z UNI

WEC AND CCEC

Test:U:230.75V I:0.0288A P:6.0923W PF:0.9171 Freq:49.99Hz Lamp Flux:178.698x1 lm		
NAME: Medium foro LED recessed wall light	TYPE:	WEIGHT:
SPEC.:	DIM.:	SERIAL No.:
MFR.: CG LIGHTING	SUR.:	Shielding Angle:

rcc	80%			70%			50%			30%			10%			0
rw	50%	30%	10%	50%	30%	10%	50%	30%	10%	50%	30%	10%	50%	30%	10%	0
rfc	20%			20%			20%			20%			20%			0
RCR	RCR:Room Cavity Ratio						Wall Exitance Coefficients(WEC)									
0.0																
1.0	.498	.283	.090	.490	.279	.089	.476	.273	.087	.463	.267	.086	.451	.261	.084	
2.0	.416	.228	.070	.409	.225	.069	.397	.220	.068	.385	.216	.068	.374	.211	.067	
3.0	.358	.191	.057	.352	.189	.057	.341	.185	.056	.330	.181	.056	.320	.177	.055	
4.0	.314	.163	.048	.309	.162	.048	.299	.158	.047	.289	.155	.047	.281	.152	.046	
5.0	.280	.143	.041	.275	.141	.041	.266	.139	.041	.258	.136	.040	.250	.134	.040	
6.0	.252	.127	.036	.248	.125	.036	.240	.123	.036	.233	.121	.036	.226	.119	.035	
7.0	.230	.114	.032	.226	.113	.032	.219	.111	.032	.213	.109	.032	.206	.107	.032	
8.0	.211	.103	.029	.208	.102	.029	.202	.101	.029	.196	.099	.029	.190	.098	.028	
9.0	.195	.094	.026	.192	.094	.026	.187	.092	.026	.181	.091	.026	.176	.090	.026	
10.0	.181	.087	.024	.179	.086	.024	.174	.085	.024	.169	.084	.024	.165	.083	.024	

rcc	80%			70%			50%			30%			10%			0
rw	50%	30%	10%	50%	30%	10%	50%	30%	10%	50%	30%	10%	50%	30%	10%	0
rfc	20%			20%			20%			20%			20%			0
RCR	RCR:Room Cavity Ratio						Ceiling Cavity Exitance Coefficients(CCEC)									
0.0	.190	.190	.190	.163	.163	.163	.111	.111	.111	.064	.064	.064	.020	.020	.020	
1.0	.193	.154	.120	.165	.133	.103	.113	.091	.071	.065	.053	.041	.021	.017	.013	
2.0	.189	.131	.083	.162	.113	.072	.111	.078	.050	.064	.045	.029	.021	.015	.010	
3.0	.181	.115	.062	.156	.099	.054	.107	.069	.038	.062	.040	.022	.020	.013	.007	
4.0	.173	.102	.049	.148	.089	.042	.102	.062	.030	.059	.036	.018	.019	.012	.006	
5.0	.164	.093	.040	.141	.080	.035	.097	.056	.024	.056	.033	.015	.018	.011	.005	
6.0	.155	.084	.034	.134	.073	.029	.092	.051	.021	.053	.030	.012	.017	.010	.004	
7.0	.147	.078	.029	.127	.067	.025	.087	.047	.018	.051	.028	.011	.016	.009	.004	
8.0	.139	.072	.025	.120	.062	.022	.083	.044	.016	.048	.026	.009	.016	.008	.003	
9.0	.132	.067	.023	.114	.058	.020	.079	.041	.014	.046	.024	.008	.015	.008	.003	
10.0	.126	.062	.020	.108	.054	.018	.075	.038	.013	.044	.023	.008	.014	.007	.003	

C Range: 0 - 360DEG  
 C Interval: 10.0DEG  
 Test Speed: HIGH  
 Temperature:25.3DEG  
 Operators:LQL  
 Test Date:26 July 2023

g Range: 0 - 90DEG  
 g Interval: 2.0DEG  
 Test System:EVERFINE GO-2000B\_V1 SYSTEM V2.0.403  
 Humidity:65.0%  
 Test Distance:10.365m [K=1.0000]  
 Remarks: ZG1BGC LSC6W500LR-Z UNI

UGR(Unified Glare Rating) Table

Test:U:230.75V I:0.0288A P:6.0923W PF:0.9171 Freq:49.99Hz Lamp Flux:178.698x1 lm										
NAME: Medium foro LED recessed wall light					TYPE:			WEIGHT:		
SPEC.:					DIM.:			SERIAL No.:		
MFR.: CG LIGHTING					SUR.:			Shielding Angle:		
ceiling/cavity	0.7	0.7	0.5	0.5	0.3	0.7	0.7	0.5	0.5	0.3
walls	0.5	0.3	0.5	0.3	0.3	0.5	0.3	0.5	0.3	0.3
working plane	0.2	0.2	0.2	0.2	0.2	0.2	0.2	0.2	0.2	0.2
Room dimensions	Viewed crosswise					Viewed endwise				
x = 2H y = 2H	11.6	13.5	11.9	13.7	14.0	8.4	10.2	8.7	10.5	10.7
3H	13.7	15.5	14.1	15.7	16.0	9.9	11.6	10.2	11.9	12.1
4H	14.8	16.5	15.1	16.7	17.0	10.6	12.3	11.0	12.6	12.9
6H	15.8	17.5	16.2	17.8	18.1	11.5	13.1	11.9	13.4	13.7
8H	16.3	17.8	16.6	18.1	18.5	12.1	13.6	12.4	13.9	14.3
12H	16.6	18.1	16.9	18.4	18.7	13.0	14.5	13.3	14.8	15.1
4H 2H	11.8	13.5	12.2	13.8	14.1	9.3	11.0	9.6	11.2	11.5
3H	14.1	15.6	14.5	15.9	16.3	10.9	12.5	11.3	12.8	13.1
4H	15.3	16.7	15.7	17.0	17.4	11.9	13.3	12.3	13.6	14.0
6H	16.5	17.8	16.9	18.2	18.6	12.9	14.2	13.3	14.6	14.9
8H	17.1	18.3	17.5	18.7	19.1	13.5	14.8	14.0	15.1	15.6
12H	17.5	18.6	17.9	19.0	19.5	14.6	15.7	15.0	16.1	16.5
8H 4H	15.4	16.6	15.8	17.0	17.4	12.4	13.7	12.9	14.0	14.4
6H	16.8	17.9	17.3	18.3	18.7	13.7	14.7	14.1	15.2	15.6
8H	17.5	18.4	18.0	18.9	19.3	14.5	15.4	15.0	15.9	16.3
12H	18.1	18.9	18.5	19.4	19.9	15.7	16.6	16.2	17.0	17.5
12H 4H	15.4	16.6	15.8	17.0	17.4	12.5	13.7	13.0	14.1	14.5
6H	16.9	17.8	17.3	18.3	18.7	13.9	14.9	14.4	15.3	15.8
8H	17.6	18.4	18.1	18.9	19.4	14.8	15.6	15.3	16.1	16.6
Variations with the observer position at spacings:										
S = 1.0H	+ 0.1 / - 0.1					+ 0.2 / - 0.2				
1.5H	+ 0.3 / - 0.3					+ 0.2 / - 0.3				
2.0H	+ 0.5 / - 0.6					+ 0.1 / - 0.4				

CIE Pub.117, 178.7 lm Total Lamp Luminous Flux Correct (8log(F/F0) = -6.0)

C Range: 0 - 360DEG  
 C Interval: 10.0DEG  
 Test Speed: HIGH  
 Temperature:25.3DEG  
 Operators:LQL  
 Test Date:26 July 2023

g Range: 0 - 90DEG  
 g Interval: 2.0DEG  
 Test System:EVERFINE GO-2000B\_V1 SYSTEM V2.0.403  
 Humidity:65.0%  
 Test Distance:10.365m [K=1.0000]  
 Remarks: ZG1BGC LSC6W500LR-Z UNI

UTILIZATION FACTORS TABLE

Test:U:230.75V I:0.0288A P:6.0923W PF:0.9171 Freq:49.99Hz Lamp Flux:178.698x1 lm		
NAME: Medium foro LED recessed wall light	TYPE:	WEIGHT:
SPEC.:	DIM.:	SERIAL No.:
MFR.: CG LIGHTING	SUR.:	Shielding Angle:

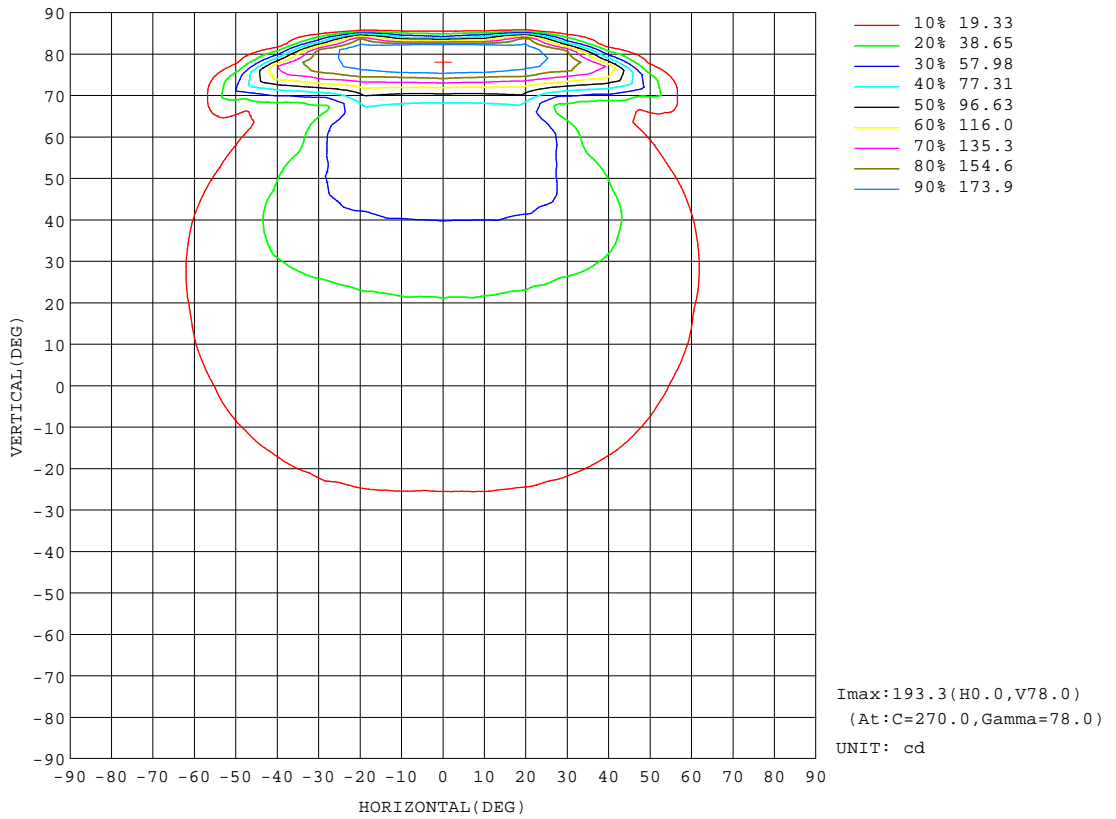
REFLECTANCE										
Ceiling	0.8	0.8	0.8	0.7	0.7	0.7	0.5	0.5	0.5	0
Walls	0.7	0.5	0.3	0.7	0.5	0.3	0.7	0.5	0.3	0
Working plane	0.2	0.2	0.2	0.2	0.2	0.2	0.2	0.2	0.2	0
ROOM INDEX	UTILIZATION FACTORS(PERCENT) k(RI) x RCR = 5									
k = 0.60	47	33	25	46	33	25	45	33	25	18
0.80	56	41	33	54	41	32	52	40	32	24
1.00	63	49	40	62	48	39	59	51	39	30
1.25	70	56	47	68	55	46	65	54	45	36
1.50	75	62	52	73	61	52	70	59	51	41
2.00	83	71	61	81	69	61	77	67	59	49
2.50	88	77	68	86	75	67	81	72	65	54
3.00	92	82	73	90	80	72	85	77	70	59
4.00	98	89	81	95	87	80	90	83	77	66
5.00	101	93	87	98	91	85	93	87	82	71
ROOM INDEX	UF(total)									Direct
According to DIN EN 13032-2 2004			Suspended				SHRNOM = 1.25			

C Range: 0 - 360DEG  
 C Interval: 10.0DEG  
 Test Speed: HIGH  
 Temperature:25.3DEG  
 Operators:LQL  
 Test Date:26 July 2023

g Range: 0 - 90DEG  
 Interval: 2.0DEG  
 Test System:EVERFINE GO-2000B\_V1 SYSTEM V2.0.403  
 Humidity:65.0%  
 Test Distance:10.365m [K=1.0000]  
 Remarks: ZG1BGC LSC6W500LR-Z UNI

ISOCANDELA DIAGRAM

Test:U:230.75V I:0.0288A P:6.0923W PF:0.9171 Freq:49.99Hz Lamp Flux:178.698x1 lm		
NAME: Medium foro LED recessed wall light	TYPE:	WEIGHT:
SPEC.:	DIM.:	SERIAL No.:
MFR.: CG LIGHTING	SUR.:	Shielding Angle:



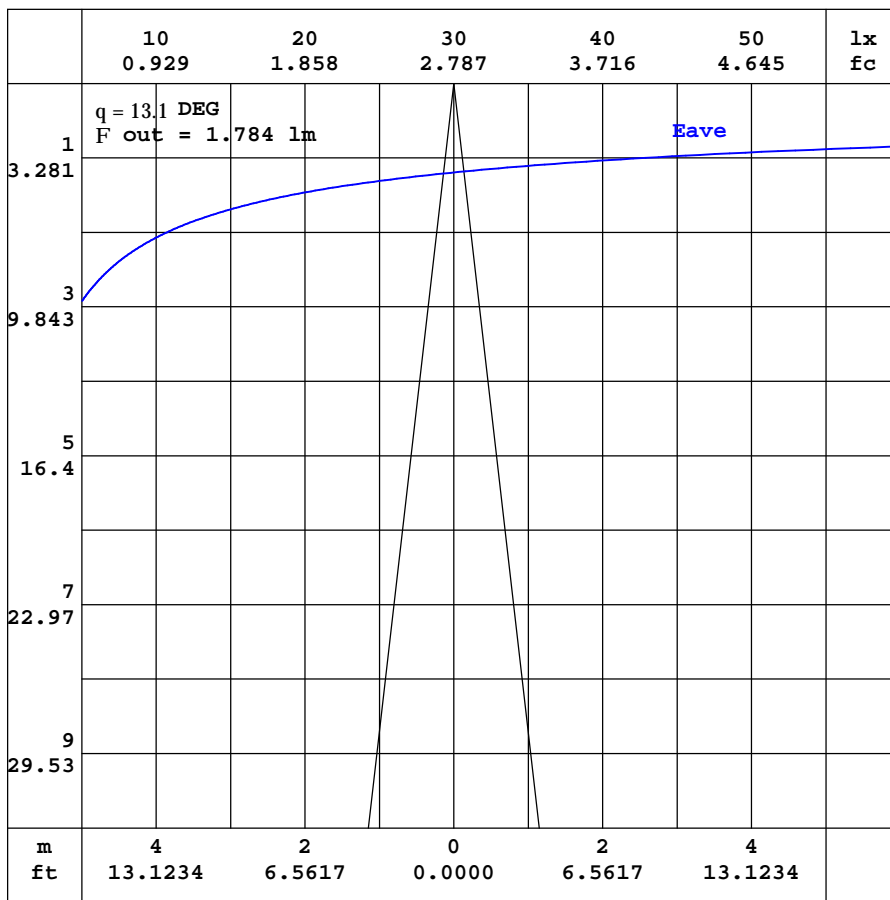
C Range: 0 - 360DEG  
 C Interval: 10.0DEG  
 Test Speed: HIGH  
 Temperature:25.3DEG  
 Operators:LQL  
 Test Date:26 July 2023

Range: 0 - 90DEG  
 Interval: 2.0DEG  
 Test System:EVERFINE GO-2000B\_V1 SYSTEM V2.0.403  
 Humidity:65.0%  
 Test Distance:10.365m [K=1.0000]  
 Remarks: ZG1BGC LSC6W500LR-Z UNI



AAI CURVES

Test:U:230.75V I:0.0288A P:6.0923W PF:0.9171 Freq:49.99Hz Lamp Flux:178.698x1 lm		
NAME: Medium foro LED recessed wall light	TYPE:	WEIGHT:
SPEC.:	DIM.:	SERIAL No.:
MFR.: CG LIGHTING	SUR.:	Shielding Angle:



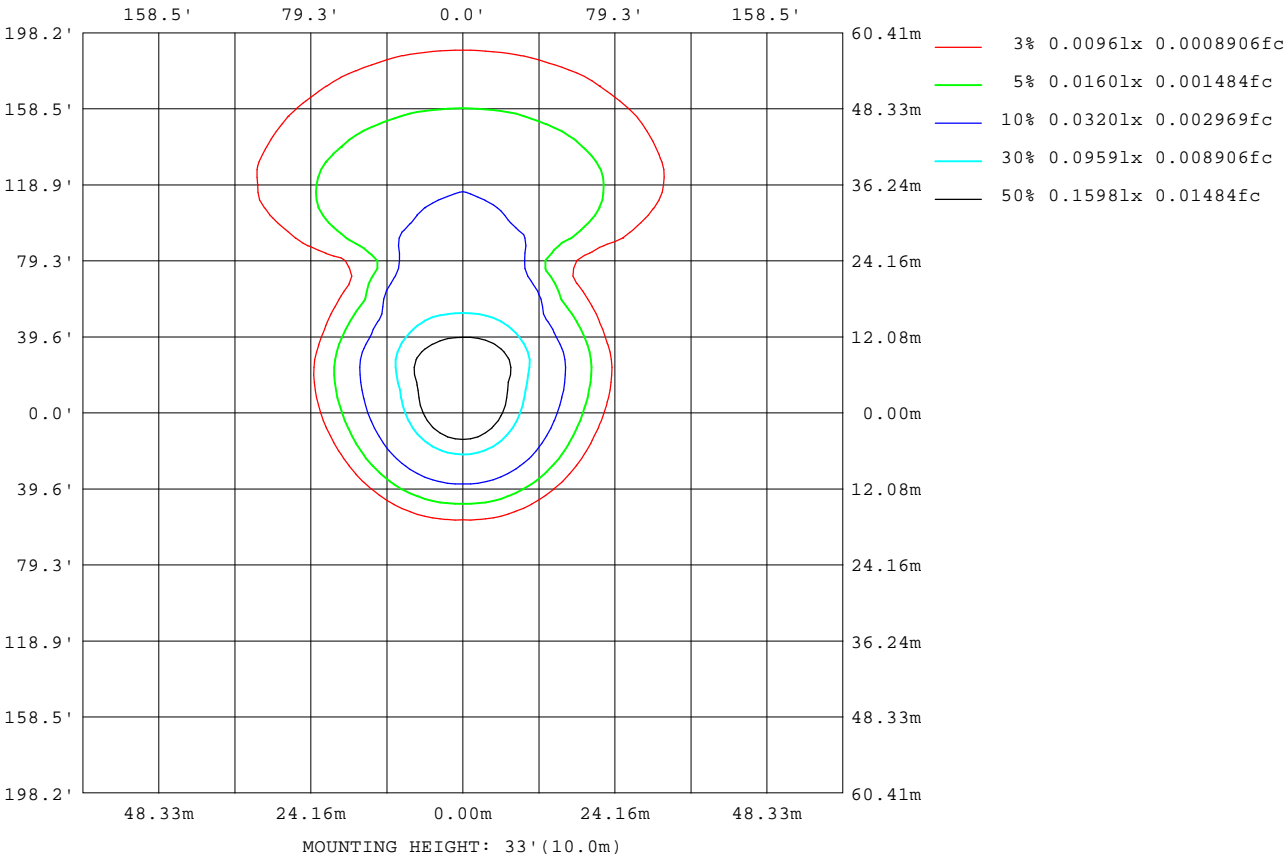
Note:The Curves indicate the illuminated area and the average illumination when the luminaire is at different distance.

C Range: 0 - 360DEG  
 C Interval: 10.0DEG  
 Test Speed: HIGH  
 Temperature:25.3DEG  
 Operators:LQL  
 Test Date:26 July 2023

Range: 0 - 90DEG  
 Interval: 2.0DEG  
 Test System:EVERFINE GO-2000B\_V1 SYSTEM V2.0.403  
 Humidity:65.0%  
 Test Distance:10.365m [K=1.0000]  
 Remarks: ZG1BGC LSC6W500LR-Z UNI

**ISOLUX DIAGRAM**

Test:U:230.75V I:0.0288A P:6.0923W PF:0.9171 Freq:49.99Hz Lamp Flux:178.698x1 lm		
NAME: Medium foro LED recessed wall light	TYPE:	WEIGHT:
SPEC.:	DIM.:	SERIAL No.:
MFR.: CG LIGHTING	SUR.:	Shielding Angle:



C Range: 0 - 360DEG  
 C Interval: 10.0DEG  
 Test Speed: HIGH  
 Temperature: 25.3DEG  
 Operators: LQL  
 Test Date: 26 July 2023

Range: 0 - 90DEG  
 Interval: 2.0DEG  
 Test System: EVERFINE GO-2000B\_V1 SYSTEM V2.0.403  
 Humidity: 65.0%  
 Test Distance: 10.365m [K=1.0000]  
 Remarks: ZG1BGC LSC6W500LR-Z UNI

LED Avg.L Report

Test:U:230.75V I:0.0288A P:6.0923W PF:0.9171 Freq:49.99Hz Lamp Flux:178.698x1 lm		
NAME: Medium foro LED recessed wall light	TYPE:	WEIGHT:
SPEC.:	DIM.:	SERIAL No.:
MFR.: CG LIGHTING	SUR.:	Shielding Angle:

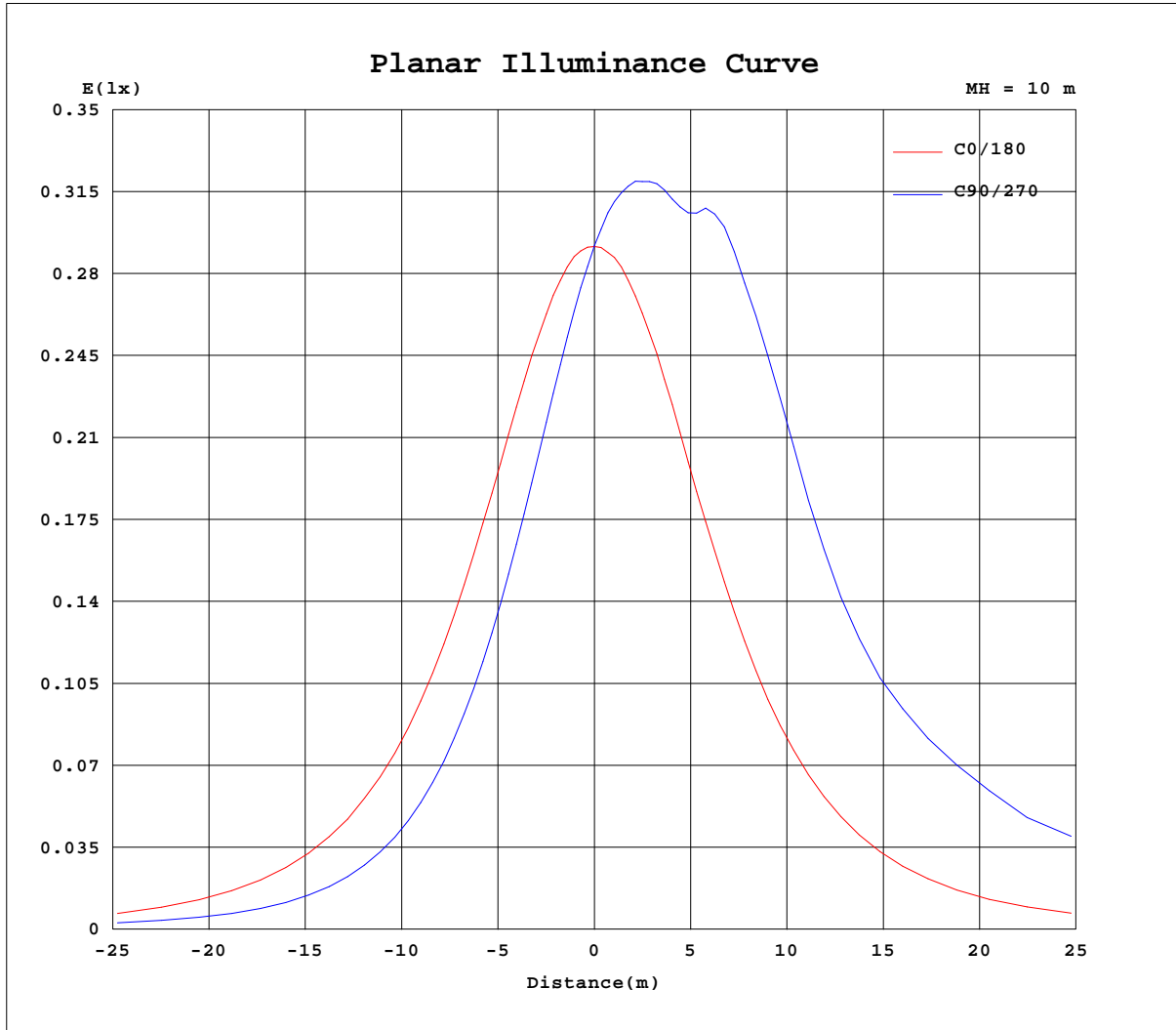
AvgL	cd/m2
L_0~180(65)av	349
L_0~180(75)av	386
L_0~180(85)av	399
L_90~270(65)av	907
L_90~270(75)av	3389
L_90~270(85)av	1618
L_45(65)av	426
L_45(75)av	908
L_45(85)av	268

Standard: GB/T 29293-2012

C Range: 0 - 360DEG  
 C Interval: 10.0DEG  
 Test Speed: HIGH  
 Temperature:25.3DEG  
 Operators:LQL  
 Test Date:26 July 2023

g Range: 0 - 90DEG  
 Interval: 2.0DEG  
 Test System:EVERFINE GO-2000B\_V1 SYSTEM V2.0.403  
 Humidity:65.0%  
 Test Distance:10.365m [K=1.0000]  
 Remarks: ZG1BGC LSC6W500LR-Z UNI

Planar Illuminance Curve



C Range: 0 - 360DEG  
 C Interval: 10.0DEG  
 Test Speed: HIGH  
 Temperature: 25.3DEG  
 Operators: LQL  
 Test Date: 26 July 2023

Page Range: 0 - 90DEG  
 Interval: 2.0DEG  
 Test System: EVERFINE GO-2000B\_V1 SYSTEM V2.0.403  
 Humidity: 65.0%  
 Test Distance: 10.365m [K=1.0000]  
 Remarks: ZG1BGC LSC6W500LR-Z UNI



LUMINOUS DISTRIBUTION INTENSITY DATA

Test:U:230.75V I:0.0288A P:6.0923W PF:0.9171 Freq:49.99Hz Lamp Flux:178.698x1 lm		
NAME: Medium foro LED recessed wall light	TYPE:	WEIGHT:
SPEC.:	DIM.:	SERIAL No.:
MFR.: CG LIGHTING	SUR.:	Shielding Angle:

Table--2

UNIT: cd

C(DEG) g (DEG)	190	200	210	220	230	240	250	260	270	280	290	300	310	320	330	340	350		
0	29.1	29.2	29.2	29.2	29.1	29.2	29.2	29.1	29.2	29.2	29.2	29.2	29.2	29.2	29.3	29.3	29.1		
5	29.4	29.8	29.8	30.2	30.4	30.4	30.7	30.8	30.8	30.7	30.7	30.6	30.3	30.3	30.2	29.8	29.5		
10	29.7	30.4	31.1	31.6	32.3	32.7	33.0	33.1	33.2	33.2	33.0	32.8	32.5	31.7	31.3	30.4	29.8		
15	29.8	30.7	31.8	32.6	33.4	34.1	34.6	34.8	35.0	34.9	34.5	34.0	33.5	32.8	31.9	30.8	30.0		
20	29.8	31.2	32.7	34.0	35.3	36.4	37.2	37.7	38.1	37.8	37.4	36.6	35.5	34.1	32.6	31.3	29.8		
25	29.5	31.2	33.1	35.1	37.0	38.2	39.6	40.0	40.5	40.1	39.4	38.3	36.8	35.1	33.1	31.4	29.5		
30	29.0	31.3	33.8	36.4	39.6	42.1	44.7	46.5	47.4	46.6	44.8	42.2	39.4	36.5	33.6	31.4	29.0		
35	28.5	31.2	34.4	37.8	42.0	46.7	50.2	51.9	52.7	51.9	50.4	46.6	42.1	37.7	33.9	31.1	28.3		
40	27.3	30.6	34.8	41.4	48.6	53.2	56.2	57.6	58.3	57.8	56.6	53.2	48.7	40.7	34.5	30.6	27.0		
45	26.3	30.0	35.6	45.0	52.2	56.3	59.3	60.3	60.9	60.8	59.7	56.7	52.2	44.7	34.9	29.8	26.1		
50	24.4	29.0	37.5	48.3	56.1	59.4	60.6	60.9	61.1	61.5	61.6	60.5	55.9	48.0	36.2	28.7	24.7		
55	23.4	27.9	35.4	48.5	56.3	59.9	61.2	60.9	61.1	61.8	61.4	60.3	55.6	47.6	34.2	27.6	23.0		
60	20.9	25.7	31.6	35.9	49.6	61.4	65.9	65.2	65.3	65.8	64.9	60.4	48.4	36.3	31.3	25.4	20.7		
65	18.7	23.2	27.1	29.2	33.7	62.0	70.8	70.5	70.4	70.5	69.7	59.6	33.7	30.0	27.7	23.0	18.4		
70	14.8	16.8	18.0	20.6	23.9	34.5	87.9	88.3	92.5	88.7	85.8	31.2	24.1	21.4	18.7	17.4	14.8		
75	12.4	13.8	14.8	17.3	51.2	95.6	133	146	154	145	128	89.3	45.1	17.1	15.4	14.2	12.5		
80	9.21	10.4	11.1	55.2	141	167	183	191	192	191	185	166	136	49.6	11.4	10.5	9.00		
85	5.51	6.41	7.09	7.35	7.37	67.6	159	80.1	63.1	87.9	167	60.8	7.92	7.82	7.28	4.39	3.36		
90	0.15	0.13	0.14	0.11	0.11	0.15	0.15	0.11	0.11	0.15	0.17	0.11	0.10	0.10	0.10	0.11	0.12		

C Range: 0 - 360DEG  
 C Interval: 10.0DEG  
 Test Speed: HIGH  
 Temperature:25.3DEG  
 Operators:LQL  
 Test Date:26 July 2023

g Range: 0 - 90DEG  
 Interval: 2.0DEG  
 Test System:EVERFINE GO-2000B\_V1 SYSTEM V2.0.403  
 Humidity:65.0%  
 Test Distance:10.365m [K=1.0000]  
 Remarks: ZG1BGC LSC6W500LR-Z UNI