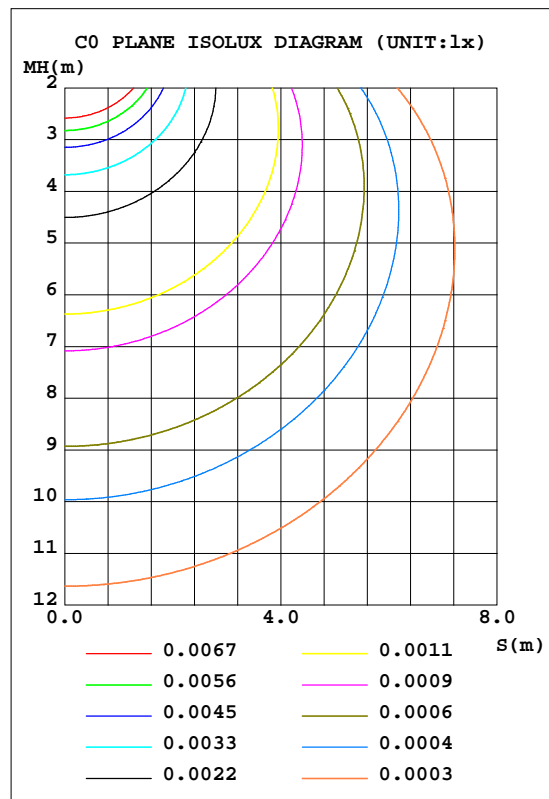
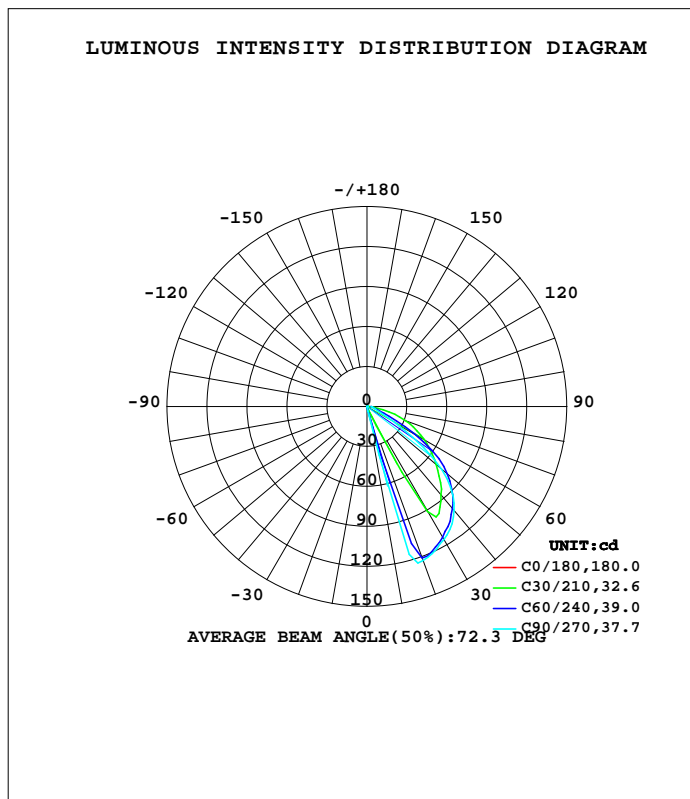


LUMINAIRE PHOTOMETRIC TEST REPORT

Test:U:230.72V I:0.0328A P:4.1682W PF:0.5489 Freq:49.99Hz Lamp Flux:110.569x1 lm		
NAME: Walloo 14 3.2W CCT LED outdoor wall light	TYPE:	WEIGHT:
SPEC.:	DIM.:	SERIAL No.:
MFR.: CG LIGHTING	SUR.:	Shielding Angle:

DATA OF LAMP		PHOTOMETRIC DATA				Eff: 26.53 lm/W
MODEL	2198ACCT-Q5	I _{max} (cd)	123.6	S/MH(C0/180)	1.53	
NOMINAL POWER(W)		LOR(%)	100.0	S/MH(C90/270)	0.55	
RATED VOLTAGE(V)	230.0	TOTAL FLUX(lm)	110.57	h UP, DN(C0-180)	0.0,99.8	
NOMINAL FLUX(lm)	110.569	CIE CLASS	DIRECT	h UP, DN(C180-360)	0.0,0.2	
LAMPS INSIDE	1	h up(%)	0.0	CIBSE SHR NOM	0.00	
TEST VOLTAGE(V)	230.0	h down(%)	100.0	CIBSE SHR MAX	1.00	



C Range: 0 - 360DEG
 C Interval: 10.0DEG
 Test Speed: HIGH
 Temperature:25.3DEG
 Operators:LQL
 Test Date:01 August 2023

Range: 0 - 90DEG
 Interval: 2.0DEG
 Test System:EVERFINE GO-2000B_V1 SYSTEM V2.0.403
 Humidity:65.0%
 Test Distance:10.365m [K=1.0000]
 Remarks: SMD MINI-6-350

ZONAL FLUX DIAGRAM

ZONAL FLUX DIAGRAM:

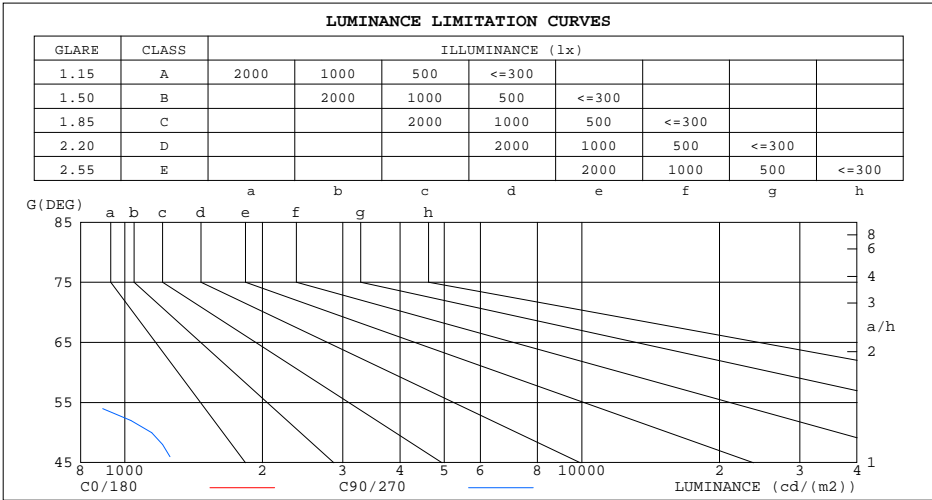
g	C0	C45	C90	C135	C180	C225	C270	C315	g	F zone	F total	%lum,lamp
10	0.0447	0.1081	0.5929	0.1901	0.0447	0.0521	0.0596	0.0744	0- 10	0.0091	0.0091	0.01,0.01
20	0.0447	55.24	122.9	61.41	0.0447	0.0373	0.0298	0.0484	10- 20	4.070	4.079	3.69,3.69
30	0.0447	110.6	115.4	106.4	0.0447	0.0223	0.0149	0.0335	20- 30	16.78	20.86	18.9,18.9
40	0.0447	96.02	101.8	89.80	0.0447	0.0297	0.0149	0.0335	30- 40	24.19	45.06	40.7,40.7
50	0.0447	77.42	73.57	70.90	0.0447	0.0224	0.0149	0.0372	40- 50	26.35	71.41	64.6,64.6
60	0.0447	52.70	24.24	45.38	0.0447	0.0335	0.0149	0.0372	50- 60	20.97	92.37	83.5,83.5
70	0.0447	21.10	7.722	15.82	0.0521	0.0521	0.0223	0.0521	60- 70	11.50	103.9	93.9,93.9
80	0.0447	4.861	4.628	4.174	0.0521	0.0894	0.0223	0.1190	70- 80	4.916	108.8	98.4,98.4
90	0.0447	2.255	3.350	2.296	0.0521	0.2159	0.1265	0.1675	80- 90	1.775	110.6	100,100
100									90-100			
110									100-110			
120									110-120			
130									120-130			
140									130-140			
150									140-150			
160									150-160			
170									160-170			
180									170-180			
DEG	LUMINOUS INTENSITY:cd									UNIT:lm		

C Range: 0 - 360DEG
 C Interval: 10.0DEG
 Test Speed: HIGH
 Temperature:25.3DEG
 Operators:LQL
 Test Date:01 August 2023

g Range: 0 - 90DEG
 Interval: 2.0DEG
 Test System:EVERFINE GO-2000B_V1 SYSTEM V2.0.403
 Humidity:65.0%
 Test Distance:10.365m [K=1.0000]
 Remarks: SMD MINI-6-350

LUMINANCE LIMITATION CURVES

Test:U:230.72V I:0.0328A P:4.1682W PF:0.5489 Freq:49.99Hz Lamp Flux:110.569x1 lm		
NAME: Walloo 14 3.2W CCT LED outdoor wall light	TYPE:	WEIGHT:
SPEC.:	DIM.:	SERIAL No.:
MFR.: CG LIGHTING	SUR.:	Shielding Angle:



LUMINANCE cd/(m2)		
G(DEG)	C0/180	C90/270
85	5	454
80	3	267
75	2	236
70	1	226
65	1	324
60	1	485
55	1	917
50	1	1145
45	1	1317

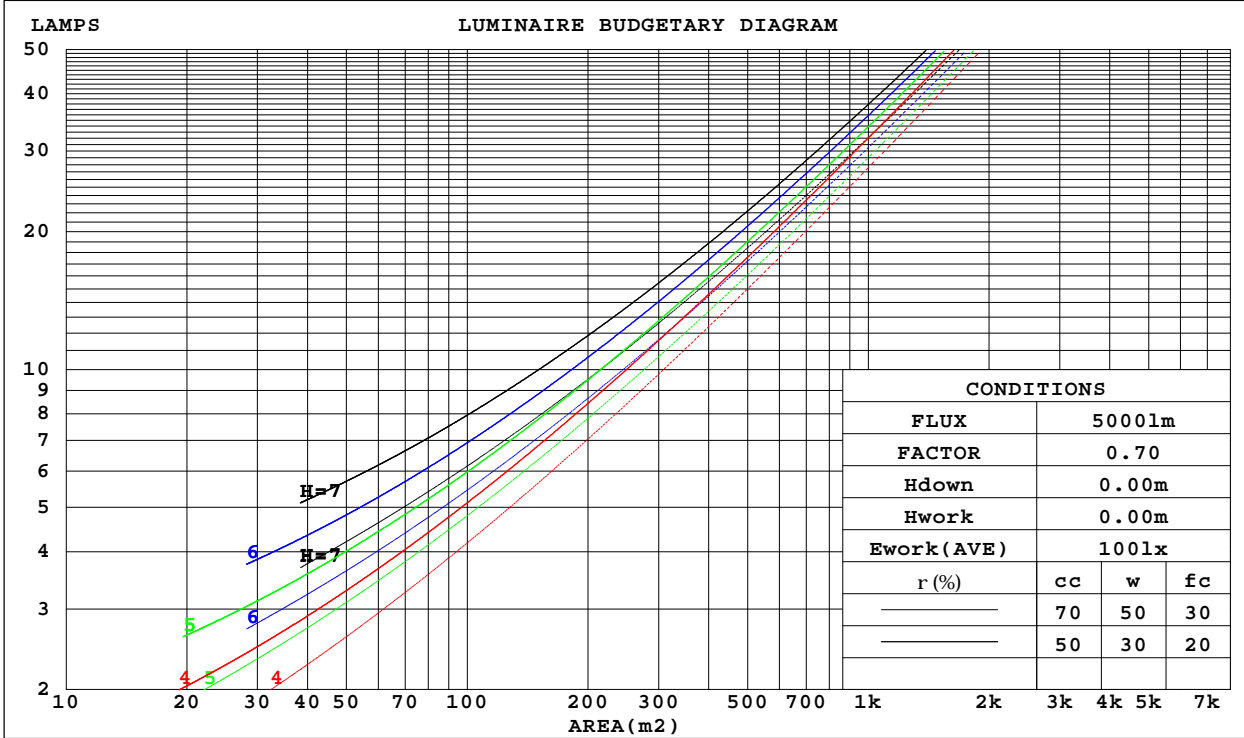
C Range: 0 - 360DEG
 C Interval: 10.0DEG
 Test Speed: HIGH
 Temperature: 25.3DEG
 Operators: LQL
 Test Date: 01 August 2023

G Range: 0 - 90DEG
 G Interval: 2.0DEG
 Test System: EVERFINE GO-2000B_V1 SYSTEM V2.0.403
 Humidity: 65.0%
 Test Distance: 10.365m [K=1.0000]
 Remarks: SMD MINI-6-350

CU AND LUMINAIRE BUDGETARY ESTIMATE DIAGRAM

Test:U:230.72V I:0.0328A P:4.1682W PF:0.5489 Freq:49.99Hz Lamp Flux:110.569x1 lm		
NAME: Walloo 14 3.2W CCT LED outdoor wall light	TYPE:	WEIGHT:
SPEC.:	DIM.:	SERIAL No.:
MFR.: CG LIGHTING	SUR.:	Shielding Angle:

r _{cc}	80%			70%			50%			30%			10%			0
r _w	50%	30%	10%	50%	30%	10%	50%	30%	10%	50%	30%	10%	50%	30%	10%	0
r _{fc}	20%			20%			20%			20%			20%			0
RCR	RCR:Room Cavity Ratio						Coefficients of Utilization(CU)									
0.0	1.19	1.19	1.19	1.16	1.16	1.16	1.11	1.11	1.11	1.06	1.06	1.06	1.02	1.02	1.02	1.00
1.0	1.04	1.00	.96	1.02	.98	.95	.98	.95	.92	.94	.91	.89	.90	.88	.86	.84
2.0	.91	.84	.78	.89	.82	.77	.85	.80	.75	.82	.77	.74	.79	.75	.72	.70
3.0	.79	.71	.64	.77	.70	.63	.74	.68	.62	.72	.66	.61	.69	.64	.60	.58
4.0	.69	.60	.53	.68	.59	.53	.65	.58	.52	.63	.57	.51	.61	.55	.51	.48
5.0	.61	.52	.45	.60	.51	.45	.58	.50	.44	.56	.49	.44	.54	.48	.43	.41
6.0	.54	.45	.38	.53	.44	.38	.51	.43	.38	.50	.43	.37	.48	.42	.37	.35
7.0	.48	.39	.33	.47	.39	.33	.46	.38	.32	.44	.37	.32	.43	.37	.32	.30
8.0	.43	.34	.28	.43	.34	.28	.41	.33	.28	.40	.33	.28	.39	.32	.28	.26
9.0	.39	.30	.25	.38	.30	.25	.37	.30	.24	.36	.29	.24	.35	.29	.24	.22
10.0	.35	.27	.22	.35	.27	.21	.34	.26	.21	.33	.26	.21	.32	.26	.21	.19



C Range: 0 - 360DEG
 C Interval: 10.0DEG
 Test Speed: HIGH
 Temperature:25.3DEG
 Operators:LQL
 Test Date:01 August 2023

Range: 0 - 90DEG
 Interval: 2.0DEG
 Test System:EVERFINE GO-2000B_V1 SYSTEM V2.0.403
 Humidity:65.0%
 Test Distance:10.365m [K=1.0000]
 Remarks: SMD MINI-6-350

WEC AND CCEC

Test:U:230.72V I:0.0328A P:4.1682W PF:0.5489 Freq:49.99Hz Lamp Flux:110.569x1 lm		
NAME: Walloo 14 3.2W CCT LED outdoor wall light	TYPE:	WEIGHT:
SPEC.:	DIM.:	SERIAL No.:
MFR.: CG LIGHTING	SUR.:	Shielding Angle:

rcc	80%			70%			50%			30%			10%			0
rw	50%	30%	10%	50%	30%	10%	50%	30%	10%	50%	30%	10%	50%	30%	10%	0
rfc	20%			20%			20%			20%			20%			0
RCR	RCR:Room Cavity Ratio						Wall Exitance Coefficients(WEC)									
0.0																
1.0	.303	.172	.055	.296	.169	.054	.283	.162	.052	.271	.156	.050	.259	.150	.048	
2.0	.290	.159	.049	.284	.156	.048	.272	.151	.047	.262	.147	.046	.252	.142	.045	
3.0	.272	.145	.043	.267	.143	.043	.257	.139	.042	.247	.135	.042	.238	.132	.041	
4.0	.254	.132	.039	.249	.131	.039	.240	.127	.038	.232	.124	.038	.224	.121	.037	
5.0	.237	.121	.035	.233	.119	.035	.224	.117	.034	.217	.114	.034	.210	.112	.034	
6.0	.221	.111	.032	.217	.110	.032	.210	.108	.031	.203	.106	.031	.197	.104	.031	
7.0	.207	.102	.029	.203	.101	.029	.197	.100	.029	.191	.098	.028	.185	.096	.028	
8.0	.194	.095	.027	.191	.094	.027	.185	.092	.026	.179	.091	.026	.174	.089	.026	
9.0	.182	.088	.025	.179	.087	.025	.174	.086	.024	.169	.085	.024	.164	.083	.024	
10.0	.172	.082	.023	.169	.082	.023	.164	.080	.023	.160	.079	.023	.155	.078	.022	

rcc	80%			70%			50%			30%			10%			0
rw	50%	30%	10%	50%	30%	10%	50%	30%	10%	50%	30%	10%	50%	30%	10%	0
rfc	20%			20%			20%			20%			20%			0
RCR	RCR:Room Cavity Ratio						Ceiling Cavity Exitance Coefficients(CCEC)									
0.0	.190	.190	.190	.163	.163	.163	.111	.111	.111	.064	.064	.064	.020	.020	.020	
1.0	.180	.156	.135	.154	.134	.116	.105	.092	.080	.061	.053	.047	.019	.017	.015	
2.0	.172	.132	.098	.147	.114	.085	.101	.079	.059	.058	.046	.035	.019	.015	.011	
3.0	.165	.114	.074	.141	.099	.064	.097	.069	.045	.056	.040	.027	.018	.013	.009	
4.0	.158	.101	.058	.136	.087	.050	.093	.061	.035	.054	.036	.021	.017	.012	.007	
5.0	.151	.091	.046	.130	.079	.040	.090	.055	.028	.052	.032	.017	.017	.011	.006	
6.0	.145	.083	.038	.125	.072	.033	.086	.050	.023	.050	.029	.014	.016	.010	.005	
7.0	.138	.076	.032	.119	.066	.028	.082	.046	.020	.048	.027	.012	.015	.009	.004	
8.0	.132	.070	.028	.114	.061	.024	.079	.043	.017	.046	.025	.010	.015	.008	.003	
9.0	.126	.065	.024	.109	.057	.021	.075	.040	.015	.044	.024	.009	.014	.008	.003	
10.0	.121	.061	.022	.104	.053	.019	.072	.037	.013	.042	.022	.008	.014	.007	.003	

C Range: 0 - 360DEG
 C Interval: 10.0DEG
 Test Speed: HIGH
 Temperature:25.3DEG
 Operators:LQL
 Test Date:01 August 2023

g Range: 0 - 90DEG
 g Interval: 2.0DEG
 Test System:EVERFINE GO-2000B_V1 SYSTEM V2.0.403
 Humidity:65.0%
 Test Distance:10.365m [K=1.0000]
 Remarks: SMD MINI-6-350

UGR(Unified Glare Rating) Table

Test:U:230.72V I:0.0328A P:4.1682W PF:0.5489 Freq:49.99Hz Lamp Flux:110.569x1 lm										
NAME: Walloo 14 3.2W CCT LED outdoor wall light					TYPE:			WEIGHT:		
SPEC.:					DIM.:			SERIAL No.:		
MFR.: CG LIGHTING					SUR.:			Shielding Angle:		
ceiling/cavity	0.7	0.7	0.5	0.5	0.3	0.7	0.7	0.5	0.5	0.3
walls	0.5	0.3	0.5	0.3	0.3	0.5	0.3	0.5	0.3	0.3
working plane	0.2	0.2	0.2	0.2	0.2	0.2	0.2	0.2	0.2	0.2
Room dimensions	Viewed crosswise					Viewed endwise				
x = 2H y = 2H	21.9	23.5	22.2	23.7	23.9	23.5	25.1	23.8	25.3	25.5
3H	22.6	24.1	22.9	24.3	24.6	23.5	25.0	23.8	25.2	25.5
4H	22.8	24.1	23.1	24.4	24.7	23.5	24.9	23.8	25.2	25.4
6H	22.8	24.1	23.1	24.3	24.6	23.5	24.8	23.9	25.1	25.4
8H	22.7	24.0	23.1	24.3	24.6	23.6	24.8	23.9	25.1	25.4
12H	22.7	23.9	23.0	24.2	24.5	23.6	24.8	24.0	25.1	25.4
4H 2H	23.1	24.5	23.4	24.8	25.0	24.1	25.5	24.4	25.7	26.0
3H	24.4	25.6	24.7	25.9	26.2	24.2	25.4	24.5	25.7	26.0
4H	24.8	25.9	25.2	26.2	26.6	24.2	25.3	24.6	25.6	26.0
6H	25.1	26.0	25.5	26.4	26.7	24.3	25.3	24.7	25.6	26.0
8H	25.1	26.0	25.5	26.3	26.7	24.4	25.3	24.8	25.6	26.0
12H	25.1	25.9	25.5	26.3	26.7	24.5	25.3	24.9	25.7	26.1
8H 4H	24.9	25.8	25.3	26.2	26.5	24.4	25.3	24.8	25.7	26.1
6H	25.3	26.1	25.8	26.5	26.9	24.6	25.3	25.0	25.7	26.1
8H	25.5	26.1	25.9	26.5	27.0	24.7	25.4	25.2	25.8	26.2
12H	25.5	26.1	26.0	26.5	27.0	24.9	25.5	25.4	25.9	26.4
12H 4H	24.9	25.7	25.3	26.1	26.5	24.4	25.2	24.8	25.6	26.0
6H	25.3	26.0	25.8	26.4	26.8	24.6	25.3	25.1	25.7	26.1
8H	25.5	26.0	26.0	26.5	27.0	24.8	25.3	25.3	25.8	26.3
Variations with the observer position at spacings:										
S = 1.0H	+ 0.5 / - 0.3					+ 0.4 / - 0.5				
1.5H	+ 1.0 / - 1.3					+ 0.6 / - 1.1				
2.0H	+ 1.6 / - 3.0					+ 1.1 / - 2.3				

CIE Pub.117, 110.6 lm Total Lamp Luminous Flux Correct (8log(F/F0) = -7.7)

C Range: 0 - 360DEG
 C Interval: 10.0DEG
 Test Speed: HIGH
 Temperature:25.3DEG
 Operators:LQL
 Test Date:01 August 2023

g Range: 0 - 90DEG
 g Interval: 2.0DEG
 Test System:EVERFINE GO-2000B_V1 SYSTEM V2.0.403
 Humidity:65.0%
 Test Distance:10.365m [K=1.0000]
 Remarks: SMD MINI-6-350

UTILIZATION FACTORS TABLE

Test:U:230.72V I:0.0328A P:4.1682W PF:0.5489 Freq:49.99Hz Lamp Flux:110.569x1 lm		
NAME: Walloo 14 3.2W CCT LED outdoor wall light	TYPE:	WEIGHT:
SPEC.:	DIM.:	SERIAL No.:
MFR.: CG LIGHTING	SUR.:	Shielding Angle:

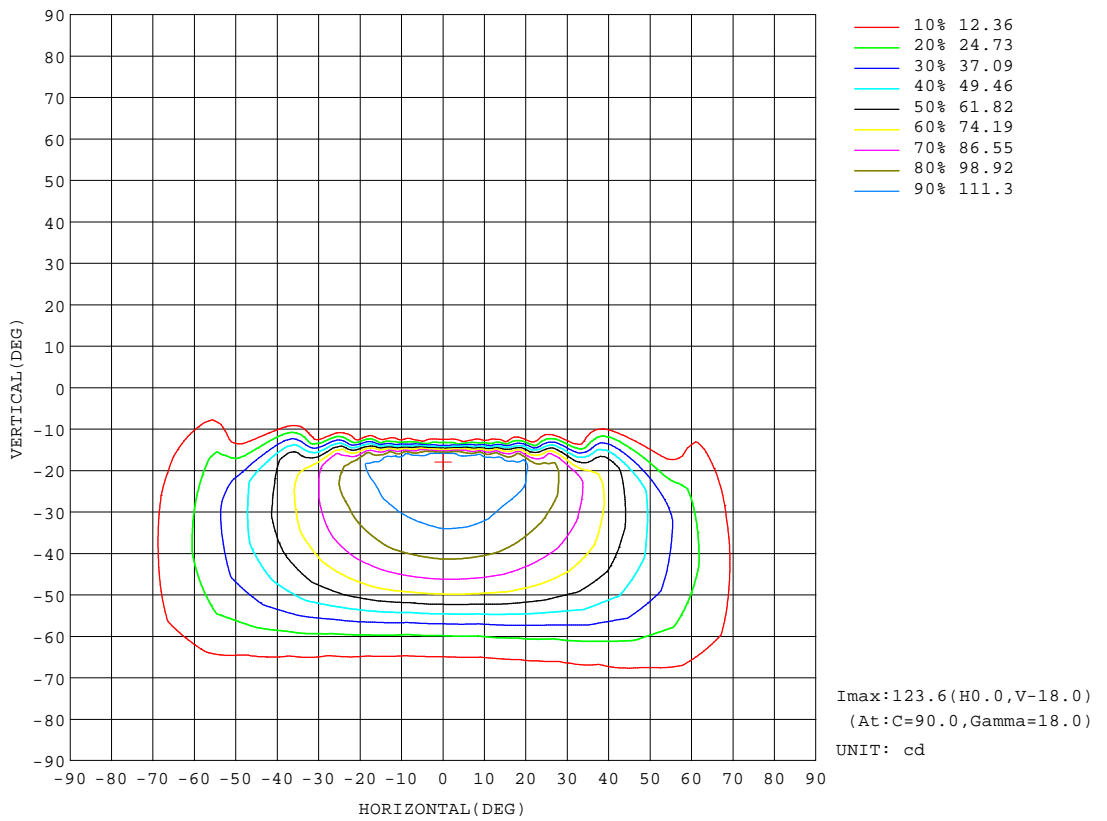
REFLECTANCE										
Ceiling	0.8	0.8	0.8	0.7	0.7	0.7	0.5	0.5	0.5	0
Walls	0.7	0.5	0.3	0.7	0.5	0.3	0.7	0.5	0.3	0
Working plane	0.2	0.2	0.2	0.2	0.2	0.2	0.2	0.2	0.2	0
ROOM INDEX	UTILIZATION FACTORS(PERCENT) $k(RI) \times RCR = 5$									
k = 0.60	54	42	35	53	42	35	52	41	34	28
0.80	65	53	46	64	53	46	63	52	45	38
1.00	75	64	56	74	63	56	72	65	56	48
1.25	83	72	65	81	72	65	79	70	64	57
1.50	88	78	71	86	77	71	83	76	70	62
2.00	95	87	81	94	86	80	90	84	78	71
2.50	99	92	86	97	90	85	93	87	83	75
3.00	103	96	90	100	94	89	96	91	87	79
4.00	106	101	96	104	99	95	100	96	92	83
5.00	109	104	100	106	102	98	102	98	95	86
ROOM INDEX	UF(total)									Direct
According to DIN EN 13032-2 2004			Suspended				SHRNOM = 1.25			

C Range: 0 - 360DEG
 C Interval: 10.0DEG
 Test Speed: HIGH
 Temperature:25.3DEG
 Operators:LQL
 Test Date:01 August 2023

g Range: 0 - 90DEG
 Interval: 2.0DEG
 Test System:EVERFINE GO-2000B_V1 SYSTEM V2.0.403
 Humidity:65.0%
 Test Distance:10.365m [K=1.0000]
 Remarks: SMD MINI-6-350

ISOCANDELA DIAGRAM

Test:U:230.72V I:0.0328A P:4.1682W PF:0.5489 Freq:49.99Hz Lamp Flux:110.569x1 lm		
NAME: Walloo 14 3.2W CCT LED outdoor wall light	TYPE:	WEIGHT:
SPEC.:	DIM.:	SERIAL No.:
MFR.: CG LIGHTING	SUR.:	Shielding Angle:

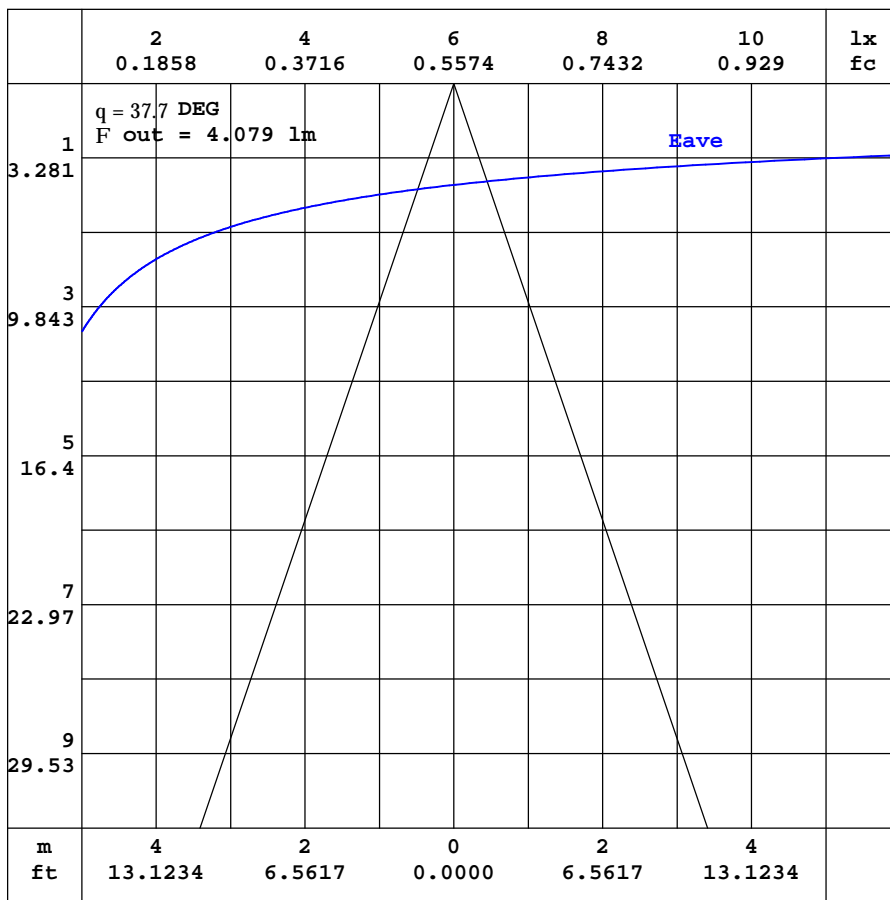


C Range: 0 - 360DEG
 C Interval: 10.0DEG
 Test Speed: HIGH
 Temperature:25.3DEG
 Operators:LQL
 Test Date:01 August 2023

Range: 0 - 90DEG
 Interval: 2.0DEG
 Test System:EVERFINE GO-2000B_V1 SYSTEM V2.0.403
 Humidity:65.0%
 Test Distance:10.365m [K=1.0000]
 Remarks: SMD MINI-6-350

AAI CURVES

Test:U:230.72V I:0.0328A P:4.1682W PF:0.5489 Freq:49.99Hz Lamp Flux:110.569x1 lm		
NAME: Walloo 14 3.2W CCT LED outdoor wall light	TYPE:	WEIGHT:
SPEC.:	DIM.:	SERIAL No.:
MFR.: CG LIGHTING	SUR.:	Shielding Angle:



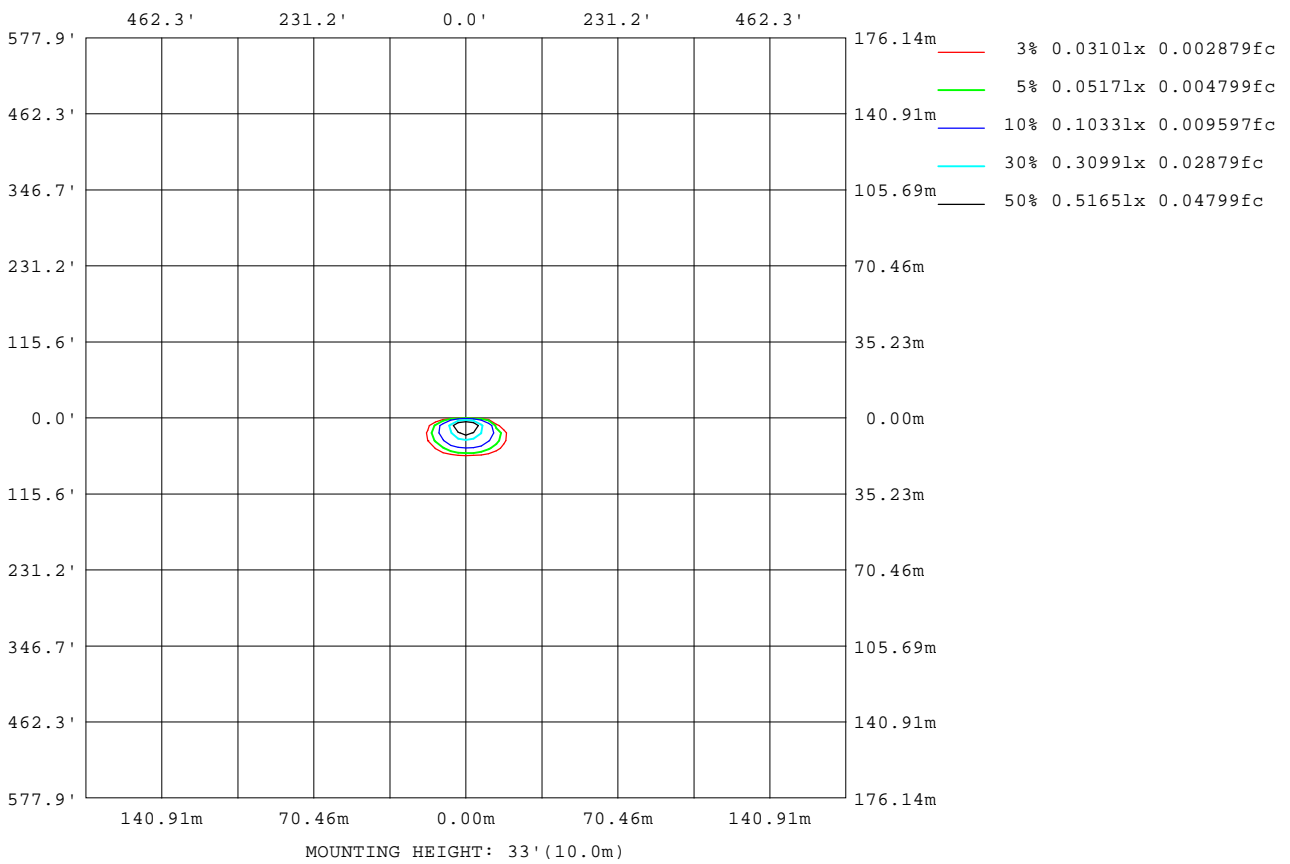
Note: The Curves indicate the illuminated area and the average illumination when the luminaire is at different distance.

C Range: 0 - 360DEG
 C Interval: 10.0DEG
 Test Speed: HIGH
 Temperature: 25.3DEG
 Operators: LQL
 Test Date: 01 August 2023

Range: 0 - 90DEG
 Interval: 2.0DEG
 Test System: EVERFINE GO-2000B_V1 SYSTEM V2.0.403
 Humidity: 65.0%
 Test Distance: 10.365m [K=1.0000]
 Remarks: SMD MINI-6-350

ISOLUX DIAGRAM

Test:U:230.72V I:0.0328A P:4.1682W PF:0.5489 Freq:49.99Hz Lamp Flux:110.569x1 lm		
NAME: Walloo 14 3.2W CCT LED outdoor wall light	TYPE:	WEIGHT:
SPEC.:	DIM.:	SERIAL No.:
MFR.: CG LIGHTING	SUR.:	Shielding Angle:



C Range: 0 - 360DEG
 C Interval: 10.0DEG
 Test Speed: HIGH
 Temperature: 25.3DEG
 Operators: LQL
 Test Date: 01 August 2023

g Range: 0 - 90DEG
 Interval: 2.0DEG
 Test System: EVERFINE GO-2000B_V1 SYSTEM V2.0.403
 Humidity: 65.0%
 Test Distance: 10.365m [K=1.0000]
 Remarks: SMD MINI-6-350

LED Avg.L Report

Test:U:230.72V I:0.0328A P:4.1682W PF:0.5489 Freq:49.99Hz Lamp Flux:110.569x1 lm		
NAME: Walloo 14 3.2W CCT LED outdoor wall light	TYPE:	WEIGHT:
SPEC.:	DIM.:	SERIAL No.:
MFR.: CG LIGHTING	SUR.:	Shielding Angle:

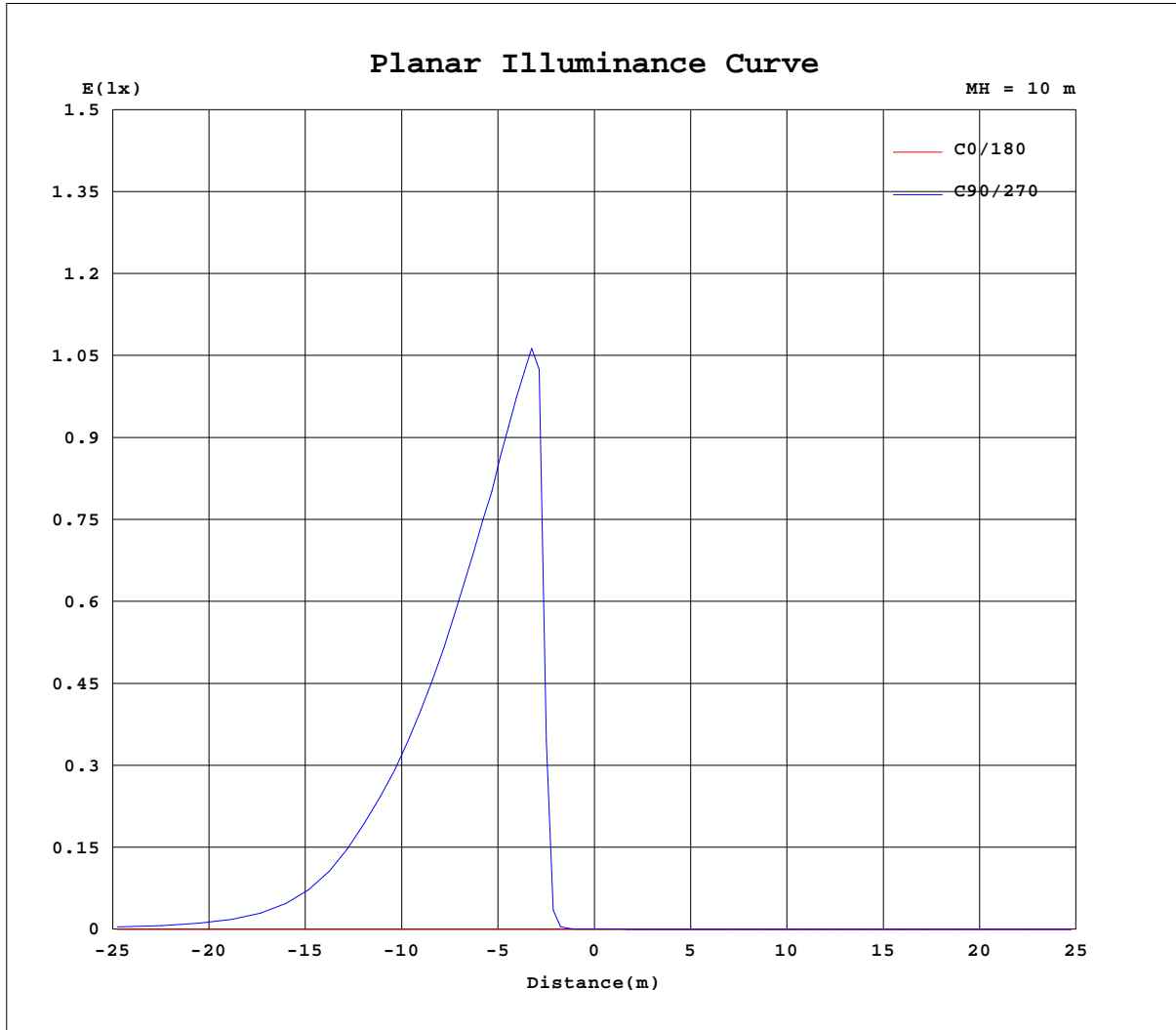
AvgL	cd/m2
L_0~180(65)av	1
L_0~180(75)av	2
L_0~180(85)av	6
L_90~270(65)av	144
L_90~270(75)av	113
L_90~270(85)av	224
L_45(65)av	399
L_45(75)av	166
L_45(85)av	178

Standard: GB/T 29293-2012

C Range: 0 - 360DEG
 C Interval: 10.0DEG
 Test Speed: HIGH
 Temperature:25.3DEG
 Operators:LQL
 Test Date:01 August 2023

g Range: 0 - 90DEG
 g Interval: 2.0DEG
 Test System:EVERFINE GO-2000B_V1 SYSTEM V2.0.403
 Humidity:65.0%
 Test Distance:10.365m [K=1.0000]
 Remarks: SMD MINI-6-350

Planar Illuminance Curve



C Range: 0 - 360DEG
 C Interval: 10.0DEG
 Test Speed: HIGH
 Temperature: 25.3DEG
 Operators: LQL
 Test Date: 01 August 2023

Page Range: 0 - 90DEG
 Interval: 2.0DEG
 Test System: EVERFINE GO-2000B_V1 SYSTEM V2.0.403
 Humidity: 65.0%
 Test Distance: 10.365m [K=1.0000]
 Remarks: SMD MINI-6-350

