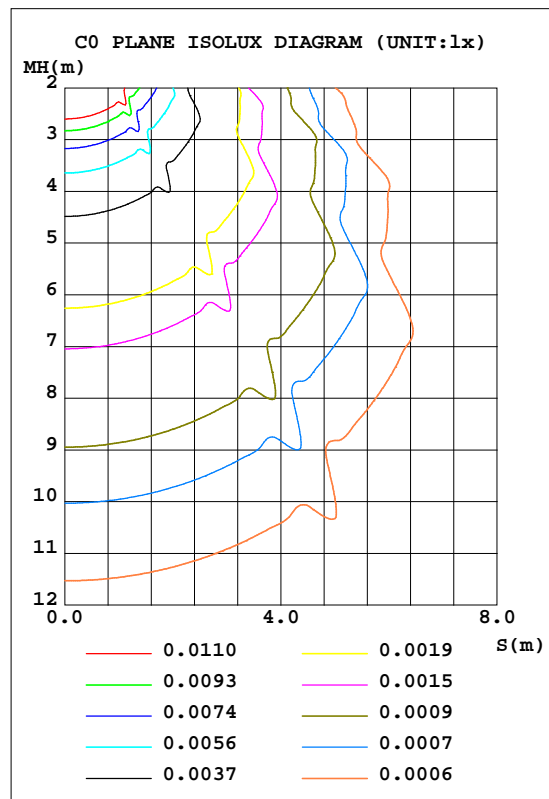
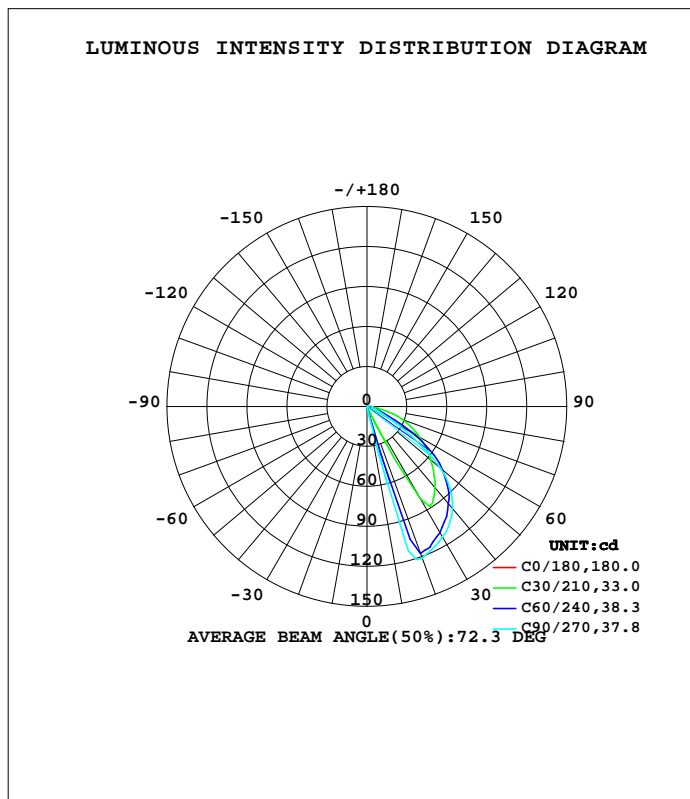


LUMINAIRE PHOTOMETRIC TEST REPORT

Test:U:230.72V I:0.0327A P:4.1561W PF:0.5489 Freq:49.99Hz Lamp Flux:108.98lx1 lm		
NAME: Walloo 14 3.2W CCT LED outdoor wall light	TYPE:	WEIGHT:
SPEC.:	DIM.:	SERIAL No.:
MFR.: CG LIGHTING	SUR.:	Shielding Angle:

DATA OF LAMP		PHOTOMETRIC DATA				Eff: 26.22 lm/W
MODEL	2198ACCT-Q5	I <sub>max</sub> (cd)	121.2	S/MH(C0/180)	1.39	
NOMINAL POWER(W)		LOR(%)	100.0	S/MH(C90/270)	0.53	
RATED VOLTAGE(V)	230.0	TOTAL FLUX(lm)	108.98	h UP, DN(C0-180)	0.0,99.8	
NOMINAL FLUX(lm)	108.981	CIE CLASS	DIRECT	h UP, DN(C180-360)	0.0,0.2	
LAMPS INSIDE	1	h up(%)	0.0	CIBSE SHR NOM	0.00	
TEST VOLTAGE(V)	230.0	h down(%)	100.0	CIBSE SHR MAX	1.00	



C Range: 0 - 360DEG  
 C Interval: 10.0DEG  
 Test Speed: HIGH  
 Temperature:25.3DEG  
 Operators:LQL  
 Test Date:01 August 2023

Range: 0 - 90DEG  
 Interval: 2.0DEG  
 Test System:EVERFINE GO-2000B\_V1 SYSTEM V2.0.403  
 Humidity:65.0%  
 Test Distance:10.365m [K=1.0000]  
 Remarks: SMD MINI-6-350

ZONAL FLUX DIAGRAM

ZONAL FLUX DIAGRAM:

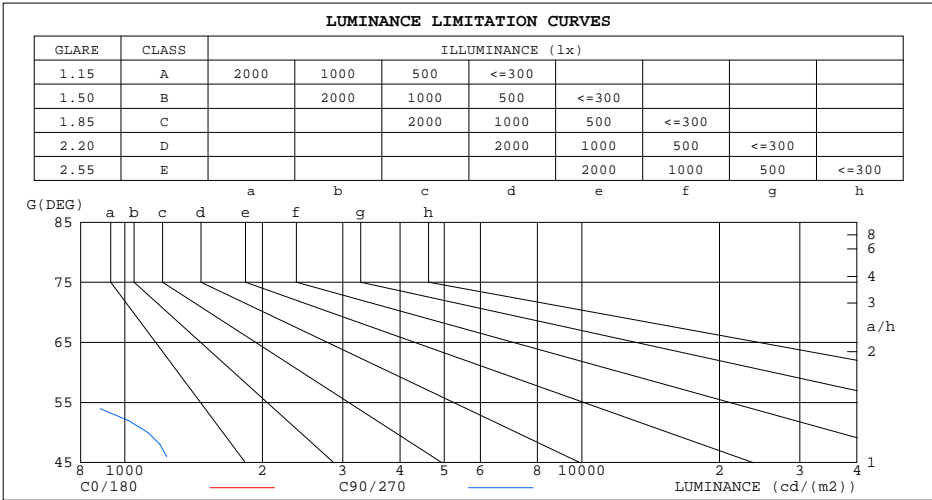
g	C0	C45	C90	C135	C180	C225	C270	C315	g	F zone	F total	%lum,lamp
10	0.0744	0.1118	0.5631	0.1864	0.0670	0.0484	0.0596	0.0670	0- 10	0.0090	0.0090	0.01,0.01
20	0.0744	52.27	121.2	60.71	0.0670	0.0335	0.0298	0.0447	10- 20	3.967	3.976	3.65,3.65
30	0.0670	105.0	113.1	107.1	0.0670	0.0186	0.0149	0.0298	20- 30	16.40	20.38	18.7,18.7
40	0.0670	88.31	99.82	92.08	0.0669	0.0186	0.0149	0.0298	30- 40	23.75	44.12	40.5,40.5
50	0.0521	69.82	72.30	73.89	0.0595	0.0186	0.0223	0.0372	40- 50	25.92	70.05	64.3,64.3
60	0.0447	47.40	24.24	49.03	0.0670	0.0223	0.0298	0.0335	50- 60	20.75	90.80	83.3,83.3
70	0.0373	19.34	7.648	17.51	0.0671	0.0372	0.0298	0.0484	60- 70	11.49	102.3	93.9,93.9
80	0.0372	4.581	4.576	4.428	0.0744	0.1302	0.0298	0.1116	70- 80	4.928	107.2	98.4,98.4
90	0.0372	2.114	3.238	2.389	0.1042	0.1675	0.1414	0.2047	80- 90	1.770	109.0	100,100
100									90-100			
110									100-110			
120									110-120			
130									120-130			
140									130-140			
150									140-150			
160									150-160			
170									160-170			
180									170-180			
DEG	LUMINOUS INTENSITY:cd									UNIT:lm		

C Range: 0 - 360DEG  
 C Interval: 10.0DEG  
 Test Speed: HIGH  
 Temperature:25.3DEG  
 Operators:LQL  
 Test Date:01 August 2023

g Range: 0 - 90DEG  
 Interval: 2.0DEG  
 Test System:EVERFINE GO-2000B\_V1 SYSTEM V2.0.403  
 Humidity:65.0%  
 Test Distance:10.365m [K=1.0000]  
 Remarks: SMD MINI-6-350

LUMINANCE LIMITATION CURVES

Test:U:230.72V I:0.0327A P:4.1561W PF:0.5489 Freq:49.99Hz Lamp Flux:108.981x1 lm		
NAME: Walloo 14 3.2W CCT LED outdoor wall light	TYPE:	WEIGHT:
SPEC.:	DIM.:	SERIAL No.:
MFR.: CG LIGHTING	SUR.:	Shielding Angle:



LUMINANCE cd/(m2)		
G( DEG)	C0/180	C90/270
85	4	451
80	2	264
75	1	233
70	1	224
65	1	324
60	1	485
55	1	905
50	1	1125
45	1	1291

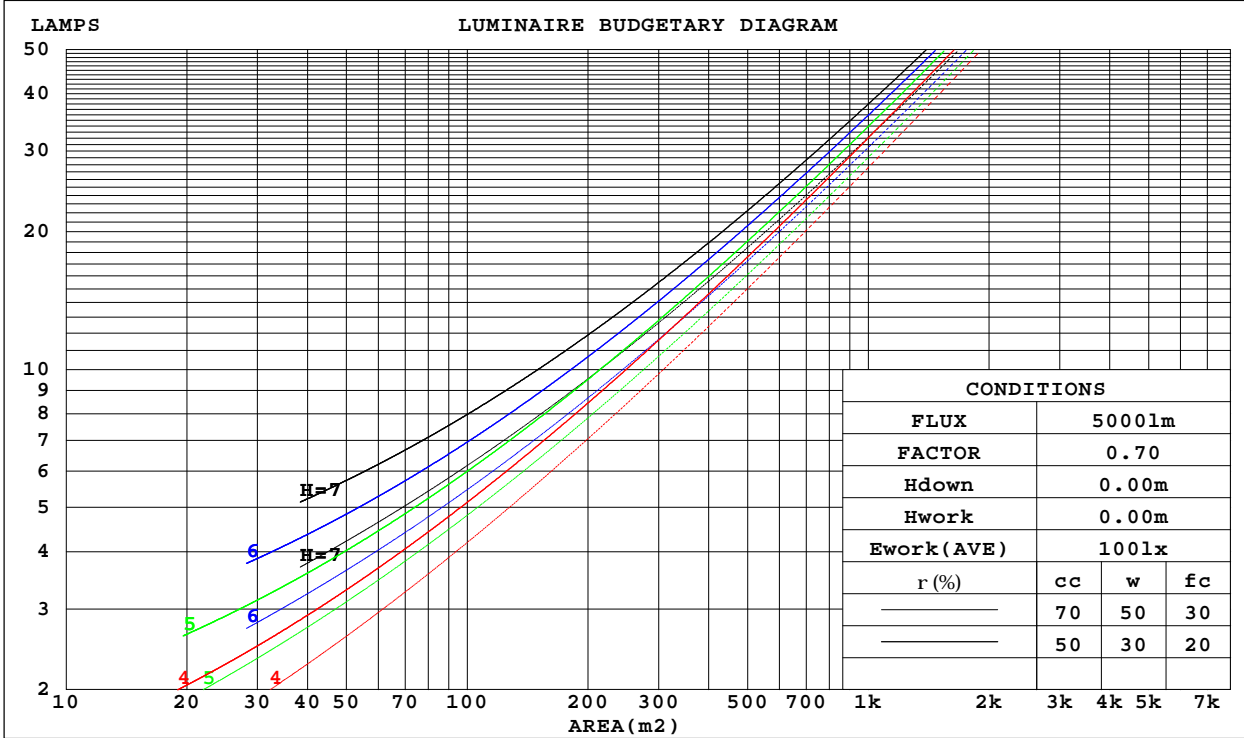
C Range: 0 - 360DEG  
 C Interval: 10.0DEG  
 Test Speed: HIGH  
 Temperature:25.3DEG  
 Operators:LQL  
 Test Date:01 August 2023

G Range: 0 - 90DEG  
 G Interval: 2.0DEG  
 Test System:EVERFINE GO-2000B\_V1 SYSTEM V2.0.403  
 Humidity:65.0%  
 Test Distance:10.365m [K=1.0000]  
 Remarks: SMD MINI-6-350

CU AND LUMINAIRE BUDGETARY ESTIMATE DIAGRAM

Test:U:230.72V I:0.0327A P:4.1561W PF:0.5489 Freq:49.99Hz Lamp Flux:108.98lx1 lm		
NAME: Walloo 14 3.2W CCT LED outdoor wall light	TYPE:	WEIGHT:
SPEC.:	DIM.:	SERIAL No.:
MFR.: CG LIGHTING	SUR.:	Shielding Angle:

r <sub>cc</sub>	80%			70%			50%			30%			10%			0
r <sub>w</sub>	50%	30%	10%	50%	30%	10%	50%	30%	10%	50%	30%	10%	50%	30%	10%	0
r <sub>fc</sub>	20%			20%			20%			20%			20%			0
RCR	RCR:Room Cavity Ratio						Coefficients of Utilization(CU)									
0.0	1.19	1.19	1.19	1.16	1.16	1.16	1.11	1.11	1.11	1.06	1.06	1.06	1.02	1.02	1.02	.00
1.0	1.04	.00	.96	1.02	.98	.95	.98	.94	.92	.94	.91	.89	.90	.88	.86	.84
2.0	.91	.84	.78	.89	.82	.77	.85	.80	.75	.82	.77	.73	.79	.75	.72	.70
3.0	.79	.71	.64	.77	.70	.63	.74	.68	.62	.71	.66	.61	.69	.64	.60	.58
4.0	.69	.60	.53	.68	.59	.53	.65	.58	.52	.63	.56	.51	.61	.55	.51	.48
5.0	.61	.52	.45	.60	.51	.44	.58	.50	.44	.56	.49	.43	.54	.48	.43	.41
6.0	.54	.45	.38	.53	.44	.38	.51	.43	.37	.49	.42	.37	.48	.42	.37	.35
7.0	.48	.39	.33	.47	.39	.32	.46	.38	.32	.44	.37	.32	.43	.36	.32	.30
8.0	.43	.34	.28	.42	.34	.28	.41	.33	.28	.40	.33	.28	.39	.32	.27	.25
9.0	.39	.30	.24	.38	.30	.24	.37	.30	.24	.36	.29	.24	.35	.29	.24	.22
10.0	.35	.27	.21	.35	.27	.21	.34	.26	.21	.33	.26	.21	.32	.26	.21	.19



C Range: 0 - 360DEG  
 C Interval: 10.0DEG  
 Test Speed: HIGH  
 Temperature:25.3DEG  
 Operators:LQL  
 Test Date:01 August 2023

Range: 0 - 90DEG  
 Interval: 2.0DEG  
 Test System:EVERFINE GO-2000B\_V1 SYSTEM V2.0.403  
 Humidity:65.0%  
 Test Distance:10.365m [K=1.0000]  
 Remarks: SMD MINI-6-350

WEC AND CCEC

Test:U:230.72V I:0.0327A P:4.1561W PF:0.5489 Freq:49.99Hz Lamp Flux:108.981x1 lm		
NAME: Walloo 14 3.2W CCT LED outdoor wall light	TYPE:	WEIGHT:
SPEC.:	DIM.:	SERIAL No.:
MFR.: CG LIGHTING	SUR.:	Shielding Angle:

rcc	80%			70%			50%			30%			10%			0
rw	50%	30%	10%	50%	30%	10%	50%	30%	10%	50%	30%	10%	50%	30%	10%	0
rfc	20%			20%			20%			20%			20%			0
RCR	RCR:Room Cavity Ratio						Wall Exitance Coefficients(WEC)									
0.0																
1.0	.304	.173	.055	.297	.169	.054	.284	.163	.052	.272	.157	.050	.260	.151	.049	
2.0	.291	.160	.049	.285	.157	.048	.273	.152	.047	.262	.147	.046	.252	.143	.045	
3.0	.273	.145	.044	.268	.143	.043	.257	.139	.042	.248	.136	.042	.239	.132	.041	
4.0	.255	.132	.039	.250	.131	.039	.241	.128	.038	.232	.125	.038	.224	.122	.037	
5.0	.238	.121	.035	.233	.120	.035	.225	.117	.034	.217	.115	.034	.210	.112	.034	
6.0	.222	.111	.032	.218	.110	.032	.210	.108	.031	.203	.106	.031	.197	.104	.031	
7.0	.207	.102	.029	.204	.102	.029	.197	.100	.029	.191	.098	.028	.185	.096	.028	
8.0	.194	.095	.027	.191	.094	.027	.185	.092	.026	.180	.091	.026	.174	.089	.026	
9.0	.182	.088	.025	.180	.088	.025	.174	.086	.024	.169	.085	.024	.164	.084	.024	
10.0	.172	.082	.023	.169	.082	.023	.164	.081	.023	.160	.079	.023	.155	.078	.022	

rcc	80%			70%			50%			30%			10%			0
rw	50%	30%	10%	50%	30%	10%	50%	30%	10%	50%	30%	10%	50%	30%	10%	0
rfc	20%			20%			20%			20%			20%			0
RCR	RCR:Room Cavity Ratio						Ceiling Cavity Exitance Coefficients(CCEC)									
0.0	.190	.190	.190	.163	.163	.163	.111	.111	.111	.064	.064	.064	.020	.020	.020	
1.0	.180	.156	.135	.154	.134	.116	.105	.092	.080	.061	.053	.047	.019	.017	.015	
2.0	.172	.132	.098	.147	.114	.085	.101	.079	.059	.058	.046	.035	.019	.015	.011	
3.0	.165	.114	.074	.142	.099	.064	.097	.069	.045	.056	.040	.026	.018	.013	.009	
4.0	.158	.101	.057	.136	.087	.050	.093	.061	.035	.054	.036	.021	.017	.012	.007	
5.0	.152	.091	.046	.130	.079	.040	.090	.055	.028	.052	.032	.017	.017	.011	.006	
6.0	.145	.083	.038	.125	.072	.033	.086	.050	.023	.050	.029	.014	.016	.010	.005	
7.0	.139	.076	.032	.119	.066	.028	.082	.046	.020	.048	.027	.012	.015	.009	.004	
8.0	.132	.070	.028	.114	.061	.024	.079	.043	.017	.046	.025	.010	.015	.008	.003	
9.0	.127	.065	.024	.109	.057	.021	.076	.040	.015	.044	.024	.009	.014	.008	.003	
10.0	.121	.061	.022	.104	.053	.019	.072	.037	.013	.042	.022	.008	.014	.007	.003	

C Range: 0 - 360DEG  
 C Interval: 10.0DEG  
 Test Speed: HIGH  
 Temperature:25.3DEG  
 Operators:LQL  
 Test Date:01 August 2023

g Range: 0 - 90DEG  
 g Interval: 2.0DEG  
 Test System:EVERFINE GO-2000B\_V1 SYSTEM V2.0.403  
 Humidity:65.0%  
 Test Distance:10.365m [K=1.0000]  
 Remarks: SMD MINI-6-350

UGR(Unified Glare Rating) Table

Test:U:230.72V I:0.0327A P:4.1561W PF:0.5489 Freq:49.99Hz Lamp Flux:108.98lx1 lm										
NAME: Walloo 14 3.2W CCT LED outdoor wall light					TYPE:			WEIGHT:		
SPEC.:					DIM.:			SERIAL No.:		
MFR.: CG LIGHTING					SUR.:			Shielding Angle:		
ceiling/cavity	0.7	0.7	0.5	0.5	0.3	0.7	0.7	0.5	0.5	0.3
walls	0.5	0.3	0.5	0.3	0.3	0.5	0.3	0.5	0.3	0.3
working plane	0.2	0.2	0.2	0.2	0.2	0.2	0.2	0.2	0.2	0.2
Room dimensions	Viewed crosswise					Viewed endwise				
x = 2H y = 2H	21.4	23.0	21.7	23.2	23.5	23.3	24.9	23.6	25.1	25.3
3H	22.1	23.6	22.4	23.8	24.1	23.3	24.8	23.6	25.0	25.3
4H	22.3	23.6	22.6	23.9	24.2	23.3	24.7	23.7	25.0	25.2
6H	22.3	23.6	22.6	23.8	24.1	23.4	24.7	23.7	24.9	25.2
8H	22.2	23.5	22.6	23.8	24.1	23.4	24.7	23.8	24.9	25.2
12H	22.2	23.4	22.5	23.7	24.0	23.5	24.7	23.8	25.0	25.3
4H 2H	22.6	24.0	22.9	24.3	24.5	23.8	25.2	24.1	25.5	25.7
3H	23.9	25.1	24.2	25.4	25.7	23.9	25.1	24.3	25.4	25.7
4H	24.3	25.4	24.7	25.7	26.1	24.0	25.1	24.3	25.4	25.7
6H	24.6	25.5	25.0	25.9	26.3	24.1	25.0	24.5	25.4	25.7
8H	24.6	25.5	25.0	25.9	26.2	24.2	25.0	24.6	25.4	25.8
12H	24.6	25.4	25.0	25.8	26.2	24.3	25.1	24.7	25.5	25.9
8H 4H	24.4	25.3	24.9	25.7	26.1	24.1	25.0	24.6	25.4	25.8
6H	24.9	25.6	25.3	26.0	26.4	24.3	25.0	24.8	25.5	25.9
8H	25.0	25.7	25.5	26.1	26.5	24.5	25.1	24.9	25.5	26.0
12H	25.1	25.6	25.6	26.1	26.6	24.7	25.3	25.2	25.7	26.2
12H 4H	24.4	25.2	24.8	25.6	26.0	24.2	25.0	24.6	25.4	25.8
6H	24.9	25.5	25.3	26.0	26.4	24.3	25.0	24.8	25.4	25.9
8H	25.0	25.6	25.5	26.0	26.5	24.5	25.1	25.0	25.5	26.0
Variations with the observer position at spacings:										
S = 1.0H	+ 0.5 / - 0.3					+ 0.4 / - 0.6				
1.5H	+ 1.0 / - 1.2					+ 0.6 / - 1.0				
2.0H	+ 1.5 / - 2.9					+ 1.2 / - 2.3				

CIE Pub.117, 109.0 lm Total Lamp Luminous Flux Correct (8log(F/F0) = -7.7)

C Range: 0 - 360DEG  
 C Interval: 10.0DEG  
 Test Speed: HIGH  
 Temperature:25.3DEG  
 Operators:LQL  
 Test Date:01 August 2023

g Range: 0 - 90DEG  
 g Interval: 2.0DEG  
 Test System:EVERFINE GO-2000B\_V1 SYSTEM V2.0.403  
 Humidity:65.0%  
 Test Distance:10.365m [K=1.0000]  
 Remarks: SMD MINI-6-350

UTILIZATION FACTORS TABLE

Test:U:230.72V I:0.0327A P:4.1561W PF:0.5489 Freq:49.99Hz Lamp Flux:108.98lx1 lm		
NAME: Walloo 14 3.2W CCT LED outdoor wall light	TYPE:	WEIGHT:
SPEC.:	DIM.:	SERIAL No.:
MFR.: CG LIGHTING	SUR.:	Shielding Angle:

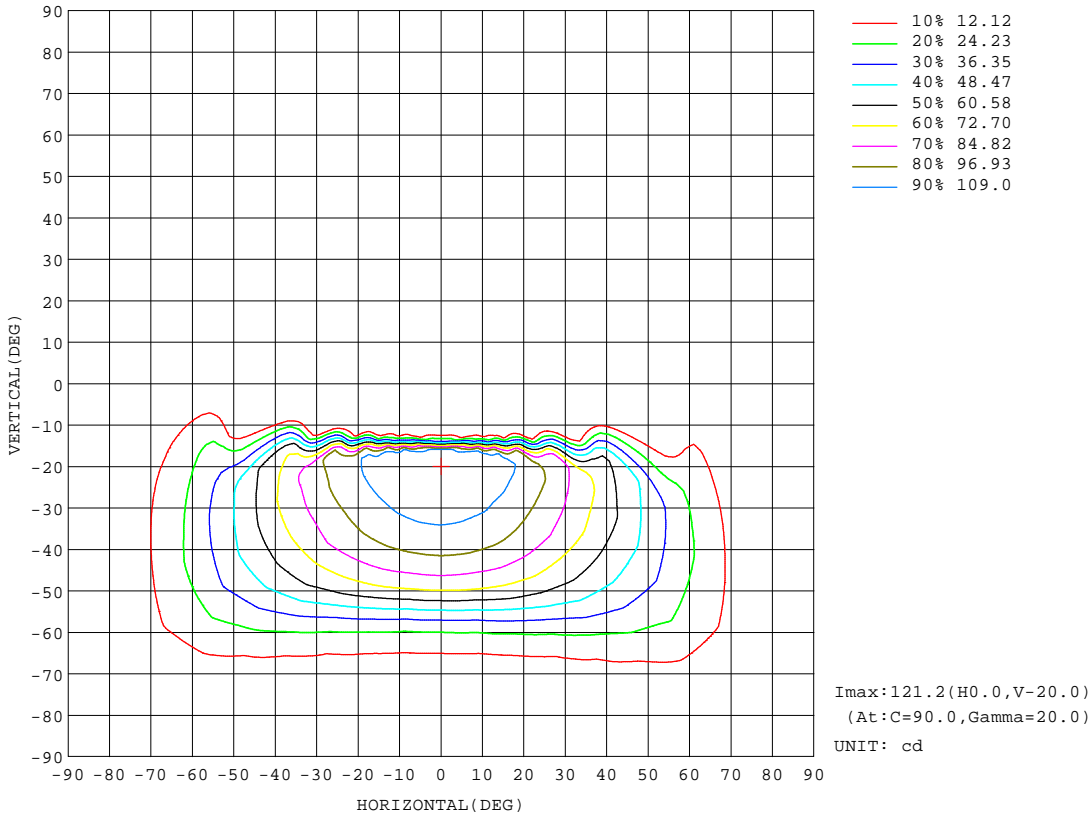
REFLECTANCE										
Ceiling	0.8	0.8	0.8	0.7	0.7	0.7	0.5	0.5	0.5	0
Walls	0.7	0.5	0.3	0.7	0.5	0.3	0.7	0.5	0.3	0
Working plane	0.2	0.2	0.2	0.2	0.2	0.2	0.2	0.2	0.2	0
ROOM INDEX	UTILIZATION FACTORS(PERCENT) $k(RI) \times RCR = 5$									
k = 0.60	54	42	35	53	42	34	52	41	34	28
0.80	65	53	45	64	53	45	62	52	45	38
1.00	75	64	56	74	63	56	71	65	55	48
1.25	83	72	65	81	71	65	79	70	64	56
1.50	88	78	71	86	77	71	83	75	69	62
2.00	95	87	80	93	86	80	90	83	78	70
2.50	99	91	85	97	90	85	93	87	83	74
3.00	102	96	90	100	94	89	96	91	87	79
4.00	106	101	96	104	99	95	100	96	92	83
5.00	109	104	100	106	102	98	102	98	95	86
ROOM INDEX	UF(total)									Direct
According to DIN EN 13032-2 2004			Suspended				SHRNOM = 1.25			

C Range: 0 - 360DEG  
 C Interval: 10.0DEG  
 Test Speed: HIGH  
 Temperature:25.3DEG  
 Operators:LQL  
 Test Date:01 August 2023

g Range: 0 - 90DEG  
 Interval: 2.0DEG  
 Test System:EVERFINE GO-2000B\_V1 SYSTEM V2.0.403  
 Humidity:65.0%  
 Test Distance:10.365m [K=1.0000]  
 Remarks: SMD MINI-6-350

ISOCANDELA DIAGRAM

Test:U:230.72V I:0.0327A P:4.1561W PF:0.5489 Freq:49.99Hz Lamp Flux:108.98lx1 lm		
NAME: Walloo 14 3.2W CCT LED outdoor wall light	TYPE:	WEIGHT:
SPEC.:	DIM.:	SERIAL No.:
MFR.: CG LIGHTING	SUR.:	Shielding Angle:



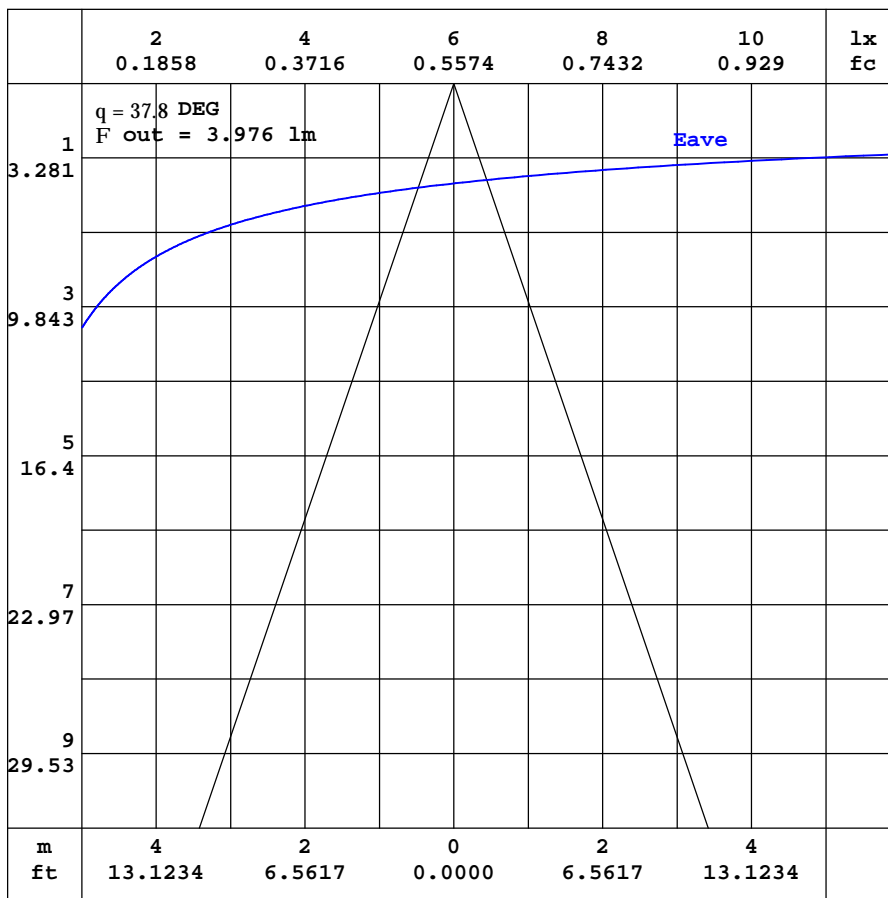
C Range: 0 - 360DEG  
 C Interval: 10.0DEG  
 Test Speed: HIGH  
 Temperature: 25.3DEG  
 Operators: LQL  
 Test Date: 01 August 2023

Range: 0 - 90DEG  
 Interval: 2.0DEG  
 Test System: EVERFINE GO-2000B\_V1 SYSTEM V2.0.403  
 Humidity: 65.0%  
 Test Distance: 10.365m [K=1.0000]  
 Remarks: SMD MINI-6-350



AAI CURVES

Test:U:230.72V I:0.0327A P:4.1561W PF:0.5489 Freq:49.99Hz Lamp Flux:108.981x1 lm		
NAME: Walloo 14 3.2W CCT LED outdoor wall light	TYPE:	WEIGHT:
SPEC.:	DIM.:	SERIAL No.:
MFR.: CG LIGHTING	SUR.:	Shielding Angle:



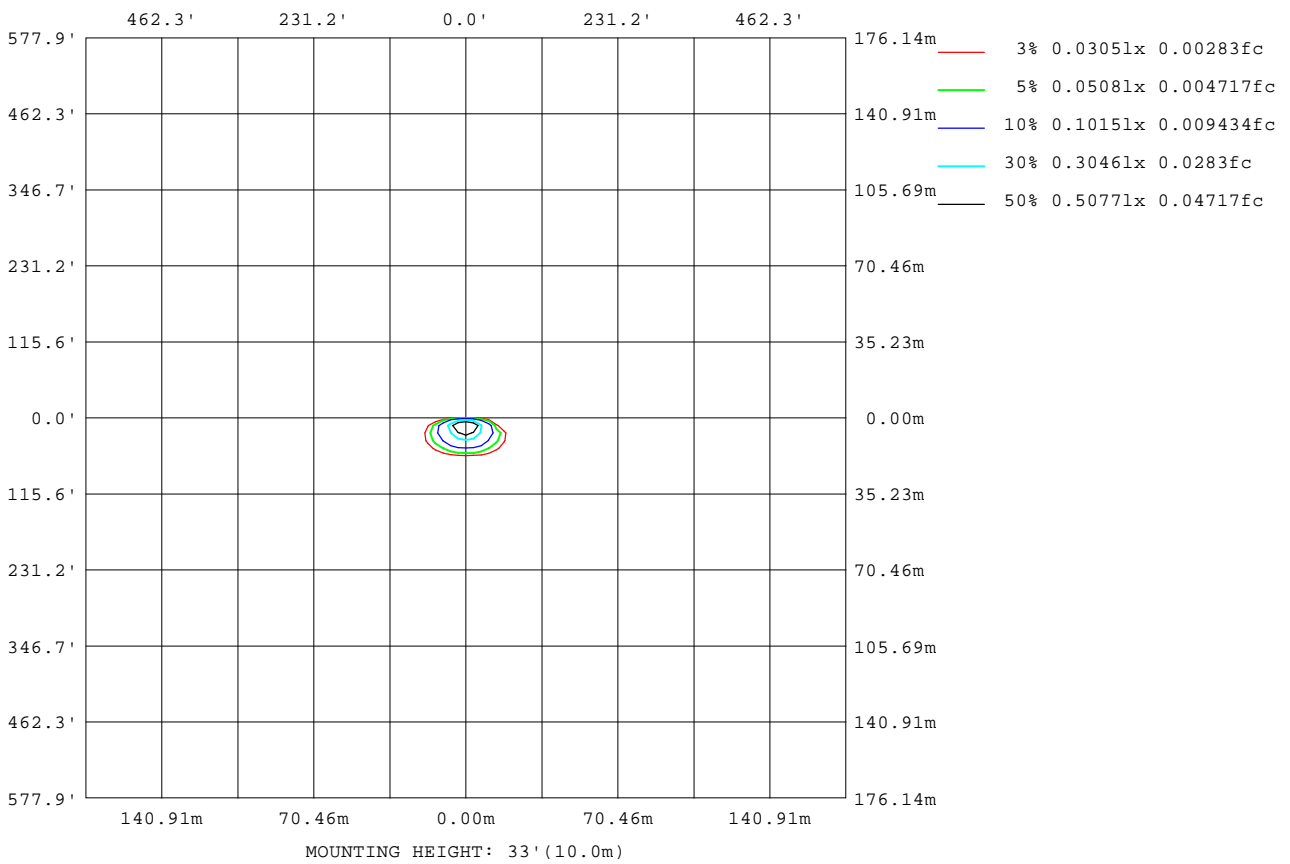
Note: The Curves indicate the illuminated area and the average illumination when the luminaire is at different distance.

C Range: 0 - 360DEG  
 C Interval: 10.0DEG  
 Test Speed: HIGH  
 Temperature: 25.3DEG  
 Operators: LQL  
 Test Date: 01 August 2023

Range: 0 - 90DEG  
 Interval: 2.0DEG  
 Test System: EVERFINE GO-2000B\_V1 SYSTEM V2.0.403  
 Humidity: 65.0%  
 Test Distance: 10.365m [K=1.0000]  
 Remarks: SMD MINI-6-350

ISOLUX DIAGRAM

Test:U:230.72V I:0.0327A P:4.1561W PF:0.5489 Freq:49.99Hz Lamp Flux:108.981x1 lm		
NAME: Walloo 14 3.2W CCT LED outdoor wall light	TYPE:	WEIGHT:
SPEC.:	DIM.:	SERIAL No.:
MFR.: CG LIGHTING	SUR.:	Shielding Angle:



C Range: 0 - 360DEG  
 C Interval: 10.0DEG  
 Test Speed: HIGH  
 Temperature: 25.3DEG  
 Operators: LQL  
 Test Date: 01 August 2023

g Range: 0 - 90DEG  
 Interval: 2.0DEG  
 Test System: EVERFINE GO-2000B\_V1 SYSTEM V2.0.403  
 Humidity: 65.0%  
 Test Distance: 10.365m [K=1.0000]  
 Remarks: SMD MINI-6-350

LED Avg.L Report

Test:U:230.72V I:0.0327A P:4.1561W PF:0.5489 Freq:49.99Hz Lamp Flux:108.981x1 lm		
NAME: Walloo 14 3.2W CCT LED outdoor wall light	TYPE:	WEIGHT:
SPEC.:	DIM.:	SERIAL No.:
MFR.: CG LIGHTING	SUR.:	Shielding Angle:

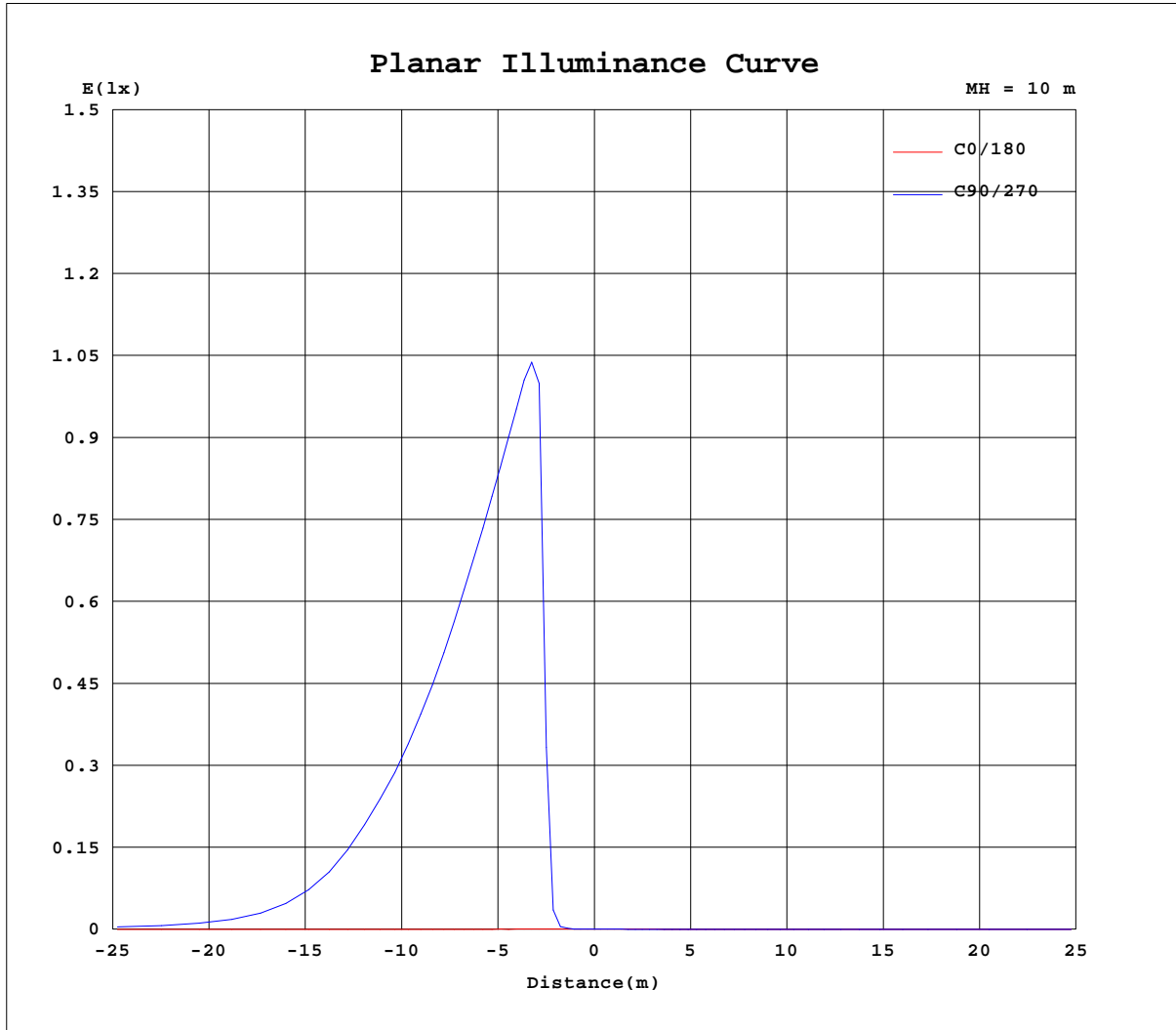
AvgL	cd/m2
L_0~180(65)av	1
L_0~180(75)av	2
L_0~180(85)av	7
L_90~270(65)av	143
L_90~270(75)av	112
L_90~270(85)av	226
L_45(65)av	394
L_45(75)av	166
L_45(85)av	178

Standard: GB/T 29293-2012

C Range: 0 - 360DEG  
 C Interval: 10.0DEG  
 Test Speed: HIGH  
 Temperature:25.3DEG  
 Operators:LQL  
 Test Date:01 August 2023

g Range: 0 - 90DEG  
 g Interval: 2.0DEG  
 Test System:EVERFINE GO-2000B\_V1 SYSTEM V2.0.403  
 Humidity:65.0%  
 Test Distance:10.365m [K=1.0000]  
 Remarks: SMD MINI-6-350

Planar Illuminance Curve



C Range: 0 - 360DEG  
 C Interval: 10.0DEG  
 Test Speed: HIGH  
 Temperature: 25.3DEG  
 Operators: LQL  
 Test Date: 01 August 2023

Page Range: 0 - 90DEG  
 Interval: 2.0DEG  
 Test System: EVERFINE GO-2000B\_V1 SYSTEM V2.0.403  
 Humidity: 65.0%  
 Test Distance: 10.365m [K=1.0000]  
 Remarks: SMD MINI-6-350

**LUMINOUS DISTRIBUTION INTENSITY DATA**

Test:U:230.72V I:0.0327A P:4.1561W PF:0.5489 Freq:49.99Hz Lamp Flux:108.981x1 lm		
NAME: Walloo 14 3.2W CCT LED outdoor wall light	TYPE:	WEIGHT:
SPEC.:	DIM.:	SERIAL No.:
MFR.: CG LIGHTING	SUR.:	Shielding Angle:

Table--1

UNIT: cd

C(DEG) g (DEG)	0	10	20	30	40	50	60	70	80	90	100	110	120	130	140	150	160	170	180
0	0.07	0.07	0.03	0.08	0.03	0.08	0.02	0.07	0.02	0.08	0.03	0.10	0.11	0.12	0.11	0.12	0.10	0.11	0.07
5	0.07	0.07	0.03	0.08	0.04	0.08	0.02	0.10	0.04	0.09	0.03	0.12	0.13	0.14	0.12	0.12	0.10	0.10	0.07
10	0.07	0.07	0.04	0.10	0.07	0.16	0.19	0.27	0.50	0.56	0.56	0.40	0.39	0.25	0.13	0.13	0.11	0.10	0.07
15	0.07	0.07	0.10	0.12	0.21	1.30	4.24	12.0	31.8	36.5	33.1	13.4	4.80	1.66	0.39	0.19	0.12	0.10	0.07
20	0.07	0.08	0.12	0.59	9.92	94.6	117	120	121	121	120	120	118	104	17.3	1.20	0.13	0.10	0.07
25	0.07	0.08	0.18	4.17	97.1	113	116	119	118	118	118	117	116	114	107	8.12	0.38	0.12	0.07
30	0.07	0.09	1.14	79.7	103	107	109	111	112	113	113	112	110	108	106	98.1	2.69	0.14	0.07
35	0.07	0.11	4.44	87.9	96.6	101	104	107	109	109	109	108	106	103	99.7	96.2	17.7	0.20	0.07
40	0.07	0.15	52.0	79.4	85.9	90.8	95.2	98.8	99.7	99.8	99.7	98.9	97.1	94.2	89.9	86.6	70.4	0.32	0.07
45	0.07	0.21	60.0	72.9	79.0	84.7	88.1	90.5	90.9	91.3	90.8	90.7	89.8	87.3	83.6	79.1	66.3	0.78	0.06
50	0.05	0.63	51.4	62.6	68.3	71.4	74.0	74.1	73.2	72.3	72.6	74.9	75.3	75.2	72.6	68.3	55.9	4.50	0.06
55	0.05	1.76	45.4	55.9	60.3	62.9	62.3	59.1	53.7	51.9	52.6	57.6	63.2	66.0	65.5	59.7	49.0	20.2	0.06
60	0.04	12.8	35.8	45.6	48.3	46.5	38.6	31.3	25.6	24.2	24.6	29.6	36.8	46.7	51.4	49.0	39.6	23.8	0.07
65	0.04	14.7	30.8	38.9	39.3	33.4	23.7	17.9	14.5	13.7	14.0	16.8	21.8	31.5	40.1	41.6	33.2	19.8	0.07
70	0.04	10.3	22.7	28.1	23.4	15.3	10.2	8.52	7.78	7.65	7.75	8.38	9.61	13.7	21.3	28.5	24.1	14.1	0.07
75	0.04	7.71	17.5	20.2	13.5	8.48	6.69	6.29	6.09	6.03	6.12	6.29	6.62	7.77	11.6	18.8	18.2	10.5	0.07
80	0.04	4.39	10.0	8.20	4.80	4.36	4.43	4.43	4.58	4.58	4.62	4.67	4.52	4.40	4.45	6.04	9.11	5.79	0.07
85	0.04	2.42	4.56	2.94	2.97	3.27	3.59	3.74	3.90	3.93	3.96	3.83	3.72	3.39	3.03	2.54	2.97	2.85	0.08
90	0.04	0.25	0.68	1.30	1.94	2.29	2.82	3.04	3.22	3.24	3.28	3.17	2.98	2.63	2.14	1.52	0.88	0.36	0.10

C Range: 0 - 360DEG  
C Interval: 10.0DEG  
Test Speed: HIGH  
Temperature:25.3DEG  
Operators:LQL  
Test Date:01 August 2023

Range: 0 - 90DEG  
Interval: 2.0DEG  
Test System:EVERFINE GO-2000B\_V1 SYSTEM V2.0.403  
Humidity:65.0%  
Test Distance:10.365m [K=1.0000]  
Remarks: SMD MINI-6-350

LUMINOUS DISTRIBUTION INTENSITY DATA

Test:U:230.72V I:0.0327A P:4.1561W PF:0.5489 Freq:49.99Hz Lamp Flux:108.98lx1 lm		
NAME: Walloo 14 3.2W CCT LED outdoor wall light	TYPE:	WEIGHT:
SPEC.:	DIM.:	SERIAL No.:
MFR.: CG LIGHTING	SUR.:	Shielding Angle:

Table--2

UNIT: cd

C(DEG) g (DEG)	190	200	210	220	230	240	250	260	270	280	290	300	310	320	330	340	350		
0	0.07	0.03	0.08	0.03	0.08	0.02	0.07	0.02	0.08	0.03	0.10	0.11	0.12	0.11	0.12	0.10	0.11		
5	0.07	0.03	0.07	0.03	0.08	0.02	0.07	0.02	0.08	0.03	0.10	0.09	0.11	0.11	0.12	0.09	0.11		
10	0.07	0.02	0.07	0.02	0.07	0.02	0.06	0.02	0.06	0.03	0.08	0.04	0.10	0.04	0.10	0.05	0.10		
15	0.07	0.02	0.07	0.02	0.05	0.02	0.05	0.02	0.05	0.03	0.06	0.04	0.09	0.03	0.10	0.04	0.10		
20	0.07	0.02	0.06	0.02	0.04	0.02	0.04	0.03	0.03	0.02	0.04	0.04	0.06	0.03	0.08	0.04	0.09		
25	0.07	0.02	0.04	0.02	0.03	0.01	0.02	0.01	0.03	0.02	0.03	0.04	0.06	0.03	0.07	0.04	0.09		
30	0.07	0.02	0.04	0.02	0.01	0.03	0.01	0.01	0.01	0.02	0.02	0.04	0.03	0.03	0.06	0.04	0.08		
35	0.07	0.02	0.04	0.02	0.01	0.01	0.01	0.01	0.01	0.03	0.02	0.04	0.03	0.03	0.04	0.04	0.07		
40	0.07	0.02	0.03	0.02	0.01	0.01	0.02	0.02	0.01	0.02	0.04	0.04	0.03	0.03	0.03	0.04	0.06		
45	0.06	0.02	0.02	0.01	0.01	0.02	0.02	0.02	0.02	0.02	0.02	0.03	0.03	0.04	0.03	0.04	0.06		
50	0.05	0.02	0.02	0.02	0.01	0.02	0.01	0.03	0.02	0.02	0.03	0.03	0.04	0.04	0.03	0.04	0.05		
55	0.04	0.02	0.02	0.02	0.01	0.03	0.01	0.03	0.02	0.03	0.04	0.03	0.03	0.04	0.03	0.04	0.05		
60	0.04	0.03	0.02	0.03	0.01	0.03	0.01	0.04	0.03	0.04	0.04	0.04	0.03	0.04	0.03	0.04	0.04		
65	0.04	0.04	0.02	0.04	0.01	0.03	0.01	0.04	0.03	0.04	0.04	0.04	0.03	0.05	0.03	0.04	0.04		
70	0.04	0.06	0.02	0.06	0.01	0.05	0.02	0.05	0.03	0.06	0.04	0.05	0.03	0.07	0.03	0.06	0.04		
75	0.04	0.05	0.02	0.09	0.01	0.07	0.02	0.07	0.03	0.06	0.04	0.07	0.03	0.08	0.03	0.07	0.04		
80	0.04	0.10	0.11	0.13	0.13	0.11	0.04	0.09	0.03	0.08	0.04	0.12	0.10	0.13	0.07	0.10	0.04		
85	0.09	0.14	0.15	0.16	0.13	0.15	0.15	0.13	0.13	0.13	0.13	0.14	0.14	0.16	0.13	0.13	0.04		
90	0.15	0.16	0.15	0.17	0.16	0.16	0.14	0.14	0.14	0.14	0.14	0.19	0.20	0.21	0.15	0.15	0.13		

C Range: 0 - 360DEG  
 C Interval: 10.0DEG  
 Test Speed: HIGH  
 Temperature:25.3DEG  
 Operators:LQL  
 Test Date:01 August 2023

g Range: 0 - 90DEG  
 Interval: 2.0DEG  
 Test System:EVERFINE GO-2000B\_V1 SYSTEM V2.0.403  
 Humidity:65.0%  
 Test Distance:10.365m [K=1.0000]  
 Remarks: SMD MINI-6-350