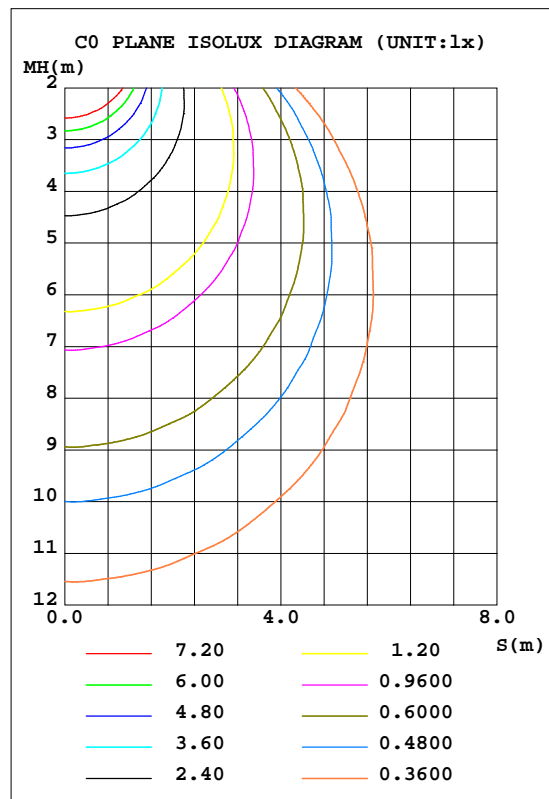
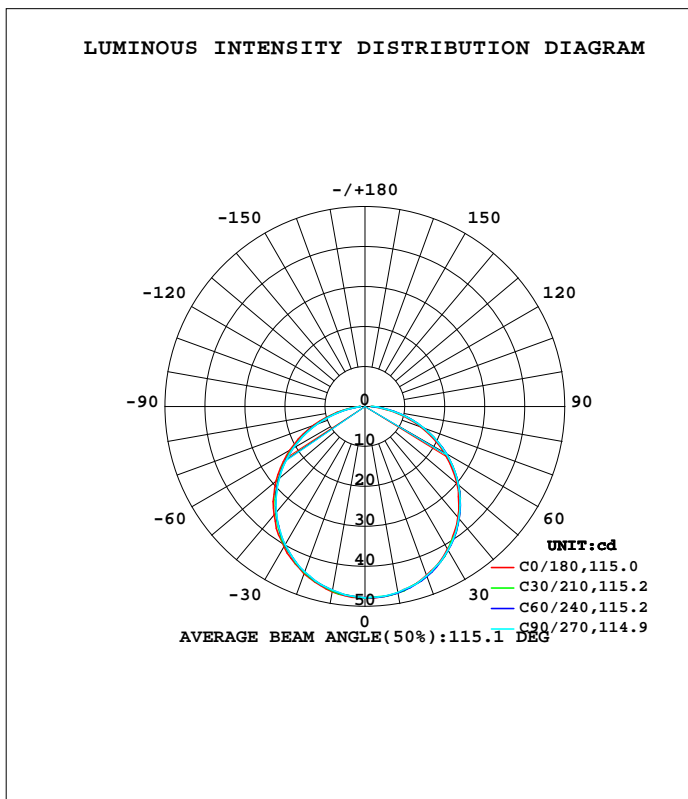


LUMINAIRE PHOTOMETRIC TEST REPORT

Test:U:0.7345V I:0A P:0W PF:0.0000 Freq:50.01Hz Lamp Flux:141.632x1 lm		
NAME: Mag desk 1.5W LED rechargeable portable	TYPE:	WEIGHT:
SPEC.:	DIM.:	SERIAL No.:
MFR.: CG LIGHTING	SUR.:	Shielding Angle:

DATA OF LAMP		PHOTOMETRIC DATA			
MODEL	2053A-7U	I _{max} (cd)	48.02	S/MH(C0/180)	1.25
NOMINAL POWER(W)		LOR(%)	100.0	S/MH(C90/270)	1.24
RATED VOLTAGE(V)	230.0	TOTAL FLUX(lm)	141.63	h UP, DN(C0-180)	0.0,51.6
NOMINAL FLUX(lm)	141.632	CIE CLASS	DIRECT	h UP, DN(C180-360)	0.0,48.4
LAMPS INSIDE	1	h up(%)	0.0	CIBSE SHR NOM	1.25
TEST VOLTAGE(V)	230.0	h down(%)	100.0	CIBSE SHR MAX	1.35



C Range: 0 - 360DEG
 C Interval: 10.0DEG
 Test Speed: HIGH
 Temperature:25.3DEG
 Operators:LQL
 Test Date:22 August 2023

Range: 0 - 90DEG
 Interval: 2.0DEG
 Test System:EVERFINE GO-2000B_V1 SYSTEM V2.0.403
 Humidity:65.0%
 Test Distance:10.365m [K=1.0000]
 Remarks: SMD

ZONAL FLUX DIAGRAM

ZONAL FLUX DIAGRAM:

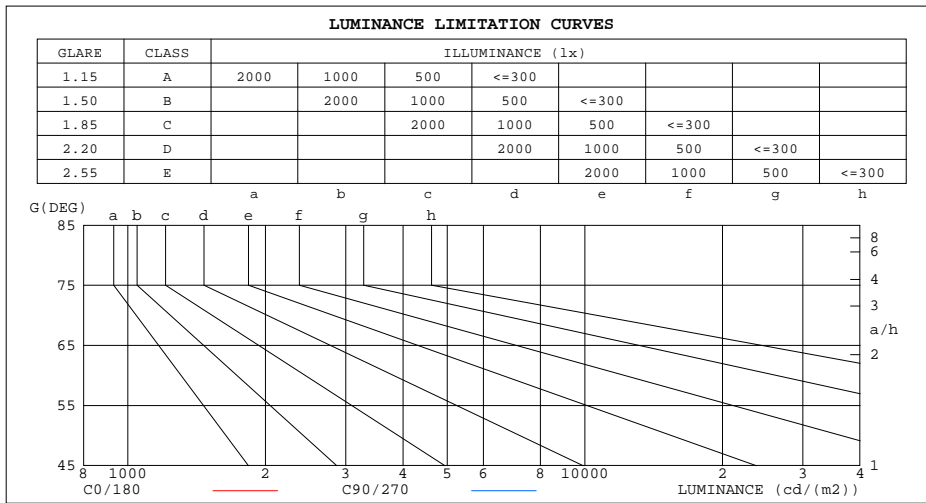
g	C0	C45	C90	C135	C180	C225	C270	C315	g	F zone	F total	%lum,lamp
10	47.30	47.42	47.22	46.99	47.05	46.82	46.66	46.83	0- 10	4.524	4.524	3.19,3.19
20	44.91	45.21	45.12	44.75	44.57	44.15	44.05	44.35	10- 20	12.99	17.51	12.4,12.4
30	41.21	41.58	41.55	41.11	40.54	40.05	39.91	40.31	20- 30	19.76	37.27	26.3,26.3
40	36.14	36.69	36.54	36.03	35.38	34.69	34.54	35.27	30- 40	24.01	61.28	43.3,43.3
50	29.99	30.56	30.51	29.74	29.07	28.16	27.97	28.78	40- 50	25.17	86.45	61,61
60	22.89	23.51	23.42	22.64	21.67	20.76	20.60	21.51	50- 60	23.08	109.5	77.3,77.3
70	14.77	15.59	15.56	14.66	13.56	12.70	12.59	13.47	60- 70	17.94	127.5	90,90
80	6.744	7.441	7.459	6.670	5.612	4.889	4.851	5.633	70- 80	10.60	138.1	97.5,97.5
90	1.429	1.611	1.593	1.392	1.243	1.195	1.198	1.250	80- 90	3.549	141.6	100,100
100									90-100			
110									100-110			
120									110-120			
130									120-130			
140									130-140			
150									140-150			
160									150-160			
170									160-170			
180									170-180			
DEG	LUMINOUS INTENSITY:cd									UNIT:lm		

C Range: 0 - 360DEG
 C Interval: 10.0DEG
 Test Speed: HIGH
 Temperature:25.3DEG
 Operators:LQL
 Test Date:22 August 2023

g Range: 0 - 90DEG
 Interval: 2.0DEG
 Test System:EVERFINE GO-2000B_V1 SYSTEM V2.0.403
 Humidity:65.0%
 Test Distance:10.365m [K=1.0000]
 Remarks: SMD

LUMINANCE LIMITATION CURVES

Test:U:0.7345V I:0A P:0W PF:0.0000 Freq:50.01Hz Lamp Flux:141.632x1 lm		
NAME: Mag desk 1.5W LED rechargeable portable	TYPE:	WEIGHT:
SPEC.:	DIM.:	SERIAL No.:
MFR.: CG LIGHTING	SUR.:	Shielding Angle:



LUMINANCE cd/(m2)		
G(DEG)	C0/180	C90/270
85	456	527
80	388	430
75	441	473
70	432	455
65	465	481
60	458	468
55	474	485
50	467	475
45	478	485

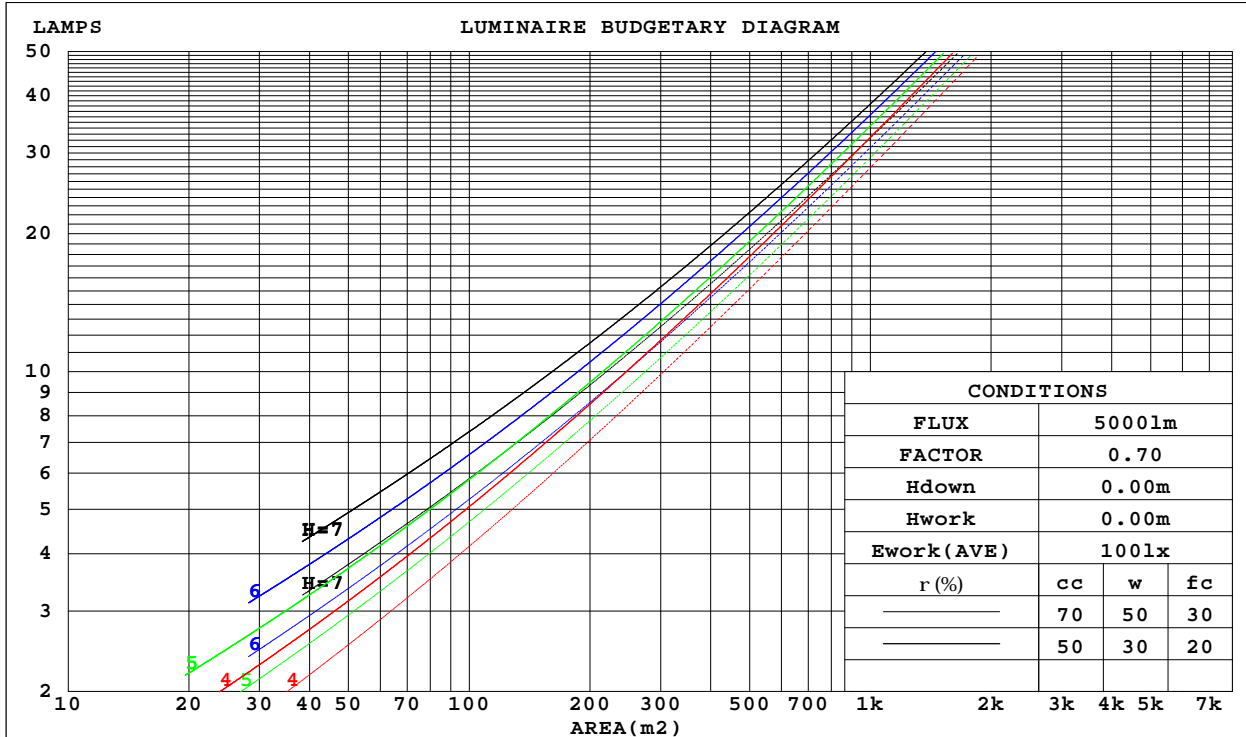
C Range: 0 - 360DEG
 C Interval: 10.0DEG
 Test Speed: HIGH
 Temperature:25.3DEG
 Operators:LQL
 Test Date:22 August 2023

G Range: 0 - 90DEG
 G Interval: 2.0DEG
 Test System:EVERFINE GO-2000B_V1 SYSTEM V2.0.403
 Humidity:65.0%
 Test Distance:10.365m [K=1.0000]
 Remarks: SMD

CU AND LUMINAIRE BUDGETARY ESTIMATE DIAGRAM

Test:U:0.7345V I:0A P:0W PF:0.0000 Freq:50.01Hz Lamp Flux:141.632x1 lm		
NAME: Mag desk 1.5W LED rechargeable portable	TYPE:	WEIGHT:
SPEC.:	DIM.:	SERIAL No.:
MFR.: CG LIGHTING	SUR.:	Shielding Angle:

r _{cc}	80%			70%			50%			30%			10%			0
r _w	50%	30%	10%	50%	30%	10%	50%	30%	10%	50%	30%	10%	50%	30%	10%	0
r _{fc}	20%			20%			20%			20%			20%			0
RCR	RCR:Room Cavity Ratio						Coefficients of Utilization(CU)									
0.0	1.19	1.19	1.19	1.16	1.16	1.16	1.11	1.11	1.11	1.06	1.06	1.06	1.02	1.02	1.02	.00
1.0	1.03	.99	.95	1.01	.97	.93	.97	.93	.90	.93	.90	.88	.89	.87	.85	.83
2.0	.90	.83	.77	.88	.81	.76	.84	.79	.74	.81	.76	.72	.78	.74	.71	.69
3.0	.79	.70	.64	.77	.69	.63	.74	.67	.62	.71	.66	.61	.69	.64	.60	.57
4.0	.69	.60	.54	.68	.60	.53	.66	.58	.52	.63	.57	.52	.61	.56	.51	.49
5.0	.62	.53	.46	.61	.52	.46	.59	.51	.45	.57	.50	.45	.55	.49	.44	.42
6.0	.56	.47	.40	.55	.46	.40	.53	.45	.40	.51	.44	.39	.50	.44	.39	.37
7.0	.50	.42	.35	.50	.41	.35	.48	.40	.35	.47	.40	.35	.45	.39	.34	.32
8.0	.46	.37	.31	.45	.37	.31	.44	.36	.31	.43	.36	.31	.42	.35	.31	.29
9.0	.42	.34	.28	.42	.34	.28	.40	.33	.28	.39	.33	.28	.38	.32	.28	.26
10.0	.39	.31	.26	.38	.31	.26	.37	.30	.25	.36	.30	.25	.36	.30	.25	.23



C Range: 0 - 360DEG
 C Interval: 10.0DEG
 Test Speed: HIGH
 Temperature:25.3DEG
 Operators:LQL
 Test Date:22 August 2023

Range: 0 - 90DEG
 Interval: 2.0DEG
 Test System:EVERFINE GO-2000B_V1 SYSTEM V2.0.403
 Humidity:65.0%
 Test Distance:10.365m [K=1.0000]
 Remarks: SMD

WEC AND CCEC

Test:U:0.7345V I:0A P:0W PF:0.0000 Freq:50.01Hz Lamp Flux:141.632x1 lm		
NAME: Mag desk 1.5W LED rechargeable portable	TYPE:	WEIGHT:
SPEC.:	DIM.:	SERIAL No.:
MFR.: CG LIGHTING	SUR.:	Shielding Angle:

rcc	80%			70%			50%			30%			10%			0
rw	50%	30%	10%	50%	30%	10%	50%	30%	10%	50%	30%	10%	50%	30%	10%	0
rfc	20%			20%			20%			20%			20%			0
RCR	RCR:Room Cavity Ratio						Wall Exitance Coefficients(WEC)									
0.0																
1.0	.320	.182	.058	.313	.179	.057	.300	.172	.055	.287	.166	.053	.276	.160	.052	
2.0	.298	.164	.050	.292	.161	.050	.280	.156	.048	.270	.151	.047	.260	.147	.046	
3.0	.275	.146	.044	.269	.144	.043	.259	.140	.043	.249	.137	.042	.240	.133	.041	
4.0	.253	.131	.039	.248	.130	.038	.239	.127	.038	.230	.124	.037	.222	.121	.037	
5.0	.233	.119	.034	.229	.118	.034	.221	.115	.034	.213	.112	.033	.206	.110	.033	
6.0	.216	.108	.031	.212	.107	.031	.205	.105	.031	.198	.103	.030	.192	.101	.030	
7.0	.201	.099	.028	.197	.098	.028	.191	.097	.028	.185	.095	.028	.179	.093	.027	
8.0	.187	.092	.026	.184	.091	.026	.178	.089	.025	.173	.088	.025	.168	.086	.025	
9.0	.175	.085	.024	.173	.084	.024	.167	.083	.023	.163	.081	.023	.158	.080	.023	
10.0	.165	.079	.022	.162	.078	.022	.158	.077	.022	.153	.076	.022	.149	.075	.022	

rcc	80%			70%			50%			30%			10%			0
rw	50%	30%	10%	50%	30%	10%	50%	30%	10%	50%	30%	10%	50%	30%	10%	0
rfc	20%			20%			20%			20%			20%			0
RCR	RCR:Room Cavity Ratio						Ceiling Cavity Exitance Coefficients(CCEC)									
0.0	.190	.190	.190	.163	.163	.163	.111	.111	.111	.064	.064	.064	.020	.020	.020	
1.0	.181	.156	.134	.155	.134	.115	.106	.092	.079	.061	.053	.046	.020	.017	.015	
2.0	.173	.132	.097	.148	.114	.084	.102	.079	.059	.059	.046	.034	.019	.015	.011	
3.0	.165	.114	.074	.142	.099	.064	.097	.069	.045	.056	.040	.026	.018	.013	.009	
4.0	.158	.101	.058	.135	.087	.050	.093	.061	.035	.054	.036	.021	.017	.012	.007	
5.0	.150	.091	.047	.129	.078	.041	.089	.055	.029	.052	.032	.017	.017	.011	.006	
6.0	.143	.082	.039	.123	.071	.034	.085	.050	.024	.049	.029	.014	.016	.010	.005	
7.0	.136	.075	.033	.117	.065	.029	.081	.046	.020	.047	.027	.012	.015	.009	.004	
8.0	.130	.070	.028	.112	.060	.025	.077	.042	.018	.045	.025	.010	.015	.008	.003	
9.0	.123	.065	.025	.106	.056	.022	.074	.039	.016	.043	.023	.009	.014	.008	.003	
10.0	.118	.060	.022	.102	.052	.019	.070	.037	.014	.041	.022	.008	.013	.007	.003	

C Range: 0 - 360DEG
 C Interval: 10.0DEG
 Test Speed: HIGH
 Temperature:25.3DEG
 Operators:LQL
 Test Date:22 August 2023

g Range: 0 - 90DEG
 g Interval: 2.0DEG
 Test System:EVERFINE GO-2000B_V1 SYSTEM V2.0.403
 Humidity:65.0%
 Test Distance:10.365m [K=1.0000]
 Remarks: SMD

UGR(Unified Glare Rating) Table

Test:U:0.7345V I:0A P:0W PF:0.0000 Freq:50.01Hz Lamp Flux:141.632x1 lm										
NAME: Mag desk 1.5W LED rechargeable portable					TYPE:			WEIGHT:		
SPEC.:					DIM.:			SERIAL No.:		
MFR.: CG LIGHTING					SUR.:			Shielding Angle:		
ceiling/cavity	0.7	0.7	0.5	0.5	0.3	0.7	0.7	0.5	0.5	0.3
walls	0.5	0.3	0.5	0.3	0.3	0.5	0.3	0.5	0.3	0.3
working plane	0.2	0.2	0.2	0.2	0.2	0.2	0.2	0.2	0.2	0.2
Room dimensions	Viewed crosswise					Viewed endwise				
x = 2H y = 2H	17.2	18.8	17.5	19.0	19.2	17.3	18.8	17.6	19.0	19.2
3H	18.9	20.3	19.2	20.5	20.8	19.0	20.4	19.3	20.7	20.9
4H	19.5	20.9	19.9	21.1	21.4	19.7	21.1	20.0	21.3	21.6
6H	20.1	21.3	20.4	21.6	21.9	20.3	21.6	20.6	21.8	22.1
8H	20.2	21.5	20.6	21.8	22.1	20.5	21.7	20.8	22.0	22.3
12H	20.4	21.6	20.7	21.8	22.2	20.7	21.9	21.0	22.2	22.5
4H 2H	17.9	19.3	18.2	19.5	19.8	18.0	19.3	18.3	19.6	19.8
3H	19.7	20.9	20.1	21.2	21.5	19.9	21.1	20.2	21.3	21.7
4H	20.6	21.6	20.9	22.0	22.3	20.7	21.8	21.1	22.1	22.5
6H	21.2	22.2	21.6	22.5	22.9	21.4	22.4	21.8	22.8	23.1
8H	21.5	22.4	21.9	22.7	23.1	21.7	22.6	22.1	23.0	23.4
12H	21.6	22.5	22.1	22.9	23.3	22.0	22.8	22.4	23.2	23.6
8H 4H	20.9	21.8	21.3	22.2	22.6	21.0	22.0	21.5	22.3	22.7
6H	21.7	22.5	22.2	22.9	23.3	21.9	22.7	22.4	23.1	23.5
8H	22.1	22.8	22.5	23.2	23.6	22.3	23.0	22.8	23.4	23.9
12H	22.4	23.0	22.9	23.4	23.9	22.7	23.3	23.2	23.7	24.2
12H 4H	20.9	21.8	21.4	22.2	22.6	21.1	21.9	21.5	22.3	22.7
6H	21.8	22.5	22.3	22.9	23.4	22.0	22.7	22.5	23.1	23.6
8H	22.2	22.8	22.7	23.3	23.7	22.5	23.1	23.0	23.5	24.0
Variations with the observer position at spacings:										
S = 1.0H	+ 0.1 / - 0.2					+ 0.1 / - 0.2				
1.5H	+ 0.2 / - 0.3					+ 0.2 / - 0.3				
2.0H	+ 0.1 / - 0.4					+ 0.1 / - 0.3				

CIE Pub.117, 141.6 lm Total Lamp Luminous Flux Correct (8log(F/F0) = -6.8)

C Range: 0 - 360DEG
 C Interval: 10.0DEG
 Test Speed: HIGH
 Temperature:25.3DEG
 Operators:LQL
 Test Date:22 August 2023

g Range: 0 - 90DEG
 g Interval: 2.0DEG
 Test System:EVERFINE GO-2000B_V1 SYSTEM V2.0.403
 Humidity:65.0%
 Test Distance:10.365m [K=1.0000]
 Remarks: SMD

UTILIZATION FACTORS TABLE

Test:U:0.7345V I:0A P:0W PF:0.0000 Freq:50.01Hz Lamp Flux:141.632x1 lm		
NAME: Mag desk 1.5W LED rechargeable portable	TYPE:	WEIGHT:
SPEC.:	DIM.:	SERIAL No.:
MFR.: CG LIGHTING	SUR.:	Shielding Angle:

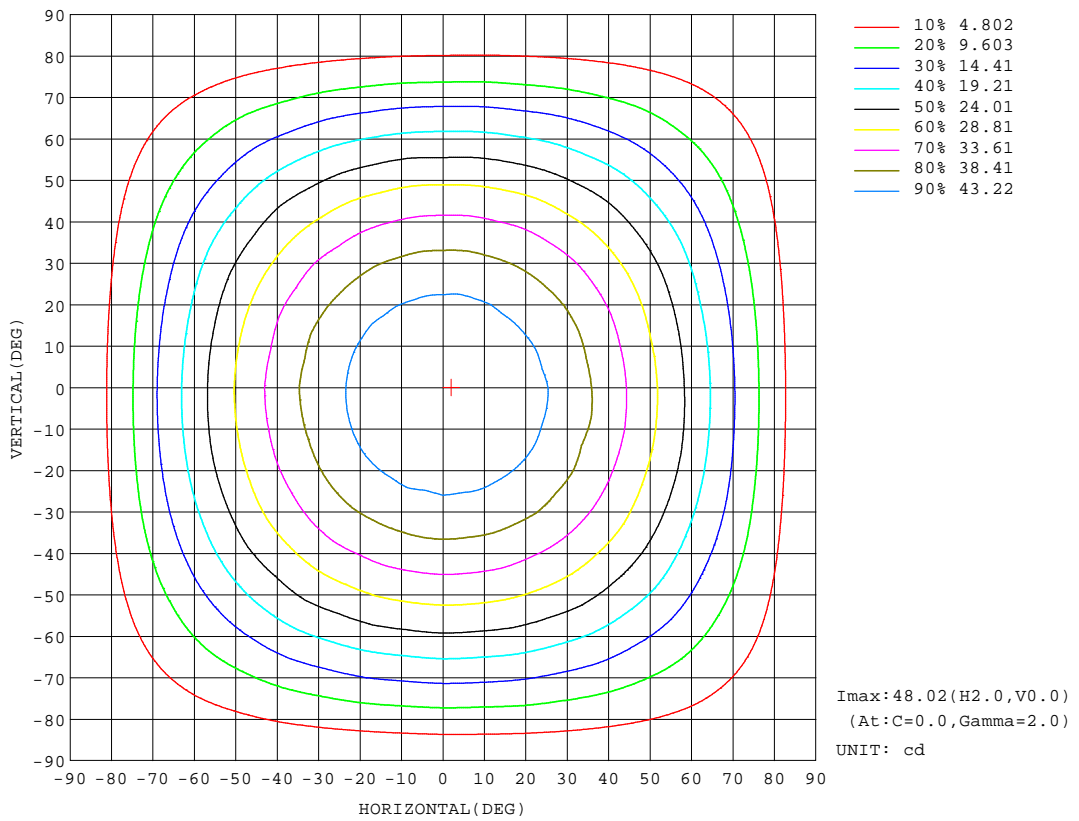
REFLECTANCE										
Ceiling	0.8	0.8	0.8	0.7	0.7	0.7	0.5	0.5	0.5	0
Walls	0.7	0.5	0.3	0.7	0.5	0.3	0.7	0.5	0.3	0
Working plane	0.2	0.2	0.2	0.2	0.2	0.2	0.2	0.2	0.2	0
ROOM INDEX	UTILIZATION FACTORS(PERCENT) $k(RI) \times RCR = 5$									
k = 0.60	57	45	38	56	45	38	55	44	38	31
0.80	67	55	47	66	55	47	64	54	47	40
1.00	75	64	56	74	63	56	72	65	56	48
1.25	82	72	64	81	71	64	78	69	63	56
1.50	87	77	70	86	76	70	83	75	68	61
2.00	94	86	79	92	84	78	89	82	77	69
2.50	98	90	84	96	89	83	92	86	81	73
3.00	102	95	89	99	93	88	95	90	86	77
4.00	106	100	95	103	98	94	99	95	91	82
5.00	108	103	99	106	101	97	101	98	94	85
ROOM INDEX	UF(total)									Direct
According to DIN EN 13032-2 2004			Suspended				SHRNOM = 1.25			

C Range: 0 - 360DEG
 C Interval: 10.0DEG
 Test Speed: HIGH
 Temperature:25.3DEG
 Operators:LQL
 Test Date:22 August 2023

g Range: 0 - 90DEG
 Interval: 2.0DEG
 Test System:EVERFINE GO-2000B_V1 SYSTEM V2.0.403
 Humidity:65.0%
 Test Distance:10.365m [K=1.0000]
 Remarks: SMD

ISOCANDELA DIAGRAM

Test:U:0.7345V I:0A P:0W PF:0.0000 Freq:50.01Hz Lamp Flux:141.632x1 lm		
NAME: Mag desk 1.5W LED rechargeable portable	TYPE:	WEIGHT:
SPEC.:	DIM.:	SERIAL No.:
MFR.: CG LIGHTING	SUR.:	Shielding Angle:

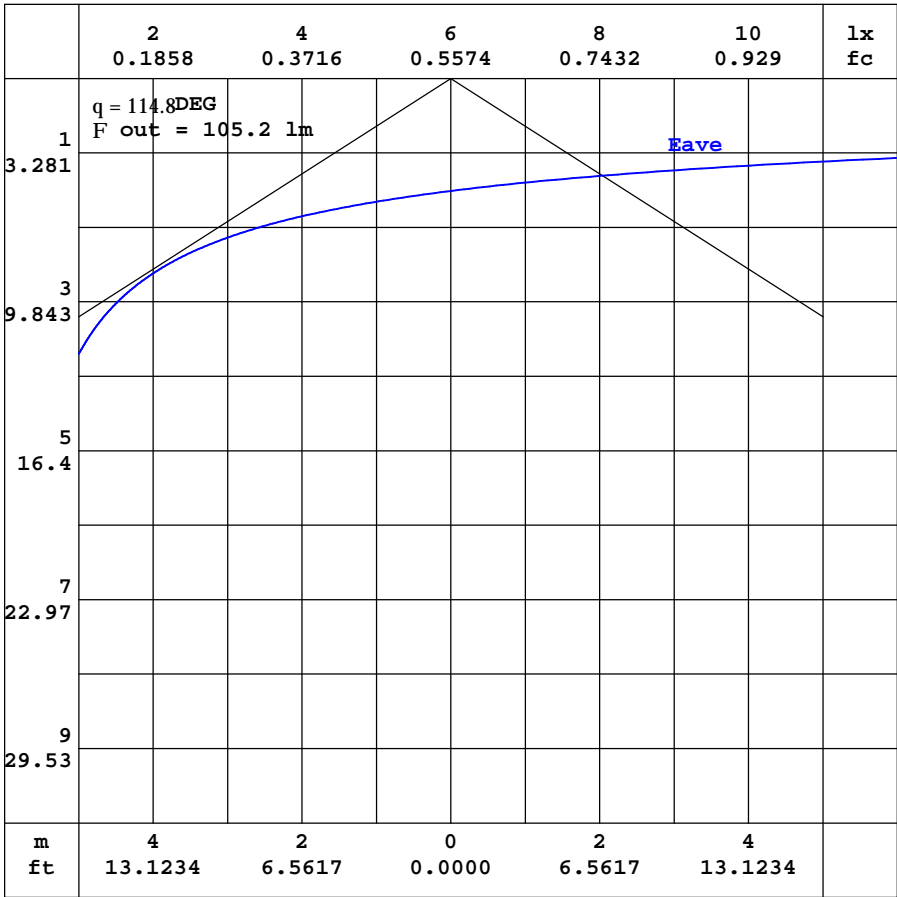


C Range: 0 - 360DEG
 C Interval: 10.0DEG
 Test Speed: HIGH
 Temperature:25.3DEG
 Operators:LQL
 Test Date:22 August 2023

Range: 0 - 90DEG
 Interval: 2.0DEG
 Test System:EVERFINE GO-2000B_V1 SYSTEM V2.0.403
 Humidity:65.0%
 Test Distance:10.365m [K=1.0000]
 Remarks: SMD

AAI CURVES

Test:U:0.7345V I:0A P:0W PF:0.0000 Freq:50.01Hz Lamp Flux:141.632x1 lm		
NAME: Mag desk 1.5W LED rechargeable portable	TYPE:	WEIGHT:
SPEC.:	DIM.:	SERIAL No.:
MFR.: CG LIGHTING	SUR.:	Shielding Angle:



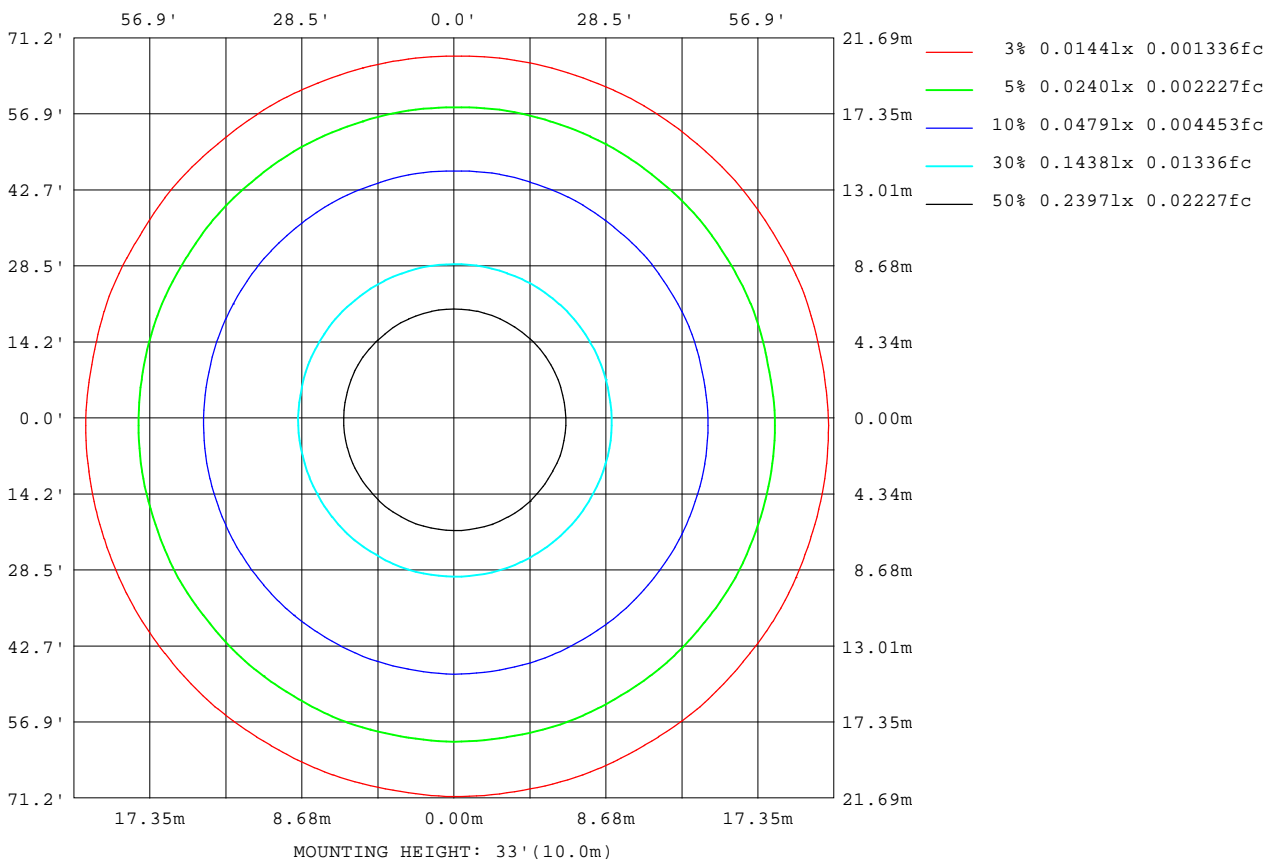
Note:The Curves indicate the illuminated area and the average illumination when the luminaire is at different distance.

C Range: 0 - 360DEG
 C Interval: 10.0DEG
 Test Speed: HIGH
 Temperature:25.3DEG
 Operators:LQL
 Test Date:22 August 2023

Range: 0 - 90DEG
 Interval: 2.0DEG
 Test System:EVERFINE GO-2000B_V1 SYSTEM V2.0.403
 Humidity:65.0%
 Test Distance:10.365m [K=1.0000]
 Remarks: SMD

ISOLUX DIAGRAM

Test:U:0.7345V I:0A P:0W PF:0.0000 Freq:50.01Hz Lamp Flux:141.632x1 lm		
NAME: Mag desk 1.5W LED rechargeable portable	TYPE:	WEIGHT:
SPEC.:	DIM.:	SERIAL No.:
MFR.: CG LIGHTING	SUR.:	Shielding Angle:



C Range: 0 - 360DEG
 C Interval: 10.0DEG
 Test Speed: HIGH
 Temperature:25.3DEG
 Operators:LQL
 Test Date:22 August 2023

Range: 0 - 90DEG
 Interval: 2.0DEG
 Test System:EVERFINE GO-2000B_V1 SYSTEM V2.0.403
 Humidity:65.0%
 Test Distance:10.365m [K=1.0000]
 Remarks: SMD

LED Avg.L Report

Test:U:0.7345V I:0A P:0W PF:0.0000 Freq:50.01Hz Lamp Flux:141.632x1 lm		
NAME: Mag desk 1.5W LED rechargeable portable	TYPE:	WEIGHT:
SPEC.:	DIM.:	SERIAL No.:
MFR.: CG LIGHTING	SUR.:	Shielding Angle:

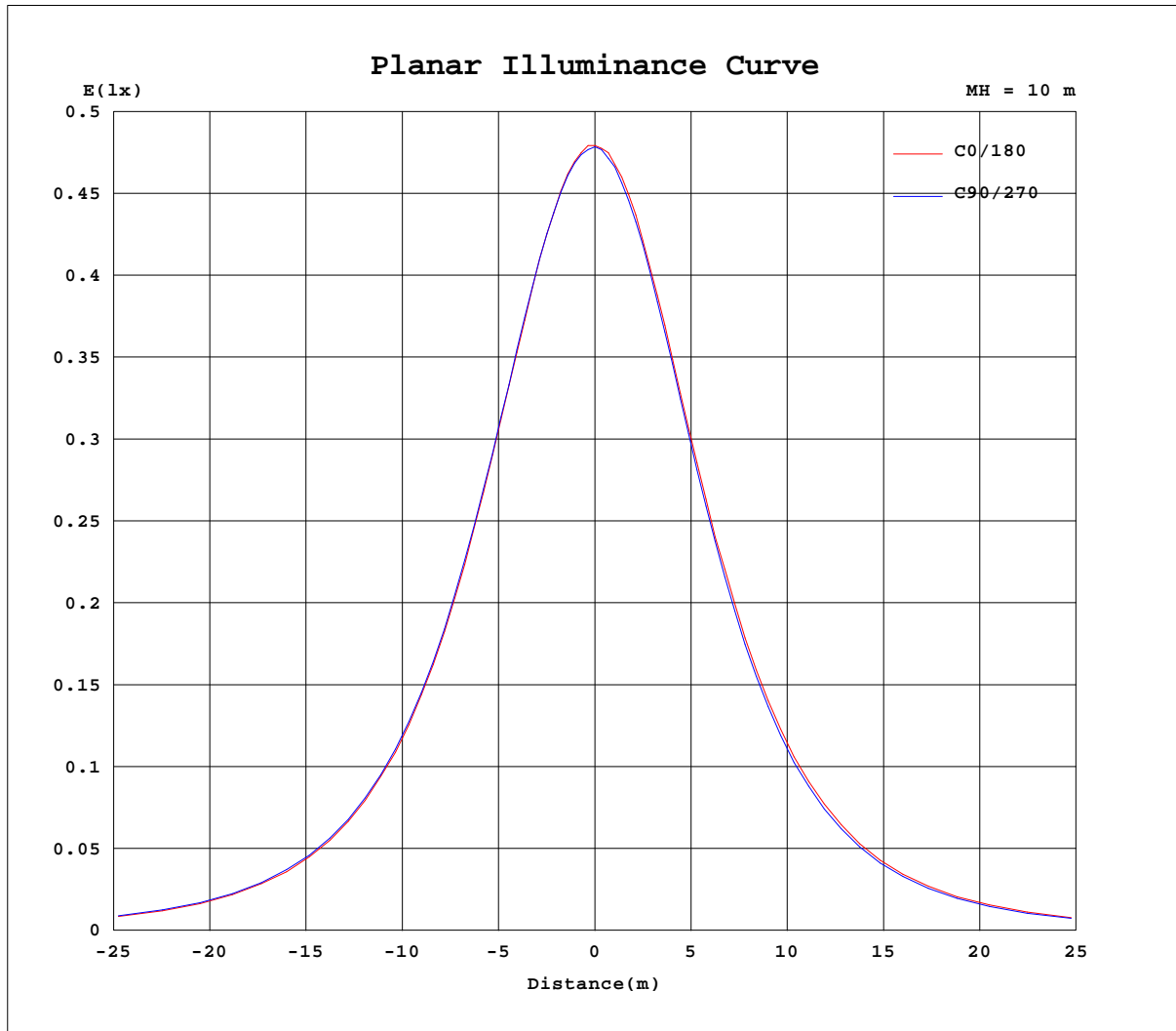
AvgL	cd/m2
L_0~180(65)av	433
L_0~180(75)av	387
L_0~180(85)av	337
L_90~270(65)av	429
L_90~270(75)av	385
L_90~270(85)av	347
L_45(65)av	430
L_45(75)av	387
L_45(85)av	342

Standard: GB/T 29293-2012

C Range: 0 - 360DEG
 C Interval: 10.0DEG
 Test Speed: HIGH
 Temperature:25.3DEG
 Operators:LQL
 Test Date:22 August 2023

g Range: 0 - 90DEG
 g Interval: 2.0DEG
 Test System:EVERFINE GO-2000B_V1 SYSTEM V2.0.403
 Humidity:65.0%
 Test Distance:10.365m [K=1.0000]
 Remarks: SMD

Planar Illuminance Curve



C Range: 0 - 360DEG
 C Interval: 10.0DEG
 Test Speed: HIGH
 Temperature: 25.3DEG
 Operators: LQL
 Test Date: 22 August 2023

Page Range: 0 - 90DEG
 Interval: 2.0DEG
 Test System: EVERFINE GO-2000B_V1 SYSTEM V2.0.403
 Humidity: 65.0%
 Test Distance: 10.365m [K=1.0000]
 Remarks: SMD

LUMINOUS DISTRIBUTION INTENSITY DATA

Test:U:0.7345V I:0A P:0W PF:0.0000 Freq:50.01Hz Lamp Flux:141.632x1 lm
NAME: Mag desk 1.5W LED rechargeable portable TYPE: WEIGHT:
SPEC.: DIM.: SERIAL No.:
MFR.: CG LIGHTING SUR.: Shielding Angle:

Table--1

UNIT: cd

Table with 18 columns (C(0-180 DEG) and 19 rows (g(0-90 DEG)) containing luminous intensity data in cd.

C Range: 0 - 360DEG
C Interval: 10.0DEG
Test Speed: HIGH
Temperature:25.3DEG
Operators:LQL
Test Date:22 August 2023

g Range: 0 - 90DEG
Interval: 2.0DEG
Test System:EVERFINE GO-2000B_V1 SYSTEM V2.0.403
Humidity:65.0%
Test Distance:10.365m [K=1.0000]
Remarks: SMD

LUMINOUS DISTRIBUTION INTENSITY DATA

Test:U:0.7345V I:0A P:0W PF:0.0000 Freq:50.01Hz Lamp Flux:141.632x1 lm		
NAME: Mag desk 1.5W LED rechargeable portable	TYPE:	WEIGHT:
SPEC.:	DIM.:	SERIAL No.:
MFR.: CG LIGHTING	SUR.:	Shielding Angle:

Table--2

UNIT: cd

C(DEG) g (DEG)	190	200	210	220	230	240	250	260	270	280	290	300	310	320	330	340	350		
0	47.7	47.8	47.9	47.8	47.8	47.8	47.8	47.8	47.9	47.8	47.8	47.7	47.8	47.9	47.8	47.8	47.7		
5	47.6	47.8	47.6	47.6	47.5	47.5	47.6	47.6	47.5	47.6	47.4	47.6	47.6	47.6	47.6	47.7	47.6		
10	47.0	46.8	46.9	46.9	46.7	46.7	46.7	46.7	46.7	46.7	46.9	46.8	46.7	47.0	46.8	46.9	47.1		
15	46.2	45.8	45.9	45.9	45.8	45.9	45.8	45.8	45.9	45.8	45.9	46.1	46.0	46.0	46.1	46.3	46.3		
20	44.4	44.3	44.3	44.3	44.0	44.1	44.0	44.1	44.1	44.1	44.1	44.2	44.2	44.5	44.4	44.5	44.7		
25	42.9	42.8	42.8	42.8	42.6	42.6	42.5	42.6	42.6	42.7	42.7	43.0	42.7	42.9	43.1	43.3	43.3		
30	40.4	40.3	40.3	40.2	39.9	40.0	40.0	40.0	39.9	40.1	40.1	40.2	40.2	40.4	40.6	40.8	40.9		
35	38.4	38.5	38.2	38.0	38.0	38.0	37.9	38.0	37.9	38.1	38.1	38.3	38.4	38.5	38.9	39.0	39.0		
40	35.1	35.2	34.8	34.8	34.6	34.6	34.5	34.6	34.5	34.7	34.8	34.9	35.1	35.4	35.4	35.7	35.8		
45	32.6	32.5	32.4	32.2	32.0	32.1	32.0	32.1	32.0	32.3	32.3	32.6	32.6	32.9	33.1	33.3	33.4		
50	28.8	28.6	28.4	28.2	28.1	28.1	28.0	28.1	28.0	28.3	28.4	28.6	28.6	28.9	29.1	29.5	29.6		
55	25.8	25.7	25.6	25.4	25.2	25.3	25.1	25.3	25.2	25.5	25.4	25.8	25.7	26.3	26.3	26.7	26.8		
60	21.5	21.3	20.9	20.9	20.6	20.7	20.5	20.7	20.6	20.9	20.9	21.2	21.3	21.7	21.8	22.3	22.3		
65	18.1	18.1	17.7	17.7	17.4	17.5	17.4	17.5	17.5	17.7	17.8	18.1	18.2	18.5	18.6	19.1	19.2		
70	13.2	13.1	12.8	12.9	12.6	12.6	12.5	12.7	12.6	12.7	12.9	13.2	13.3	13.6	13.9	14.2	14.4		
75	9.97	9.73	9.57	9.57	9.31	9.33	9.23	9.34	9.31	9.59	9.63	9.91	10.1	10.5	10.5	10.9	11.1		
80	5.42	5.23	5.02	4.94	4.84	4.79	4.79	4.83	4.85	5.02	5.13	5.34	5.51	5.75	5.92	6.19	6.41		
85	2.88	2.78	2.60	2.54	2.51	2.48	2.48	2.46	2.54	2.56	2.69	2.84	2.98	3.14	3.31	3.46	3.69		
90	1.22	1.21	1.20	1.19	1.20	1.18	1.19	1.20	1.20	1.21	1.24	1.22	1.26	1.24	1.30	1.33	1.38		

C Range: 0 - 360DEG
 C Interval: 10.0DEG
 Test Speed: HIGH
 Temperature:25.3DEG
 Operators:LQL
 Test Date:22 August 2023

g Range: 0 - 90DEG
 Interval: 2.0DEG
 Test System:EVERFINE GO-2000B_V1 SYSTEM V2.0.403
 Humidity:65.0%
 Test Distance:10.365m [K=1.0000]
 Remarks: SMD