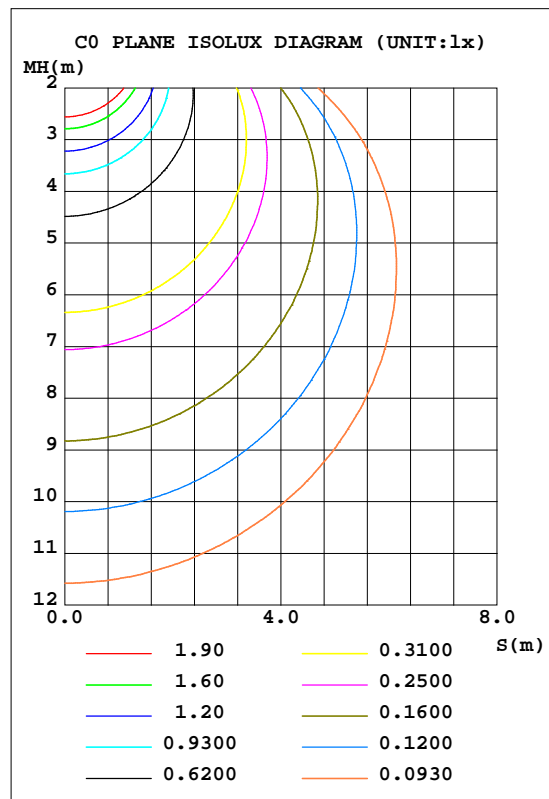
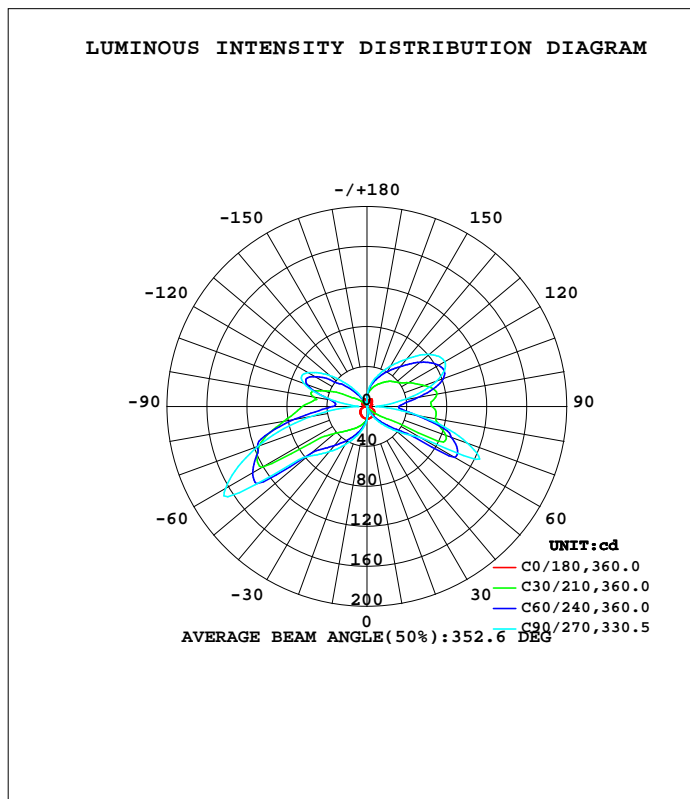


LUMINAIRE PHOTOMETRIC TEST REPORT

Test:U:230.44V I:0.0597A P:10.577W PF:0.7684 Freq:49.99Hz Lamp Flux:552.336x1 lm		
NAME: Stanley 35 2x5W LED	TYPE:	WEIGHT:
SPEC.:	DIM.:	SERIAL No.:
MFR.: CG LIGHTING	SUR.:	Shielding Angle:

DATA OF LAMP		PHOTOMETRIC DATA Eff: 52.22 lm/W			
MODEL	1745C-89	I <sub>max</sub> (cd)	168.9	S/MH(C0/180)	1.34
NOMINAL POWER(W)		LOR(%)	100.0	S/MH(C90/270)	4.33
RATED VOLTAGE(V)	230.0	TOTAL FLUX(lm)	552.34	h UP, DN(C0-180)	26.7, 20.9
NOMINAL FLUX(lm)	552.336	CIE CLASS	DIFFUSE	h UP, DN(C180-360)	16.0, 36.5
LAMPS INSIDE	1	h up(%)	42.6	CIBSE SHR NOM	1.50
TEST VOLTAGE(V)	230.0	h down(%)	57.4	CIBSE SHR MAX	1.55



C Range: 0 - 360DEG  
 C Interval: 10.0DEG  
 Test Speed: HIGH  
 Temperature:25.3DEG  
 Operators:LQL  
 Test Date:15 May 2019

Range: 0 - 180DEG  
 Interval: 1.0DEG  
 Test System:EVERFINE GO-2000B\_V1 SYSTEM V2.0.403  
 Humidity:65.0%  
 Test Distance:10.320m [K=1.0000]  
 Remarks: Zigen BGC Q4-500mA-12W

ZONAL FLUX DIAGRAM

ZONAL FLUX DIAGRAM:

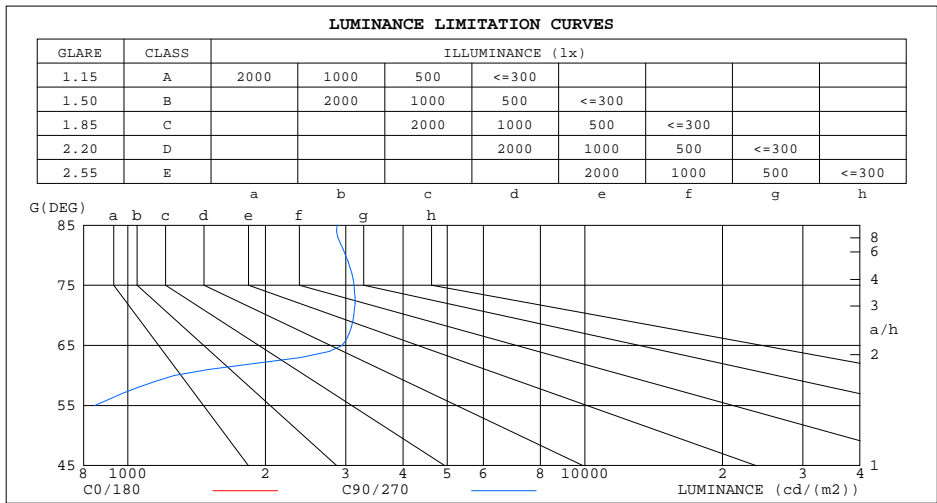
g	C0	C45	C90	C135	C180	C225	C270	C315	g	F zone	F total	%lum,lamp
10	12.29	7.379	5.725	8.045	12.31	18.43	21.60	19.36	0- 10	1.245	1.245	0.23,0.23
20	11.84	2.936	0.4430	3.524	11.87	25.06	31.95	26.28	10- 20	3.908	5.154	0.93,0.93
30	11.15	2.881	10.25	1.900	11.19	32.61	44.34	34.60	20- 30	7.606	12.76	2.31,2.31
40	10.30	11.28	22.23	9.471	10.28	42.59	59.28	46.59	30- 40	14.16	26.92	4.87,4.87
50	9.255	23.69	38.25	19.62	9.167	58.42	78.41	90.76	40- 50	24.89	51.82	9.38,9.38
60	7.852	87.53	63.14	38.47	7.778	131.4	163.3	125.6	50- 60	55.27	107.1	19.4,19.4
70	5.176	88.98	106.8	99.15	5.825	112.7	115.7	97.99	60- 70	85.97	193.1	35,35
80	2.800	58.23	52.01	73.75	3.084	78.13	55.81	60.20	70- 80	75.34	268.4	48.6,48.6
90	0.9226	48.72	8.730	50.45	0.7399	50.16	9.366	43.12	80- 90	48.59	317.0	57.4,57.4
100	3.197	64.12	35.31	53.61	2.786	45.83	32.31	54.50	90-100	40.73	357.7	64.8,64.8
110	4.798	77.72	73.79	73.88	4.949	61.11	66.84	58.85	100-110	51.89	409.6	74.2,74.2
120	5.165	68.60	89.99	72.74	5.821	44.31	67.91	39.37	110-120	52.46	462.1	83.7,83.7
130	5.834	54.80	81.23	58.92	6.139	24.19	48.27	21.71	120-130	39.42	501.5	90.8,90.8
140	7.102	42.83	62.15	45.28	7.126	11.21	26.57	9.827	130-140	25.07	526.5	95.3,95.3
150	8.625	34.09	46.56	35.90	8.501	1.984	10.03	1.297	140-150	14.30	540.8	97.9,97.9
160	7.297	26.25	33.64	27.46	8.010	0.5500	0.2186	1.219	150-160	7.388	548.2	99.3,99.3
170	6.351	18.55	22.39	14.02	6.595	2.762	1.195	3.175	160-170	3.300	551.5	99.9,99.9
180	8.858	8.890	4.863	5.444	8.865	8.799	4.792	5.405	170-180	0.8018	552.3	100,100
DEG	LUMINOUS INTENSITY:cd									UNIT:lm		

C Range: 0 - 360DEG  
 C Interval: 10.0DEG  
 Test Speed: HIGH  
 Temperature:25.3DEG  
 Operators:LQL  
 Test Date:15 May 2019

g Range: 0 - 180DEG  
 Interval: 1.0DEG  
 Test System:EVERFINE GO-2000B\_V1 SYSTEM V2.0.403  
 Humidity:65.0%  
 Test Distance:10.320m [K=1.0000]  
 Remarks: Zigen BGC Q4-500mA-12W

LUMINANCE LIMITATION CURVES

Test:U:230.44V I:0.0597A P:10.577W PF:0.7684 Freq:49.99Hz Lamp Flux:552.336x1 lm		
NAME: Stanley 35 2x5W LED	TYPE:	WEIGHT:
SPEC.:	DIM.:	SERIAL No.:
MFR.: CG LIGHTING	SUR.:	Shielding Angle:



LUMINANCE cd/(m2)		
G(DEG)	C0/180	C90/270
85	167	2870
80	161	2995
75	152	3129
70	151	3122
65	159	2947
60	157	1263
55	151	846
50	144	595
45	139	417

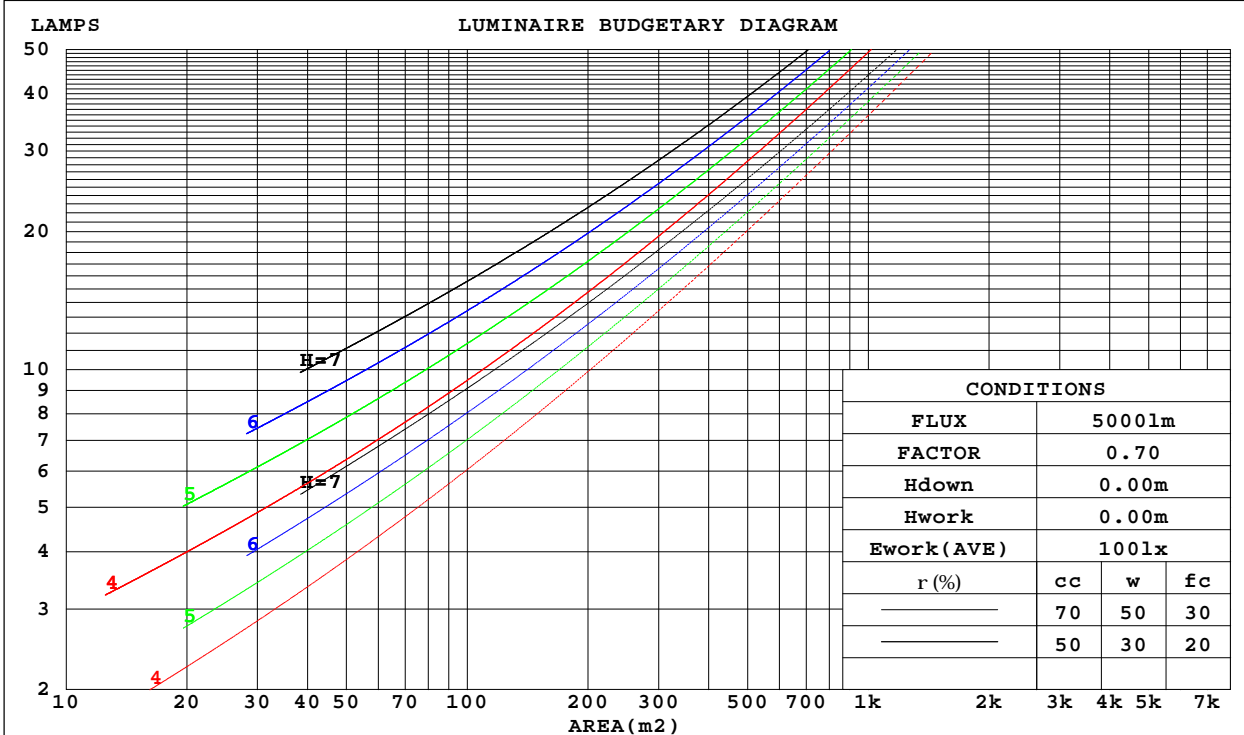
C Range: 0 - 360DEG  
 C Interval: 10.0DEG  
 Test Speed: HIGH  
 Temperature: 25.3DEG  
 Operators: LQL  
 Test Date: 15 May 2019

G Range: 0 - 180DEG  
 G Interval: 1.0DEG  
 Test System: EVERFINE GO-2000B\_V1 SYSTEM V2.0.403  
 Humidity: 65.0%  
 Test Distance: 10.320m [K=1.0000]  
 Remarks: Zigen BGC Q4-500mA-12W

CU AND LUMINAIRE BUDGETARY ESTIMATE DIAGRAM

Test:U:230.44V I:0.0597A P:10.577W PF:0.7684 Freq:49.99Hz Lamp Flux:552.336x1 lm		
NAME: Stanley 35 2x5W LED	TYPE:	WEIGHT:
SPEC.:	DIM.:	SERIAL No.:
MFR.: CG LIGHTING	SUR.:	Shielding Angle:

r <sub>cc</sub>	80%			70%			50%			30%			10%			0
r <sub>w</sub>	50%	30%	10%	50%	30%	10%	50%	30%	10%	50%	30%	10%	50%	30%	10%	0
r <sub>fc</sub>	20%			20%			20%			20%			20%			0
RCR	RCR:Room Cavity Ratio						Coefficients of Utilization(CU)									
0.0	1.09	1.09	1.09	1.01	1.01	1.01	.87	.87	.87	.75	.75	.75	.63	.63	.63	.57
1.0	.87	.81	.75	.80	.75	.70	.68	.64	.60	.57	.53	.50	.46	.44	.42	.36
2.0	.71	.63	.55	.66	.58	.51	.55	.49	.43	.45	.40	.36	.36	.33	.29	.24
3.0	.60	.50	.42	.55	.46	.39	.46	.39	.33	.37	.32	.27	.29	.25	.21	.17
4.0	.51	.41	.33	.47	.38	.31	.39	.32	.26	.32	.26	.21	.25	.20	.16	.12
5.0	.45	.34	.27	.41	.32	.25	.34	.26	.21	.27	.21	.17	.21	.16	.13	.09
6.0	.39	.29	.22	.36	.27	.20	.30	.22	.17	.24	.18	.13	.19	.14	.10	.07
7.0	.35	.25	.19	.32	.23	.17	.27	.19	.14	.21	.16	.11	.17	.12	.08	.05
8.0	.31	.22	.16	.29	.20	.15	.24	.17	.12	.19	.14	.10	.15	.10	.07	.04
9.0	.28	.20	.14	.26	.18	.13	.22	.15	.10	.18	.12	.08	.14	.09	.06	.04
10.0	.26	.18	.12	.24	.16	.11	.20	.14	.09	.16	.11	.07	.13	.08	.05	.03



C Range: 0 - 360DEG  
 C Interval: 10.0DEG  
 Test Speed: HIGH  
 Temperature:25.3DEG  
 Operators:LQL  
 Test Date:15 May 2019

Range: 0 - 180DEG  
 Interval: 1.0DEG  
 Test System:EVERFINE GO-2000B\_V1 SYSTEM V2.0.403  
 Humidity:65.0%  
 Test Distance:10.320m [K=1.0000]  
 Remarks: Zigen BGC Q4-500mA-12W

WEC AND CCEC

Test:U:230.44V I:0.0597A P:10.577W PF:0.7684 Freq:49.99Hz Lamp Flux:552.336x1 lm		
NAME: Stanley 35 2x5W LED	TYPE:	WEIGHT:
SPEC.:	DIM.:	SERIAL No.:
MFR.: CG LIGHTING	SUR.:	Shielding Angle:

rcc	80%			70%			50%			30%			10%			0
rw	50%	30%	10%	50%	30%	10%	50%	30%	10%	50%	30%	10%	50%	30%	10%	0
rfc	20%			20%			20%			20%			20%			0
RCR	RCR:Room Cavity Ratio						Wall Exitance Coefficients(WEC)									
0.0																
1.0	.442	.251	.080	.422	.241	.076	.384	.220	.070	.349	.201	.065	.317	.184	.059	
2.0	.376	.206	.063	.357	.197	.061	.322	.179	.056	.290	.163	.051	.260	.147	.046	
3.0	.327	.174	.052	.311	.166	.050	.279	.151	.046	.249	.137	.042	.222	.123	.038	
4.0	.290	.151	.044	.274	.144	.042	.245	.130	.039	.218	.117	.035	.193	.105	.032	
5.0	.260	.132	.038	.246	.126	.037	.219	.114	.034	.194	.102	.030	.170	.091	.027	
6.0	.235	.118	.034	.222	.112	.032	.197	.101	.029	.174	.091	.027	.153	.080	.024	
7.0	.215	.106	.030	.203	.101	.029	.180	.091	.026	.158	.081	.024	.138	.072	.021	
8.0	.197	.096	.027	.186	.092	.026	.165	.082	.024	.145	.074	.021	.127	.065	.019	
9.0	.183	.088	.025	.172	.084	.024	.153	.075	.021	.134	.067	.019	.117	.059	.017	
10.0	.170	.081	.023	.160	.077	.022	.142	.069	.020	.124	.062	.018	.108	.054	.016	

rcc	80%			70%			50%			30%			10%			0
rw	50%	30%	10%	50%	30%	10%	50%	30%	10%	50%	30%	10%	50%	30%	10%	0
rfc	20%			20%			20%			20%			20%			0
RCR	RCR:Room Cavity Ratio						Ceiling Cavity Exitance Coefficients(CCEC)									
0.0																
1.0	.515	.482	.451	.442	.414	.388	.302	.285	.269	.174	.165	.156	.056	.053	.051	
2.0	.513	.461	.417	.439	.397	.361	.301	.275	.252	.174	.160	.148	.056	.052	.048	
3.0	.507	.446	.397	.435	.385	.345	.298	.267	.242	.172	.156	.142	.055	.051	.047	
4.0	.500	.435	.385	.429	.376	.334	.295	.262	.236	.171	.153	.139	.055	.050	.046	
5.0	.492	.426	.377	.423	.368	.328	.291	.257	.231	.169	.151	.137	.054	.049	.045	
6.0	.484	.418	.371	.416	.362	.323	.287	.254	.229	.167	.149	.136	.054	.049	.045	
7.0	.477	.412	.367	.410	.357	.320	.284	.251	.226	.165	.148	.135	.053	.048	.045	
8.0	.470	.407	.364	.405	.353	.317	.280	.248	.225	.163	.146	.134	.053	.048	.044	
9.0	.464	.402	.361	.399	.349	.315	.277	.246	.224	.161	.145	.133	.052	.048	.044	
10.0	.458	.398	.359	.394	.346	.313	.274	.243	.223	.160	.144	.133	.052	.047	.044	

C Range: 0 - 360DEG  
 C Interval: 10.0DEG  
 Test Speed: HIGH  
 Temperature:25.3DEG  
 Operators:LQL  
 Test Date:15 May 2019

g Range: 0 - 180DEG  
 Interval: 1.0DEG  
 Test System:EVERFINE GO-2000B\_V1 SYSTEM V2.0.403  
 Humidity:65.0%  
 Test Distance:10.320m [K=1.0000]  
 Remarks: Zigen BGC Q4-500mA-12W

UGR(Unified Glare Rating) Table

Test:U:230.44V I:0.0597A P:10.577W PF:0.7684 Freq:49.99Hz Lamp Flux:552.336x1 lm										
NAME: Stanley 35 2x5W LED					TYPE:			WEIGHT:		
SPEC.:					DIM.:			SERIAL No.:		
MFR.: CG LIGHTING					SUR.:			Shielding Angle:		
ceiling/cavity	0.7	0.7	0.5	0.5	0.3	0.7	0.7	0.5	0.5	0.3
walls	0.5	0.3	0.5	0.3	0.3	0.5	0.3	0.5	0.3	0.3
working plane	0.2	0.2	0.2	0.2	0.2	0.2	0.2	0.2	0.2	0.2
Room dimensions	Viewed crosswise					Viewed endwise				
x = 2H y = 2H	4.7	6.0	5.5	6.8	7.8	14.8	16.1	15.6	16.9	18.0
3H	6.8	8.0	7.6	8.8	9.9	19.5	20.6	20.3	21.5	22.6
4H	8.4	9.5	9.2	10.4	11.5	20.8	21.9	21.7	22.8	23.9
6H	9.1	10.1	10.0	11.0	12.1	21.8	22.8	22.6	23.7	24.8
8H	9.5	10.5	10.4	11.4	12.5	22.0	23.0	22.9	23.9	25.0
12H	10.1	11.0	10.9	11.9	13.0	22.2	23.2	23.1	24.1	25.2
4H 2H	13.4	14.5	14.2	15.3	16.4	16.2	17.2	17.0	18.1	19.2
3H	15.9	16.9	16.8	17.8	18.9	20.4	21.3	21.3	22.2	23.4
4H	17.5	18.3	18.3	19.2	20.4	21.8	22.7	22.7	23.6	24.8
6H	18.6	19.3	19.5	20.3	21.5	22.8	23.6	23.7	24.5	25.7
8H	18.8	19.6	19.7	20.5	21.7	23.2	23.9	24.1	24.8	26.0
12H	19.0	19.7	19.9	20.6	21.8	23.4	24.1	24.3	25.0	26.2
8H 4H	19.2	19.9	20.1	20.8	22.0	22.2	22.9	23.1	23.9	25.1
6H	21.1	21.7	22.1	22.7	23.9	23.4	24.0	24.3	25.0	26.2
8H	22.1	22.7	23.1	23.7	24.9	23.8	24.4	24.8	25.4	26.6
12H	23.0	23.5	24.0	24.5	25.7	24.2	24.7	25.2	25.7	26.9
12H 4H	19.3	20.0	20.3	21.0	22.2	22.3	23.0	23.2	23.9	25.1
6H	21.5	22.1	22.5	23.0	24.3	23.6	24.1	24.5	25.1	26.3
8H	22.8	23.3	23.8	24.3	25.5	24.1	24.6	25.1	25.6	26.9
Variations with the observer position at spacings:										
S = 1.0H	+ 0.1 / - 0.2					+ 0.1 / - 0.1				
1.5H	+ 0.4 / - 0.4					+ 0.1 / - 0.1				
2.0H	+ 0.3 / - 0.8					+ 0.3 / - 0.3				

CIE Pub.117, 552.3 lm Total Lamp Luminous Flux Correct (8log(F/F0) = -2.1)

C Range: 0 - 360DEG  
 C Interval: 10.0DEG  
 Test Speed: HIGH  
 Temperature:25.3DEG  
 Operators:LQL  
 Test Date:15 May 2019

g Range: 0 - 180DEG  
 g Interval: 1.0DEG  
 Test System:EVERFINE GO-2000B\_V1 SYSTEM V2.0.403  
 Humidity:65.0%  
 Test Distance:10.320m [K=1.0000]  
 Remarks: Zigen BGC Q4-500mA-12W

UTILIZATION FACTORS TABLE

Test:U:230.44V I:0.0597A P:10.577W PF:0.7684 Freq:49.99Hz Lamp Flux:552.336x1 lm		
NAME: Stanley 35 2x5W LED	TYPE:	WEIGHT:
SPEC.:	DIM.:	SERIAL No.:
MFR.: CG LIGHTING	SUR.:	Shielding Angle:

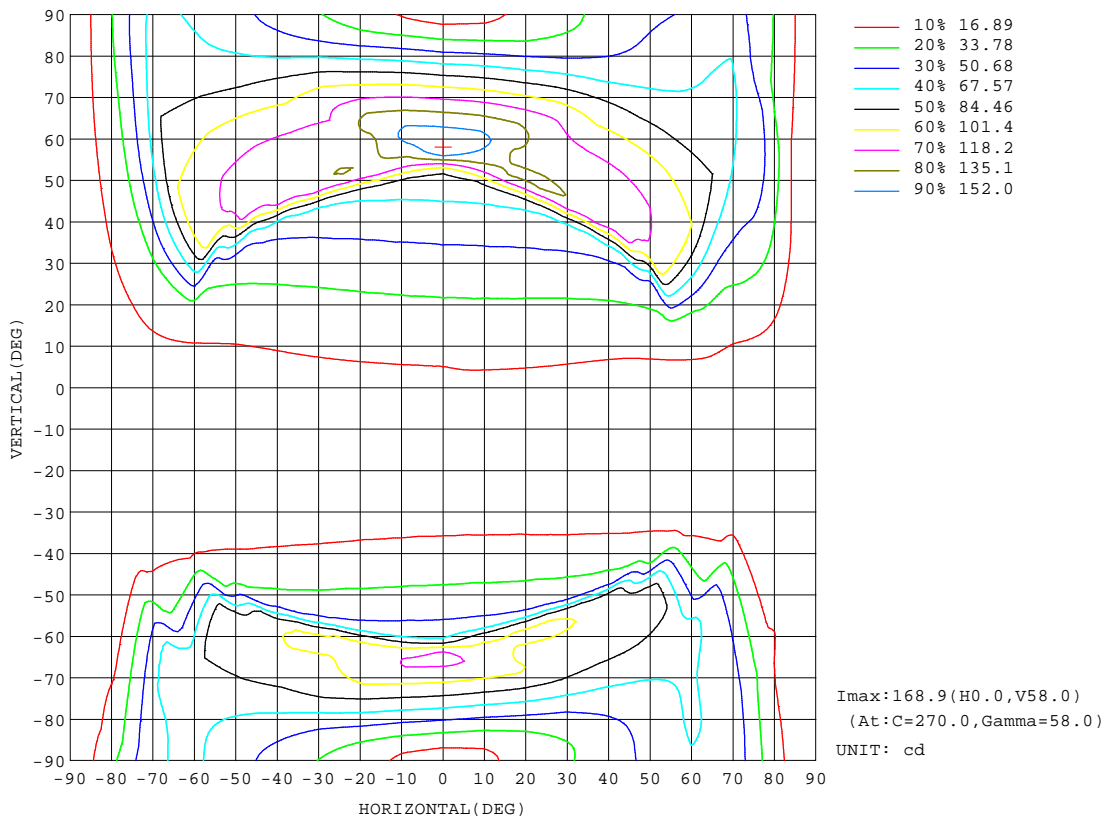
REFLECTANCE										
Ceiling	0.8	0.8	0.8	0.7	0.7	0.7	0.5	0.5	0.5	0
Walls	0.7	0.5	0.3	0.7	0.5	0.3	0.7	0.5	0.3	0
Working plane	0.2	0.2	0.2	0.2	0.2	0.2	0.2	0.2	0.2	0
ROOM INDEX	UTILIZATION FACTORS(PERCENT) $k(RI) \times RCR = 5$									
k = 0.60	34	20	13	32	20	12	29	18	11	4
0.80	42	27	18	39	26	17	35	23	16	6
1.00	49	34	24	46	32	23	40	31	20	9
1.25	56	41	31	52	39	29	45	34	26	12
1.50	62	47	37	58	44	35	50	39	31	15
2.00	70	57	46	65	53	44	56	46	39	21
2.50	76	64	54	71	59	51	61	52	44	25
3.00	81	69	60	75	65	56	64	56	49	29
4.00	87	77	69	80	72	65	69	62	56	34
5.00	91	82	75	84	77	70	72	66	61	38
ROOM INDEX	UF(total)									Direct
According to DIN EN 13032-2 2004			Suspended				SHRNOM = 1.25			

C Range: 0 - 360DEG  
 C Interval: 10.0DEG  
 Test Speed: HIGH  
 Temperature:25.3DEG  
 Operators:LQL  
 Test Date:15 May 2019

g Range: 0 - 180DEG  
 g Interval: 1.0DEG  
 Test System:EVERFINE GO-2000B\_V1 SYSTEM V2.0.403  
 Humidity:65.0%  
 Test Distance:10.320m [K=1.0000]  
 Remarks: Zigen BGC Q4-500mA-12W

ISOCANDELA DIAGRAM

Test:U:230.44V I:0.0597A P:10.577W PF:0.7684 Freq:49.99Hz Lamp Flux:552.336x1 lm		
NAME: Stanley 35 2x5W LED	TYPE:	WEIGHT:
SPEC.:	DIM.:	SERIAL No.:
MFR.: CG LIGHTING	SUR.:	Shielding Angle:



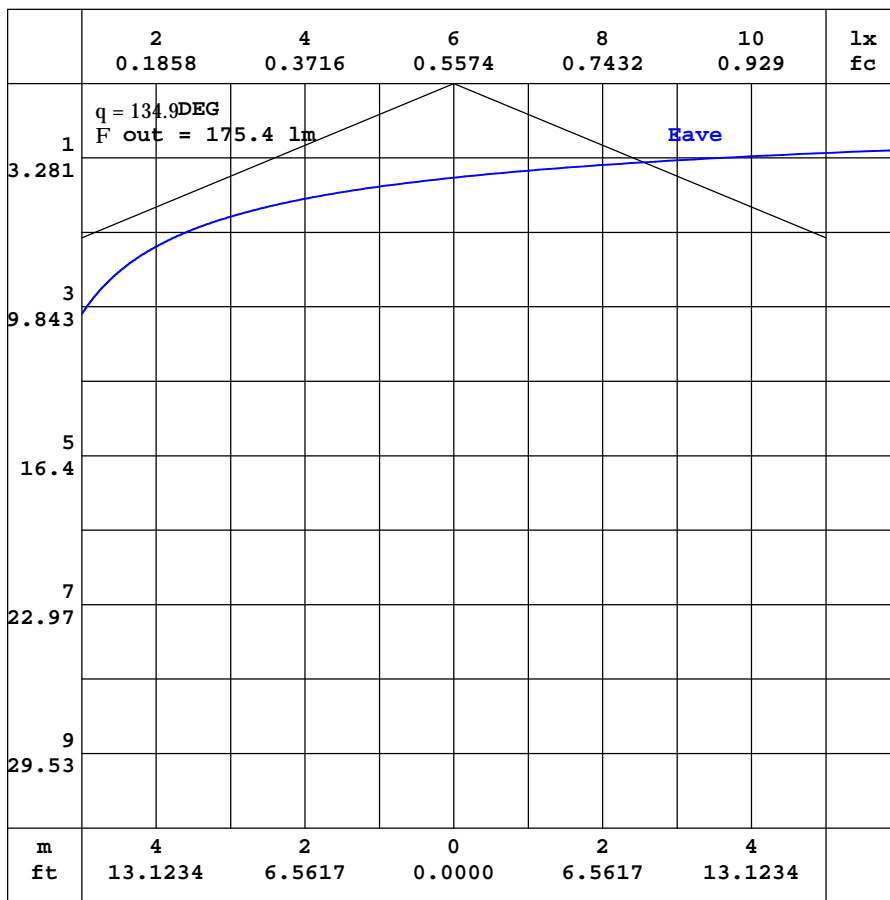
C Range: 0 - 360DEG  
 C Interval: 10.0DEG  
 Test Speed: HIGH  
 Temperature:25.3DEG  
 Operators:LQL  
 Test Date:15 May 2019

Range: 0 - 180DEG  
 Interval: 1.0DEG  
 Test System:EVERFINE GO-2000B\_V1 SYSTEM V2.0.403  
 Humidity:65.0%  
 Test Distance:10.320m [K=1.0000]  
 Remarks: Zigen BGC Q4-500mA-12W



AAI CURVES

Test:U:230.44V I:0.0597A P:10.577W PF:0.7684 Freq:49.99Hz Lamp Flux:552.336x1 lm		
NAME: Stanley 35 2x5W LED	TYPE:	WEIGHT:
SPEC.:	DIM.:	SERIAL No.:
MFR.: CG LIGHTING	SUR.:	Shielding Angle:



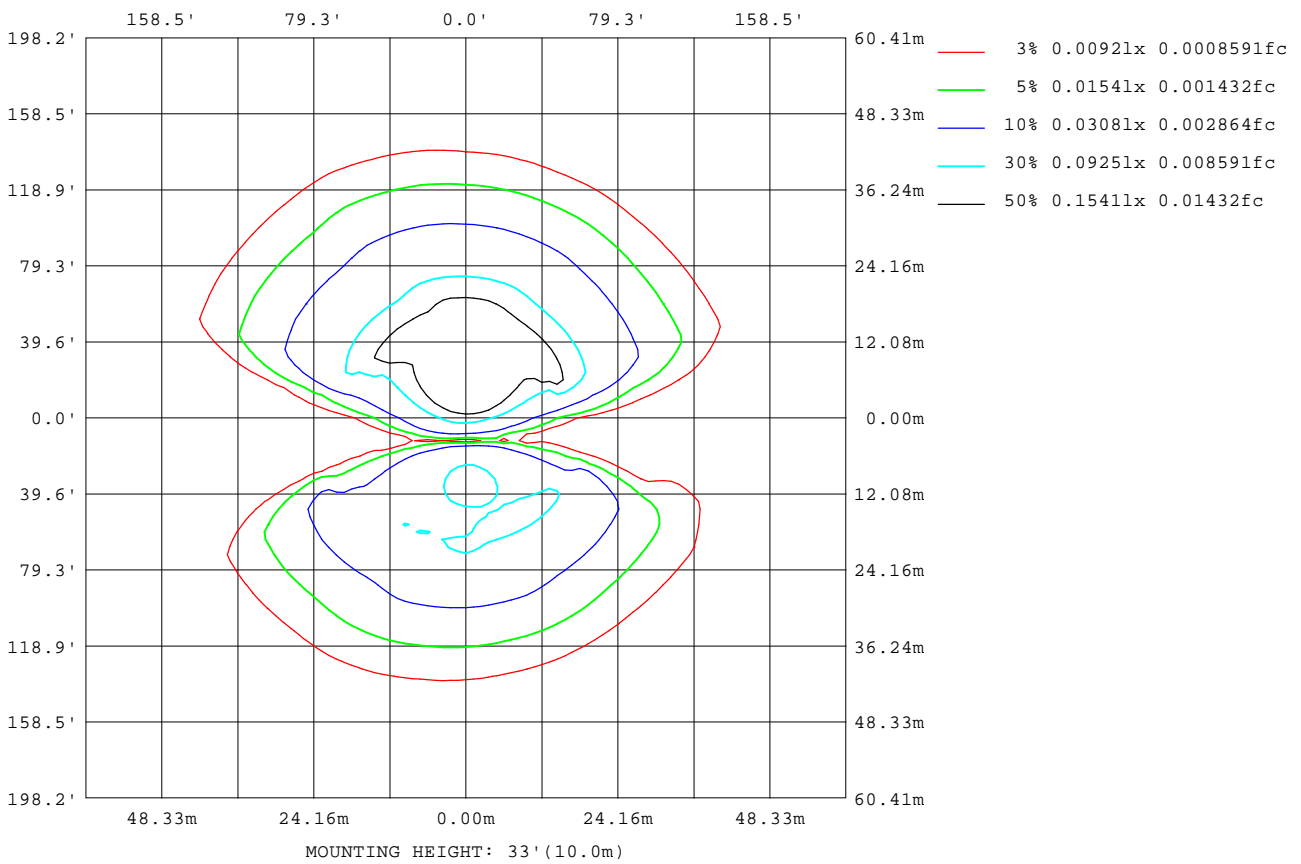
Note: The Curves indicate the illuminated area and the average illumination when the luminaire is at different distance.

C Range: 0 - 360DEG  
 C Interval: 10.0DEG  
 Test Speed: HIGH  
 Temperature: 25.3DEG  
 Operators: LQL  
 Test Date: 15 May 2019

Range: 0 - 180DEG  
 Interval: 1.0DEG  
 Test System: EVERFINE GO-2000B\_V1 SYSTEM V2.0.403  
 Humidity: 65.0%  
 Test Distance: 10.320m [K=1.0000]  
 Remarks: Zigen BGC Q4-500mA-12W

**ISOLUX DIAGRAM**

Test:U:230.44V I:0.0597A P:10.577W PF:0.7684 Freq:49.99Hz Lamp Flux:552.336x1 lm		
NAME: Stanley 35 2x5W LED	TYPE:	WEIGHT:
SPEC.:	DIM.:	SERIAL No.:
MFR.: CG LIGHTING	SUR.:	Shielding Angle:



C Range: 0 - 360DEG  
 C Interval: 10.0DEG  
 Test Speed: HIGH  
 Temperature:25.3DEG  
 Operators:LQL  
 Test Date:15 May 2019

Range: 0 - 180DEG  
 Interval: 1.0DEG  
 Test System:EVERFINE GO-2000B\_V1 SYSTEM V2.0.403  
 Humidity:65.0%  
 Test Distance:10.320m [K=1.0000]  
 Remarks: Zigen BGC Q4-500mA-12W

LED Avg.L Report

Test:U:230.44V I:0.0597A P:10.577W PF:0.7684 Freq:49.99Hz Lamp Flux:552.336x1 lm		
NAME: Stanley 35 2x5W LED	TYPE:	WEIGHT:
SPEC.:	DIM.:	SERIAL No.:
MFR.: CG LIGHTING	SUR.:	Shielding Angle:

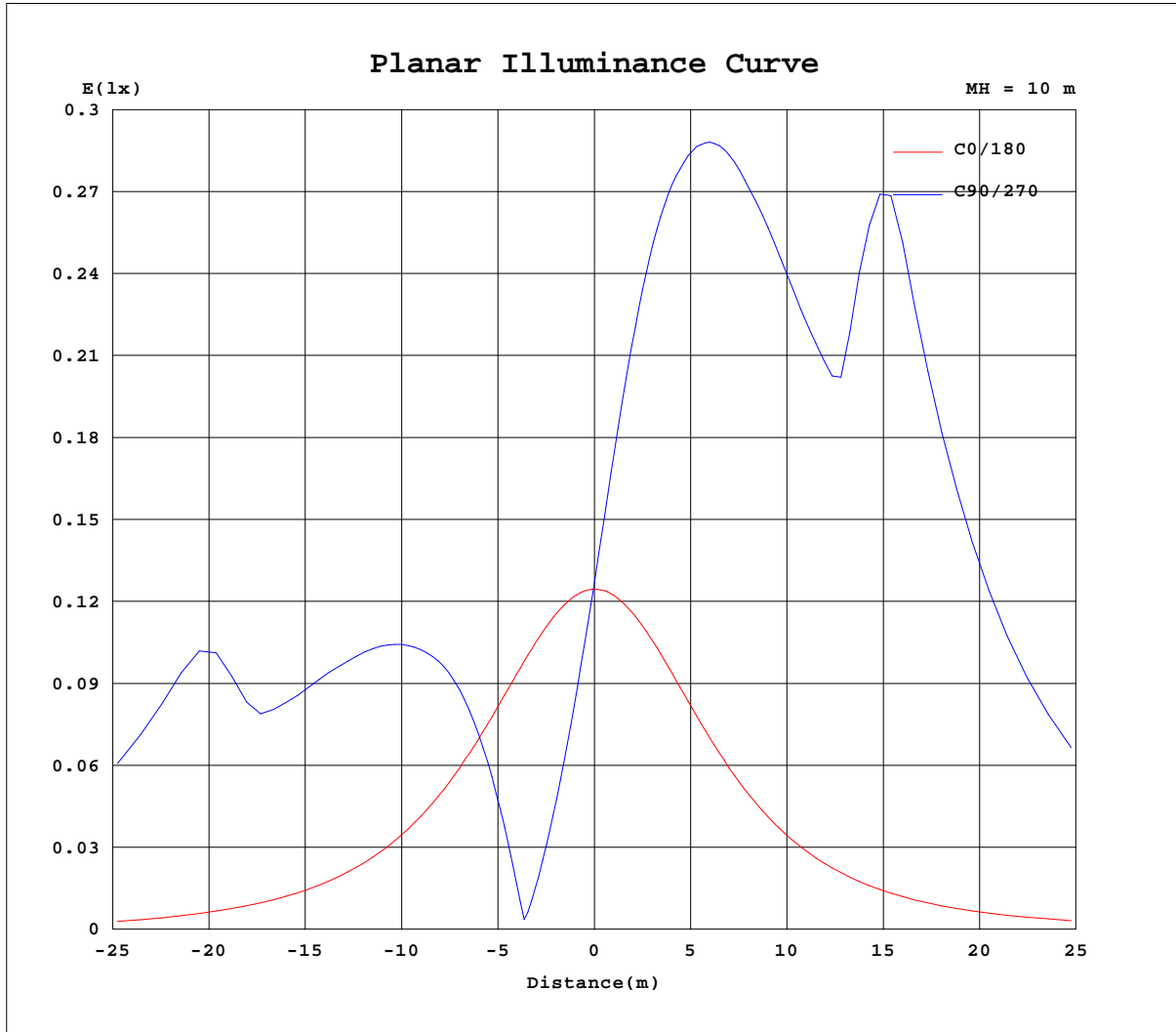
AvgL	cd/m2
L_0~180(65)av	161
L_0~180(75)av	161
L_0~180(85)av	196
L_90~270(65)av	3155
L_90~270(75)av	3228
L_90~270(85)av	3069
L_45(65)av	2568
L_45(75)av	3255
L_45(85)av	6248

Standard: GB/T 29293-2012

C Range: 0 - 360DEG  
 C Interval: 10.0DEG  
 Test Speed: HIGH  
 Temperature:25.3DEG  
 Operators:LQL  
 Test Date:15 May 2019

g Range: 0 - 180DEG  
 Interval: 1.0DEG  
 Test System:EVERFINE GO-2000B\_V1 SYSTEM V2.0.403  
 Humidity:65.0%  
 Test Distance:10.320m [K=1.0000]  
 Remarks: Zigen BGC Q4-500mA-12W

Planar Illuminance Curve



C Range: 0 - 360DEG  
 C Interval: 10.0DEG  
 Test Speed: HIGH  
 Temperature: 25.3DEG  
 Operators: LQL  
 Test Date: 15 May 2019

Page Range: 0 - 180DEG  
 Interval: 1.0DEG  
 Test System: EVERFINE GO-2000B\_V1 SYSTEM V2.0.403  
 Humidity: 65.0%  
 Test Distance: 10.320m [K=1.0000]  
 Remarks: Zigen BGC Q4-500mA-12W

LUMINOUS DISTRIBUTION INTENSITY DATA

Test:U:230.44V I:0.0597A P:10.577W PF:0.7684 Freq:49.99Hz Lamp Flux:552.336x1 lm		
NAME: Stanley 35 2x5W LED	TYPE:	WEIGHT:
SPEC.:	DIM.:	SERIAL No.:
MFR.: CG LIGHTING	SUR.:	Shielding Angle:

Table--1

UNIT: cd

C(DEG) g (DEG)	0	10	20	30	40	50	60	70	80	90	100	110	120	130	140	150	160	170	180
0	12.5	12.5	12.4	12.5	12.5	12.5	12.5	12.6	12.6	12.7	12.7	12.9	13.0	13.2	13.3	13.5	13.5	13.6	12.5
5	12.4	11.8	11.1	10.6	10.0	9.68	9.32	9.13	8.95	9.01	9.09	9.42	9.77	10.3	10.8	11.5	12.1	12.9	12.4
10	12.3	11.0	9.74	8.70	7.74	7.02	6.38	6.00	5.72	5.72	5.84	6.27	6.78	7.61	8.48	9.57	10.7	12.1	12.3
15	12.1	10.1	8.37	6.87	5.56	4.58	3.74	3.22	2.84	2.81	2.94	3.47	4.11	5.11	6.30	7.73	9.35	11.2	12.1
20	11.8	9.26	6.99	5.12	3.54	2.33	1.39	0.76	0.47	0.44	0.47	0.96	1.72	2.84	4.21	5.93	7.94	10.3	11.9
25	11.5	8.31	5.62	3.43	1.67	0.60	2.64	4.06	4.94	5.08	4.61	3.43	1.78	0.79	2.30	4.23	6.56	9.36	11.6
30	11.1	7.33	4.27	1.84	1.36	4.40	7.12	8.95	10.1	10.3	9.75	8.21	6.09	3.21	0.59	2.63	5.18	8.37	11.2
35	10.7	6.32	2.96	0.57	4.89	8.76	12.1	14.3	15.8	16.0	15.4	13.5	10.9	7.31	3.42	1.12	3.84	7.35	10.8
40	10.3	5.28	1.69	3.40	8.91	13.6	17.7	20.4	22.0	22.2	21.4	19.2	16.1	11.8	7.09	1.84	2.55	6.28	10.3
45	9.80	4.23	0.60	6.92	13.7	19.4	24.4	27.5	29.4	29.5	28.5	25.7	22.0	16.9	11.3	4.93	1.33	5.21	9.75
50	9.25	3.14	2.95	11.3	20.0	27.3	33.1	36.4	38.3	38.2	37.0	33.8	29.3	23.0	16.2	8.58	1.21	4.11	9.17
55	8.63	2.08	6.34	17.5	29.9	38.7	45.2	47.9	49.2	48.5	47.1	43.6	38.8	31.3	22.8	13.0	3.92	3.01	8.52
60	7.85	1.03	10.8	28.1	75.9	99.1	102	100	85.8	63.1	61.5	59.5	53.5	43.9	33.0	19.5	7.39	1.91	7.78
65	6.72	1.50	17.5	84.5	96.5	99.1	99.7	100	111	125	115	102	103	102	85.7	30.9	12.0	0.84	6.93
70	5.18	4.23	26.5	83.8	88.5	89.5	89.8	101	104	107	109	109	98.0	99.8	98.5	88.7	19.1	2.25	5.83
75	3.93	7.52	62.8	75.4	73.3	72.5	74.6	76.7	77.5	81.0	84.3	89.8	92.0	88.6	90.3	88.1	29.5	5.37	4.39
80	2.80	11.9	62.4	69.8	61.4	55.1	50.0	49.1	49.0	52.0	56.2	62.7	67.6	72.4	75.1	78.9	67.7	9.03	3.08
85	1.46	19.8	62.2	69.6	56.0	44.5	35.5	28.6	23.7	25.0	29.3	36.9	45.1	54.4	63.0	71.8	66.8	14.3	1.96
90	0.92	21.9	62.7	65.2	54.8	42.7	31.9	21.9	14.2	8.73	14.3	23.4	33.4	44.4	56.6	70.7	65.8	29.3	0.74
95	2.06	26.5	63.6	65.7	59.2	48.3	37.8	28.1	21.7	17.6	17.9	22.9	32.2	42.6	54.7	66.1	64.9	24.9	1.48
100	3.20	21.1	58.1	71.1	68.2	60.1	51.6	43.9	39.3	35.3	34.2	35.4	40.6	49.1	58.1	63.3	62.8	32.0	2.79
105	4.21	18.4	48.5	68.8	75.1	73.4	68.8	63.0	59.5	56.1	54.8	53.9	56.8	61.1	66.6	69.1	60.0	27.9	3.97
110	4.80	17.6	41.3	61.5	74.9	80.6	81.1	78.6	76.2	73.8	72.7	72.0	73.4	74.0	73.8	68.1	50.5	21.7	4.95
115	5.02	17.6	35.4	54.2	69.4	80.0	85.3	87.0	86.7	85.5	84.9	84.0	82.8	79.8	73.5	61.4	43.1	20.0	5.65
120	5.17	17.6	32.8	48.0	62.5	74.7	82.8	87.8	89.6	90.0	89.3	87.3	83.8	77.7	67.7	54.0	36.8	20.2	5.82
125	5.43	17.4	30.8	41.8	55.8	67.8	76.8	83.1	86.3	87.6	86.7	84.1	79.0	71.5	60.6	47.5	33.6	19.7	5.91
130	5.83	17.1	29.2	38.2	49.2	60.4	69.0	75.6	79.5	81.2	80.3	77.4	71.8	64.1	53.7	41.3	31.4	19.2	6.14
135	6.38	16.3	27.4	35.7	43.6	52.6	60.4	66.6	70.2	72.2	71.4	68.6	63.4	56.4	46.8	37.7	30.0	18.7	6.56
140	7.10	15.4	25.3	32.9	39.5	46.2	52.3	57.4	60.6	62.2	61.5	59.3	54.7	48.7	41.8	35.2	28.0	18.2	7.13
145	7.89	14.9	23.1	29.8	35.5	41.1	46.0	50.1	52.6	53.8	53.2	51.2	47.5	43.0	37.8	32.4	25.7	17.4	7.79
150	8.62	14.5	21.2	26.9	31.8	36.4	40.3	43.6	45.5	46.6	46.0	44.5	41.6	38.0	33.8	29.1	23.2	16.5	8.50
155	8.53	14.0	19.3	24.1	28.2	31.9	35.1	37.6	39.1	39.8	39.5	38.3	36.2	33.3	29.9	25.8	21.1	15.6	8.89
160	7.30	13.5	17.6	21.6	24.8	27.7	30.0	31.9	33.1	33.6	33.4	32.5	30.9	28.8	26.1	22.4	18.0	13.3	8.01
165	6.71	10.5	15.8	18.8	21.4	23.6	25.3	26.7	27.4	27.8	27.7	27.2	26.1	24.0	20.1	16.3	12.9	10.1	7.24
170	6.35	8.26	13.6	16.0	17.7	19.4	20.6	21.6	22.1	22.4	22.3	22.0	18.2	15.1	12.9	11.1	9.51	8.12	6.59
175	6.47	7.98	10.9	13.1	14.2	15.0	15.6	16.1	16.3	16.5	13.4	10.9	9.87	9.07	8.37	7.67	7.03	6.48	6.45
180	8.86	8.88	8.88	8.89	8.91	8.87	8.68	7.79	5.19	4.86	4.93	4.93	5.02	5.05	5.84	6.80	7.57	7.94	8.87

C Range: 0 - 360DEG  
 C Interval: 10.0DEG  
 Test Speed: HIGH  
 Temperature:25.3DEG  
 Operators:LQL  
 Test Date:15 May 2019

g Range: 0 - 180DEG  
 Interval: 1.0DEG  
 Test System:EVERFINE GO-2000B\_V1 SYSTEM V2.0.403  
 Humidity:65.0%  
 Test Distance:10.320m [K=1.0000]  
 Remarks: Zigen BGC Q4-500mA-12W

LUMINOUS DISTRIBUTION INTENSITY DATA

Test:U:230.44V I:0.0597A P:10.577W PF:0.7684 Freq:49.99Hz Lamp Flux:552.336x1 lm		
NAME: Stanley 35 2x5W LED	TYPE:	WEIGHT:
SPEC.:	DIM.:	SERIAL No.:
MFR.: CG LIGHTING	SUR.:	Shielding Angle:

Table--2

UNIT: cd

C(DEG) g (DEG)	190	200	210	220	230	240	250	260	270	280	290	300	310	320	330	340	350		
0	12.5	12.4	12.5	12.5	12.5	12.5	12.6	12.6	12.7	12.7	12.9	13.0	13.2	13.3	13.5	13.5	13.6		
5	13.1	13.8	14.5	15.1	15.7	16.1	16.5	16.7	16.9	16.9	16.9	16.6	16.4	16.0	15.5	14.9	14.3		
10	13.7	15.1	16.5	17.8	19.0	20.0	20.9	21.3	21.6	21.5	21.3	20.6	19.9	18.8	17.6	16.2	14.9		
15	14.2	16.4	18.6	20.7	22.6	24.2	25.5	26.2	26.6	26.4	25.9	24.9	23.6	21.8	19.8	17.6	15.4		
20	14.7	17.7	20.8	23.7	26.4	28.6	30.4	31.4	31.9	31.7	30.9	29.5	27.5	25.0	22.2	19.1	16.0		
25	15.2	19.1	23.1	26.9	30.4	33.3	35.6	37.0	37.7	37.3	36.4	34.4	31.8	28.4	24.7	20.6	16.5		
30	15.6	20.5	25.6	30.3	34.9	38.5	41.5	43.4	44.3	43.9	42.7	40.1	36.8	32.4	27.5	22.3	17.0		
35	16.0	22.0	28.3	34.4	40.1	44.5	48.2	50.3	51.6	51.1	49.7	46.7	42.7	37.3	31.1	24.2	17.7		
40	16.5	23.8	31.8	39.2	46.0	51.2	55.5	57.9	59.3	58.8	57.6	54.3	49.9	43.3	35.8	27.0	18.5		
45	17.1	26.3	36.3	45.2	53.2	59.2	63.8	66.3	67.8	67.6	66.7	63.7	59.0	51.4	42.2	31.1	19.8		
50	17.9	29.9	42.3	53.4	63.5	71.8	78.5	77.5	78.4	81.5	100	108	105	76.3	52.5	37.5	22.4		
55	19.6	35.5	52.3	90.5	129	135	134	129	137	138	136	135	134	131	123	54.3	26.2		
60	22.3	46.2	122	130	132	132	132	155	163	159	137	128	126	125	121	111	31.0		
65	25.6	110	122	125	124	123	139	146	142	140	136	121	114	114	113	106	35.2		
70	28.4	106	115	114	112	117	123	120	116	113	110	109	98.5	97.5	97.5	95.0	35.9		
75	28.6	97.3	101	97.8	95.1	101	95.6	91.4	86.1	84.0	81.6	81.4	79.7	78.8	80.7	84.0	44.0		
80	28.2	86.4	84.0	79.5	76.8	73.2	66.5	61.6	55.8	54.4	53.1	54.4	57.5	62.9	68.5	75.2	52.1		
85	28.7	78.1	72.0	64.7	56.3	48.4	39.7	34.0	28.5	27.8	29.9	36.6	44.0	53.4	61.8	70.1	46.0		
90	33.1	73.4	64.8	55.4	44.9	34.6	24.6	15.9	9.37	13.3	20.4	30.0	39.2	47.1	53.2	58.9	33.1		
95	23.9	60.8	55.6	48.7	40.4	31.5	22.6	15.2	14.6	17.6	24.4	32.9	41.1	47.6	55.0	54.8	24.0		
100	19.6	52.3	54.0	48.3	43.3	37.0	32.4	30.4	32.3	34.9	40.1	45.1	51.6	57.4	59.2	41.8	9.68		
105	8.26	40.6	57.1	57.4	53.8	50.7	49.9	49.7	52.0	54.0	57.6	60.3	62.9	61.6	48.8	28.1	4.78		
110	3.64	26.3	46.5	59.4	62.8	63.5	64.5	65.2	66.8	67.9	68.9	68.1	64.1	53.6	36.7	16.6	1.53		
115	0.75	13.1	34.1	50.2	60.8	66.7	69.7	71.4	72.2	71.9	69.9	65.3	55.8	42.8	26.8	10.5	0.60		
120	0.73	8.13	19.4	37.7	51.0	59.9	64.9	67.7	67.9	66.6	62.6	55.9	45.5	33.3	18.0	6.52	1.06		
125	0.95	5.23	14.2	27.0	36.8	49.5	55.2	58.6	58.8	57.3	52.6	45.6	35.8	24.1	12.5	3.20	1.67		
130	1.45	2.03	10.1	19.2	29.2	35.7	44.4	48.0	48.3	46.6	41.9	35.3	26.4	17.1	8.16	0.42	2.16		
135	2.15	0.51	6.19	13.3	20.5	27.4	30.3	36.5	36.8	35.3	31.1	25.7	18.8	11.7	4.31	0.49	2.75		
140	2.84	0.63	2.46	8.57	13.9	19.0	22.5	26.1	26.6	25.5	22.3	18.2	12.7	6.94	0.74	1.18	3.40		
145	3.58	0.87	0.46	4.10	8.56	12.3	14.9	16.0	18.1	17.4	15.0	11.7	7.32	2.57	0.37	1.76	4.15		
150	4.35	1.46	0.51	0.42	3.55	6.76	8.84	9.74	10.0	10.0	8.30	5.79	2.26	0.33	0.98	2.26	5.00		
155	4.57	2.21	0.87	0.46	0.39	1.43	3.12	4.23	4.15	3.57	2.21	0.49	0.28	0.80	1.63	2.71	5.09		
160	4.63	2.99	1.44	0.61	0.49	0.33	0.30	0.25	0.22	0.20	0.22	0.41	0.91	1.53	2.25	3.22	5.00		
165	5.12	3.64	2.60	1.59	0.83	0.52	0.35	0.39	0.84	0.95	1.12	1.46	1.77	2.28	2.88	4.00	5.48		
170	5.37	4.40	3.56	3.09	2.44	1.97	1.56	1.33	1.20	1.18	2.49	3.20	3.25	3.10	3.63	4.45	5.42		
175	5.59	5.05	4.55	4.11	3.73	3.59	3.38	3.18	2.91	2.73	2.41	2.55	3.39	3.92	4.53	4.95	5.44		
180	8.86	8.84	8.84	8.83	8.77	8.51	7.58	4.93	4.79	4.82	4.85	4.92	5.02	5.79	6.81	7.54	7.94		

C Range: 0 - 360DEG  
 C Interval: 10.0DEG  
 Test Speed: HIGH  
 Temperature:25.3DEG  
 Operators:LQL  
 Test Date:15 May 2019

g Range: 0 - 180DEG  
 Interval: 1.0DEG  
 Test System:EVERFINE GO-2000B\_V1 SYSTEM V2.0.403  
 Humidity:65.0%  
 Test Distance:10.320m [K=1.0000]  
 Remarks: Zigen BGC Q4-500mA-12W