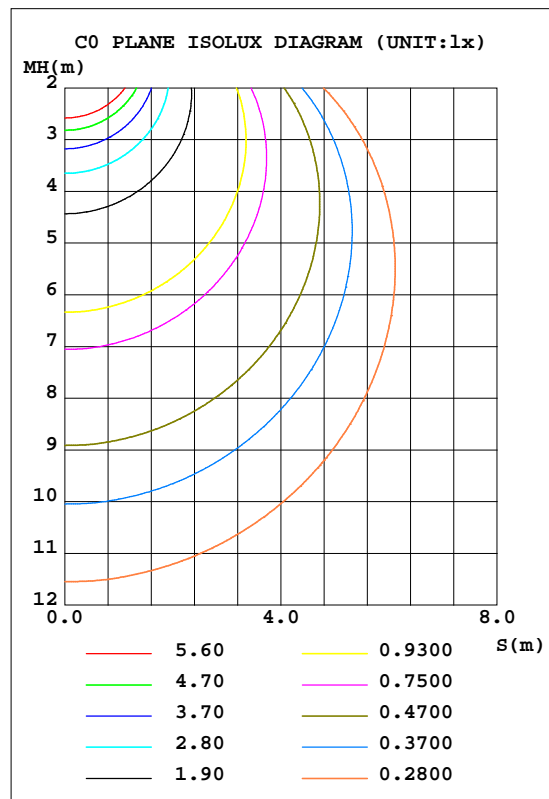
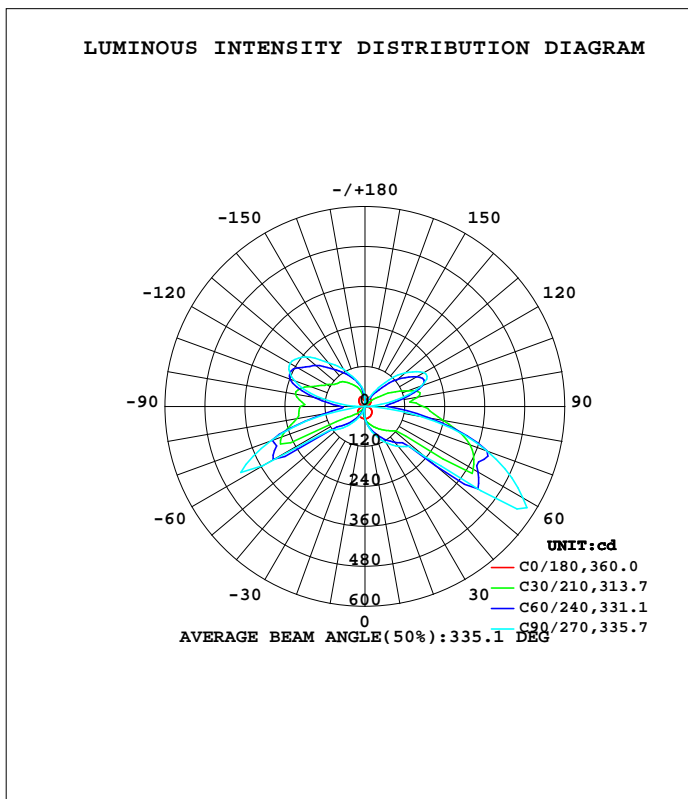


LUMINAIRE PHOTOMETRIC TEST REPORT

Test:U:230.59V I:0.0878A P:19.829W PF:0.9788 Freq:49.99Hz Lamp Flux:1630.62x1 lm		
NAME: Stanley 35 2x9W LED wall light	TYPE:	WEIGHT:
SPEC.:	DIM.:	SERIAL No.:
MFR.: CG LIGHTING	SUR.:	Shielding Angle:

DATA OF LAMP		PHOTOMETRIC DATA				Eff: 82.23 lm/W
MODEL	1745CD-BWV02	Imax(cd)	573.2	S/MH(C0/180)	1.35	
NOMINAL POWER(W)		LOR(%)	100.0	S/MH(C90/270)	0.30	
RATED VOLTAGE(V)	230	TOTAL FLUX(lm)	1630.6	h UP, DN(C0-180)	16.2, 37.2	
NOMINAL FLUX(lm)	1630.62	CIE CLASS	DIFFUSE	h UP, DN(C180-360)	25.9, 20.7	
LAMPS INSIDE	1	h up(%)	42.1	CIBSE SHR NOM	1.50	
TEST VOLTAGE(V)	230	h down(%)	57.9	CIBSE SHR MAX	1.55	



C Range: 0 - 360DEG
 C Interval: 10.0DEG
 Test Speed: HIGH
 Temperature:25.3DEG
 Operators:LQL
 Test Date:04 April 2023

Range: 0 - 180DEG
 Interval: 2.0DEG
 Test System:EVERFINE GO-2000B_V1 SYSTEM V2.0.403
 Humidity:65.0%
 Test Distance:10.365m [K=1.0000]
 Remarks: ZG1BGX30KH0 D50025NTF

ZONAL FLUX DIAGRAM

ZONAL FLUX DIAGRAM:

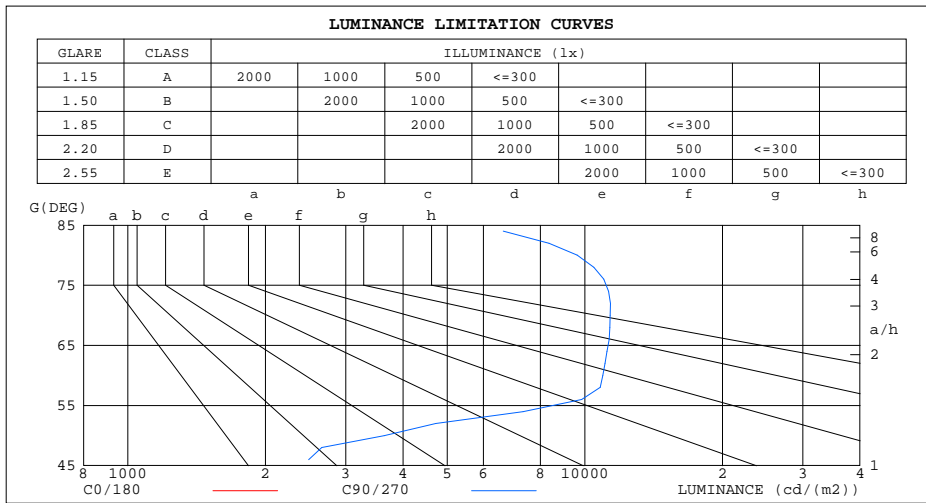
g	C0	C45	C90	C135	C180	C225	C270	C315	g	F zone	F total	%lum,lamp
10	36.88	54.56	61.51	52.49	36.88	21.96	15.51	20.16	0- 10	3.503	3.503	0.21,0.21
20	35.50	74.48	91.93	72.65	35.63	8.733	5.945	7.343	10- 20	11.06	14.57	0.89,0.89
30	33.45	96.21	124.3	94.97	33.70	11.04	35.65	11.77	20- 30	22.17	36.73	2.25,2.25
40	30.84	120.1	156.2	120.0	31.24	35.31	70.67	35.45	30- 40	40.56	77.30	4.74,4.74
50	27.64	176.2	233.9	213.2	28.23	67.20	107.2	65.72	40- 50	68.59	145.9	8.95,8.95
60	23.68	392.9	547.5	385.8	24.39	270.6	355.5	207.3	50- 60	174.5	320.4	19.7,19.7
70	17.51	328.8	388.8	319.6	17.42	271.9	301.3	273.0	60- 70	277.9	598.3	36.7,36.7
80	9.522	212.7	167.0	194.2	9.832	164.6	84.47	170.8	70- 80	221.1	819.5	50.3,50.3
90	2.581	127.5	10.99	119.3	2.643	123.3	14.59	116.8	80- 90	124.8	944.3	57.9,57.9
100	8.268	131.5	71.19	140.8	8.290	190.9	122.6	175.4	90-100	111.3	1056	64.7,64.7
110	14.21	178.2	179.6	179.2	13.88	227.3	224.7	224.4	100-110	153.0	1209	74.1,74.1
120	19.44	140.2	204.1	137.7	19.17	185.0	260.1	198.8	110-120	154.0	1362	83.6,83.6
130	23.84	84.74	157.9	83.34	24.04	153.8	231.7	158.5	120-130	117.1	1480	90.7,90.7
140	27.90	39.47	93.58	40.41	28.23	121.8	172.4	122.8	130-140	75.22	1555	95.3,95.3
150	31.27	9.212	41.82	10.25	31.49	96.71	130.2	96.78	140-150	42.46	1597	98,98
160	27.63	3.028	2.348	2.843	28.28	73.80	88.22	73.28	150-160	21.58	1619	99.3,99.3
170	19.64	8.065	4.903	9.091	20.02	40.45	59.54	52.32	160-170	9.463	1628	99.9,99.9
180	21.17	15.22	16.19	29.17	21.14	15.36	16.80	29.67	170-180	2.346	1631	100,100
DEG	LUMINOUS INTENSITY:cd								UNIT:lm			

C Range: 0 - 360DEG
 C Interval: 10.0DEG
 Test Speed: HIGH
 Temperature:25.3DEG
 Operators:LQL
 Test Date:04 April 2023

g Range: 0 - 180DEG
 Interval: 2.0DEG
 Test System:EVERFINE GO-2000B_V1 SYSTEM V2.0.403
 Humidity:65.0%
 Test Distance:10.365m [K=1.0000]
 Remarks: ZG1BGX30KH0 D50025NTF

LUMINANCE LIMITATION CURVES

Test:U:230.59V I:0.0878A P:19.829W PF:0.9788 Freq:49.99Hz Lamp Flux:1630.62x1 lm		
NAME: Stanley 35 2x9W LED wall light	TYPE:	WEIGHT:
SPEC.:	DIM.:	SERIAL No.:
MFR.: CG LIGHTING	SUR.:	Shielding Angle:



LUMINANCE cd/(m2)		
G(DEG)	C0/180	C90/270
85	788	7950
80	548	9616
75	536	12009
70	512	11369
65	512	11605
60	474	10949
55	456	7505
50	430	3639
45	419	2370

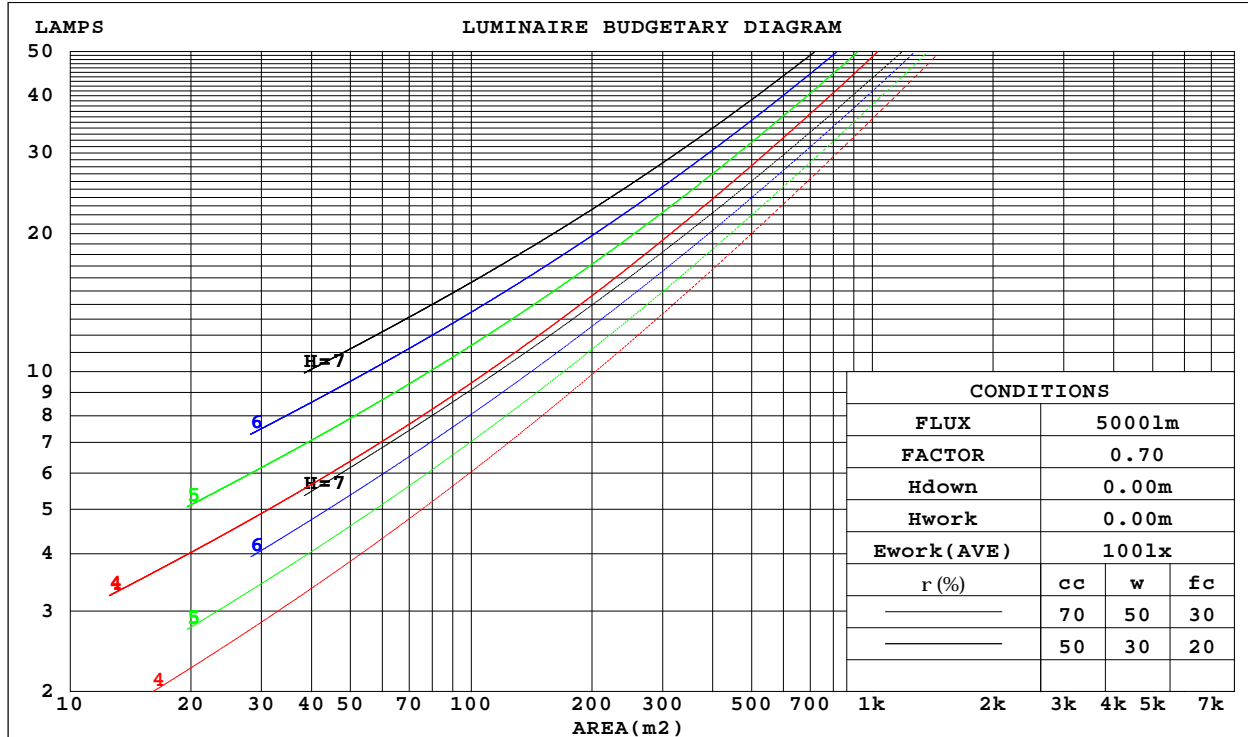
C Range: 0 - 360DEG
 C Interval: 10.0DEG
 Test Speed: HIGH
 Temperature:25.3DEG
 Operators:LQL
 Test Date:04 April 2023

G Range: 0 - 180DEG
 G Interval: 2.0DEG
 Test System:EVERFINE GO-2000B_V1 SYSTEM V2.0.403
 Humidity:65.0%
 Test Distance:10.365m [K=1.0000]
 Remarks: ZG1BGX30KH0 D50025NTF

CU AND LUMINAIRE BUDGETARY ESTIMATE DIAGRAM

Test:U:230.59V I:0.0878A P:19.829W PF:0.9788 Freq:49.99Hz Lamp Flux:1630.62x1 lm		
NAME: Stanley 35 2x9W LED wall light	TYPE:	WEIGHT:
SPEC.:	DIM.:	SERIAL No.:
MFR.: CG LIGHTING	SUR.:	Shielding Angle:

r _{cc}	80%			70%			50%			30%			10%			0
r _w	50%	30%	10%	50%	30%	10%	50%	30%	10%	50%	30%	10%	50%	30%	10%	0
r _{fc}	20%			20%			20%			20%			20%			0
RCR	RCR:Room Cavity Ratio						Coefficients of Utilization(CU)									
0.0	1.09	1.09	1.09	1.02	1.02	1.02	.88	.88	.88	.75	.75	.75	.63	.63	.63	.58
1.0	.87	.81	.76	.81	.75	.71	.69	.65	.61	.58	.54	.51	.47	.45	.43	.37
2.0	.72	.63	.56	.66	.58	.52	.56	.49	.44	.46	.41	.37	.37	.33	.30	.25
3.0	.60	.50	.42	.55	.46	.39	.46	.39	.33	.38	.32	.27	.30	.25	.22	.17
4.0	.51	.41	.33	.47	.38	.31	.39	.32	.26	.32	.26	.21	.25	.20	.16	.12
5.0	.45	.34	.27	.41	.32	.25	.34	.26	.21	.27	.21	.17	.21	.17	.13	.09
6.0	.39	.29	.22	.36	.27	.20	.30	.22	.17	.24	.18	.13	.19	.14	.10	.07
7.0	.35	.25	.19	.32	.23	.17	.27	.19	.14	.21	.16	.11	.17	.12	.08	.05
8.0	.31	.22	.16	.29	.20	.15	.24	.17	.12	.19	.14	.09	.15	.10	.07	.04
9.0	.28	.20	.14	.26	.18	.13	.22	.15	.10	.18	.12	.08	.14	.09	.06	.04
10.0	.26	.17	.12	.24	.16	.11	.20	.13	.09	.16	.11	.07	.13	.08	.05	.03



C Range: 0 - 360DEG
 C Interval: 10.0DEG
 Test Speed: HIGH
 Temperature:25.3DEG
 Operators:LQL
 Test Date:04 April 2023

Range: 0 - 180DEG
 Interval: 2.0DEG
 Test System:EVERFINE GO-2000B_V1 SYSTEM V2.0.403
 Humidity:65.0%
 Test Distance:10.365m [K=1.0000]
 Remarks: ZG1BGX30KH0 D50025NTF

WEC AND CCEC

Test:U:230.59V I:0.0878A P:19.829W PF:0.9788 Freq:49.99Hz Lamp Flux:1630.62x1 lm		
NAME: Stanley 35 2x9W LED wall light	TYPE:	WEIGHT:
SPEC.:	DIM.:	SERIAL No.:
MFR.: CG LIGHTING	SUR.:	Shielding Angle:

rcc	80%			70%			50%			30%			10%			0
rw	50%	30%	10%	50%	30%	10%	50%	30%	10%	50%	30%	10%	50%	30%	10%	0
rfc	20%			20%			20%			20%			20%			0
RCR	RCR:Room Cavity Ratio						Wall Exitance Coefficients(WEC)									
0.0																
1.0	.434	.247	.078	.414	.236	.075	.376	.216	.069	.341	.197	.063	.309	.179	.058	
2.0	.373	.204	.063	.355	.195	.060	.320	.178	.055	.288	.162	.051	.259	.146	.046	
3.0	.327	.174	.052	.310	.166	.050	.279	.151	.046	.249	.137	.042	.222	.123	.038	
4.0	.290	.151	.044	.275	.144	.043	.246	.130	.039	.219	.118	.035	.194	.105	.032	
5.0	.260	.133	.038	.246	.126	.037	.220	.114	.034	.195	.103	.031	.172	.092	.028	
6.0	.236	.118	.034	.223	.113	.032	.198	.102	.030	.176	.091	.027	.154	.081	.024	
7.0	.215	.106	.030	.203	.101	.029	.181	.091	.026	.160	.082	.024	.140	.073	.021	
8.0	.198	.097	.027	.187	.092	.026	.166	.083	.024	.146	.074	.021	.128	.066	.019	
9.0	.183	.089	.025	.173	.084	.024	.153	.076	.021	.135	.068	.019	.118	.060	.017	
10.0	.170	.082	.023	.161	.078	.022	.143	.070	.020	.125	.062	.018	.109	.055	.016	

rcc	80%			70%			50%			30%			10%			0
rw	50%	30%	10%	50%	30%	10%	50%	30%	10%	50%	30%	10%	50%	30%	10%	0
rfc	20%			20%			20%			20%			20%			0
RCR	RCR:Room Cavity Ratio						Ceiling Cavity Exitance Coefficients(CCEC)									
0.0	.511	.511	.511	.437	.437	.437	.298	.298	.298	.171	.171	.171	.055	.055	.055	
1.0	.512	.478	.448	.438	.411	.385	.300	.282	.267	.173	.163	.155	.055	.053	.050	
2.0	.509	.457	.414	.436	.393	.358	.299	.272	.249	.172	.158	.146	.055	.051	.048	
3.0	.503	.442	.393	.431	.381	.341	.296	.265	.239	.171	.155	.141	.055	.050	.046	
4.0	.496	.431	.381	.425	.372	.331	.293	.259	.233	.169	.152	.138	.054	.049	.045	
5.0	.488	.422	.373	.419	.365	.324	.289	.255	.229	.167	.150	.136	.054	.049	.045	
6.0	.481	.414	.367	.413	.359	.319	.285	.251	.226	.165	.148	.134	.053	.048	.044	
7.0	.473	.408	.363	.407	.354	.316	.281	.248	.224	.163	.146	.133	.053	.048	.044	
8.0	.466	.403	.359	.401	.350	.313	.278	.245	.222	.162	.145	.132	.052	.047	.044	
9.0	.460	.398	.357	.396	.346	.311	.274	.243	.221	.160	.144	.132	.052	.047	.044	
10.0	.454	.394	.355	.391	.343	.310	.271	.241	.220	.158	.142	.131	.051	.047	.044	

C Range: 0 - 360DEG
 C Interval: 10.0DEG
 Test Speed: HIGH
 Temperature:25.3DEG
 Operators:LQL
 Test Date:04 April 2023

g Range: 0 - 180DEG
 g Interval: 2.0DEG
 Test System:EVERFINE GO-2000B_V1 SYSTEM V2.0.403
 Humidity:65.0%
 Test Distance:10.365m [K=1.0000]
 Remarks: ZG1BGX30KH0 D50025NTF

UGR(Unified Glare Rating) Table

Test:U:230.59V I:0.0878A P:19.829W PF:0.9788 Freq:49.99Hz Lamp Flux:1630.62x1 lm										
NAME: Stanley 35 2x9W LED wall light					TYPE:			WEIGHT:		
SPEC.:					DIM.:			SERIAL No.:		
MFR.: CG LIGHTING					SUR.:			Shielding Angle:		
ceiling/cavity	0.7	0.7	0.5	0.5	0.3	0.7	0.7	0.5	0.5	0.3
walls	0.5	0.3	0.5	0.3	0.3	0.5	0.3	0.5	0.3	0.3
working plane	0.2	0.2	0.2	0.2	0.2	0.2	0.2	0.2	0.2	0.2
Room dimensions	Viewed crosswise					Viewed endwise				
x = 2H y = 2H	14.5	15.7	15.3	16.6	17.6	19.3	20.5	20.1	21.4	22.4
3H	16.7	17.8	17.5	18.7	19.8	22.2	23.3	23.0	24.2	25.3
4H	17.1	18.2	17.9	19.1	20.2	23.2	24.3	24.1	25.2	26.3
6H	17.3	18.3	18.2	19.2	20.3	23.9	24.9	24.7	25.8	26.9
8H	17.5	18.5	18.3	19.3	20.5	24.0	25.0	24.8	25.8	27.0
12H	17.7	18.6	18.5	19.5	20.6	24.0	24.9	24.8	25.8	27.0
4H 2H	17.2	18.3	18.0	19.1	20.2	19.9	21.0	20.7	21.8	22.9
3H	19.8	20.8	20.7	21.7	22.8	23.0	23.9	23.8	24.8	25.9
4H	21.0	21.9	21.9	22.8	23.9	24.1	25.0	25.0	25.9	27.1
6H	21.9	22.7	22.8	23.6	24.8	24.9	25.7	25.8	26.6	27.8
8H	22.2	22.9	23.1	23.8	25.0	25.1	25.8	26.0	26.7	27.9
12H	22.5	23.2	23.4	24.1	25.3	25.1	25.8	26.0	26.7	27.9
8H 4H	22.1	22.8	23.0	23.7	24.9	24.4	25.2	25.4	26.1	27.3
6H	23.6	24.2	24.5	25.1	26.4	25.4	26.0	26.3	27.0	28.2
8H	24.4	24.9	25.3	25.9	27.1	25.7	26.2	26.6	27.2	28.4
12H	25.3	25.7	26.2	26.7	28.0	25.8	26.3	26.8	27.3	28.5
12H 4H	22.2	22.8	23.1	23.8	25.0	24.5	25.2	25.4	26.1	27.3
6H	23.8	24.4	24.8	25.3	26.6	25.5	26.1	26.5	27.1	28.3
8H	24.8	25.3	25.8	26.3	27.5	25.9	26.4	26.9	27.4	28.6
Variations with the observer position at spacings:										
S = 1.0H	+ 0.1 / - 0.2					+ 0.1 / - 0.1				
1.5H	+ 0.2 / - 0.2					+ 0.1 / - 0.2				
2.0H	+ 0.6 / - 0.4					+ 0.4 / - 0.6				

CIE Pub.117, 1631 lm Total Lamp Luminous Flux Correct (8log(F/F0) = 1.7)

C Range: 0 - 360DEG
 C Interval: 10.0DEG
 Test Speed: HIGH
 Temperature:25.3DEG
 Operators:LQL
 Test Date:04 April 2023

g Range: 0 - 180DEG
 g Interval: 2.0DEG
 Test System:EVERFINE GO-2000B_V1 SYSTEM V2.0.403
 Humidity:65.0%
 Test Distance:10.365m [K=1.0000]
 Remarks: ZG1BGX30KH0 D50025NTF

UTILIZATION FACTORS TABLE

Test:U:230.59V I:0.0878A P:19.829W PF:0.9788 Freq:49.99Hz Lamp Flux:1630.62x1 lm		
NAME: Stanley 35 2x9W LED wall light	TYPE:	WEIGHT:
SPEC.:	DIM.:	SERIAL No.:
MFR.: CG LIGHTING	SUR.:	Shielding Angle:

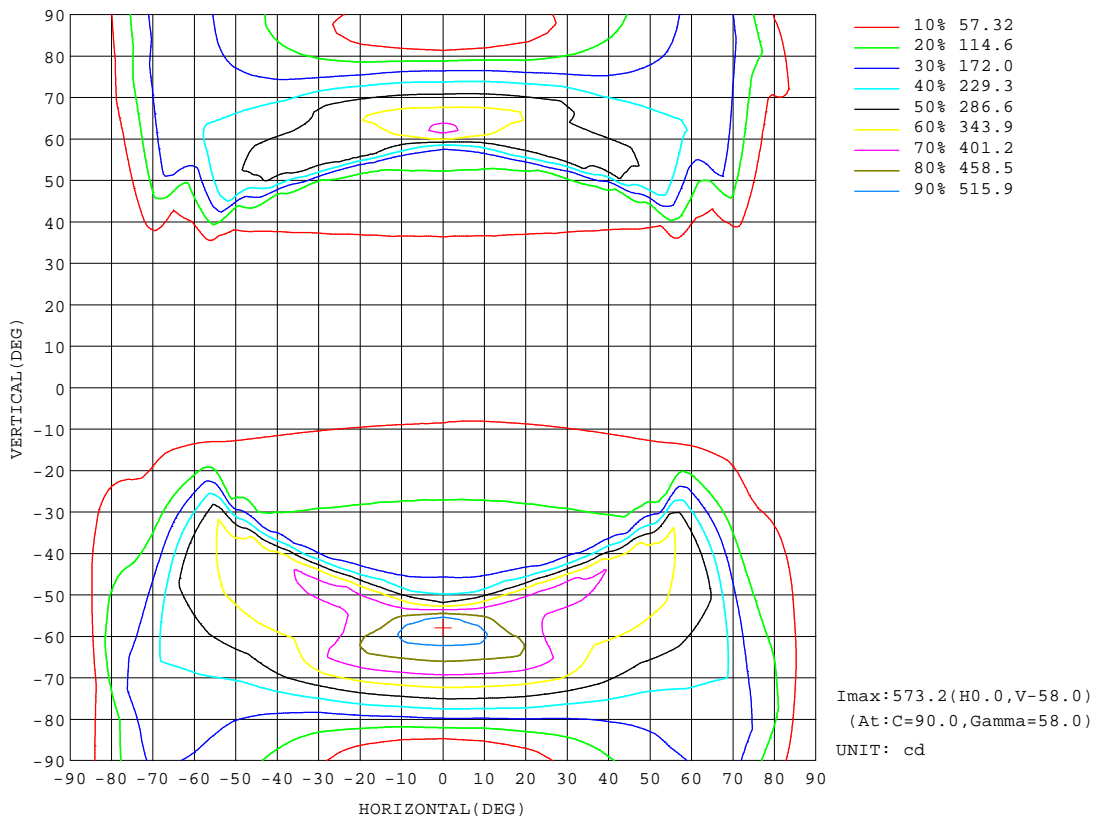
REFLECTANCE										
Ceiling	0.8	0.8	0.8	0.7	0.7	0.7	0.5	0.5	0.5	0
Walls	0.7	0.5	0.3	0.7	0.5	0.3	0.7	0.5	0.3	0
Working plane	0.2	0.2	0.2	0.2	0.2	0.2	0.2	0.2	0.2	0
ROOM INDEX	UTILIZATION FACTORS(PERCENT) $k(RI) \times RCR = 5$									
k = 0.60	34	20	13	32	20	12	29	18	11	4
0.80	42	27	18	40	26	17	35	23	16	6
1.00	49	34	24	46	32	23	40	31	21	9
1.25	56	41	31	53	39	29	46	34	26	13
1.50	62	47	37	58	44	35	50	39	31	16
2.00	71	57	47	66	54	44	57	47	39	22
2.50	77	64	54	71	60	51	61	52	45	26
3.00	81	70	61	75	65	57	65	57	50	30
4.00	87	78	70	81	73	66	70	63	57	35
5.00	91	83	76	85	78	71	73	67	62	39
ROOM INDEX	UF(total)									Direct
According to DIN EN 13032-2 2004			Suspended				SHRNOM = 1.25			

C Range: 0 - 360DEG
 C Interval: 10.0DEG
 Test Speed: HIGH
 Temperature:25.3DEG
 Operators:LQL
 Test Date:04 April 2023

g Range: 0 - 180DEG
 Interval: 2.0DEG
 Test System:EVERFINE GO-2000B_V1 SYSTEM V2.0.403
 Humidity:65.0%
 Test Distance:10.365m [K=1.0000]
 Remarks: ZG1BGX30KH0 D50025NTF

ISOCANDELA DIAGRAM

Test:U:230.59V I:0.0878A P:19.829W PF:0.9788 Freq:49.99Hz Lamp Flux:1630.62x1 lm		
NAME: Stanley 35 2x9W LED wall light	TYPE:	WEIGHT:
SPEC.:	DIM.:	SERIAL No.:
MFR.: CG LIGHTING	SUR.:	Shielding Angle:

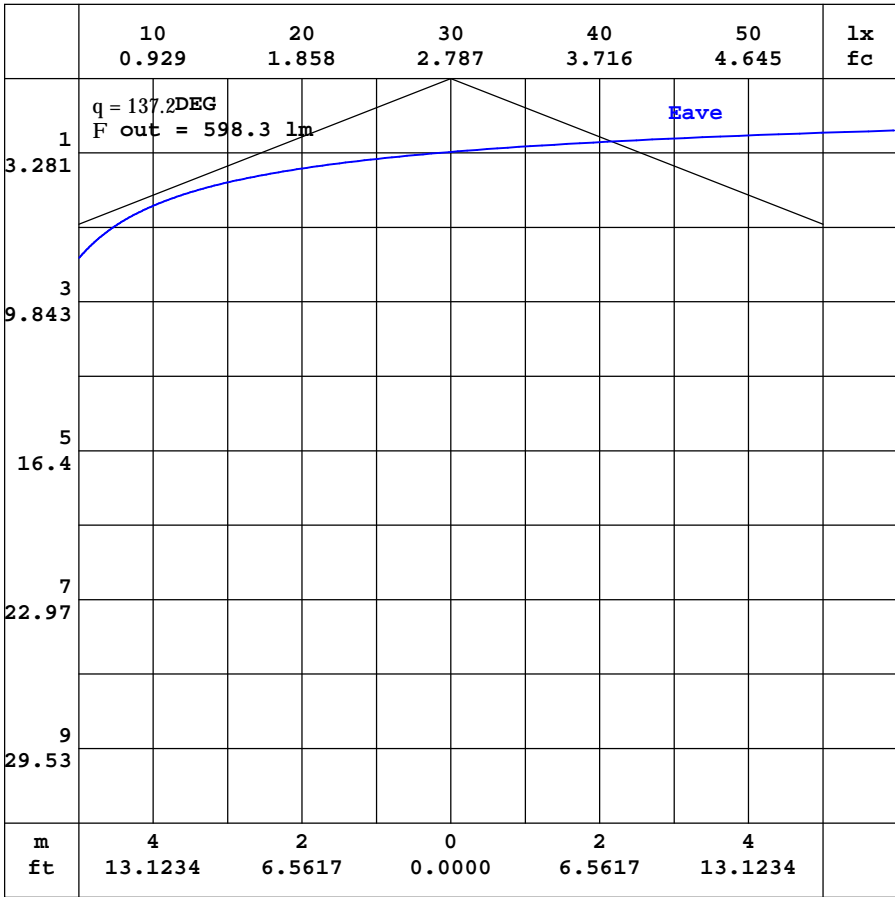


C Range: 0 - 360DEG
 C Interval: 10.0DEG
 Test Speed: HIGH
 Temperature: 25.3DEG
 Operators: LQL
 Test Date: 04 April 2023

Range: 0 - 180DEG
 Interval: 2.0DEG
 Test System: EVERFINE GO-2000B_V1 SYSTEM V2.0.403
 Humidity: 65.0%
 Test Distance: 10.365m [K=1.0000]
 Remarks: ZG1BGX30KH0 D50025NTF

AAI CURVES

Test:U:230.59V I:0.0878A P:19.829W PF:0.9788 Freq:49.99Hz Lamp Flux:1630.62x1 lm		
NAME: Stanley 35 2x9W LED wall light	TYPE:	WEIGHT:
SPEC.:	DIM.:	SERIAL No.:
MFR.: CG LIGHTING	SUR.:	Shielding Angle:



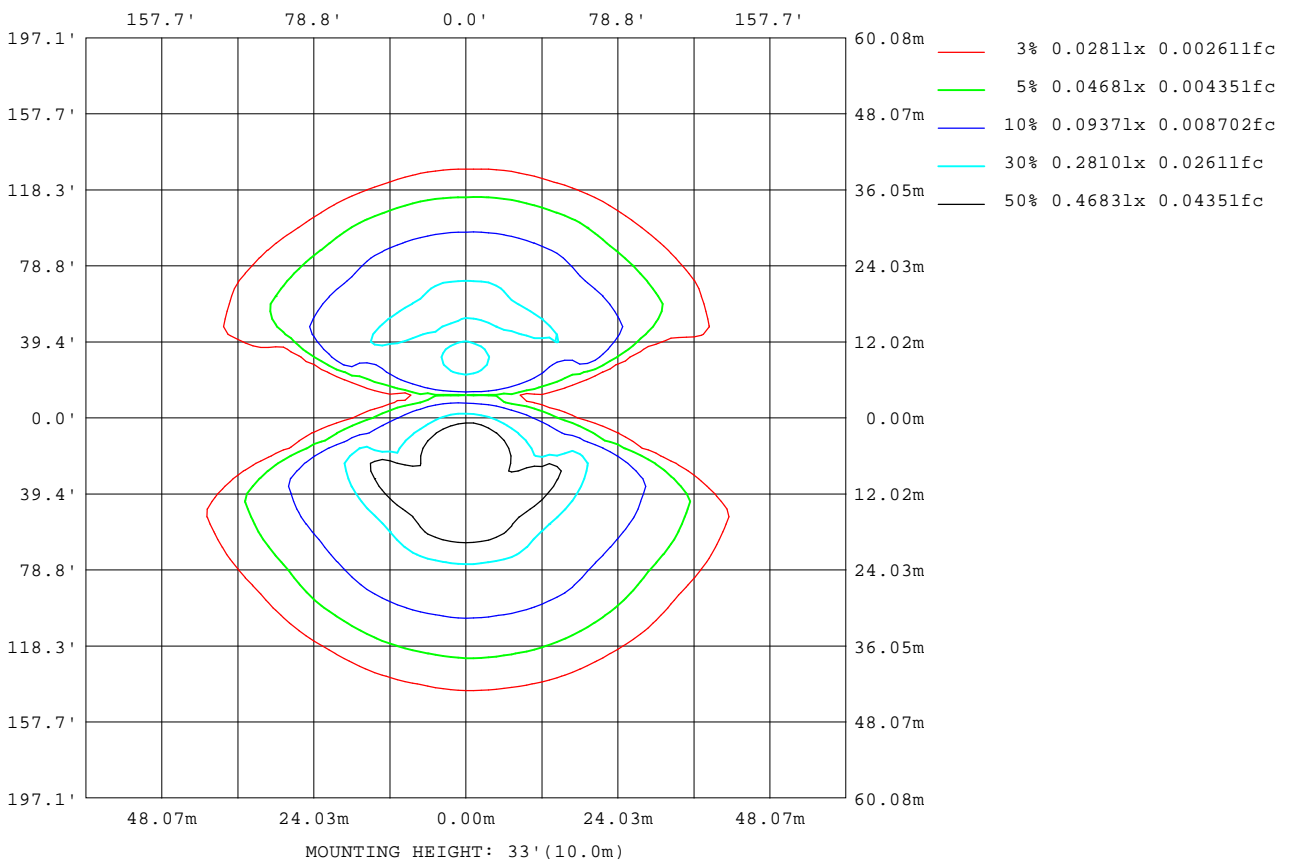
Note:The Curves indicate the illuminated area and the average illumination when the luminaire is at different distance.

C Range: 0 - 360DEG
 C Interval: 10.0DEG
 Test Speed: HIGH
 Temperature:25.3DEG
 Operators:LQL
 Test Date:04 April 2023

Range: 0 - 180DEG
 Interval: 2.0DEG
 Test System:EVERFINE GO-2000B_V1 SYSTEM V2.0.403
 Humidity:65.0%
 Test Distance:10.365m [K=1.0000]
 Remarks: ZG1BGX30KH0 D50025NTF

ISOLUX DIAGRAM

Test:U:230.59V I:0.0878A P:19.829W PF:0.9788 Freq:49.99Hz Lamp Flux:1630.62x1 lm		
NAME: Stanley 35 2x9W LED wall light	TYPE:	WEIGHT:
SPEC.:	DIM.:	SERIAL No.:
MFR.: CG LIGHTING	SUR.:	Shielding Angle:



C Range: 0 - 360DEG
 C Interval: 10.0DEG
 Test Speed: HIGH
 Temperature:25.3DEG
 Operators:LQL
 Test Date:04 April 2023

Range: 0 - 180DEG
 Interval: 2.0DEG
 Test System:EVERFINE GO-2000B_V1 SYSTEM V2.0.403
 Humidity:65.0%
 Test Distance:10.365m [K=1.0000]
 Remarks: ZG1BGX30KH0 D50025NTF

LED Avg.L Report

Test:U:230.59V I:0.0878A P:19.829W PF:0.9788 Freq:49.99Hz Lamp Flux:1630.62x1 lm		
NAME: Stanley 35 2x9W LED wall light	TYPE:	WEIGHT:
SPEC.:	DIM.:	SERIAL No.:
MFR.: CG LIGHTING	SUR.:	Shielding Angle:

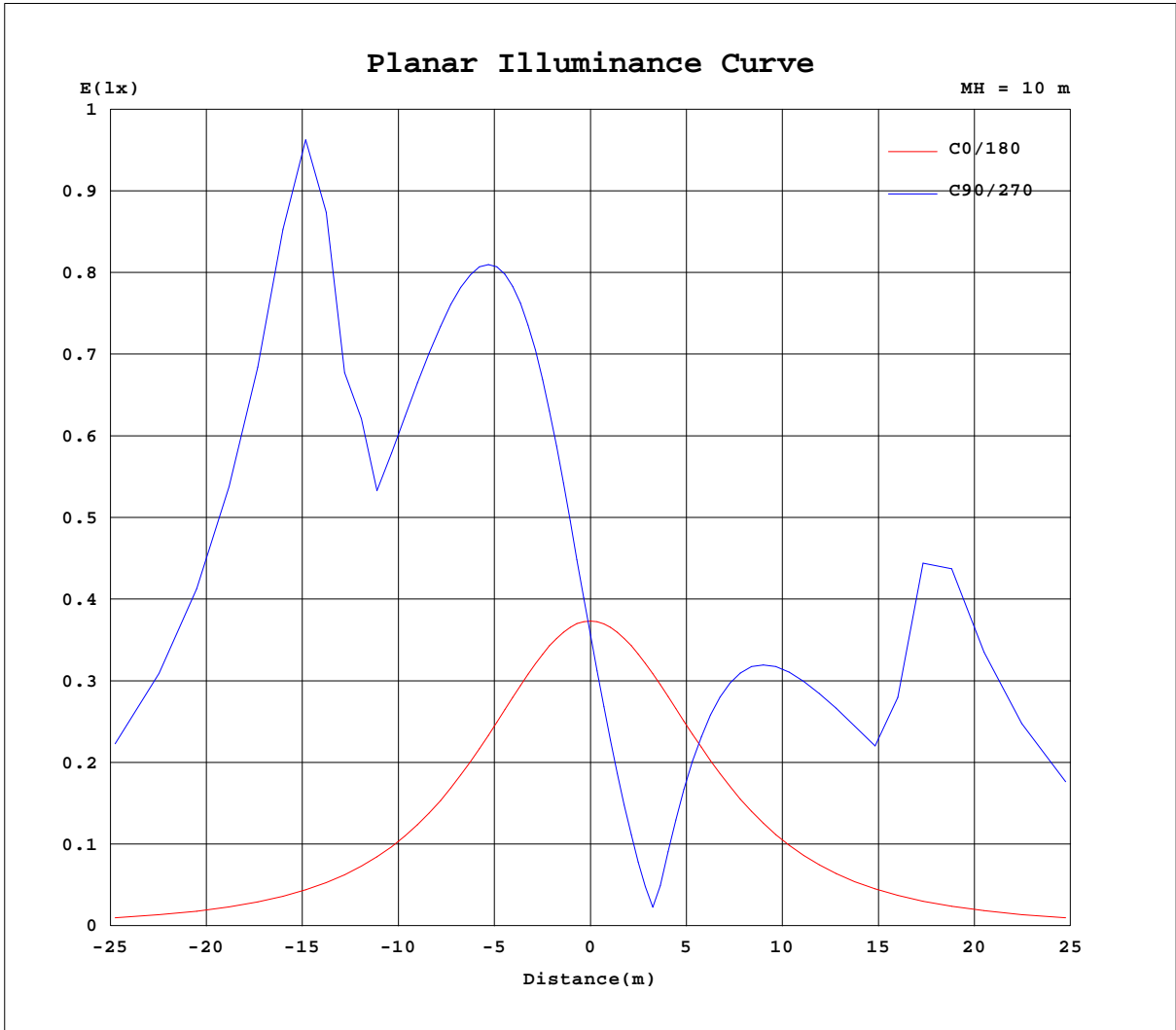
AvgL	cd/m2
L_0~180(65)av	505
L_0~180(75)av	505
L_0~180(85)av	705
L_90~270(65)av	10168
L_90~270(75)av	9502
L_90~270(85)av	3869
L_45(65)av	7837
L_45(75)av	9653
L_45(85)av	16664

Standard: GB/T 29293-2012

C Range: 0 - 360DEG
 C Interval: 10.0DEG
 Test Speed: HIGH
 Temperature:25.3DEG
 Operators:LQL
 Test Date:04 April 2023

g Range: 0 - 180DEG
 g Interval: 2.0DEG
 Test System:EVERFINE GO-2000B_V1 SYSTEM V2.0.403
 Humidity:65.0%
 Test Distance:10.365m [K=1.0000]
 Remarks: ZG1BGX30KH0 D50025NTF

Planar Illuminance Curve



C Range: 0 - 360DEG
C Interval: 10.0DEG
Test Speed: HIGH
Temperature: 25.3DEG
Operators: LQL
Test Date: 04 April 2023

Page Range: 0 - 180DEG
Interval: 2.0DEG
Test System: EVERFINE GO-2000B_V1 SYSTEM V2.0.403
Humidity: 65.0%
Test Distance: 10.365m [K=1.0000]
Remarks: ZG1BGX30KH0 D50025NTF

LUMINOUS DISTRIBUTION INTENSITY DATA

Test:U:230.59V I:0.0878A P:19.829W PF:0.9788 Freq:49.99Hz Lamp Flux:1630.62x1 lm		
NAME: Stanley 35 2x9W LED wall light	TYPE:	WEIGHT:
SPEC.:	DIM.:	SERIAL No.:
MFR.: CG LIGHTING	SUR.:	Shielding Angle:

Table--1

UNIT: cd

C(DEG) g (DEG)	0	10	20	30	40	50	60	70	80	90	100	110	120	130	140	150	160	170	180
0	37.3	37.3	37.4	37.2	37.2	36.9	36.9	36.4	36.2	35.6	35.5	35.2	35.3	35.0	35.0	34.9	34.9	34.9	37.3
5	37.3	38.9	40.5	41.8	43.2	44.2	45.1	45.4	45.7	45.2	45.0	44.2	43.5	42.2	41.0	39.5	38.0	36.4	37.3
10	36.9	40.9	45.1	49.1	53.0	56.1	59.0	60.6	61.7	61.5	61.0	59.3	57.3	54.2	50.8	46.7	42.7	38.5	36.9
15	36.4	42.2	48.3	54.2	59.9	64.7	68.9	71.5	73.3	73.3	72.7	70.4	67.3	62.8	57.8	51.9	45.9	39.8	36.5
20	35.5	44.0	53.1	62.1	70.8	78.2	84.5	88.8	91.5	91.9	91.0	87.8	83.1	76.5	68.8	60.0	50.8	41.7	35.6
25	34.8	45.1	56.4	67.6	78.4	87.5	95.4	101	104	105	104	99.7	94.2	86.0	76.6	65.7	54.3	42.9	34.9
30	33.4	46.8	61.6	76.3	90.3	102	112	119	123	124	123	118	111	101	88.9	74.8	59.8	44.8	33.7
35	32.5	47.9	65.4	82.6	98.7	112	123	131	136	137	136	131	123	111	97.7	81.4	63.9	46.1	32.7
40	30.8	49.7	71.9	93.0	112	128	141	149	155	156	155	149	141	128	112	92.7	71.1	48.3	31.2
45	29.6	51.3	77.1	101	122	138	152	160	166	168	166	160	152	139	123	101	77.1	50.2	30.1
50	27.6	54.6	87.0	114	138	214	276	270	237	234	245	289	307	259	167	116	88.5	54.2	28.2
55	26.2	57.9	95.0	152	348	414	420	419	413	430	405	414	414	411	396	231	97.6	58.3	26.8
60	23.7	64.7	288	375	391	395	392	437	541	547	541	447	385	388	384	370	342	66.0	24.4
65	21.6	69.3	337	364	373	373	380	480	489	490	485	482	388	364	365	357	331	71.2	22.3
70	17.5	76.8	315	336	332	326	390	393	389	389	385	384	378	322	317	323	306	77.2	17.4
75	13.9	75.5	290	302	291	304	318	318	313	311	303	301	296	291	273	283	277	79.3	13.8
80	9.52	87.6	248	239	220	206	192	184	170	167	161	166	170	186	202	223	237	119	9.83
85	6.87	112	223	207	182	158	128	104	78.1	69.3	72.6	93.7	115	144	169	197	217	153	6.97
90	2.58	78.3	195	175	145	110	69.7	35.0	15.5	11.0	14.5	32.3	63.4	102	137	166	185	94.0	2.64
95	4.10	87.1	147	154	127	94.5	66.6	42.9	23.3	13.5	23.4	44.2	69.6	94.1	118	135	158	102	4.28
100	8.27	68.1	158	159	141	122	102	82.9	74.7	71.2	78.2	88.9	108	130	152	169	152	55.9	8.29
105	10.8	29.1	127	171	165	149	136	125	120	118	124	132	145	159	171	170	116	25.7	10.7
110	14.2	12.7	81.3	140	174	183	183	180	180	180	183	186	189	186	173	134	74.8	12.1	13.9
115	16.4	5.03	52.5	114	157	183	195	200	202	203	204	202	196	182	154	109	47.5	5.32	16.0
120	19.4	2.42	28.8	80.7	123	158	180	194	201	204	201	193	178	155	120	76.5	28.5	2.14	19.2
125	21.3	3.88	19.8	56.2	102	135	160	176	184	187	183	175	158	133	99.2	54.3	19.9	3.37	21.2
130	23.8	5.79	7.89	34.8	66.8	103	126	145	154	158	154	145	126	101	65.6	35.3	8.51	5.17	24.0
135	25.5	7.51	1.75	24.3	49.0	78.1	103	121	132	136	132	121	102	76.8	49.5	25.3	1.88	6.41	25.8
140	27.9	12.5	2.44	10.4	29.7	49.2	66.2	81.2	89.7	93.6	89.5	81.0	66.6	50.0	30.8	11.5	2.11	10.6	28.2
145	29.4	16.0	3.91	2.01	18.5	34.9	48.7	60.5	67.0	70.1	67.1	60.8	49.4	35.9	19.6	3.16	3.42	13.5	29.6
150	31.3	19.9	6.73	2.27	2.96	15.5	25.8	34.6	39.4	41.8	39.7	35.1	26.6	16.5	4.04	1.97	5.65	16.9	31.5
155	32.0	21.0	9.70	3.73	1.48	3.67	11.9	19.0	23.0	24.8	23.3	19.6	12.7	4.60	1.45	3.40	8.30	18.1	32.2
160	27.6	20.1	13.5	7.18	3.68	2.37	1.26	1.22	1.41	2.35	1.60	1.28	1.34	2.11	3.58	6.34	11.3	17.7	28.3
165	23.9	18.9	14.5	10.2	6.48	4.35	3.83	3.14	2.51	2.19	1.86	2.28	2.96	3.98	5.92	9.07	12.9	17.7	24.4
170	19.6	16.4	13.4	10.7	8.61	7.52	6.93	4.96	4.41	4.90	5.39	6.00	6.82	8.17	10.0	12.1	14.5	17.5	20.0
175	16.5	14.6	12.6	10.6	8.85	7.02	4.90	5.51	6.42	7.20	7.77	8.59	9.43	10.5	11.8	13.5	15.4	17.8	16.7
180	21.2	20.9	19.9	18.0	15.6	14.9	15.1	15.5	15.6	16.2	24.3	29.1	29.2	29.3	29.1	29.1	28.9	29.0	21.1

C Range: 0 - 360DEG
 C Interval: 10.0DEG
 Test Speed: HIGH
 Temperature:25.3DEG
 Operators:LQL
 Test Date:04 April 2023

g Range: 0 - 180DEG
 Interval: 2.0DEG
 Test System:EVERFINE GO-2000B_V1 SYSTEM V2.0.403
 Humidity:65.0%
 Test Distance:10.365m [K=1.0000]
 Remarks: ZG1BGX30KH0 D50025NTF

LUMINOUS DISTRIBUTION INTENSITY DATA

Test:U:230.59V I:0.0878A P:19.829W PF:0.9788 Freq:49.99Hz Lamp Flux:1630.62x1 lm		
NAME: Stanley 35 2x9W LED wall light	TYPE:	WEIGHT:
SPEC.:	DIM.:	SERIAL No.:
MFR.: CG LIGHTING	SUR.:	Shielding Angle:

Table--2

UNIT: cd

C(DEG) g (DEG)	190	200	210	220	230	240	250	260	270	280	290	300	310	320	330	340	350		
0	37.3	37.4	37.2	37.2	36.9	36.9	36.4	36.2	35.6	35.5	35.2	35.3	35.0	35.0	34.9	34.9	34.9		
5	35.7	34.2	32.7	31.5	30.1	29.3	28.3	27.7	27.1	27.0	27.1	27.8	28.3	29.4	30.4	31.8	33.2		
10	33.0	29.4	26.0	23.2	20.7	18.9	17.1	16.3	15.5	15.7	16.1	17.4	19.0	21.3	24.0	27.2	30.6		
15	31.0	26.2	21.7	18.0	14.8	12.5	10.5	9.39	8.58	8.86	9.50	11.2	13.3	16.3	19.8	24.0	28.7		
20	27.9	21.3	15.4	10.7	6.78	4.04	3.23	4.95	5.95	4.98	3.28	2.96	5.51	9.18	13.7	19.3	25.7		
25	25.8	18.0	11.4	6.18	3.01	8.40	13.3	15.9	17.0	15.9	13.4	8.81	3.44	4.81	9.88	16.2	23.6		
30	22.3	13.2	5.76	6.15	15.9	24.0	30.5	34.1	35.7	34.1	30.6	24.2	16.5	7.02	4.39	11.6	20.3		
35	20.0	10.1	2.73	14.1	25.9	35.5	43.2	47.3	49.2	47.2	43.1	35.6	26.4	14.8	3.16	8.61	18.1		
40	16.4	5.63	11.9	27.7	42.9	54.6	63.9	68.6	70.7	68.3	63.4	54.3	42.8	28.1	12.8	4.32	14.7		
45	13.9	2.88	19.8	38.5	55.6	68.4	78.3	83.2	85.3	82.8	77.5	67.6	55.1	38.3	20.4	2.42	12.3		
50	10.1	9.29	34.5	57.6	76.8	90.3	100	105	107	105	99.0	88.7	75.1	56.3	34.3	10.2	8.77		
55	7.50	16.5	46.7	72.3	92.0	105	114	119	121	118	113	103	89.6	70.0	45.6	17.2	6.38		
60	3.83	31.3	69.2	225	316	319	314	317	355	310	306	312	298	117	66.3	30.9	2.98		
65	3.31	43.4	249	301	307	303	324	397	398	400	321	298	302	297	205	42.2	4.35		
70	11.9	64.8	267	277	267	297	302	303	301	307	311	300	268	278	268	63.0	13.8		
75	19.5	151	242	237	227	230	224	225	223	231	236	247	237	245	248	117	21.1		
80	30.3	195	207	180	149	123	101	89.0	84.5	95.4	107	131	156	185	209	197	32.1		
85	38.7	187	200	158	119	84.2	48.9	29.6	23.3	30.2	53.1	88.9	123	160	193	184	38.2		
90	56.2	185	194	144	102	72.2	47.6	24.6	14.6	21.9	42.7	65.4	97.3	136	186	173	53.8		
95	67.8	188	189	161	125	96.1	73.3	56.4	51.0	51.7	65.9	86.7	112	144	175	171	69.4		
100	62.3	180	212	202	180	151	137	126	123	121	127	137	163	188	202	186	80.3		
105	53.8	154	208	219	213	195	181	172	170	167	172	181	199	209	207	165	60.0		
110	48.8	122	176	218	236	239	234	227	225	223	228	232	231	218	186	132	51.3		
115	48.1	104	154	196	232	247	252	249	247	247	248	244	232	207	167	115	49.3		
120	49.0	95.2	134	167	203	232	251	258	260	257	250	237	215	183	144	98.3	48.6		
125	49.0	89.6	119	160	189	214	241	251	254	251	241	224	199	167	127	91.8	48.7		
130	48.5	87.5	109	138	169	192	204	228	232	228	216	198	174	143	109	85.6	47.4		
135	48.1	83.6	106	126	151	174	187	205	209	206	194	179	155	128	105	83.1	46.7		
140	47.1	74.5	97.6	114	130	146	157	162	172	170	161	148	131	115	97.5	73.7	45.3		
145	46.3	68.0	89.3	105	119	132	142	146	154	152	144	134	119	105	89.7	67.0	44.3		
150	45.0	60.7	76.8	90.7	103	113	121	125	130	128	123	114	103	90.7	76.5	59.5	42.9		
155	43.9	57.0	69.9	82.1	92.4	101	108	111	108	114	109	102	92.4	81.7	69.1	55.6	41.8		
160	37.4	48.5	60.0	70.0	77.6	84.2	88.6	90.9	88.2	92.9	89.4	84.3	77.3	69.2	60.0	50.1	40.2		
165	30.6	38.4	48.1	59.3	68.1	73.2	76.5	78.3	76.3	79.5	77.1	73.2	67.9	61.6	54.3	46.6	38.9		
170	23.5	27.5	31.8	37.0	43.9	53.9	59.6	60.5	59.5	58.4	59.8	57.5	54.2	50.4	46.0	41.5	36.8		
175	19.1	21.6	24.3	27.1	30.4	34.4	41.9	49.4	48.9	44.3	48.7	47.5	45.6	43.3	40.8	38.1	33.6		
180	20.8	19.9	17.9	15.6	15.1	15.4	15.8	16.0	16.8	25.6	29.8	29.9	29.8	29.5	29.4	29.2	29.1		

C Range: 0 - 360DEG
 C Interval: 10.0DEG
 Test Speed: HIGH
 Temperature:25.3DEG
 Operators:LQL
 Test Date:04 April 2023

g Range: 0 - 180DEG
 Interval: 2.0DEG
 Test System:EVERFINE GO-2000B_V1 SYSTEM V2.0.403
 Humidity:65.0%
 Test Distance:10.365m [K=1.0000]
 Remarks: ZG1BGX30KH0 D50025NTF