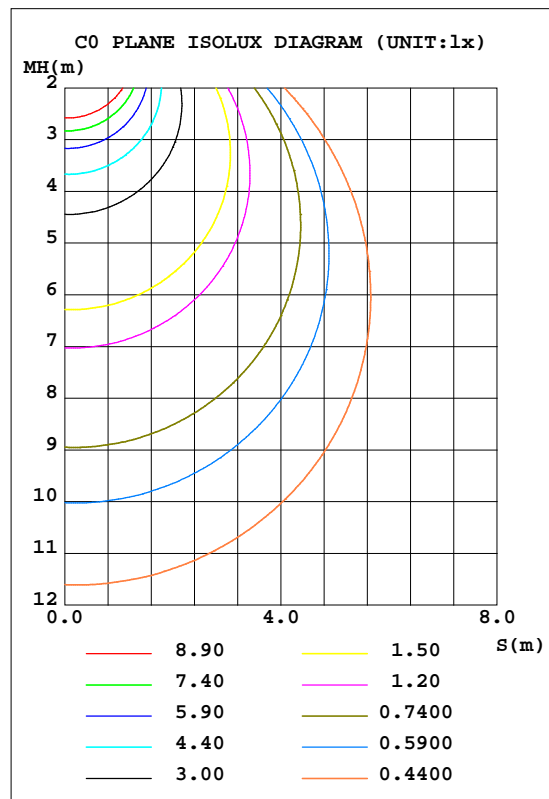
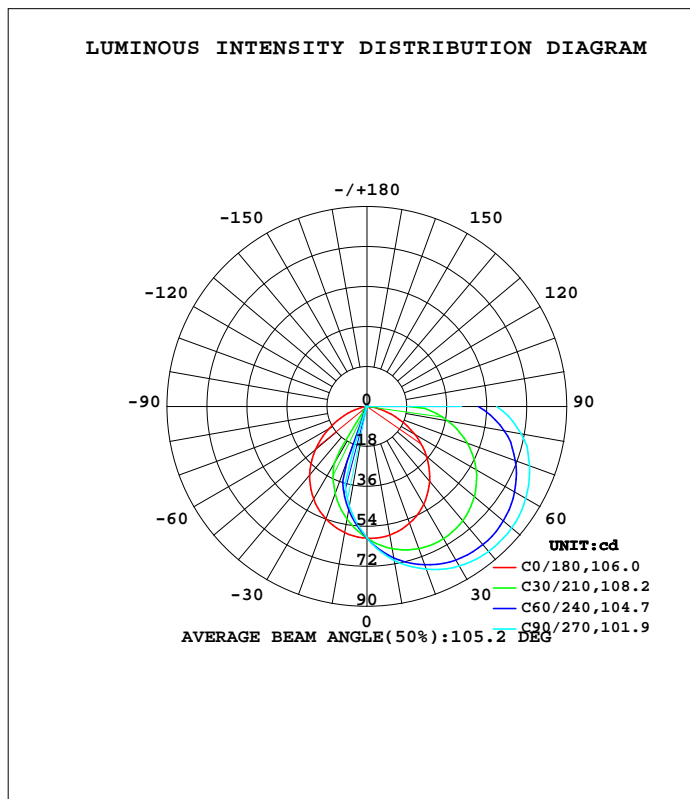


LUMINAIRE PHOTOMETRIC TEST REPORT

Test:U:230.75V I:0.0219A P:2.6230W PF:0.5180 Freq:49.99Hz Lamp Flux:206.022x1 lm		
NAME: Mini wall light 2W 3.5W+Type C	TYPE:	WEIGHT:
SPEC.:	DIM.:	SERIAL No.:
MFR.: CG LIGHTING	SUR.:	Shielding Angle:

DATA OF LAMP		PHOTOMETRIC DATA				Eff: 78.54 lm/W
MODEL	2034B	I <sub>max</sub> (cd)	85.36	S/MH(C0/180)	1.21	
NOMINAL POWER(W)		LOR(%)	100.0	S/MH(C90/270)	0.46	
RATED VOLTAGE(V)	230	TOTAL FLUX(lm)	206.02	h UP, DN(C0-180)	0.0,88.9	
NOMINAL FLUX(lm)	206.022	CIE CLASS	DIRECT	h UP, DN(C180-360)	0.0,11.1	
LAMPS INSIDE	1	h up(%)	0.0	CIBSE SHR NOM	1.00	
TEST VOLTAGE(V)	230	h down(%)	100.0	CIBSE SHR MAX	1.10	



C Range: 0 - 360DEG  
 C Interval: 10.0DEG  
 Test Speed: HIGH  
 Temperature:25.3DEG  
 Operators:LQL  
 Test Date:31 May 2023

Range: 0 - 90DEG  
 Interval: 2.0DEG  
 Test System:EVERFINE GO-2000B\_V1 SYSTEM V2.0.403  
 Humidity:65.0%  
 Test Distance:10.365m [K=1.0000]  
 Remarks: SMD2W LED ZG1BGC30F00 ACTEC CV1218

ZONAL FLUX DIAGRAM

ZONAL FLUX DIAGRAM:

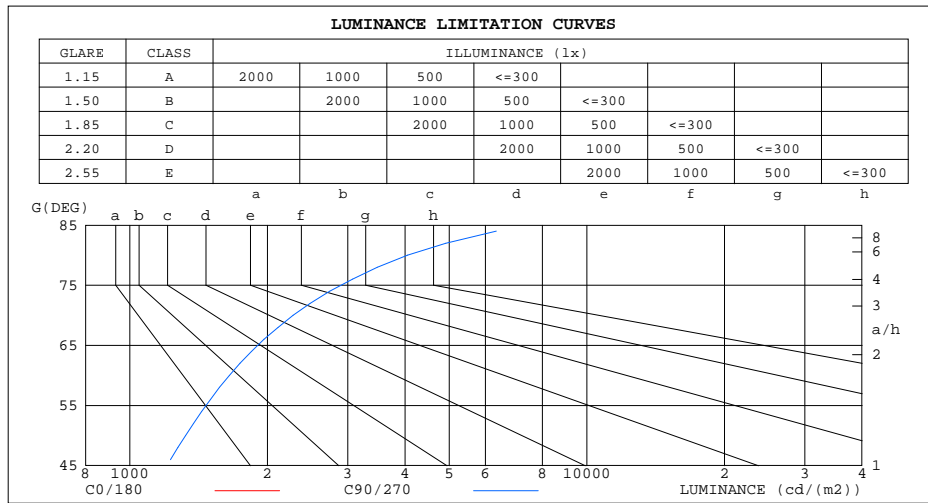
g	C0	C45	C90	C135	C180	C225	C270	C315	g	F zone	F total	%lum,lamp
10	58.78	67.30	70.24	66.25	57.69	49.20	45.66	49.64	0- 10	5.598	5.598	2.72,2.72
20	55.95	72.53	77.90	70.72	53.93	36.66	4.326	37.60	10- 20	15.74	21.33	10.4,10.4
30	51.00	75.15	82.96	72.58	48.09	3.582	0.1845	3.358	20- 30	21.50	42.84	20.8,20.8
40	43.95	75.26	85.24	71.98	40.13	0.1550	0.0886	0.1732	30- 40	25.99	68.83	33.4,33.4
50	35.06	72.89	85.06	69.16	30.39	0.1253	0.1180	0.1291	40- 50	29.17	98.01	47.6,47.6
60	24.70	68.21	82.63	64.12	19.59	0.1807	0.2433	0.2028	50- 60	30.51	128.5	62.4,62.4
70	13.69	61.20	77.88	56.85	9.202	0.3395	0.4571	0.3688	60- 70	29.51	158.0	76.7,76.7
80	4.103	51.69	70.38	47.35	1.980	0.4942	0.6048	0.4832	70- 80	26.54	184.6	89.6,89.6
90	0.1623	34.12	58.34	34.14	0.1992	0.6934	0.8335	0.6897	80- 90	21.46	206.0	100,100
100									90-100			
110									100-110			
120									110-120			
130									120-130			
140									130-140			
150									140-150			
160									150-160			
170									160-170			
180									170-180			
DEG	LUMINOUS INTENSITY:cd									UNIT:lm		

C Range: 0 - 360DEG  
 C Interval: 10.0DEG  
 Test Speed: HIGH  
 Temperature:25.3DEG  
 Operators:LQL  
 Test Date:31 May 2023

g Range: 0 - 90DEG  
 Interval: 2.0DEG  
 Test System:EVERFINE GO-2000B\_V1 SYSTEM V2.0.403  
 Humidity:65.0%  
 Test Distance:10.365m [K=1.0000]  
 Remarks: SMD2W LED ZG1BGC30F00 ACTEC CV1218

LUMINANCE LIMITATION CURVES

Test:U:230.75V I:0.0219A P:2.6230W PF:0.5180 Freq:49.99Hz Lamp Flux:206.022x1 lm		
NAME: Mini wall light 2W 3.5W+Type C	TYPE:	WEIGHT:
SPEC.:	DIM.:	SERIAL No.:
MFR.: CG LIGHTING	SUR.:	Shielding Angle:



LUMINANCE cd/(m2)		
G( DEG)	C0/180	C90/270
85	216	7606
80	236	4053
75	369	2915
70	400	2277
65	479	1916
60	494	1653
55	541	1472
50	546	1323
45	574	1207

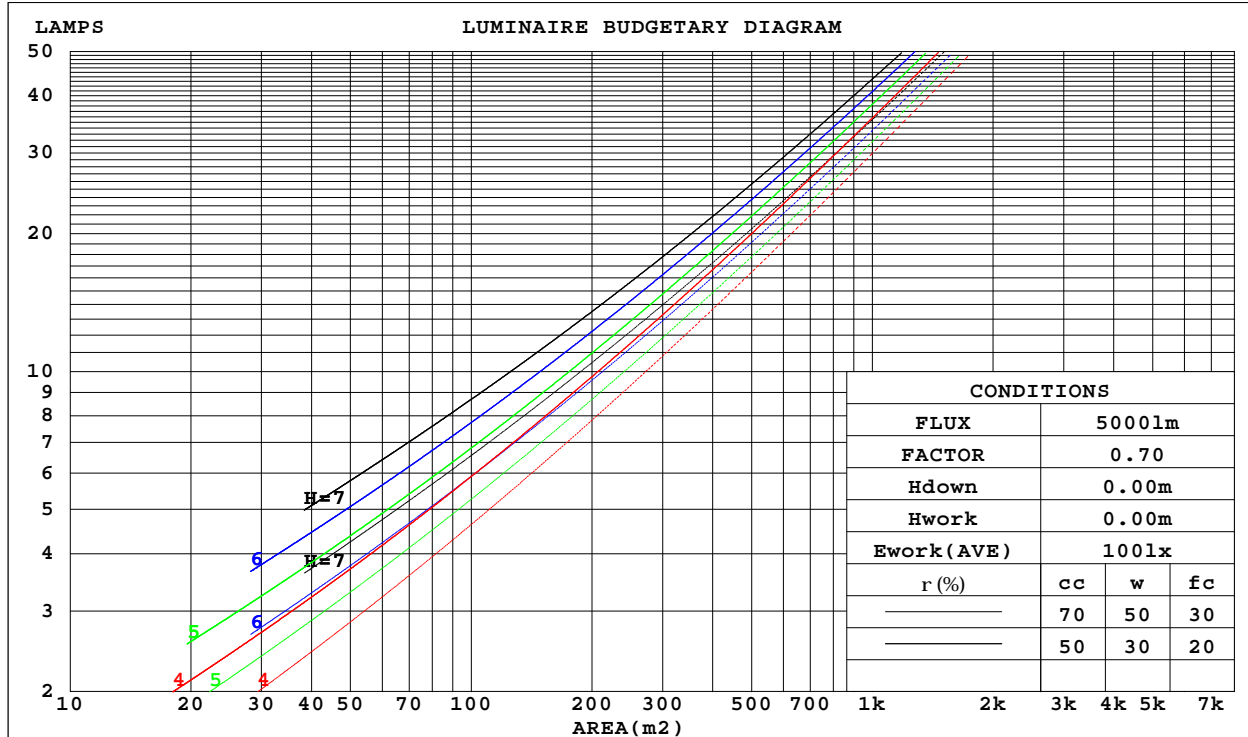
C Range: 0 - 360DEG  
 C Interval: 10.0DEG  
 Test Speed: HIGH  
 Temperature:25.3DEG  
 Operators:LQL  
 Test Date:31 May 2023

G Range: 0 - 90DEG  
 G Interval: 2.0DEG  
 Test System:EVERFINE GO-2000B\_V1 SYSTEM V2.0.403  
 Humidity:65.0%  
 Test Distance:10.365m [K=1.0000]  
 Remarks: SMD2W LED ZG1BGC30F00 ACTEC CV1218

CU AND LUMINAIRE BUDGETARY ESTIMATE DIAGRAM

Test:U:230.75V I:0.0219A P:2.6230W PF:0.5180 Freq:49.99Hz Lamp Flux:206.022x1 lm		
NAME: Mini wall light 2W 3.5W+Type C	TYPE:	WEIGHT:
SPEC.:	DIM.:	SERIAL No.:
MFR.: CG LIGHTING	SUR.:	Shielding Angle:

r <sub>cc</sub>	80%			70%			50%			30%			10%			0
r <sub>w</sub>	50%	30%	10%	50%	30%	10%	50%	30%	10%	50%	30%	10%	50%	30%	10%	0
r <sub>fc</sub>	20%			20%			20%			20%			20%			0
RCR	RCR:Room Cavity Ratio						Coefficients of Utilization(CU)									
0.0	1.19	1.19	1.19	1.16	1.16	1.16	1.11	1.11	1.11	1.06	1.06	1.06	1.02	1.02	1.02	.00
1.0	.97	.91	.86	.95	.90	.85	.91	.86	.82	.86	.83	.79	.83	.80	.77	.74
2.0	.83	.74	.67	.81	.73	.66	.77	.70	.64	.73	.68	.63	.70	.65	.61	.59
3.0	.71	.62	.54	.70	.61	.53	.67	.59	.52	.64	.57	.51	.61	.55	.50	.48
4.0	.63	.52	.45	.61	.52	.44	.58	.50	.44	.56	.49	.43	.54	.47	.42	.40
5.0	.56	.45	.38	.54	.45	.38	.52	.44	.37	.50	.43	.37	.48	.42	.36	.34
6.0	.50	.40	.33	.49	.39	.33	.47	.39	.32	.45	.38	.32	.43	.37	.32	.29
7.0	.45	.36	.29	.44	.35	.29	.43	.34	.28	.41	.34	.28	.40	.33	.28	.26
8.0	.41	.32	.26	.40	.32	.26	.39	.31	.25	.38	.30	.25	.36	.30	.25	.23
9.0	.38	.29	.23	.37	.29	.23	.36	.28	.23	.35	.28	.23	.34	.27	.22	.21
10.0	.35	.26	.21	.34	.26	.21	.33	.26	.21	.32	.25	.21	.31	.25	.20	.19



C Range: 0 - 360DEG  
 C Interval: 10.0DEG  
 Test Speed: HIGH  
 Temperature:25.3DEG  
 Operators:LQL  
 Test Date:31 May 2023

Range: 0 - 90DEG  
 Interval: 2.0DEG  
 Test System:EVERFINE GO-2000B\_V1 SYSTEM V2.0.403  
 Humidity:65.0%  
 Test Distance:10.365m [K=1.0000]  
 Remarks: SMD2W LED ZG1BGC30F00 ACTEC CV1218

WEC AND CCEC

Test:U:230.75V I:0.0219A P:2.6230W PF:0.5180 Freq:49.99Hz Lamp Flux:206.022x1 lm		
NAME: Mini wall light 2W 3.5W+Type C	TYPE:	WEIGHT:
SPEC.:	DIM.:	SERIAL No.:
MFR.: CG LIGHTING	SUR.:	Shielding Angle:

rcc	80%			70%			50%			30%			10%			0
rw	50%	30%	10%	50%	30%	10%	50%	30%	10%	50%	30%	10%	50%	30%	10%	0
rfc	20%			20%			20%			20%			20%			0
RCR	RCR:Room Cavity Ratio						Wall Exitance Coefficients(WEC)									
0.0																
1.0	.433	.246	.078	.426	.243	.077	.412	.236	.075	.399	.230	.074	.387	.225	.072	
2.0	.367	.201	.062	.360	.198	.061	.348	.193	.060	.336	.189	.059	.326	.184	.058	
3.0	.321	.171	.051	.315	.169	.051	.304	.165	.050	.294	.161	.049	.285	.158	.049	
4.0	.286	.149	.044	.281	.147	.043	.271	.144	.043	.262	.141	.042	.254	.138	.042	
5.0	.258	.132	.038	.254	.130	.038	.245	.128	.038	.237	.125	.037	.229	.123	.037	
6.0	.235	.118	.034	.231	.117	.034	.223	.114	.033	.216	.112	.033	.210	.110	.033	
7.0	.216	.107	.030	.212	.106	.030	.205	.104	.030	.199	.102	.030	.193	.100	.029	
8.0	.199	.097	.027	.196	.097	.027	.190	.095	.027	.184	.093	.027	.179	.092	.027	
9.0	.185	.090	.025	.182	.089	.025	.177	.087	.025	.172	.086	.025	.167	.085	.025	
10.0	.173	.083	.023	.170	.082	.023	.165	.081	.023	.161	.080	.023	.156	.079	.023	

rcc	80%			70%			50%			30%			10%			0
rw	50%	30%	10%	50%	30%	10%	50%	30%	10%	50%	30%	10%	50%	30%	10%	0
rfc	20%			20%			20%			20%			20%			0
RCR	RCR:Room Cavity Ratio						Ceiling Cavity Exitance Coefficients(CCEC)									
0.0	.190	.190	.190	.163	.163	.163	.111	.111	.111	.064	.064	.064	.020	.020	.020	
1.0	.189	.155	.125	.162	.133	.107	.111	.092	.074	.064	.053	.043	.020	.017	.014	
2.0	.182	.132	.089	.156	.113	.077	.107	.078	.054	.062	.046	.031	.020	.015	.010	
3.0	.174	.115	.067	.149	.099	.058	.103	.069	.041	.059	.040	.024	.019	.013	.008	
4.0	.166	.102	.053	.142	.088	.046	.098	.061	.032	.057	.036	.019	.018	.012	.006	
5.0	.158	.092	.043	.135	.079	.037	.093	.055	.026	.054	.033	.016	.017	.011	.005	
6.0	.149	.083	.036	.128	.072	.031	.089	.051	.022	.051	.030	.013	.017	.010	.004	
7.0	.142	.077	.031	.122	.066	.027	.084	.047	.019	.049	.027	.011	.016	.009	.004	
8.0	.135	.071	.027	.116	.061	.024	.080	.043	.017	.047	.025	.010	.015	.008	.003	
9.0	.128	.066	.024	.110	.057	.021	.076	.040	.015	.044	.024	.009	.014	.008	.003	
10.0	.122	.061	.021	.105	.053	.019	.073	.038	.013	.042	.022	.008	.014	.007	.003	

C Range: 0 - 360DEG  
 C Interval: 10.0DEG  
 Test Speed: HIGH  
 Temperature:25.3DEG  
 Operators:LQL  
 Test Date:31 May 2023

g Range: 0 - 90DEG  
 g Interval: 2.0DEG  
 Test System:EVERFINE GO-2000B\_V1 SYSTEM V2.0.403  
 Humidity:65.0%  
 Test Distance:10.365m [K=1.0000]  
 Remarks: SMD2W LED ZG1BGC30F00 ACTEC CV1218

UGR(Unified Glare Rating) Table

Test:U:230.75V I:0.0219A P:2.6230W PF:0.5180 Freq:49.99Hz Lamp Flux:206.022x1 lm										
NAME: Mini wall light 2W 3.5W+Type C					TYPE:			WEIGHT:		
SPEC.:					DIM.:			SERIAL No.:		
MFR.: CG LIGHTING					SUR.:			Shielding Angle:		
ceiling/cavity	0.7	0.7	0.5	0.5	0.3	0.7	0.7	0.5	0.5	0.3
walls	0.5	0.3	0.5	0.3	0.3	0.5	0.3	0.5	0.3	0.3
working plane	0.2	0.2	0.2	0.2	0.2	0.2	0.2	0.2	0.2	0.2
Room dimensions	Viewed crosswise					Viewed endwise				
x = 2H y = 2H	19.0	20.7	19.3	20.9	21.1	22.6	24.3	22.9	24.5	24.8
3H	20.5	22.1	20.8	22.3	22.6	25.7	27.3	26.0	27.6	27.8
4H	21.0	22.5	21.3	22.8	23.1	27.4	29.0	27.8	29.2	29.5
6H	21.3	22.8	21.6	23.0	23.3	29.3	30.7	29.6	31.0	31.3
8H	21.3	22.8	21.7	23.1	23.4	30.3	31.7	30.6	32.0	32.3
12H	21.3	22.7	21.7	23.0	23.3	31.4	32.8	31.8	33.1	33.4
4H 2H	21.0	22.5	21.3	22.8	23.0	23.3	24.9	23.7	25.1	25.4
3H	22.9	24.3	23.3	24.6	24.9	26.7	28.1	27.1	28.4	28.7
4H	23.8	25.0	24.1	25.4	25.7	28.6	29.9	29.0	30.2	30.6
6H	24.3	25.5	24.7	25.8	26.2	30.7	31.8	31.1	32.2	32.6
8H	24.5	25.6	24.9	25.9	26.3	31.8	32.9	32.2	33.3	33.7
12H	24.5	25.6	25.0	26.0	26.4	33.1	34.1	33.5	34.5	34.9
8H 4H	25.5	26.6	25.9	27.0	27.3	29.0	30.1	29.5	30.5	30.9
6H	26.6	27.6	27.1	28.0	28.4	31.4	32.4	31.9	32.8	33.2
8H	27.1	27.9	27.5	28.3	28.8	32.8	33.6	33.3	34.1	34.5
12H	27.4	28.1	27.8	28.6	29.1	34.3	35.1	34.8	35.5	36.0
12H 4H	26.0	27.0	26.5	27.4	27.8	29.1	30.1	29.5	30.5	30.9
6H	27.5	28.3	27.9	28.8	29.2	31.6	32.4	32.1	32.9	33.3
8H	28.2	28.9	28.6	29.4	29.8	33.1	33.8	33.6	34.3	34.8
Variations with the observer position at spacings:										
S = 1.0H	+ 0.1 / - 0.1					+ 0.1 / - 0.1				
1.5H	+ 0.2 / - 0.3					+ 0.2 / - 0.3				
2.0H	+ 0.3 / - 0.5					+ 0.3 / - 0.4				

CIE Pub.117, 206.0 lm Total Lamp Luminous Flux Correct (8log(F/F0) = -5.5)

C Range: 0 - 360DEG  
 C Interval: 10.0DEG  
 Test Speed: HIGH  
 Temperature:25.3DEG  
 Operators:LQL  
 Test Date:31 May 2023

g Range: 0 - 90DEG  
 g Interval: 2.0DEG  
 Test System:EVERFINE GO-2000B\_V1 SYSTEM V2.0.403  
 Humidity:65.0%  
 Test Distance:10.365m [K=1.0000]  
 Remarks: SMD2W LED ZG1BGC30F00 ACTEC CV1218

UTILIZATION FACTORS TABLE

Test:U:230.75V I:0.0219A P:2.6230W PF:0.5180 Freq:49.99Hz Lamp Flux:206.022x1 lm		
NAME: Mini wall light 2W 3.5W+Type C	TYPE:	WEIGHT:
SPEC.:	DIM.:	SERIAL No.:
MFR.: CG LIGHTING	SUR.:	Shielding Angle:

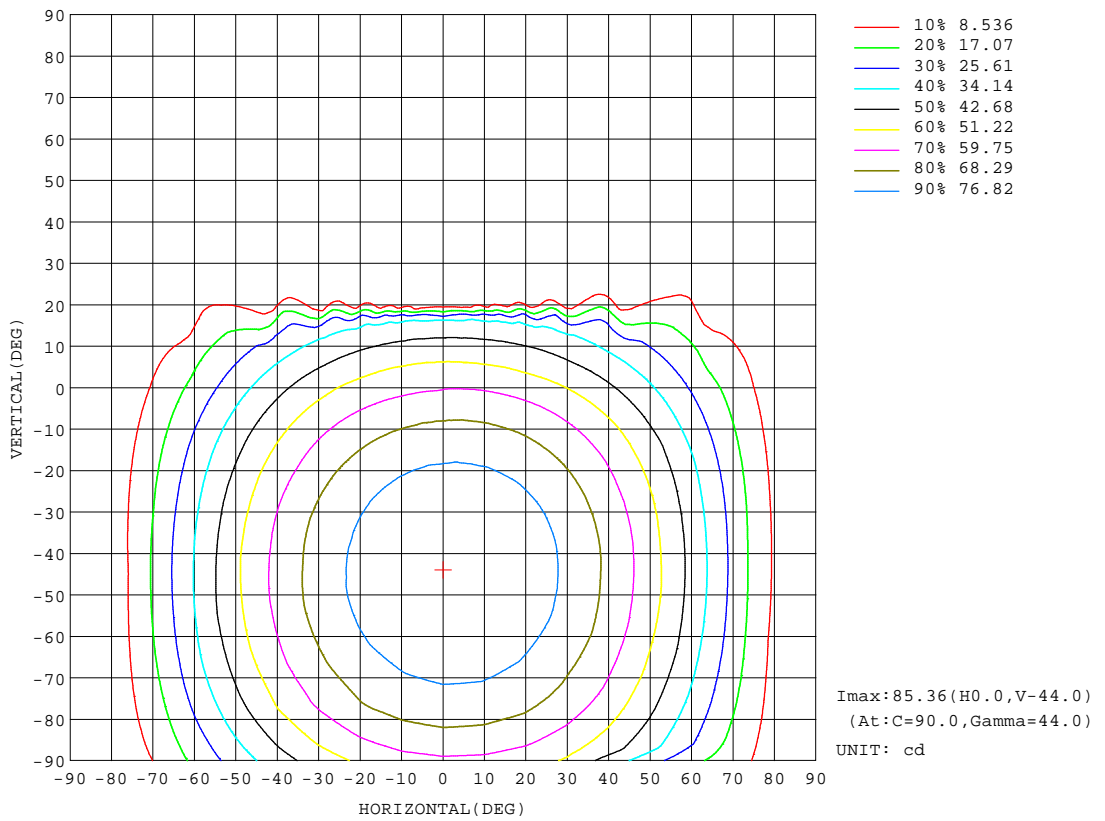
REFLECTANCE										
Ceiling	0.8	0.8	0.8	0.7	0.7	0.7	0.5	0.5	0.5	0
Walls	0.7	0.5	0.3	0.7	0.5	0.3	0.7	0.5	0.3	0
Working plane	0.2	0.2	0.2	0.2	0.2	0.2	0.2	0.2	0.2	0
ROOM INDEX	UTILIZATION FACTORS(PERCENT) k(RI) x RCR = 5									
k = 0.60	52	39	32	51	39	31	50	38	31	24
0.80	61	48	40	60	47	39	58	47	39	31
1.00	69	56	47	67	55	47	65	57	46	38
1.25	75	63	54	74	62	54	71	61	53	45
1.50	81	68	60	79	68	59	75	66	58	50
2.00	88	77	69	86	76	68	82	73	66	57
2.50	92	82	74	90	81	73	86	78	72	62
3.00	96	87	80	94	85	79	89	82	76	66
4.00	101	93	87	98	91	85	93	88	83	72
5.00	104	97	91	101	95	90	96	91	87	76
ROOM INDEX	UF(total)									Direct
According to DIN EN 13032-2 2004			Suspended				SHRNOM = 1.25			

C Range: 0 - 360DEG  
 C Interval: 10.0DEG  
 Test Speed: HIGH  
 Temperature:25.3DEG  
 Operators:LQL  
 Test Date:31 May 2023

g Range: 0 - 90DEG  
 Interval: 2.0DEG  
 Test System:EVERFINE GO-2000B\_V1 SYSTEM V2.0.403  
 Humidity:65.0%  
 Test Distance:10.365m [K=1.0000]  
 Remarks: SMD2W LED ZG1BGC30F00 ACTEC CV1218

ISOCANDELA DIAGRAM

Test:U:230.75V I:0.0219A P:2.6230W PF:0.5180 Freq:49.99Hz Lamp Flux:206.022x1 lm		
NAME: Mini wall light 2W 3.5W+Type C	TYPE:	WEIGHT:
SPEC.:	DIM.:	SERIAL No.:
MFR.: CG LIGHTING	SUR.:	Shielding Angle:



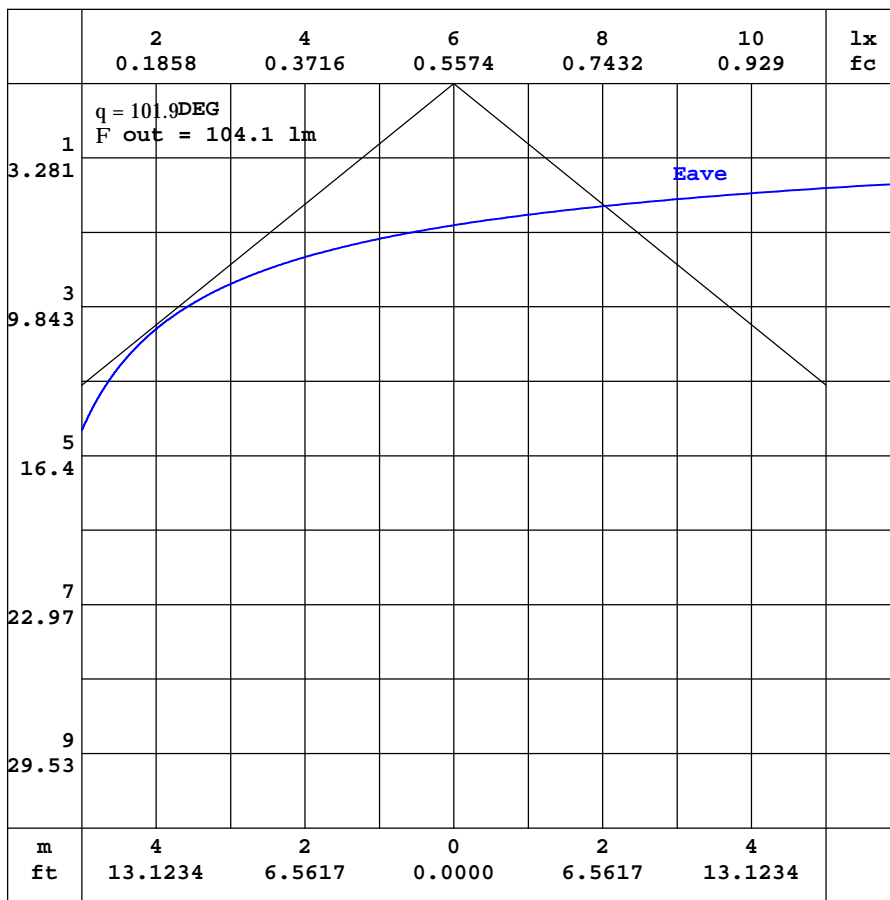
C Range: 0 - 360DEG  
 C Interval: 10.0DEG  
 Test Speed: HIGH  
 Temperature: 25.3DEG  
 Operators: LQL  
 Test Date: 31 May 2023

Range: 0 - 90DEG  
 Interval: 2.0DEG  
 Test System: EVERFINE GO-2000B\_V1 SYSTEM V2.0.403  
 Humidity: 65.0%  
 Test Distance: 10.365m [K=1.0000]  
 Remarks: SMD2W LED ZG1BGC30F00 ACTEC CV1218



AAI CURVES

Test:U:230.75V I:0.0219A P:2.6230W PF:0.5180 Freq:49.99Hz Lamp Flux:206.022x1 lm		
NAME: Mini wall light 2W 3.5W+Type C	TYPE:	WEIGHT:
SPEC.:	DIM.:	SERIAL No.:
MFR.: CG LIGHTING	SUR.:	Shielding Angle:



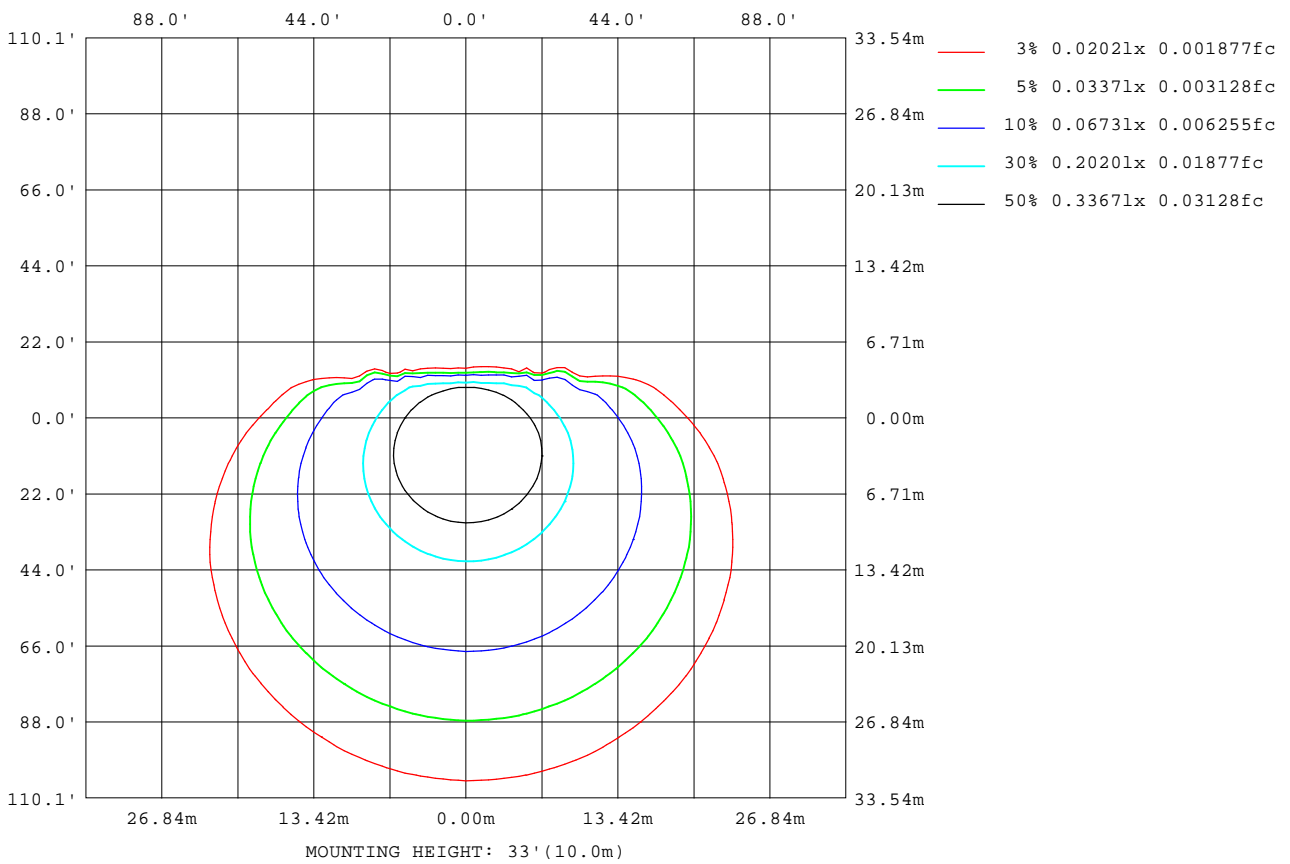
Note:The Curves indicate the illuminated area and the average illumination when the luminaire is at different distance.

C Range: 0 - 360DEG  
 C Interval: 10.0DEG  
 Test Speed: HIGH  
 Temperature:25.3DEG  
 Operators:LQL  
 Test Date:31 May 2023

Range: 0 - 90DEG  
 Interval: 2.0DEG  
 Test System:EVERFINE GO-2000B\_V1 SYSTEM V2.0.403  
 Humidity:65.0%  
 Test Distance:10.365m [K=1.0000]  
 Remarks: SMD2W LED ZG1BGC30F00 ACTEC CV1218

ISOLUX DIAGRAM

Test:U:230.75V I:0.0219A P:2.6230W PF:0.5180 Freq:49.99Hz Lamp Flux:206.022x1 lm		
NAME: Mini wall light 2W 3.5W+Type C	TYPE:	WEIGHT:
SPEC.:	DIM.:	SERIAL No.:
MFR.: CG LIGHTING	SUR.:	Shielding Angle:



C Range: 0 - 360DEG  
 C Interval: 10.0DEG  
 Test Speed: HIGH  
 Temperature: 25.3DEG  
 Operators: LQL  
 Test Date: 31 May 2023

Range: 0 - 90DEG  
 Interval: 2.0DEG  
 Test System: EVERFINE GO-2000B\_V1 SYSTEM V2.0.403  
 Humidity: 65.0%  
 Test Distance: 10.365m [K=1.0000]  
 Remarks: SMD2W LED ZG1BGC30F00 ACTEC CV1218

LED Avg.L Report

Test:U:230.75V I:0.0219A P:2.6230W PF:0.5180 Freq:49.99Hz Lamp Flux:206.022x1 lm		
NAME: Mini wall light 2W 3.5W+Type C	TYPE:	WEIGHT:
SPEC.:	DIM.:	SERIAL No.:
MFR.: CG LIGHTING	SUR.:	Shielding Angle:

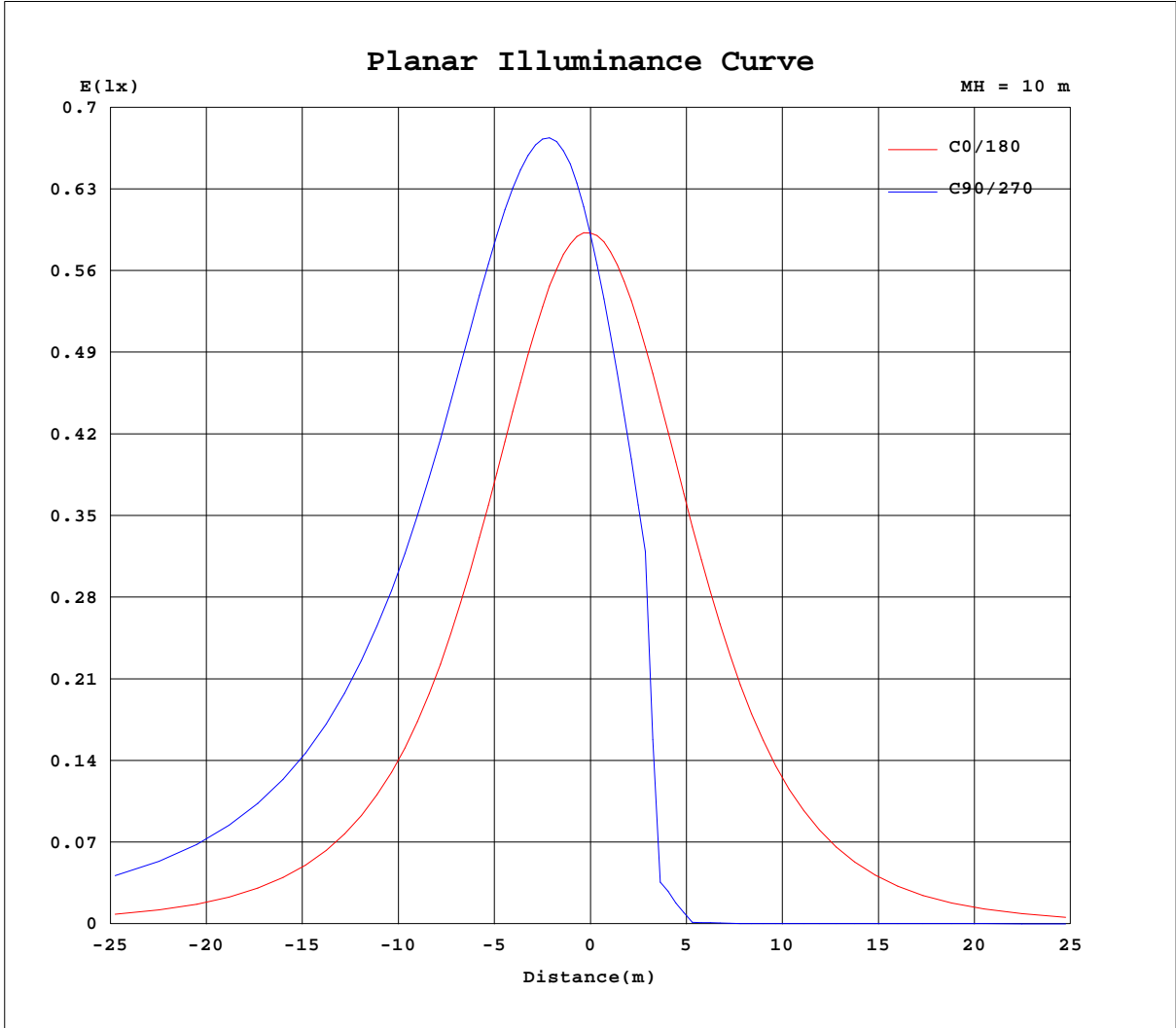
AvgL	cd/m2
L_0~180(65)av	394
L_0~180(75)av	260
L_0~180(85)av	116
L_90~270(65)av	956
L_90~270(75)av	1458
L_90~270(85)av	3777
L_45(65)av	750
L_45(75)av	1066
L_45(85)av	2523

Standard: GB/T 29293-2012

C Range: 0 - 360DEG  
 C Interval: 10.0DEG  
 Test Speed: HIGH  
 Temperature:25.3DEG  
 Operators:LQL  
 Test Date:31 May 2023

g Range: 0 - 90DEG  
 g Interval: 2.0DEG  
 Test System:EVERFINE GO-2000B\_V1 SYSTEM V2.0.403  
 Humidity:65.0%  
 Test Distance:10.365m [K=1.0000]  
 Remarks: SMD2W LED ZG1BGC30F00 ACTEC CV1218

Planar Illuminance Curve



C Range: 0 - 360DEG  
C Interval: 10.0DEG  
Test Speed: HIGH  
Temperature: 25.3DEG  
Operators: LQL  
Test Date: 31 May 2023

Page Range: 0 - 90DEG  
Page Interval: 2.0DEG  
Test System: EVERFINE GO-2000B\_V1 SYSTEM V2.0.403  
Humidity: 65.0%  
Test Distance: 10.365m [K=1.0000]  
Remarks: SMD2W LED ZG1BGC30F00 ACTEC CV1218

### LUMINOUS DISTRIBUTION INTENSITY DATA

Test:U:230.75V I:0.0219A P:2.6230W PF:0.5180 Freq:49.99Hz Lamp Flux:206.022x1 lm		
NAME: Mini wall light 2W 3.5W+Type C	TYPE:	WEIGHT:
SPEC.:	DIM.:	SERIAL No.:
MFR.: CG LIGHTING	SUR.:	Shielding Angle:

Table--1

UNIT: cd

C(DEG) g (DEG)	0	10	20	30	40	50	60	70	80	90	100	110	120	130	140	150	160	170	180
0	59.2	59.3	59.4	59.3	59.3	59.3	59.2	59.2	59.2	59.1	59.1	59.0	59.1	58.9	59.0	58.9	58.9	58.9	59.2
5	59.4	60.2	61.1	61.8	62.6	63.0	63.5	63.8	64.1	64.0	63.9	63.5	63.2	62.4	61.9	61.1	60.3	59.5	58.9
10	58.8	61.0	63.0	65.0	66.6	67.9	69.2	69.7	70.2	70.2	70.0	69.3	68.4	67.0	65.5	63.7	61.6	59.4	57.7
15	57.9	60.9	63.9	66.5	68.8	70.6	72.2	73.1	73.7	73.7	73.4	72.4	71.2	69.4	67.4	64.9	62.2	59.1	56.5
20	55.9	60.4	64.5	68.1	71.3	73.8	75.9	77.2	78.0	77.9	77.5	76.2	74.5	72.2	69.3	65.9	62.2	57.9	53.9
25	54.2	59.5	64.4	68.7	72.3	75.4	77.7	79.3	80.1	80.3	79.6	78.2	76.2	73.4	70.1	66.1	61.7	56.7	52.0
30	51.0	57.7	63.6	68.8	73.3	77.0	79.8	81.7	82.8	83.0	82.1	80.4	77.8	74.7	70.5	65.7	60.2	54.2	48.1
35	48.4	56.0	62.7	68.4	73.4	77.5	80.6	82.8	84.0	84.2	83.3	81.4	78.6	74.9	70.4	64.9	58.7	52.1	45.1
40	44.0	52.8	60.5	67.1	72.9	77.6	81.1	83.8	85.0	85.2	84.2	82.1	78.9	74.6	69.4	63.0	55.8	48.2	40.1
45	40.6	50.3	58.6	65.8	72.1	77.1	81.1	83.8	85.2	85.4	84.4	82.0	78.7	73.9	68.3	61.5	53.6	45.3	36.4
50	35.1	45.8	55.1	63.2	70.1	75.7	80.1	83.3	85.0	85.1	84.0	81.3	77.4	72.4	65.9	58.3	49.6	40.3	30.4
55	31.0	42.6	52.2	60.9	68.1	74.4	79.2	82.4	84.2	84.4	83.3	80.5	76.4	70.8	63.9	55.8	46.5	36.6	26.2
60	24.7	36.8	47.2	56.8	64.8	71.7	76.7	80.4	82.4	82.6	81.3	78.5	74.0	67.9	60.3	51.6	41.3	30.7	19.6
65	20.2	32.5	43.3	53.5	62.1	69.4	74.7	78.7	80.6	81.0	79.5	76.5	71.8	65.5	57.5	48.2	37.6	26.4	15.2
70	13.7	25.6	37.0	48.0	57.3	65.1	71.1	75.4	77.6	77.9	76.3	73.0	67.9	61.1	52.6	42.8	31.3	19.7	9.20
75	9.54	20.7	32.5	43.7	53.5	61.9	68.2	72.8	75.0	75.4	73.8	70.3	64.8	57.8	48.9	38.7	26.8	15.2	5.69
80	4.10	13.1	25.2	36.8	47.2	56.2	62.7	67.5	69.8	70.4	68.7	65.1	59.4	52.2	42.5	31.9	19.9	8.57	1.98
85	1.88	8.82	20.4	31.8	42.2	51.2	58.2	63.1	65.7	66.3	64.4	60.7	54.8	47.0	37.6	26.9	15.4	5.19	0.79
90	0.16	3.65	12.6	19.1	29.1	39.2	50.2	55.1	57.8	58.3	56.7	52.7	46.8	38.8	29.4	18.8	8.59	1.90	0.20

C Range: 0 - 360DEG  
 C Interval: 10.0DEG  
 Test Speed: HIGH  
 Temperature:25.3DEG  
 Operators:LQL  
 Test Date:31 May 2023

Range: 0 - 90DEG  
 Interval: 2.0DEG  
 Test System:EVERFINE GO-2000B\_V1 SYSTEM V2.0.403  
 Humidity:65.0%  
 Test Distance:10.365m [K=1.0000]  
 Remarks: SMD2W LED ZG1BGC30F00 ACTEC CV1218

**LUMINOUS DISTRIBUTION INTENSITY DATA**

Test:U:230.75V I:0.0219A P:2.6230W PF:0.5180 Freq:49.99Hz Lamp Flux:206.022x1 lm		
NAME: Mini wall light 2W 3.5W+Type C	TYPE:	WEIGHT:
SPEC.:	DIM.:	SERIAL No.:
MFR.: CG LIGHTING	SUR.:	Shielding Angle:

Table--2 UNIT: cd

C(DEG) g (DEG)	190	200	210	220	230	240	250	260	270	280	290	300	310	320	330	340	350		
0	59.3	59.4	59.3	59.3	59.3	59.2	59.2	59.2	59.1	59.1	59.0	59.1	58.9	59.0	58.9	58.9	58.9		
5	58.0	57.3	56.4	55.9	55.2	54.8	54.4	54.3	54.0	54.2	54.2	54.7	55.2	55.9	56.4	57.2	58.1		
10	55.5	53.6	51.6	49.9	48.5	47.3	46.4	46.0	45.7	46.0	46.6	47.7	48.8	50.5	52.1	54.2	56.2		
15	53.5	50.7	48.0	45.7	43.4	41.9	40.3	39.7	39.4	39.9	40.6	42.2	44.0	46.3	48.8	51.6	54.4		
20	49.7	45.7	41.8	38.3	35.0	26.7	7.90	4.49	4.33	5.35	9.73	28.1	35.8	39.4	43.1	47.1	51.2		
25	46.7	41.9	37.3	33.0	9.01	4.17	3.06	2.57	2.37	2.91	3.83	5.14	10.4	34.1	38.7	43.8	48.6		
30	41.7	35.8	29.9	4.57	2.60	0.99	0.20	0.11	0.18	0.21	0.30	1.13	2.76	3.96	31.5	37.9	44.1		
35	38.0	31.3	7.88	2.65	0.29	0.18	0.16	0.10	0.15	0.14	0.24	0.18	0.37	2.67	11.1	33.6	40.6		
40	32.0	24.3	2.49	0.13	0.18	0.13	0.15	0.08	0.09	0.08	0.13	0.12	0.15	0.19	2.89	26.6	34.9		
45	27.6	9.60	1.09	0.13	0.14	0.09	0.15	0.11	0.09	0.11	0.10	0.10	0.13	0.15	1.53	16.0	30.8		
50	20.9	2.62	0.24	0.13	0.13	0.14	0.13	0.16	0.12	0.16	0.10	0.15	0.12	0.14	0.34	3.02	24.3		
55	16.4	1.30	0.21	0.14	0.14	0.18	0.13	0.21	0.15	0.21	0.13	0.19	0.12	0.15	0.30	1.66	19.9		
60	9.26	0.28	0.15	0.18	0.18	0.26	0.22	0.30	0.24	0.30	0.23	0.28	0.21	0.20	0.24	0.37	13.4		
65	2.56	0.24	0.15	0.24	0.22	0.33	0.34	0.38	0.33	0.38	0.29	0.32	0.25	0.24	0.21	0.32	4.89		
70	0.61	0.19	0.21	0.32	0.36	0.44	0.42	0.49	0.46	0.49	0.39	0.42	0.36	0.38	0.24	0.24	1.35		
75	0.41	0.23	0.27	0.38	0.38	0.51	0.48	0.58	0.52	0.57	0.49	0.50	0.39	0.39	0.24	0.27	0.54		
80	0.22	0.30	0.37	0.49	0.50	0.63	0.59	0.68	0.60	0.67	0.60	0.63	0.49	0.47	0.36	0.32	0.30		
85	0.24	0.35	0.43	0.55	0.58	0.71	0.69	0.77	0.72	0.77	0.68	0.69	0.57	0.56	0.39	0.37	0.27		
90	0.27	0.39	0.49	0.68	0.71	0.84	0.83	0.83	0.83	0.83	0.80	0.78	0.72	0.66	0.52	0.43	0.30		

C Range: 0 - 360DEG	g Range: 0 - 90DEG
C Interval: 10.0DEG	Interval: 2.0DEG
Test Speed: HIGH	Test System:EVERFINE GO-2000B_V1 SYSTEM V2.0.403
Temperature:25.3DEG	Humidity:65.0%
Operators:LQL	Test Distance:10.365m [K=1.0000]
Test Date:31 May 2023	Remarks: SMD2W LED ZG1BGC30F00 ACTEC CV1218